

NEVER SAY NEVER — CARVER VOYAGER



Builder: Carver Voyager

Year Built: 2006

Model: SHELBY

Price: PRICE ON APPLICATION

Location: United States

LOA: 56' 0" (17.07m)

Beam: 15' 4" (4.67m)

Max Draft: 4' 9" (1.45m)

Cruise Speed: 24 Kts. (28 MPH)

Our experienced yacht broker, Andrey Shestakov, will help you choose and buy a yacht that best suits your needs **Never Say Never — Carver Voyager** from our catalogue. Presently, at Shestakov Yacht Sales Inc., we have a wide variety of yachts available on our sale's list. We also work in close contact with all the big yacht manufacturers from all over the world.

If you would like to buy a yacht **Never Say Never — Carver Voyager** or would like help answering any questions concerning purchasing, selling or chartering a yacht, please call **+1(954)274-4435**

TABLE OF CONTENTS

TABLE OF CONTENTS	2
SPECIFICATIONS	5
Overview	5
Basic Information	5
Dimensions	5
Speed, Capacities and Weight	5
Accommodations	6
Hull and Deck Information	6
Engine Information	6
DETAILED INFORMATION	7
Accommodations	7
Decks and Exterior	8
Engines and Mechanical	9
Navigation and Electronics	9
Manufacturer Provided Description	10
Additional Information	10
Disclaimer	10
Exclusions	11
Disclaimer	11
PHOTOS	12
2	12
3	12
4	12
5	12
6	12
7	12
8	13
9	13

10	13
11	13
12	13
13	13
14	14
15	14
16	14
17	14
18	14
19	14
20	15
21	15
22	15
23	15
24	15
25	15
26	16
27	16
28	16
29	16
30	16
31	16
32	17
33	17
34	17
35	17
36	17
37	17
38	18

39	18
40	18
41	18
42	18
43	18
44	19
45	19
46	19
47	19
48	19
49	19
50	20
51	20
52	20
53	20
54	20
55	20
56	21
57	21
CONTACTS	22
Contact details	22
Telephones	22
Office hours	22
Address	22

SPECIFICATIONS

Overview

"A STRIKING YACHT DESIGNED FOR EXTENDED CRUISING IN COMFORT AND SECURITY" PowerBoat Guide

Never Say Never is a beautiful and well-equipped **Carver 56 Voyager Pilothouse!** Powered by twin **Volvo D-12 Diesels** her long list of features includes Bow and Stern Thrusters, a Hydraulic Swim Platform AND a 600# Davit on the Bridge Deck, a Bridge Hard-Top with Excellent Enclosure Curtains, Reverse Cycle Bridge HVAC, an Aft Docking Station, Upgraded Granite Countertops and More!

Please check the FULL SPECS for more detailed information and contact us for more details! Let's schedule an appointment for you to see her for yourself!

A Hard-Body Dinghy with Outboard is also available but is not included in this offering.

Basic Information

Category: SHELBY

Sub Category: Pilothouse

Model Year: 2006

Year Built: 2006

Country: United States

Dimensions

LOA: 56' 0" (17.07m)

Beam: 15' 4" (4.67m)

Max Draft: 4' 9" (1.45m)

Clearance: 19' 0" (5.79m)

Speed, Capacities and Weight

Cruise Speed: 24 Kts. (28 MPH)

Displacement: 52500 Pounds

Water Capacity: 200 Gallons

Holding Tank: 100 Gallons

Fuel Capacity: 800 Gallons

Accommodations

Total Cabins: 3

Total Heads: 2

Hull and Deck Information

Hull Material: Fiberglass

Hull Finish: Plastic

Engine Information

Engines: 2

Manufacturer: Volvo

Model: D12 EVC

Engine Type: Inboard

Fuel Type: Diesel

DETAILED INFORMATION

Accommodations

The Carver 56 Voyager is a three-stateroom two-head layout with a raised Pilothouse and a large Enclosed Bridge Deck. The Master Stateroom is midship with an over-sized Island Queen Berth. The Master features separate Head and Shower/tub closets and a full sized washer and dryer. The VIP Stateroom is forward and also features an Island Queen Berth. The third stateroom features over and under single bunks, each with their own TV! The Guest Head has a privacy entrance from the VIP as well as a day-head entrance.

The floor plan is dominated by the raised Pilothouse in the center of the boat. The Pilothouse is fully equipped and has excellent visibility. The Pilothouse also features a large port-side settee and an optional TV to starboard above the bow access door.

The Bridge Deck has a full hard-top with enclosure and is climate controlled.

Salon and Galley

- Large Stainless Steel Sliding Entrance Door with Screen
- Port Side Dinette with Cherry and Sapele Wooden Table
- Starboard Settee - Converts to Sleeper
- NEW Satellite TV System - 2020
- Entertainment Center
- Retractable Flatscreen 32" TV
- Engineered Hardwood Flooring
- Large Windows with Roman-type Shades
- Upgraded Granite Countertops
- Drawer-Type Refrigerator and Freezer
- Three-Burner Electric Solid Surface Stovetop with Stainless Backsplash
- Sharp Convection Microwave Oven
- Built In Coffee Maker
- Cherry and Sapele Cabinetry
- Large Double Stainless Steel Sink Basin
- Central Vacuum System

Pilothouse

- Wrap-around Aircraft-type Helm
- Large Flexsteel Swivel Captain's Chair
- L-Shaped Portside Settee
- Full Instrumentation
- Full Windshields with Wipers
- Windshield Defoggers
- New Windshield Screens

- Optional Pilothouse TV
- Bow Access Door

Master Stateroom

- Oversized Island Queen
- Large Standing Chest of Drawers
- Three Large Cedar Lined Hanging Lockers
- Upgraded Granite Countertops
- Center Vanity
- Private Head Closet
- Vacu-Flush Head System
- Separate Shower/Tub Closet
- Full-Sized Washer and Dryer
- Beautiful Cherry Cabinetry and Wall Treatment

VIP Stateroom

- Oversized Island Queen Berth
- Two Cedar Lined Hanging Lockers
- Under-Berth Storage
- Flatscreen TV
- Beautiful Cherry Cabinetry and Wall Treatment
- Privacy Head Entrance

Guest Stateroom

- Two Over/Under Single Berths
- Two Individual Flatscreen TV
- Beautiful Cherry Cabinetry and Wall Treatment

Decks and Exterior

- Large Hydraulic Swim Platform with Dinghy Chocks - 63 Sq Ft Approximate - NEW Hydraulics 2015
- Full Cockpit - 69 Sq Ft Approximate
- Cockpit Controlled Station - Engine and Thrusters
- Aft Bench Cockpit Seating with Storage - New Cockpit Cushions
- Underwater Lighting
- Starboard Floating Steps to Bridge
- Large Bridge Deck with Aft Bridge Extension - 73 Sq Ft Approximate
- Full Bridge Hardtop
- Full Bridge Enclosure - Hard Polycarbonate Windows
- Reverse Cycle Heat and Air Conditioning - Bridge
- Full Upper Helm

- Crescent Shaped Dinette with Fiberglass Table - Seats up to Seven!
- Double Lounge Seat - Starboard Aft
- Double Helm Seat - Adjustable
- Bridge Deck Grill - Electric
- Bridge Deck Refrigerator
- Bridge Deck Ice maker
- Aft Deck Extension with Optional Full Railing
- Aft Deck Dinghy Davit - 600# Rating
- Starboard Locking Bow Access Door - From Pilothouse
- Forward Electrical Hookups for Bow-To Docking
- Bow Sun Pads with Cover - Recently Upgraded

Engines and Mechanical

- Two Volvo D12 EVC Diesels - 675 HP Each - 1160 Hours
- Volvo EVC Electronic Controls
- Pilothouse, Bridge, and Cockpit Controls
- ZF Marine Transmissions
- Bow and Stern Thrusters
- Kohler Generator - 22kW - With Sound Shield
- Dual 50 Amp Shore Power Connections
- Dual Glendenning Cable Reels - Aft Connection
- Optional Forward Electrical Connections - Starboard Bow
- Reverse Cycle Heat and AC - Four Zone Split System - 72,000 BTU
- Reverse Cycle Bridge Heat and AC - Bridge Deck - 24,000 BTU
- 20 Gallon Stainless Steel Water Heater
- Reverso Oil Change System
- Automatic Fire Suppression System
- Charles 20 Amp Battery Charger
- Charles IQ2600 Quasiwave Inverter
- Charles IsoBoost Isolation Transformers (2)

Navigation and Electronics

Pilothouse

- Northstar 6000i Plotter
- Furuno NavNet Plotter
- Furuno RD30 Multi Display
- Simrad AP25 AutoPilot with Corded Remote
- Ritchie Compass
- iCom M602 VHF Radio

- Volvo EVC Engine Controls
- Volvo Multi Function Engine Management Displays
- Jabsco Spotlight Control
- Bennett Trim Tab Controls
- Engine Room Camera Monitor

Bridge Deck Upper Helm

- Northstar 6000i Plotter
- Furuno NavNet Plotter
- Furuno RD30 Multi Display
- Simrad AP25 AutoPilot with Corded Remote
- Ritchie Compass
- iCom M602 VHF Radio
- Volvo EVC Engine Controls
- Volvo Multi Function Engine Management Displays
- Jabsco Spotlight Control
- Bennett Trim Tab Controls
- Engine Room Camera Monitor

Manufacturer Provided Description

The 56 Voyager is both a work of art and state-of-the-art. A huge and hospitable command bridge includes a wet bar and grill, a roomy U-shaped lounge on portside with a fiberglass table, and a companion doublewide lounge at starboard.

Below, the pilothouse's L-shaped lounge surrounds a comfortable command center. The salon's social area includes a roomy L-shaped dinette. The first-rate entertainment system features a retractable 30" LCD TV that floats above the fully-equipped galley when engaged.

The master stateroom is a retreat featuring an island berth with an oversized queen innerspring mattress. Soothing surroundings also await your guests in two additional staterooms. Additionally, both the master and VIP staterooms have private head access.

Additional Information

A 1999 Jolly 365 Hard Body Dinghy with a 40 HP Mercury Outboard is also available

Disclaimer

The Company offers the details of this vessel in good faith but cannot guarantee or warrant the accuracy of this information nor warrant the condition of the vessel. A buyer should instruct his agents, or his surveyors, to investigate such details as the buyer desires validated. This vessel is

offered subject to prior sale, price change, or withdrawal without notice.

Exclusions

Owner's personal belongings.

Disclaimer

The Company offers the details of this vessel or yacht in good faith but cannot guarantee or warrant the accuracy of this information nor warrant the condition of the vessel. A buyer should instruct his representatives, agents, or his surveyors, to investigate such details as the buyer desires validated. This vessel or yacht is offered subject to prior sale, price change, or withdrawal without notice.

PHOTOS

2



3



4



5



6



7



8



9



10



11



12



13



14



15



16



17



18



19



20



21



22



23



24



25



26



27



28



29



30



31



32



33



34



35



36



37



38



39



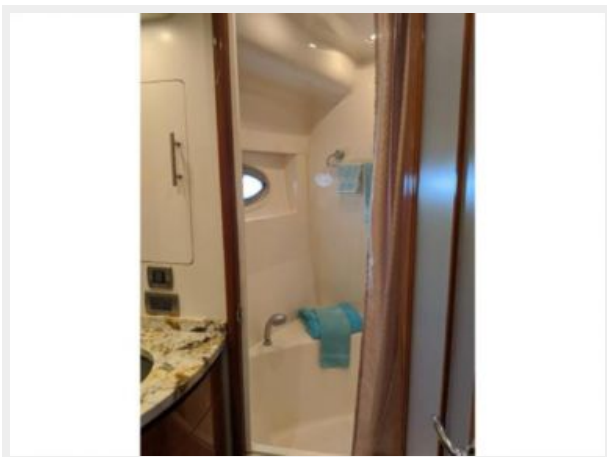
40



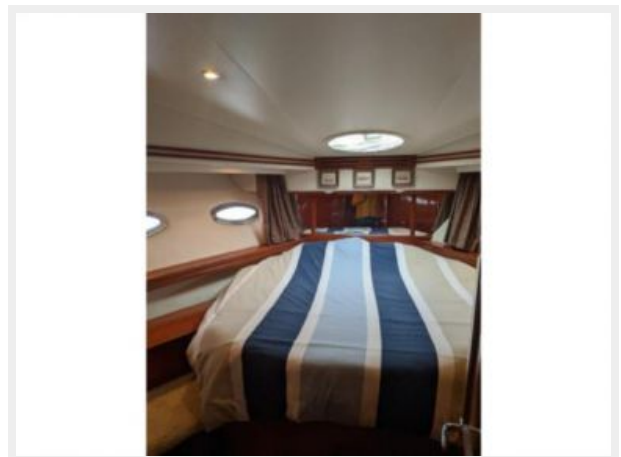
41



42



43



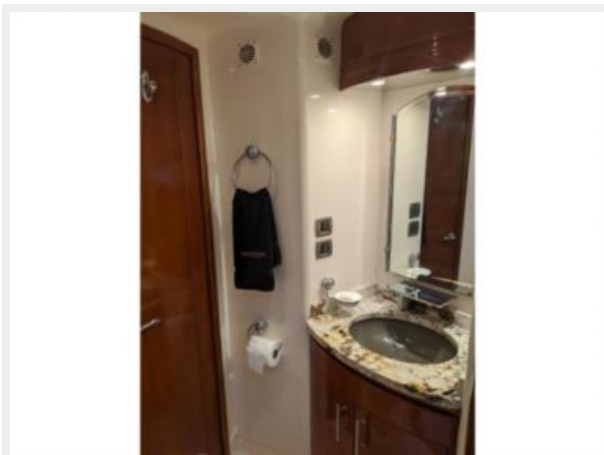
44



45



46



47



48



49



50



51



52



53



54



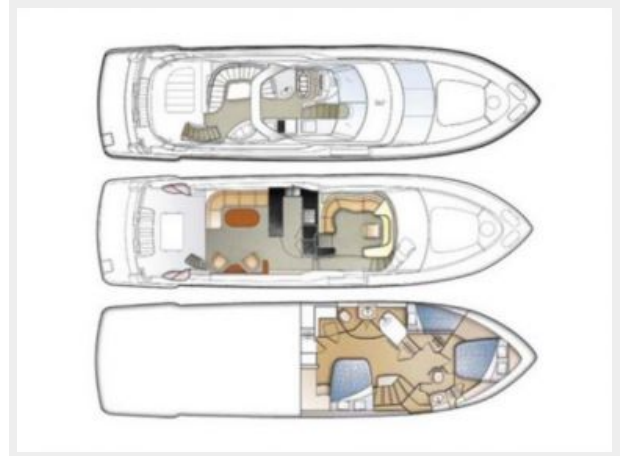
55



56



57



CONTACTS

Andrey Shestakov, leading yacht broker of the sales department of Shestakov Yacht Sales Inc. Shestakov Yacht Sales Inc., the official representative of the Miami/Fort Lauderdale FL headquarters.

Contact details

Email: andrey@shestakovyachtsales.com

Web: shestakovyachtsales.com/en/

Telephones

USA: +1(954)274-4435

Office hours

Monday – Saturday: **9:00 - 21:00** EDT

Sunday: **closed**

Address



Harbour Towne Marina, 850 NE 3rd St,
STE 213, Dania, FL 33004