

NEVER SAY NEVER — CARVER VOYAGER



Судостроитель: Carver Voyager

Год постройки: 2006

Модель: SHELBY

Цена: **ЦЕНА ЯХТЫ ПО ЗАПРОСУ**

Местонахождение: United States

Длина общая: 56' 0" (17.07m)

Ширина: 15' 4" (4.67m)

Макс. осадка: 4' 9" (1.45m)

Крейс. скорость: 24 Kts. (28 MPH)

Купить **Never Say Never — Carver Voyager** а также выбрать подходящую вам яхту из нашего каталога яхт вам поможет опытный яхтенный брокер Андрей Шестаков. На сегодняшний день компания **Shestakov Yacht Sales Inc.** имеет большое количество яхт в собственном списке продаж, а также тесно сотрудничает со всеми крупными яхтенными производителями по всему миру.

Для того чтобы купить яхту **Never Say Never — Carver Voyager** а также проконсультироваться по любому вопросу связанному с покупкой, продажей, чартером яхт позвоните по телефону **+7(918)465-66-44**.

ОГЛАВЛЕНИЕ

ОГЛАВЛЕНИЕ	2
ХАРАКТЕРИСТИКИ	5
Обзор	5
Основная информация	5
Размеры	5
Скорость, вместимость и масса	5
Размещение	6
Корпус и палуба	6
Информация о двигателе	6
ПОДРОБНОЕ ОПИСАНИЕ	7
Accommodations	7
Decks and Exterior	8
Engines and Mechanical	9
Navigation and Electronics	9
Manufacturer Provided Description	10
Additional Information	10
Disclaimer	10
Исключения	11
Отказ от ответственности	11
ФОТОГРАФИИ	12
2	12
3	12
4	12
5	12
6	12
7	12
8	13
9	13

10	13
11	13
12	13
13	13
14	14
15	14
16	14
17	14
18	14
19	14
20	15
21	15
22	15
23	15
24	15
25	15
26	16
27	16
28	16
29	16
30	16
31	16
32	17
33	17
34	17
35	17
36	17
37	17
38	18

39	18
40	18
41	18
42	18
43	18
44	19
45	19
46	19
47	19
48	19
49	19
50	20
51	20
52	20
53	20
54	20
55	20
56	21
57	21
КОНТАКТЫ	22
Контактная информация	22
Телефоны	22
Время работы	22
Адрес	22

ХАРАКТЕРИСТИКИ

Обзор

"A STRIKING YACHT DESIGNED FOR EXTENDED CRUISING IN COMFORT AND SECURITY" PowerBoat Guide

Never Say Never is a beautiful and well-equipped **Carver 56 Voyager Pilothouse!** Powered by twin **Volvo D-12 Diesels** her long list of features includes Bow and Stern Thrusters, a Hydraulic Swim Platform AND a 600# Davit on the Bridge Deck, a Bridge Hard-Top with Excellent Enclosure Curtains, Reverse Cycle Bridge HVAC, an Aft Docking Station, Upgraded Granite Countertops and More!

Please check the FULL SPECS for more detailed information and contact us for more details! Let's schedule an appointment for you to see her for yourself!

A Hard-Body Dinghy with Outboard is also available but is not included in this offering.

Основная информация

Тип судна: SHELBY

Подкатегория: Pilothouse

Модельный год: 2006

Год постройки: 2006

Страна: United States

Размеры

Длина общая: 56' 0" (17.07m)

Ширина: 15' 4" (4.67m)

Макс. осадка: 4' 9" (1.45m)

Трапы: 19' 0" (5.79m)

Скорость, вместимость и масса

Крейс. скорость: 24 Kts. (28 MPH)

Водоизмещение: 52500 Pounds

Вместимость воды: 200 Gallons

Вместимость сточного бака: 100 Gallons

Объем топливного бака: 800 Gallons

Размещение

Всего кают: 3

Всего ком. состава: 2

Корпус и палуба

Материал корпуса: Fiberglass

Отделка корпуса: Plastic

Информация о двигателе

Двигатели: 2

Производитель: Volvo

Модель: D12 EVC

Тип двигателя: Inboard

Тип топлива: Diesel

ПОДРОБНОЕ ОПИСАНИЕ

Accommodations

The Carver 56 Voyager is a three-stateroom two-head layout with a raised Pilothouse and a large Enclosed Bridge Deck. The Master Stateroom is midship with an over-sized Island Queen Berth. The Master features separate Head and Shower/tub closets and a full sized washer and dryer. The VIP Stateroom is forward and also features an Island Queen Berth. The third stateroom features over and under single bunks, each with their own TV! The Guest Head has a privacy entrance from the VIP as well as a day-head entrance.

The floor plan is dominated by the raised Pilothouse in the center of the boat. The Pilothouse is fully equipped and has excellent visibility. The Pilothouse also features a large port-side settee and an optional TV to starboard above the bow access door.

The Bridge Deck has a full hard-top with enclosure and is climate controlled.

Salon and Galley

- Large Stainless Steel Sliding Entrance Door with Screen
- Port Side Dinette with Cherry and Sapele Wooden Table
- Starboard Settee - Converts to Sleeper
- NEW Satellite TV System - 2020
- Entertainment Center
- Retractable Flatscreen 32" TV
- Engineered Hardwood Flooring
- Large Windows with Roman-type Shades
- Upgraded Granite Countertops
- Drawer-Type Refrigerator and Freezer
- Three-Burner Electric Solid Surface Stovetop with Stainless Backsplash
- Sharp Convection Microwave Oven
- Built In Coffee Maker
- Cherry and Sapele Cabinetry
- Large Double Stainless Steel Sink Basin
- Central Vacuum System

Pilothouse

- Wrap-around Aircraft-type Helm
- Large Flexsteel Swivel Captain's Chair
- L-Shaped Portside Settee
- Full Instrumentation
- Full Windshields with Wipers
- Windshield Defoggers
- New Windshield Screens

- Optional Pilothouse TV
- Bow Access Door

Master Stateroom

- Oversized Island Queen
- Large Standing Chest of Drawers
- Three Large Cedar Lined Hanging Lockers
- Upgraded Granite Countertops
- Center Vanity
- Private Head Closet
- Vacu-Flush Head System
- Separate Shower/Tub Closet
- Full-Sized Washer and Dryer
- Beautiful Cherry Cabinetry and Wall Treatment

VIP Stateroom

- Oversized Island Queen Berth
- Two Cedar Lined Hanging Lockers
- Under-Berth Storage
- Flatscreen TV
- Beautiful Cherry Cabinetry and Wall Treatment
- Privacy Head Entrance

Guest Stateroom

- Two Over/Under Single Berths
- Two Individual Flatscreen TV
- Beautiful Cherry Cabinetry and Wall Treatment

Decks and Exterior

- Large Hydraulic Swim Platform with Dinghy Chocks - 63 Sq Ft Approximate - NEW Hydraulics 2015
- Full Cockpit - 69 Sq Ft Approximate
- Cockpit Controlled Station - Engine and Thrusters
- Aft Bench Cockpit Seating with Storage - New Cockpit Cushions
- Underwater Lighting
- Starboard Floating Steps to Bridge
- Large Bridge Deck with Aft Bridge Extension - 73 Sq Ft Approximate
- Full Bridge Hardtop
- Full Bridge Enclosure - Hard Polycarbonate Windows
- Reverse Cycle Heat and Air Conditioning - Bridge
- Full Upper Helm

- Crescent Shaped Dinette with Fiberglass Table - Seats up to Seven!
- Double Lounge Seat - Starboard Aft
- Double Helm Seat - Adjustable
- Bridge Deck Grill - Electric
- Bridge Deck Refrigerator
- Bridge Deck IceMaker
- Aft Deck Extension with Optional Full Railing
- Aft Deck Dinghy Davit - 600# Rating
- Starboard Locking Bow Access Door - From Pilothouse
- Forward Electrical Hookups for Bow-To Docking
- Bow Sun Pads with Cover - Recently Upgraded

Engines and Mechanical

- Two Volvo D12 EVC Diesels - 675 HP Each - 1160 Hours
- Volvo EVC Electronic Controls
- Pilothouse, Bridge, and Cockpit Controls
- ZF Marine Transmissions
- Bow and Stern Thrusters
- Kohler Generator - 22kW - With Sound Shield
- Dual 50 Amp Shore Power Connections
- Dual Glendenning Cable Reels - Aft Connection
- Optional Forward Electrical Connections - Starboard Bow
- Reverse Cycle Heat and AC - Four Zone Split System - 72,000 BTU
- Reverse Cycle Bridge Heat and AC - Bridge Deck - 24,000 BTU
- 20 Gallon Stainless Steel Water Heater
- Reverso Oil Change System
- Automatic Fire Suppression System
- Charles 20 Amp Battery Charger
- Charles IQ2600 Quasiwave Inverter
- Charles IsoBoost Isolation Transformers (2)

Navigation and Electronics

Pilothouse

- Northstar 6000i Plotter
- Furuno NavNet Plotter
- Furuno RD30 Multi Display
- Simrad AP25 AutoPilot with Corded Remote
- Ritchie Compass
- iCom M602 VHF Radio

- Volvo EVC Engine Controls
- Volvo Multi Function Engine Management Displays
- Jabsco Spotlight Control
- Bennett Trim Tab Controls
- Engine Room Camera Monitor

Bridge Deck Upper Helm

- Northstar 6000i Plotter
- Furuno NavNet Plotter
- Furuno RD30 Multi Display
- Simrad AP25 AutoPilot with Corded Remote
- Ritchie Compass
- iCom M602 VHF Radio
- Volvo EVC Engine Controls
- Volvo Multi Function Engine Management Displays
- Jabsco Spotlight Control
- Bennett Trim Tab Controls
- Engine Room Camera Monitor

Manufacturer Provided Description

The 56 Voyager is both a work of art and state-of-the-art. A huge and hospitable command bridge includes a wet bar and grill, a roomy U-shaped lounge on portside with a fiberglass table, and a companion doublewide lounge at starboard.

Below, the pilothouse's L-shaped lounge surrounds a comfortable command center. The salon's social area includes a roomy L-shaped dinette. The first-rate entertainment system features a retractable 30" LCD TV that floats above the fully-equipped galley when engaged.

The master stateroom is a retreat featuring an island berth with an oversized queen innerspring mattress. Soothing surroundings also await your guests in two additional staterooms. Additionally, both the master and VIP staterooms have private head access.

Additional Information

A 1999 Jolly 365 Hard Body Dinghy with a 40 HP Mercury Outboard is also available

Disclaimer

The Company offers the details of this vessel in good faith but cannot guarantee or warrant the accuracy of this information nor warrant the condition of the vessel. A buyer should instruct his agents, or his surveyors, to investigate such details as the buyer desires validated. This vessel is

offered subject to prior sale, price change, or withdrawal without notice.

Исключения

При продаже яхты исключаются личные вещи владельца.

Отказ от ответственности

Компания предоставляет описание судна или яхты добросовестно, но не может гарантировать точность этой информации, а также не ручается за техническое состояние. Покупатель должен проинструктировать своих агентов или оценщиков исследовать представленную информацию более подробно, по собственному желанию. Продажа судна или яхты, изменение цены или снятие с продажи будет происходить без предварительного уведомления.

ФОТОГРАФИИ

2



3



4



5



6



7



8



9



10



11



12



13



14



15



16



17



18



19



20



21



22



23



24



25



26



27



28



29



30



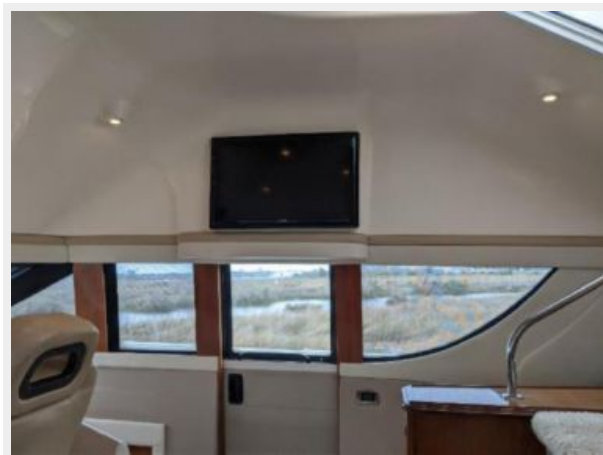
31



32



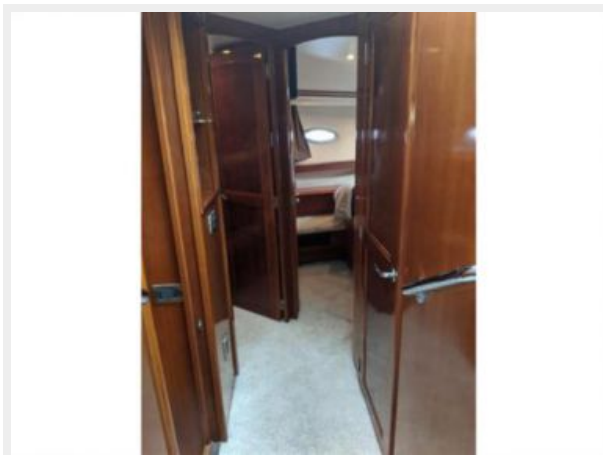
33



34



35



36



37



38



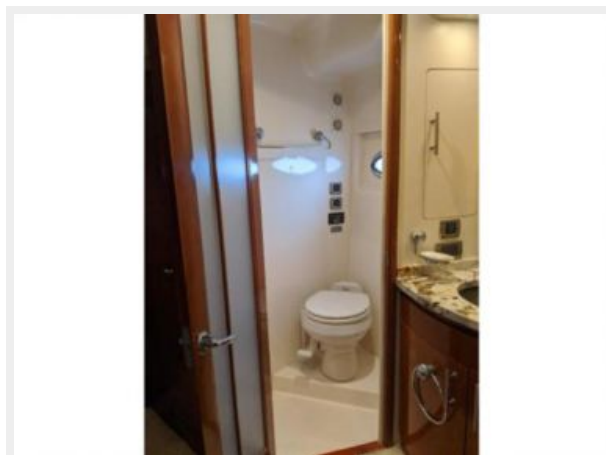
39



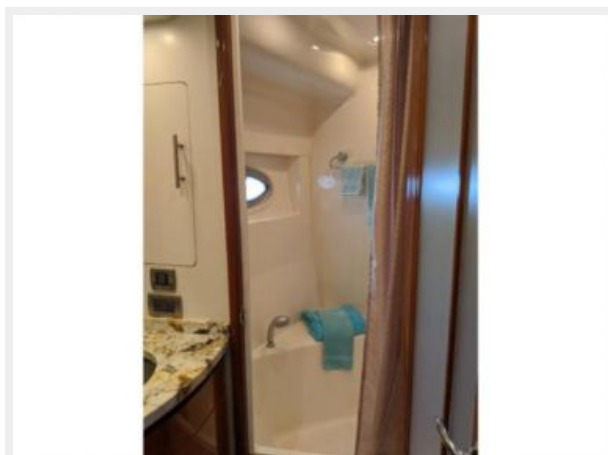
40



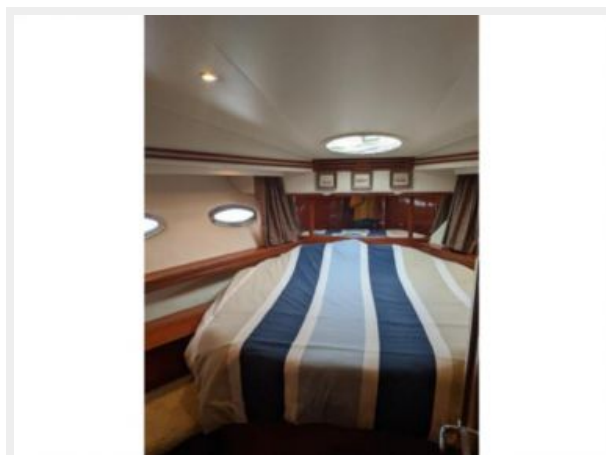
41



42



43



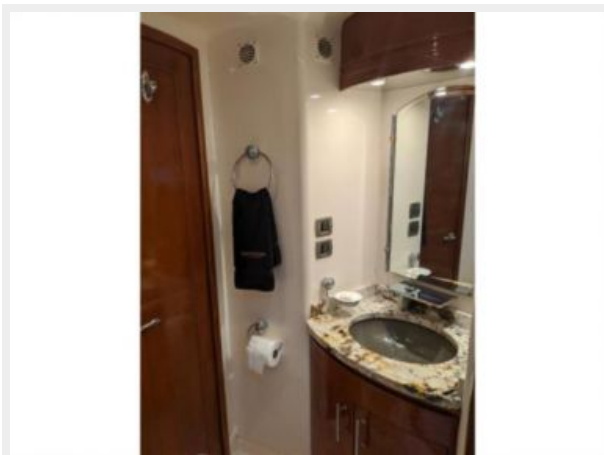
44



45



46



47



48



49



50



51



52



53



54



55



56



57



КОНТАКТЫ

Андрей Шестаков (Andrey Shestakov) – ведущий яхтенный брокер отдела продаж яхт и судов компании Shestakov Yacht Sales Inc. Официальный представитель Shestakov Yacht Sales Inc. для русскоговорящих клиентов в центральном офисе компании в Майами/Форт Лодердейл/Флорида/США.

Контактная информация

Email: andrey@shestakovyachtsales.com

Web: shestakovyachtsales.com

Телефоны

Краснодарский край: **+7(918)465-66-44**

США, Майами, Флорида: **+1(954)274-4435**

Время работы

Понедельник – Суббота: **9:00 - 21:00**
EDT

Воскресенье: **Закрето**

Адрес



Harbour Towne Marina, 850 NE 3rd St,
STE 213, Dania, FL 33004