

DISABELLA — AZIMUT



Builder: [AZIMUT](#)

Year Built: 2016

Model: Cruising Yacht

Price: PRICE ON APPLICATION

Location: United States

LOA: 64' 0" (19.51m)

Beam: 17' 2" (5.23m)

Max Draft: 4' 11" (1.50m)

Our experienced yacht broker, Andrey Shestakov, will help you choose and buy a yacht that best suits your needs **DISABELLA — AZIMUT** from our catalogue. Presently, at Shestakov Yacht Sales Inc., we have a wide variety of yachts available on our sale's list. We also work in close contact with all the big yacht manufacturers from all over the world.

If you would like to buy a yacht **DISABELLA — AZIMUT** or would like help answering any questions concerning purchasing, selling or chartering a yacht, please call **+1(954)274-4435**

TABLE OF CONTENTS

TABLE OF CONTENTS	2
SPECIFICATIONS	5
Overview	5
Basic Information	5
Dimensions	6
Speed, Capacities and Weight	6
Accommodations	6
Hull and Deck Information	6
Engine Information	6
DETAILED INFORMATION	7
Disclaimer	7
Exclusions	7
Disclaimer	7
PHOTOS	8
2	8
3	8
4	8
5	8
6	8
7	8
8	9
9	9
11	9
10	9
12	9
13	9
14	10
15	10

16	10
17	10
18	10
19	10
20	11
21	11
22	11
23	11
25	11
24	11
26	12
27	12
28	12
29	12
30	12
31	12
32	13
33	13
35	13
34	13
36	13
37	13
38	14
39	14
41	14
40	14
42	14
43	14
44	15

45	15
46	15
47	15
48	15
49	15
51	16
50	16
52	16
53	16
54	16
55	16
56	17
57	17
58	17
59	17
CONTACTS	18
Contact details	18
Telephones	18
Office hours	18
Address	18

SPECIFICATIONS

Overview

Disabella is the latest 64 Flybridge model on the market. She is the finest example of Italian styling and luxury. Her Flybridge and cockpit are among the largest in class. The main salon is flooded with natural lighting with large windows and a U-shaped sofa to port that seats six. To starboard a long cabinet that houses her entertainment center.

Disabella is a three stateroom/three head layout. The full-beam master is amidship and features an offset queen bed, two-seat dinette, and panoramic views from the port and starboard windows. The VIP Stateroom has an island bed, and the second guest stateroom has two single beds. Aft, you will find crew quarters with room for two.

She's powered by Caterpillar C18's and can cruise at 26-28 knots with top speeds upwards of 30 knots.

Notable Features:

- Bow and Stern Thrusters
- Seakeeper 9 Gyro Stabilizer
- Upgraded 23kw Gen Set
- Xenta Joystick
- Custom "Miami Silver" Painted Hull
- Raymarine Electronics Package
- Teak Accents on Aft Deck, Flybridge, and Side Decks
- Hardtop with Retractable insert and Sun Shade
- Custom Blue LED lighting

And much more.

Disabella can easily be seen in Dania Beach, FL. She is located minutes from the Fort Lauderdale airport. Showings by appointment only.

Basic Information

Category: Cruising Yacht

Model Year: 2016

Year Built: 2016

Country: United States

Fly Bridge: Yes

Dimensions

LOA: 64' 0" (19.51m)

Beam: 17' 2" (5.23m)

Max Draft: 4' 11" (1.50m)

Speed, Capacities and Weight

Water Capacity: 258 Gallons

Fuel Capacity: 1030 Gallons

Accommodations

Total Cabins: 3

Hull and Deck Information

Hull Material: Fiberglass

Engine Information

Engines: 2

Manufacturer: Caterpillar

Model: C18

Engine Type: Inboard

Fuel Type: Diesel

DETAILED INFORMATION

Disclaimer

The Company offers the details of this vessel in good faith but cannot guarantee or warrant the accuracy of this information nor warrant the condition of the vessel. A buyer should instruct his agents, or his surveyors, to investigate such details as the buyer desires validated. Hours listed may vary from actual hours due to recent use. Purchaser is encouraged to verify hours prior to purchase. This vessel is offered subject to prior sale, price change, or withdrawal without notice.

Exclusions

Owner's personal belongings.

Disclaimer

The Company offers the details of this vessel or yacht in good faith but cannot guarantee or warrant the accuracy of this information nor warrant the condition of the vessel. A buyer should instruct his representatives, agents, or his surveyors, to investigate such details as the buyer desires validated. This vessel or yacht is offered subject to prior sale, price change, or withdrawal without notice.

PHOTOS

2



3



4



5



6



7



8



9



10



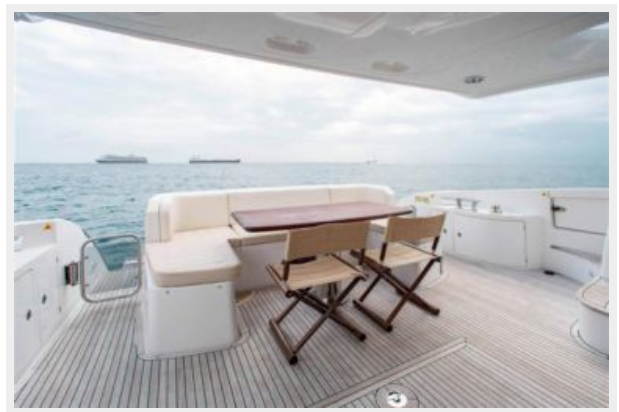
11



12



13



14



15



16



17



18



19



20



21



22



23



24



25



26



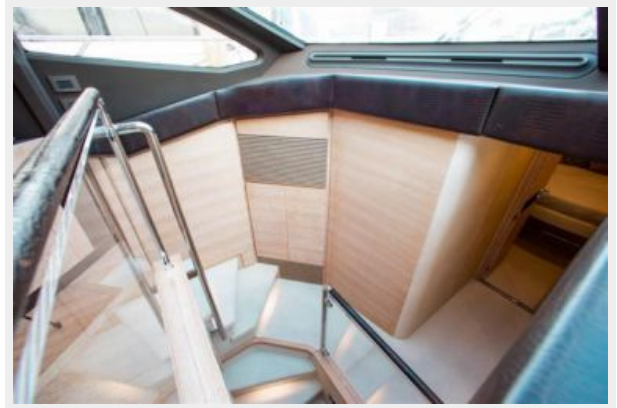
27



28



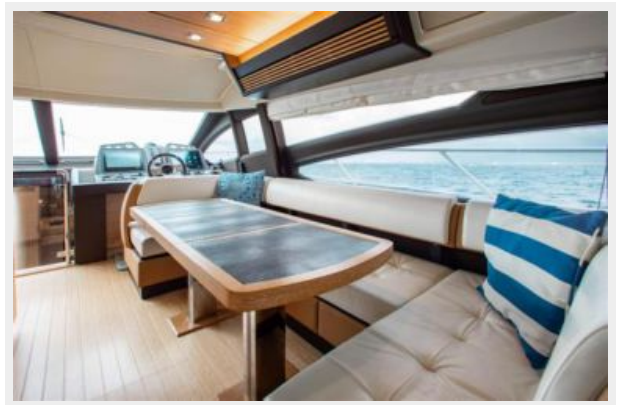
29



30



31



32



33



34



35



36



37



38



39



40



41



42



43



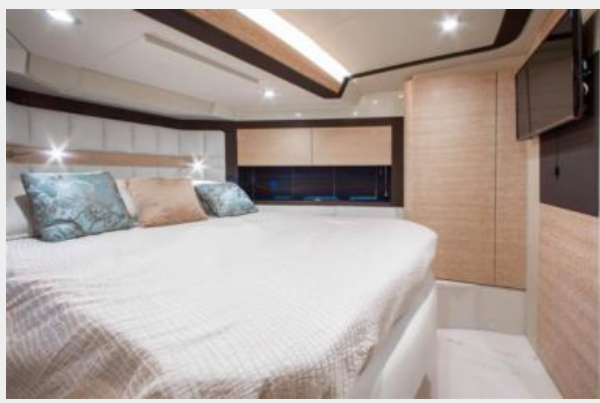
44



45



46



47



48



49



50



51



52



53



54



55



56



57



58



59



CONTACTS

Andrey Shestakov, leading yacht broker of the sales department of Shestakov Yacht Sales Inc. Shestakov Yacht Sales Inc., the official representative of the Miami/Fort Lauderdale FL headquarters.

Contact details

Email: andrey@shestakovyachtsales.com

Web: shestakovyachtsales.com/en/

Telephones

USA: +1(954)274-4435

Office hours

Monday – Saturday: **9:00 - 21:00** EDT

Sunday: **closed**

Address



Harbour Towne Marina, 850 NE 3rd St,
STE 213, Dania, FL 33004