

SHALIMAR — AZIMUT



Builder: AZIMUT

Year Built: 1994

Model: Motor Yacht

Price: PRICE ON APPLICATION

Location: United States

LOA: 118' 0" (35.97m)

Beam: 24' 0" (7.32m)

Max Draft: 5' 5" (1.65m)

Cruise Speed: 12 Kts. (14 MPH)

Max Speed: 17 Kts. (20 MPH)

Our experienced yacht broker, Andrey Shestakov, will help you choose and buy a yacht that best suits your needs **SHALIMAR — AZIMUT** from our catalogue. Presently, at Shestakov Yacht Sales Inc., we have a wide variety of yachts available on our sale's list. We also work in close contact with all the big yacht manufacturers from all over the world.

If you would like to buy a yacht **SHALIMAR — AZIMUT** or would like help answering any questions concerning purchasing, selling or chartering a yacht, please call **+1(954)274-4435**

TABLE OF CONTENTS

TABLE OF CONTENTS	2
SPECIFICATIONS	4
Overview	4
Basic Information	4
Dimensions	4
Speed, Capacities and Weight	4
Accommodations	4
Hull and Deck Information	5
Engine Information	5
DETAILED INFORMATION	6
SHALIMAR	6
Main Equipment	6
Refit 2019-2021	8
Refit 2016	9
Refit 2015	10
Exclusions	10
Disclaimer	10
PHOTOS	11
FE498D3F-77D5-41B8-B7F9-12F16B4211F2	11
E045E07D-5AA7-4978-8945-12FD77796283	11
99C1AFCE-1437-45F3-846D-DBA76FEAC6E7	11
988CA4B1-2556-448F-92C0-4DCB3EB00F56	11
FA8D188E-96EA-4A12-82AD-C87E549EBE92	11
6D0B2D5C-9C81-4D3C-BD58-69E524AE7E84	11
E20068A8-BD2D-4BB7-B9CC-793B2E14A49A	12
745228EB-C650-4046-8E9C-C0A6B967DA12	12
3FB95101-0C33-46F6-BE00-536068C004E3	12
71C1CD9A-0930-4053-B035-513979E02D32	12

4E61762F-53B9-4A76-BAAA-98C4747BBC47	12
1D6486A0-5263-4C01-A76F-666947E950F1	12
F8EED3EB-FCE7-4FEA-A9D3-0CAC3AC0E910	13
754BD7AD-2681-4956-85DB-1FD6FA085D87	13
AFF5AA34-22EB-49D3-A5C3-7797D0972A74	13
AA5F4FA4-58C1-4681-A3E1-398A005FED99	13
148584BC-A607-449E-99B6-56F8E6CE724F	13
E248459F-2441-4951-845B-F9FF6737A3C1	13
shalimar engine room	14
80B55B7D-B3D9-431A-8DBB-89A9777D9BFA	14
CONTACTS	15
Contact details	15
Telephones	15
Office hours	15
Address	15

SPECIFICATIONS

Overview

SHALIMAR was built by the Benetti Shipyard and designed by Terence Disdale. She features a five stateroom layout with an on-deck master suite and four guest staterooms. Exquisite Italian marbles and walnut woods complement the interior throughout. A few standout spaces onboard include the panoramic sky lounge, oversized sunbeds on the foredeck, and a unique observation deck. In addition, her shallow draft allows guests to explore anchorages that most vessels of this size are unable to access. The ability to cruise anywhere in the Bahamas and other remote destinations worldwide makes SHALIMAR the ideal yacht for charter guests and families.

Basic Information

Category: Motor Yacht	Model Year: 1994
Year Built: 1994	Refit Year: 2019
Country: United States	

Dimensions

LOA: 118' 0" (35.97m)	Beam: 24' 0" (7.32m)
Max Draft: 5' 5" (1.65m)	

Speed, Capacities and Weight

Cruise Speed: 12 Kts. (14 MPH)	Max Speed: 17 Kts. (20 MPH)
Water Capacity: 800 Gallons	Fuel Capacity: 4996 Gallons

Accommodations

Total Cabins: 5	Total Heads: 6
-----------------	----------------

Hull and Deck Information

Hull Material: Fiberglass

Engine Information

Engines: 2

Manufacturer: MTU

Model: 12V396TB94

Engine Type: Inboard

Fuel Type: Diesel

DETAILED INFORMATION

SHALIMAR

SHALIMAR was built by the Benetti Shipyard and designed by Terence Disdale. She features a five stateroom layout with an on-deck master suite and four guest staterooms. Exquisite Italian marbles and walnut woods complement the interior throughout. A few standout spaces onboard include the panoramic sky lounge, oversized sunbeds on the foredeck, and a unique observation deck. In addition, her shallow draft allows guests to explore anchorages that most vessels of this size are unable to access. The ability to cruise anywhere in the Bahamas and other remote destinations makes SHALIMAR the ideal yacht for charter guests and families.

Main Equipment

Main Engines: (2) MTU 12V396TB94 2,550 HP

Machinery

- ZF gearboxes
- (2) PTO-driven hydraulic pumps mounted on main engines. Exhaust discharge on the bottom well below the waterline through hydrodynamically shaped outlet scoops. Polished stainless steel used extensively throughout the engine room.
- Naiad stabilizers.
- Bow Thruster: 18" Hydro Marine 60 HP
- Fuel: 4,996 gallons in (6) aluminum tanks
- Water: 800 gallons in (2) epoxy coated aluminum tanks
- Holding Tanks: 478 gallons gray water in (3) aluminum tanks, 770 gallons black water in (3) aluminum tanks with high-level alarms and auto pumps
- (2) Matrix watermakers with high capacity pre-filtration and ultraviolet sterilization filters

Generators & Electricity

- Output: 60Hz 3-phase with sound shields
- (2) Northern Lights Generators 50Kw
- 100 Amp shore power system with a 50KVA Atlas frequency converter
- AC electrical System: 120v single phase 60Hz
- DC Electrical System: 24v 208v 3-phase

Communication Systems

- SATCOM M with PABX system
- SAT-TV System: SeaTel digital, gyro-stabilized
- Telephone System: Magnavox fax and phone
- SSB: Furuno 100watt

- (2) Sailor VHF

Navigation Systems

- (2) Furuno Radar 24mi and 72mi
- Plath Autopilot
- B&G depth sounder HS921
- GPS: Trimble NavTrac
- B&G Wind/Speed Log HS921
- Furuno Echo Sounder
- Searchlight Systems: Sanshin with controls from wheelhouse and flybridge
- Closed-circuit TV between wheelhouse and engine room

Entertainment System

Video Equipment

- Sony multi-standard 25" color TV
- Sony multi-standard 17" TV and VCR in all guest cabins
- Full entertainment center in crew mess

Audio Equipment

- Sony audio equipment with surround sound woofer system and CD
- Color TV in owner's stateroom with CD, cassette, stereo
- TV, CD, VCR, stereo in captain's cabin

Galley & Laundry Equipment

Main Galley Equipment

- Miele Microwave
- Miele Dual ovens with convection
- Miele Cooktop with 4 - burner and 2 grills
- (3) Miele stainless steel refrigerators, (2) Custom Stainless steel freezers
- Sub Zero icemaker and refrigerator (Flybridge bar)
- Sub Zero refrigerator (Aft deck)
- (2) Commercial Espresso machines
- Hobart Dishwasher (LX18H) commercial size with chemical rinse attachment.

Tenders

- 15' Novurania with 90hp Yamaha

Deck Equipment

- (2) Electric Sanguineti Windlass System: with chain gypsy
- (2)Aft electric deck capstans

- (2) 400' 14mm Anchor chain
- Boat Crane and Davits: Electro-hydraulic on tender deck with 2200 lbs
- Stainless steel passerelle with teak platform
- Integral transom swim platform with stainless steel safety rails
- (2) Bulwark doors port and starboard
- Side boarding ladder
- Chain washing system
- Removable tender chocks
- High-pressure deck wash systems
- Saltwater deck wash system

Cameras/ Monitors

- Side and aft decks, includes switches, (2) monitors and security system wired to all TV sets, security locks in all main entrance doors including engine room

Fire/Safety Equipment

- ABS fire fighting system
- Portable fire extinguishers
- (2) Avon life rafts
- Life Rings: (4) Lifebuoys with automatic lights

Refit 2019-2021

- Hull completely repainted
- Superstructure completely repainted
- New bottom paint
- All new teak decking
- New cap rail
- New interior soft goods
- New headliners in main salon
- New LED lighting throughout
- New closed-circuit security cameras and updated operating system
- Electronics updated
- Technical spaces repainted and polished
- Completely rebuilt Atlas converter
- Engines repainted
- Engines inspected and serviced as necessary
- Plumbing updated
- Rebuilt all toilets
- A/C updated
- All new compressors
- Chillers replaced as necessary

- Installed forward-facing sonar

Refit 2016

Bottom painted & antifouling coating applied

New overboard pump installed for aft grey water tank

New mechanical seal installed on port main engine shaft

Stabilizer

- Fins removed and seals replaced
- New hydraulic actuating cylinders for fins installed
- New hydraulic hoses

Air conditioning

- Chill water supply lines chemically cleaned
- New Seawater circulating pump impeller and seals
- New a/c unit installed in crew mess
- Chill water lines passing under engineer's cabin and electrical switchboard reinsulated

Galley refrigerator system serviced

New control air & ship service air compressors installed

New transfer pump installed for sludge tank

Port Generator

- New starter motor installed
- New exhaust muffler installed

Starboard Main Engine

- New exhaust manifold O-rings & sealing ring
- Plate cooler serviced
- New seawater supply piping to engine heat exchanger

Port Main Engine

- New starter motor installed
- New speed sensor installed

Engine room aft bilge suction piping replaced

Engine room aft sea chest manifold and valves replaced

New low-pressure supply pump for large reverse osmosis unit installed

KaMeWa system

- New hydraulic hoses
- New hydraulic cylinders for buckets
- New hydraulic PTO's installed at port & stbd engine
- Starboard power pack serviced

Refit 2015

- New exhaust system, re-engineered and installed
- All sea valves removed, replaced, and serviced where necessary.
- KaMeWa Jet drives serviced and replaced all hydraulic seals.
- Replaced all zinc anodes.
- Soda blasted bottom, jet drives, and recoated with antifouling.
- Top End overhaul on Port & Starboard main engines including but not limited to cylinder heads/cylinder sleeves valve seats & guides etc.
- Port & Starboard generators serviced including valve adjustment and clearance
- New air compressor installed complete with new tank.

Exclusions

Owner's personal belongings.

Disclaimer

The Company offers the details of this vessel or yacht in good faith but cannot guarantee or warrant the accuracy of this information nor warrant the condition of the vessel. A buyer should instruct his representatives, agents, or his surveyors, to investigate such details as the buyer desires validated. This vessel or yacht is offered subject to prior sale, price change, or withdrawal without notice.

PHOTOS

FE498D3F-77D5-41B8-B7F9-12F16B4211F2 E045E07D-5AA7-4978-8945-12FD77796283



99C1AFCE-1437-45F3-846D-
DBA76FEAC6E7



988CA4B1-2556-448F-92C0-4DCB3EB00F56



FA8D188E-96EA-4A12-82AD-
C87E549EBE92



6D0B2D5C-9C81-4D3C-BD58-
69E524AE7E84



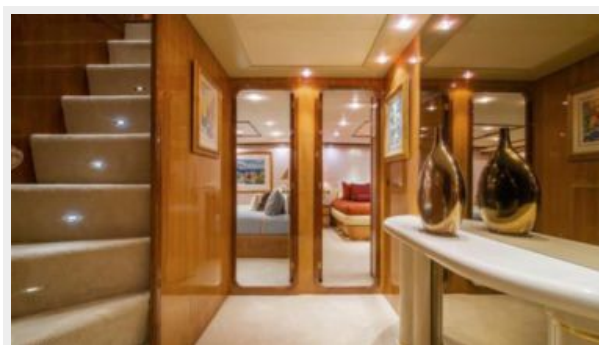
**E20068A8-BD2D-4BB7-B9CC-
793B2E14A49A**



745228EB-C650-4046-8E9C-C0A6B967DA12



3FB95101-0C33-46F6-BE00-536068C004E3 71C1CD9A-0930-4053-B035-513979E02D32



1D6486A0-5263-4C01-A76F-666947E950F1



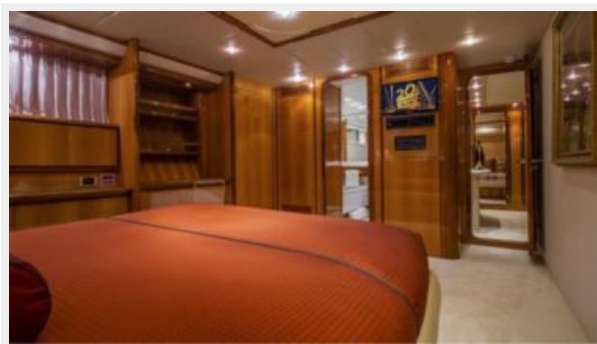
**4E61762F-53B9-4A76-BAAA-
98C4747BBC47**



**F8EED3EB-FCE7-4FEA-A9D3-
0CAC3AC0E910**



754BD7AD-2681-4956-85DB-1FD6FA085D87



AA5F4FA4-58C1-4681-A3E1-398A005FED99



**AFF5AA34-22EB-49D3-A5C3-
7797D0972A74**



148584BC-A607-449E-99B6-56F8E6CE724F **E248459F-2441-4951-845B-F9FF6737A3C1**



shalimar engine room

**80B55B7D-B3D9-431A-8DBB-
89A9777D9BFA**



CONTACTS

Andrey Shestakov, leading yacht broker of the sales department of Shestakov Yacht Sales Inc. Shestakov Yacht Sales Inc., the official representative of the Miami/Fort Lauderdale FL headquarters.

Contact details

Email: **andrey@shestakovyachtsales.com**

Web: shestakovyachtsales.com/en/

Telephones

USA: **+1(954)274-4435**

Office hours

Monday – Saturday: **9:00 - 21:00 EDT**

Sunday: **closed**

Address



Harbour Towne Marina, 850 NE 3rd St,
STE 213, Dania, FL 33004