

## TWO DAZE OFF — CABO



**Builder:** CABO

**Year Built:** 2006

**Model:** Cruising Yacht

**Price:** PRICE ON APPLICATION

**Location:** United States

**LOA:** 40' 0" (12.19m)

**Beam:** 15' 9" (4.80m)

**Cruise Speed:** 25 Kts. (29 MPH)

**Max Speed:** 29 Kts. (33 MPH)

Our experienced yacht broker, Andrey Shestakov, will help you choose and buy a yacht that best suits your needs **Two Daze Off — CABO** from our catalogue. Presently, at Shestakov Yacht Sales Inc., we have a wide variety of yachts available on our sale's list. We also work in close contact with all the big yacht manufacturers from all over the world.

If you would like to buy a yacht **Two Daze Off — CABO** or would like help answering any questions concerning purchasing, selling or chartering a yacht, please call **+1(954)274-4435**

# TABLE OF CONTENTS

TABLE OF CONTENTS	2
SPECIFICATIONS	5
Overview	5
Basic Information	5
Dimensions	5
Speed, Capacities and Weight	5
Accommodations	6
Hull and Deck Information	6
Engine Information	6
DETAILED INFORMATION	7
Galley	7
Cockpit	7
Generator	8
Tower	8
Electronics/Electrical	8
Updates	9
Head	9
Engine Room and Mechanical	9
Deck and Hull	10
Salon	11
Forward Stateroom	11
Helm	11
Helm Console	12
Exclusions	12
Disclaimer	12
PHOTOS	13
40_cabo_two_daze_off_profiles_2	13
40_cabo_two_daze_off_profiles_8	13

40_cabo_two_daze_off_profiles_10	13
40_cabo_two_daze_off_profiles_11	13
40_cabo_two_daze_off_profiles_13	13
40_cabo_two_daze_off_cockpit_2	13
40_cabo_two_daze_off_cockpit_3	14
40_cabo_two_daze_off_cockpit_5	14
40_cabo_two_daze_off_cockpit_7	14
40_cabo_two_daze_off_cockpit_6	14
40_cabo_two_daze_off_cockpit_9	15
40_cabo_two_daze_off_cockpit_8	15
40_cabo_two_daze_off_bridge_deck_2	15
40_cabo_two_daze_off_bridge_deck_1	15
40_cabo_two_daze_off_bridge_deck_4	16
40_cabo_two_daze_off_bridge_deck_3	16
40_cabo_two_daze_off_bridge_deck_6	16
40_cabo_two_daze_off_bridge_deck_5	16
40_cabo_two_daze_off_bridge_deck_7	17
40_cabo_two_daze_off_bridge_deck_8	17
40_cabo_two_daze_off_bridge_deck_10	17
40_cabo_two_daze_off_bridge_deck_9	17
40_cabo_two_daze_off_bridge_deck_11	18
40_cabo_two_daze_off_bridge_deck_12	18
40_cabo_two_daze_off_bridge_deck_13	18
40_cabo_two_daze_off_bridge_deck_14	18
40_cabo_two_daze_off_galley_1	18
40_cabo_two_daze_off_galley_2	18
40_cabo_two_daze_off_galley_3	19
40_cabo_two_daze_off_galley_4	19
40_cabo_two_daze_off_galley_5	19

40_cabo_two_daze_off_head_1	19
40_cabo_two_daze_off_head_3	20
40_cabo_two_daze_off_head_2	20
40_cabo_two_daze_off_salon_1	20
40_cabo_two_daze_off_salon_2	20
40_cabo_two_daze_off_salon_4	21
40_cabo_two_daze_off_salon_3	21
40_cabo_two_daze_off_salon_5	21
40_cabo_two_daze_off_stateroom_1	21
40_cabo_two_daze_off_stateroom_2	22
40_cabo_two_daze_off_stateroom_3	22
40_cabo_two_daze_off_stateroom_4	22
40_cabo_two_daze_off_tower_1	22
40_cabo_two_daze_off_tower_2	22
40_cabo_two_daze_off_tower_3	22
40_cabo_two_daze_off_engine_room_1	23
40_cabo_two_daze_off_engine_room_2	23
40_cabo_two_daze_off_engine_room_3	23
40_cabo_two_daze_off_engine_room_4	23
CONTACTS	24
Contact details	24
Telephones	24
Office hours	24
Address	24

# SPECIFICATIONS

## Overview

1. New Fridge & Freezer 2018
2. New Air Handler 2019 State Room
3. New Air Handler Cabin 2019
4. 8-2019 Haul and Bottom Paint & replace thru hull scoops
5. 2020 New tower control cover
6. New macerator pump 2020
7. 10-2019 New Icom M400BB Black Box Com B VHF Radio in tower & new VHF antennas
8. 8-2019 New Furuno remote depth display Rd33 tower & helm. New Transducer
9. 8-2019 Trim tab switches installed in tower
10. Full Detail & Wax 2021
11. New Rugs Helm Deck 2019
12. New Rugs Cabin 2020
13. New Exhaust Risers Port & Starboard 2018
14. 2016 New Curtains
15. 3-2021 Coolers cleaned and tested

## Basic Information

**Category:** Cruising Yacht

**Sub Category:** Express

**Model Year:** 2007

**Year Built:** 2006

**Country:** United States

**Vessel Top:** Full / Tuna Tower

## Dimensions

**LOA:** 40' 0" (12.19m)

**Beam:** 15' 9" (4.80m)

## Speed, Capacities and Weight

**Cruise Speed:** 25 Kts. (29 MPH)

**Max Speed:** 29 Kts. (33 MPH)

**Water Capacity:** 75 Gallons

**Fuel Capacity:** 550 Gallons

---

## Accommodations

---

**Total Cabins:** 1

---

## Hull and Deck Information

---

**Hull Material:** Other

---

## Engine Information

---

**Engines:** 2

**Manufacturer:** Caterpillar

**Model:** C12

**Engine Type:** Inboard

**Fuel Type:** Diesel

---

# DETAILED INFORMATION

---

## Galley

---

- Teak and Holly Sole
- Spacious Galley
- Storage cabinets above and below
- AC Duplex Outlet
- Cooktop, Ceramic, Two-Burner, Recessed with Corian Cover
- Corian Countertop with Custom Corian Sea Rails
- Sink, Molded-In
- Latches, Positive, Cabinet Doors and Drawers
- Microwave / Convection Oven
- Refrigerator / Freezer, Side-by-Side, AC / DC
- Under Cabinet Lighting, Recessed Halogen

## Cockpit

---

- Cockpit coaming padding High-Density Foam, White Vinyl Covered
- CAT electronic single lever controls Starboard side in Cockpit
- Fresh and saltwater wash downs
- Drink Box with Freezer Plate
- Port in deck insulated Fish Box with Freezer Plate & Macerator pump
- Starboard in deck insulated fish box with Macerator Pump
- 2 Hubbell 24v Outlets under gunwales
- Storage under gunwales
- Rod storage under helm deck bench
- (6) flush mount rod holders
- (8) rod holders on tower legs
- (6) rod holders on aft tower rail
- (2) rod holders upper tower
- 4 Rod Rocket Launcher
- RUPP Marine Outriggers with center Rigger
- Bait Prep Center with Sink, Rigging Board Fitted with Custom Lid, Gas Spring, Full Length Stainless Steel Piano Hinge and Custom Latch
- Livewell, 48 Gallon, Molded into Transom with Large Overboard Drain and LED Lighting
- Courtesy Lighting Under Gunwales and Helm Deck Toe Kick
- Hatches, Lazarett and Fish Boxes, Heavy-duty, Gasketed,
- Scuppers, Self Bailing
- Transom Door with Top Gate, Extreme duty, Polished Stainless Steel Hardware

---

## Generator

---

12.6 Kw Westerbeke FW cooled generator

---

## Tower

---

American Towers tuna tower

- American Towers tuna tower
- Spotlight with remote
- (6) rod holders on aft tower rail
- (2) rod holders upper tower
- Icom M400BB Black Box Com B VHF Radio in tower & 2 VHF antennas
- Tower Wheel, Stainless Steel
- Trim Tab Switches
- RD33 Display
- SIMRAD AP 26 Auto Pilo Controler
- ACR Spotlight & Remote Controller
- Furno Navnet 10" Display
- Vinyl Cove

---

## Electronics/Electrical

---

- Furuno 1964CBB/6'ANT 25KW NAVNET/With Chart
- Furuno 1920CBB NAVNET/With Chart
- BBFF3 Sounder Mod.
- Furuno 15" MU155C Monitor
- 2KW 50KHZ Ducer
- 2KW 200KHZ Ducer
- RD30 Displays with Smart Sensor
- 1720 VX2 NAVNET/With chart
- ICOM602 VHF and Remote Mic
- ICOM 422 ICOMVHF with Remote Mic
- SIMRAD AP 26 Auto Pilot/RPU80
- 12kW Westerbeke generator
- 24v DC electrical system
- 12V distribution panel for electronics
- 50 Foot Shore Power Cord with Retractable Glendinning
- Cable Master, 220V, 50 AMP
- Battery Charger, Automatic with Thermal Cut Out
- Battery On/Off Switches, Vapor-Proof



- Battery Paralleling, Automatic, with Manual Switch at Helm
- Circuit Breaker Protection Throughout
- Distribution Panel, Custom, AC/DC Electrical, with Line Voltage and Load Meters
- Horn, Dual Air Trumpet
- LED Lights, Engine Room
- Halogen Lights, Interior, DC

## Updates

---

1. New Fridge & Freezer 2018
2. New Air Handler 2019 State Room
3. New Air Handler Cabin 2019
4. 8-2019 Haul and Bottom Paint & replace thru hull scoops
5. 2020 New tower control cover
6. New macerator pump 2020
7. 10-2019 New Icom M400BB Black Box Com B VHF Radio in tower & new VHF antennas
8. 8-2019 New Furono remote depth display Rd33 tower & helm. New Transducer
9. 8-2019 Trim tab switches installed in tower
10. Full Detail & Wax 2021
11. New Rugs Helm Deck 2019
12. New Rugs Cabin 2020
13. New Exhaust Risers Port & Starboard 2018
14. 2016 New Curtains
15. 3-2021 Coolers cleaned and tested

## Head

---

- Oversized walk-in head with separate shower stall
- Fresh Water Gauge
- AC Duplex Outlet
- Corian Countertop
- Vac-U-Flush head with holding tank and overboard pump-out
- Latches, Positive, Cabinet Doors and Drawers
- Lighting, Recessed Halogen
- Shower Stall, with Automatic Shower Sump Pump with Corian Floor
- Toiletry Storage Cabinet, Corian Framed with Mirror Doors
- Vanity, Custom

## Engine Room and Mechanical

---

- Caterpillar C-12 A Cert 710 HP Port 2600 Hours Starboard 2600 Hours
- Heat exchangers and after coolers cleaned & tested 2021
- ZF Transmissions ZF325-1A
- Westerbeke generator 12.6 Kw FW Cooled 2700 Hours
- Bilge Pumps (4), Automatic
- Electronic Controls with Trolling Valves, Engine Synchronizer and Back up Controls
- Engine Alarm System
- Engine Room Blowers (2), DC
- SeaFire Extinguishing System, Manual / Automatic
- Racor Fuel Filters with Water Separators on Main Engines and Generator
- Fuel Lines, Metal Braided, Fire-Retardant
- HelmDeck Lift System, Hydraulic, Marine Grade
- High Water Bilge Alarms (3)
- Holding tank, 22 Gallon, with Monitor, Macerator and Dockside Discharge
- Hose Sleeves, Braided, on all Nylon Hydraulic Steering Lines
- Reverso Oil Change System, Mains, Gears, and Generator
- Hydraulic Power Steering
- Rudders, Bronze, High-Strength, with High Load Bearings (Low Friction, Precise Control)
- Sea Cocks, UL Approved for Marine Application Bronze, Fitted on all Thru-Hulls Below Water Line
- Water Intake Scoops, Bronze, High-speed, with Integral Seawater Strainers
- Main Engine Sea Strainers
- 26" Veem Props 660.4 x 33.5 x 6.90 4 Blades
- Engine Room Camera
- Electric Fuel Priming Pumps

---

## Deck and Hull

---

- Boot Striping Red
- Solid Fiberglass Bottom
- Core Construction from Chine to Sheer
- Stainless Steel Rub Strip on Face of White High Density PVC Rub Rail
- Trim Tabs, Fully Recessed
- Anchor Roller Assembly, Recessed, Custom Stainless Steel
- Anchor with lines
- Bow Cleats, 12" Stainless Steel
- Spring Line Cleats, 10" Stainless Steel
- Stern Cleats, 12" Stainless Steel
- Bow Pulpit, Integral Molded Fiberglass
- Custom Deck Rails, Aluminum
- Deck Surface, Molded-In, Non Skid
- Windlass, Heavy-Duty, DC Electric, Remote at Helm and Deck Foot Switches
- Windshield Wipers (3), Self-Parking with Pantograph Arms, Intermittent and Separate

### Controls

- Windshield, Side Vents, Heavy Duty Welded Aluminum Construction, Finished in White Powder Coat Paint; Includes Electrically Actuated Center Vent
- Windshield Washer (3), Wet Arms

## Salon

---

- Teak and Holly cabin sole
- Flat Screen TV
- Large Stand up rod storage
- Custom teak Table
- Breaker Panel with Genset gauges
- AC Duplex Outlets
- Access Hatch to Below Deck Equipment with Custom Crate Storage in Bilge
- Interior Wood, Teak, Satin Finish
- Latches, Positive, Cabinet Doors and Drawers
- Ultra leather L-Shaped Lounge Converts to Upper and Lower Sleeping Berths
- Lighting, Recessed Halogen
- Stereo AM/FM/CD/, (2) Speakers

## Forward Stateroom

---

- Large Center line Vee Berth with ample storage
- Under berth drawers
- Flat Screen TV
- AC Duplex Outlet
- Air Conditioning / Heating, 7,000 BTU
- Access to Anchor Rope / Chain Locker
- Berth, Double, Island-Style, 5" Mattress, Bunk Cover
- Foredeck Hatch, with Screen and Sun Shade
- Latches, Positive, Cabinet Doors and Drawers
- Lighting, Recessed Halogen
- Locker, Hanging, Cedar-Lined
- Storage, Rod Lockers (2), with Horizontal Rod Racks

## Helm

---

- Stidd Captain and Co-pilot chairs with covers
- Custom Built in tackle center
- Tackle Drawers with custom dividers
- Cruisair Helm Deck AC 24,000btu

- Companionway Door, Sliding, Opaque with White Acrylic
- L-Shaped Seating, Port, Rod Storage Beneath
- Molded Fiberglass Helm Deck, Hydraulically-Lifted with Cockpit Control Unit
- Fully enclosed strata glass enclosure
- 2 Speakers

---

## Helm Console

- Helm Console, Integrally Molded with cover
- Compass, with Light, Flush-Mounted
- CAT digital engine displays
- CAT electronic single lever controls with sync and trolling mode
- Engine Instrument Panel, Complete Custom Stainless Steel with Audible Warning System
- Fire and Bilge Water Level Alarms
- Helm Wheel, Stainless Steel
- CAT Back-up Control Panel
- Lewmar Anchor Windlass with Remote Helm Controls and Bow Foot Controls
- ACR Spotlight Remote Controller

---

## Exclusions

Owner's personal belongings.

---

## Disclaimer

The Company offers the details of this vessel or yacht in good faith but cannot guarantee or warrant the accuracy of this information nor warrant the condition of the vessel. A buyer should instruct his representatives, agents, or his surveyors, to investigate such details as the buyer desires validated. This vessel or yacht is offered subject to prior sale, price change, or withdrawal without notice.

# PHOTOS

40\_cabo\_two\_daze\_off\_profiles\_2



40\_cabo\_two\_daze\_off\_profiles\_8



40\_cabo\_two\_daze\_off\_profiles\_10



40\_cabo\_two\_daze\_off\_profiles\_11



40\_cabo\_two\_daze\_off\_profiles\_13



40\_cabo\_two\_daze\_off\_cockpit\_2



40\_cabo\_two\_daze\_off\_cockpit\_3



40\_cabo\_two\_daze\_off\_cockpit\_5



40\_cabo\_two\_daze\_off\_cockpit\_7



40\_cabo\_two\_daze\_off\_cockpit\_6





40\_cabo\_two\_daze\_off\_cockpit\_9



40\_cabo\_two\_daze\_off\_cockpit\_8



40\_cabo\_two\_daze\_off\_bridge\_deck\_2



40\_cabo\_two\_daze\_off\_bridge\_deck\_1



40\_cabo\_two\_daze\_off\_bridge\_deck\_4



40\_cabo\_two\_daze\_off\_bridge\_deck\_3



40\_cabo\_two\_daze\_off\_bridge\_deck\_6

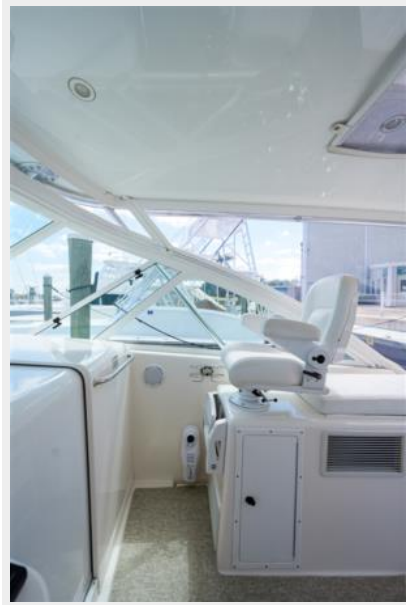


40\_cabo\_two\_daze\_off\_bridge\_deck\_5





40\_cabo\_two\_daze\_off\_bridge\_deck\_7

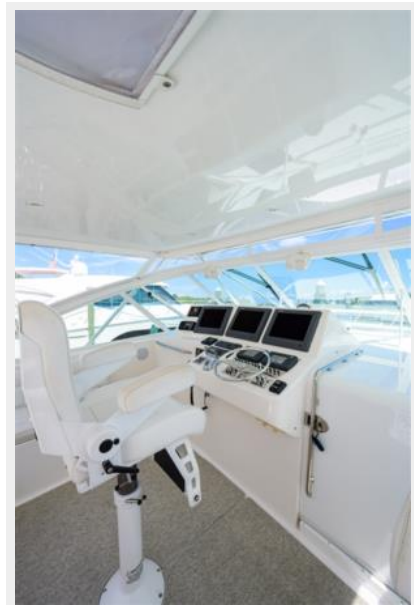


40\_cabo\_two\_daze\_off\_bridge\_deck\_8



40\_cabo\_two\_daze\_off\_bridge\_deck\_10

40\_cabo\_two\_daze\_off\_bridge\_deck\_9



40\_cabo\_two\_daze\_off\_bridge\_deck\_11



40\_cabo\_two\_daze\_off\_bridge\_deck\_12



40\_cabo\_two\_daze\_off\_bridge\_deck\_13



40\_cabo\_two\_daze\_off\_bridge\_deck\_14



40\_cabo\_two\_daze\_off\_galley\_1



40\_cabo\_two\_daze\_off\_galley\_2



40\_cabo\_two\_daze\_off\_galley\_3



40\_cabo\_two\_daze\_off\_galley\_4



40\_cabo\_two\_daze\_off\_galley\_5



40\_cabo\_two\_daze\_off\_head\_1





40\_cabo\_two\_daze\_off\_head\_2



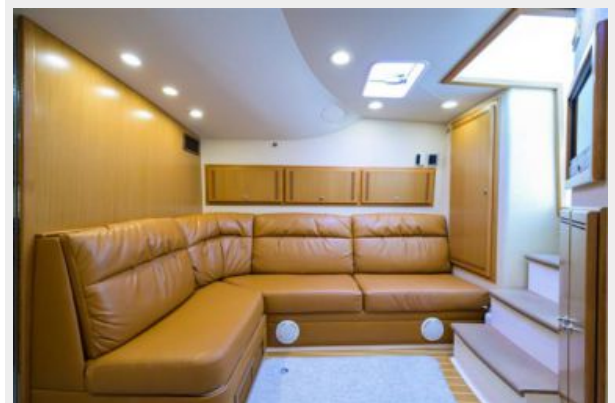
40\_cabo\_two\_daze\_off\_head\_3



40\_cabo\_two\_daze\_off\_saloon\_1



40\_cabo\_two\_daze\_off\_saloon\_2



40\_cabo\_two\_daze\_off\_salon\_4



40\_cabo\_two\_daze\_off\_salon\_3



40\_cabo\_two\_daze\_off\_stateroom\_1



40\_cabo\_two\_daze\_off\_salon\_5



40\_cabo\_two\_daze\_off\_stateroom\_2



40\_cabo\_two\_daze\_off\_stateroom\_3



40\_cabo\_two\_daze\_off\_stateroom\_4



40\_cabo\_two\_daze\_off\_tower\_1



40\_cabo\_two\_daze\_off\_tower\_2



40\_cabo\_two\_daze\_off\_tower\_3





40\_cabo\_two\_daze\_off\_engine\_room\_1



40\_cabo\_two\_daze\_off\_engine\_room\_2



40\_cabo\_two\_daze\_off\_engine\_room\_3



40\_cabo\_two\_daze\_off\_engine\_room\_4



# CONTACTS

---

Andrey Shestakov, leading yacht broker of the sales department of Shestakov Yacht Sales Inc. Shestakov Yacht Sales Inc., the official representative of the Miami/Fort Lauderdale FL headquarters.

## Contact details

---

Email: **andrey@shestakovyachtsales.com**

Web: [shestakovyachtsales.com/en/](http://shestakovyachtsales.com/en/)

## Telephones

---

USA: **+1(954)274-4435**

## Office hours

---

Monday – Saturday: **9:00 - 21:00 EDT**

Sunday: **closed**

## Address

---



Harbour Towne Marina, 850 NE 3rd St,  
STE 213, Dania, FL 33004