

2018 HATTERAS GT54 — HATTERAS



Судостроитель: HATTERAS

Год постройки: 2018

Модель: Sport Yacht

Цена: ЦЕНА ЯХТЫ ПО ЗАПРОСУ

Местонахождение: United States

Длина общая: 53' 10" (16.41m)

Ширина: 17' 3" (5.26m)

Макс. осадка: 4' 2" (1.27m)

Крейс. скорость: 37 Kts. (43 MPH)

Макс. скорость: 40 Kts. (46 MPH)

Купить 2018 Hatteras GT54 — HATTERAS а также выбрать подходящую вам яхту из нашего каталога яхт вам поможет опытный яхтенный брокер Андрей Шестаков. На сегодняшний день компания Shestakov Yacht Sales Inc. имеет большое количество яхт в собственном списке продаж, а также тесно сотрудничает со всеми крупными яхтенными производителями по всему миру.

Для того чтобы купить яхту 2018 Hatteras GT54 — HATTERAS а также проконсультироваться по любому вопросу связанному с покупкой, продажей, чартером яхт позвоните по телефону **+7(918)465-66-44**.

ОГЛАВЛЕНИЕ

ОГЛАВЛЕНИЕ	2
ХАРАКТЕРИСТИКИ	3
Основная информация	3
Размеры	3
Скорость, вместимость и масса	3
Размещение	3
Корпус и палуба	3
Информация о двигателе	4
ПОДРОБНОЕ ОПИСАНИЕ	5
2018 Standard Features	5
Исключения	8
Отказ от ответственности	8
ФОТОГРАФИИ	9
КОНТАКТЫ	17
Контактная информация	17
Телефоны	17
Время работы	17
Адрес	17

ХАРАКТЕРИСТИКИ

Основная информация

Тип судна: Sport Yacht

Подкатегория: Convertible

Модельный год: 2018

Год постройки: 2018

Страна: United States

Размеры

Длина общая: 53' 10" (16.41m)

Ширина: 17' 3" (5.26m)

Макс. осадка: 4' 2" (1.27m)

Скорость, вместимость и масса

Крейс. скорость: 37 Kts. (43 MPH)

Макс. скорость: 40 Kts. (46 MPH)

Водоизмещение: 75000 Pounds

Вместимость воды: 180 Gallons

Вместимость сточного бака: 95 Gallons

Объем топливного бака: 1200 Gallons

Размещение

Всего кают: 3

Корпус и палуба

Материал корпуса: Fiberglass

Информация о двигателе

Двигатели: 2

Производитель: CAT

Модель: C 32

Тип двигателя: Inboard

Тип топлива: Diesel

ПОДРОБНОЕ ОПИСАНИЕ

2018 Standard Features

Exterior Finish / Construction• Isophthalic gelcoat, exterior layer, white (all areas except hull)• Blister resistant vinylester gel coat, clear (hull)• Hull and superstructure painted with a premium linear polyester/polyurethane coating for improved cosmetics & increased durability• Polymer/copper based anti-fouling bottom paint• Boot stripe, linear polyester/polyurethane coating• Decks, non-skid surface, polyurethane paint with polymeric beads• Solid fiberglass, resin-infused hull bottom, with premium vinylester resins• Hull sides of resin infused composite construction with PVC foam core and premium vinylester resins• Solid fiberglass, resin-infused longitudinal stringers• Steel resin infused into longitudinal stringers at key locations to create engine foundations• Bulkheads, athwartships and interior decks of resin-infused composite construction using PVC foam core• Painted black maskHardware & Miscellaneous• Wood bulkheads, cabinetry and trim with a satin polyester finish in cherry or African mahogany• All hardware in satin nickel• Fortress FX-55 anchor, anchor line and deck hawse pipe with anchor tensioner• Bow thruster tube• Four polished stainless-steel spring line cleats with chafing strips, through bolted in aluminum backing plate• Polished stainless-steel bow cleats and chocks with chafing strips, through-bolted in aluminum backing plate• Two polished stainless-steel stern cleats and hawse pipes, through-bolted in aluminum backing plate• Polished anodized welded aluminum rails on bow, side-deck and flybridge, drilled and tapped in aluminum backing plates• Fog bell• Dual air/electric horn• Zincs on rudders and shafts• Black braided nylon mooring lines (6) • Alloy 22 high-strength propeller shafts• Manganese bronze dripless rudder seals• Dripless shaft seals with spare seals• Life jackets (6)• Life ring• Portable “drychem” fire extinguishers (4), U.L. approved type in compliance with United States Coast Guard and ABYC standards• Interceptor trim control• Manganese bronze struts• Stainless-steel rudders• Propellers, Nibral high performance• Reboarding steps to cockpit• Black fenders (3)• Deck plates for fuel and water fills and waste pump out• Heavy duty engine couplings• Anchor locker on bow deckEngine Compartment & Bilge• Pultruded fiberglass rudder shelf• AC fluorescent lights• DC lights• DC exhaust blowers• Twin diesel, freshwater-cooled main engines with electrically controlled marine gears, neutral interlocks, exhaust silencers, engine hour meters, alternators, fuel filters and seawater strainers• FM200 fixed fire extinguishing system for engine compartment with automatic and remote manual controls, plus audible and visual discharge signals• One 21.5kW freshwater-cooled Electronic Quiet Diesel Onan generator(D) with shock mounts, seawater strainer, remote start, fuel/water separator, hour meter, exhaust water separator and sound enclosure• Polyethylene water lines• Freshwater connection• 24-volt DC bilge and sump pumps: three at 3700 gph, two at 2000 gph and four at 1100 gph, with heavy-duty float switches and protective guards• Auxiliary emergency bilge pump, 150 gpm in lazarette• Bronze/chrome-plated ball-valves through-bolted in solid fiberglass on all underwater through hull fittings with electrical bonding throughout• Pressurized 230 volt AC freshwater pump • 230-volt AC 20-gallon electric water heater• Integral fiberglass fuel tank constructed with fire retardant resin and bronze fittings, and coated with fire-retardant paint• Polyethylene water tank• Polyethylene sewage holding tank with 24 volt DC sewage pump, plumbed for dockside pump-out with 3/4 full display and alarm as

part of systems monitor programmable logic controller• 24-volt DC oil changing system for engines, gear and generator with Hatteras patented quick disconnect• U.L. Marine-listed fuel filter/water separator, generator• Sealed shower sumps• U.L. Marine-listed duplex fuel filters/water separators with bypass manifold, engines• Electric fuel priming pumps, engines• Powder coated grab rails• Painted polyurethane engine room and bilges• United States Coast Guard type A1 U.L. Marine- listed fuel lines• Isolated discharge sea chest• 1” stainless-steel steering tie bar with pivoting self aligning ball joint connection at all cylinder and tie bar connections• Insulation in deck• Pick-up sea chests• DC voltmeter in battery panel• Start / stop switches and hour meter• Rubber deck mat between engines• Transducer well, glycol filledElectrical Systems• Two 24 volt banks of heavy-duty, 12 volt marine batteries mounted in fire retardant fiberglass boxes• U.L. 1426 listed boat cable, tin-coated with insulation• 240-volt automatic/programmable battery charger, 50/60 Hz• Automatic battery paralleling system with switch at control console• One 240 volt, 50 amp, retractable shore cord with over-current protection (cockpit)• One 240 volt, 50 amp, shore cord inlet with cord• DC LED lights and fixtures• AC duplex outlet(s) with ground fault protection• Battery control panel with fuses and isolation switches• DC electronics panel with magnetic circuit breakers• AC and DC distribution panels with magnetic circuit breakers• AC switching panel with source selector switches, volt meter, ammeter, frequency meter, generator start/stop controls, and distribution panel selector switches• Navigation lights• Ground fault protection on AC receptacles and lighting circuits• Air conditioning, 42,000 BTU, with reverse- cycle heating• TV antenna, omni-directional• Ventilation fans in attic spaceFlybridge• Systems monitor with programmable logic controller read-out, visual and audible signals for exhaust temperature, alternator, battery voltage, high bilge water, fire warning in engine compartment, fire extinguisher discharge in engine room, AC power loss, smoke detectors, carbon monoxide detectors, and holding tank 3/4 full monitor• Icom VHF, Furuno RD30 depth and temp• Polished anodized welded aluminum rails and stanchions• Two bench seats with vinyl-covered polyfoam cushions and storage underneath• Control station with all necessary switches and dimmable lighted instrument panel• Compass with dimmable light• Pod console with custom wheel and single-lever clutch and throttle controls (electronic) with emergency back-up, engine synchronization, and trolling valve control switches• Hydraulic power-assisted steering• Two (2) adjustable helmchairs• DC AM/FM stereo receiver with CD player and speakers• Neutral interlock switches allowing engine to start in neutral only• Fuel level gauges• Rod storage space in port bench seat• Top-loading insulated drink box• Additional storage areas beneath seat(s) and console• Powder-coated grab rails Cockpit• Molded fiberglass, 135 square feet including mezzanine with seating• Seating with cushions across upper mezzanine• Polished anodized aluminum ladder to flybridge with acrylic steps• Transom door• Fiberglass cockpit boarding step box with storage• Sliding glass door to deckhouse• Stereo speakers with volume control• DC LED overhead lights under flybridge overhang• Molded-in grab rails on cabinside• Hatch with chrome plated brass lock to engine compartment• Freshwater wash down outlet• Shore water connection with pressure-reducing valve• Bait and Tackle Center with 3 drawers• 5.4-cubic-foot bait freezer, port mezzanine• Insulated storage box in mezzanine• Storage tub, lower port mezzanine• Removable 80” fish box with macerator, flush in deck• Storage in steps to deckhouse with chill box in top step• Lazzaretto access through hatch• Aluminum mounting plate laminated in deck for fighting chair• Polished stainless-steel rod holders, flush mount, set of 4• Transom hawsers• Scuppers in cockpit and cockpit

hatchesGalley/Dinette• Amtico vinyl flooring• Fabric headliner installed on track system for service access• Fixed frameless windows with tinted safety glass• Microwave/convection oven covered by cabinet door• DC LED lighting• AC duplex outlet(s) with ground fault protection• Genuine wood inserts to match interior finish on appliance fascia• L-shaped dinette with storage under seat• Solid-surface countertops with sink and storage cabinets made of finished wood• AC undercounter refrigerator and freezer drawer unit• AC four-burner ceramic cooktop• One-half hp continuous feed garbage disposal• Drawers (2) in galley fascia, (4) in upper cabinets behind doorsSalon• Carpeting• Fabric headliner with wood accents installed on track system for service access• Sliding glass door to cockpit• 32" LCD TV• Bose Lifestyle 35 home theater with AM/FM, CD/DVD, and surround sound speakers• Fixed frameless windows with tinted safety glass• DC LED lighting• AC duplex outlet(s) with ground fault protection• L-shaped lounge with rod storage, loose cushions, arm rests and double needle stitching• Throw pillows• Carbon monoxide detector• Smoke detector• HVAC control• Polished stainless-steel threshold at salon doorCompanionway• Carpeting• Fabric headliner installed on track system for service access• Fabric covered hullside(s) and bulkhead(s) installed on track system for service access• Flush panel doors with door stops to staterooms and head(s)• Lighted stairway to salon• DC LED lighting• Access to port & starboard storage, electric panels, and electric water tank gauge with DC light• Wainscoting Master Stateroom• Carpeting• Fabric headliner installed on track system for service access• Fabric covered hullside(s) and bulkhead(s) installed on track system for service access• Queen-sized berth with upholstered headboard and cedar-lined storage underneath• Upholstered berth base• HMC System 1 mattress, spread, throw pillows, pillows, pillow shams, mattress pad and sheets• Cedar-lined hanging locker with doors, shelf and automatic light• Nightstands with drawers• Dresser with drawers• 19" LCD TV• Bose 3-2-1 GS with AM/FM and DVD/CD w/ speakers• Full-length mirror• DC LED lighting• DC low-voltage lights under berth• AC duplex outlet(s) with ground fault protection• Private access to head• Smoke detector• Carbon monoxide detector• HVAC controlBow Guest Stateroom• Carpeting• Fabric headliner installed on track system for service access• Fabric covered hullside(s) and bulkhead(s) installed on track system for service access• Queen-sized tapered berth with upholstered headboard and cedar-lined storage underneath• Upholstered berth base• HMC System 1 mattress, spread, throw pillows, pillows, pillow shams, mattress pad and sheets• Cedar-lined hanging/storage lockers with automatic light• Nightstands, port and starboard• DC AM/FM stereo receiver with CD player and speakers• Full-length mirror• DC LED lighting• AC duplex outlet• Private access to head• Smoke detector• Carbon monoxide detector• HVAC control• Screened overhead hatch with privacy cover• Washer/dryerOptional Bow Guest Stateroom(F)• Carpeting• Fabric headliner installed on track system for service access• Fabric covered hullside(s) and bulkhead(s) installed on track system for service access• Double sized berth to port and single sized berth to starboard, with storage underneath• Upholstered berth base• HMC System 1 mattresses, spreads, throw pillows, pillows, pillow shams, mattress pads and sheets(E)• Cedar-lined hanging/storage lockers with automatic light• DC AM/FM stereo receiver with CD player and speakers• Full-length mirror• DC LED lighting• AC duplex outlet(s) with ground fault protection• Private access to head• Smoke detector• Carbon monoxide detector• SMX HVAC compartment controlled• Screened overhead hatch with privacy cover• Linen storage, port• Washer/dryerStarboard Guest Stateroom• Carpeting• Fabric headliner installed on track system for service access• Fabric covered hullside(s) and bulkhead(s) installed

on track system for service access• Twin berths with storage under outer berth• Upholstered berth base(s)• HMC System 1 mattress, spread, throw pillows, pillows, pillow shams, mattress pad and sheets• Double cedar-lined hanging locker with doors, shelf and automatic light• Nightstand with drawers• Full-length mirror• DC LED lighting• AC duplex outlet(s) with ground fault protection• Private access to head• Smoke detector• Carbon monoxide detector• HVAC controlMaster Head• Amtico vinyl flooring• Fabric headliner installed on track system for service access• Wallcovering• Solid-surface countertop, backsplash, and side splash with integral sink• Hardwood baseboards• Stall shower with door and automatic sump pump• Storage cabinet with mirror above sink• Base cabinet with storage• Towel bar• Freshwater toilet• 120 volt AC air freshener blower• DC LED lighting• AC duplex outlet(s) with ground fault protection• Plexi mirror around upper cabinet• Holding tank 3/4 full indicator lightsGuest Head• Amtico vinyl flooring• Fabric headliner installed on track system for service access• Wallcovering• Solid-surface countertop, backsplash, and side splash with integral sink• Hardwood baseboards• Stall shower with door and automatic sump pump• Storage cabinet with mirror• Base cabinet to match interior finish with storage• Towel bar• Freshwater toilet• 120V AC air freshener blower• DC LED lighting• AC duplex outlet(s) with ground fault protection• Plexi-mirror around upper cabinet• Holding tank 3/4 full indicator lights

Исключения

При продаже яхты исключаются личные вещи владельца.

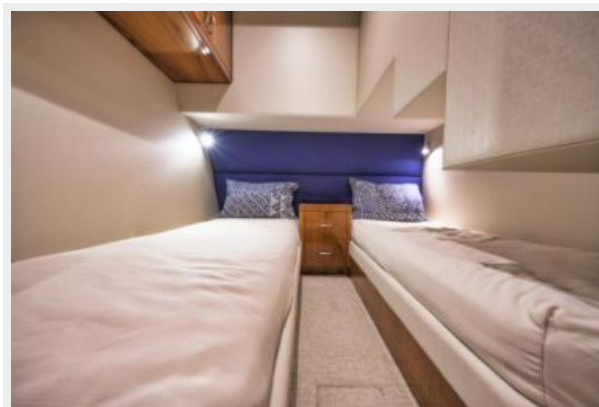
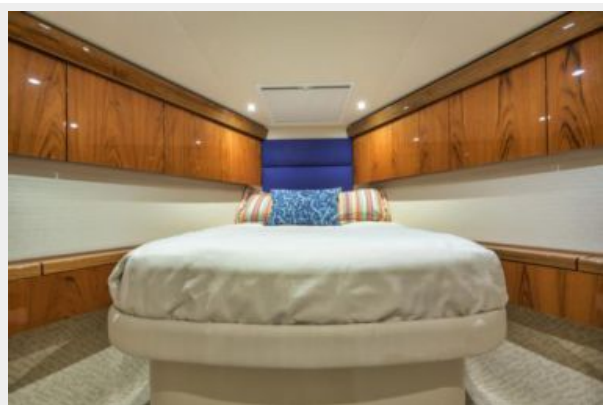
Отказ от ответственности

Компания предоставляет описание судна или яхты добросовестно, но не может гарантировать точность этой информации, а также не ручается за техническое состояние. Покупатель должен проинструктировать своих агентов или оценщиков исследовать представленную информацию более подробно, по собственному желанию. Продажа судна или яхты, изменение цены или снятие с продажи будет происходить без предварительного уведомления.

ФОТОГРАФИИ

















КОНТАКТЫ

Андрей Шестаков (Andrey Shestakov) – ведущий яхтенный брокер отдела продаж яхт и судов компании Shestakov Yacht Sales Inc. Официальный представитель Shestakov Yacht Sales Inc. для русскоговорящих клиентов в центральном офисе компании в Майами/Форт Лодердейл/Флорида/США.

Контактная информация

Email: andrey@shestakovyachtsales.com

Web: shestakovyachtsales.com

Телефоны

Краснодарский край: **+7(918)465-66-44**

США, Майами, Флорида: **+1(954)274-4435**

Время работы

Понедельник – Суббота: **9:00 - 21:00**
EDT

Воскресенье: **Закрито**

Адрес



Harbour Towne Marina, 850 NE 3rd St,
STE 213, Dania, FL 33004