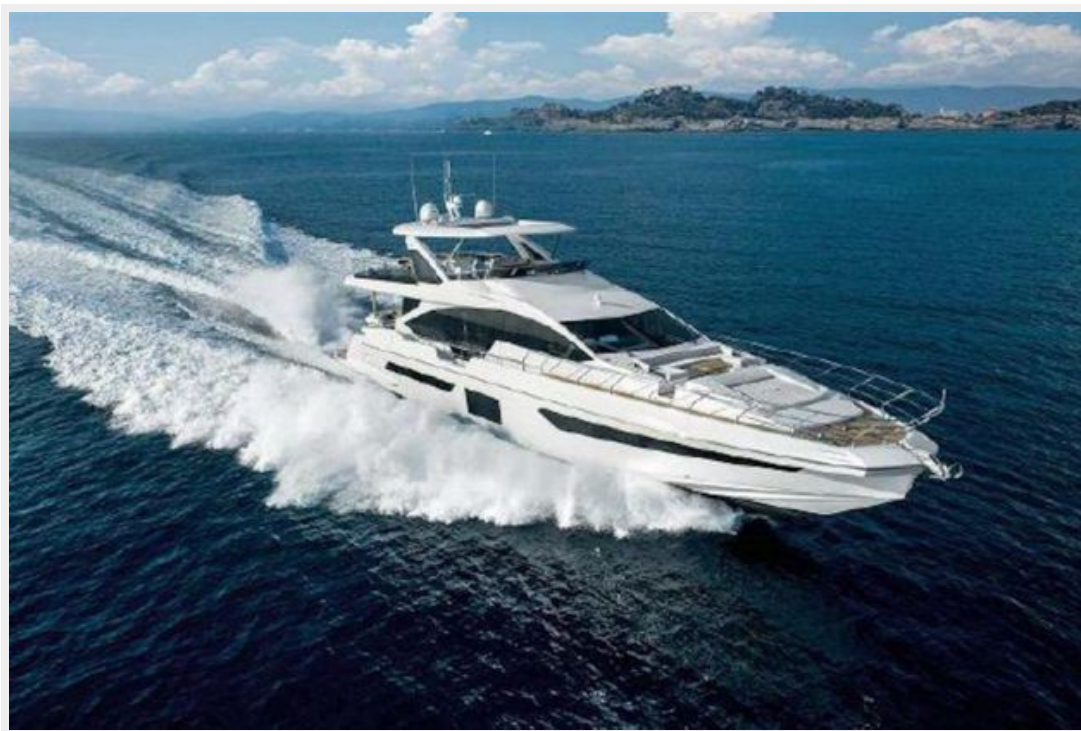


NOMAD — AZIMUT



Builder: AZIMUT

Year Built: 2021

Model: Motor Yacht

Price: PRICE ON APPLICATION

Location: Mexico

LOA: 87' 3" (26.59m)

Beam: 20' 4" (6.20m)

Max Draft: 6' 1" (1.85m)

Our experienced yacht broker, Andrey Shestakov, will help you choose and buy a yacht that best suits your needs **Nomad — AZIMUT** from our catalogue. Presently, at Shestakov Yacht Sales Inc., we have a wide variety of yachts available on our sale's list. We also work in close contact with all the big yacht manufacturers from all over the world.

If you would like to buy a yacht **Nomad — AZIMUT** or would like help answering any questions concerning purchasing, selling or chartering a yacht, please call **+1(954)274-4435**

TABLE OF CONTENTS

TABLE OF CONTENTS	2
SPECIFICATIONS	3
Overview	3
Basic Information	3
Dimensions	3
Speed, Capacities and Weight	3
Accommodations	3
Hull and Deck Information	4
Engine Information	4
DETAILED INFORMATION	5
Features	5
Exclusions	6
Disclaimer	6
PHOTOS	7
CONTACTS	11
Contact details	11
Telephones	11
Office hours	11
Address	11

SPECIFICATIONS

Overview

- American Specs 60hz
- Low Hours
- Engines Upgraded MAN 1800 HP
- Carbon-Tech Generation
- Hydraulic Swim Platform
- Crew full time kept
- Preliminary Listing, walkthrough video, and photos coming soon

Basic Information

Category: Motor Yacht

Sub Category: Flybridge

Model Year: 2021

Year Built: 2021

Country: Mexico

Fly Bridge: Yes

Cockpit: Yes

Dimensions

LOA: 87' 3" (26.59m)

Beam: 20' 4" (6.20m)

Max Draft: 6' 1" (1.85m)

Speed, Capacities and Weight

Water Capacity: 290 Gallons

Fuel Capacity: 1092 Gallons

Accommodations

Total Cabins: 4

Total Heads: 5

Hull and Deck Information

Hull Material: Fiberglass

Engine Information

Engines: 2

Manufacturer: MAN

Engine Type: Inboard

Fuel Type: Diesel

DETAILED INFORMATION

Features

Carbon Generation

The use of carbon fiber is a construction choice that allows volumes and surfaces to be increased in size while keeping the same weight, therefore maintaining excellent levels of dynamic stability. Carbon fiber lamination is applied to:

- Superstructure
- Flybridge
- Radar arch
- Hardtop (opt)
- Platform

EPS Electronic Power Steering

At the helm, the innovative Optimus Electronic Power Steering system by Seastar Solutions gives you a similar sensation to driving a top-of-the-range car. The owner can configure the responsiveness of the helm by regulating wheel turns and steering effort according to speed. The system also has the additional benefit of eliminating the hydraulic piping between the helm station and the rudder compartment.

Active Trim Control

Automatic interceptors by Humphree give the vessel the lift it needs to get up on the plane faster or reach that optimum running trim. In this way, the resistance of the hull is automatically optimized for every speed and load condition, this resulting in increased speed and lower fuel consumption. The Humphree system is all-electric powered by 12-24 Volt DC. Thanks to the design of the Interceptor, it only requires a small amount of power to move the blade up and down, even under high-speed operation.

Integrated Control Panel

The integrated control system by Raymarine has been customized to increase control potential: from engine data and alarms to bilge and water discharge pumps, tank levels, and engine room ventilation, right through to the sound system and the air conditioning units. The system can be accessed from both helm stations and remotely from a tablet.

HTS High Technical Standard Declaration

Azimut Grande 25 Metri has been designed and engineered according to the highest standards applied in the recreational industry for production boats. With CE Class A and NMMA Certification, the boat complies with the two major safety certifications.

Superior Level of Privacy

A specially designed partition with sliding doors and the option to instantly switch between transparent and frosted glass allows the crew to move freely around the helm station and galley without encroaching in any way on the absolute privacy of the owner and guests. Crew quarters, comprising mess, a cabin for the captain, and a second cabin with bunk beds, are accessed from a stairway aft of the superstructure.

Convertible Lounging Area

The bow area consists of a C-shaped sofa and a sun lounging area, a section fitted with an electrically operated system that can create a spacious and spectacular lounge area with two sofas, next to a generously-sized sun lounging pad.

Exclusions

Owner's personal belongings.

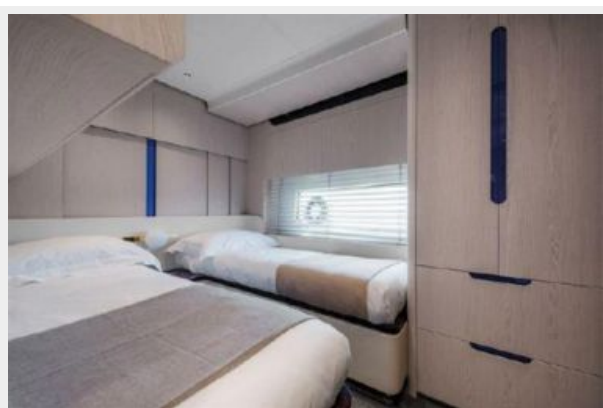
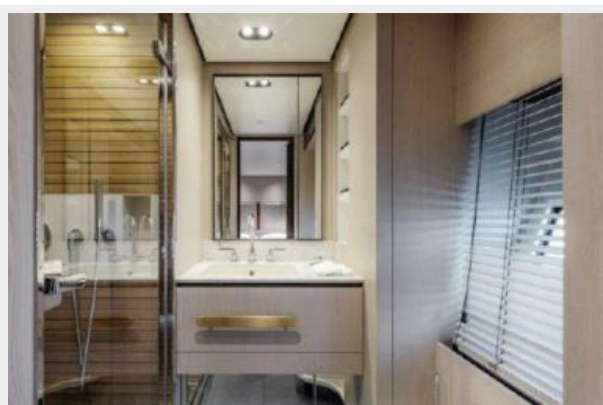
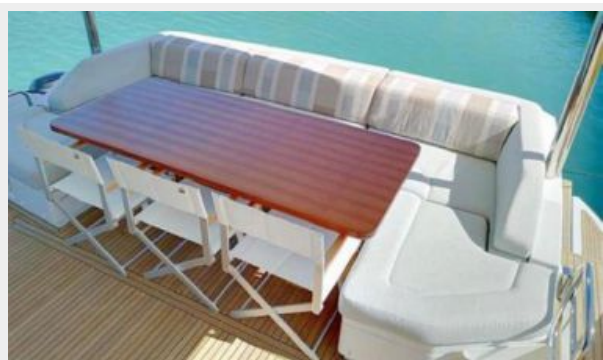
Disclaimer

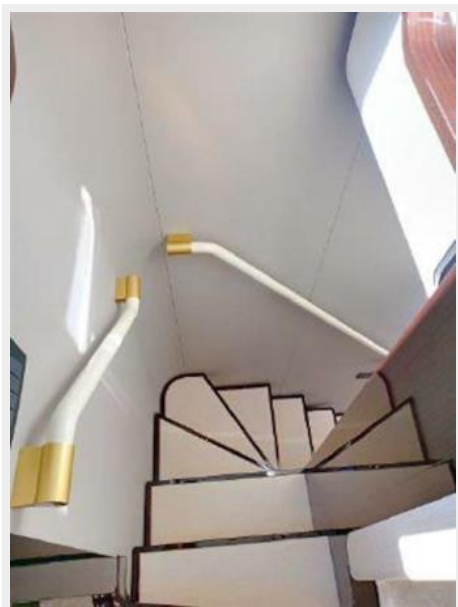
The Company offers the details of this vessel or yacht in good faith but cannot guarantee or warrant the accuracy of this information nor warrant the condition of the vessel. A buyer should instruct his representatives, agents, or his surveyors, to investigate such details as the buyer desires validated. This vessel or yacht is offered subject to prior sale, price change, or withdrawal without notice.

PHOTOS









CONTACTS

Andrey Shestakov, leading yacht broker of the sales department of Shestakov Yacht Sales Inc. Shestakov Yacht Sales Inc., the official representative of the Miami/Fort Lauderdale FL headquarters.

Contact details

Email:
andrey@shestakovyachtsales.com

Web: shestakovyachtsales.com/en/

Telephones

USA: **+1(954)274-4435**

Office hours

Monday – Saturday: **9:00 - 21:00 EDT**

Sunday: **closed**

Address



Harbour Towne Marina, 850 NE 3rd St,
STE 213, Dania, FL 33004