

## BLUE MERLE — RANGER TUGS



**Builder:** RANGER TUGS

**Year Built:** 2013

**Model:** Trawler Yacht

**Price:** PRICE ON APPLICATION

**Location:** United States

**LOA:** 27' 0" (8.23m)

**Beam:** 8' 6" (2.59m)

**Max Draft:** 2' 10" (0.86m)

**Cruise Speed:** 10 Kts. (12 MPH)

**Max Speed:** 15 Kts. (17 MPH)

Our experienced yacht broker, Andrey Shestakov, will help you choose and buy a yacht that best suits your needs **Blue Merle — RANGER TUGS** from our catalogue. Presently, at Shestakov Yacht Sales Inc., we have a wide variety of yachts available on our sale's list. We also work in close contact with all the big yacht manufacturers from all over the world.

If you would like to buy a yacht **Blue Merle — RANGER TUGS** or would like help answering any questions concerning purchasing, selling or chartering a yacht, please call **+1(954)274-4435**

# TABLE OF CONTENTS

TABLE OF CONTENTS	2
SPECIFICATIONS	5
Overview	5
Basic Information	5
Dimensions	5
Speed, Capacities and Weight	5
Accommodations	5
Hull and Deck Information	6
Engine Information	6
DETAILED INFORMATION	7
MAIN DESCRIPTION	7
ACCOMODATIONS	7
Galley	7
POWER	7
UPGRADES/OPTIONS	7
TRAILER	7
WALK THRU	8
DISCLAIMER	8
Exclusions	8
Disclaimer	8
PHOTOS	9
2	9
1	9
3	9
4	9
5	10
6	10
7	10

8	10
9	11
10	11
11	11
12	11
14	12
13	12
15	12
16	12
17	13
18	13
19	13
20	13
21	14
22	14
23	14
24	14
25	15
26	15
27	15
28	15
29	16
30	16
32	16
31	16
33	17
34	17
35	17
36	17

37	18
38	18
39	18
40	18
41	19
CONTACTS	20
Contact details	20
Telephones	20
Office hours	20
Address	20

# SPECIFICATIONS

## Overview

The Ranger Tug 27 is just the right combination for cruising and playing on the water. Large enough to enjoy on overnight adventures and small and nimble enough to pull a tube for the kids. This one comes complete with trailer and many upgrades making it the perfect option for your next boat. She is currently in a covered slip in fresh water and easily seen 7 days a week. Copy and Paste the link below in your browser for a review on this particular model.

## Basic Information

Category: Trawler Yacht	Model Year: 2013
Year Built: 2013	Country: United States

## Dimensions

LOA: 27' 0" (8.23m)	Beam: 8' 6" (2.59m)
Max Draft: 2' 10" (0.86m)	Clearance: 11' 0" (3.35m)

## Speed, Capacities and Weight

Cruise Speed: 10 Kts. (12 MPH)	Max Speed: 15 Kts. (17 MPH)
Water Capacity: 40 Gallons	Holding Tank: 30 Gallons
Fuel Capacity: 100 Gallons	

## Accommodations

Total Cabins: 2	Total Berths: 3
Total Heads: 1	

---

## Hull and Deck Information

---

**Hull Material:** Fiberglass

## Engine Information

---

**Engines:** 1

**Manufacturer:** Yanmar

**Model:** 4BY2-180

**Engine Type:** Inboard

**Fuel Type:** Diesel

# DETAILED INFORMATION

---

## MAIN DESCRIPTION

---

The Ranger Tug 27 is just the right combination for cruising and playing on the water. Large enough to enjoy on overnight adventures and small and nimble enough to pull a tube for the kids. This one comes complete with trailer and many upgrades making it the perfect option for your next boat. She is currently in a covered slip in fresh water and easily seen 7 days a week. Copy and Paste the link below in your browser for a review on this particular model.

## ACCOMODATIONS

---

- Forward V berth with filler cushion
- Dining Table converts into a small bed
- Guest Berth/Cabin under dinette to port.
- This space also contains a small desk and folding jump seat.

## Galley

---

Refrigerator/Freezer 3.5 cu ft Propane Stove Microwave Oven

## POWER

---

3-Bank Battery Charger 1500 Watt Inverter 30 amp shore power cord w/smart plug Adapters for 15a and 50a plugs

## UPGRADES/OPTIONS

---

Aft Canopy - Cockpit Bimini (brown sunbrella) Full Enclosure (never used) AGM Batteries x 4 (Lifeline GPL-27T, 100ah ea) 2 replaced in 2019, 2c replaced in 2020 Air Conditioning w/ reverse cycle heat Anchor Pkg - Rocha 10kg, 170 ft line and 30 ft chain rode Spare anchor- Lewmar Claw w/ 150 ft 1/2in line and 30 ft chain New Petit Bottom Paint (2020) Garmin Autopilot w/remote Garmin NavPak Garmin 5212 chartplotter Garmin 18 Radar Garmin VHF and antenna All LED lighting Macerator w/ Y valve Mase 2.7kw Genset Propane Stove, 2 five pound propane bottles in locker on swimstep Remote control spotlight Solar Panel Thruster with Remote - Bow and Stern Side Power Transom Platform Rails Ultrahyde Upholstery Cabin Step was Modified for easier engine access

## TRAILER

---

Tandem Axel Float-On Trailer Boat and Trailer together are about 9000lbs. 2 5/16 ball Goodyear Endurance Tires w/1 spare Tie down straps

---

## WALK THRU

---

As I boarded the boat through the aft transom gate I noticed the spaciousness of the cockpit first. She has a bimini that will cover this area to create more shade and even isenglass for those cooler days. In the cockpit, the floor hatches lift up to reveal the engine compartment and more storage.

As you enter the cabin you step down 2 steps to find beautiful wood floors and the head to starboard and a small office/guest berth to port. As you move forward you will encounter the galley to starboard and dinette to port. And then the helm and admirals seat. In front of the helm you step down one more time to find the forward berth.

---

## DISCLAIMER

---

The Company offers the details of this vessel in good faith but cannot guarantee or warrant the accuracy of this information nor warrant the condition of the vessel. A buyer should instruct his agents, or his surveyors, to investigate such details as the buyer desires validated. This vessel is offered subject to prior sale, price change, or withdrawal without notice.

---

## Exclusions

---

Owner's personal belongings.

---

## Disclaimer

---

The Company offers the details of this vessel or yacht in good faith but cannot guarantee or warrant the accuracy of this information nor warrant the condition of the vessel. A buyer should instruct his representatives, agents, or his surveyors, to investigate such details as the buyer desires validated. This vessel or yacht is offered subject to prior sale, price change, or withdrawal without notice.



# PHOTOS

1



2



3



4



5



6



7



8



9



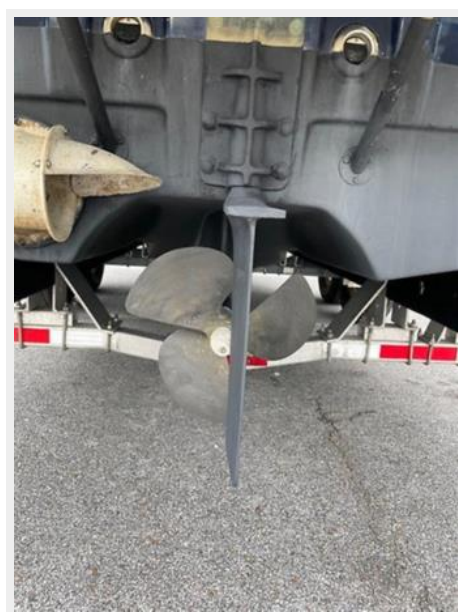
10



11



12





13



14



15



16



17



18



19



20



21



22



23



24





25



26



27



28



29



30



31



32





33



34



35



36



37



38



39



40



41



# CONTACTS

---

Andrey Shestakov, leading yacht broker of the sales department of Shestakov Yacht Sales Inc. Shestakov Yacht Sales Inc., the official representative of the Miami/Fort Lauderdale FL headquarters.

## Contact details

---

Email: **andrey@shestakovyachtsales.com**

Web: [shestakovyachtsales.com/en/](http://shestakovyachtsales.com/en/)

## Telephones

---

USA: **+1(954)274-4435**

## Office hours

---

Monday – Saturday: **9:00 - 21:00 EDT**

Sunday: **closed**

## Address

---



Harbour Towne Marina, 850 NE 3rd St,  
STE 213, Dania, FL 33004