

## PARTNER — AZIMUT



**Builder:** [AZIMUT](#)

**Year Built:** 2018

**Model:** Mega Yacht

**Price:** PRICE ON APPLICATION

**Location:** Italy

**LOA:** 115' 0" (35.05m)

**Beam:** 24' 7" (7.49m)

**Min Draft:** 6' 3" (1.91m)

**Cruise Speed:** 21 Kts. (24 MPH)

**Max Speed:** 25 Kts. (29 MPH)

Our experienced yacht broker, Andrey Shestakov, will help you choose and buy a yacht that best suits your needs **PARTNER — AZIMUT** from our catalogue. Presently, at Shestakov Yacht Sales Inc., we have a wide variety of yachts available on our sale's list. We also work in close contact with all the big yacht manufacturers from all over the world.

If you would like to buy a yacht **PARTNER — AZIMUT** or would like help answering any questions concerning purchasing, selling or chartering a yacht, please call **+1(954)274-4435**

# TABLE OF CONTENTS

TABLE OF CONTENTS	2
SPECIFICATIONS	6
Overview	6
Basic Information	6
Dimensions	6
Speed, Capacities and Weight	6
Accommodations	7
Hull and Deck Information	7
Engine Information	7
DETAILED INFORMATION	8
Azimut 35m Grande Highlights	8
Navigation Equipment	8
Technical Information	8
Additional Information	9
Entertainment	9
Galley and Appliances	9
Exclusions	9
Disclaimer	10
PHOTOS	11
Salon	11
Salon	11
Aft Deck Seating	11
Beach Club	11
Bridge Deck Bar and Dining	11
Bridge Deck Seating	11
Bar	12
Bridge Deck	12
Dining	12

Retractable Top	12
Bridge Helm	12
Bar	12
Salon	13
Primary Head	13
Primary Stateroom	13
Primary Head	13
Primary Stateroom	13
Helm	13
Helm	14
Stairs to Staterooms	14
Galley	14
Galley	14
Galley	14
Salon	14
Salon	15
Main Dining	15
Stateroom	15
Head	15
Stateroom	15
Head	15
Stateroom	16
Head	16
Stateroom	16
Head	16
Vanity	16
Foyer	16
Head	17
Salon	17

---

Aft Deck	17
Aft Deck	17
Tri Deck	17
Beach Club	17
Bridge Deck	18
Bridge Furniture	18
Bridge Deck	18
Bridge Deck	18
Bridge Dining	18
Foredeck	18
Salon	19
Jacuzzi	19
Salon	19
Foredeck Seating/Dining	19
Head	19
Primary Stateroom	19
Main Dining	20
Head	20
Lighting	20
Dining	20
Helm	20
Helm	20
Tender Garage	21
Engine Room	21
Crew	21
Engine Room	21
Galley	21
Salon	21
Equipment Room	22

---

---

Salon	22
Dining	22
Stateroom	22
Head	22
Refrigeration	22
General Arrangement	23
CONTACTS	24
Contact details	24
Telephones	24
Office hours	24
Address	24

---

# SPECIFICATIONS

---

## Overview

---

### 2018 Azimut 35M Grande

- **US Spec with ASEA Converter**
- **611 Hours on MTU 16V 2000 M93**
- **Side Garage for 5 Meter Tender**
- **CMC Electric Fin Stabilizers**
- **Foredeck Jacuzzi with Sun Loungers and Dining**
- **5 Staterooms Plus Crew**
- **Beach Club**

Vessel is currently located in Isola D' Elba, Italy (Tuscany)

## Basic Information

---

**Category:** Mega Yacht

**Model Year:** 2018

**Year Built:** 2018

**Country:** Italy

## Dimensions

---

**LOA:** 115' 0" (35.05m)

**Beam:** 24' 7" (7.49m)

**Min Draft:** 6' 3" (1.91m)

## Speed, Capacities and Weight

---

**Cruise Speed:** 21 Kts. (24 MPH)

**Max Speed:** 25 Kts. (29 MPH)

**Displacement:** 339511.88348 Pounds

**Water Capacity:** 792 Gallons

**Holding Tank:** 660 Gallons

**Fuel Capacity:** 4775 Gallons

---

## Accommodations

---

**Total Cabins:** 5

**Total Berths:** 10

**Sleeps:** 10

**Total Heads:** 6

**Crew Cabin:** 4

**Crew Berths:** 6

**Crew Sleeps:** 6

**Crew Heads:** 4

---

## Hull and Deck Information

---

**Hull Material:** GRP

**Deck Material:** Teak

**Exterior Designer:** Stefano Righini

**Interior Designer:** Achille Salvagni

---

## Engine Information

---

**Engines:** 2

**Manufacturer:** MTU

**Model:** 16V 2000 M93

**Engine Type:** Inboard

**Fuel Type:** Diesel

---

# DETAILED INFORMATION

---

## Azimut 35m Grande Highlights

---

### 2018 Azimut 35M Grande

- US Spec with ASEA Converter
- 611 Hours on MTU 16V 2000 M93
- Side Garage for 5 Meter Tender
- CMC Electric Fin Stabilizers
- Foredeck Jacuzzi with Sun Loungers and Dining
- 5 Staterooms Plus Crew
- Beach Club

Vessel is currently located in Isola D' Elba, Italy (Tuscany)

## Navigation Equipment

---

- Autopilot
- Compass
- Depth Sounder
- Display + additional touchscreen in crew cabin
- Electronic engine control
- Odometer
- Radar Antenna
- Rudder angle indicator
- VHF Radio

## Technical Information

---

- Anchor 115 kg
- Automatic Bilge Pump
- Bilge Alarm
- Bow Thruster
- Bow Winches
- Courtesy Lights
- Directional Spotlight
- Engine Alarm
- Fire Extinguishing System
- Gangway telescopic
- Hard top
- Platform pivoting



- Stabilizers electric CMC
- Stern Winches
- Teak Deckhouse
- Teak Cockpit
- Teak Side Decks
- 7 Underwater lights- Lumishore TIX802 SUPRA

---

## Additional Information

---

- Air Conditioning
- BBQ/Grill on fly
- Electric Toilet
- 5 Video Cameras- fixed cameras on aft fly,1 cockpit,1 pivoting/zooming in engine room,1 on sundeck
- Watermaker 180l/h Idromar
- Double Racor filters for generators
- Additional Soundproof Insulation between engine room and salon
- Oil change system for engines, gearboxes and generators
- Additional Midship cleats
- Frequency converter
- Glendenning Cable master
- Pullman bunk in Starboard guest cabin
- 3 mini Ipad for AV system

---

## Entertainment

---

- Radio AM/FM
- Satellite TV antenna SAT COM KVH V7
- TV Ready Video Gold Package

---

## Galley and Appliances

---

- Ceramic hot plate
- Deck Refrigerator and freezer
- Dishwasher
- Ice Maker beach area
- 2 Microwave Oven combo, pantry and crew
- 2 Refrigerator galley and master

---

## Exclusions

---

Owner's personal belongings.

## Disclaimer

---

The Company offers the details of this vessel or yacht in good faith but cannot guarantee or warrant the accuracy of this information nor warrant the condition of the vessel. A buyer should instruct his representatives, agents, or his surveyors, to investigate such details as the buyer desires validated. This vessel or yacht is offered subject to prior sale, price change, or withdrawal without notice.

# PHOTOS

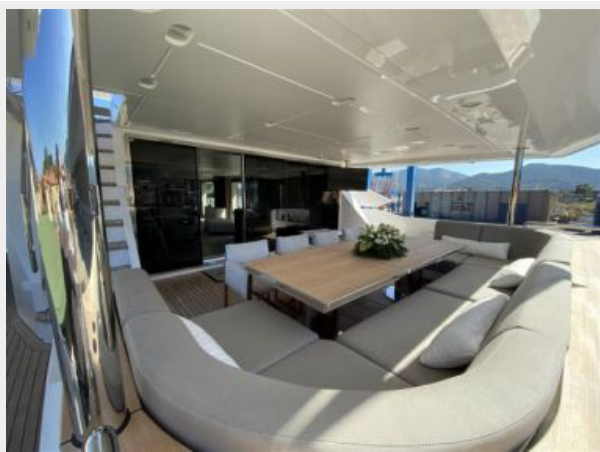
**Salon**



**Salon**



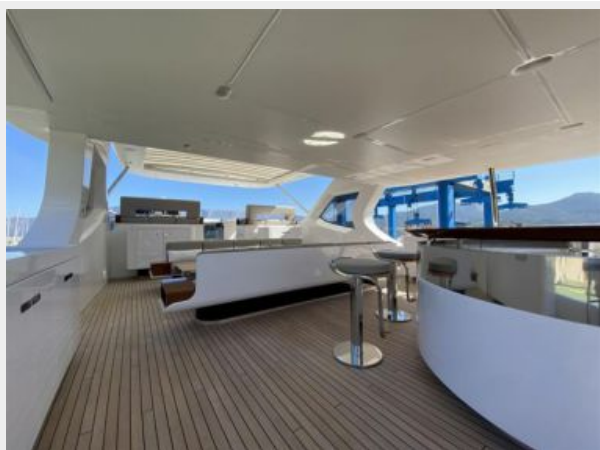
**Aft Deck Seating**



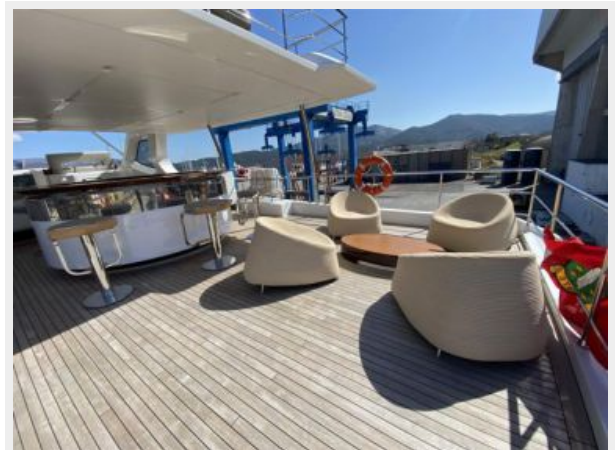
**Beach Club**



**Bridge Deck Bar and Dining**



**Bridge Deck Seating**



**Bar**



**Bridge Deck**



**Dining**



**Retractable Top**



**Bridge Helm**



**Bar**





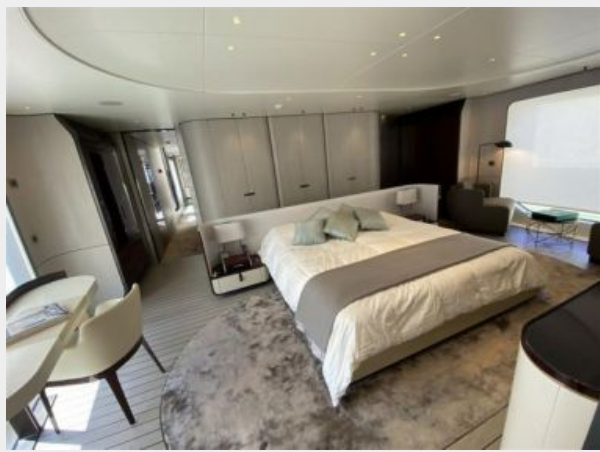
Salon



Primary Head



Primary Stateroom



Primary Head



Primary Stateroom



Helm



**Helm**



**Stairs to Staterooms**



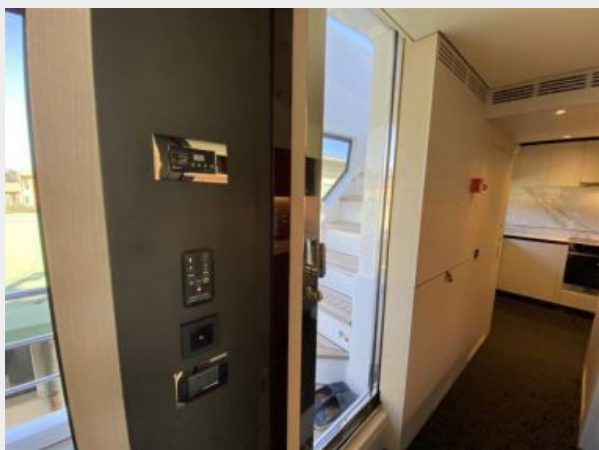
**Galley**



**Galley**



**Galley**



**Salon**





Salon



Main Dining



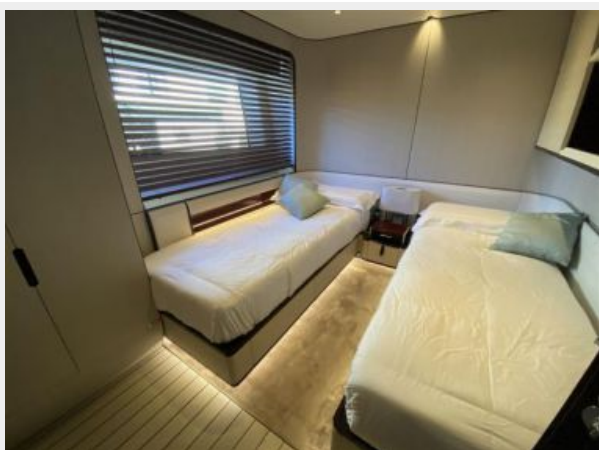
Stateroom



Head



Stateroom



Head



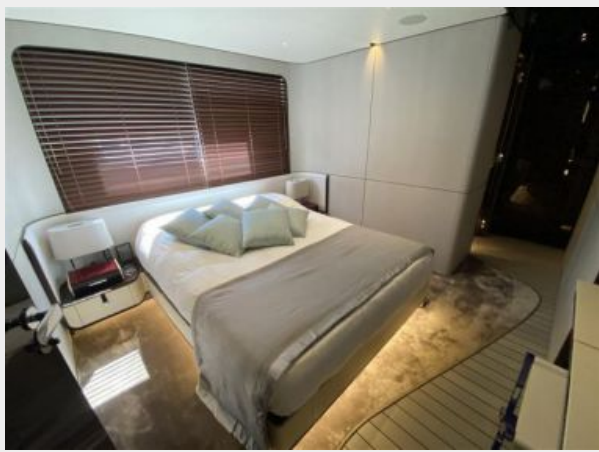
**Stateroom**



**Head**



**Stateroom**



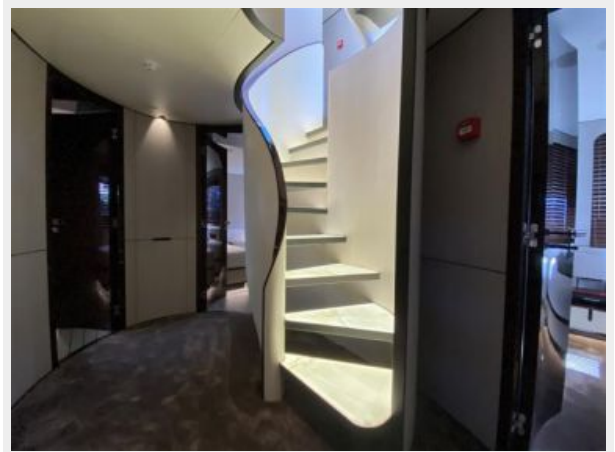
**Head**



**Vanity**



**Foyer**





**Head**



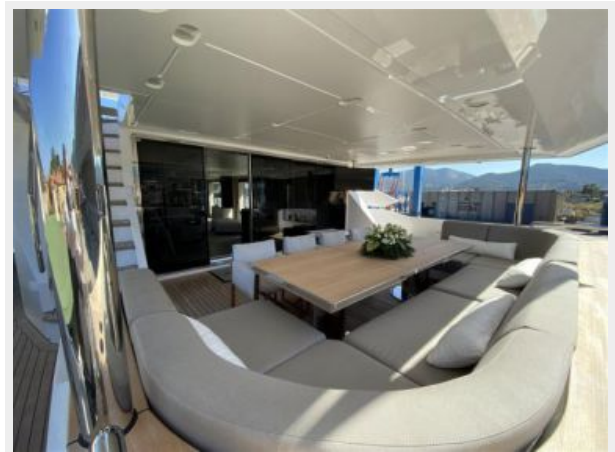
**Salon**



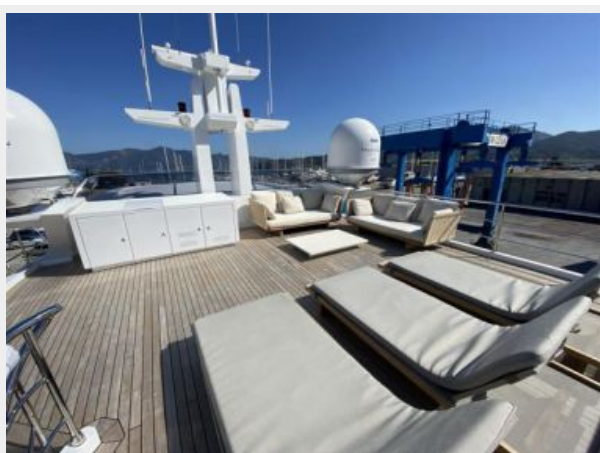
**Aft Deck**



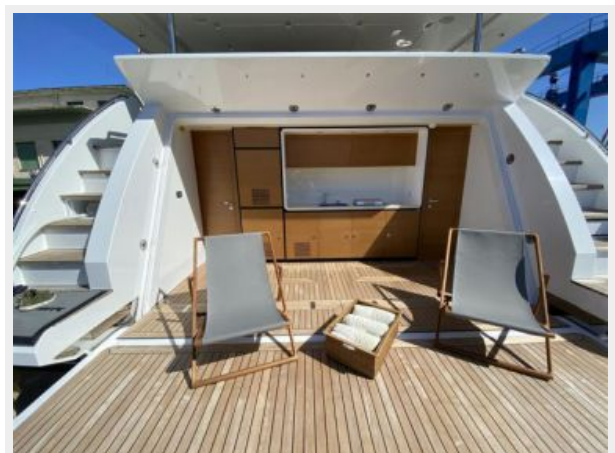
**Aft Deck**



**Tri Deck**



**Beach Club**



**Bridge Deck**



**Bridge Furniture**



**Bridge Deck**



**Bridge Deck**



**Bridge Dining**



**Foredeck**





**Salon**



**Jacuzzi**



**Salon**



**Foredeck Seating/Dining**



**Head**



**Primary Stateroom**



**Main Dining**



**Head**



**Lighting**



**Dining**



**Helm**



**Helm**





**Tender Garage**



**Engine Room**



**Crew**



**Engine Room**



**Galley**



**Salon**



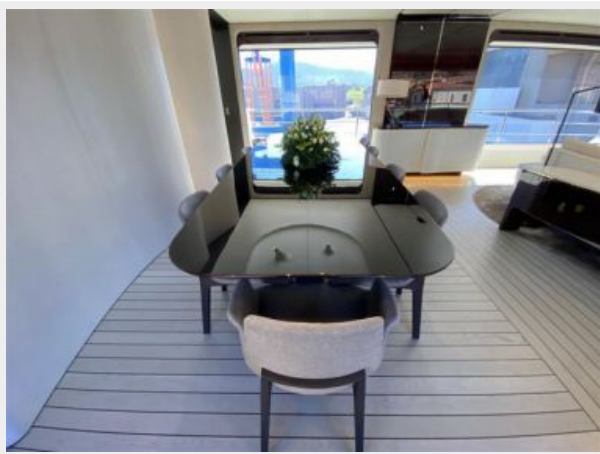
**Equipment Room**



**Salon**



**Dining**



**Stateroom**



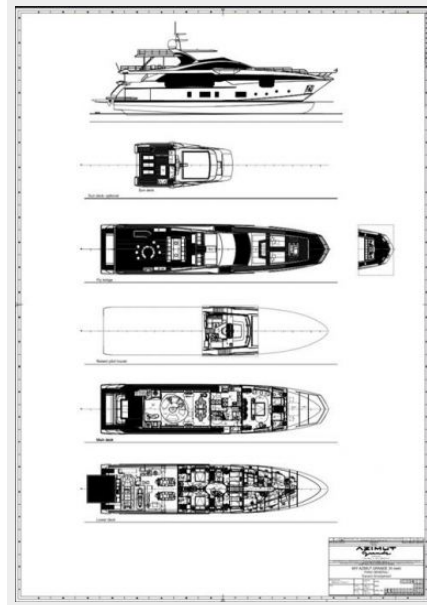
**Head**



**Refrigeration**



## General Arrangement



# CONTACTS

---

Andrey Shestakov, leading yacht broker of the sales department of Shestakov Yacht Sales Inc. Shestakov Yacht Sales Inc., the official representative of the Miami/Fort Lauderdale FL headquarters.

## Contact details

---

Email: [andrey@shestakovyachtsales.com](mailto:andrey@shestakovyachtsales.com)

Web: [shestakovyachtsales.com/en/](http://shestakovyachtsales.com/en/)

## Telephones

---

USA: +1(954)274-4435

## Office hours

---

Monday – Saturday: **9:00 - 21:00** EDT

Sunday: **closed**

## Address

---



Harbour Towne Marina, 850 NE 3rd St,  
STE 213, Dania, FL 33004