

GOLDRUSH — VIKING



Судостроитель: VIKING

Год постройки: 1998

Модель: Sport Yacht

Цена: **ЦЕНА ЯХТЫ ПО ЗАПРОСУ**

Местонахождение: United States

Длина общая: 55' 0" (16.76m)

Ширина: 17' 3" (5.26m)

Макс. осадка: 4' 8" (1.42m)

Крейс. скорость: 30 Kts. (35 MPH)

Макс. скорость: 35 Kts. (40 MPH)

Купить **Goldrush — VIKING** а также выбрать подходящую вам яхту из нашего каталога яхт вам поможет опытный яхтенный брокер Андрей Шестаков. На сегодняшний день компания **Shestakov Yacht Sales Inc.** имеет большое количество яхт в собственном списке продаж, а также тесно сотрудничает со всеми крупными яхтенными производителями по всему миру.

Для того чтобы купить яхту **Goldrush — VIKING** а также проконсультироваться по любому вопросу связанному с покупкой, продажей, чартером яхт позвоните по телефону **+7(918)465-66-44**.

ОГЛАВЛЕНИЕ

ОГЛАВЛЕНИЕ	2
ХАРАКТЕРИСТИКИ	6
Обзор	6
Основная информация	6
Размеры	6
Скорость, вместимость и масса	6
Размещение	7
Корпус и палуба	7
Информация о двигателе	7
ПОДРОБНОЕ ОПИСАНИЕ	8
Vessel Walkthrough	8
Main Salon	8
Galley	8
Master Stateroom	9
Forward VIP Stateroom	9
Mid-Ship Guest Stateroom	9
Guest Head	10
Deck	10
Electronics and Helm	10
Electrical	11
Engine Details and Mechanical Equipment	11
Disclaimer	11
Исключения	12
Отказ от ответственности	12
ФОТОГРАФИИ	13
3_1998 55ft Viking 55 Convertible GOLDRUSH	13
2_1998 55ft Viking 55 Convertible GOLDRUSH	13
4_1998 55ft Viking 55 Convertible GOLDRUSH	13

5_1998 55ft Viking 55 Convertible GOLDRUSH	13
6_1998 55ft Viking 55 Convertible GOLDRUSH	14
7_1998 55ft Viking 55 Convertible GOLDRUSH	14
8_1998 55ft Viking 55 Convertible GOLDRUSH	14
9_1998 55ft Viking 55 Convertible GOLDRUSH	14
10_1998 55ft Viking 55 Convertible GOLDRUSH	14
11_1998 55ft Viking 55 Convertible GOLDRUSH	14
12_1998 55ft Viking 55 Convertible GOLDRUSH	15
13_1998 55ft Viking 55 Convertible GOLDRUSH	15
14_1998 55ft Viking 55 Convertible GOLDRUSH	15
15_1998 55ft Viking 55 Convertible GOLDRUSH	15
16_1998 55ft Viking 55 Convertible GOLDRUSH	15
17_1998 55ft Viking 55 Convertible GOLDRUSH	15
18_1998 55ft Viking 55 Convertible GOLDRUSH	16
19_1998 55ft Viking 55 Convertible GOLDRUSH	16
20_1998 55ft Viking 55 Convertible GOLDRUSH	16
21_1998 55ft Viking 55 Convertible GOLDRUSH	16
22_1998 55ft Viking 55 Convertible GOLDRUSH	16
23_1998 55ft Viking 55 Convertible GOLDRUSH	16
25_1998 55ft Viking 55 Convertible GOLDRUSH	17
24_1998 55ft Viking 55 Convertible GOLDRUSH	17
26_1998 55ft Viking 55 Convertible GOLDRUSH	17
27_1998 55ft Viking 55 Convertible GOLDRUSH	17
28_1998 55ft Viking 55 Convertible GOLDRUSH	17
29_1998 55ft Viking 55 Convertible GOLDRUSH	17
30_1998 55ft Viking 55 Convertible GOLDRUSH	18
31_1998 55ft Viking 55 Convertible GOLDRUSH	18
33_1998 55ft Viking 55 Convertible GOLDRUSH	18
32_1998 55ft Viking 55 Convertible GOLDRUSH	18

34_1998 55ft Viking 55 Convertible GOLDRUSH	19
35_1998 55ft Viking 55 Convertible GOLDRUSH	19
36_1998 55ft Viking 55 Convertible GOLDRUSH	19
37_1998 55ft Viking 55 Convertible GOLDRUSH	19
38_1998 55ft Viking 55 Convertible GOLDRUSH	20
39_1998 55ft Viking 55 Convertible GOLDRUSH	20
41_1998 55ft Viking 55 Convertible GOLDRUSH	20
40_1998 55ft Viking 55 Convertible GOLDRUSH	20
42_1998 55ft Viking 55 Convertible GOLDRUSH	20
43_1998 55ft Viking 55 Convertible GOLDRUSH	20
44_1998 55ft Viking 55 Convertible GOLDRUSH	21
45_1998 55ft Viking 55 Convertible GOLDRUSH	21
47_1998 55ft Viking 55 Convertible GOLDRUSH	21
46_1998 55ft Viking 55 Convertible GOLDRUSH	21
48_1998 55ft Viking 55 Convertible GOLDRUSH	22
49_1998 55ft Viking 55 Convertible GOLDRUSH	22
50_1998 55ft Viking 55 Convertible GOLDRUSH	22
51_1998 55ft Viking 55 Convertible GOLDRUSH	22
52_1998 55ft Viking 55 Convertible GOLDRUSH	23
53_1998 55ft Viking 55 Convertible GOLDRUSH	23
54_1998 55ft Viking 55 Convertible GOLDRUSH	23
55_1998 55ft Viking 55 Convertible GOLDRUSH	23
56_1998 55ft Viking 55 Convertible GOLDRUSH	24
57_1998 55ft Viking 55 Convertible GOLDRUSH	24
59_1998 55ft Viking 55 Convertible GOLDRUSH	24
58_1998 55ft Viking 55 Convertible GOLDRUSH	24
60_1998 55ft Viking 55 Convertible GOLDRUSH	25
61_1998 55ft Viking 55 Convertible GOLDRUSH	25
62_1998 55ft Viking 55 Convertible GOLDRUSH	25

63_1998 55ft Viking 55 Convertible GOLDRUSH	25
64_1998 55ft Viking 55 Convertible GOLDRUSH	25
65_1998 55ft Viking 55 Convertible GOLDRUSH	25
66_1998 55ft Viking 55 Convertible GOLDRUSH	26
67_1998 55ft Viking 55 Convertible GOLDRUSH	26
68_1998 55ft Viking 55 Convertible GOLDRUSH	26
69_1998 55ft Viking 55 Convertible GOLDRUSH	26
70_1998 55ft Viking 55 Convertible GOLDRUSH	26
71_1998 55ft Viking 55 Convertible GOLDRUSH	26
КОНТАКТЫ	27
Контактная информация	27
Телефоны	27
Время работы	27
Адрес	27

ХАРАКТЕРИСТИКИ

Обзор

ON DISPLAY AT THE 2021 PALM BEACH INT'L BOAT SHOW

IW DOCKS, BETWEEN RAMPS 6 to 8

***** Preliminary Listing *****

Offers Encouraged

This 55 Viking has been continuously up-dated since current owners purchased it. "Goldrush" was painted in 2020, new Garmin Electronics, new carpet , new counter-top, new cook-top, new soft goods in all stateroom, new canvas, new cushions, just to name a few things.

Основная информация

Тип судна: Sport Yacht

Подкатегория: Convertible

Модельный год: 1998

Год постройки: 1998

Страна: United States

Размеры

Длина общая: 55' 0" (16.76m)

Ширина: 17' 3" (5.26m)

Макс. осадка: 4' 8" (1.42m)

Скорость, вместимость и масса

Крейс. скорость: 30 Kts. (35 MPH)

Макс. скорость: 35 Kts. (40 MPH)

Вместимость воды: 250 Gallons

Объем топливного бака: 1250 Gallons

Размещение

Всего кают: 3

Всего ком. состава: 2

Корпус и палуба

Материал корпуса: Fiberglass

Информация о двигателе

Двигатели: 2

Производитель: MAN

Тип двигателя: Inboard

Тип топлива: Diesel

ПОДРОБНОЕ ОПИСАНИЕ

Vessel Walkthrough

From the large cockpit, you enter the salon with an “L” shaped sofa to port, and high gloss furniture cabinetry to starboard, housing an electric panel, and entertainment center. The large dinette faces the galley to port, complete with appliances, New countertops, and sea rails.

Down the centerline companionway, the washer/dryer to starboard, and the guest double bunk stateroom, and head. To port you find the master, with private head, and large shower complimenting the dressing area. Continue forward to the VIP guest stateroom queen center island berth. The shared second head is accessed through a private entrance. There is a feel of quiet sophistication though the entire yacht.

Main Salon

- New carpet and canvas runners(2020)
- Hi gloss teak cabinetry
- Teak cocktail table
- Bose surround sound stereo system
- Yamaha receiver
- DVD player and recorder
- Direct TV Satellite
- 4 Location Stereo Speakers
- NEW Flat Screen TV
- L-shaped ultra leather sofa with storage
- L-shaped dinette, with teak table
- Custom Shelving, magazine rack
- Reverse cycle air conditioner, and controls
- Silhouette Blinds
- Recessed lighting, and dimmer switches

Galley

- Kenmore washer/dryer
- Custom teak trash can
- NEW cook top (2020)
- Sharp microwave/convection
- Storage by washer/dryer
- Under counter refrigeration (3 units) - 2 doors and 2 drawers (all Sub-Zero)
- Teak and holly flooring

- Custom counter storage cabinet
- Instant hot water

Master Stateroom

- Teak Cabinetry
- New carpet (2020)
- Custom Wall paper
- NEW Flat Screen TV (2020)
- Stereo Speakers
- Queen Berth, with under storage
- Cedar lined lockers
- AC/Heat, and controls
- Full mirrored area
- Credenza
- Drawer Storage
- Replaced deck hatch
- All NEW Soft Goods (2020)

Forward VIP Stateroom

- Queen centerline berth
- Under berth storage
- Custom wall paper
- NEW carpet (2020)
- High gloss teak furniture
- NEW Flat Screen TV (2020)
- Cedar lined hanging locker
- Night Stand
- AC/Heat with controls
- Stereo speakers
- NEW Soft Goods (2020)

Mid-Ship Guest Stateroom

- NEW Carpeting (2020)
- NEW Soft Goods (2020)
- Oversize, upper, lower bunks
- AC/heat, with controls
- Cedar lined hang locker
- Speakers

Guest Head

- Custom Wallpaper
- Corian Counter Tops
- Teak and Holly Flooring
- Brass Hardware
- Furniture Grade Teak Cabinetry
- Walk in Full Stall Shower
- Mirrored Ceiling
- Exhaust Fan
- Sealand Vacu-Flush Heads

Deck

- Engine room door lock
- Hull cockpit sun cover
- Fishbox macerator
- Insulated drink box
- Custom swim ladder with handles
- Electric outlets for deep drop
- Misters
- Teak cover boards
- Extra rod holders
- Custom launch rod holders and safety grab rails
- Livewell in cockpit sole
- Gaff storage on port and starboard sides of cockpit
- Bluewater fighting chair with rocket launcher
- Bait freezer with dual control thermostat; tackle center with sink
- Fortress anchor with 300' of chain and S/L windlass
- Vinyl gold leaf highlight stripe above boot stripe
- Bow pulpit

Electronics and Helm

- Murray Brothers custom teak/fiberglass helm chairs and pedestals with cushions and covers - Refinished 2020
- Sport pod controls with custom gauge package
- 7 Rod holders
- Teaser reels
- Cushions replaced
- Insulated wet/sink
- Triple spreader Rupp riggers

- NEW Three sided enclosure (2020)
- Safety grab rails
- Rod storage racks
- Custom 2000 watt stereo w/ new speakers, amplifiers, and sub-woofer 2012
- ARC remote spotlight
- AM/FM CD player XM radio
- Logitech - control for audio and video
- Recessed electronics boxes w/ black background - 2013
- Custom pod; Mather's custom wheel
- Mathers single lever electronic controls
- Mathers trolling valves
- SEA 156 VHF (2 units)
- All NEW Garmin Electronics Package w/ 16" Screens (2020)
- Robertson AP 300X

Electrical

- 20 KW ONAN Generator,
- 24V DC Ship Service
- 24V & 12V Power Supply to Bridge
- Anchor Light
- Navigation Lights
- Batteries
- Battery Chargers w/Thermal Cutoffs
- Battery Parallel Switch
- Bonding System

Engine Details and Mechanical Equipment

- MAN engine chrome package - Twin 1200 HP
- Dual Racor fuel filters for each engine
- Eskimo ice machine - New 2010
- Extra mid-bilge pump
- Awlgrip engine room and lazarette
- Fuel system primer pumps
- Oil changing system
- Voltage stabilizer transformers

Disclaimer

The Company offers the details of this vessel in good faith but cannot guarantee or warrant the

accuracy of this information nor warrant the condition of the vessel. A buyer should instruct his agents, or his surveyors, to investigate such details as the buyer desires validated. This vessel is offered subject to prior sale, price change, or withdrawal without notice.

Исключения

При продаже яхты исключаются личные вещи владельца.

Отказ от ответственности

Компания предоставляет описание судна или яхты добросовестно, но не может гарантировать точность этой информации, а также не ручается за техническое состояние. Покупатель должен проинструктировать своих агентов или оценщиков исследовать представленную информацию более подробно, по собственному желанию. Продажа судна или яхты, изменение цены или снятие с продажи будет происходить без предварительного уведомления.

ФОТОГРАФИИ

**2_1998 55ft Viking 55 Convertible
GOLDRUSH**



**3_1998 55ft Viking 55 Convertible
GOLDRUSH**



**4_1998 55ft Viking 55 Convertible
GOLDRUSH**



**5_1998 55ft Viking 55 Convertible
GOLDRUSH**



**6_1998 55ft Viking 55 Convertible
GOLDRUSH**



**7_1998 55ft Viking 55 Convertible
GOLDRUSH**



**8_1998 55ft Viking 55 Convertible
GOLDRUSH**



**9_1998 55ft Viking 55 Convertible
GOLDRUSH**



**10_1998 55ft Viking 55 Convertible
GOLDRUSH**



**11_1998 55ft Viking 55 Convertible
GOLDRUSH**



**12_1998 55ft Viking 55 Convertible
GOLDRUSH**



**13_1998 55ft Viking 55 Convertible
GOLDRUSH**



**14_1998 55ft Viking 55 Convertible
GOLDRUSH**



**15_1998 55ft Viking 55 Convertible
GOLDRUSH**



**16_1998 55ft Viking 55 Convertible
GOLDRUSH**



**17_1998 55ft Viking 55 Convertible
GOLDRUSH**



**18_1998 55ft Viking 55 Convertible
GOLDRUSH**



**19_1998 55ft Viking 55 Convertible
GOLDRUSH**



**20_1998 55ft Viking 55 Convertible
GOLDRUSH**



**21_1998 55ft Viking 55 Convertible
GOLDRUSH**



**22_1998 55ft Viking 55 Convertible
GOLDRUSH**



**23_1998 55ft Viking 55 Convertible
GOLDRUSH**



**24_1998 55ft Viking 55 Convertible
GOLDRUSH**



**25_1998 55ft Viking 55 Convertible
GOLDRUSH**



**26_1998 55ft Viking 55 Convertible
GOLDRUSH**



**27_1998 55ft Viking 55 Convertible
GOLDRUSH**



**28_1998 55ft Viking 55 Convertible
GOLDRUSH**



**29_1998 55ft Viking 55 Convertible
GOLDRUSH**



**30_1998 55ft Viking 55 Convertible
GOLDRUSH**



**31_1998 55ft Viking 55 Convertible
GOLDRUSH**



**33_1998 55ft Viking 55 Convertible
GOLDRUSH**

**32_1998 55ft Viking 55 Convertible
GOLDRUSH**



**34_1998 55ft Viking 55 Convertible
GOLDRUSH**



**35_1998 55ft Viking 55 Convertible
GOLDRUSH**



**36_1998 55ft Viking 55 Convertible
GOLDRUSH**



**37_1998 55ft Viking 55 Convertible
GOLDRUSH**



**38_1998 55ft Viking 55 Convertible
GOLDRUSH**

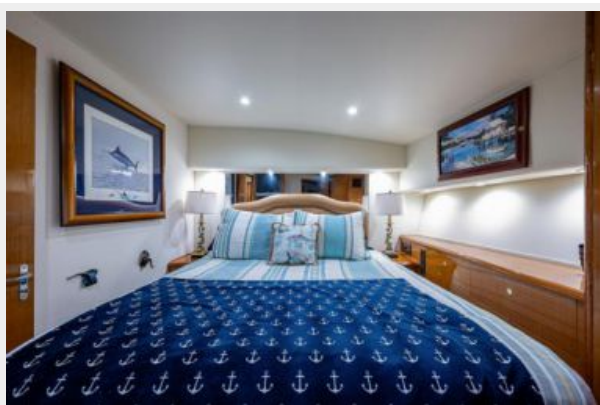


**39_1998 55ft Viking 55 Convertible
GOLDRUSH**



**41_1998 55ft Viking 55 Convertible
GOLDRUSH**

**40_1998 55ft Viking 55 Convertible
GOLDRUSH**



**42_1998 55ft Viking 55 Convertible
GOLDRUSH**



**43_1998 55ft Viking 55 Convertible
GOLDRUSH**



**44_1998 55ft Viking 55 Convertible
GOLDRUSH**

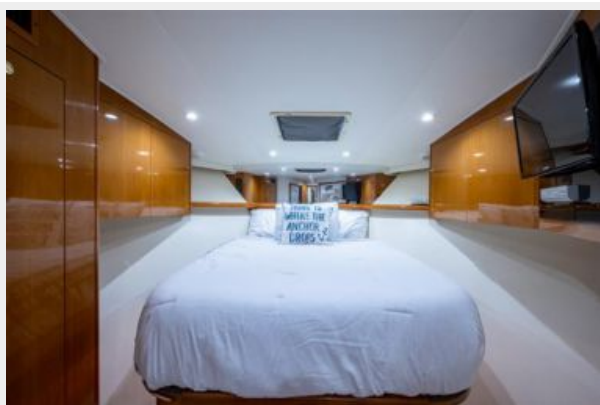


**45_1998 55ft Viking 55 Convertible
GOLDRUSH**



**47_1998 55ft Viking 55 Convertible
GOLDRUSH**

**46_1998 55ft Viking 55 Convertible
GOLDRUSH**



**48_1998 55ft Viking 55 Convertible
GOLDRUSH**



**49_1998 55ft Viking 55 Convertible
GOLDRUSH**



**50_1998 55ft Viking 55 Convertible
GOLDRUSH**



**51_1998 55ft Viking 55 Convertible
GOLDRUSH**



**52_1998 55ft Viking 55 Convertible
GOLDRUSH**



**53_1998 55ft Viking 55 Convertible
GOLDRUSH**



**54_1998 55ft Viking 55 Convertible
GOLDRUSH**



**55_1998 55ft Viking 55 Convertible
GOLDRUSH**



**56_1998 55ft Viking 55 Convertible
GOLDRUSH**



**57_1998 55ft Viking 55 Convertible
GOLDRUSH**



**59_1998 55ft Viking 55 Convertible
GOLDRUSH**

**58_1998 55ft Viking 55 Convertible
GOLDRUSH**



**60_1998 55ft Viking 55 Convertible
GOLDRUSH**



**61_1998 55ft Viking 55 Convertible
GOLDRUSH**



**62_1998 55ft Viking 55 Convertible
GOLDRUSH**



**63_1998 55ft Viking 55 Convertible
GOLDRUSH**



**64_1998 55ft Viking 55 Convertible
GOLDRUSH**



**65_1998 55ft Viking 55 Convertible
GOLDRUSH**



**66_1998 55ft Viking 55 Convertible
GOLDRUSH**



**67_1998 55ft Viking 55 Convertible
GOLDRUSH**



**68_1998 55ft Viking 55 Convertible
GOLDRUSH**



**69_1998 55ft Viking 55 Convertible
GOLDRUSH**



**70_1998 55ft Viking 55 Convertible
GOLDRUSH**



**71_1998 55ft Viking 55 Convertible
GOLDRUSH**



КОНТАКТЫ

Андрей Шестаков (Andrey Shestakov) – ведущий яхтенный брокер отдела продаж яхт и судов компании Shestakov Yacht Sales Inc. Официальный представитель Shestakov Yacht Sales Inc. для русскоговорящих клиентов в центральном офисе компании в Майами/Форт Лодердейл/Флорида/США.

Контактная информация

Email: andrey@shestakovyachtsales.com

Web: shestakovyachtsales.com

Телефоны

Краснодарский край: **+7(918)465-66-44**

США, Майами, Флорида: **+1(954)274-4435**

Время работы

Понедельник – Суббота: **9:00 - 21:00**
EDT

Воскресенье: **Закрето**

Адрес



Harbour Towne Marina, 850 NE 3rd St,
STE 213, Dania, FL 33004