

SILVER LINING — FERRETTI YACHTS



Судостроитель: [FERRETTI YACHTS](#)

Год постройки: 2018

Модель: Моторная яхта

Цена: ЦЕНА ЯХТЫ ПО ЗАПРОСУ

Местонахождение: United States

Длина общая: 65' 0" (19.81m)

Ширина: 17' 2" (5.23m)

Макс. осадка: 4' 11" (1.50m)

Крейс. скорость: 27 Kts. (31 MPH)

Макс. скорость: 30 Kts. (35 MPH)

Купить **SILVER LINING — FERRETTI YACHTS** а также выбрать подходящую вам яхту из нашего каталога яхт вам поможет опытный яхтенный брокер Андрей Шестаков. На сегодняшний день компания **Shestakov Yacht Sales Inc.** имеет большое количество яхт в собственном списке продаж, а также тесно сотрудничает со всеми крупными яхтенными производителями по всему миру.

Для того чтобы купить яхту **SILVER LINING — FERRETTI YACHTS** а также проконсультироваться по любому вопросу связанному с покупкой, продажей, чартером яхт позвоните по телефону **+7(918)465-66-44**.

ОГЛАВЛЕНИЕ

ОГЛАВЛЕНИЕ	2
ХАРАКТЕРИСТИКИ	5
Обзор	5
Основная информация	5
Размеры	5
Скорость, вместимость и масса	5
Размещение	5
Корпус и палуба	6
Информация о двигателе	6
ПОДРОБНОЕ ОПИСАНИЕ	7
Overview	7
Salon	7
Galley	8
Aft Deck	8
Master Stateroom	9
Master Bath	9
VIP Stateroom at Bow	9
VIP Bath	10
Twin Stateroom	10
Twin Guest Bath	10
Flybridge	10
Foredeck	11
Lower Helm	11
Crew Cabin	11
Crew Head	12
Engine Room and Mechanical Equipment	12
Electronics	12
Safety and Firefighting Equipment	13

Electrical System	13
Bilge System	13
Исключения	14
Отказ от ответственности	14
ФОТОГРАФИИ	15
Salon	15
Salon	15
Salon	15
Galley	15
Galley	15
Aft Deck	15
Aft Deck Controls	16
Aft Deck	16
Master Stateroom	16
Master Stateroom	16
Master Head	16
Master Head	16
VIP Stateroom	17
VIP Stateroom	17
VIP Head	17
VIP Head	17
Guest Stateroom	17
Guest Stateroom	17
Guest Head	18
Flybridge Helm and Sun Pad	18
Flybridge Seating and Grill / Bar	18
Flybridge Bar / Grill	18
Foredeck	18
Lower Helm	18

Crew Cabin	19
Lower Helm and Breaker Panels	19
Crew Hall	19
Crew Head	19
Engine Room - Port Engine	20
Engine Room - Starboard Engine	20
Seakeeper 9 Gyro Stabilizer	20
Engine Room - Generator and Watermaker	20
Overhead Port	20
Overhead Starboard Bow	20
Silver Lining GA	21
Overhead	21
КОНТАКТЫ	22
Контактная информация	22
Телефоны	22
Время работы	22
Адрес	22

ХАРАКТЕРИСТИКИ

Обзор

SILVER LINING is truly one of the nicest Ferretti 650's available in the USA. SILVER LINING was built in 2018 to full US spec. She has had light-owner use, is in excellent condition, and has only 633 hours on the Caterpillar 1,150 hp C18s with an extended warranty. The Seakeeper 9 gyro and low center of gravity provide an impressively smooth and stable ride.

Основная информация

Тип судна: Моторная яхта

Модельный год: 2018

Год постройки: 2018

Страна: United States

Открытая палуба мостика: Да

Размеры

Длина общая: 65' 0" (19.81m)

Ширина: 17' 2" (5.23m)

Макс. осадка: 4' 11" (1.50m)

Скорость, вместимость и масса

Крейс. скорость: 27 Kts. (31 MPH)

Макс. скорость: 30 Kts. (35 MPH)

Вместимость воды: 140 Gallons

Объем топливного бака: 976 Gallons

Размещение

Всего кают: 3

Спальные места: 6

Каюты экипажа: 1

Койки экипажа: 2

Спальных мест экипажа: 2

Корпус и палуба

Материал корпуса: Fiberglass

Информация о двигателе

Двигатели: 2

Производитель: Caterpillar

Модель: C-18

Тип двигателя: Inboard

Тип топлива: Diesel

ПОДРОБНОЕ ОПИСАНИЕ

Overview

SILVER LINING is truly one of the nicest Ferretti 650's available in the USA. SILVER LINING was built in 2018 to full US spec. She has had light-owner use, is in excellent condition, and has only 633 hours on the Caterpillar 1,150 hp C18s. The Seakeeper 9 gyro and low center of gravity provide an impressively smooth and stable ride. The open floor plan flows from the aft deck dining area through a large sliding glass door and opening glass side panel, past the aft galley and through the salon and lower helm. 3 staterooms and 3 heads accommodate 6 guests in contemporary surroundings forward and an accommodating crew area has a bunk room for 2 and a full head located aft.

Key Features

- Caterpillar 1,150 hp C18s with 633 hours and extended warranty
- US Spec 60hz Electrical
- Seakeeper 9
- Sea Recovery Aquawhisper 700 Water Maker
- Bow and Stern Thrusters
- Passerelle
- Hydraulic Lifting Platform

Salon

The Salon has an inviting, contemporary feel and flows fore and aft unobstructed, from the aft galley to the panoramic windows forward.

- Large leather seating area to port
- Large leather U-shaped settee to starboard
- Convertible table for dining
- Tropical spec air conditioning
- Pop-up TV and surround sound system
- Cabinets with shelves
- Hardwood floor
- LED lighting with color change in one area
- Motorized Roman blinds

Galley

Aft of the salon, the galley is in the optimum position for entertaining guests. A large, sliding glass door opens along with a side window for open-air living and bar service to the aft deck.

- Isotherm stand-up refrigerator and freezer
- Stainless steel sink
- Ceramic cooktop
- Samsung Convection microwave
- Siemens drawer-type dishwasher
- LED lighting
- Access to the aft deck through a large, sliding door and side window
- Marble countertop
- Icemaker
- Abundant storage

Aft Deck

The spacious aft deck is nicely complemented by a covered alfresco dining area with room for 6 people around the beautiful wood dining table. A small bar makes passing food and refreshments through the opening side window from the galley a joy. An ice maker is located in this bar area as well. Aft to either side you find gates leading to the stairs to the boat deck and swim platform. Wrap around decks on both sides lead to the foredeck. On the port side, a remote docking station is easy to reach and is just aft of the door to the crew quarters. Centerline in the deck is the engine room hatch making maintenance a breeze.

- Bench seat aft
- Large wood dining table
- Folding aluminum chairs
- Swim platform gates
- Passarelle access and controls
- Swim ladder controls
- Hydraulic dinghy platform/swim platform controls
- Crew quarters access
- Engine room hatch
- LED lighting
- Remote docking controls
- Concealed cleats, warping winches, and line storage
- Teak deck with light grey caulking

Master Stateroom

Midship and full-beam is the stunning master stateroom. The centerline berth has water views on both sides through oversized hull side windows.

- Centerline master berth
- Nightstands
- Reading lights
- Air conditioning control
- Plenty of storage in lockers and drawers
- Chaise lounge beneath the starboard window
- Carpet
- LED lighting
- TV with surround sound
- Retractable blinds
- Safe
- Accented headboard
- Large hanging locker
- Ensuite head
- Large hull windows with opening portlight

Master Bath

- Sink with textured backsplash
- Toilet
- Walk-in shower with glass door
- LED lighting
- Dedicated towel storage
- Cabinets
- Hardwood flooring
- Opening portlights

VIP Stateroom at Bow

- Centerline berth
- Nightstands
- Reading lights
- Overhead hatch with shade
- LED lights
- Air conditioning control

- TV
- Hanging locker
- Storage cabinets and drawers
- Carpeting
- Ensuite head
- Full-length mirror
- Large hull windows with opening portlights

VIP Bath

- Sink
- Toilet
- Shower with tempered glass door
- Wooden flooring
- LED lighting
- Opening port lights

Twin Stateroom

- Side by side twin beds
- Nightstands
- Reading lights
- 2 x Hull windows with stainless steel open/close portholes
- Mirror
- Carpet
- LED lights

Twin Guest Bath

- Sink
- Toilet
- Shower
- Storage
- LED lighting
- Storage cabinets

Flybridge

- Accessed from aft deck
- Upper helm with full instrumentation and electronics

- Fusion audio system
- Tanning bed forward
- Captain and passengers' forward-facing bench seats
- Grill and bar console
- Teak decking
- Large, U-shaped dining area
- Bimini top

Foredeck

- Teak side decks and foredeck
- Sun pad
- Windlass and anchor
- Anchor lockers
- SS railing

Lower Helm

- Full instrumentation
- 2 x Furuno Multifunction Displays
- Bow and Stern Thruster Controls
- Flir Control
- Quick Anchor Controls
- Caterpillar Displays
- Ferretti Systems Monitor
- VHF
- Seakeeper Display
- Spotlight Control
- Breakers and Switchgear for AC and DC

Crew Cabin

- Access to the main deck area through non-slip steps
- Air conditioning
- 2 x Bunks
- LED lights
- Cabinets with lockers
- Stainless steel open/close portholes
- Wardrobe

Crew Head

- Sink
- Toilet
- “Wet head shower”
- LED lights

Engine Room and Mechanical Equipment

- Twin Caterpillar 1150hp C18s, 633 hrs with extended warranty
- Seakeeper 9 Gyro-stabilizer
- Change over valves for emergency water pumping from the bilge
- Electric bilge pump
- 2 x Electric ventilation fan
- Fire extinguishing system with automatic/manual control
- Freshwater outlet for filling and washing
- Fuel tank level indicator
- GRP fuel tank (lt. 3700) with settling tank and discharge
- Portable lamp
- 2 x Racor diesel engine filters (2) with bypass
- Racor diesel generator filter
- Sea strainer for generator cooling system
- Sea strainers for engine cooling systems
- Watertight forward bulkhead
- Flooring with non-slip surface
- Air conditioning 60,000 BTU (tropical)
- Electric bow & stern Thruster
- Hydraulic steering
- Stuffing boxes with dripless shaft seals
- Underwater silenced exhausts
- V-Drive ZF transmissions
- Access to the cockpit through a hatch and a stainless steel and teak ladder
- Seakeeper 9 Gyro-stabilizer
- Sea Recovery Aquamatic 700 gpd Water Maker
- Passerelle

Electronics

- Furuno autopilot control unit
- 2 x Furuno Chartplotter
- Furuno radar
- VHF

- 4 x Cameras
- FLIR night-vision
- KVH HD7 Satellite TV
- 5 x TV receivers
- ZF Engine controls

Safety and Firefighting Equipment

- Fire Extinguishing System
- FM200 fire extinguishing system in the engine room with automatic/manual control
- Portable fire extinguishers
- Pull handles in the engine room (engine and generator shut down, activation of fire extinguishing system)
- Smoke detection alarm system in the engine room
- Smoke detectors in each area: salon, master, VIP, guest, crew and thruster storage

Electrical System

- 12v Battery charger for generator
- 21.5kW 60hz Onan Generator 935 (March 2021)
- Automatic battery charger (24V) for engine start & auxiliary service batteries
- Battery disconnecting switches: mechanical (engine room) and electronic (cockpit)
- Breaker box
- Carling Switch 50 A for shore supply
- Cathodic protection with zinc anodes
- Double Electric outlets (120 V)
- Galvanic isolator (50 A)
- Generator starting battery 12V
- Ground fault interrupters 120V - 6mA
- 24V auxiliary service batteries
- 24V batteries for engine starting
- LED Lighting throughout 24 V
- Manual battery disconnecting switch for generator
- Mechanical (cockpit) and instant (main helm position) electric battery parallel switch
- Shore plug (50 A 120/240 V)
- Shore power GFI 50A-30mA

Bilge System

- Electric automatic bilge pumps (aft platform, engine room, accommodation space, crew area)

- Emergency bilge suction pipe (engine room) through engine cooling pump
- Sanitary and water systems
- Automatic grey water discharge system
- Blackwater system with tank
- Blackwater deck connection for dockside tank pump-out
- Electric WC system with fresh water
- Freshwater autoclave pump (24 V) with electronic control
- Freshwater tank (1t 530)
- Independent seawater intake for air conditioning with filter Independent seawater intake for generator with filter
- Independent seawater intake for water maker with filter
- Seawater autoclave pump for washing and firefighting with a hose at bow
- Water heater (120 V, 80 lt)

Исключения

При продаже яхты исключаются личные вещи владельца.

Отказ от ответственности

Компания предоставляет описание судна или яхты добросовестно, но не может гарантировать точность этой информации, а также не ручается за техническое состояние. Покупатель должен проинструктировать своих агентов или оценщиков исследовать представленную информацию более подробно, по собственному желанию. Продажа судна или яхты, изменение цены или снятие с продажи будет происходить без предварительного уведомления.

ФОТОГРАФИИ

Salon



Salon



Salon



Galley



Galley



Aft Deck



Aft Deck



Aft Deck Controls



Master Stateroom



Master Stateroom



Master Head



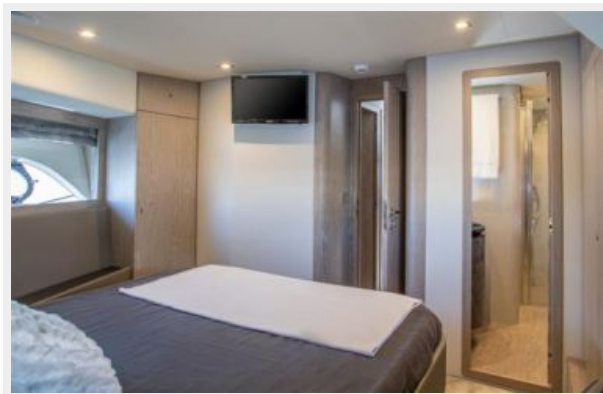
Master Head



VIP Stateroom



VIP Stateroom



VIP Head



VIP Head



Guest Stateroom



Guest Stateroom



Guest Head



Flybridge Helm and Sun Pad



Flybridge Seating and Grill / Bar



Flybridge Bar / Grill



Foredeck



Lower Helm



Lower Helm and Breaker Panels



Crew Cabin



Crew Hall



Crew Head



Engine Room - Port Engine



Engine Room - Starboard Engine



Seakeeper 9 Gyro Stabilizer



Engine Room - Generator and Watermaker



Overhead Starboard Bow



Overhead Port



Overhead



Silver Lining GA



КОНТАКТЫ

Андрей Шестаков (Andrey Shestakov) – ведущий яхтенный брокер отдела продаж яхт и судов компании Shestakov Yacht Sales Inc. Официальный представитель Shestakov Yacht Sales Inc. для русскоговорящих клиентов в центральном офисе компании в Майами/Форт Лодердейл/Флорида/США.

Контактная информация

Email: andrey@shestakovyachtsales.com

Web: shestakovyachtsales.com

Телефоны

Краснодарский край: **+7(918)465-66-44**

США, Майами, Флорида: **+1(954)274-4435**

Время работы

Понедельник – Суббота: **9:00 - 21:00**
EDT

Воскресенье: **Закрито**

Адрес



Harbour Towne Marina, 850 NE 3rd St,
STE 213, Dania, FL 33004