

SOULMATE — DL YACHTS - DREAMLINE



Судостроитель: [DL Yachts - Dreamline](#)

Год постройки: 2016

Модель: Моторная яхта

Цена: **ЦЕНА ЯХТЫ ПО ЗАПРОСУ**

Местонахождение: France

Длина общая: 112' 11" (34.40m)

Ширина: 23' 8" (7.20m)

Макс. осадка: 6' 11" (2.10m)

Крейс. скорость: 16 Kts. (18 MPH)

Макс. скорость: 21 Kts. (24 MPH)

Купить **SOULMATE — DL Yachts - Dreamline** а также выбрать подходящую вам яхту из нашего каталога яхт вам поможет опытный яхтенный брокер Андрей Шестаков. На сегодняшний день компания **Shestakov Yacht Sales Inc.** имеет большое количество яхт в собственном списке продаж, а также тесно сотрудничает со всеми крупными яхтенными производителями по всему миру.

Для того чтобы купить яхту **SOULMATE — DL Yachts - Dreamline** а также проконсультироваться по любому вопросу связанному с покупкой, продажей, чартером яхт позвоните по телефону **+7(918)465-66-44**.

ОГЛАВЛЕНИЕ

ОГЛАВЛЕНИЕ	2
ХАРАКТЕРИСТИКИ	4
Обзор	4
Основная информация	5
Размеры	5
Скорость, вместимость и масса	5
Размещение	5
Корпус и палуба	6
Информация о двигателе	6
ПОДРОБНОЕ ОПИСАНИЕ	7
Long Description	7
Исключения	14
Отказ от ответственности	14
ФОТОГРАФИИ	15
soulmate_jan20_page_01_image_0001	15
soulmate_jan20_page_03_image_0001	15
soulmate_jan20_page_04_image_0001	15
soulmate_jan20_page_04_image_0002	15
soulmate_jan20_page_06_image_0002	15
soulmate_jan20_page_05_image_0001	15
soulmate_jan20_page_06_image_0001	16
soulmate_jan20_page_06_image_0003	16
soulmate_jan20_page_07_image_0001	16
soulmate_jan20_page_07_image_0002	16
soulmate_jan20_page_07_image_0003	16
soulmate_jan20_page_07_image_0004	16
soulmate_jan20_page_09_image_0001	17
soulmate_jan20_page_08_image_0001	17

soulmate_jan20_page_09_image_0002	17
soulmate_jan20_page_12_image_0002	17
soulmate_jan20_page_10_image_0001	17
soulmate_jan20_page_12_image_0003	17
soulmate_jan20_page_12_image_0001	18
soulmate_jan20_page_02_image_0001	18
soulmate_jan20_page_09_image_0003	18
soulmate_jan20_page_11_image_0001	18
ml ga	18
КОНТАКТЫ	19
Контактная информация	19
Телефоны	19
Время работы	19
Адрес	19

ХАРАКТЕРИСТИКИ

Обзор

Launched in late summer 2015 and delivered to her first Owner in Spring 2016, the award winning SOULMATE provides the facilities and volume of a much larger yacht in a supremely elegant and sophisticated package, with over two million Euros of options specified. Providing accommodation for up to 10 guests in 5 beautifully appointed cabins, the yacht presents in immaculate condition following extensive winter works where she completed her 5-years Special Survey and is now in a condition which can only be described as “as-new”. A unique feature of this yacht is that she complies fully with Maltese commercial registration while also benefitting from full EU VAT paid status, allowing her to switch registrations at will according to her Owner's wishes. Furthermore she has a proven charter record with over Eur 500,000 in charters booked for the coming summer, SOULMATE is a charter machine.

The naval architects at Studio Arrabito designed a semi-displacement hull that when required would cut through the waves at high speed with her sharp edged bulbous bow, ensuring a smooth ride with low fuel consumption at displacement speeds. This highly efficient hull ensures that the yacht consumes only 90 litres/hour @ 10 knots.

CMC Zero Speed stabilisers ensure that guests have the minimum of motion at anchor and maximum comfort at all times underway. Further options that enhance guest comfort on board are a 160 cm (5'3") wide hydraulic bathing ladder with a deck lift function that guarantees easy access to the sea for old and young alike, and a complete Bang & Olufsen AV/IT upgrade around the yacht ensuring entertainment for all the family is always available wherever you are on the yacht. A beautiful yacht offered for sale in immaculate condition that will be appreciated by any discerning Owner.

- KEY FEATURES

- A highly customised yacht built to a high standard & specification, jam-packed with options and accessories with over €2m of optional extras installed
- Award-winning Enrico Gobbi design, combined with naval architecture by the renowned Studio Arrabito
- Immaculate condition; just passed her 5-years special survey and only 1050 engine hours with two very caring Owners from new and no expense spared on her maintenance; shows like a new yacht
- Incredibly spacious for her length overall, on-deck Master Cabin with skylight & panoramic views, massive fly bridge with retractable rooftop and pool, and well appointed and spacious Guest Cabins
- Proven Charter records, over EUR 500k in charters booked for the 2021 season
- Commercially Compliant on a Maltese flag
- EU VAT paid in Malta and with a motivated Seller

Основная информация

Тип судна: Моторная яхта	Модельный год: 2016
Год постройки: 2016	Год обновления: 2021
Вид обновления: Mechanical overhaul	Страна: France
Открытая палуба мостика: Да	

Размеры

Длина общая: 112' 11" (34.40m)	Ширина: 23' 8" (7.20m)
Макс. осадка: 6' 11" (2.10m)	

Скорость, вместимость и масса

Крейс. скорость: 16 Kts. (18 MPH)	Дальность на крейсерской скорости: 2000
Макс. скорость: 21 Kts. (24 MPH)	Дальность на макс. скорости: 10 Kts.
Водоизмещение: 274000 Pounds	Чистый вес: 207 Pounds
Вместимость воды: 634.0129248 Gallons	Объем топливного бака: 4279.5872424 Gallons

Размещение

Всего кают: 5	Спальные места: 10
Спальных мест экипажа: 6	

Корпус и палуба

Материал корпуса: GRP

Материал палубы: Teak

Дизайнер корпуса: Studio Arrabito

Дизайнер экстерьера: Enrico
Gobbi/Team4Design

Дизайнер интерьера: Enrico
Gobbi/Team4Design

Информация о двигателе

Двигатели: 2

Производитель: MTU

Модель: 12V2000M94

ПОДРОБНОЕ ОПИСАНИЕ

Long Description

1. MAIN CHARACTERISTICS

TYPE	◦ Semi-Displacement Motor Yacht
HULL NO.	◦ DL34/01
BUILDER	◦ Dreamline Yachts
NAVAL ARCHITECT	◦ Arrabito Naval Architects
EXTERIOR DESIGN	◦ Enrico Gobbi/Team4Design
INTERIOR DESIGN	◦ Enrico Gobbi/Team4Design
CLASSIFICATION	◦ RINA Commercially Compliant
YEAR	◦ Launched 2015, Commissioned 2016
CONSTRUCTION	◦ GRP Hull & Superstructure, Teak Decks ◦ Lama Waveless Hull ® – for efficient hull design
CREW	◦ Up to 6 x Crew in 3 Cabins
FLAG	◦ Malta
ENGINES	◦ 2 x 1,920Hp MTU 12V2000M94
GT	◦ 207 tonnes
DISPLACEMENT	◦ 137 tonnes / 302,033 lbs

2. DIMENSIONS

LOA	◦ 34.30m / 113'10"
BEAM	◦ 7.20m / 24'7"
DRAFT	◦ 2.10m / 6'10"

3. SPEED & RANGE UNDER POWER

MAXIMUM SPEED	◦ Approx. 21 knots
CRUISING SPEED	◦ 16 knots
RANGE	◦ Approx. 2,000 nm @ 10 knots
FUEL CONSUMPTION	◦ 90 litres/hour @ 10 knots approx. ◦ 360 litres/hour @ 14.5 knots approx.

4. CAPACITIES

ACCOMMODATION	◦ 10 x Guests in 5 cabins
CREW	◦ Up to 6 x Crew in 3 cabins
FUEL	◦ 16,200 litres / 4,279 US gallons
FRESH WATER	◦ 2,400 litres / 634 US gallons

5. ACCOMMODATION

The highly customised and luxurious interior is beautifully finished, with cream furnishings

and dark accents complemented by custom-built Italian designer furniture and accessories. SOULMATE also has some unique features rarely found on yachts this size, like the back-lit onyx wall, handcrafted mosaics, and a fold-down balcony on the portside of the saloon from which to enjoy uninterrupted views while having lunch or dinner. Altogether the atmosphere feels warm & welcoming from the first time you set foot on-board her. An extensive upholstery- and soft furnishing refresh by Sabrina Monte Carlo undertaken in both Spring 2019 & 2020 has also given an extra element of “as-new” feel to the yacht.

The Master Cabin, located forward on the main deck benefits from an abundance of natural light from an uninterrupted window running across almost the entire width of the main deck - as well as the two large skylights positioned above the bed. An additional feature unusual for this size yacht is the access to a private Owner's area at the bow. The remaining four cabins (two VIPs, a double and a twin) are located on the lower deck. All are finely decorated in the same style and quality as the owner's cabin and every cabin is equipped with its own onyx and marble-lined ensuite bathroom.

SOULMATE also benefits from extensive exterior spaces, with a vast sundeck the size that one might more reasonably expect on a 40 metre raised pilothouse yacht. The sundeck here is also equipped with expensive optional extras like a custom glass spa pool complete with waterfall, retractable hard-top, and bar & entertainment area including TV. There are multiple Alfresco dining options thanks to the large seating area at main deck aft, on the sundeck and on the private owners terrace at the bow.

- MASTER STATEROOM
 - Voluminous Owner's suite on main deck with panoramic outlook & big skylights
 - Access to foredeck
 - Fridge-bar
 - Electric blinds
 - En-suite facilities with marble floors
- VIP CABIN
 - 2 x VIP Cabins with king size double beds
 - Electric blinds
 - En-suite facilities with marble floors
- GUEST STATEROOMS
 - 1 x Double Guest Cabin with king size bed
 - 1 x Twin Single Guest Cabin
 - Each Cabin with en-suite facilities with marble floors
- DINING ROOM
 - Custom-made lamp by Barovier & Toso's glazier in dining area

- Hydraulic side balcony facing the dining area
 - Electric side door full height with access to side balcony
- MAIN SALOON
 - Fully customized warm and intimate interiors with Minotti & Armani furniture
 - Fridge-bar in Salon with Ice Maker
 - Electric blinds
 - Electric side doors in pantry – Lobby – Owner Cabin
 - Folding hydraulic balcony
 - Large continuous windows on main deck
 - Parquet floor in Salon, Pilothouse and Pantry, Lower deck lobby
- FRONT DECK
 - Bimini top on Front Deck manual with LED lights
 - Anchor Locker, large storage space for water toys and inflatables
- CREW
 - 3 x Crew cabins
 - 1 x En-suite facilities Captain 's cabin
 - 1 x En-suite facilities Crew cabins
- SUN DECK
 - Huge sundeck with glass whirlpool and shower
 - Exterior waterproof TV screens with electric opening systems
 - Extendable Commander Bridge® on sundeck helm station
 - Hardtop with sliding glass roof and LED lights
 - Dedon deck furniture
 - Lobster tank
 - Teppanyaki grill with Frigo
 - 2 x Miele Hot plates
- FORE DECK
 - Fore deck with 2 built-in sun pads
 - Shading provided by parasol
 - Storage space, anchor locker
- COCKPIT
 - Large cockpit area with an integrated sun lounge
 - Built in furniture
 - Exterior waterproof TV screens with electric opening systems
 - Dedon loose deck furniture
- PILOTHOUSE
 - 2 x Besenconi Electric adjustable Pilot Seat in Pilothouse

6. MECHANICAL EQUIPMENT

- | | |
|---------------------|--|
| ENGINES | ○ 2 x 1,920Hp MTU 12V2000M94 |
| ENGINE HOURS | ○ As of March 22nd 2021:
○ Port: 1051hrs Starboard: 1065hrs |
| PROPELLERS | ○ 2 x Rolla Propeller 5-blades |
| STABILISERS | ○ Hydraulic CMC Marine Stabilizers Zero Speed |

**BOWTHRUSTER
STERNTHRUSTER**

- CMC Marine Bow thruster electric
- CMC Marine Stern thruster hydraulic

GENERATORS

- 2 x Kohler, 1 x 70 kW & 1 x 53 kW 230/400 V 50Hz
- 1 x Fischer Panda 36 kW Night Generator

GENERATOR HOURS

- As of March 22nd 2021:
- Gen 2: 1833hrs Gen 1 : 2230hrs

BATTERIES

- Battery System for service, engine and start circuit

BATTERY TYPE

- Maintenance free Gel type

AIR CONDITIONING

- Condaria 240.000BTU, with Air-Treatment

WATER MAKER

- Idromar

SEWAGE SYSTEM

- Hamann Purification Plant

FUEL CENTRIFUGE

- Alpha – Laval fuel cleaner

FUEL FILTERS

- 2 x Double Racor

7. NAVIGATION EQUIPMENT**NAVIGATION EQUIPMENT**

- i-Bridge® Single Touch by Team Italia,
- Customized Monitoring system (tank levels,
- lights, AC, engine data, doors and hatches,
- technical data) comprised of 5 x touch screens

RADAR

- 2 x Furuno Navnet 3

GPS

- 1 x GPS Furuno

CHART PLOTTER

- 2 x Plotter via Furuno Navnet3
- 1 x Time Zero new 2020

CAMERA(S)

- 6 x Cameras

AIS

- Raymarine 4000, classA

8. COMMUNICATION EQUIPMENT**SATCOM**

- Sea Tel 3004 100cm TV-SAT antenna automatic Digital
- Sea Tel V-SAT 3001 100cm antenna for Data / Voice
- communication

VHF

- 2 x VHF, including 1 Sailor DSC

SSB

- 1 x SSB Sailor

9. DECK EQUIPMENT**ANCHOR
WINDLASSES**

- Double windlass Vertical Ercole by Lofrans

**AFT WARPING
CAPSTANS**

- Double winches in Cockpit by Lofrans

ANCHORS

- 2 x incl. chains 2 x 120m

**BOAT CRANE &
DAVITS**

- Hydraulic Tender and Jetski Garage with lifting crane by Sanguinetti 1200kg lifting capacity

PASSERELLE

- Besenzoni hydraulic extra wide aft gangway

- SIDE BOARDING LADDER SIDE BOARDING GANGWAY**
 - Besenzoni custom-made hydraulic
 - Side hydraulic gangway for tender boarding
- POOL/JACUZZI SWIMMING PLATFORM**
 - Custom-made glass Whirlpool on Flybridge
 - Custom-made Extendable Hydraulic Swim Platform covered with Teak lifting capacity 800kg
- AWNINGS COVERS**
 - Cockpit Canvas full enclosure
 - Rain-Cover for all Sunbeds, Chairs and Windscreen
- BATHING LADDER**
 - Besenzoni 160 cm wide / 200 cm long hydraulic bathing ladder
- UNDERWATER LIGHTS**
 - Underwater Hull Lighting including underwater
 - camera stern side Special effect lighting system with LEDs outside- inside

10. ENTERTAINMENT EQUIPMENT

- MAIN SALOON
 - Apple TV
 - 1 x B&O TV 46"
 - HI-FI/DVD/TV system Bang & Olufsen
 - Universal Receiver for SAT-TV
 - B&O BeoSound 5
 - Dimmer Light Regulation
- SEATING AFT DECK
 - HI-FI / TV 32' for with electric opening system
 - Dimmer Light Regulation
- SUNDECK
 - HI-FI / TV 32' for with electric opening system
- OWNER'S STATEROOM
 - Videoworks
 - HI-FI/DVD/TV system Bang & Olufsen
 - 1 x B&O TV 46"
 - Universal Receiver for SAT-TV
 - B&O BeoSound 5
 - Dimmer Light Regulation
- VIP CABIN
 - Videoworks
 - HI-FI/DVD/TV system Bang & Olufsen
 - 1 x B&O TV 40"
 - Universal Receiver for SAT-TV
 - Dimmer Light Regulation
- GUEST CABINS
 - Videoworks
 - HI-FI/DVD/TV system Bang & Olufsen

- 1 x B&O TV 40"
 - Universal Receiver for SAT-TV
 - Dimmer Light Regulation
 - CREW
 - Universal Receiver for SAT-TV
 - Dimmer Light Regulation
 - Radio/CD/DVD, TV LED screen 22"
 - FLYBRIDGE
 - HI-FI / TV 32" for with electric opening system
11. GALLEY & LAUNDRY EQUIPMENT
- GALLEY
 - Miele Ceran Cooking Plate
 - Miele Microwave
 - 3 Zones Frigo in Stainless Steel
 - Miele Dishwasher
 - Miele Oven
 - Miele Coffee machine
 - Wine Cooler
 - CREW QUARTERS
 - Refrigerator
 - Washing Machine/Dryer
12. SECURITY & SAFETY EQUIPMENT
- SAFETY
 - 2 x Safe
 - 4 x Inflatable Life-Rafts 4 x 8 Persons
 - Emergency Switch Board in Pilothouse
 - SECURITY
 - CCTV control system with 6 cameras Deck, Fly, Cockpit, Engine room
 - FIRE FIGHTING
 - Automatic Antifire System with Fire - Smoke Warning System for all Cabins and Engine room
13. TENDERS & WATERSPORTS EQUIPMENT
- TENDERS
 - 1 x Williams 5m Diesel jet incl. lifting tools and support, fully serviced 2020
 - WATER SPORTS
 - 1 x Sea Doo Jet Ski incl. lifting tools and support, fully serviced 2020
14. REFIT
- Winter 2020-2021
 - Completed 5-years RINA Special Survey
 - Major Service or replacement of all pumps
 - (all sea water valves changed for new, new cutlass bearings, controls of propellor shafts and rudders...)
 - Cleaning of Grey and Black water tanks
 - Cleaning of Forward Fuel tank and 2 x day tanks

- Full service of both Generators
- Full service of both Main Engines and Gearboxes
- New compressor of Galley fridge
- New starting batteries main engines and generators
- Service of both Windlasses
- Cleaning and painting of engine room bilges
- Winter 2019-2020
 - Replaced & serviced fuel pump, water pump, coolant Main Engine portside
 - Fully serviced Main Engine starboard
 - Replaced exhaust elbow & part of exhaust piping Generator 1
 - Replaced A/C sea water pump & piping, circulating pump overhauled
 - A/C system rinsed and replaced glycol in system
 - Carried out major service on stern hydraulic platform, stainless steel supports repaired and reinforced, hydraulic leaks contained
 - Replaced membranes on Idromar Water maker, system serviced
 - Replaced elements & anodes on Boilers
 - Replaced hot water circulating pump
 - Replaced macerating pump & dosing pump motor Hamann sewage treatment
 - Replaced one water pump, the piping , compressor starter fridge system & overhauled two further water pumps
 - Carried out Megger test
 - Replaced Central UPS 10KV
 - Williams tender and Seadoo Jet Ski fully serviced & repaired
 - Replaced swivel links (Rina certified) on both anchor chains
 - Undertook annual RINA survey
 - All works to make SOULMATE comply with RINA Commercial on Maltese flag successfully carried out

15. COMMENTS

Launched in late summer 2015 and delivered to her first Owner in Spring 2016, the award winning SOULMATE provides the facilities and volume of a much larger yacht in a supremely elegant and sophisticated package, with over two million Euros of options specified. Providing accommodation for up to 10 guests in 5 beautifully appointed cabins, the yacht presents in immaculate condition following extensive winter works where she completed her 5-years Special Survey and is now in a condition which can only be described as “as-new”. A unique feature of this yacht is that she complies fully with Maltese commercial registration while also benefitting from full EU VAT paid status, allowing her to switch registrations at will according to her Owner's wishes. Furthermore she has a proven charter record with over Eur 500,000 in charters booked for the coming summer, SOULMATE is a charter machine.

The naval architects at Studio Arrabito designed a semi-displacement hull that when required would cut through the waves at high speed with her sharp edged bulbous bow,

ensuring a smooth ride with low fuel consumption at displacement speeds. This highly efficient hull ensures that the yacht consumes only 90 litres/hour @ 10 knots.

CMC Zero Speed stabilisers ensure that guests have the minimum of motion at anchor and maximum comfort at all times underway. Further options that enhance guest comfort on board are a 160 cm (5'3") wide hydraulic bathing ladder with a deck lift function that guarantees easy access to the sea for old and young alike, and a complete Bang & Olufsen AV/IT upgrade around the yacht ensuring entertainment for all the family is always available wherever you are on the yacht. A beautiful yacht offered for sale in immaculate condition that will be appreciated by any discerning Owner.

o KEY FEATURES

- A highly customised yacht built to a high standard & specification, jam-packed with options and accessories with over €2m of optional extras installed
- Award-winning Enrico Gobbi design, combined with naval architecture by the renowned Studio Arrabito
- Immaculate condition; just passed her 5-years special survey and only 1050 engine hours with two very caring Owners from new and no expense spared on her maintenance; shows like a new yacht
- Incredibly spacious for her length overall, on-deck Master Cabin with skylight & panoramic views, massive fly bridge with retractable rooftop and pool, and well appointed and spacious Guest Cabins
- Proven Charter records, over EUR 500k in charters booked for the 2021 season
- Commercially Compliant on a Maltese flag
- EU VAT paid in Malta and with a motivated Seller

Исключения

При продаже яхты исключаются личные вещи владельца.

Отказ от ответственности

Компания предоставляет описание судна или яхты добросовестно, но не может гарантировать точность этой информации, а также не ручается за техническое состояние. Покупатель должен проинструктировать своих агентов или оценщиков исследовать представленную информацию более подробно, по собственному желанию. Продажа судна или яхты, изменение цены или снятие с продажи будет происходить без предварительного уведомления.

ФОТОГРАФИИ

soulmate_jan20_page_01_image_0001



soulmate_jan20_page_03_image_0001



soulmate_jan20_page_04_image_0001



soulmate_jan20_page_04_image_0002



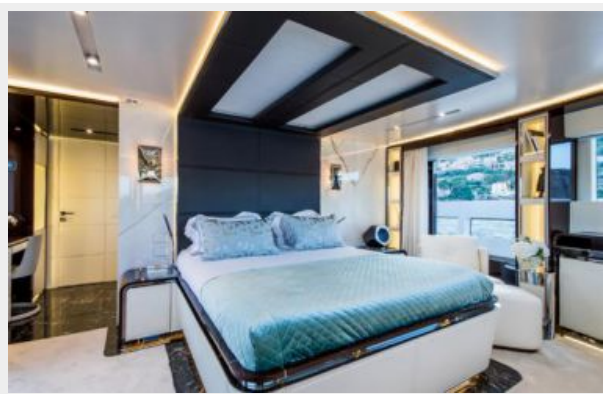
soulmate_jan20_page_06_image_0002



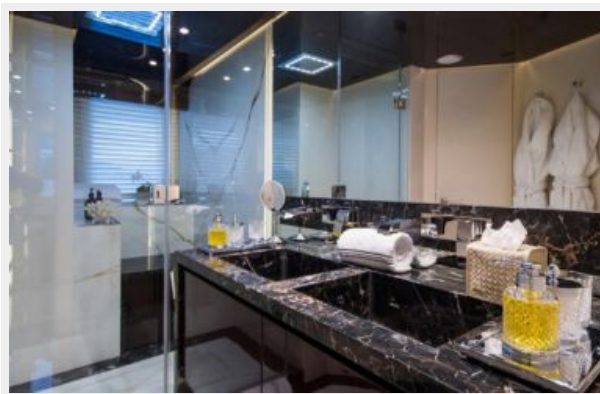
soulmate_jan20_page_05_image_0001



soulmate_jan20_page_06_image_0001



soulmate_jan20_page_06_image_0003



soulmate_jan20_page_07_image_0001



soulmate_jan20_page_07_image_0002



soulmate_jan20_page_07_image_0003



soulmate_jan20_page_07_image_0004



soulmate_jan20_page_09_image_0001



soulmate_jan20_page_08_image_0001



soulmate_jan20_page_09_image_0002



soulmate_jan20_page_12_image_0002



soulmate_jan20_page_10_image_0001



soulmate_jan20_page_12_image_0003



soulmate_jan20_page_12_image_0001



soulmate_jan20_page_02_image_0001



soulmate_jan20_page_09_image_0003



soulmate_jan20_page_11_image_0001



ml ga



КОНТАКТЫ

Андрей Шестаков (Andrey Shestakov) – ведущий яхтенный брокер отдела продаж яхт и судов компании Shestakov Yacht Sales Inc. Официальный представитель Shestakov Yacht Sales Inc. для русскоговорящих клиентов в центральном офисе компании в Майами/Форт Лодердейл/Флорида/США.

Контактная информация

Email: andrey@shestakovyachtsales.com

Web: shestakovyachtsales.com

Телефоны

Краснодарский край: **+7(918)465-66-44**

США, Майами, Флорида: **+1(954)274-4435**

Время работы

Понедельник – Суббота: **9:00 - 21:00**
EDT

Воскресенье: **Закрито**

Адрес



Harbour Towne Marina, 850 NE 3rd St,
STE 213, Dania, FL 33004