

DREAMS — MONTE CARLO YACHTS



Builder: MONTE CARLO YACHTS

Year Built: 2015

Model: Cruising Yacht

Price: PRICE ON APPLICATION

Location: United States

LOA: 45' 0" (13.72m)

Beam: 13' 5" (4.09m)

Max Draft: 3' 9" (1.14m)

Our experienced yacht broker, Andrey Shestakov, will help you choose and buy a yacht that best suits your needs **DREAMS — MONTE CARLO YACHTS** from our catalogue. Presently, at Shestakov Yacht Sales Inc., we have a wide variety of yachts available on our sale's list. We also work in close contact with all the big yacht manufacturers from all over the world.

If you would like to buy a yacht **DREAMS — MONTE CARLO YACHTS** or would like help answering any questions concerning purchasing, selling or chartering a yacht, please call **+1(954)274-4435**

TABLE OF CONTENTS

TABLE OF CONTENTS	2
SPECIFICATIONS	5
Overview	5
Basic Information	5
Dimensions	5
Speed, Capacities and Weight	5
Accommodations	5
Hull and Deck Information	6
Engine Information	6
DETAILED INFORMATION	7
Manufacturer Provided Description	7
Salon	7
Helm Station Equipment	7
Galley	8
Master Stateroom, Midship	9
Master Head	9
VIP Stateroom, Forward	10
VIP Head	10
Deck Equipment	11
Deck Safety	11
Cockpit	11
Flybridge	12
Electrical Equipment	13
Engines	13
Exclusions	14
Disclaimer	14
PHOTOS	15
2	15

3	15
4	15
5	15
6	15
7	15
8	16
9	16
11	16
10	16
13	16
12	16
14	17
15	17
16	17
17	17
18	17
19	17
20	18
21	18
22	18
23	18
25	18
24	18
26	19
27	19
28	19
29	19
30	19
31	19

32	20
33	20
34	20
35	20
36	20
37	20
38	21
39	21
40	21
41	21
42	21
43	21
44	22
45	22
46	22
47	22
49	22
48	22
50	23
51	23
52	23
CONTACTS	24
Contact details	24
Telephones	24
Office hours	24
Address	24

SPECIFICATIONS

Overview

This stunning Monte Carlo 4 is new to the market. Award winning layout with full beam master cabin, generous saloon and enormous flybridge which makes for great entertaining. Owner has upgraded electronics with 3 new Simrad NSS EVO 3 and installed a 4th screen NSS EVO 3 / 9" as well as a new Halo20 + Radar. Measuring 43ft in length with a hydraulic lifting swim platform and the impressive Volvo IPS system with joystick control, this boat has to be viewed to be appreciated.

Basic Information

Category: Cruising Yacht

Model Year: 2015

Year Built: 2015

Country: United States

Fly Bridge: Yes

Dimensions

LOA: 45' 0" (13.72m)

Beam: 13' 5" (4.09m)

Max Draft: 3' 9" (1.14m)

Speed, Capacities and Weight

Water Capacity: 53 Gallons

Holding Tank: 31 Gallons

Fuel Capacity: 141 Gallons

Accommodations

Total Cabins: 2

Total Heads: 2

Hull and Deck Information

Hull Material: Fiberglass

Engine Information

Engines: 2

Manufacturer: Volvo

Model: D6 IPS 500

Engine Type: Inboard

Fuel Type: Diesel

DETAILED INFORMATION

Manufacturer Provided Description

A slender silhouette extending to 43 feet and the elegance and unique features of the Monte Carlo promise. Coming on board the MC4 is like gaining passage to a real yacht – a very special feeling! The dream is within your grasp.

Salon

Alpi brushed Oak joinery

Laminate floors in the galley Slatted Teak

Ivory Carpet on the companionway and Cabins

Slatted teak floor in head compartments

(3) door sliding bay, mirror tinted, curtain "cream"

Roman blinds "cream"

Direct and indirect LED lighting

Electrical panel, starboard side of the entrance

6-seater sofa upholstered in "vibrant beige" fabric, with lounge and 1 pouffle

Foldable table, brown leather panel

Storage drawer under sofas

Samsung 27" LED television, Audio & DVD player and optional Bose speakers

Helm Station Equipment

One-piece windscreen, in non-tinted laminated glass

Mirror tinted side windows, 2 electric openings (port and starboard)

(2) Windscreen wipers with washers

Demisting system

Pilot and copilot bench with Bolster function, Beige grey PVC upholstery

Dashboard with "light brown" metallic paint

Volvo EVC screen

Tiller angle indicator

Trim Tabs control

Volvo throttle & controls

IPS joystick

Bow thruster controller

Steering compass

Functional controls: Wiper, Demister, Fog Horn, Navigation lights, Windlass

Valet tray

(2) 12" Simrad NSS EVO3 Displays

12 V socket

Fusion Stereo with Bluetooth and CD player

Galley

Kitchen-type layout

Cuisinart convection microwave with oven and Grill

Vitrifrigo 130 L refrigerator and freezer

Deep stainless-steel sink with mixer tap

Ceramic hob (2burners) Kenyon

"Bone" Corian countertop

Cutlery drawer

"Bone" - lacquer finished furniture

Splendid 7100 Washing machine / dryer combination

Storage cupboards

(2) electrical outlets

Master Stateroom, Midship

Full beam stateroom

Double berth (6'9" x 5'2")

Marine mattress

Padded bed headboard, Majilite

(2) Bedside tables with drawer and reading light

(2) Illuminated wardrobes with hanging locker and shelving

Direct and indirect LED lighting

(2) electrical outlets

(2) Panoramic opening porthole-fitted portlights with blinds "cream" blackout curtain

Samsung 24" LED TV wall mounted

Storage cupboards (port and starboard)

Master Head

Quietflush electric toilet

Shower separated by translucent door

Shower with mixer tap

Basin with mixer tap

Mirror and storage space

Automatic shower water drainage

Opening porthole with "cream" blackout curtain blinds

Towel rail

VIP Stateroom, Forward

Headroom: 6'8"

Double berth (6'6" x 4'9")

Marine mattress

Padded headboard, Majilite

Samsung 21" TV

Fusion stereo

(4) Opening portholes with "cream" blackout curtains

Long natural light wells, with opening deck hatch, fitted blinds and mosquito screen

(2) Illuminated wardrobes with hanging locker and shelving

Storage drawer under the bed

Direct and indirect LED lighting

VIP Head

Quiet-flush electric toilet

Separated shower stall with door

Basin with mixer tap

Shoer with mixer tap

Mirror and storage space

Automatic shower water drainage

Opening porthole with "cream" blackout curtain blinds

Towel rail

Deck Equipment

Radar support in stainless steel

Navigation lights

LED courtesy lights in gangways, steps and stern deck

Electric windlass 12V, Power 1000 W

(2) Mooring lockers

(2) Forward cleats, (2) midships and (4) aft in stainless steel

(2) Stainless steel fair-leads to aft of cockpit

Cup holders near bow sun pad

Opening deck hatch, 1 fixed hatch

Deck Safety

Stainless steel half open pulpit with teak step and hand rail

Stainless steel pulpit surrounds all flybridge

(2) Stainless steel handrails on access to side decks steps

Hand rail on aft transom

Cockpit

Gate access (starboard)

4 persons cockpit lounge

Upholstery PVC Diamante Snow, piping Diamante

Access hatch to engine compartment

Access hatch to large lazarette locker

Cockpit shower hose with hot water mixer tap / cold water

Access stairway to flybridge

Solid wood hydraulic swimming platform

Retractable ladder in swimming platform with solid wood steps and stainless-steel handrails

Direct and indirect LED lighting

Flybridge

Grey tinted windscreen surrounded by stainless steel frame

Steering console with: steering compass - steering wheel - electronic engine controls - tiller angle

indicator - rev counter - fuel gauge - 12 V socket - IPS joystick

Bow thruster controller

12" Simrad NSS EVO3

9" Simard NSS EVO3

Halo 20+ Radar

Simrad HS90 VHF Radio

Fusion MS-NRX200I

Controls for windlass, trim tabs, lighting, navigation lights, bilge pumps

Height adjustable pilot seat(s)

(2) Cup holders and stowage

Two-seater co-pilot bench to port, convertible into sun lounger (6'7" x 3'3")

6-person lounge seating

Natural solid wood folding table, with 4 integrated cup holders

Galley unit: Sink hot water / Cold water, Storage, Waste Bin, Plain solid wood doors and countertop

Radar support, Aerials and lights in Black lacquered polyester

Courtesy LED lighting

Exterior upholstery PVC Diamante snow, piping Diamante Espresso

Electrical Equipment

12 V 220 Electrical panel

Onan 11KW diesel generator in sound shield. (596 hours)

(8) 12 V batteries (4 Engine Batteries: 50 Ah + 4 Service batteries: 140 Ah)

Radio-controlled wireless switches (without battery)

250 V - 60Hz 50A shore supply with 50' cable and Glendinning Cable master cord retriever.

(3) bilge pumps: (2) Electric pumps - 1 Manual pump

Extinguisher

Power distributor

Battery charger 12V - 40 Ah

12V socket on steering stations (wheelhouse and flybridge)

Direct and indirect LED lighting (internal and external)

Engines

Twin Volvo IPS 500 - 2 x D6 370 HP Diesel

Fuel filter with decanter

Sea water filter

Air intakes on the deck for engine compartment cooling

Hot air extraction forced by electric ventilations

Engine room foam soundproofed

Fire extinguishing system activated from the steering station (wheelhouse and fly)

Stainless steel fuel filter

Exclusions

Owner's personal belongings.

Disclaimer

The Company offers the details of this vessel or yacht in good faith but cannot guarantee or warrant the accuracy of this information nor warrant the condition of the vessel. A buyer should instruct his representatives, agents, or his surveyors, to investigate such details as the buyer desires validated. This vessel or yacht is offered subject to prior sale, price change, or withdrawal without notice.

PHOTOS

2



3



4



5



6



7



8



9



10



11



12



13



14



15



16



17



18



19



20



21



22



23



24



25



26



27



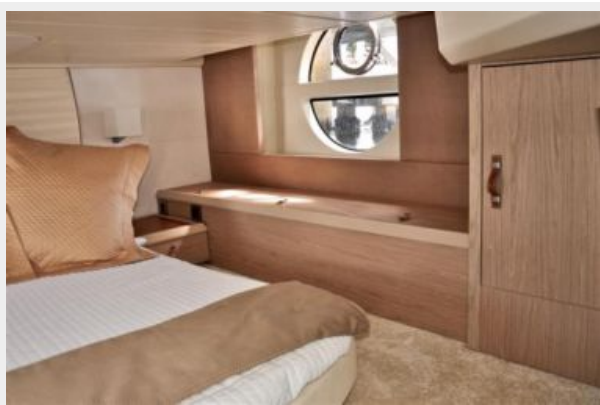
28



29



30



31



32



33



34



35



36



37



38



39



40



41



42



43



44



45



46



47



48



49



50



51



52



CONTACTS

Andrey Shestakov, leading yacht broker of the sales department of Shestakov Yacht Sales Inc. Shestakov Yacht Sales Inc., the official representative of the Miami/Fort Lauderdale FL headquarters.

Contact details

Email: andrey@shestakovyachtsales.com

Web: shestakovyachtsales.com/en/

Telephones

USA: +1(954)274-4435

Office hours

Monday – Saturday: **9:00 - 21:00** EDT

Sunday: **closed**

Address



Harbour Towne Marina, 850 NE 3rd St,
STE 213, Dania, FL 33004