

SEA MIAMI — PRINCESS YACHTS



Судостроитель: PRINCESS YACHTS

Год постройки: 2002

Модель: Моторная яхта

Цена: ЦЕНА ЯХТЫ ПО ЗАПРОСУ

Местонахождение: United States

Длина общая: 65' 0" (19.81m)

Ширина: 16' 8" (5.08m)

Макс. осадка: 4' 9" (1.45m)

Купить Sea Miami — PRINCESS YACHTS а также выбрать подходящую вам яхту из нашего каталога яхт вам поможет опытный яхтенный брокер Андрей Шестаков. На сегодняшний день компания Shestakov Yacht Sales Inc. имеет большое количество яхт в собственном списке продаж, а также тесно сотрудничает со всеми крупными яхтенными производителями по всему миру.

Для того чтобы купить яхту Sea Miami — PRINCESS YACHTS а также проконсультироваться по любому вопросу связанному с покупкой, продажей, чартером яхт позвоните по телефону **+7(918)465-66-44**.

ОГЛАВЛЕНИЕ

ОГЛАВЛЕНИЕ	2
ХАРАКТЕРИСТИКИ	3
Обзор	3
Основная информация	3
Размеры	3
Скорость, вместимость и масса	3
Размещение	4
Корпус и палуба	4
Информация о двигателе	4
ПОДРОБНОЕ ОПИСАНИЕ	5
Vessel Information	5
Исключения	7
Отказ от ответственности	7
ФОТОГРАФИИ	8
КОНТАКТЫ	16
Контактная информация	16
Телефоны	16
Время работы	16
Адрес	16

ХАРАКТЕРИСТИКИ

Обзор

Preliminary Listing - More Info to Follow

Notable Upgrades & Features

- Bow Thruster
- Huge sunroof
- Incredible interior and exterior volume for her size
- Dual garage system with one for a tender and another for a jetski flanking either side of the aft stairs
- Low Hours (1100)
- Existing charter business in Miami Beach

Основная информация

Тип судна: Моторная яхта

Модельный год: 2002

Год постройки: 2002

Страна: United States

Открытая палуба мостика: Да

Кубрик: Да

Размеры

Длина общая: 65' 0" (19.81m)

Ширина: 16' 8" (5.08m)

Макс. осадка: 4' 9" (1.45m)

Трапы: 20' 0" (6.10m)

Скорость, вместимость и масса

Вместимость воды: 157 Gallons

Вместимость сточного бака: 80 Gallons

Объем топливного бака: 1640 Gallons

Размещение

Всего кают: 4

Корпус и палуба

Материал корпуса: Fiberglass

Информация о двигателе

Двигатели: 2

Производитель: MAN

Модель: D2840 LE403

Тип двигателя: Inboard

Тип топлива: Diesel

ПОДРОБНОЕ ОПИСАНИЕ

Vessel Information

To give simply outstanding performance combined with superyacht levels of sophisticated accommodation. Propeller tunnel, chine and spray rail design all incorporate the most recent advances so as to achieve comfortable and very efficient operation at high speeds.

INTERIOR FINISH * Furniture finished in a choice of natural cherry or classic cherry with clear, deep-lacquered finish * Galley worktop in Avonite (or similar) * Choice of upholstery fabrics, carpets and curtains from co-ordinated range * Laid-timber galley floor. STORAGE * All suites and cabins have generous storage comprising lockers, drawers and shelves as appropriate.

HELM POSITION * Twin helm seats with electric adjustment for helmsman * Twin seats opposite * Teak decking * GRP framed toughened glass windscreen * Burr elm instrument panel * Full engine instrumentation * Fuel gauges * Electronic engine and gear shift controls * Hydraulic steering with power assistance * Bow thruster controls * Rudder position indicator * Trim tab controls * Horn button * Furuno 1933 colour radar and GPS/Chartplotter * Autopilot * High-speed compass * Speed log * Echo sounder with alarm * VHF radio-telephone * Anchor winch remote control * Searchlight remote control * Chart area * Twin windscreen wipers * Windscreen freshwater pressure wash * Bilge pump controls with visual 'pump running' indicators * Fuel - contamination alarm system * Remote-operation system for engine room automatic fire extinguisher.

SALOON * Sofa with dining table * Storage shelves and locker * Bar area and bottle/glass storage and drinks refrigerator * Entertainment centre incorporating TV/radio/DVD/VCR linked to hi-fi surround-sound system * Exterior speakers with interchange switch * Overhead downlighters and concealed lighting * Main electrical control panel * Opening portholes * Sliding door to the cockpit. OWNER'S SUITE * Large double bed with quilted bedspread * Dressing table * Large wardrobe with shelves * Drawers, cupboards and storage lockers * Overhead and individual berth lights * Opening portholes * TV/VCR. FORWARD GUEST CABIN * Large double bed with quilted bedspread * Dressing table * Wardrobe with shelves * Drawers, cupboards and storage lockers PORT GUEST CABIN * Two full-size single berths with quilted bedspreads GUEST SHOWER/WCCREW CABIN

ELECTRICAL SYSTEMS 24 volt: 4 x heavy-duty (130AH) batteries for engine starting * 6 x heavy-duty (130AH) auxiliary batteries * Engine alternators charge via blocking diodes to isolate engine start batteries from auxiliaries * 2 x 40-amp 24v float battery chargers connected to both battery banks * 50-amp 24v/220v float unit for lighting * Remote battery master switches with control switch at main panel * Circuit breakers on all circuits. 220/240 volt: 11kW diesel generator with own starting battery and specially silenced exhaust * Shore support inlet in cockpit * Generator/ shore support change-over switch * Powerpoints in owner's stateroom, both guest cabins, galley (double) and saloon * Polarity check system * Earth leakage safety trip * Shaver points in all bathrooms.

WATER SYSTEM * Water tank totalling 141 gallons (639 litres) plus 16-gallon (73 litres) hot water calorifier * Water heated by engine and 240v immersion heater * Automatic water pump with filter * Main circuit breaker at switch panel * Water level gauge * Deck filler * Freshwater vacuflush WC system with 51 gallons (233 litres) holding tank, contents gauge and electric overboard discharge with manual back-up system as well as dockside discharge system. **FIRE EXTINGUISHERS** * Automatic fire extinguisher in engine room with manual override * Hand-operated fire extinguishers (5) in owner's stateroom, port and forward guest cabins, galley and helm position. **BILGE PUMPS** * Automatic electric bilge pumps (with manual override) in the engine room, forward accommodation and aft lazarette (7 in all) * High capacity manual bilge pump with valve system and suction points in same areas.

POWER AND DRIVE SYSTEMS * Cockpit sole engine-room access hatch with gas strut support and separate engine room access from lazarette * Engine room soundproofed * High-volume air intakes * Engine room extractor fan with electronic time delay * Engine exhaust silencers and water-cooled exhausts * Engine beds integrally moulded with hull for strength and vibration absorption * Forward and aft engine-room bulkheads integrally bonded * Engines flexibly mounted * Automatic fire extinguisher with remote override control * Automatic and manual bilge pumps * Engine-room lighting * Propeller shafts in Temet * 4-bladed S class propellers in nickel aluminium bronze * High-speed balanced rudders * Cathodic protection for a stern gear * Stern gear, engines, fuel tank fillers, etc all electrically bonded * Hydraulic steering system with power assistance * Single-lever electronic engine controls * Bow thruster (11hp) * Freshwater supply point in the engine room

Deep V hull with moulded spray rails and incorporating propeller tunnels for improved propulsive efficiency and reduced draft * Hand-laid GRP construction with isophthalic gelcoat backed by initial lay-up of powder-bound matt and isophthalic resin for protection against osmosis * Integrally bonded girder-stiffening system * Standard finish white, navy blue or slate blue high-gloss gelcoat for hull topsides, white coachroof and hull bottom, hull antifouled to waterline * GRP/ balsa core/PVC foam sandwich construction for deck and superstructure for strength and high-thermal insulation * Moulded non-slip surfaces on side decks * Hull antifouled.

* Reversible electric anchor winch (2000W) with foredeck and helm position controls * Self-stowing (25kg) Delta anchor with 60-metre chain * Bow rope storage locker and anchor wash facility * Stemhead roller with automatic anchor launch and retrieve * Stainless steel bow, stern and spring cleats (8) * Stainless steel pulpit and guardrails * Two electric stern line winches * Stainless steel coachroof handrails * Coachroof lockers for fender storage * Forecabin hatch * Saloon hatch * PVC rubbing band with stainless steel insert * Full set of IMCO navigation lights * Riding light * Searchlight with remote control * Twin electric horns * Fuel and water fillers * Electro-hydraulic telescopic passerelle (2.9m) with remote control. **COCKPIT** * Teak decking * Self-draining U-shaped seating/dining area to starboard with table and with L-shaped seat to port * Cockpit wet bar with sink, top-loading refrigerator, icemaker, electric BBQ and storage * Twin sunbeds aft * Two storage garages for dinghy/wetbike and general stowage with electro-hydraulic aft doors and electric winch system for dinghy and wetbike retrieval * Life raft storage * Access hatch to lazarette stowage space and to optional crew cabin * 220/240v shore support inlet in locker * Stowage lockers * Folding cover for forward part of cockpit with bimini facility, or

optionally available electrically operated sliding roof section over forward area of cockpit (from control position forward to cockpit dining area) with cover with zip door and window to aft part of cockpit * Stainless steel grabrails * Radar arch * Cockpit lighting * Cockpit door leading to after deck and to integral bathing platform with hot and cold transom shower, foldaway swimming ladder and teak decking * Extension speakers from saloon hi-fi.

Исключения

При продаже яхты исключаются личные вещи владельца.

Отказ от ответственности

Компания предоставляет описание судна или яхты добросовестно, но не может гарантировать точность этой информации, а также не ручается за техническое состояние. Покупатель должен проинструктировать своих агентов или оценщиков исследовать представленную информацию более подробно, по собственному желанию. Продажа судна или яхты, изменение цены или снятие с продажи будет происходить без предварительного уведомления.

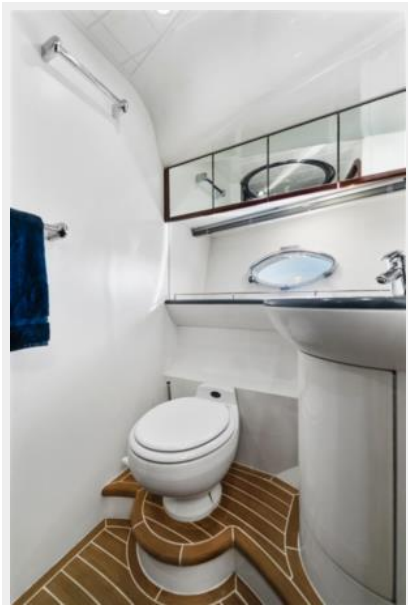
ФОТОГРАФИИ



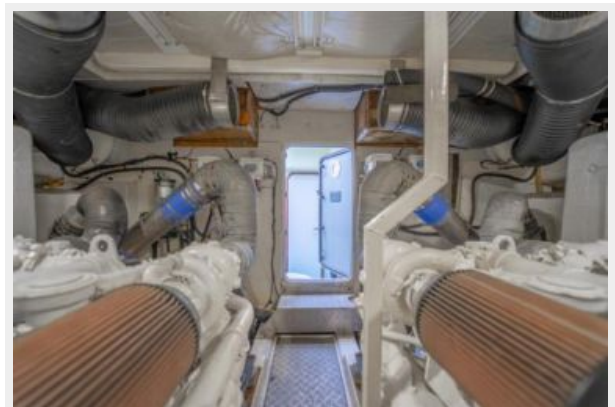


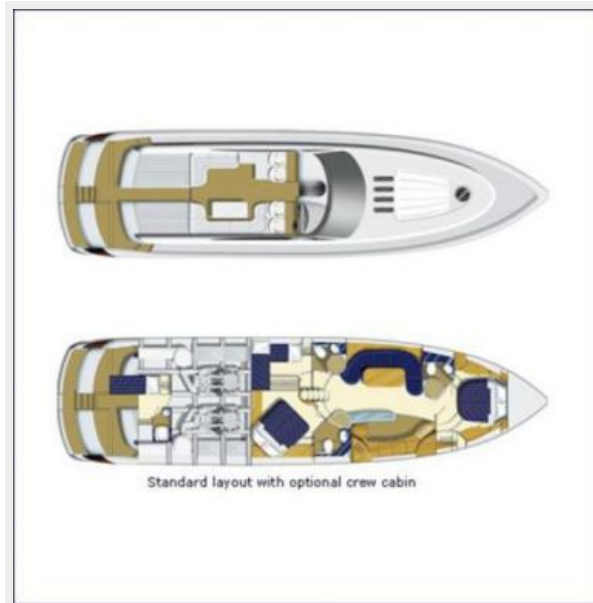












КОНТАКТЫ

Андрей Шестаков (Andrey Shestakov) – ведущий яхтенный брокер отдела продаж яхт и судов компании Shestakov Yacht Sales Inc. Официальный представитель Shestakov Yacht Sales Inc. для русскоговорящих клиентов в центральном офисе компании в Майами/Форт Лодердейл/Флорида/США.

Контактная информация

Email: andrey@shestakovyachtsales.com

Web: shestakovyachtsales.com

Телефоны

Краснодарский край: **+7(918)465-66-44**

США, Майами, Флорида: **+1(954)274-4435**

Время работы

Понедельник – Суббота: **9:00 - 21:00**
EDT

Воскресенье: **Закрето**

Адрес



Harbour Towne Marina, 850 NE 3rd St,
STE 213, Dania, FL 33004