

NEGU — HATTERAS



Builder: HATTERAS

Year Built: 2016

Model: Motor Yacht

Price: PRICE ON APPLICATION

Location: United States

LOA: 60' 11" (18.57m)

Beam: 18' 2" (5.54m)

Max Draft: 4' 6" (1.37m)

Cruise Speed: 24 Kts. (28 MPH)

Max Speed: 27 Kts. (31 MPH)

Our experienced yacht broker, Andrey Shestakov, will help you choose and buy a yacht that best suits your needs **NEGU — HATTERAS** from our catalogue. Presently, at Shestakov Yacht Sales Inc., we have a wide variety of yachts available on our sale's list. We also work in close contact with all the big yacht manufacturers from all over the world.

If you would like to buy a yacht **NEGU — HATTERAS** or would like help answering any questions concerning purchasing, selling or chartering a yacht, please call **+1(954)274-4435**

TABLE OF CONTENTS

TABLE OF CONTENTS	2
SPECIFICATIONS	5
Basic Information	5
Dimensions	5
Speed, Capacities and Weight	5
Accommodations	5
Hull and Deck Information	5
Engine Information	6
DETAILED INFORMATION	7
Vessel Walkthrough	7
Recent Services	7
Highlights	7
Exterior	9
Aft Deck	9
Salon	9
Galley/Dinette	10
Lower Companionway	10
Master Stateroom	10
Master Head	10
VIP/Bow Stateroom	11
Port Stateroom	11
Guest Head	11
Flybridge	11
Helm/Electronics	12
Engine Room	12
Exclusions	13
Exclusions	13
Disclaimer	13

PHOTOS	14
03-60Hatteras	14
05-IMG_0231	14
11-IMG_0273	14
12-IMG_0280	14
20-IMG_4046_7_8	14
21-IMG_4052_3_4	14
16-IMG_4028_29_30	15
17-IMG_4034_5_6	15
31-IMG_4118_19_20	15
29-IMG_4109_10_11	15
30-IMG_4112_3_4	15
32-IMG_4127_8_9	15
71-IMG_4397_8_9	16
67-IMG_4379_80_81	16
64-IMG_4358_59_60	16
68-IMG_4382_3_4	16
66-IMG_4373_4_5	16
47-IMG_4265_6_7	16
45-IMG_4241_2_3	17
70-IMG_4391_2_3	17
46-IMG_4259_60_61	17
61-IMG_4340_1_2	17
62-IMG_4343_4_5	18
63-IMG_4346_7_8	18
34-IMG_4160_1_2	18
48-IMG_4277_8_9	18
35-IMG_4163_4_5	19
37-IMG_4172_3_4	19

43-IMG_4223_4_5	19
44-IMG_4235_6_7	19
41-IMG_4208_09_10	20
42-IMG_4211_2_3	20
39-IMG_4196_7_8	20
40-IMG_4202_3_4	20
25-IMG_4082_3_4	20
27-IMG_4091_2_3	20
53-IMG_4301_2_3	21
55-IMG_4313_4_5	21
51-IMG_4292_3_4	21
52-IMG_4295_6_7	21
57-IMG_4325_6_7	21
56-IMG_4319_20_21	21
58-IMG_4328_29_30	22
59-IMG_4331_2_3	22
60-IMG_4334_5_6	22
CONTACTS	23
Contact details	23
Telephones	23
Office hours	23
Address	23

SPECIFICATIONS

Basic Information

Category: Motor Yacht

Model Year: 2017

Year Built: 2016

Country: United States

Dimensions

LOA: 60' 11" (18.57m)

Beam: 18' 2" (5.54m)

Max Draft: 4' 6" (1.37m)

Speed, Capacities and Weight

Cruise Speed: 24 Kts. (28 MPH)

Max Speed: 27 Kts. (31 MPH)

Gross Tonnage: 44 Pounds

Water Capacity: 250 Gallons

Holding Tank: 100 Gallons

Fuel Capacity: 1200 Gallons

Accommodations

Total Cabins: 3

Total Berths: 4

Sleeps: 6

Total Heads: 2

Hull and Deck Information

Hull Material: Fiberglass

Hull Color: White

Hull Designer: Hatteras

Exterior Designer: Hatteras

Interior Designer: Hatteras

Engine Information

Engines: 2

Manufacturer: Caterpillar

Model: C-18

Engine Type: Inboard

Fuel Type: Diesel

DETAILED INFORMATION

Vessel Walkthrough

NEGU is a 2017 Hatteras 60 Motor Yacht that is equipped with many Hatteras upgrades and custom items from the standard vessel. This vessel offers three staterooms and two heads with the master being full beam and mid-ship. She is powered by Twin Caterpillar C-18 Engines at 1135 hp with 1,083 hours. Some of the upgrades which make this vessel so special include bow and stern thrusters, dual SeaKeeper Gyro Stabilizers, and a hydraulic swim platform. **NEGU** has the new exterior mid-ship hull windows and teak flooring on the aft deck. This aft area is complimented by custom underwater lights. The aft deck is very spacious with half moon seating and high gloss table which allows for two chairs to be positioned stern facing. Just forward of the aft deck is a stainless sliding door that leads to the salon. This area feels large in size due to its 18' beam which allows for a custom L-Shaped couch to port and a club chair to the starboard side. This includes upgraded carpet with a walnut boarding running into the galley as you make your way forward. The custom built dinette table allows for six or more guests for entertainment and the galley is positioned to the starboard. As you make your way down the stairs into the lower companionway, there are three staterooms and two heads making living comfortable and accessible for its guests. **NEGU** has a bridge to dream about. With dual helm seating and a Kenyon grill on the aft bridge, it makes for a perfect vessel to captain and entertain. It includes state of the art, upgraded electronics, including a yacht controller and XM Weather radar making it easier to navigate. **NEGU** is available for viewing in Fort Lauderdale, FL.

Recent Services

- CAT 1,000 Hour Service – 4/2021
- CAT Annual Service – 4/2021
- Generator Annual Service - 3/2021
- Seakeepers Serviced - 1/2021
- Service & descale all 6 HVAC units – 4/2021
- All Exterior Upholstery Cleaned – 4/2021
- Aft Deck Teak Cleaned – 4/2021
- Bottom Job - 4/2021
- Prop Speed – 4/2021
- Cutlass Bearings - 4/2021

Highlights

- T-CAT C-18 1135HP Engines with 1,083 Hours Each as of 3/2021
- 21KW Onan Generator with 1,828 hours as of 3/2021
- 2004 Novurania Tender w/ Yamaha Engine at 50HP

- Bow and Stern Thrusters
- **Yacht Controller**
- **Dual SeaKeeper Gyro Stabilizers**
- **Hydraulic Swim Platform**
- AquaWhisper Pro Watermaker 900 GPD
- (2) Ea. Underwater Lights
- **New** Covers for ALL Upholstery
- **New** Incline Added to Bow Loungers
- **New** Aft Deck TV
- Teak Flooring on Aft Deck
- Tide Ride Sea Stairs for Boarding on Aft Deck
- High Gloss Table by Release Marine on Aft Deck
- (2) ea. Teak Deck Chairs on Aft Deck
- Carpet with Walnut Border in Salon
- Salon Club Chair
- Custom Walnut Wood in Salon and Galley
- Wine Cooler in Galley
- Dinette Table by Release Marine
- Custom Window Tint in Main Cabin Area
- Custom Throw Pillows in Salon, Master/VIP/Port Staterooms
- Samsung Blu-Ray Player in Salon
- Samsung TV in Salon, Master/VIP/Port Staterooms
- King System #4 Mattress with Sheet Set in Master Stateroom
- Oceanair Blinds in Master Stateroom
- Bose Upgraded Stereo System in Master Stateroom and Salon
- Upgraded Walk-In Shower with Glass Enclosure in Master Head
- Calacatta Gold Countertop in Master and Guest Head
- Shower Seat in Master Head
- Fusion Upgraded Stereo System in VIP Stateroom, Port Stateroom, & Helm
- Queen System #4 Mattress with Sheet Set in VIP Stateroom
- Twin System #3 Mattresses with Sheet Sets in Port Stateroom
- Audio Speakers in Port Stateroom
- Four Sided Seacrylic Curtain Enclosure
- New Chair Added Next to Helm on Flybridge
- TV on Flybridge
- U-Line Refrigerator and Ice Maker on Flybridge
- (2) ea. High Gloss Tables by Release Marine on Flybridge
- **New** Garmin Autopilot Remote Control
- **New** Apple TV and Satellite TV
- Wave WiFi w/ Cellular Intranet
- **New** XM Music and Weather Radar
- **New** Freezer in Engine Room
- **New** Additional Storage Shelving in Engine Room

Exterior

- Hydraulic Swim Platform: **UPGRADE**
- **New** Covers for ALL Upholstery : **UPGRADE**
- **New** Incline Added to Bow Loungers : **UPGRADE**
- (2) Each Underwater Lights: **UPGRADE**
- Isophthalic/NPG gel coat, exterior layer in cloud white
- Hull and superstructure painted w/a premium linear polyester/polyurethane coating for improved cosmetics & increased durability
- **New** Polymer/copper based anti-fouling bottom paint
- Decks, non-skid surface polyurethane paint w/polymeric beads
- Welded & polished stainless-steel anchor chute and roller
- 60 lbs. plow anchor
- Bow sun loungers - Adjustable
- Michigan Wheels Propellers with 5 Blades
- Windlass by Maxwell

Aft Deck

- **New** TV: **UPGRADE**
- Teak Flooring: **UPGRADE**
- Tide Ride Sea Chairs for Boarding: **UPGRADE**
- High Gloss Table by Release Marine: **UPGRADE**
- (2) ea. Teak Deck Chairs on Aft Deck: **UPGRADE**
- Molded bench seating w/cushions & cover
- (2) ea. Boarding Gates
- Freshwater wash down outlet

Salon

- Carpet with Walnut Border: **UPGRADE**
- Custom High Gloss Cocktail Table by Release Marine: **UPGRADE**
- Club Chair: **UPGRADE**
- Custom Walnut Wood: **UPGRADE**
- L-Shaped sofa w/ chaise and storage, port side
- End table
- Samsung 40" LED TV & Blu-Ray player, starboard side
- Bose Lifestyle Entertainment System
- Fixed frameless windows w/ tinted safety glass
- Welded & polished stainless-steel sliding door to aft deck
- Oceanair Blinds

Galley/Dinette

- Custom Walnut Interior Wood: **UPGRADE**
- U-Line Wine Cooler: **UPGRADE**
- U-Line Ice Maker: **UPGRADE**
- Dinette Table by Release Marine: **UPGRADE**
- Custom Window Tint: **UPGRADE**
- Island with Sink
- Pull-Down, Polished Chrome Faucet
- Wood Flooring
- Miele Four Burner Cook Top and Oven
- Separate Jenn-Air Refrigerator and Freezer Drawers
- Miele Dishwasher
- Sharp Microwave/Convection Oven
- Garbage Disposal
- Pantograph Door with Lock, Starboard

Lower Companionway

- Whirlpool Washer and Dryer
- Storage Cabinets Outboard
- Lighted Stairway

Master Stateroom

- King System #4 Mattress with Sheet Set: **UPGRADE**
- Oceanair Blinds: **UPGRADE**
- King Sized Berth with Upholstered Headboard and Cedar Lined Storage Underneath
- (2) ea. Nightstands (Port & Starboard)
- Dresser
- Vanity with Stool
- Samsung 32" LED TV
- Cinemate GS Series II Entertainment System
- (2) ea. Large Cedar Lined Closets with Automatic Light (Port & Starboard)
- DC LED Lighting
- Custom Hull Side Windows

Master Head

- Custom Calacatta Gold Counter Top: **UPGRADE**
- Walk-In Shower with Glass Enclosure: **UPGRADE**

- Full Vanity with Sink and Large Mirror
- Storage cabinets Below
- Hardwood baseboards
- Towel bar
- Freshwater toilet

VIP/Bow Stateroom

- Queen System #4 Mattress with Sheet Set: **UPGRADE**
- Queen Sized Berth with Upholstered Headboard and Cedar-Lined Storage Underneath
- Cedar-Lined Closet with Automatic Light
- 24" Jensen LED TV
- Clarion DVD/CD player
- Private Access to Head
- Screened Overhead Hatch with Privacy Cover

Port Stateroom

- Twin System #3 Mattresses with Sheet Sets: **UPGRADE**
- Cedar-Lined Closet with Automatic Light
- 24" Jensen LED TV w/ DVD player
- Polk Audio Speakers
- Criss-Cross Twin Berths with Storage Under Lower Berth

Guest Head

- Custom Calacatta Gold Counter Top: **UPGRADE**
- Sink
- Storage cabinet with Mirror Above Sink
- Hardwood Baseboards
- Towel Bar
- Freshwater Toilet
- Walk-In Shower

Flybridge

- Covers for L-Shaped Couch: **UPGRADE**
- U-Line Refrigerator and Ice Maker: **UPGRADE**
- Four Sided Seacrylic Curtain Enclosure: **UPGRADE**
- Large L-Shaped Lounge with Cushions and Storage Underneath: **UPGRADE**

- Kenyon Outdoor Grill on Aft Deck Bridge: **UPGRADE**
- TV: **UPGRADE**
- (2) ea. High Gloss Tables by Release Marine: **UPGRADE**
- Dual Pompanette Helm Chairs
- Framed Glass Windshield

Helm/Electronics

- Yacht Controller: **UPGRADE**
- **New** Apple TV and Satellite TV: **UPGRADE**
- Wave WiFi w/ Cellular Intranet: **UPGRADE**
- **New** XM Music and Weather Radar: **UPGRADE**
- **New** Garmin Autopilot Remote Control: **UPGRADE**
- Helm TV with (3) ea. Direct TV Receivers
- Framed Glass Windshield
- Dual Helm Chairs
- (2) ea. Garmin 8215 15" Touchscreen GPS Screens
- Detailed coverage of East coast of US, FL Peninsula, FL Keys, Bahamas, Turks & Caicos Islands
- Garmin GSD-24 Digital Black Box Network Sounder
- Garmin B260 Bronze Transducer
- 1Kw Thru-Hull
- Garmin GMS 10 Network Hub
- Garmin GMR 604XHD 6 KW Marine Radar with 4' Open Array
- KVH Tracvision HD7 Satellite
- (3) HDTV DirecTV Receivers
- Garmin GXM52 XM Satellite Weather Antenna
- Garmin GHP20 Autopilot System
- Garmin GC10 Marine Camera on Aft Deck and Engine Room, view on Garmin display
- (2) ea. 24 volt banks of heavy duty, 12 volt marine batteries
- Tin coated wiring w/ insulation, labeled, and color coded
- 240 volt automatic battery charger, 50/60Hz
- Automatic battery paralleling system w/switch at helm console
- (2) ea. 240 volt, 50 amp, retractable shore cords, both w/over current protection
- (2) ea. polarization transformers w/boost function
- DC LED lights

Engine Room

- T-CAT C-18 1135HP Engines with 1,083 Hours Each as of 3/2021: **UPGRADE**
- 21KW Onan Generator with 1,828 hours as of 3/2021: **UPGRADE**
- Dual SeaKeeper Gyro Stabilizers: **UPGRADE**

- Bow and Stern Thrusters: **UPGRADE**
- AquaWhisper Pro Watermaker 900 GPD: **UPGRADE**
- **New** Freezer: **UPGRADE**
- **New** Additional Storage Shelving: **UPGRADE**
- 24 volt DC bilge and sump pumps: two at 2000 GPD & three at 3700 GPD, w/heavy duty float switches and protective guards
- (3) Ea. Garmin Cameras
- 230 volt AC 20 gallon electric water heater
- Pressurized freshwater pump
- Electric fuel priming pumps, engines
- Engine start/stop switches & hour meter
- Mastervolt House Batteries, Battery Charger
- Jefferson Transformer
- Oil Change Pump
- Bow Thruster Battery Charger by Pro Mariner
- Fan by Delta T

Exclusions

- All Owner's Personal Items

Exclusions

Owner's personal belongings.

Disclaimer

The Company offers the details of this vessel or yacht in good faith but cannot guarantee or warrant the accuracy of this information nor warrant the condition of the vessel. A buyer should instruct his representatives, agents, or his surveyors, to investigate such details as the buyer desires validated. This vessel or yacht is offered subject to prior sale, price change, or withdrawal without notice.

PHOTOS

03-60Hatteras



05-IMG_0231



11-IMG_0273



12-IMG_0280



20-IMG_4046_7_8



21-IMG_4052_3_4



16-IMG_4028_29_30



17-IMG_4034_5_6



31-IMG_4118_19_20



29-IMG_4109_10_11



30-IMG_4112_3_4



32-IMG_4127_8_9



71-IMG_4397_8_9



67-IMG_4379_80_81



68-IMG_4382_3_4



64-IMG_4358_59_60



66-IMG_4373_4_5



47-IMG_4265_6_7



70-IMG_4391_2_3



45-IMG_4241_2_3



46-IMG_4259_60_61



61-IMG_4340_1_2



63-IMG_4346_7_8



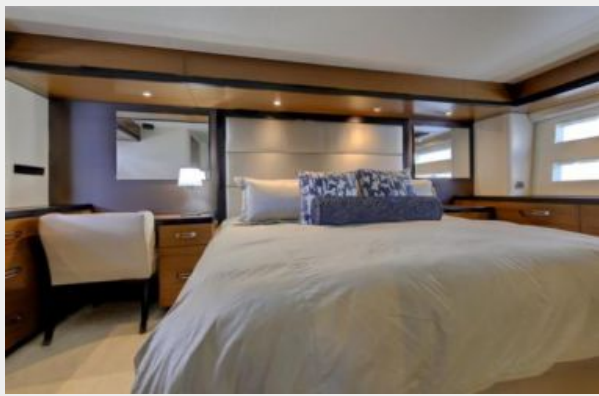
62-IMG_4343_4_5



34-IMG_4160_1_2



48-IMG_4277_8_9



35-IMG_4163_4_5



37-IMG_4172_3_4



43-IMG_4223_4_5



44-IMG_4235_6_7



41-IMG_4208_09_10



42-IMG_4211_2_3



39-IMG_4196_7_8



40-IMG_4202_3_4



25-IMG_4082_3_4



27-IMG_4091_2_3



53-IMG_4301_2_3



55-IMG_4313_4_5



51-IMG_4292_3_4



52-IMG_4295_6_7



56-IMG_4319_20_21



57-IMG_4325_6_7



58-IMG_4328_29_30



59-IMG_4331_2_3



60-IMG_4334_5_6



CONTACTS

Andrey Shestakov, leading yacht broker of the sales department of Shestakov Yacht Sales Inc. Shestakov Yacht Sales Inc., the official representative of the Miami/Fort Lauderdale FL headquarters.

Contact details

Email: andrey@shestakovyachtsales.com

Web: shestakovyachtsales.com/en/

Telephones

USA: +1(954)274-4435

Office hours

Monday – Saturday: **9:00 - 21:00** EDT

Sunday: **closed**

Address



Harbour Towne Marina, 850 NE 3rd St,
STE 213, Dania, FL 33004