

## NEGU — HATTERAS



**Судостроитель:** HATTERAS

**Год постройки:** 2016

**Модель:** Моторная яхта

**Цена:** **ЦЕНА ЯХТЫ ПО ЗАПРОСУ**

**Местонахождение:** United States

**Длина общая:** 60' 11" (18.57m)

**Ширина:** 18' 2" (5.54m)

**Макс. осадка:** 4' 6" (1.37m)

**Крейс. скорость:** 24 Kts. (28 MPH)

**Макс. скорость:** 27 Kts. (31 MPH)

Купить **NEGU — HATTERAS** а также выбрать подходящую вам яхту из нашего каталога яхт вам поможет опытный яхтенный брокер Андрей Шестаков. На сегодняшний день компания **Shestakov Yacht Sales Inc.** имеет большое количество яхт в собственном списке продаж, а также тесно сотрудничает со всеми крупными яхтенными производителями по всему миру.

Для того чтобы купить яхту **NEGU — HATTERAS** а также проконсультироваться по любому вопросу связанному с покупкой, продажей, чартером яхт позвоните по телефону **+7(918)465-66-44**.

# ОГЛАВЛЕНИЕ

ОГЛАВЛЕНИЕ	2
ХАРАКТЕРИСТИКИ	5
Основная информация	5
Размеры	5
Скорость, вместимость и масса	5
Размещение	5
Корпус и палуба	5
Информация о двигателе	6
ПОДРОБНОЕ ОПИСАНИЕ	7
Vessel Walkthrough	7
Recent Services	7
Highlights	7
Exterior	9
Aft Deck	9
Salon	9
Galley/Dinette	10
Lower Companionway	10
Master Stateroom	10
Master Head	10
VIP/Bow Stateroom	11
Port Stateroom	11
Guest Head	11
Flybridge	11
Helm/Electronics	12
Engine Room	12
Exclusions	13
Исключения	13
Отказ от ответственности	13

ФОТОГРАФИИ	14
03-60Hatteras	14
05-IMG_0231	14
11-IMG_0273	14
12-IMG_0280	14
20-IMG_4046_7_8	14
21-IMG_4052_3_4	14
16-IMG_4028_29_30	15
17-IMG_4034_5_6	15
31-IMG_4118_19_20	15
29-IMG_4109_10_11	15
30-IMG_4112_3_4	15
32-IMG_4127_8_9	15
71-IMG_4397_8_9	16
67-IMG_4379_80_81	16
64-IMG_4358_59_60	16
68-IMG_4382_3_4	16
66-IMG_4373_4_5	16
47-IMG_4265_6_7	16
45-IMG_4241_2_3	17
70-IMG_4391_2_3	17
46-IMG_4259_60_61	17
61-IMG_4340_1_2	17
62-IMG_4343_4_5	18
63-IMG_4346_7_8	18
34-IMG_4160_1_2	18
48-IMG_4277_8_9	18
35-IMG_4163_4_5	19
37-IMG_4172_3_4	19

---

43-IMG_4223_4_5	19
44-IMG_4235_6_7	19
41-IMG_4208_09_10	20
42-IMG_4211_2_3	20
39-IMG_4196_7_8	20
40-IMG_4202_3_4	20
25-IMG_4082_3_4	20
27-IMG_4091_2_3	20
53-IMG_4301_2_3	21
55-IMG_4313_4_5	21
51-IMG_4292_3_4	21
52-IMG_4295_6_7	21
57-IMG_4325_6_7	21
56-IMG_4319_20_21	21
58-IMG_4328_29_30	22
59-IMG_4331_2_3	22
60-IMG_4334_5_6	22
<b>КОНТАКТЫ</b>	<b>23</b>
Контактная информация	23
Телефоны	23
Время работы	23
Адрес	23

# ХАРАКТЕРИСТИКИ

## Основная информация

Тип судна: Моторная яхта

Модельный год: 2017

Год постройки: 2016

Страна: United States

## Размеры

Длина общая: 60' 11" (18.57m)

Ширина: 18' 2" (5.54m)

Макс. осадка: 4' 6" (1.37m)

## Скорость, вместимость и масса

Крейс. скорость: 24 Kts. (28 MPH)

Макс. скорость: 27 Kts. (31 MPH)

Чистый вес: 44 Pounds

Вместимость воды: 250 Gallons

Вместимость сточного бака: 100 Gallons Объем топливного бака: 1200 Gallons

## Размещение

Всего кают: 3

Всего коек: 4

Спальные места: 6

Всего ком. состава: 2

## Корпус и палуба

Материал корпуса: Fiberglass

Цвет корпуса: White

Дизайнер корпуса: Hatteras

Дизайнер экстерьера: Hatteras

Дизайнер интерьера: Hatteras

## Информация о двигателе

---

**Двигатели:** 2

**Производитель:** Caterpillar

**Модель:** C-18

**Тип двигателя:** Inboard

**Тип топлива:** Diesel

---

# ПОДРОБНОЕ ОПИСАНИЕ

---

## Vessel Walkthrough

---

**NEGU** is a 2017 Hatteras 60 Motor Yacht that is equipped with many Hatteras upgrades and custom items from the standard vessel. This vessel offers three staterooms and two heads with the master being full beam and mid-ship. She is powered by Twin Caterpillar C-18 Engines at 1135 hp with 1,083 hours. Some of the upgrades which make this vessel so special include bow and stern thrusters, dual SeaKeeper Gyro Stabilizers, and a hydraulic swim platform. **NEGU** has the new exterior mid-ship hull windows and teak flooring on the aft deck. This aft area is complimented by custom underwater lights. The aft deck is very spacious with half moon seating and high gloss table which allows for two chairs to be positioned stern facing. Just forward of the aft deck is a stainless sliding door that leads to the salon. This area feels large in size due to its 18' beam which allows for a custom L-Shaped couch to port and a club chair to the starboard side. This includes upgraded carpet with a walnut boarding running into the galley as you make your way forward. The custom built dinette table allows for six or more guests for entertainment and the galley is positioned to the starboard. As you make your way down the stairs into the lower companionway, there are three staterooms and two heads making living comfortable and accessible for its guests. **NEGU** has a bridge to dream about. With dual helm seating and a Kenyon grill on the aft bridge, it makes for a perfect vessel to captain and entertain. It includes state of the art, upgraded electronics, including a yacht controller and XM Weather radar making it easier to navigate. **NEGU** is available for viewing in Fort Lauderdale, FL.

---

## Recent Services

---

- CAT 1,000 Hour Service – 4/2021
- CAT Annual Service – 4/2021
- Generator Annual Service - 3/2021
- Seakeepers Serviced - 1/2021
- Service & descale all 6 HVAC units – 4/2021
- All Exterior Upholstery Cleaned – 4/2021
- Aft Deck Teak Cleaned – 4/2021
- Bottom Job - 4/2021
- Prop Speed – 4/2021
- Cutlass Bearings - 4/2021

---

## Highlights

---

- T-CAT C-18 1135HP Engines with 1,083 Hours Each as of 3/2021
- 21KW Onan Generator with 1,828 hours as of 3/2021
- 2004 Novurania Tender w/ Yamaha Engine at 50HP

- Bow and Stern Thrusters
- **Yacht Controller**
- **Dual SeaKeeper Gyro Stabilizers**
- **Hydraulic Swim Platform**
- AquaWhisper Pro Watermaker 900 GPD
- (2) Ea. Underwater Lights
- **New** Covers for ALL Upholstery
- **New** Incline Added to Bow Loungers
- **New** Aft Deck TV
- Teak Flooring on Aft Deck
- Tide Ride Sea Stairs for Boarding on Aft Deck
- High Gloss Table by Release Marine on Aft Deck
- (2) ea. Teak Deck Chairs on Aft Deck
- Carpet with Walnut Border in Salon
- Salon Club Chair
- Custom Walnut Wood in Salon and Galley
- Wine Cooler in Galley
- Dinette Table by Release Marine
- Custom Window Tint in Main Cabin Area
- Custom Throw Pillows in Salon, Master/VIP/Port Staterooms
- Samsung Blu-Ray Player in Salon
- Samsung TV in Salon, Master/VIP/Port Staterooms
- King System #4 Mattress with Sheet Set in Master Stateroom
- Oceanair Blinds in Master Stateroom
- Bose Upgraded Stereo System in Master Stateroom and Salon
- Upgraded Walk-In Shower with Glass Enclosure in Master Head
- Calacatta Gold Countertop in Master and Guest Head
- Shower Seat in Master Head
- Fusion Upgraded Stereo System in VIP Stateroom, Port Stateroom, & Helm
- Queen System #4 Mattress with Sheet Set in VIP Stateroom
- Twin System #3 Mattresses with Sheet Sets in Port Stateroom
- Audio Speakers in Port Stateroom
- Four Sided Seacrylic Curtain Enclosure
- New Chair Added Next to Helm on Flybridge
- TV on Flybridge
- U-Line Refrigerator and Ice Maker on Flybridge
- (2) ea. High Gloss Tables by Release Marine on Flybridge
- **New** Garmin Autopilot Remote Control
- **New** Apple TV and Satellite TV
- Wave WiFi w/ Cellular Intranet
- **New** XM Music and Weather Radar
- **New** Freezer in Engine Room
- **New** Additional Storage Shelving in Engine Room



---

## Exterior

---

- Hydraulic Swim Platform: **UPGRADE**
- **New** Covers for ALL Upholstery : **UPGRADE**
- **New** Incline Added to Bow Loungers : **UPGRADE**
- (2) Each Underwater Lights: **UPGRADE**
- Isophthalic/NPG gel coat, exterior layer in cloud white
- Hull and superstructure painted w/a premium linear polyester/polyurethane coating for improved cosmetics & increased durability
- **New** Polymer/copper based anti-fouling bottom paint
- Decks, non-skid surface polyurethane paint w/polymeric beads
- Welded & polished stainless-steel anchor chute and roller
- 60 lbs. plow anchor
- Bow sun loungers - Adjustable
- Michigan Wheels Propellers with 5 Blades
- Windlass by Maxwell

---

## Aft Deck

---

- **New** TV: **UPGRADE**
- Teak Flooring: **UPGRADE**
- Tide Ride Sea Chairs for Boarding: **UPGRADE**
- High Gloss Table by Release Marine: **UPGRADE**
- (2) ea. Teak Deck Chairs on Aft Deck: **UPGRADE**
- Molded bench seating w/cushions & cover
- (2) ea. Boarding Gates
- Freshwater wash down outlet

---

## Salon

---

- Carpet with Walnut Border: **UPGRADE**
- Custom High Gloss Cocktail Table by Release Marine: **UPGRADE**
- Club Chair: **UPGRADE**
- Custom Walnut Wood: **UPGRADE**
- L-Shaped sofa w/ chaise and storage, port side
- End table
- Samsung 40" LED TV & Blu-Ray player, starboard side
- Bose Lifestyle Entertainment System
- Fixed frameless windows w/ tinted safety glass
- Welded & polished stainless-steel sliding door to aft deck
- Oceanair Blinds

---

## Galley/Dinette

---

- Custom Walnut Interior Wood: **UPGRADE**
- U-Line Wine Cooler: **UPGRADE**
- U-Line Ice Maker: **UPGRADE**
- Dinette Table by Release Marine: **UPGRADE**
- Custom Window Tint: **UPGRADE**
- Island with Sink
- Pull-Down, Polished Chrome Faucet
- Wood Flooring
- Miele Four Burner Cook Top and Oven
- Separate Jenn-Air Refrigerator and Freezer Drawers
- Miele Dishwasher
- Sharp Microwave/Convection Oven
- Garbage Disposal
- Pantograph Door with Lock, Starboard

---

## Lower Companionway

---

- Whirlpool Washer and Dryer
- Storage Cabinets Outboard
- Lighted Stairway

---

## Master Stateroom

---

- King System #4 Mattress with Sheet Set: **UPGRADE**
- Oceanair Blinds: **UPGRADE**
- King Sized Berth with Upholstered Headboard and Cedar Lined Storage Underneath
- (2) ea. Nightstands (Port & Starboard)
- Dresser
- Vanity with Stool
- Samsung 32" LED TV
- Cinemate GS Series II Entertainment System
- (2) ea. Large Cedar Lined Closets with Automatic Light (Port & Starboard)
- DC LED Lighting
- Custom Hull Side Windows

---

## Master Head

---

- Custom Calacatta Gold Counter Top: **UPGRADE**
- Walk-In Shower with Glass Enclosure: **UPGRADE**

- Full Vanity with Sink and Large Mirror
- Storage cabinets Below
- Hardwood baseboards
- Towel bar
- Freshwater toilet

---

## VIP/Bow Stateroom

---

- Queen System #4 Mattress with Sheet Set: **UPGRADE**
- Queen Sized Berth with Upholstered Headboard and Cedar-Lined Storage Underneath
- Cedar-Lined Closet with Automatic Light
- 24" Jensen LED TV
- Clarion DVD/CD player
- Private Access to Head
- Screened Overhead Hatch with Privacy Cover

---

## Port Stateroom

---

- Twin System #3 Mattresses with Sheet Sets: **UPGRADE**
- Cedar-Lined Closet with Automatic Light
- 24" Jensen LED TV w/ DVD player
- Polk Audio Speakers
- Criss-Cross Twin Berths with Storage Under Lower Berth

---

## Guest Head

---

- Custom Calacatta Gold Counter Top: **UPGRADE**
- Sink
- Storage cabinet with Mirror Above Sink
- Hardwood Baseboards
- Towel Bar
- Freshwater Toilet
- Walk-In Shower

---

## Flybridge

---

- Covers for L-Shaped Couch: **UPGRADE**
- U-Line Refrigerator and Ice Maker: **UPGRADE**
- Four Sided Seacrylic Curtain Enclosure: **UPGRADE**
- Large L-Shaped Lounge with Cushions and Storage Underneath: **UPGRADE**

- Kenyon Outdoor Grill on Aft Deck Bridge: **UPGRADE**
- TV: **UPGRADE**
- (2) ea. High Gloss Tables by Release Marine: **UPGRADE**
- Dual Pompanette Helm Chairs
- Framed Glass Windshield

---

## Helm/Electronics

---

- Yacht Controller: **UPGRADE**
- **New** Apple TV and Satellite TV: **UPGRADE**
- Wave WiFi w/ Cellular Intranet: **UPGRADE**
- **New** XM Music and Weather Radar: **UPGRADE**
- **New** Garmin Autopilot Remote Control: **UPGRADE**
- Helm TV with (3) ea. Direct TV Receivers
- Framed Glass Windshield
- Dual Helm Chairs
- (2) ea. Garmin 8215 15" Touchscreen GPS Screens
- Detailed coverage of East coast of US, FL Peninsula, FL Keys, Bahamas, Turks & Caicos Islands
- Garmin GSD-24 Digital Black Box Network Sounder
- Garmin B260 Bronze Transducer
- 1Kw Thru-Hull
- Garmin GMS 10 Network Hub
- Garmin GMR 604XHD 6 KW Marine Radar with 4' Open Array
- KVH Tracvision HD7 Satellite
- (3) HDTV DirecTV Receivers
- Garmin GXM52 XM Satellite Weather Antenna
- Garmin GHP20 Autopilot System
- Garmin GC10 Marine Camera on Aft Deck and Engine Room, view on Garmin display
- (2) ea. 24 volt banks of heavy duty, 12 volt marine batteries
- Tin coated wiring w/ insulation, labeled, and color coded
- 240 volt automatic battery charger, 50/60Hz
- Automatic battery paralleling system w/switch at helm console
- (2) ea. 240 volt, 50 amp, retractable shore cords, both w/over current protection
- (2) ea. polarization transformers w/boost function
- DC LED lights

---

## Engine Room

---

- T-CAT C-18 1135HP Engines with 1,083 Hours Each as of 3/2021: **UPGRADE**
- 21KW Onan Generator with 1,828 hours as of 3/2021: **UPGRADE**
- Dual SeaKeeper Gyro Stabilizers: **UPGRADE**

- Bow and Stern Thrusters: **UPGRADE**
- AquaWhisper Pro Watermaker 900 GPD: **UPGRADE**
- **New** Freezer: **UPGRADE**
- **New** Additional Storage Shelving: **UPGRADE**
- 24 volt DC bilge and sump pumps: two at 2000 GPD & three at 3700 GPD, w/heavy duty float switches and protective guards
- (3) Ea. Garmin Cameras
- 230 volt AC 20 gallon electric water heater
- Pressurized freshwater pump
- Electric fuel priming pumps, engines
- Engine start/stop switches & hour meter
- Mastervolt House Batteries, Battery Charger
- Jefferson Transformer
- Oil Change Pump
- Bow Thruster Battery Charger by Pro Mariner
- Fan by Delta T

## Exclusions

---

- All Owner's Personal Items

## Исключения

---

При продаже яхты исключаются личные вещи владельца.

## Отказ от ответственности

---

Компания предоставляет описание судна или яхты добросовестно, но не может гарантировать точность этой информации, а также не ручается за техническое состояние. Покупатель должен проинструктировать своих агентов или оценщиков исследовать представленную информацию более подробно, по собственному желанию. Продажа судна или яхты, изменение цены или снятие с продажи будет происходить без предварительного уведомления.

# ФОТОГРАФИИ

03-60Hatteras



05-IMG\_0231



11-IMG\_0273



12-IMG\_0280



20-IMG\_4046\_7\_8



21-IMG\_4052\_3\_4



16-IMG\_4028\_29\_30



17-IMG\_4034\_5\_6



31-IMG\_4118\_19\_20



29-IMG\_4109\_10\_11



30-IMG\_4112\_3\_4



32-IMG\_4127\_8\_9





71-IMG\_4397\_8\_9



67-IMG\_4379\_80\_81



68-IMG\_4382\_3\_4



64-IMG\_4358\_59\_60



66-IMG\_4373\_4\_5



47-IMG\_4265\_6\_7





70-IMG\_4391\_2\_3



45-IMG\_4241\_2\_3



46-IMG\_4259\_60\_61



61-IMG\_4340\_1\_2



63-IMG\_4346\_7\_8



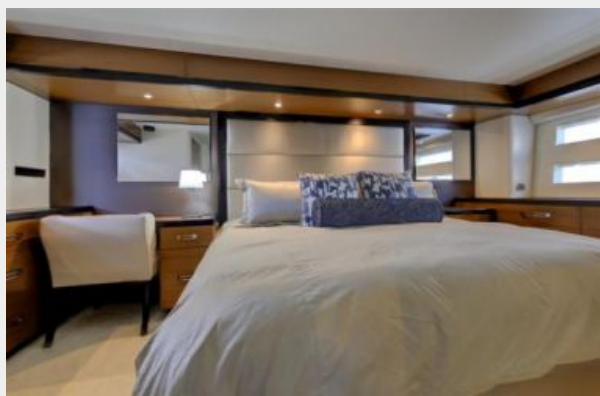
62-IMG\_4343\_4\_5



34-IMG\_4160\_1\_2



48-IMG\_4277\_8\_9



35-IMG\_4163\_4\_5



37-IMG\_4172\_3\_4



43-IMG\_4223\_4\_5



44-IMG\_4235\_6\_7



41-IMG\_4208\_09\_10



42-IMG\_4211\_2\_3



39-IMG\_4196\_7\_8



40-IMG\_4202\_3\_4



25-IMG\_4082\_3\_4



27-IMG\_4091\_2\_3





53-IMG\_4301\_2\_3



55-IMG\_4313\_4\_5



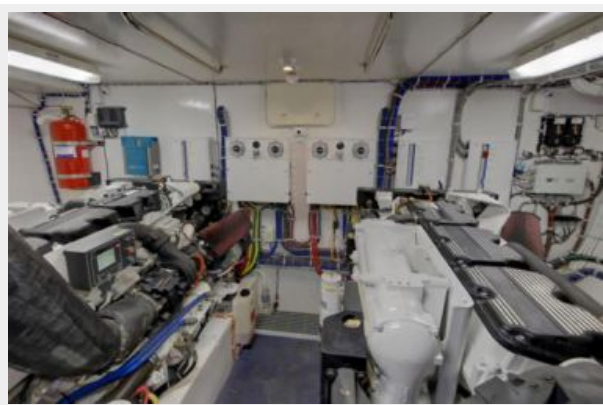
51-IMG\_4292\_3\_4



52-IMG\_4295\_6\_7



56-IMG\_4319\_20\_21



57-IMG\_4325\_6\_7



58-IMG\_4328\_29\_30



59-IMG\_4331\_2\_3



60-IMG\_4334\_5\_6



# КОНТАКТЫ

---

Андрей Шестаков (Andrey Shestakov) – ведущий яхтенный брокер отдела продаж яхт и судов компании Shestakov Yacht Sales Inc. Официальный представитель Shestakov Yacht Sales Inc. для русскоговорящих клиентов в центральном офисе компании в Майами/Форт Лодердейл/Флорида/США.

## Контактная информация

---

Email: [andrey@shestakovyachtsales.com](mailto:andrey@shestakovyachtsales.com)

Web: [shestakovyachtsales.com](http://shestakovyachtsales.com)

## Телефоны

---

Краснодарский край: **+7(918)465-66-44**

США, Майами, Флорида: **+1(954)274-4435**

## Время работы

---

Понедельник – Суббота: **9:00 - 21:00**  
EDT

Воскресенье: **Закрито**

## Адрес

---



Harbour Towne Marina, 850 NE 3rd St,  
STE 213, Dania, FL 33004