

## HUMBLE AND HUNGRY — PRESTIGE



**Судостроитель:** PRESTIGE

**Год постройки:** 2017

**Модель:** Моторная яхта

**Цена:** ЦЕНА ЯХТЫ ПО ЗАПРОСУ

**Местонахождение:** United States

**Длина общая:** 68' 0" (20.73m)

**Ширина:** 17' 6" (5.33m)

**Крейс. скорость:** 24 Kts. (28 MPH)

**Макс. скорость:** 29 Kts. (33 MPH)

Купить **HUMBLE AND HUNGRY — PRESTIGE** а также выбрать подходящую вам яхту из нашего каталога яхт вам поможет опытный яхтенный брокер Андрей Шестаков. На сегодняшний день компания Shestakov Yacht Sales Inc. имеет большое количество яхт в собственном списке продаж, а также тесно сотрудничает со всеми крупными яхтенными производителями по всему миру.

Для того чтобы купить яхту **HUMBLE AND HUNGRY — PRESTIGE** а также проконсультироваться по любому вопросу связанному с покупкой, продажей, чартером яхт позвоните по телефону **+7(918)465-66-44**.

# ОГЛАВЛЕНИЕ

ОГЛАВЛЕНИЕ	2
ХАРАКТЕРИСТИКИ	6
Основная информация	6
Размеры	6
Скорость, вместимость и масса	6
Размещение	6
Корпус и палуба	6
Информация о двигателе	7
ПОДРОБНОЕ ОПИСАНИЕ	8
Description	8
Walkthrough	8
Key Features	8
Factory Installed Options	8
Additional Options	9
North American Package	9
After Sale Installed Options	10
Standard Equipment	10
Salon	11
Lower Helm	11
Galley	11
Master Stateroom - On Deck Forward	12
Master Head Ensuite	12
VIP Stateroom - Midship	12
VIP Head	12
Guest Stateroom Port	13
Guest Stateroom Starboard	13
Guest Day Head	13
Crew / Captain Cabin and Head	13

Flybridge	14
Electrical	14
Mechanical Equipment	15
Engine Room	15
Cockpit	15
Decks	16
Hull	16
Standard Manuals	16
Исключения	16
Отказ от ответственности	17
<b>ФОТОГРАФИИ</b>	<b>18</b>
Profile 1	18
Profile 2	18
Aft View	18
Starboard Aft View	18
Aerial View	18
Flybridge 1	18
Flybridge 2	19
Bow View	19
Bow Sunpad 1	19
Bow Sunpad 2	19
Flybridge Helm 1	19
Flybridge Helm 2	19
Flybridge 3	20
Flybridge 4	20
Flybridge 5	20
Flybridge 6	20
Flybridge Aft Dining 1	20
Flybridge 7	20

Flybridge Aft Dining 2	21
Swim Platform SeaDoo 1	21
Swim Platform SeaDoo 2	21
Aft Deck and Stairs to FB	21
Aft Deck 1	21
Aft Deck 2	21
Entrance to Salon	22
Aft Deck 3	22
Galley Dinette 1	22
Dinette 1	22
Galley Dinette View Aft	22
Galley 1	22
Galley 2	23
Galley 3	23
Galley 4	23
Salon 1	23
Salon 2	23
Salon 3	23
Helm 1	24
Salon 4	24
Master Stateroom 1	24
Helm 2	24
Master Stateroom 2	24
Master Stateroom 3	24
Master Stateroom 4	25
Master Settee	25
Master Vanity	25
Master Sink	25
Master Shower	25

---

Master Head and Shower	25
VIP Stateroom 1	26
VIP Stateroom 2	26
VIP Stateroom 3	26
VIP Stateroom 4	26
VIP Head and Sink	26
Guest Stateroom Port	26
Guest Stateroom Starboard	27
Guest Head	27
Control Panel	27
КОНТАКТЫ	28
Контактная информация	28
Телефоны	28
Время работы	28
Адрес	28

# ХАРАКТЕРИСТИКИ

## Основная информация

Тип судна: Моторная яхта

Подкатегория: Flybridge

Модельный год: 2018

Год постройки: 2017

Страна: United States

Верх: Electronic Sunroof

## Размеры

Длина общая: 68' 0" (20.73m)

Ширина: 17' 6" (5.33m)

## Скорость, вместимость и масса

Крейс. скорость: 24 Kts. (28 MPH)

Макс. скорость: 29 Kts. (33 MPH)

Водоизмещение: 65700 Pounds

Вместимость воды: 243 Gallons

Вместимость сточного бака: 79 Gallons

Объем топливного бака: 911 Gallons

## Размещение

Всего кают: 4

Спальные места: 8

Всего ком. состава: 3

Койки экипажа: 2

Комм. состав экипажа: 1

## Корпус и палуба

Материал корпуса: Fiberglass

## Информация о двигателе

---

**Двигатели:** 2

**Производитель:** Volvo

**Модель:** D13 IPS 1200

**Тип двигателя:** Inboard

**Тип топлива:** Diesel

---

# ПОДРОБНОЕ ОПИСАНИЕ

---

## Description

---

"HUMBLE & HUNGRY" is an Incredible 2018 Prestige 680 Flybridge, ordered and built by the factory as a showpiece. Equipped with a great list of Factory, Dealers, and Owner installed options and décor upgrades. The yacht has been professionally maintained to the highest standards, daily since new. Carries the balance of manufactures warranty's, and is ready to enjoy.

## Walkthrough

---

This Prestige 680 motor yacht is loaded with features found on much larger yachts, in fact, she can accommodate as many people as most 90' yachts. Five stateroom layout, including a forward on deck master, centerline VIP, two guest staterooms midship, and twin berth Skippers quarter aft accessible from the transom. Full-featured flybridge, largest in her class, forward lounge seating. Wenge high gloss cabinetry, interior upholstery is white leather.

## Key Features

---

- Huge Interior Volume
- 105,000 BTU Water Chiller Air Conditioning
- Aft Galley and Dining Area
- 360-Degree Panoramic Views
- Independent Owner's Suite and Guest Suites
- Wide Side Decks, Hydraulic Platform Capacity 882 lbs.
- Custom Amtico Galley, Dining and Salon Flooring
- Retractable Sunshades, Seakeeper Gyro Stabilizer
- Twin Volvo D13 IPS 1200's, Joystick Docking, and ESC until 06/24

## Factory Installed Options

---

- Electronics Package Raymarine
- Lower Helm – Glass Bridge
- (3) GS165 Displays
- Radar Open Array – 72 Miles - Painted Black
- AIS650
- VHF 260 Plus Radio
- P70LS Auto Pilot
- Volvo Virtual Anchor – Dynamic Positioning



- Digital Depth Finder
- Sirius XM Weather and Radio
- Direct TV – HD/TV System with Black Dome
- Flybridge Helm
- (2) GS165 16” Displays
- VHF 260 Plus Radio
- P70LS Auto Pilot
- Digital Depth Finder

---

## Additional Options

---

- Salon layout with Sofa on Starboard Side
- Aft Mooring Electric Windlass
- Anchoring Kit – Stainless Steel Anchor
- Stainless Steel Bow Protector
- Aft Closing Sunbrella – Taupe
- Flybridge Hardtop
- Set of Protection Covers for Flybridge
- Hydraulic Bathing Platform
- Gyroscopic Stabilizer Seakeeper
- 27.5 KVA Genset
- Wine Cellar
- Ice maker on Deck and Flybridge
- Washing Machine Combo
- Dishwasher
- Vacuum System – 3 Units
- Home Theater Bose 525 salon
- Dining Room Chairs in Leather Beige
- Automatic Trim Tabs
- Speakers Bose Cockpit and Flybridge
- Home theater Bose ST300 + Subwoofer Master Cabin
- Reverse engine Room Camera
- Electric Hi-Low System for Salon Curtains
- Window External Curtains in Sunworker Bronze
- Porthole Mosquito Screens
- Additional Cushion Guest Bed

---

## North American Package

---

- Tropical Chilled – Water Air Conditioning – 105,000 BTU
- Electronics Package
- Foredeck Sunpad Mattress with Forward Lounge Area and Adjustable Backrests

- Maindeck Protective Covers: Foredeck – Foredeck Sunpad, Cockpit Seating, and Cockpit Table Conversion Flybridge
- Flybridge Protective Covers – Sunpad, Seating Galley, and Table
- Stainless Steel Bow Protection
- Electric Trim Tabs
- Electric Retractable Sun Awning in Cockpit
- Glendinning Cable Management System
- Upgraded Flybridge Windscreed

---

## After Sale Installed Options

---

- Sirius XM Weather and Radio
- Direct TV HD/TV with Domes and Radar Painted Black
- Hi-tech Window Film for Windshield and Salon Windows
- Apple TV on TV's
- Salon Custom Designer Rug
- Master Stateroom Custom mattress -\$3,000
- Upgraded Interior and Exterior Sound System
- Sea Recovery ULT-RO Clear Spot Free Ultra Pure Water

---

## Standard Equipment

---

- Bow Thruster Electric
- Search Light
- Engine Oil Exchange System
- Engine Driven Emergency Bilge Pump
- Automatic Fire Fighting System
- Teak Floor on Cockpit, Sideways, Floor of Bathing Platform
- Teak Tables –1 for Flybridge + 1 for Aft Cockpit
- External Cushions
- Aft Access to Engine Room/Crew Quarter
- Dockside Water
- Barbecue on Flybridge
- Fridge on Flybridge
- Refrigerator with Freezer
- Portholes Mosquito Nets
- Owners Cabin Carpet Floor
- Towel Sets for Bathrooms
- LED Light System
- Black and Grey Water Tanks with Diverter for Sea Discharge
- Radio CD Player on Flybridge – Remote Control and Speakers Aft CP
- Anti-Fouling Bottom Paint – Installed in USA

- 240V Shore Power with Automatic Retractable Reel – X2

---

## Salon

---

- 360 Degree Vision Exceptional Natural Light
- Private Access Forward to Owners Stateroom
- White Leather Sofa
- Custom Amtico Flooring
- L Sofa and Glass Table – Portside
- Electric Hi/Low Salon Curtains
- Glass Coffee Table
- Sliding Door to Starboard
- Custom Designer Rug
- 40" LCD Hi/Low TV with Home Theater Bose 525 with Sub

---

## Lower Helm

---

- Helm Station
- Helm Console with Engine Throttles, Joystick, and Full Engine Instrumentation
- KVH V3HTS (TracPhone)
- Wireless Charging Station on Console
- Upholstered Two Person Helm Bench
- Windscreen Wipers with Intermittent Setting and Washers
- Windscreen Demister
- USB Plugs
- Searchlight with Remotes at Each Helm Station Air Horn

---

## Galley

---

- 2 Stainless Steel Sinks
- Combination Microwave / Grill
- 3-Zone Induction Cooktop
- Extractor Hood
- Corian Worktop
- Fridge -52 US Gal / Freezer – 15 US Gal
- Waste Bin
- Storage Drawers and Cupboards
- Wrap-Around Galley Island
- Custom Amtico Flooring
- Dishwasher
- Vacuum system

- Abundance Additional Storage

---

## Master Stateroom - On Deck Forward

---

- Independent Access via Private Walkway Forward
- Custom Mattress
- Large LED TV with Upgraded Sound System, Bose ST300 with Sub
- 2 Reading Lamps
- Bedside Tables with Storage
- Walk-in Closet with Shelving
- Storage Cabinet
- Dressing Table with Mirror and Stool
- Sofa
- Panoramic Side Windows with Blinds and Opening Ports
- Overhead Skylight with Opening Hatch with Electric Shade
- AC and USB plug

---

## Master Head Ensuite

---

- Corian Countertops and Washbasin
- Separate Shower Compartment
- Freshwater Electric Toilet
- Extractor Fan
- AC Plug
- Opening Port

---

## VIP Stateroom - Midship

---

- Large Island Berth
- Innerspring Mattress
- TV / Entertainment System
- 2 Reading Lamps
- Bedside Table Large Closet with Shelving
- Dressing Table with Mirror and Stool
- Large Side Windows with Blinds and Opening Ports
- AC and USB Plug

---

## VIP Head

---

- En-suite Bathroom

- Corian Countertops and Washbasin
- Separate Shower Compartment
- Freshwater Electric Toilet
- Extractor Fan
- AC Plug
- Opening Port

---

## Guest Stateroom Port

---

- 2 Single Berths
- TV - Stereo System
- Reading Lamps
- Bedside Table with Storage
- Large Closet with Shelving
- Large Side Window with Opening Port
- AC and USB Plugs

---

## Guest Stateroom Starboard

---

- Single Berth to STARBOARD Convertible to Double Berth
- TV - Stereo System
- Reading Lamp
- Bedside Table with Storage
- Large Closet with Shelving
- Large Side Window with Port
- AC and USB Plug

---

## Guest Day Head

---

- Corian Countertop and Washbasin
- Mirror Vanity
- Separate shower compartment
- Freshwater Electric Toilet
- Extractor Fan
- AC Plug

---

## Crew / Captain Cabin and Head

---

- 2 Single Berths
- Storage Closet

- Separate Bathroom with Toilet, Washbasin and Shower
- Additional Holding Tank – 13 US Gallons
- Large Window on the Transom with Blinds
- Crew Door Access from Bathing Platform
- Direct Access to Engine Room
- Air Conditioning

## Flybridge

---

- Hardtop Option
- Covers for All Upholstery
- 40" LCD TV
- Helm Console with Engine Throttles, Joystick, Compass, 12V Plug
- Helm Station Bench
- Stainless Steel Guard Rails
- Perspex Windscreen
- Seating Area
- Teak Table
- Sun pad with Adjustable Back Rest
- GRP Arch with Space for Antennas
- 2 Marine Stereo Speakers
- Galley with Sink, Storage, Fridge, and Electric Grill
- Courtesy LED Lighting

## Electrical

---

- Cummins Onan 27.5KW Generator with 268 Hours Model 29MDKDS-8124A
- Seakeeper Gyro Stabilizer
- Two 50 Amp 250 Volt Shore Power Cords with Cable Master
- 5 Blue Underwater Lights on Transom
- Battery Bank 24V – Engine 120 A/h
- Battery Bank 24V – House 700 A/h
- Battery Bank Crossover Switch at Helm
- Tactile Graphic Display for Battery Levels, AC Sources, Lighting and Tank Levels
- Remote Battery Switches
- Centralized Distribution and Breaker Boxes for AC and DC Systems
- AC Shore Power System
- Twin Battery Chargers 60A-24V
- Inverter – 2000W
- LED Interior and Exterior Lighting with Dimmer Switches
- AC Plugs in Each Cabin and in the Galley and Salon
- Automatic Fire Extinguishers in Engine Room with control at Each Helm

---

## Mechanical Equipment

---

- 105,000 BTU Chilled Water A/C System
- Washer / Dryer
- Sea Recovery ULR-RO Clear Spot Free Ultra Pure Water
- Freshwater Tanks- 204 Gallons
- Hot Water Heater – 12 Gallons
- Freshwater Pressure Pump
- Grey Water Sump Pump with Automatic Discharge
- Deck Water Inlet with Regulator
- Waste Holding Tank – 77 Gallons
- Overboard Discharge Pumps for Holding Tanks with Macerator Function and Deck Pump-Out
- (5) Automatic bilge pumps with High Water Alarm
- Manual Bilge Pump
- (2) Fuel Tanks (aluminum) with Interconnection Valves – 911 Gallons Total
- Fuel Fills to Port and Starboard with Crossover Valves
- Remote Shut-Off Valves in Aft Companionway
- Ultro Clear
- Spot Free Cleaning

---

## Engine Room

---

- Volvo Extended Coverage Until July 2024 or 2,000 Hours
- Twin Volvo IPS 1200 with 535 / 536 Hours
- Joystick System for IPS
- IPS Nibral Twin Props
- Electronic Power Steering
- Electronic Engine Controls and Throttles at Each Helm
- Single Lever, Cruiser Control, Trim Computer, and Low-Speed Functions
- Bow Thruster Dual Prop – 529 lbs.
- Bronze Seawater Strainers
- Forced Air Ventilation System for Engine Room

---

## Cockpit

---

- Sofa Seating Area
- Teak Cockpit Table with Cup Holders
- Electric Sun Awning
- Teak-laid Cockpit Flooring
- Stainless Steel ladder to Flybridge with Teak Steps
- Access hatch to the Engine Room with Gas Struts

- Transom Safety Gate
- Literal Door in Coaming
- 2 Marine Stereo Speakers
- Upholstered Ceiling Panels with Integrated LED Lighting
- Courtesy LED Lighting
- Stern Docking Winch – Port
- Freshwater / Saltwater Deck Washdown

## Decks

---

- Stainless Steel Stem Head Fitting with Anchor Roller
- Anchor Stop
- Electric Windlass with Wired Remote in Anchor Locker – 24V
- Anchor Locker with Dedicated Space for Fender Storage
- Freshwater / Saltwater Anchor Washdown
- Stainless Steel Cleats (12)
- Stainless Steel Handrails
- Stainless Steel Rubrail
- Foredeck Sunpad Area with Cushions
- Foredeck Seating Area
- Folding Canopy Over Sunpad
- Courtesy LED Lights on Sidedecks
- Teak-Laid Bathing Platform
- Hot and Cold Shower
- Stainless Steel Bathing Ladder

## Hull

---

- Infused GRP Hull with Longitudinal Infused Stringers
- Infused GRP Deck with Counter Molding
- Isophthalic Gelcoat
- Osmosis Barrier
- Infused Structural Bulkhead

## Standard Manuals

---

- User and Owner's Manuals
- Captain's briefcase with set of manuals

## Исключения

---



При продаже яхты исключаются личные вещи владельца.

## **Отказ от ответственности**

---

Компания предоставляет описание судна или яхты добросовестно, но не может гарантировать точность этой информации, а также не ручается за техническое состояние. Покупатель должен проинструктировать своих агентов или оценщиков исследовать представленную информацию более подробно, по собственному желанию. Продажа судна или яхты, изменение цены или снятие с продажи будет происходить без предварительного уведомления.

# ФОТОГРАФИИ

**Profile 1**



**Profile 2**



**Aft View**



**Starboard Aft View**



**Aerial View**



**Flybridge 1**



**Flybridge 2**



**Bow View**



**Bow Sunpad 1**



**Bow Sunpad 2**



**Flybridge Helm 1**



**Flybridge Helm 2**



**Flybridge 3**



**Flybridge 4**



**Flybridge 5**



**Flybridge 6**



**Flybridge 7**



**Flybridge Aft Dining 1**



**Flybridge Aft Dining 2**



**Swim Platform SeaDoo 1**



**Swim Platform SeaDoo 2**



**Aft Deck and Stairs to FB**



**Aft Deck 1**



**Aft Deck 2**



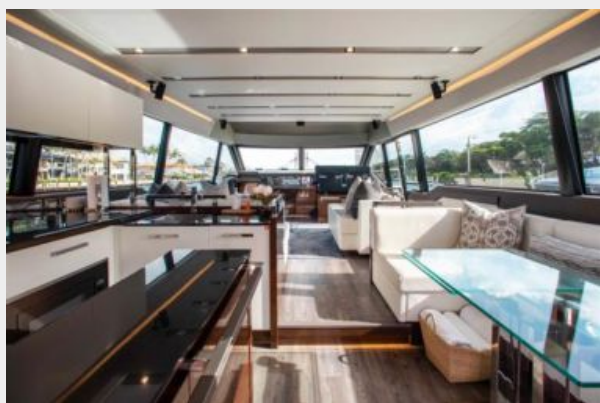
**Aft Deck 3**



**Entrance to Salon**



**Galley Dinette 1**



**Dinette 1**



**Galley Dinette View Aft**



**Galley 1**



**Galley 2**



**Galley 3**



**Galley 4**



**Salon 1**



**Salon 2**



**Salon 3**



**Salon 4**



**Helm 1**



**Helm 2**



**Master Stateroom 1**



**Master Stateroom 2**



**Master Stateroom 3**





**Master Stateroom 4**



**Master Settee**



**Master Vanity**



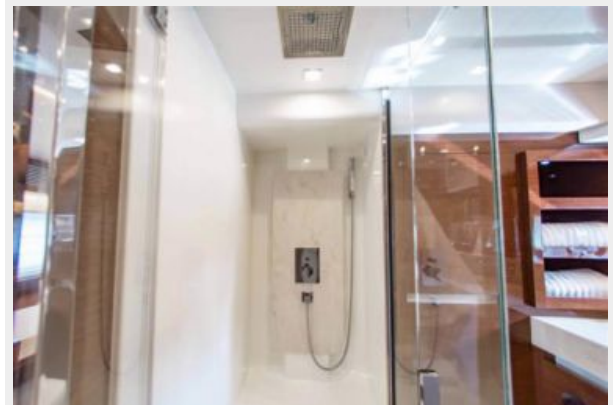
**Master Sink**



**Master Head and Shower**



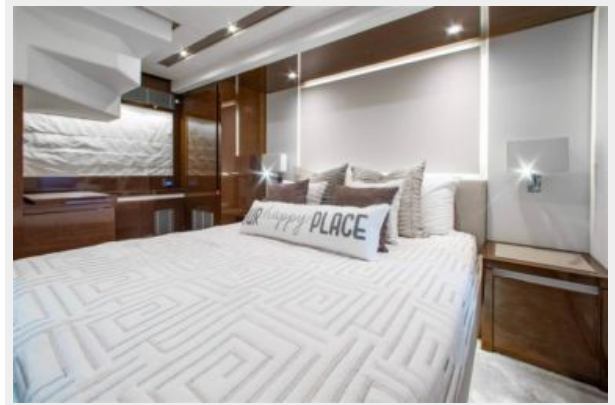
**Master Shower**



**VIP Stateroom 1**



**VIP Stateroom 2**



**VIP Stateroom 3**



**VIP Stateroom 4**



**VIP Head and Sink**



**Guest Stateroom Port**



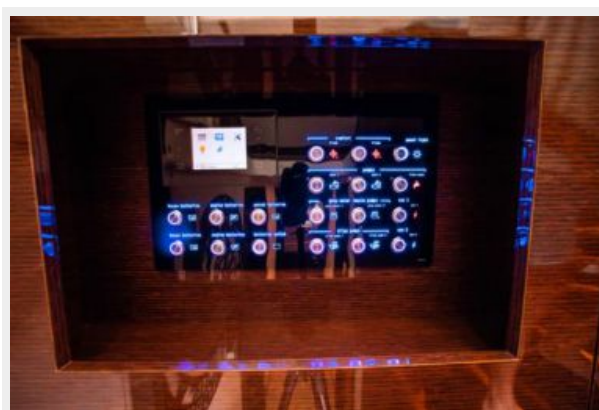
### Guest Stateroom Starboard



### Guest Head



### Control Panel



# КОНТАКТЫ

---

Андрей Шестаков (Andrey Shestakov) – ведущий яхтенный брокер отдела продаж яхт и судов компании Shestakov Yacht Sales Inc. Официальный представитель Shestakov Yacht Sales Inc. для русскоговорящих клиентов в центральном офисе компании в Майами/Форт Лодердейл/Флорида/США.

## Контактная информация

---

Email: [andrey@shestakovyachtsales.com](mailto:andrey@shestakovyachtsales.com)

Web: [shestakovyachtsales.com](http://shestakovyachtsales.com)

## Телефоны

---

Краснодарский край: **+7(918)465-66-44**

США, Майами, Флорида: **+1(954)274-4435**

## Время работы

---

Понедельник – Суббота: **9:00 - 21:00**  
EDT

Воскресенье: **Закрито**

## Адрес

---



Harbour Towne Marina, 850 NE 3rd St,  
STE 213, Dania, FL 33004