

## PRINCESS 25 M — PRINCESS YACHTS



**Builder:** PRINCESS YACHTS

**Year Built:** 2006

**Model:** Motor Yacht

**Price:** PRICE ON APPLICATION

**Location:** Russian Federation

**LOA:** 85' 3" (25.97m)

**Beam:** 20' 0" (6.10m)

**Max Draft:** 5' 5" (1.65m)

Our experienced yacht broker, Andrey Shestakov, will help you choose and buy a yacht that best suits your needs **Princess 25 M — PRINCESS YACHTS** from our catalogue. Presently, at **Shestakov Yacht Sales Inc.**, we have a wide variety of yachts available on our sale's list. We also work in close contact with all the big yacht manufacturers from all over the world.

If you would like to buy a yacht **Princess 25 M — PRINCESS YACHTS** or would like help answering any questions concerning purchasing, selling or chartering a yacht, please call **+1(954)274-4435**

# TABLE OF CONTENTS

TABLE OF CONTENTS	2
SPECIFICATIONS	4
Overview	4
Basic Information	4
Dimensions	4
Speed, Capacities and Weight	4
Accommodations	4
Hull and Deck Information	4
Engine Information	5
DETAILED INFORMATION	6
Princess 25 M	6
Exclusions	7
Disclaimer	7
PHOTOS	8
IMG_4800	8
0710A314E70138B5D98C03C11771428C	8
IMG_4812	8
PHOTO-2021-01-20-10-01-35 2	8
PHOTO-2021-01-20-10-01-35	8
PHOTO-2021-01-20-10-01-37 2	8
PHOTO-2021-01-20-10-01-38	9
PHOTO-2021-01-20-10-01-39 2	9
PHOTO-2021-01-20-10-01-41 2	9
PHOTO-2021-01-20-10-01-42 2	9
PHOTO-2021-01-20-10-01-43 2	9
PHOTO-2021-01-20-10-01-44 2	9
PHOTO-2021-01-20-10-01-47	10
CONTACTS	11

---

Contact details	11
Telephones	11
Office hours	11
Address	11

---

# SPECIFICATIONS

---

## Overview

---

Princess 25 M is a 25.97m motor yacht from a renowned British manufacturer, available for purchase exclusively with Smart Yachts.

## Basic Information

---

**Category:** Motor Yacht

**Model Year:** 2006

**Year Built:** 2006

**Country:** Russian Federation

**Fly Bridge:** Yes

## Dimensions

---

**LOA:** 85' 3" (25.97m)

**Beam:** 20' 0" (6.10m)

**Max Draft:** 5' 5" (1.65m)

## Speed, Capacities and Weight

---

**Displacement:** 165346.6965 Pounds

**Water Capacity:** 396.258078 Gallons

**Fuel Capacity:** 2219.0452368 Gallons

## Accommodations

---

**Total Cabins:** 4

**Crew Sleeps:** 4

## Hull and Deck Information

---

**Hull Material:** Aluminum

---

## Engine Information

---

**Engines:** 2

**Manufacturer:** MTU

**Model:** 16V 2000 M91

---

# DETAILED INFORMATION

---

---

## Princess 25 M

---

The boat is capable of carrying both a small tender on a flybridge and a jet ski on a swimming platform.

The layout includes 4 guest cabins on the lower deck, comprising a full beam master cabin. There are also 2 cabins with 4 berths for crew members on board to ensure high level service.

The flybridge will surely be the center of attention for outdoor recreation, there is a dining area, grill, sink, sofa area, second helm station, which is protected by a hard top, and sun loungers where you can sunbathe.

The yacht underwent a major refit in 2020 and is well equipped:

- Generator Onan, 2 pcs. x 22.5 kW
- Hard-top on flybridge
- Reversible air conditioning
- Bow thruster
- Stern thruster
- Watermaker for salt and freshwater, 2 pcs.
- Inverter 3000 kW (TV, refrigerator in the kitchen)
- Hydraulic gangway for going ashore
- Hydraulic gangway for launching into the water
- Flir night vision camera
- Furuno chartplotter on flybridge
- Garmin chartplotter on flybridge

- Autopilot Raymarine

Full list of equipment and additional information is available upon request.

## **Exclusions**

---

Owner's personal belongings.

## **Disclaimer**

---

The Company offers the details of this vessel or yacht in good faith but cannot guarantee or warrant the accuracy of this information nor warrant the condition of the vessel. A buyer should instruct his representatives, agents, or his surveyors, to investigate such details as the buyer desires validated. This vessel or yacht is offered subject to prior sale, price change, or withdrawal without notice.

# PHOTOS

0710A314E70138B5D98C03C11771428C



IMG\_4800



IMG\_4812



PHOTO-2021-01-20-10-01-35 2



PHOTO-2021-01-20-10-01-35



PHOTO-2021-01-20-10-01-37 2





PHOTO-2021-01-20-10-01-38



PHOTO-2021-01-20-10-01-39 2



PHOTO-2021-01-20-10-01-41 2



PHOTO-2021-01-20-10-01-42 2



PHOTO-2021-01-20-10-01-43 2

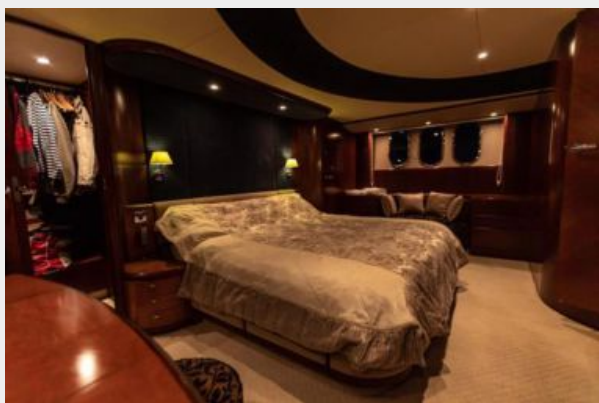


PHOTO-2021-01-20-10-01-44 2



PHOTO-2021-01-20-10-01-47



# CONTACTS

---

Andrey Shestakov, leading yacht broker of the sales department of Shestakov Yacht Sales Inc. Shestakov Yacht Sales Inc., the official representative of the Miami/Fort Lauderdale FL headquarters.

## Contact details

---

Email: [andrey@shestakovyachtsales.com](mailto:andrey@shestakovyachtsales.com)

Web: [shestakovyachtsales.com/en/](http://shestakovyachtsales.com/en/)

## Telephones

---

USA: +1(954)274-4435

## Office hours

---

Monday – Saturday: **9:00 - 21:00** EDT

Sunday: **closed**

## Address

---



Harbour Towne Marina, 850 NE 3rd St,  
STE 213, Dania, FL 33004