

# SUNSEEKER 68 SPORT YACHT — SUNSEEKER



**Builder:** SUNSEEKER

**Year Built:** 2015

**Model:** Motor Yacht

**Price:** PRICE ON APPLICATION

**Location:** United States

**LOA:** 71' 2" (21.69m)

**Beam:** 16' 9" (5.11m)

**Max Draft:** 5' 2" (1.57m)

Our experienced yacht broker, Andrey Shestakov, will help you choose and buy a yacht that best suits your needs Sunseeker 68 Sport Yacht — SUNSEEKER from our catalogue. Presently, at Shestakov Yacht Sales Inc., we have a wide variety of yachts available on our sale's list. We also work in close contact with all the big yacht manufacturers from all over the world.

If you would like to buy a yacht Sunseeker 68 Sport Yacht — SUNSEEKER or would like help answering any questions concerning purchasing, selling or chartering a yacht, please call +1(954)274-4435

# TABLE OF CONTENTS

TABLE OF CONTENTS	2
SPECIFICATIONS	4
Overview	4
Basic Information	4
Dimensions	4
Speed, Capacities and Weight	5
Accommodations	5
Hull and Deck Information	5
Engine Information	5
DETAILED INFORMATION	6
Aft Cockpit	6
Saloon	6
Interior Helm Console	7
Galley	7
Master Aft Stateroom	8
Forward Stateroom	8
Forward Stateroom	9
Forward En Suite Shower Room	9
Starboard Guest Cabin	10
Interior Helm Console	10
Electrical	11
Deck	11
Engine Compartment	12
Exclusions	12
Disclaimer	12
PHOTOS	13
CONTACTS	22
Contact details	22

---

Telephones	22
Office hours	22
Address	22

---

---

# SPECIFICATIONS

---

## Overview

---

**68' Sunseeker Sport Yacht 2015 for Sale!**

**Contact us Today for More Information!**

### Highlights:

**Side Power Stabilizer System**

**Bow & Stern Thruster**

**Hydraulic Swim Platform**

**Transom garage with Williams tender 325 turbojet**

**Crew cabin**

## Basic Information

---

**Category:** Motor Yacht

**Model Year:** 2015

**Year Built:** 2015

**Country:** United States

## Dimensions

---

**LOA:** 71' 2" (21.69m)

**Beam:** 16' 9" (5.11m)

**Max Draft:** 5' 2" (1.57m)

---

## Speed, Capacities and Weight

---

**Displacement:** 164418000 Pounds

**Water Capacity:** 211 Gallons

**Fuel Capacity:** 925 Gallons

---

## Accommodations

---

**Total Cabins:** 3

---

## Hull and Deck Information

---

**Hull Material:** Fiberglass

---

## Engine Information

---

**Engines:** 2

**Manufacturer:** MTU

**Model:** 1350

**Engine Type:** Inboard

**Fuel Type:** Diesel

---

## DETAILED INFORMATION

---

### Aft Cockpit

---

- Self-draining
- Teak-laid cockpit decking
- Stern safety door
- JL Cockpit speakers with CD remote
- Upholstered seating around cockpit table
- Large stern sunbather
- Lockers beneath seating
- Overhead cockpit lights 24v
- Low-level courtesy lights 24v
- Engine room access hatch
- Sport Bridge access stairs
- Boat hook
- Fresh water wash down
- Cockpit full canvas enclosure
- Waeco fridge & freezer
- Fusion MS-UD755
- Aft cockpit camera
- Aft control panel ( platform, garage, passerelle, lights )

### Saloon

---

- Separate dining area with table
- Stowage beneath seats
- Samsung Television 55" on fall and rise system
- Blu-ray/DVD/CD cinema sound system
- Bose sound system
- Salon camera
- Salon U-Shape sofa to starboard side with coffee table
- Blinds
- AirPort Express
- Drinks cupboard
- Overhead halogen lighting LED 24v
- Stainless steel sliding door to cockpit
- Main control panel (AC/DC)
- Generator controls
- Air conditioning
- 3 x double AC sockets
- Wood flooring

- Choice of interior finishes and veneers
- Scatter cushions

---

## Interior Helm Console

---

- Twin helm seats
- Side-Power bow7 stern thruster
- Jabsco search light control
- Seafire system
- Navigation console with chart area
- Hydraulic power steering
- Leather rimmed steering wheel
- Analogue engine instrumentation
- Dual Simrad Chart plotter with GPS
- Radar open scanner
- Simrad Autopilot
- Simrad Speed and depth instrumentation
- Simrad VHF radio with DSC
- Rudder indicator
- Water tank gauge
- Fuel tank gauge
- Trim tab controls
- Single-lever electronic engine controls
- Richie Magnetic compass
- Waterproof plug and socket 12v
- Horn
- Windscreen wipers and washers
- Glass holders
- Hand-held fire extinguisher

---

## Galley

---

- Sink and drainer
- (2) burner cooktop
- AC Digital control panel
- MIELE dishwasher
- Electric refrigerator
- Electric freezer
- BOSCH Microwave convection oven
- Hot and cold water
- Rubbish bin
- Cupboard and drawer storage

- 8 place crockery set
- 8 place cutlery set
- 2 x double AC sockets
- Hand-held fire extinguisher
- First aid kit
- Wood flooring

---

## Master Aft Stateroom

---

- Full beam master
- Full side bed
- Seating sofa to port side
- Samsung TV
- Digital AC control panel
- Overhead speakers
- Cupboard and drawer stowage
- 2 x reading lights 24v
- Bedside drawers
- Walk-in wardrobe
- Overhead lights LED 24v
- 2 x large windows with opening portholes, mosquito screens and blinds
- Two double AC sockets
- Door to shower room
- Fitted carpet
- Settee
- Air Conditioning
- Blu-ray/DVD/CD player with speakers

---

## Forward Stateroom

---

- Queen side bed
- Storage beneath
- Drawer in base-end
- 2 x reading lights 24v
- Outboard shelving and cupboards
- Overhead bedside cupboards
- Hanging wardrobes with mirrored panel
- Overhead lights LED 24v
- 2 x opening portholes
- Portlight blinds



- Deck hatch with blind and mosquito screen
- Skylight
- 2 x double AC sockets
- Door to shower room
- Wood floor
- Air conditioning
- Samsung 32" TV
- Blu-ray/DVD/CD player with speakers
- Overhead speakers

---

## Forward Stateroom

---

- Queen side bed
- Storage beneath
- Drawer in base-end
- 2 x reading lights 24v
- Outboard shelving and cupboards
- Overhead bedside cupboards
- Hanging wardrobes with mirrored panel
- Overhead lights LED 24v
- 2 x opening portholes
- Portlight blinds
- Deck hatch with blind and mosquito screen
- Skylight
- 2 x double AC sockets
- Door to shower room
- Wood floor
- Air conditioning
- Samsung 32" TV
- Blu-ray/DVD/CD player with speakers
- Overhead speakers

---

## Forward En Suite Shower Room

---

- Washbasin
- Taps and accessories
- Hot and cold water supply
- Separate shower compartment
- Electric toilet
- Extractor fan
- Mirrored vanity unit
- Shelved cupboard

- Toothbrush and glass holder
- Soap dispenser
- Towel ring and towels
- Overhead lights
- Opening porthole with mosquito screen and blind
- Razor socket 240/110v

---

## Starboard Guest Cabin

---

- 2 x single berths
- Under-berth storage
- 2 x reading lights 24v
- Hanging wardrobe
- Overhead lighting LED 24v
- Opening porthole
- Double AC socket
- Fitted carpet
- Air conditioning
- Samsung 22" television
- Blu-ray/DVD/CD player with speakers

---

## Interior Helm Console

---

- Twin helm seats
- Side-Power bow7 stern thruster
- Jabsco search light control
- Seafire system
- Navigation console with chart area
- Hydraulic power steering
- Leather rimmed steering wheel
- Analogue engine instrumentation
- Dual Simrad Chart plotter with GPS
- Radar open scanner
- Simrad Autopilot
- Simrad Speed and depth instrumentation
- Simrad VHF radio with DSC
- Rudder indicator
- Water tank gauge
- Fuel tank gauge
- Trim tab controls
- Single-lever electronic engine controls
- Richie Magnetic compass

- Waterproof plug and socket 12v
- Horn
- Windscreen wipers and washers
- Glass holders
- Hand-held fire extinguisher

---

## Electrical

---

- 23 Kw cummins generator with 2605 hours
- AC dockside connection
- Galvanic isolator
- 24v and 12v DC electrical system with full circuit breaker protection
- 8 x engine batteries 24v circuit
- 4 x domestic batteries 24v circuit
- 2 x generator batteries 12v circuit
- Alternator split charging system
- Remote battery switches controlled from locker in cockpit
- Battery charger for 24v circuits
- Battery charger for 12v circuits
- Water heater
- AC electrical sockets throughout the boat
- 24v hand light and cable

---

## Deck

---

- Fittings in stainless steel
- 8 x stainless steel deck cleats
- Pulpit and cockpit rails
- Stainless steel fendering with rubber insert
- Curved safety glass windscreen
- Stainless steel bow roller with anchor stop
- Stainless steel bow plate
- Delta anchor and 60m chain (galvanised)
- Electric winch and capstan with deck and Interior helm controls
- Chain locker with fender storage
- Fender tie bar under anchor locker lid
- Fore deck coach-roof storage lockers
- Fuel fillers port and starboard
- Fresh water filler
- IMCO navigation lights
- 2 x Pantograph windscreen wipers and washers
- Garage for tender

- Ensign staff and socket

## Engine Compartment

---

- Soundproofing throughout
- Fuel filters/water separators to engines
- Fuel filters/water separators to generators
- Automatic bilge and flood pumps with high-level alarms
- Generator exhaust silencers and water separators
- Engine exhaust dry risers and water injection
- Strainers to all raw water inlets
- Power steering – hydraulic control steering
- Garage door and trim tabs hydraulic control unit
- Lifting platform hydraulic control unit
- Air intakes fitted with emergency shutdown flaps (automatically operated)
- Air extraction fans (AC) fitted with butterfly shutdown dampers
- Exhaust gas temperature sensor
- Fluorescent lights (AC)
- Engine room fire extinguishing system (FM200)
- 1 x AC 220v socket
- 1 x 24v socket
- Portable CO2 fire extinguisher
- Inspection lamp

## Exclusions

---

Owner's personal belongings.

## Disclaimer

---

The Company offers the details of this vessel or yacht in good faith but cannot guarantee or warrant the accuracy of this information nor warrant the condition of the vessel. A buyer should instruct his representatives, agents, or his surveyors, to investigate such details as the buyer desires validated. This vessel or yacht is offered subject to prior sale, price change, or withdrawal without notice.

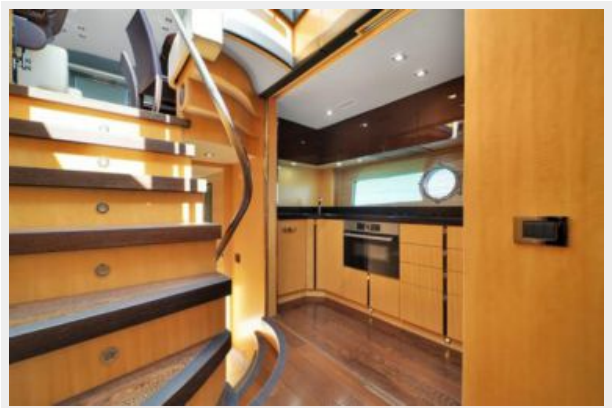
# PHOTOS





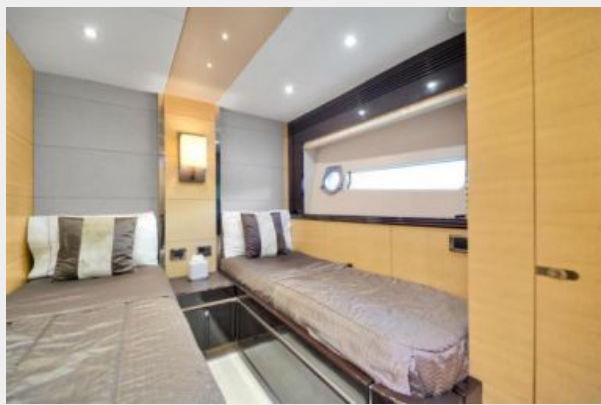
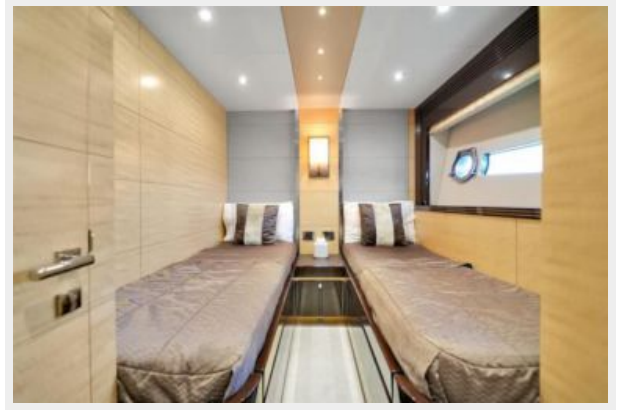






















# CONTACTS

---

Andrey Shestakov, leading yacht broker of the sales department of Shestakov Yacht Sales Inc. Shestakov Yacht Sales Inc., the official representative of the Miami/Fort Lauderdale FL headquarters.

## Contact details

---

Email: [andrey@shestakovyachtsales.com](mailto:andrey@shestakovyachtsales.com)

Web: [shestakovyachtsales.com/en/](http://shestakovyachtsales.com/en/)

## Telephones

---

USA: +1(954)274-4435

## Office hours

---

Monday – Saturday: **9:00 - 21:00** EDT

Sunday: **closed**

## Address

---



Harbour Towne Marina, 850 NE 3rd St,  
STE 213, Dania, FL 33004