

WILLOW — OYSTER MARINE LTD



Builder: OYSTER MARINE LTD

Year Built: 2006

Model: Cruising Sailboat

Price: PRICE ON APPLICATION

Location: United States

LOA: 46' 10" (14.27m)

Beam: 14' 6" (4.42m)

Min Draft: 0' 0" (0.00m)

Max Draft: 7' 1" (2.16m)

Cruise Speed: 7.5 Kts. (9 MPH)

Our experienced yacht broker, Andrey Shestakov, will help you choose and buy a yacht that best suits your needs **WILLOW — OYSTER MARINE LTD** from our catalogue. Presently, at Shestakov Yacht Sales Inc., we have a wide variety of yachts available on our sale's list. We also work in close contact with all the big yacht manufacturers from all over the world.

If you would like to buy a yacht **WILLOW — OYSTER MARINE LTD** or would like help answering any questions concerning purchasing, selling or chartering a yacht, please call **+1(954)274-4435**

TABLE OF CONTENTS

TABLE OF CONTENTS	2
SPECIFICATIONS	6
Overview	6
Basic Information	6
Dimensions	6
Speed, Capacities and Weight	6
Accommodations	6
Hull and Deck Information	7
Engine Information	7
DETAILED INFORMATION	8
INTRODUCTION	8
CONSTRUCTION	8
ACCOMMODATIONS	8
ENTERTAINMENT EQUIPMENT	9
DECK EQUIPMENT	10
CANVAS	11
RIG AND SAIL HANDING	11
ENGINE/MACHINERY	11
TANKAGE	12
ELECTRICAL SYSTEM	12
NAVIGATION and COMMUNICATION EQUIPMENT	13
SAFETY EQUIPMENT	15
ADDITIONAL EQUIPMENT	15
EXCLUSIONS	16
Exclusions	16
Disclaimer	16
PHOTOS	17
At Dock	17

At Dock	17
Deck Saloon	17
Saloon	17
Saloon Dining, Port Side	17
Saloon	17
Saloon, Looking Aft	18
Aft Cabin Berth	18
Aft Cabin Hanging Locker	18
Aft Cabin Vanity/Desk	18
Aft Cabin En-suite Head and Shower	18
Fwd. Cabin V-berth	18
Fwd. Guest Head	19
Port Guest Cabin	19
Nav Display	19
Nav Desk	19
Autopilot Remote	20
VHF	20
Tank Tender	20
Mastervolt Controller	20
Galley	21
Galley	21
Engine	21
Service Panel	21
Cockpit, Port Side	21
Cockpit, Looking Fwd.	21
Cockpit, Stbd. Side	22
Cockpit Teak Table	22
Winches	22
Cockpit	22

Cockpit Enclosure	23
Helm Display	23
Raymarine eS Series-9 under Dodger	23
Sat Phone	23
Jammers	24
Cabintop Winch	24
Mainsail	24
Mast	24
Mast Base	25
Spinnaker Pole	25
Foredeck with Solar Panel	25
Solar Panel	25
Solar on Bimini	26
Solar Control	26
Life Raft	26
Outboard Crane	26
Spinnaker	27
Sailing	27
Bahamas	27
Bahamas	27
Aft Stbd. Qtr, Bahamas	27
Bahamas	27
Bahamas	28
Layout	28
WILLOW, 2006 Oyster 46 Layout	28
CONTACTS	29
Contact details	29
Telephones	29
Office hours	29

Address

29

SPECIFICATIONS

Overview

Come see **WILLOW** on display at the Newport Brokerage Boat Show September 16-19 at the Newport Shipyard, Newport, RI

Basic Information

Category: Cruising Sailboat

Sub Category: Deck Saloon

Model Year: 2006

Year Built: 2006

Country: United States

Coast Guard #: 1200423

Vessel Top: Bimini Top

Cockpit: Yes

Dimensions

LOA: 46' 10" (14.27m)

LWL: 40' 7" (12.37m)

Beam: 14' 6" (4.42m)

Min Draft: 0' 0" (0.00m)

Max Draft: 7' 1" (2.16m)

Speed, Capacities and Weight

Cruise Speed: 7.5 Kts. (9 MPH)

Displacement: 39700 Pounds

Water Capacity: 185 Gallons

Fuel Capacity: 211 Gallons

Accommodations

Total Cabins: 3

Sleeps: 6

Total Heads: 2

Hull and Deck Information

Hull Material: Fiberglass

Deck Material: Teak

Hull Configuration: Fin & Bulb

Hull Color: White

Hull Designer: Rob Humphries/Oyster
Design Team

Engine Information

Engines: 1

Manufacturer: Volvo

Model: D2-75

Engine Type: Inboard

Fuel Type: Diesel

DETAILED INFORMATION

INTRODUCTION

Come see WILLOW on display at the Newport Brokerage Boat Show

September 16-19 at the Newport Shipyard WILLOW is an Oyster 46, meticulously maintained and fully equipped for offshore sailing. She is fast and safe, with electric in-mast furling, Harken roller furling genoa, electric winches, new asymmetric spinnaker (2019), and storm sail on removable inner forestay. She has a 3-cabin/2-head layout with large queen in aft stateroom, full V-berth forward, and over/under guest bunks midships. WILLOW is fully equipped for long distance sailing with solar, generator, Simpson dinghy davits and a full complement of safety equipment.

CONSTRUCTION

- Oyster G5 styling
- Single skin solid GRP hull with white Gelcoat, blue boot stripe and blue cove stripe
- Fin keel with externally attached modified lead bulb keel
- Skeg-hung rudder for maximum protection at sea
- Cored deck for weight saving and stiffness, balsa core except in areas of deck hardware or loads
- Teak toe rail
- Stainless steel mooring cleats
- Teak laid side decks and cockpit
- Non-skid on deck areas without teak (new, 2014)
- Spacious cockpit that is both comfortable and protected
- Athena Whitlock pedestal steering
- Access to sail handling controls from the cockpit
- Sugar scoop-style transom with steps
- Swim platform with hot and cold deck shower

ACCOMMODATIONS

Sleeps six in three cabins:

- Teak joinery is substantial, well-fitted and finished to a high level
- Teak soles
- Air conditioning

Forward Cabin:

V-berth with filler piece. Storage in lockers and drawers. Split mattress with lee cloth. Large Lewmar deck hatch with OceanAir sky screen for ventilation and privacy.

Twin Cabin to Port:

Twin-bunk berths with storage beneath. Hanging locker. Lewmar hatch with OceanAir sky screen. Lee cloths.

Guest Head to Starboard:

Manual Jabsco head. Vanity with Avonite countertop. Mirror and storage. Receiver-style shower and curtain.

Main Saloon:

Large L-shaped settee to port with teak dining table that folds across the saloon to accommodate dining for six or seven. Bottle stowage locker beneath the table. All settee bottoms and backs are removable to access storage areas and systems. To starboard is a large base cabinet locker forward of the settee. Bar locker with glass storage. Trademark Oyster opening forward saloon windows with OceanAir blinds.

Nav Station:

Forward-facing chart table with opening top. Instruments are mounted in removable panels. Electrical distribution panel for DC and AC loads on bulkhead behind nav station.

Galley:

Walk-through galley to port with Force 10 4-burner propane stovetop and oven. Microwave. Twin stainless steel sinks. Frigoboat refrigerator and freezer (new 2019.) Opening Gebo port to cockpit, opening Gebo hullport outboard of stove.

Owners Cabin:

Island berth with drawer storage underneath. Hanging locker, cabinets and desk/vanity table. Opening hullport windows. Large Lewmar overhead hatch. En-suite head with shower stall. Jabsco toilet with holding tank.

ENTERTAINMENT EQUIPMENT

- 40" Samsung TV mounted in saloon with infrared remote switching
- Cambridge Audio 2.1 mini speaker system
- Alpine 6.5 coaxial speaker set
- Alpine double-DIN DVD
- New JL Audio 6.5 all-weather speakers in cockpit
- 29" Samsung F4000 Series mounted TV with Samsung 2D Blu-Ray DVD in master

stateroom

DECK EQUIPMENT

Deck Hardware:

- Lewmar blocks and tracks
- Harken headsail furler

Steering:

- Whitlock pedestal with compass
- Engine start/stop and single-lever throttle and gear control
- Lewmar wheel

Davits:

- Simpson Cooney 225 stainless davits

Winches: All winches by Lewmar

- (2) 58 CEST electric primary winches
- (2) 44 CST mainsheet winches (port winch is electric 44 CEST)
- (1) 44 CEST winch under dodger (mainsheet/outhaul)
- (2) 44CST winches on mast

Hatches:

- Lewmar alloy-framed deck hatches
- Gebo alloy-framed portlights in coaming
- Gebo opening hullports
- Canvas covers for all hatches

Anchoring:

- Lewmar windlass with foot switches at bow and remote control at helm
- 60 lb. CQR-style anchor with 260 feet of chain
- Fortress 60 lb. secondary Kedge anchor w/ 59'-5/8" chain and 250 foot rode

Deck Equipment Updates:

Heavy duty (700 lb. capacity) stainless steel hoist with 4/1 pulley and 50 feet of line installed on Port side stern for dinghy engine hoist or MOB retrieval (2018)

Replaced wire lifelines with solid stainless steel rails from midships to stern pulpit. Creates safer handholds and more space to mount grill, safety equipment, kayak/paddleboard cradles, dive tank holders etc. (2019)

CANVAS

- Sunbrella “Toast” dodger and bimini
- Full cockpit enclosure with zip-on panels and interchangeable sunscreen aft (new 2020).
- Stainless steel grab rail at aft edge of dodger
- Pedestal and wheel cover
- Covers for all hatches

RIG AND SAIL HANDING

Rigging:

- Electric in-mast furling sloop rig
- Formula spars
- Removable forestay and adjuster
- Manual boom vang
- Wire rigging
- Windex and VHF at masthead
- Radar reflector
- Harken manual headsail furler

Sails:

- North Sails mainsail (2014)
- North Sails 150% genoa
- North Sails 110% yankee (2012)
- Doyle asymmetrical cruising spinnaker (2018)
- Storm jib in “Safety Orange”
- Sails inspected by North Sails

ENGINE/MACHINERY

Engine:

- Volvo D2-75, 4-cylinder 55 kW (75 hp), turbocharged electronic common rail diesel with 150S S-Drive gearbox (2,300 hrs. - April, 2021)
- Ambassador rope cutter on sail drive
- Three-bladed Gori prop (new 2018)

Generator:

- Mastervolt Whisper 8 kW (upgraded from 6 kW) generator – 220V (1200 hrs. - April, 2021)

Bow Thruster:

- MaxPower tunnel CT100, 7 hp

Climate Control:

- Cruisair 16,000 BTU air conditioner in saloon
- Cruisair 10,000 BTU air conditioner in owner's cabin

Refrigeration:

- Frigomatic DC system in upright chest; keel cooled (2019)
- Frigomatic DC freezer box; K50 compressor with evaporator plate; under counter next to fridge; keel cooled (2019)

TANKAGE

- Fuel: 211 U.S. gallons (GRP tank)
- Water: 185 U.S. gallons (GRP tank)
- Tank tender gauge located at nav station

Hot Water: 11 gallon hot water heater, operates both from engine cooling loop, as well as AC immersion heater. (new 2018)

Water System: Twin-Max pressure pump with accumulator tank

Holding: Polypropylene holding tanks with Wema gauges for each head (2) with gravity and deck discharge

ELECTRICAL SYSTEM

- U.S. wired 230 V, 50 amp, 60 hz
- 110 V outlets in owner's cabin, galley and nav station

Batteries:

- 24 V DC domestic battery bank with 460 amp hours. (new 2017)
- Separate 12 V battery for engine and generator start, 88 amp hours each
- Emergency parallel link

Battery Chargers:

- Mastervolt chargemaster 100
- Mastervolt chargemaster 80Charge controller

Inverter:

- Mastervolt 2000

Alternators:

- (1) 60 amp engine- and (1) 100 amp domestic alternator with regulator

Shore Power:

- 50 amp shore power plug with Hubbell socket

Lighting:

- Interior LED lighting flush-mounted into headliners (new 2018)
- Additional reading lamps at each berth
- Red courtesy lights at saloon steps and sole level
- Ocean LED X series spreader-mounted mast lights (new 2018)
- LED transom lights (new 2018)

Solar:

- 572 total watts solar

220 watts of Solara Ultra S series walkable solar panels mounted on foredeck

- (2) Solara Power M 110W Pane
- (2) Victron SmartSolar MPPT 75/10

352 watts solar from five individual flexible panels sewn into top of Bimini:

- (2) Solbian SP 52L - 10.9V - 1.8 lbs. - 44.0" x 11.7"
- (1) Solbian SP 144 - 30.0V - 4.2 lbs. - 59.0" x 21.7"
- (2) Solbian SP 52Q - 10.9V - 1.8 lbs. - 24.0" x 21.7"

Each flexible panel has its own controller:

- (5) Genasun MPPT Boost Charge controller Pb 105W 12V
- 12V and dual USB ports installed in the cockpit. (2018)
- 12V and dual USB ports installed inside at Nav station (2018)

NAVIGATION and COMMUNICATION EQUIPMENT

Compass:

- Binnacle-mounted S.I.R.S. Major

Instruments:

- Raymarine ST60 instrument pack
- Companionway Console:
- Speed/Analog wind/Depth

Chart Table:

- Raymarine E80 repeater to Acer 20" display. MFD (multi-function display)

GPS/Plotter/Radar:

- Raymarine eS Series 12" at helm (2018)
- Raymarine eS series 9" under dodger (2018)
- 15" smart screen wired into eS Raymarine 9" MFD located at nav station with remote keypad (2018)
- Sirius satellite weather interface

AIS:

- Raymarine AIS 700 Class B transceiver/splitter (new 2019)

Radar:

- 4 kW HD Radome on mast (2017)

Autopilot:

- Raymarine ST7000 autopilot
- ST6002 control head for autopilot on pedestal

Navigation/Deck Lights:

- Aqua Signal 41 bow and stern lights
- Steaming/deck floodlight
- Tri-color anchor/navigation light at masthead
- Boom lights

Windex:

- Combined Windex/VHF aerial at masthead

VHF Radio:

- Raymarine Ray260 VHF – AIS (new 2019) with handset and internal speaker at Nav station, and connected handset and speaker at helm.

Wi-Fi Booster:

- Wave RoguePro - catches Wi-Fi signals from up to two miles away. (2019). Connected to Linksys Wi-Fi network WAP300N which allows your own private Wi-Fi network onboard

while in marina or at anchor.

Satellite Phone:

- Iridium 9575 Satellite telephone with docking station mounted at Navigation table connected to external antenna for excellent reception. Can also be used away from the docking station with extending antenna and long-lasting battery. Full set of chargers and external accessories. Flexibility useful when planning ditch bag contents.
- Panasonic telephone (new 2019) which connects to satellite telephone allowing use of phone as portable handset while sat phone is in cradle.
- Oceans Sidekick satellite Wi-Fi router (2016) which allows e-mail and weather downloads using Iridium sat phone

SAFETY EQUIPMENT

Life Raft:

- Plastimo Transocean ISO 4-person cannister life raft

EPIRB:

- ACR 406
- Radar Reflector:
- Firdell "Blipper" on mast

Bilge Pumps:

- Jabsco Maxi Puppy 3000 electric with Hydro-Air switch and audible alarm
- Whale Gusher 10 MKIII, manual

Fire Suppression:

- Fireboy automatic fire suppression system for engine compartment with gauge at nav station

Deck Safety:

- Emergency tiller
- Horseshoe lifebuoy
- LifeSling with lights
- Danbuoy
- Webbing jackstays

ADDITIONAL EQUIPMENT

- Varnished teak cockpit table
- Cockpit cushions (new, 2014)
- Lines / fenders
- Oyster custom Wedgwood bone china yacht crockery
- Oyster custom Sheffield stainless steel cutlery
- Heyco tool kit
- Spares and manuals
- Many cruising spares, including complete spare autopilot, ram and hardware
- Outboard motor bracket
- Outboard hoist (see deck equipment)

EXCLUSIONS

The owner's personal effects are excluded from the sale.

Exclusions

Owner's personal belongings.

Disclaimer

The Company offers the details of this vessel or yacht in good faith but cannot guarantee or warrant the accuracy of this information nor warrant the condition of the vessel. A buyer should instruct his representatives, agents, or his surveyors, to investigate such details as the buyer desires validated. This vessel or yacht is offered subject to prior sale, price change, or withdrawal without notice.

PHOTOS

At Dock



At Dock



Deck Saloon



Saloon



Saloon Dining, Port Side



Saloon



Saloon, Looking Aft



Aft Cabin Berth



Aft Cabin Hanging Locker



Aft Cabin Vanity/Desk



Aft Cabin En-suite Head and Shower



Fwd. Cabin V-berth



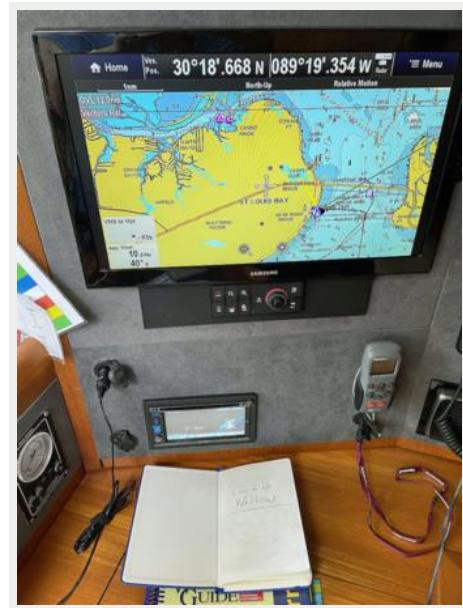
Fwd. Guest Head



Port Guest Cabin



Nav Display



Nav Desk



Autopilot Remote



VHF



Tank Tender



Mastervolt Controller



Galley



Galley



Engine



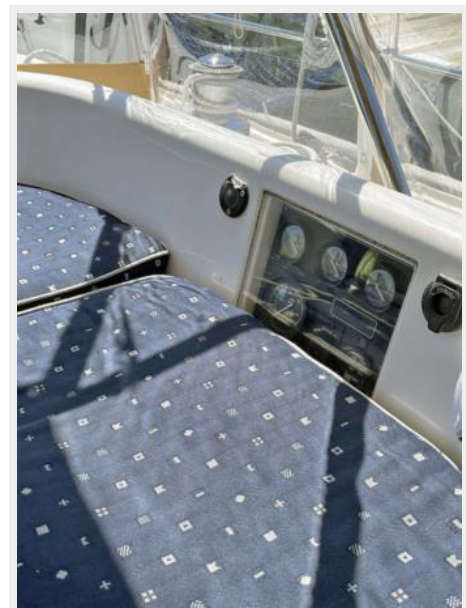
Service Panel



Cockpit, Looking Fwd.



Cockpit, Port Side



Cockpit, Stbd. Side



Cockpit Teak Table



Winches



Cockpit



Cockpit Enclosure



Helm Display



Raymarine eS Series-9 under Dodger



Sat Phone



Cabintop Winch



Jammers



Mainsail



Mast



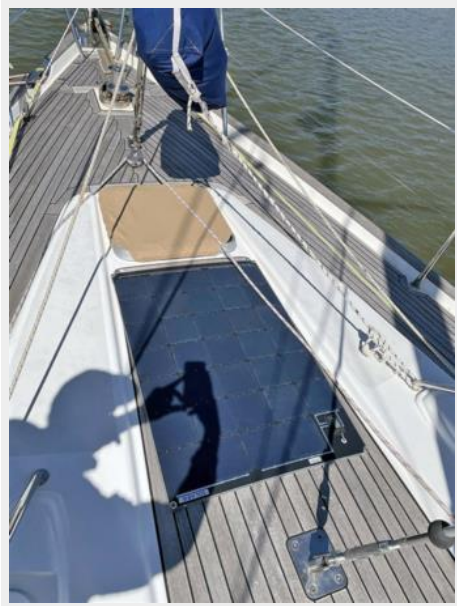
Mast Base



Spinnaker Pole



Foredeck with Solar Panel



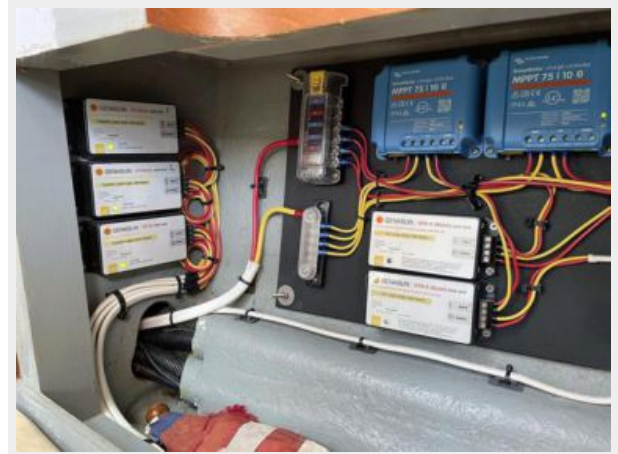
Solar Panel



Solar on Bimini



Solar Control



Life Raft



Outboard Crane



Spinnaker



Sailing



Bahamas



Bahamas



Aft Stbd. Qtr, Bahamas



Bahamas



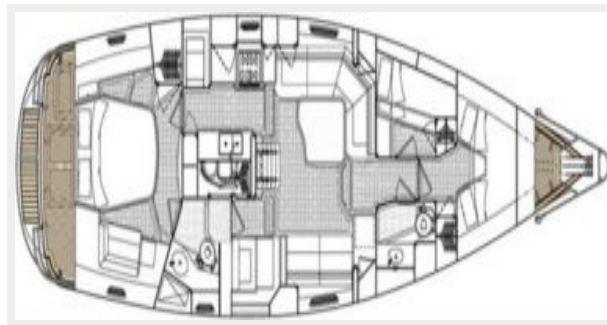
Bahamas



Layout



WILLOW, 2006 Oyster 46 Layout



CONTACTS

Andrey Shestakov, leading yacht broker of the sales department of Shestakov Yacht Sales Inc. Shestakov Yacht Sales Inc., the official representative of the Miami/Fort Lauderdale FL headquarters.

Contact details

Email: andrey@shestakovyachtsales.com

Web: shestakovyachtsales.com/en/

Telephones

USA: +1(954)274-4435

Office hours

Monday – Saturday: **9:00 - 21:00** EDT

Sunday: **closed**

Address



Harbour Towne Marina, 850 NE 3rd St,
STE 213, Dania, FL 33004