

## CRULL-N-AROUND — OFFSHORE



**Судостроитель:** OFFSHORE

**Год постройки:** 1997

**Модель:** SHELBY

**Цена:** ЦЕНА ЯХТЫ ПО ЗАПРОСУ

**Местонахождение:** United States

**Длина общая:** 48' 0" (14.63m)

**Ширина:** 15' 6" (4.72m)

**Мин. осадка:** 3' 6" (1.07m)

**Макс. осадка:** 3' 10" (1.17m)

Купить Crull-N-Around — OFFSHORE а также выбрать подходящую вам яхту из нашего каталога яхт вам поможет опытный яхтенный брокер Андрей Шестаков. На сегодняшний день компания Shestakov Yacht Sales Inc. имеет большое количество яхт в собственном списке продаж, а также тесно сотрудничает со всеми крупными яхтенными производителями по всему миру.

Для того чтобы купить яхту Crull-N-Around — OFFSHORE а также проконсультироваться по любому вопросу связанному с покупкой, продажей, чартером яхт позвоните по телефону **+7(918)465-66-44**.

# ОГЛАВЛЕНИЕ

ОГЛАВЛЕНИЕ	2
ХАРАКТЕРИСТИКИ	6
Обзор	6
Основная информация	6
Размеры	6
Скорость, вместимость и масса	6
Размещение	7
Корпус и палуба	7
Информация о двигателе	7
ПОДРОБНОЕ ОПИСАНИЕ	8
MAIN DESCRIPTION	8
WALKTHROUGH	8
Electronics	9
ELECTRICAL	9
Mechanical	9
DECK	9
DISCLAIMER	9
Исключения	10
Отказ от ответственности	10
ФОТОГРАФИИ	11
1	11
2	11
3	11
4	11
5	11
6	12
7	12
8	12

9	12
10	12
11	12
12	13
13	13
14	13
15	13
16	13
17	13
18	14
19	14
20	14
21	14
22	14
23	14
24	15
25	15
26	15
27	15
28	15
29	15
30	16
31	16
32	16
33	16
34	16
35	16
36	17
37	17

---

38	17
39	17
40	17
41	17
42	18
43	18
44	18
45	18
46	18
47	18
48	19
49	19
50	19
51	19
52	19
53	19
54	20
55	20
56	20
57	20
58	20
59	20
60	21
61	21
62	21
63	21
<b>КОНТАКТЫ</b>	<b>22</b>
Контактная информация	22
Телефоны	22

---

---

Время работы	22
Адрес	22

---

# ХАРАКТЕРИСТИКИ

## Обзор

**"CRULL-N-AROUND"** Crull-n-Around is a 1997 Offshore 48 Yachtfish. Offshore Yachts, well known for their quality, has a long history of fiberglass construction, and the 48 Yachtfish is one of their most popular models. Crull-n-Around offers island queen berths in BOTH of her staterooms, and the optional larger guest head with separate shower forward (in lieu of the dinette) for guests or family. Crull-n-Around is in need of some TLC, which consists mostly of cosmetic issues from the lack of use. She was hauled-out November 2020 and had a full bottom job which included :Bottom paint / Cutlass bearings & Through hulls serviced. Owner reported the vessel ran very well on her return trip from the boat yard. Health issues have forced her owner to put Crull-n-Around on the market for sale, creating an opportunity to purchase a top tier vessel at an attractive price.

## Основная информация

**Тип судна:** SHELBY

**Подкатегория:** Aft Cabin

**Модельный год:** 1997

**Год постройки:** 1997

**Страна:** United States

## Размеры

**Длина общая:** 48' 0" (14.63m)

**Ширина:** 15' 6" (4.72m)

**Мин. осадка:** 3' 6" (1.07m)

**Макс. осадка:** 3' 10" (1.17m)

## Скорость, вместимость и масса

**Водоизмещение:** 41000 Pounds

**Вместимость воды:** 300 Gallons

**Объем топливного бака:** 600 Gallons

## Размещение

---

Всего кают: 2

Всего ком. состава: 2

## Корпус и палуба

---

Материал корпуса: Fiberglass

## Информация о двигателе

---

Двигатели: 2

Производитель: Caterpillar

Модель: 3126

Тип двигателя: Inboard

Тип топлива: Diesel

---

# ПОДРОБНОЕ ОПИСАНИЕ

---

## MAIN DESCRIPTION

---

**"CRULL-N-AROUND"** Crull-n-Around is a 1997 Offshore 48 Yachtfish. Offshore Yachts, well known for their quality, has a long history of fiberglass construction, and the 48 Yachtfish is one of their most popular models. Crull-n-Around offers island queen berths in BOTH of her staterooms, and the optional larger guest head with separate shower forward (in lieu of the dinette) for guests or family. Crull-n-Around is in need of some TLC, which consists mostly of cosmetic issues from the lack of use. She was hauled-out November 2020 and had a full bottom job which included :Bottom paint / Cutlass bearings & Through hulls serviced. Owner reported the vessel ran very well on her return trip from the boat yard. Health issues have forced her owner to put Crull-n-Around on the market for sale, creating an opportunity to purchase a top tier vessel at an attractive price.

## WALKTHROUGH

---

Crull-n-Around has a full width fiberglass **swim platform** and a transom door to access her aft cockpit, which is equipped with a shower & sink. Her **Aft Cockpit** has two large deck hatches that provide good access to the lazzerette, which houses the generator, air conditioning compressors & steering system, and also provides a large storage area for your gear. A full size door provides direct access to the master stateroom from the aft cockpit. Crull-n-Around's **Flybridge** offers helm & companion chairs with a table, and will seat six comfortably. Storage is good underneath the stbd settee, and can be accessed from the salon companionway. The tender & davit are secured to the hardtop over the sundeck. A bimini top attached to her radar arch provides shade. Crull-n-Around's **Salon** can be accessed from the sundeck or from her midship doors. Her side doors are designed with gates in the handrails that can give direct access from a dock if needed. Crull-n-Around has an L shaped settee with a high/low dining table and bartop counter with icemaker that occupy the portside. Her lower helm station and entertainment cabinet are to stbd. Natural light and ventilation are provided by her forward windshield & large opening side windows & doors, and when needed air conditioning is also available. Headroom is 6' 8". Just forward is her U-shape **Galley** which also receives natural lighting from the forward windshield. Ventilation is provided by an overhead deck hatch & two opening portlights. Crull-n-Around's galley is equipped with : Princess electric stove, Norcold dual voltage fridge/freezer, Trash compactor, Sharp microwave, Deep double stainless sink and an intercom phone. The **Guest Head** is directly across from the galley and offers a Vac-u-flush toilet & separate shower stall. An overhead deck hatch & two opening portlights provide ventilation. Crull-n-Around offers a queen island berth in her **Forward Stateroom** with private access to the guest head. There are two hanging lockers, an intercom phone and access to the chain locker. Two overhead deck hatches & two opening portlights provide excellent ventilation. Headroom in the galley & forward stateroom is 6' 7". The **Master Stateroom** is aft of the salon and also offers a queen island berth with a custom mattress. It is quite roomy with hanging lockers & drawers. There is a combo washer/dryer inside a cabinet. The master stateroom is equipped with air conditioning, but also



has a large window and full size door that open to the aft cockpit. Headroom is 6' 5". Private access to the **Master Head** is to stbd which also has a separate shower stall. There is an opening portlight for ventilation.

## Electronics

**LOWER HELM** Raymarine E 80 with radar (48 mi) Autohelm with Raypilot 65 remote Raymarine ST 60 depth Ray 210 VHF Heart Link 2000 monitor Fire Boy MA2 -1000 monitor (2) Tankwatch III monitors Guest searchlight control Bennett trim tab control Bow Thruster joystick Windlass control (2) West marine VHF's (handheld) 23" Vizio TV Bose sound system

**UPPER HELM** Raymarine E 120 with radar (48 mi) Raymarine ST 60 Autohelm / Raypilot 650 Raymarine ST 40 compass Icom M 422 VHF with DSC Guest searchlight control Bennett trim tab control Bow thruster joystick Windlass control Clarion M 455 receiver & CD player with Sirius XM Poly-Planar speakers with remote controler on sundeck Ritchie powerdamp compass

## ELECTRICAL

(2) 50 amp shore power inlets (Aft cockpit port side & Stbd walkway midships) Northern Lights 12kw generator Newmar 50 amp Charger (6) 8D batteries in FRP boxes Heart Interphase 2000 Inverter/Charger (2) Alternators

## Mechanical

(2) Caterpillar 3126 420hp Port 1790 hrs Stbd 1780 hrs Twin Disc MG 5061A transmissions / 2.47.1 ratio 2 1/8" shafts with conventional flax seals Nibral 30" propellers / 4 blade (2) Racor 75/1000 fuel filters per engine Reverso oil change system Glendinning synchronizer Sea Star hydraulic steering system / both helms Northern Lights 12kw generator 1240hrs Racor fuel filter 12 volt Wesmar bow thruster (3) Marine Air conditioners (split systems) (4) automatic bilge pumps total / (3) @ 2000gph / (1) @ 800gph 20 gal water heater Fire Boy MA2-1000 Halon system (30lb)

## DECK

Bottom painted / Cutlass bearings replaced - Fall 2020 - Maxwell 2200 electric windlass Rocna anchor with 200' of chain (2) Vac-u-flush toilets Sealand macerator & discharge pump (4) Stainless steel fuel tanks (600 gal total) (2) Stainless steel water tanks (300 gal total) Magma propane grill

## DISCLAIMER

The Company offers the details of this vessel in good faith but cannot guarantee or warrant the

accuracy of this information nor warrant the condition of the vessel. A buyer should instruct his agents, or his surveyors, to investigate such details as the buyer desires validated. This vessel is offered subject to prior sale, price change, or withdrawal without notice.

## **Исключения**

---

При продаже яхты исключаются личные вещи владельца.

## **Отказ от ответственности**

---

Компания предоставляет описание судна или яхты добросовестно, но не может гарантировать точность этой информации, а также не ручается за техническое состояние. Покупатель должен проинструктировать своих агентов или оценщиков исследовать представленную информацию более подробно, по собственному желанию. Продажа судна или яхты, изменение цены или снятие с продажи будет происходить без предварительного уведомления.

# ФОТОГРАФИИ

1



2



3



4



5



6



7



8



9



10



11



12



13



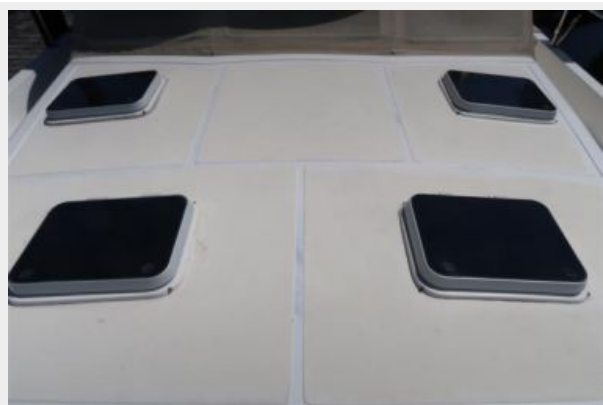
14



15



16



17



18



19



20



21



22



23



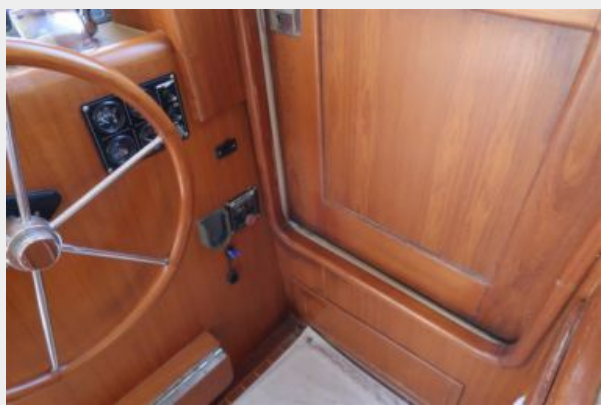
24



25



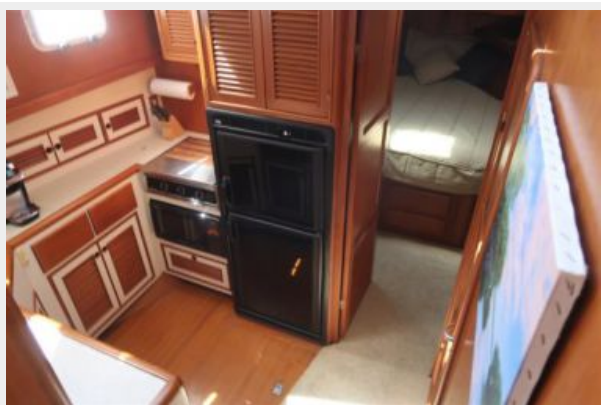
26



27



28



29



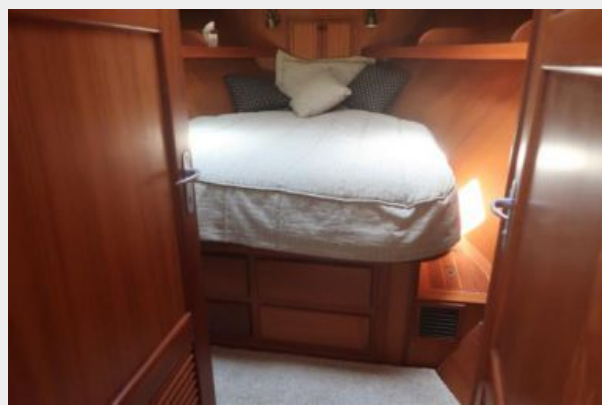
30



31



32



33



34

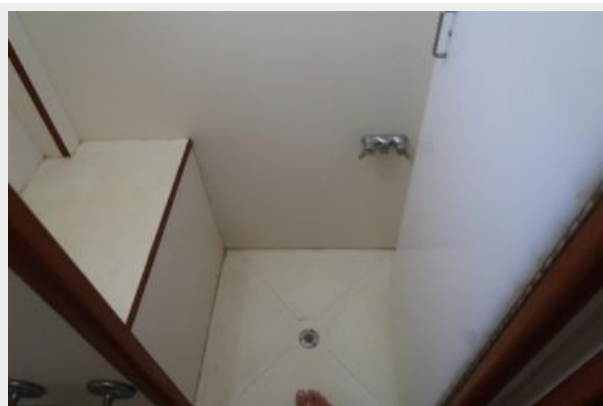


35





36



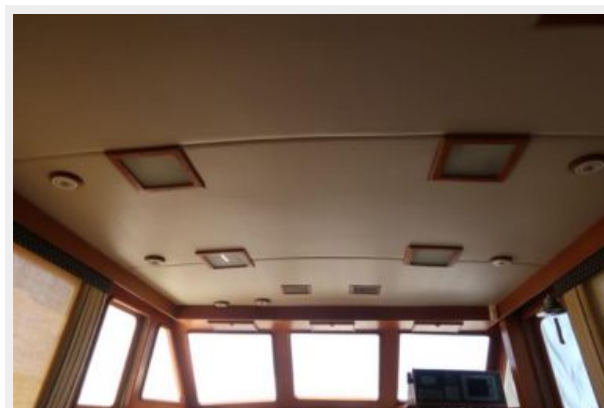
37



38



39



40



41



42



43



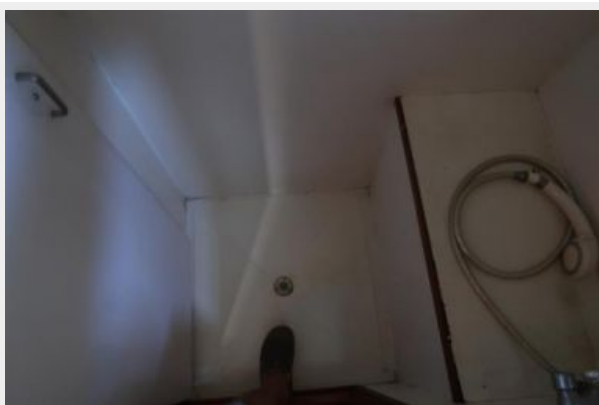
44



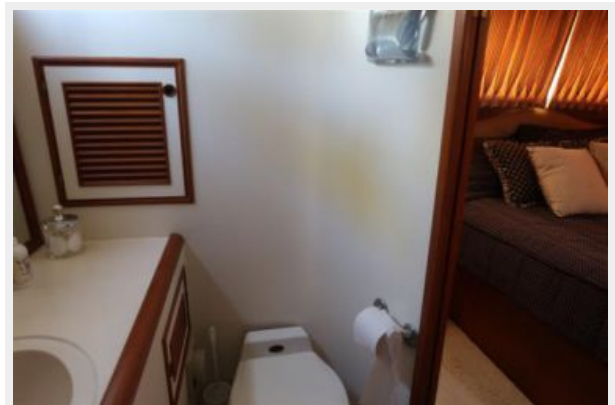
45



46



47



48



49



50



51



52



53



54



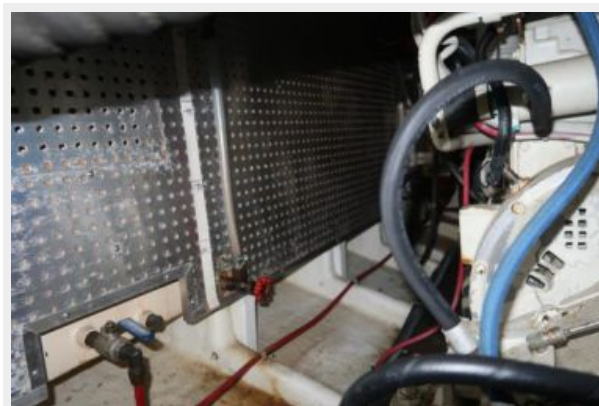
55



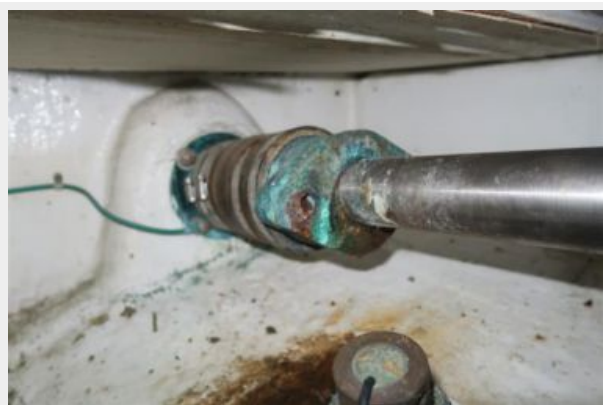
56



57



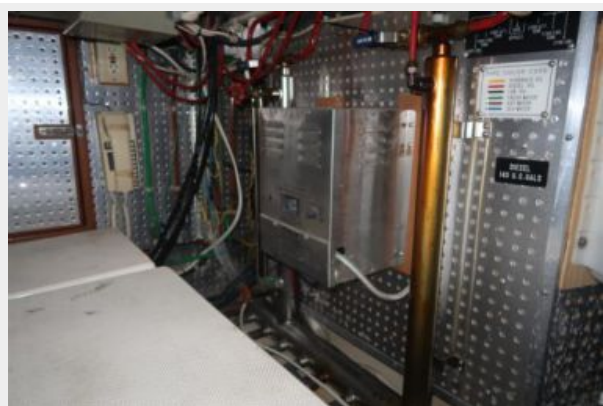
58



59



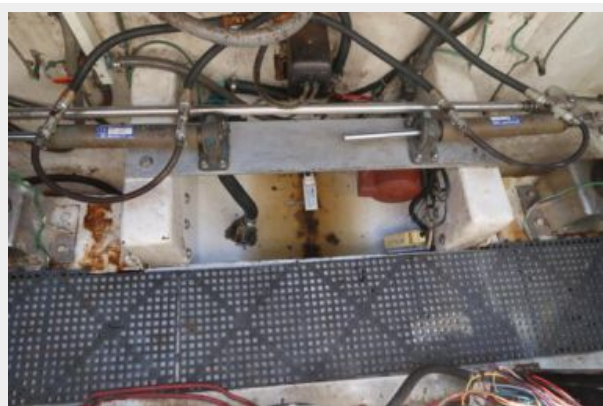
60



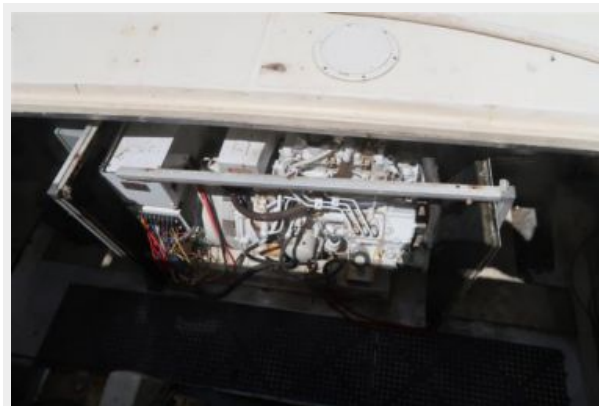
61



62



63



# КОНТАКТЫ

---

Андрей Шестаков (Andrey Shestakov) – ведущий яхтенный брокер отдела продаж яхт и судов компании Shestakov Yacht Sales Inc. Официальный представитель Shestakov Yacht Sales Inc. для русскоговорящих клиентов в центральном офисе компании в Майами/Форт Лодердейл/Флорида/США.

## Контактная информация

---

Email: [andrey@shestakovyachtsales.com](mailto:andrey@shestakovyachtsales.com)

Web: [shestakovyachtsales.com](http://shestakovyachtsales.com)

## Телефоны

---

Краснодарский край: **+7(918)465-66-44**

США, Майами, Флорида: **+1(954)274-4435**

## Время работы

---

Понедельник – Суббота: **9:00 - 21:00**  
EDT

Воскресенье: **Закрето**

## Адрес

---



Harbour Towne Marina, 850 NE 3rd St,  
STE 213, Dania, FL 33004