

THE HIDE OUT — CARVER



Builder: CARVER

Year Built: 1995

Model: Motor Yacht

Price: PRICE ON APPLICATION

Location: United States

LOA: 38' 0" (11.58m)

Cruise Speed: 21 Kts. (24 MPH)

Max Speed: 28 Kts. (32 MPH)

Our experienced yacht broker, Andrey Shestakov, will help you choose and buy a yacht that best suits your needs **The Hide Out — CARVER** from our catalogue. Presently, at Shestakov Yacht Sales Inc., we have a wide variety of yachts available on our sale's list. We also work in close contact with all the big yacht manufacturers from all over the world.

If you would like to buy a yacht **The Hide Out — CARVER** or would like help answering any questions concerning purchasing, selling or chartering a yacht, please call **+1(954)274-4435**

TABLE OF CONTENTS

TABLE OF CONTENTS	2
SPECIFICATIONS	5
Overview	5
Basic Information	5
Dimensions	5
Speed, Capacities and Weight	5
Accommodations	5
Hull and Deck Information	5
Engine Information	6
DETAILED INFORMATION	7
MAIN DESCRIPTION	7
DISCLAIMER	7
Exclusions	7
Disclaimer	7
PHOTOS	8
1 THO Carver 380 Stern 1	8
2 THO Carver 380 Stern 3	8
3 THO Carver 380 Aft 1	8
4 THO Carver 380 Aft 2	8
6 THO Carver 380 Stern Stb	8
5 THO Carver 380 Stern Port	8
7 THO Carver 380 Fwd Port	9
8 THO Carver 380 Fwd Stb	9
9 THO Carver 380 Bridge Stairs	9
10 THO Carver 380 Bridge 1	9
11 THO Carver 380 Bridge 2	9
12 THO Carver 380 Bridge 3	9
13THO Carver 380 Bridge 4	10

14 THO Carver 380 Bridge 5	10
15 THO Carver 380 Arch	10
16 THO Carver 380 Helm 1	10
17 THO Carver 380 Helm 2	10
18 THO Carver 380 Model	10
19 THO Carver 380 Salon 1	11
20 THO Carver 380 Salon 2	11
21 THO Carver 380 Salon 3	11
22 THO Carver 380 Salon 4	11
23 THO Carver 380 VB 1	11
24 THO Carver 380 VB 2	11
26 THO Carver 380 Galley 1	12
25 THO Carver 380 VB 3	12
27 THO Carver 380 Galley 2	12
28 THO Carver 380 Galley 3	12
30 THO Carver 380 Head 1	13
29 THO Carver 380 Galley 4	13
31 THO Carver 380 Head 2	13
32 THO Carver 380 Manual 1	13
33 THO Carver 380 Manual 2	13
34 THO Carver 380 Eng 1	13
35 THO Carver 380 Eng 2	14
36 THO Carver 380 Eng 3	14
37 THO Carver 380 Gen 1	14
38 THO Carver 380 Gen 2	14
39 THO Carver 380 Gen 3	14
40 THO Carver 380 Port Eng 1	14
42 THO Carver 380 Stb Eng 1	15
41 THO Carver 380 Port Eng 2	15

43 THO Carver 380 Stb Eng 2	15
CONTACTS	16
Contact details	16
Telephones	16
Office hours	16
Address	16

SPECIFICATIONS

Overview

1995 Carver 380 Santego SE Get this Carver Santego 380 before she is gone, well maintained and ready for cruising on day one! The Carver Santego 380 SE is one of Carver's most popular motor yachts. The 380 works great for both the weekend cruiser and the extended cruising trips. She sleeps 4 with an island birth in the master stateroom and a wraparound dinette that converts to a double birth. A full galley makes her very accommodating and the head has entry from both the galley and the master stateroom. Top side she has walk through access to the foredeck and makes a great bridge for entertaining guest and enjoying the ride. She also sports walk around decks for quick access front to back and a comfortable double helm seat.

Basic Information

Category: Motor Yacht

Model Year: 1995

Year Built: 1995

Country: United States

Dimensions

LOA: 38' 0" (11.58m)

Speed, Capacities and Weight

Cruise Speed: 21 Kts. (24 MPH)

Max Speed: 28 Kts. (32 MPH)

Accommodations

Total Cabins: 1

Total Berths: 2

Total Heads: 1

Hull and Deck Information

Hull Material: Fiberglass

Engine Information

Engines: 2

Manufacturer: Crusader

Model: Crusader 454 XL

Engine Type: Inboard

Fuel Type: Gas/Petrol

DETAILED INFORMATION

MAIN DESCRIPTION

1995 Carver 380 Santego SE Get this Carver Santego 380 before she is gone, well maintained and ready for cruising on day one! The Carver Santego 380 SE is one of Carver's most popular motor yachts. The 380 works great for both the weekend cruiser and the extended cruising trips. She sleeps 4 with an island birth in the master stateroom and a wraparound dinette that converts to a double birth. A full galley makes her very accommodating and the head has entry from both the galley and the master stateroom. Top side she has walk through access to the foredeck and makes a great bridge for entertaining guest and enjoying the ride. She also sports walk around decks for quick access front to back and a comfortable double helm seat. **Recent Upgrades/Repairs:-** New full size refrigerator- New macerator for head- All engines will be serviced- Bottom paint, May 2020- New interior carpet, Jan 2021- AC recirculation pump replaced- New LED lights and dimmers throughout- Freshwater engine cooling impellers changed Slip is available to new owner if they desire.

DISCLAIMER

The Company offers the details of this vessel in good faith but cannot guarantee or warrant the accuracy of this information nor warrant the condition of the vessel. A buyer should instruct his agents, or his surveyors, to investigate such details as the buyer desires validated. This vessel is offered subject to prior sale, price change, or withdrawal without notice.

Exclusions

Owner's personal belongings.

Disclaimer

The Company offers the details of this vessel or yacht in good faith but cannot guarantee or warrant the accuracy of this information nor warrant the condition of the vessel. A buyer should instruct his representatives, agents, or his surveyors, to investigate such details as the buyer desires validated. This vessel or yacht is offered subject to prior sale, price change, or withdrawal without notice.

PHOTOS

1 THO Carver 380 Stern 1



2 THO Carver 380 Stern 3



3 THO Carver 380 Aft 1



4 THO Carver 380 Aft 2



5 THO Carver 380 Stern Port



6 THO Carver 380 Stern Stb



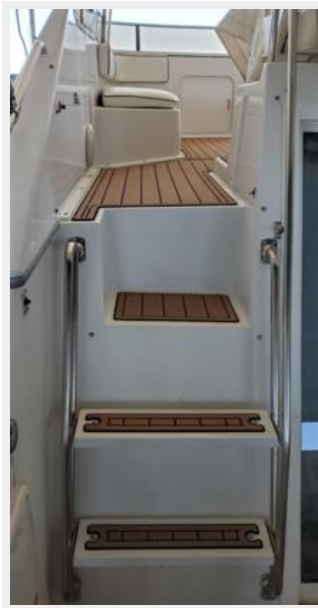
7 THO Carver 380 Fwd Port



8 THO Carver 380 Fwd Stb



9 THO Carver 380 Bridge Stairs



10 THO Carver 380 Bridge 1



11 THO Carver 380 Bridge 2



12 THO Carver 380 Bridge 3



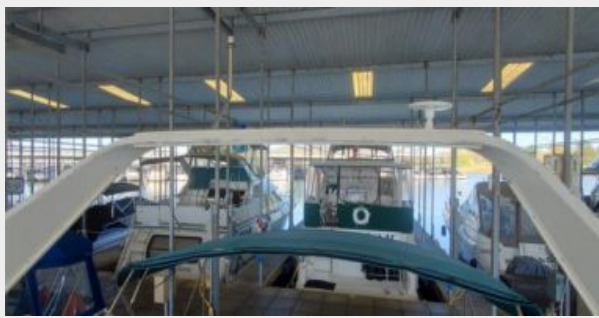
13THO Carver 380 Bridge 4



14 THO Carver 380 Bridge 5



15 THO Carver 380 Arch



16 THO Carver 380 Helm 1



17 THO Carver 380 Helm 2



18 THO Carver 380 Model



19 THO Carver 380 Salon 1



20 THO Carver 380 Salon 2



21 THO Carver 380 Salon 3



22 THO Carver 380 Salon 4



23 THO Carver 380 VB 1



24 THO Carver 380 VB 2



25 THO Carver 380 VB 3



26 THO Carver 380 Galley 1



27 THO Carver 380 Galley 2



28 THO Carver 380 Galley 3



29 THO Carver 380 Galley 4



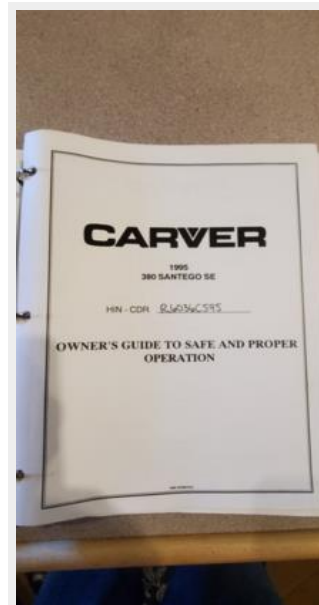
30 THO Carver 380 Head 1



31 THO Carver 380 Head 2



32 THO Carver 380 Manual 1



33 THO Carver 380 Manual 2



34 THO Carver 380 Eng 1



35 THO Carver 380 Eng 2



36 THO Carver 380 Eng 3



37 THO Carver 380 Gen 1



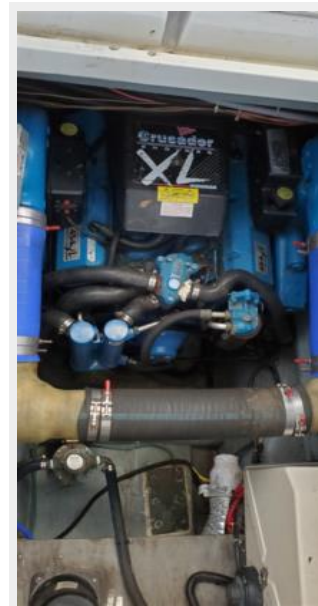
38 THO Carver 380 Gen 2



39 THO Carver 380 Gen 3

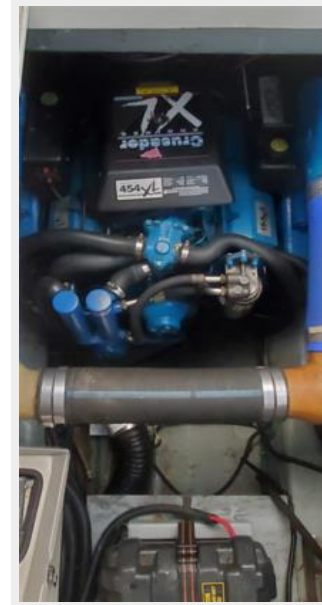


40 THO Carver 380 Port Eng 1



42 THO Carver 380 Stb Eng 1

41 THO Carver 380 Port Eng 2



43 THO Carver 380 Stb Eng 2



CONTACTS

Andrey Shestakov, leading yacht broker of the sales department of Shestakov Yacht Sales Inc. Shestakov Yacht Sales Inc., the official representative of the Miami/Fort Lauderdale FL headquarters.

Contact details

Email: andrey@shestakovyachtsales.com

Web: shestakovyachtsales.com/en/

Telephones

USA: +1(954)274-4435

Office hours

Monday – Saturday: **9:00 - 21:00** EDT

Sunday: **closed**

Address



Harbour Towne Marina, 850 NE 3rd St,
STE 213, Dania, FL 33004