

OCEAN VIBES — SUNREEF



Builder: SUNREEF

Year Built: 2020

Model: Catamaran

Price: PRICE ON APPLICATION

Location: United States

LOA: 74' 8" (22.76m)

Beam: 35' 4" (10.77m)

Max Draft: 6' 3" (1.91m)

Cruise Speed: 8 Kts. (9 MPH)

Our experienced yacht broker, Andrey Shestakov, will help you choose and buy a yacht that best suits your needs **OCEAN VIBES — SUNREEF** from our catalogue. Presently, at Shestakov Yacht Sales Inc., we have a wide variety of yachts available on our sale's list. We also work in close contact with all the big yacht manufacturers from all over the world.

If you would like to buy a yacht **OCEAN VIBES — SUNREEF** or would like help answering any questions concerning purchasing, selling or chartering a yacht, please call **+1(954)274-4435**

TABLE OF CONTENTS

TABLE OF CONTENTS	2
SPECIFICATIONS	5
Overview	5
Basic Information	5
Dimensions	5
Speed, Capacities and Weight	5
Accommodations	6
Hull and Deck Information	6
Engine Information	6
DETAILED INFORMATION	7
Overview	7
Construction and Hull	7
Rigging and Sails	8
Moorings and Tools	8
Main Machinery	8
Deck Equipment	9
Electrical Systems	9
Lights	10
Navigation and Electronics	10
Steering System	10
Plumbing	11
Galley and Laundry Equipment	11
Entertainment Equipment	12
Interior	12
Safety Equipment	12
Additional Features	12
Tender	12
Exclusions	13

Disclaimer	13
PHOTOS	14
Port Stern Profile	14
Salon	14
Salon	14
Salon	14
Salon Looking Aft	14
Navigation Station - Main Deck	14
Salon Bar and Navigation Station	15
Galley	15
Master Stateroom	15
Master Stateroom	15
Master Shower	15
Master Bath	15
Guest Stateroom	16
Guest Stateroom	16
Guest Bath	16
Guest Stateroom	16
Guest Bath	16
Guest Bath	16
Guest Stateroom	17
Guest Stateroom	17
Guest Bath	17
Guest Stateroom	17
Guest Stateroom	17
Guest Bath	17
Flybridge	18
Flybridge	18
Upper Helm	18

Upper Helm	18
Side Deck	18
Foredeck	18
Foredeck	19
Foredeck Seating	19
Foredeck	19
Aft Deck	19
Aft Deck	19
Aft Deck	19
Aft Deck Stairs	20
Port Bow Profile	20
Crew Cabin	20
Engine Room	20
Tender	20
Engine Room	20
Flybridge Layout	21
Upper Deck Layout	21
Lower Deck Layout	21
Main Deck Layout	21
CONTACTS	22
Contact details	22
Telephones	22
Office hours	22
Address	22

SPECIFICATIONS

Overview

Ocean Vibes represents a successful balance between technology and comfort. It was designed with sea-worthiness in mind and offers therefore great stability and excellent performance. This 5-cabin version, model 2020, is equipped with enlarged diesel tanks, upgraded engines, and a countless number of luxury features. She offers the freedom and independence to enjoy life at sea to the maximum. Fully loaded and conditions like-new, she is available now in a Foreign Trade Zone at Bahia Mar in Fort Lauderdale, FL.

Basic Information

Category: Catamaran

Sub Category: Motorsailor

Model Year: 2020

Year Built: 2020

Country: United States

Fly Bridge: Yes

Cockpit: Yes

Dimensions

LOA: 74' 8" (22.76m)

Beam: 35' 4" (10.77m)

Max Draft: 6' 3" (1.91m)

Speed, Capacities and Weight

Cruise Speed: 8 Kts. (9 MPH)

Water Capacity: 422 Gallons

Holding Tank: 93 Gallons

Fuel Capacity: 1056 Gallons

Accommodations

Total Cabins: 5	Sleeps: 14
Captain Cabin: True	Crew Cabin: 1
Crew Sleeps: 3	

Hull and Deck Information

Hull Material: Composite	Deck Material: Teak
Exterior Designer: Sunreef Yachts	Interior Designer: Sunreef Yachts

Engine Information

Engines: 2	Manufacturer: John Deere
Model: 4045AFM85	Engine Type: Inboard
Fuel Type: Diesel	

DETAILED INFORMATION

Overview

OCEAN VIBES was delivered to the current owner in July 2020. She has never been chartered. After its delivery at Sunreef Yachts in Poland, the current owner sailed in the Mediterranean, crossed the Atlantic from Canary Islands to Sint Maarten, cruised the Caribbean, and reached Florida. She is now offered for sale. OCEAN VIBES has been delivered to the current owner in July 2020. OCEAN VIBES represents a successful balance between technology and comfort. It was designed with sea-worthiness in mind and therefore offers great stability and excellent performance. This 5-cabin version, model 2020, is equipped with enlarged diesel tanks, upgraded engines, and a countless number of luxury features, offering the freedom and independence to enjoy life at sea. She is in like-new condition and fully loaded, now available in a Foreign Trade Zone at Bahia Mar in Fort Lauderdale, FL. With manufacturer warranty in effect until July 2021, Ocean Vibes is an exquisite example of the new generation of the Sunreef 70, a catamaran inspired by the future, yet relies on past design principles of proper proportions, elegant lines, and unsurpassed build quality. She embodies a completely fresh superstructure concept, a saloon layout plan with outstanding potential for customization. This new Sunreef 70 catamaran features a vast, central lounging space with panoramic views and endless layout possibilities by opening forward onto the bow terrace and aft into the spacious cockpit. OCEAN VIBES is the first of the new 70' series with galley down, 5 cabins plus crew, and forepeak built. While housing the main helm, the 600 sqft flybridge is dedicated to leisure with more than enough space for movable furniture, a fully equipped wet bar, a barbecue, and large sun pads. The hulls of this new Sunreef 70 catamaran provide impressive volumes to set up a custom layout including airy, luxurious guest cabins and an opulent master suite with a walk-in dressing, desk, sofa, retractable TV, and an immense bathroom. A perfect setting to unwind and relax after a long day in the sun. For someone looking for a ready-to-go blue water Sunreef 70' new generation, this is an incredible opportunity not to be missed.

Construction and Hull

Construction of the hull is composite sandwich made from E-glass laminate and core materials with infusion technology. Glass and carbon fibres have been used together with vinyl ester resin to make strong and durable construction. Hull is reinforced by longitudinal stiffeners and transverse bulkheads which two first at the bow are watertight. Bulkhead between engine rooms and aft cabins is watertight as well. Hull outer osmosis protection in vinylester resin. Hull and deck in white gelcoat.

- Hatches in the floor of the hull to access tanks and bilge
- Cockpit and skirts floor covered with teak - upgrade
- Deck covered with teak and installed flush hatches - upgrade

- Flybridge covered with teak - upgrade
- Fitted forepeak (bed + bathroom) with composite painted wall, with bilge pump - upgrade
- Air conditioning for forepeak – upgrade
- Additional storage on hull - upgrade

Rigging and Sails

- Aluminum mast and aluminum boom
- Lazy jack and lazy bag
- Fully battened main sail 170 m2, crosscut, 2 x reefs genoa 140 m2, double pleated with electric furling system
- Gennaker 185m2 - upgrade
- Complete gear for gennaker/code 0 including electric furling – upgrade

Moorings and Tools

- 2 x Windlass 3000w 24v
- Main FOB ROCK VHHP anchor 90kg - upgrade
- Secondary ULTRAMARINE 80 kg
- 2 x 100m chain (diameter 14mm din)
- Additional anchor FOB HP 20kg + 20m galvanized chain (diameter 10mm)
- Mooring kit (8 x fenders + 4 x mooring ropes) - upgrade

Main Machinery

- Engines: 2 X John Deere 4045AFM85 168 KW (225hp) @ 2600 RPM
- ZF Gearbox 85IV, reduction ratio 2.49
- 2 x ZF MARINE Cruise Control Series engine control heads
- 1 x Engine speed controls (on flybridge)
- 1 x Engine speed controls (on main deck)
- 2 x 4-Blade EWOL feathering propellers
- Direct duplex F51 steel shafts
- Rope cutters on the propeller shafts - upgrade
- Hydraulic steering system
- Fuel filter with water separator in engine and generator fuel delivery line manual fire extinguishing system in engine rooms
- Extension of fuel tanks 2 x 2000L (4000L / 1056gal) - upgrade
- Dock Master with joystick - upgrade
- Fuel transfer system - upgrade
- Larger alternator – upgrade
- Air conditioning system Frigomar 100 000 btu/h - upgrade

Deck Equipment

- Bow pulpits
- Manual gangway
- Port lights
- 1 x Swim ladder on the skirts
- 4 x Manual winches
- Blocks and jammers
- Deck light
- Hatch at the top of the stairway between cockpit and Flybridge
- Storage under floor aft cockpit via hatches access
- Storage under sunbed on Flybridge via hatches access
- Dining table in cockpit to accommodate 10 persons around table
- One side ladder to fix on bulwark for side access of the yacht
- Composite hard top Bimini on the flybridge with integrated lights - upgrade
- 6 x Electric winches - upgrade
- 2 x Electric mooring aft winch (additional) - upgrade
- Cover kit (steering wheel, nav station, fly table) - upgrade
- Hydraulic platform 1000 kg capacity – upgrade

Electrical Systems

- AC-230v main switchboard
- Victron Quattro charger/inverter 24v/5000w/120a
- Shore power inlet (32a 230v 50hz inlet)
- Shore power cord (1x 20m 3-cond)
- 1 x 230v socket per cabin
 - 2 x saloon
 - 2 x dining area
 - 2 x galley
- 2 x USB socket in each cabin
- 2 x in saloon
- DC-24v: main switchboard
- House batteries (24v/800ah)
- 2 x Starting batteries
- DC distribution, wiring OC-24v, main switchboard, upgrade to 1000 AH
- Additional second Victron Quattro charger/inverter 24v/5000w/i20a - upgrade
- Additional charger for engine starting batteries, one on each side - upgrade
- 2 x Parallel working gensets 18kw Koehler, 50hz, 230v - upgrade
- Control of valves and pumps of black water tank level monitoring with alarm (freshwater, black water, and fuel) - upgrade
- Battery and Victron charger monitoring with alarm (starter, main batteries bank, emergency batteries) - upgrade

- Measurement of temperature in the engine room - upgrade

Lights

- Interior lighting with LED lamps
- Navigation lights with LED lamps
- Lights in the engine rooms
- Spotlights on skirt's steps and sidewalks
- Spotlights on front terrace deck and cockpit ceiling
- Domotic system for lights, controls, and doc system (including dimmers for ceilings) - upgrade
- Controls for lighting with dimming
- 4 x Underwater lights LED - upgrade
- Exterior lighting package (underlighting of fixed furniture on flybridge and cockpit) - upgrade
- LED stripe in white
- 2 x LED stripes in white in cockpit ceiling
- LED white stripes on skirts - upgrade

Navigation and Electronics

- Compass (size 135mm)
- Raymarine suite
 - 2 x MFSD i6"
 - Radar 4g
 - Autopilot
 - AIS
 - Depthsounder
 - Speed & Temp sensor
 - GPS
- VHF with DSC function (dual station, built-in AIS receiver, hailer/horn loudspeaker, intercom function)
- Searchlight + control unit - upgrade
- Empty cable tray between satellite antenna position and saloon ceiling – upgrade
- Inmarsat-C- upgrade
- Iridium Go with antenna outside - upgrade
- Internet GSM (2 x sims cards)
- WIFI repeater people link - upgrade

Steering System

- Rudders constructed of a molded sandwich lamination glass / vinylester

- Rudder stocks are in aluminum alloy with self-aligning lower and top bearings
- 5-Spoke steering wheel (diameter 1000mm)
- Hydraulic steering system
- 2 x Emergency tillers

Plumbing

- Freshwater – 1 x 1600l equipped with level indicators, 1 x pressurized pump, 2 x water heaters of 100l each
- Blackwater – 1 x 350l each tanks with discharge system, 1 x electric pump
- 4 x Electrical bilge pumps
- 2 x Manual bilge pumps
- Hand shower on deck
- 1 x Pressurized freshwater outlet on cockpit (female quick coupling snap connector)
- TECMA electric toilets 24v in bathrooms with freshwater flush
- SEA RECOVERY Watermaker 280/h 220v - upgrade
- Freshwater outlet for washing the deck - upgrade
- Saltwater outlet for washing teak - upgrade
- Showerhead on the cockpit ceiling with mixing valve - upgrade
- Additional bilge pump in both forepeaks - upgrade
- 3 x Faucets for drinkable water with UV and charcoal filter – upgrade

Galley and Laundry Equipment

- Bosch and Siemens appliances package
 - refrigerator with freezer
 - dishwasher
 - electric oven
 - cooker
 - washer & dryer
- 2nd 40 cm dishwasher (Bosh Siemens) for saloon - upgrade
- 2 x Ice makers - upgrade
- Refrigerator for drinks (cockpit & flybridge) - upgrade
- Wine cooler for 32 bottles - upgrade
- Stainless steel BBQ - upgrade
- Bar module in cockpit without top hatch - upgrade
- Bar module on flybridge including top hatch - upgrade
- 2 x Additional freezers on floor in hull - upgrade
- Water filtration system - Acuva 5 Litre Purifier with advanced prefilter with faucet in galley, cockpit, and connections to ice-makers inside bar module

Entertainment Equipment

- Widescreen LED TV 55" in the saloon with lifting system up/down - upgrade
- SONOS sound surround system 5.1 (playbar + sub + 2x play) - upgrade
- Waterproof speakers in the cockpit and 2 on flybridge - upgrade
- Waterproof speakers in the front terrace - upgrade

Interior

- All upholstery and cushions made of synthetic fabric
- Vinyl wooden floor in saloon and cabins
- Painted aluminum sliding entrance door
- Dining table with accommodations for 10 guests (same chairs as outside)
- Storage behind sofas in saloon on both side
- Wooden shelves under floor in kitchen and crew cabin in port hull
- Storage under floor in the saloon via hatches access
- Furniture and all interior panels made of individually selected wood material with polyurethane varnish - upgrade
- Additional foldable bed on starboard peak- upgrade

Safety Equipment

- Adaptation to commercial requirements Malta commercial code 2015, sea area 2 (Maltese flags) - upgrade
- Complete rescue equipment with 2 x Life-rafts for 8 people - upgrade

Additional Features

- Aluminum painted sliding door
- Manual roman blinds in cabins
- Curtains and backdrop for entrance door
- Manually concealed sky screen on cabin ceiling hatches - upgrade
- Electrically recessed blinds in the saloon and nav station - upgrade
- Safe - upgrade
- Flybridge cushions set + flybridge mattresses - upgrade
- 6 x Safes

Tender

- 14' 8" ZAR ZF5 with Suzuki outboard 60hp

Exclusions

Owner's personal belongings.

Disclaimer

The Company offers the details of this vessel or yacht in good faith but cannot guarantee or warrant the accuracy of this information nor warrant the condition of the vessel. A buyer should instruct his representatives, agents, or his surveyors, to investigate such details as the buyer desires validated. This vessel or yacht is offered subject to prior sale, price change, or withdrawal without notice.

PHOTOS

Port Stern Profile



Salon



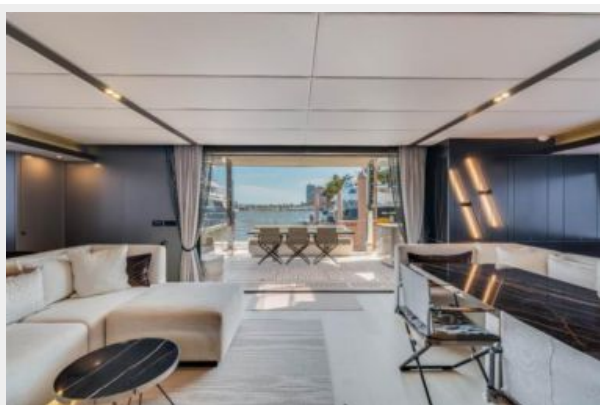
Salon



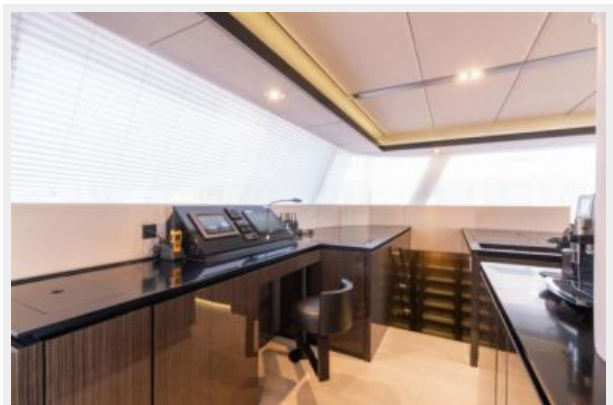
Salon



Salon Looking Aft



Navigation Station - Main Deck



Salon Bar and Navigation Station



Galley



Master Stateroom



Master Stateroom



Master Shower



Master Bath



Guest Stateroom



Guest Stateroom



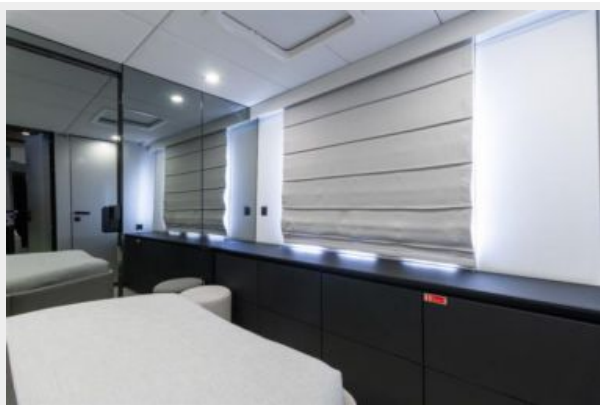
Guest Bath



Guest Stateroom



Guest Bath



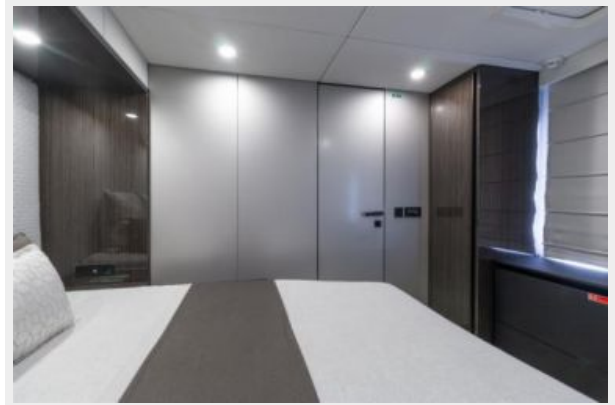
Guest Bath



Guest Stateroom



Guest Stateroom



Guest Bath



Guest Stateroom



Guest Stateroom



Guest Bath



Flybridge



Flybridge



Upper Helm



Upper Helm



Side Deck



Foredeck



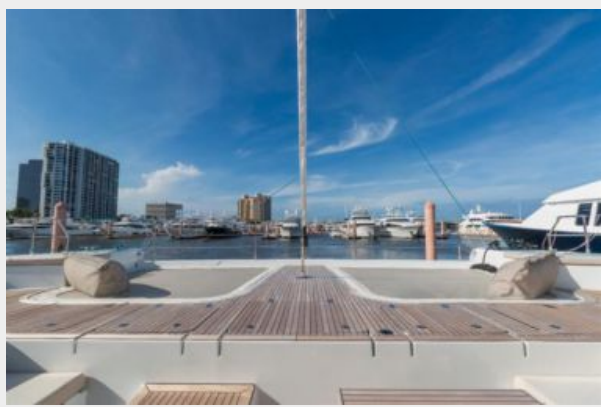
Foredeck



Foredeck Seating



Foredeck



Aft Deck



Aft Deck



Aft Deck



Aft Deck Stairs



Port Bow Profile



Crew Cabin



Engine Room

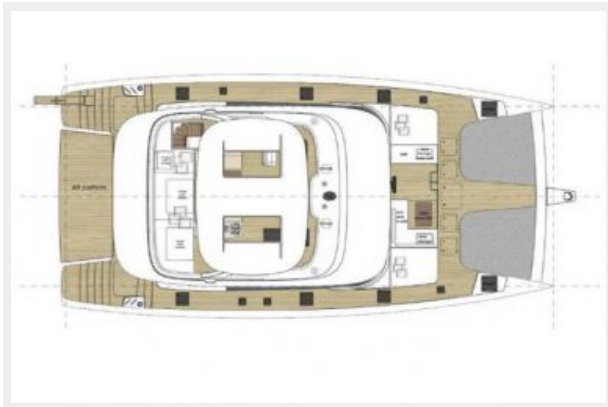
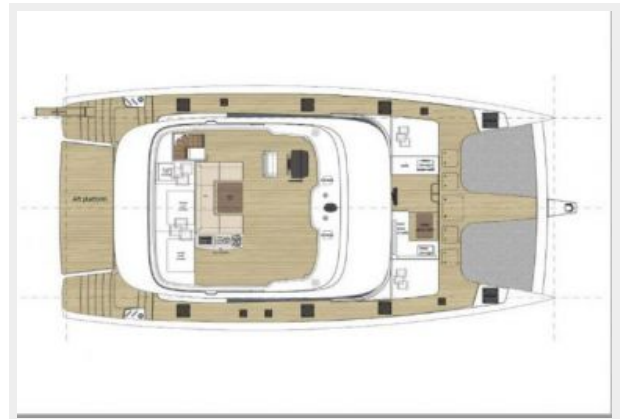
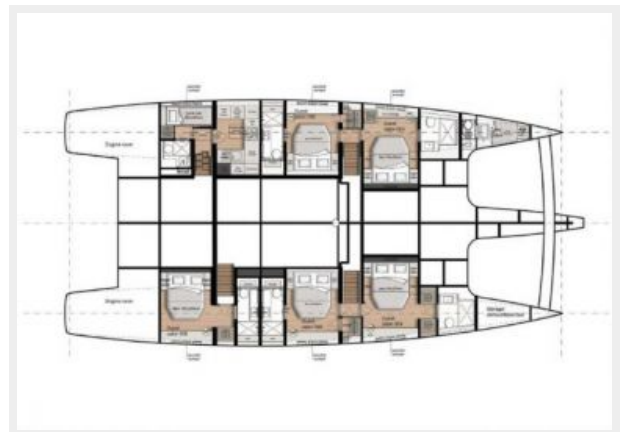


Engine Room



Tender



Upper Deck Layout**Flybridge Layout****Main Deck Layout****Lower Deck Layout**

CONTACTS

Andrey Shestakov, leading yacht broker of the sales department of Shestakov Yacht Sales Inc. Shestakov Yacht Sales Inc., the official representative of the Miami/Fort Lauderdale FL headquarters.

Contact details

Email: **andrey@shestakovyachtsales.com**

Web: shestakovyachtsales.com/en/

Telephones

USA: **+1(954)274-4435**

Office hours

Monday – Saturday: **9:00 - 21:00 EDT**

Sunday: **closed**

Address



Harbour Towne Marina, 850 NE 3rd St,
STE 213, Dania, FL 33004