

WANDER — CHRIS CRAFT



Builder: CHRIS CRAFT

Year Built: 1990

Model: Motor Yacht

Price: PRICE ON APPLICATION

Location: United States

LOA: 40' 0" (12.19m)

Beam: 13' 10" (4.22m)

Max Draft: 2' 9" (0.84m)

Our experienced yacht broker, Andrey Shestakov, will help you choose and buy a yacht that best suits your needs **Wander — CHRIS CRAFT** from our catalogue. Presently, at Shestakov Yacht Sales Inc., we have a wide variety of yachts available on our sale's list. We also work in close contact with all the big yacht manufacturers from all over the world.

If you would like to buy a yacht **Wander — CHRIS CRAFT** or would like help answering any questions concerning purchasing, selling or chartering a yacht, please call **+1(954)274-4435**

TABLE OF CONTENTS

| | |
|------------------------------|----|
| TABLE OF CONTENTS | 2 |
| SPECIFICATIONS | 5 |
| Overview | 5 |
| Basic Information | 5 |
| Dimensions | 5 |
| Speed, Capacities and Weight | 5 |
| Accommodations | 5 |
| Hull and Deck Information | 6 |
| Engine Information | 6 |
| DETAILED INFORMATION | 7 |
| WALKTHROUGH | 7 |
| Electronics | 7 |
| ENGINE & MECHANICAL | 7 |
| DECK | 7 |
| RECENT UPGRADES | 7 |
| DISCLAIMER | 8 |
| Exclusions | 8 |
| Disclaimer | 8 |
| PHOTOS | 9 |
| pic 101 | 9 |
| pic 102 | 9 |
| pic 104 | 9 |
| pic 103 | 9 |
| pic 105 | 10 |
| pic 106 | 10 |
| pic 108 | 10 |
| pic 107 | 10 |
| pic 109 | 10 |

| | |
|---------|----|
| pic 110 | 10 |
| pic 201 | 11 |
| pic 202 | 11 |
| pic 203 | 11 |
| pic 204 | 11 |
| pic 205 | 11 |
| pic 206 | 11 |
| pic 301 | 12 |
| pic 302 | 12 |
| pic 303 | 12 |
| pic 304 | 12 |
| pic 305 | 12 |
| pic 404 | 12 |
| pic 405 | 13 |
| pic 406 | 13 |
| pic 407 | 13 |
| pic 408 | 13 |
| pic 409 | 13 |
| pic 501 | 13 |
| pic 502 | 14 |
| pic 503 | 14 |
| pic 601 | 14 |
| pic 602 | 14 |
| pic 603 | 14 |
| pic 604 | 14 |
| pic 701 | 15 |
| pic 702 | 15 |
| pic 801 | 15 |
| pic 802 | 15 |

| | |
|-----------------|----|
| pic 803 | 15 |
| pic 804 | 15 |
| pic 805 | 16 |
| pic 806 | 16 |
| pic 807 | 16 |
| CONTACTS | 17 |
| Contact details | 17 |
| Telephones | 17 |
| Office hours | 17 |
| Address | 17 |

SPECIFICATIONS

Overview

Clean and well maintained Chris Craft 372 is a compact aft-cabin cruiser with a efficient floor plan and roomy accommodation for its size. Wide side decks making walkaround deck access easy and safe. Hardtop option, bow pulpit and swim platform. "Wander" will be a great looper boat since its completed the journey once and knows the way. Or she would make a great live aboard. ** Low Engine Hours **

Basic Information

Category: Motor Yacht

Sub Category: Aft Cabin

Model Year: 1990

Year Built: 1990

Country: United States

Dimensions

LOA: 40' 0" (12.19m)

Beam: 13' 10" (4.22m)

Max Draft: 2' 9" (0.84m)

Speed, Capacities and Weight

Water Capacity: 65 Gallons

Holding Tank: 40 Gallons

Fuel Capacity: 300 Gallons

Accommodations

Total Cabins: 1

Total Heads: 2

Hull and Deck Information

Hull Material: Fiberglass

Engine Information

Engines: 2

Manufacturer: Mercruiser

Model: 454

Engine Type: Inboard

Fuel Type: Gas/Petrol

DETAILED INFORMATION

WALKTHROUGH

Starting forward is a v-birth. Moving aft is a head to starboard. Dinette to port. Gallery to starboard with an upgraded Suburban gas stove and Vissoni Refrigerator. Magic Chef microwave. Saloon was refurbished 7 years ago, supporting track lighting and quality furniture. Custom shades and blinds. Aft cabin has a recently upgraded memory foam mattress. Electric head with separate show stall. All closet are cedar lined. Replaced headliner on the hardtop over the rear deck in 2018. Fish cleaning station and fridge on the aft deck.

Electronics

Raymarine autopilot (2018)Lowrance depth and fish finder2 VHF radio (Standard & Horizon)AIS receiver EPIRB2 TVsFuel flow meterSmoke & CO alarm

ENGINE & MECHANICAL

New risers and manifolds in 2019New 24 x 24 props in 2020Kohler 8kw gen with sound shield 460 hrs (2018)Gas engine fume alarm6 bilge pumpsFireBoy fire suppression system30 gallon hot water heater (2017)Aft air conditioner 16,00 BTU (2020)Forward air conditioner 16,000 BTU (2017)Dinghy davit system

DECK

Windlass Lewmar 1500 with 100 feet of chain and 200 feet of rodeFortress AnchorRemote spot lightTrim TabsGang plankSwim platformFlybridge BiminiAft deck hardtopDinghy davitscreens on all hatches and windows

RECENT UPGRADES

Port and Starboard engines replacedKohler 8kw gen with sound shield 460 hrs (2018)Eisenglass (2018)Windlass (2017)Sunbrella bimini (2017)Air conditioners (2020 & 2017)Tinted windowsManifolds & risers (2019)Coast Guard Safety Inspection (2019)100 watt solar panel and controller (2017)New seats on the flybridge (2018)Bench seat on the flybridge recovered (2020)New 24 x 24 props (2020)Raymarine autopilot (2018)Gas engine fume alarm (2019)Suburban stoveVissoni refridgeratorMemory foam mattressHot water heater - 30 gallons (2017)Replaced all 12 batteries in 2018Macerator over board pumpNew carburetors New CDI ignitionCarpet to be replaced prior to sale

DISCLAIMER

The Company offers the details of this vessel in good faith but cannot guarantee or warrant the accuracy of this information nor warrant the condition of the vessel. A buyer should instruct his agents, or his surveyors, to investigate such details as the buyer desires validated. This vessel is offered subject to prior sale, price change, or withdrawal without notice.

Exclusions

Owner's personal belongings.

Disclaimer

The Company offers the details of this vessel or yacht in good faith but cannot guarantee or warrant the accuracy of this information nor warrant the condition of the vessel. A buyer should instruct his representatives, agents, or his surveyors, to investigate such details as the buyer desires validated. This vessel or yacht is offered subject to prior sale, price change, or withdrawal without notice.

PHOTOS

pic 101



pic 102



pic 104



pic 103



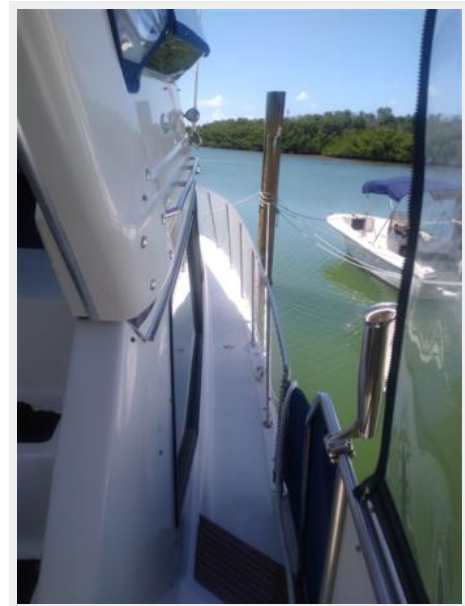
pic 105



pic 106



pic 108



pic 107



pic 109



pic 110



pic 201



pic 202



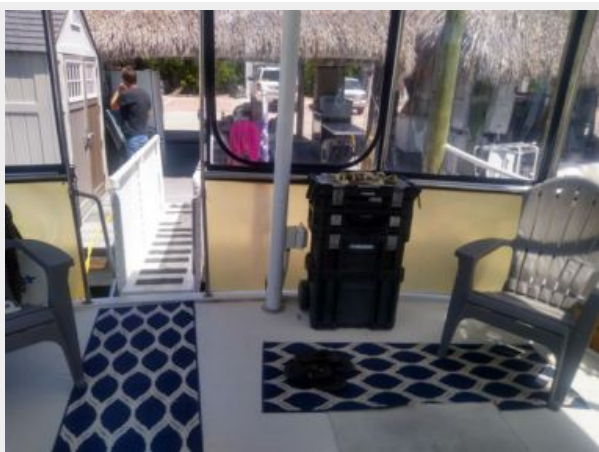
pic 203



pic 204



pic 205



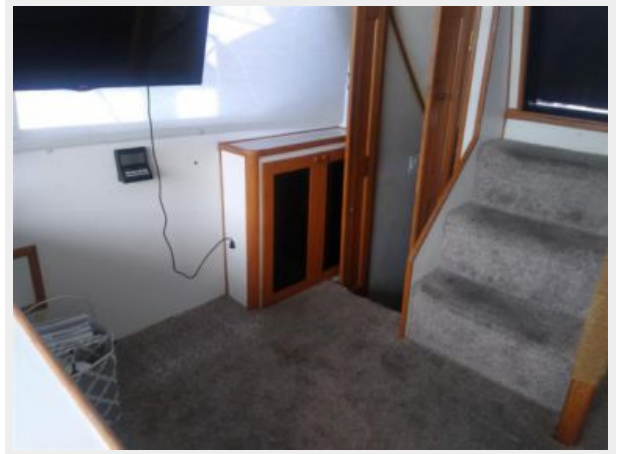
pic 206



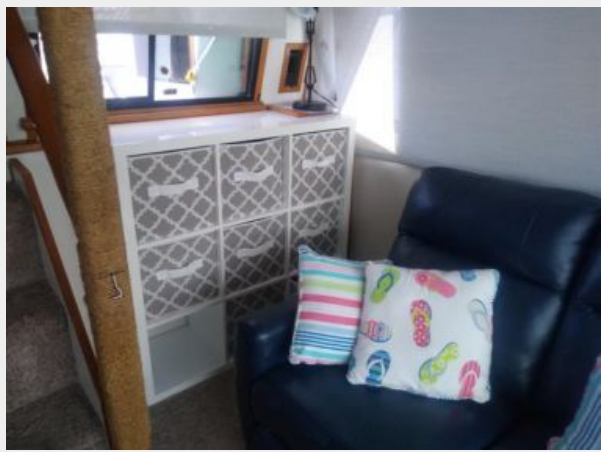
pic 301



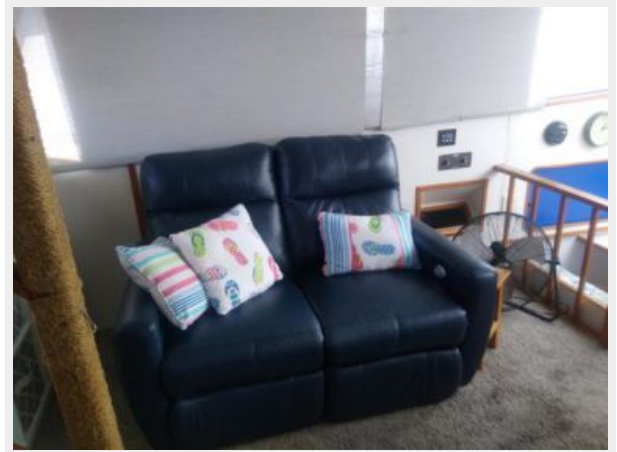
pic 302



pic 303



pic 304



pic 305



pic 404



pic 405



pic 406



pic 407



pic 408



pic 409



pic 501



pic 502



pic 503



pic 601



pic 602



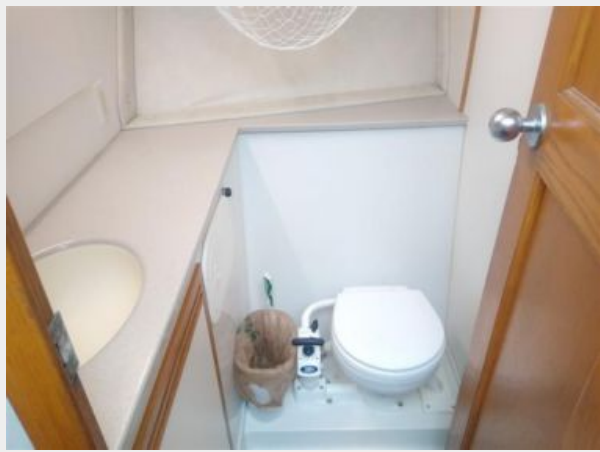
pic 603



pic 604



pic 701



pic 702



pic 801



pic 802



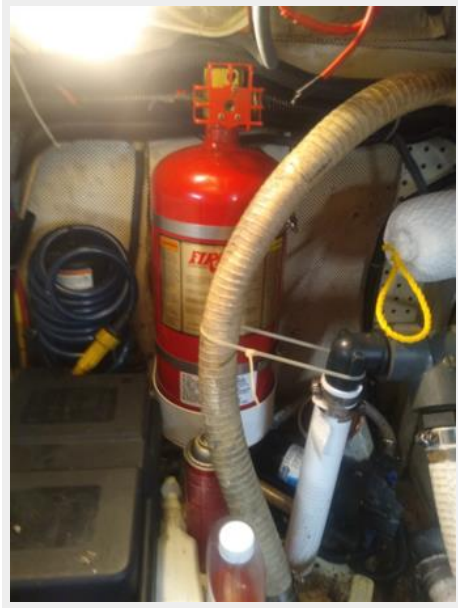
pic 803



pic 804



pic 805



pic 806



pic 807



CONTACTS

Andrey Shestakov, leading yacht broker of the sales department of Shestakov Yacht Sales Inc. Shestakov Yacht Sales Inc., the official representative of the Miami/Fort Lauderdale FL headquarters.

Contact details

Email: andrey@shestakovyachtsales.com

Web: shestakovyachtsales.com/en/

Telephones

USA: +1(954)274-4435

Office hours

Monday – Saturday: **9:00 - 21:00** EDT

Sunday: **closed**

Address



Harbour Towne Marina, 850 NE 3rd St,
STE 213, Dania, FL 33004