

NARWHAL — CHERUBINI



Судостроитель: CHERUBINI

Год постройки: 1986

Модель: Крейсерская яхта

Цена: **ЦЕНА ЯХТЫ ПО ЗАПРОСУ**

Местонахождение: United States

Длина общая: 48' 0" (14.63m)

Ширина: 13' 0" (3.96m)

Макс. осадка: 5' 2" (1.57m)

Крейс. скорость: 7 Kts. (8 MPH)

Купить **NARWHAL — CHERUBINI** а также выбрать подходящую вам яхту из нашего каталога яхт вам поможет опытный яхтенный брокер Андрей Шестаков. На сегодняшний день компания **Shestakov Yacht Sales Inc.** имеет большое количество яхт в собственном списке продаж, а также тесно сотрудничает со всеми крупными яхтенными производителями по всему миру.

Для того чтобы купить яхту **NARWHAL — CHERUBINI** а также проконсультироваться по любому вопросу связанному с покупкой, продажей, чартером яхт позвоните по телефону **+7(918)465-66-44**.

ОГЛАВЛЕНИЕ

ОГЛАВЛЕНИЕ	2
ХАРАКТЕРИСТИКИ	5
Обзор	5
Основная информация	5
Размеры	5
Скорость, вместимость и масса	5
Размещение	6
Корпус и палуба	6
Информация о двигателе	6
ПОДРОБНОЕ ОПИСАНИЕ	7
INTRODUCTION	7
ACCOMMODATIONS OVERVIEW (Starting Forward)	8
ACCOMMODATIONS DETAILS and TECHNICAL DESCRIPTIONS	9
REFIT (2013-2015)	11
ELECTRICAL SYSTEM	12
LIGHTING	12
ELECTRONICS and COMMUNICATIONS EQUIPMENT	13
ENGINE ROOM and MECHANICAL EQUIPMENT	13
CONSTRUCTION	14
TANKAGE	14
DECK HARDWARE and EQUIPMENT	14
COCKPIT	15
RIG and RIGGING	16
SAILS and CANVAS	16
SAFETY EQUIPMENT	16
EXCLUSIONS	17
Исключения	17
Отказ от ответственности	17

ФОТОГРАФИИ	18
Salon, Looking Fwd.	18
Salon, to Port	18
Salon, to Starboard	18
Salon, Starboard	18
Salon, Looking Aft	18
Aft Double Berth	18
Aft Head and Stall Shower	19
Aft Cabin, Looking Fwd.	19
Nav Station	19
Galley, Looking Aft	19
Galley Counter Tiles	20
Galley to Salon	20
Bowsprit	20
Foredeck	20
Foresail Boom	20
Cabin Top, Looking Fwd.	20
Cabin Top, Looking Aft	21
Varnished Cabin Sides	21
Cockpit Dodger and Bimini	21
Cockpit to Stbd.	21
Wheel	21
Port Fwd. Qtr.	21
Port Beam	22
Port Qtr.	22
Port Engine Room, Looking Aft	22
Starboard Quarter	22
Starboard Utility, Looking Aft	22
КОНТАКТЫ	23

Контактная информация	23
Телефоны	23
Время работы	23
Адрес	23

ХАРАКТЕРИСТИКИ

Обзор

Gorgeous to look at and even more fun to sail, NARWHAL benefits from a substantial refit (2014) with virtually every mechanical and electrical system replaced. Newer engine with very low hours. Her combination of shoal draft, spirited performance, a well-balanced helm and easy sail handling along with drop-dead gorgeous lines make for a truly iconic design and unique offering.

Основная информация

Тип судна: Крейсерская яхта

Подкатегория: Шхуна

Модельный год: 1987

Год постройки: 1986

Год обновления: 2014

Вид обновления: New engine, refrigeration, AC and electrical systems

Страна: United States

Верх: Bimini Top

Кубрик: Да

Размеры

Длина общая: 48' 0" (14.63m)

Длина по ватерлинии: 44' 0" (13.41m)

Ширина: 13' 0" (3.96m)

Макс. осадка: 5' 2" (1.57m)

Трапы: 64' 0" (19.51m)

Скорость, вместимость и масса

Крейс. скорость: 7 Kts. (8 MPH)

Водоизмещение: 39000 Pounds

Вместимость воды: 160 Gallons

Вместимость сточного бака: 80 Gallons

Объем топливного бака: 167 Gallons

Размещение

Всего кают: 2

Всего коек: 3

Спальные места: 6

Всего ком. состава: 2

Корпус и палуба

Материал корпуса: Fiberglass

Материал палубы: Nonskid painted

Цвет корпуса: Aristo Blue

Отделка корпуса: Aluminum

Дизайнер корпуса: John E. Cherubini

Информация о двигателе

Двигатели: 1

Производитель: Yanmar

Модель: 4JH4-HTE1

Тип двигателя: Inboard

Тип топлива: Diesel

ПОДРОБНОЕ ОПИСАНИЕ

INTRODUCTION

NARWHAL is an iconic 48' Cherubini Schooner. Her clipper bow with bowsprit, schooner rig, low freeboard and raised bulwarks aft, along with varnished teak cabin trunk sides, are reminiscent of L. Francis Herreshoff's TICONDEROGA as ably interpreted by John Cherubini. She is a proven performer in near coastal waters, on the racecourse and crossing oceans. Her combination of shoal draft, spirited performance, a well-balanced helm and easy sail handling, along with drop-dead gorgeous lines, make her a true standout.

NARWHAL has a beautiful Aristo Blue hull with a wide white shear stripe, matching single white boot stripe and red bottom. Her cabin top and decks are painted Moondust non-skid with gloss white waterways; cabin house sides with teak eyebrows, trim, handrails, toe rails and cockpit helm seating are in varnished bright teak. Her spars are painted to match the non-skid decks, and her canvas is off-white.

Below decks is a world unto itself: Comfortable, traditional and seaman-like with plenty of light and ventilation, and storage befitting a proper cruising yacht. Mahogany joinery with raised-panel bulkheads and hull ceilings painted white in the Herreshoff style frame her living quarters beautifully.

NARWHAL has cruised both the Atlantic and Pacific oceans, but in recent times has been U.S. east coast-based. In the last seven years, she has seen only seasonal use in New England, with indoor heated storage the norm, and professional service by Niemec Marine of New Bedford and The Concordia Company of South Dartmouth, Massachusetts.

NARWHAL has benefited from extensive refitting during her present ownership -- primarily in 2013/2014 -- with details to be found in the listing below, including a new Yanmar diesel, refrigeration, A/C and a completely new electrical system with all new wiring, chargers etc. She is a well-found yacht and a must-see for anyone seriously considering a Cherubini Schooner. There is good reason why this builder and design were included in Ferenc Mate's seminal work "The World's Greatest Sailboats." Come see for yourself! We invite your inspection.

Professional Video available.

ACCOMMODATIONS OVERVIEW (Starting Forward)

Large single-berth cabin forward with overhead hatch for light and ventilation, which is large enough to pass sails through. Next aft to port is an enclosed head with en-suite shower. A bulkhead and door are aft and provide privacy for the head and cabin forward of the mast.

Aft of the mast is the spacious salon which features a lovely mahogany table (center storage and matching lift-outs) with folding leaves, and a shallow U-shaped settee to port. A snug offshore-ready pilot berth is outboard to port, with its own non-opening hull port for light and a view. Across from the table to starboard is a straight settee that doubles as an additional sea berth with lee cloth. Bronze plaques from the Dunhill San Fernando Race in 1995 and the South China Sea Race in 1996 attest to the true globetrotting nature of this capable design and the miles NARWHAL cruised in her “early teens”!

There is a large butterfly hatch overhead in the salon; numerous custom Cherubini-designed and -built opening ports, and raised-panel bulkheads painted satin white with exquisite mahogany and teak joinery in the form of deck beams. Substantial knees, handholds, fiddles, cabinetry and ceiling trim offset the white panels on the overhead, lockers and countertops, all in the Herreshoff style. The soles throughout the boat are of teak and holly and varnished bright.

The U-shaped galley is aft to port, and while still a part of the salon, is offset by overhead custom cabinetry. Large undercounter refrigerated iceboxes are located forward, with beautiful inset tilework depicting the yacht. The sea-going stove and oven are located outboard and the twin sinks are aft. There is plenty of counter space and storage in this working galley.

Across from the galley to starboard is another huge insulated icebox with shelf on top. A good-sized hanging locker is just forward, also with storage on top and large shelf above.

Moving aft from the galley and salon, a passageway leads by the master head with separate stall shower to starboard, and through a doorway into the aft cabin and nav area, with proper forward-facing nav table and chair on a swivel.

The aft cabin features a large double berth offset to port. This is a lovely space with hull staving and an additional hull port, a wrap-around shelf at the head of the berth and bronze ocean Frigast reading lamps. Inboard of the berth is a large counter top for all manner of storage. The cabinetry

space forward of the berth allows for built-in drawers and double-fronted hanging lockers behind. There is another large counter, this one in solid mahogany. All of the lockers throughout the yacht have cane doors with wood trim for ventilation and a classic look. There is a small settee at the forward end of the cabin with large mirror mounted on the bulkhead. The aft cabin may be closed off from the rest of the boat with bi-fold raised-panel doors. Ventilation and light are provided by opening ports in the deckhouse. There is a ceiling-mounted compass above the berth, overhead lights and solid handholds, which double as gutters along the cabin trunk base here and throughout the yacht, sculpted to be comfortable to grip.

The navigation station is to starboard with a full complement of updated electronics. This is a snug spot for the navigator, situated next to the companionway leading up to the cockpit.

Aft of the nav station a door opens into a passageway leading aft into the machinery space and engine room, with access from a large hatch in the cockpit as well. There is lots of useful storage built-in outboard.

ACCOMMODATIONS DETAILS and TECHNICAL DESCRIPTIONS

FORWARD STATEROOM

- Oversized single berth
- Hanging locker with shelf above, drawer and pull-down stowage with shelf above, with fiddle
- Large storage locker to port; big enough for sails
- Shelf across front and starboard hull side; reading lamp and (2) overhead lights
- Hella 12v fan; AC control; opening port; large overhead hatch
- 110v outlets

FORWARD HEAD

- Opening port
- Tile sole and tile backsplash
- Teak shower drain, and sump with electric pump-out
- Bronze towel racks
- Pressure water hot and cold with fitting for deck shower; spigot for manual pump as backup; soap spigot
- Ample lockers and storage
- Skipper manual head plumbed with fresh water; Y-valve; custom holding tank; Sealand

vent filter

SALON

- Large butterfly hatch
- Royal blue synthetic leather cushions with matching pillows
- Table with folding leaves to seat six with center storage lockers
- Port and Starboard settees with storage beneath and outboard
- Port and Starboard Mahogany lockers with shelf tops; caned lockers outboard and above
- Brass decorative mounts for (2) gimbaled lanterns on forward bulkhead
- Bulkhead-mounted stereo speakers
- Wood staving on hull sides
- Hanging wet locker starboard aft of settee

GALLEY

- Specially-designed pull-out spice cabinet
- Undercounter refrigerated ice boxes; freezer outboard with (2) cold plates; reefer inboard with single stainless cold plate and additional insulated ice box across to starboard
- Princess Gourmet II 3-burner propane stove with oven
- Bronze protective sheet under cabinetry above stove
- Trash bin under counter, with lid
- Twin deep stainless sinks
- Opening hatch and opening port
- LED undercabinet lighting for countertops (new, fall 2019)
- Ample drawers and lockers
- Seagull Pure Water tap for filtered drinking water
- Freshwater tap with foot pump
- Jabsco 82500 5 gpm house fresh water pump
- Jabsco 82500 5 gpm salt water pump for washdown on bow
- Rule sink drain pump
- Horizontal (wine) bottle storage in cabinet hung from overhead
- Locker doors: mahogany joinery with cane panels and wood dowel catches

MASTER STATEROOM

- (2) Hanging wardrobes
- Set of drawers
- Settee
- Henderson manual bilge pump

- Custom mattress (new, 2014)
- AC vent
- Rotary battery switches side of berth; emergency parallel
- Chart light on long arm; swivel reading lamp; 110v outlets
- Hella 12v 2-speed fan
- AC control
- Wempe chronometer
- Danforth gimbaled compass, mounted on overhead above foot of berth

MASTER HEAD

- White tile soles
- Separate shower with teak bench seat; opening port; teak drain grate and sump pump; storage cabinet outboard
- Stainless sink with hot and cold taps; soap dispenser and blue tile backsplash
- Overhead hatch
- Raritan Elegance electric head with push button controls; salt or fresh water
- Ample lockers beneath sink and outboard
- 110v GFCI outlets

NAVIGATION STATION AND MACHINERY ROOM

- Built-in navigation station with L-shaped table and pull-out drawer
- Built-in shelf with fiddle below
- Swing-out seat

REFIT (2013-2015)

As referenced earlier in the listing, NARWHAL underwent an extensive \$300,000 refit in 2013/14 with particular emphasis on all mechanical and electrical systems, which were removed from the vessel. Virtually all of the mechanical and electrical systems, including all new electronics (excluding the generator which was replaced in 2019), were replaced new at that time. The handful of items that were not replaced new, such as the bow thruster, were rebuilt or refurbished as needed. Follows is a partial list of highlights:

- Masts re-wired with new: radar mount, lights, windex, wind instruments, lighting protection and complete check of all fittings, stainless mast steps reconditioned
- Watermaker: entire system replaced new in 2013 (currently not in service)
- Refrigeration/freezer: all new Sea Frost system, including modifications to ice boxes and addition of divider; plumbing, dryers etc.
- Electrical complete re-design: all new wiring both 12v/24v; new electrical panels, breakers,

- switches, batteries and battery boxes, grounding and bonding, copper strapping, DynaPlate, bow thruster panel, chargers, inverter, outlets, battery monitor
- All pumps replaced new: shower drain, bilge (manual and electric), AC, house water, watermaker, washdown, macerator, sink drain etc.
 - Many new light fixtures, some LED
 - Mechanical new items: engine, engine beds, cutlass bearing, CV shaft, thrust bearing, Aqua Drive, FRP exhaust tube, custom exhaust riser, upgraded exhaust hose to 3", vented loops, modified muffler design, engine and Gen thru hull strainers, sea strainers, max prop rebuilt, tank monitors, water heater, Accumulator tank, oil change system, washdown pump, Soundown insulation
 - Engine room painted
 - All new thru-hulls and seacocks
 - Black water re-design included new custom poly holding tank (approx. 80 gallons) amidships to service both heads, all new plumbing, new macerator pump, new salt water pump for aft head
 - Raritan Elegance electric head aft
 - (2) Air conditioners, ducting, plumbing
 - Bow thruster rebuilt; new motors, batteries, 24v charger, Lexan cover
 - New Worley custom mattress aft; all new interior cushions and upholstery
 - New Princess LPG stove/oven
 - Electronics refit including GPS, HD radar, autopilot, sailing instruments, stereo

ELECTRICAL SYSTEM

- All batteries new 2013: house bank of (6) 8D 12v AGM batteries under aft berth, 105 Ah each for total of 630 amp hours
- (2) 8D 24v AGM 90 Ah bow thruster batteries, forward under V-berth
- 12-volt /95 Ah engine start battery (new, 2013)
- 12-volt /95 Ah generator start battery (new, 2013)
- Mastervolt 24/30-3; 24 v bow thruster battery charger (120 Ah at 24-volt) (new, 2013)
- Mastervolt MASS 12/2000 sine wave inverter with remote control
- Mastervolt Chargemaster 12/70-3 automatic battery charger
- Mastervolt battery isolator
- Mastervolt BTM-III battery monitor
- (2) Hubbell 30amp shore power plugs; Quicksilver 50amp galvanic isolator;
- Blue Sea Systems 12v DC and 120 v AC panels
- Blue Seas 24v meter for bow thruster batteries (toggle switch for on/off)

LIGHTING

- (2) Bronze gimbaled lanterns, mounted on forward bulkheads in salon
- Ocean Frigast reading lights

- Spreader deck lights; both masts (new, 2014)
- Steaming light
- Mast head/tricolor light
- (2) Chart lights at nav station
- LED under-counter lights in galley (new, fall 2019)
- LED lighting above engine and in machinery spaces (new, fall 2013)

ELECTRONICS and COMMUNICATIONS EQUIPMENT

- Garmin GPS map 7212 GPS/radar plotter at nav station
- Icom IC-M504 VHF marine radio at nav station
- Icom IC M700 SSB marine radio with Icom AT-140 automatic antenna tuner (inoperable)
- Fusion MS-NRX300 stereo control
- USB plug with waterproof cover
- Weems and Plath bronze clock and barometer
- (2) Teak handheld VHF holders
- Teak corner shelf, teak shelf/cubby forward and outboard

At Helm:

- Garmin GPS map 721, mounted in a NavPod above wheel
- Garmin autopilot interface port pedestal (new, 2018/19)
- Garmin sailing instrument, starboard pedestal (new, 2018/19)
- Edson pedestal, painted white, with wheel lock
- Garmin autopilot hydraulic ram (new, 2018/19)
- Garmin HD closed-array antennae, mounted on foremast
- Danforth Constellation compass on pedestal
- 8-pin plug (inoperable)
- Icom Command MIC II remote VHF at port helm
- Toggle switch (inoperable)
- Airmar thru-hull Smart Sensor
- Bronze thru-hull with removable paddlewheel
- Garmin GPS antennae on boom gallows

ENGINE ROOM and MECHANICAL EQUIPMENT

- Yanmar 4JH4-HTE1 4-cylinder turbo diesel engine, 112hp. Full start panel at helm and remote panel at nav station
- Tank tender gauge
- Prop shaft aperture (rebuilt, 2018/19)
- Cutlass bearing (new, 2018/19)
- Standard Yanmar alternator; 55 amp
- Phasor 8kW generator (new, 2014) with Kubota diesel (replaced new, 2018) (57 hours,

Dec. 2019)

- Vetus bow thruster; joystick below helm with stainless guard
- Racor model 75-500 dual fuel filters with crossover valve and vacuum gauge
- Fuel tank (165 gallon) FRP integral beneath main engine
- Three-blade Max Prop
- Flexible prop shaft link to absorb vibration
- Dometic Marine Air AC/reverse-cycle heat aft (8,000 BTU) with “Smartstarter”, vented to nav station and aft cabin
- AC forward (16,000 BTU), vented to starboard salon and forward cabin
- Watermaker: Newport 400 MKII 17-gph (new, 2013/14) (currently not in service)
- Force 10 stainless water heater (16 gallon), 110v element plus engine heating
- Automatic fire extinguisher in engine room: Fireboy, with display at helm
- Reverso oil change system: engine and generator

CONSTRUCTION

The hull and cockpit hand laid fiberglass with Vinylester Resin. The decks and cabin house are wood and fiberglass; painted nonskid on top, solid teak sides and eyebrow; teak handrails; teak companionway hatch hood. Painted non-skid decks with high-gloss painted waterways in white. All bulkheads are glassed into the hull and deck on both sides for maximum strength.

TANKAGE

- Fiberglass fuel tank on centerline aft beneath engine and cockpit (167 gallons)
- (2) Water tanks; aluminum (80 gallons apiece)
- Custom holding tank amidships (approx. 80 gallons)
- (2) Propane, aluminum (TW 10; WC 23.8; DT 4.0)

DECK HARDWARE and EQUIPMENT

- CQR 60# plow anchor on roller with all-chain rode on teak and bronze bow sprit with stainless bow pulpit. 40# plow on port roller with approx. 30' chain to braided rope rode
- Dual capstan upright windlass
- Anchor lockers with flush foredeck hatches each side of windlass
- Fisherman storm anchor; stowed securely on foredeck in sections along bulwarks
- Dorade vent and deck prism for aft head
- Matching dorade vents with removable round stainless cowls just aft of foremast (1) for forward cabin, (1) for salon
- Nicro Fico solar vent for aft shower
- Teak hand rails on cabin top
- Mooring lines

- Fenders
- (2) Decorative dolphins on bulwarks
- Stanchions and lifelines: Stainless tube bow pulpit on bowsprit; solid stainless stanchions. Dyform stainless double life lines
- Hatches: Custom main salon teak butterfly hatch; galley, head and foredeck opening hatches
- Opening Ports: Cherubini custom solid bronze opening ports
- (6) Cleats: cast stainless steel, Herreshoff style
- (10) Chocks: cast “closed” in bulwarks
- Custom bronze and teak main boom gallows
- Swim ladder: stainless with teak steps at port stanchion gate

COCKPIT

Access is excellent under helm seat to quadrant (rudder stops were re-glassed in 2017) and autopilot ram. Dual-lever engine controls on pedestal. Large cockpit forward with wide and long seats, good for lying down. Wide, raised bridge deck across the front of the cockpit. Teak companionway is offset to starboard, with smoked Lexan hatch board.

Fold-down table, cockpit coamings, traditional spoked wheel, pedestal storage cubbies and helm bench seating (raised on center) are all varnished teak.

- Stainless pedestal guard/handrail with NavPod attached
- Chromed binnacle with six-sided glass cover for Danforth compass
- Stainless safety rail, aft cockpit above coaming
- Engine panel (primary)
- Fireboy engine room extinguisher indicator below thruster control
- Vetus bow thruster joystick control below wheel to starboard, with stainless guard
- Secondary VHF port helm
- Rod holder for trolling
- Aluminum pedestal supports for sailing instrument and autopilot
- Port cockpit storage locker
- Propane locker forward cockpit on centerline
- Stereo speakers
- Large lazarette for storage
- Dodger with stainless grab bar and large center-opening panel
- Bimini above helm: (2) clear plastic windows with roll-up covers
- Filler piece connects bimini to dodger
- Starboard cockpit access to engine room
- Bronze and teak gallows for boom, with grab handles built-in each corner
- Cockpit cushions are Royal Blue Sunbrella

RIG and RIGGING

- Aluminum double-spreader masts and booms, Awlgrip painted
- Mainsail and foresail sheets both lead aft under dodger to winches in the cockpit
- Foresail is self-tacking, with traveler control lines leading aft
- Harken furling headstay reef line led aft to cockpit starboard winch
- Navtec stainless discontinuous rod rigging, stainless closed-barrel turnbuckles, Navtec fittings, removable 1x19 stainless wire inner forestay
- Braided polyester sheets and halyards, 1x19 stainless wire running backstays to braided line purchase system
- Mast steps, stainless, mounted on keel
- Harken main and foresail travelers; Schaeffer mainsheet and deck blocks; Merriman jib lead cars; Lewmar Spinlock line clutches; Antal line clutches on booms
- Stainless tracks on toe rails: pair forward and second pair start amidship and extend all the way to the stern. Short track on deck inside shrouds
- Chainplates: Stainless U-bolts bolted through deck to fabricated stainless angle irons bolted through hull to deck flange with overlapping inverted F.R.P. hanging knees glassed into hull sides

SAILS and CANVAS

- Mainsail (new, 2017): Doyle Stackpack with lazyjacks. Fully-battened with Tides Marine batten stainless slides
- 140% genoa; 100% yankee jib; fisherman staysail; fore staysail; storm jib; storm trysail; cruising spinnaker
- Sunbrella canvas: dodger, bimini, filler piece between, sail covers, helm cover, hatch covers, life raft cover (all new 2017/2018)

WINCHES:

- (2) Lewmar 52 ST
- Lewmar Mainmast 46ST, 40ST, (1)16ST;
- (2) Foremast 40ST
- Lewmar 48 ST mainsheet winch, starboard companionway
- Lewmar 40 ST foresail winch, port companionway
- (2) Lewmar 46 ST Primary genoa sheet winches cockpit

SAFETY EQUIPMENT

- EPIRB, ACR, mounted near base of mainmast
- Ring buoy
- Fireboy automatic fire extinguisher in engine room

- (2) Portable fire extinguishers
- (2) Manual bilge pumps; Large Edson pump in cockpit; Henderson pump below, next to companionway and aft berth
- Rule 2000 electric bilge pump under companionway
- Offshore covers for all opening ports
- Wood plugs for thru-hulls attached in bilge
- Stainless padeye in port companionway for harness tether hookup
- Jacklines
- Drogue
- Emergency tiller, stainless, starboard lazarette

EXCLUSIONS

The owner's personal effects are excluded from the sale.

Исключения

При продаже яхты исключаются личные вещи владельца.

Отказ от ответственности

Компания предоставляет описание судна или яхты добросовестно, но не может гарантировать точность этой информации, а также не ручается за техническое состояние. Покупатель должен проинструктировать своих агентов или оценщиков исследовать представленную информацию более подробно, по собственному желанию. Продажа судна или яхты, изменение цены или снятие с продажи будет происходить без предварительного уведомления.

ФОТОГРАФИИ

Salon, Looking Fwd.



Salon, to Port



Salon, to Starboard



Salon, Starboard



Salon, Looking Aft



Aft Double Berth



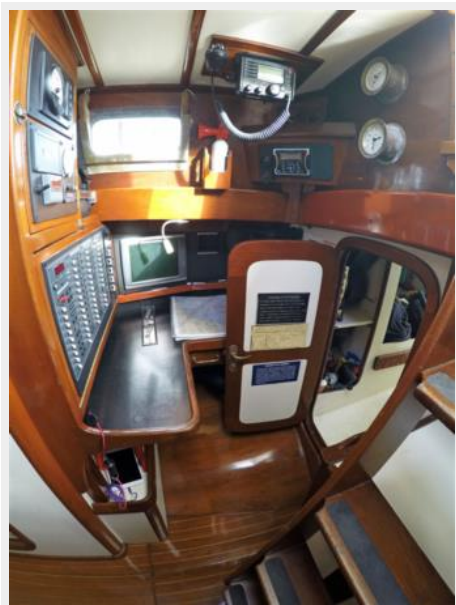
Aft Cabin, Looking Fwd.



Aft Head and Stall Shower



Nav Station



Galley, Looking Aft



Galley to Salon



Galley Counter Tiles



Bowsprit



Foredeck



Foresail Boom



Cabin Top, Looking Fwd.



Cabin Top, Looking Aft



Varnished Cabin Sides



Cockpit Dodger and Bimini



Cockpit to Stbd.



Wheel



Port Fwd. Qtr.



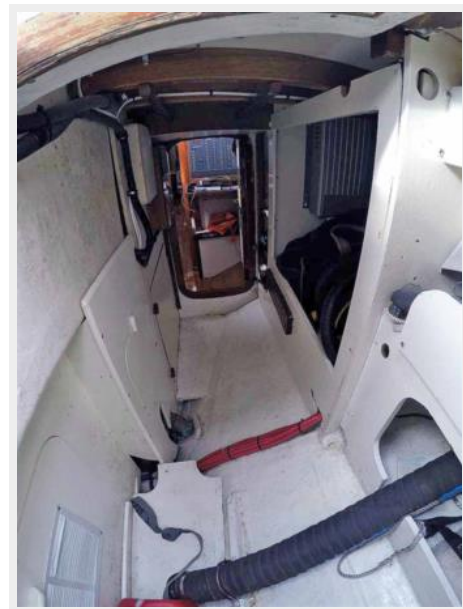
Port Beam



Port Qtr.



Port Engine Room, Looking Aft



Starboard Quarter



Starboard Utility, Looking Aft



КОНТАКТЫ

Андрей Шестаков (Andrey Shestakov) – ведущий яхтенный брокер отдела продаж яхт и судов компании Shestakov Yacht Sales Inc. Официальный представитель Shestakov Yacht Sales Inc. для русскоговорящих клиентов в центральном офисе компании в Майами/Форт Лодердейл/Флорида/США.

Контактная информация

Email: andrey@shestakovyachtsales.com

Web: shestakovyachtsales.com

Телефоны

Краснодарский край: **+7(918)465-66-44**

США, Майами, Флорида: **+1(954)274-4435**

Время работы

Понедельник – Суббота: **9:00 - 21:00**
EDT

Воскресенье: **Закрето**

Адрес



Harbour Towne Marina, 850 NE 3rd St,
STE 213, Dania, FL 33004