

WESTWAY — INTREPID POWERBOATS INC.



Судостроитель:
INTREPID POWERBOATS INC.

Год постройки: 2019

Модель: Моторная яхта

Цена: ЦЕНА ЯХТЫ ПО ЗАПРОСУ

Местонахождение: United States

Длина общая: 41' 0" (12.50m)

Ширина: 12' 6" (3.81m)

Макс. осадка: 2' 5" (0.74m)

Купить Westway — INTREPID POWERBOATS INC. а также выбрать подходящую вам яхту из нашего каталога яхт вам поможет опытный яхтенный брокер Андрей Шестаков. На сегодняшний день компания Shestakov Yacht Sales Inc. имеет большое количество яхт в собственном списке продаж, а также тесно сотрудничает со всеми крупными яхтенными производителями по всему миру.

Для того чтобы купить яхту Westway — INTREPID POWERBOATS INC. а также проконсультироваться по любому вопросу связанному с покупкой, продажей, чартером яхт позвоните по телефону **+7(918)465-66-44**.

ОГЛАВЛЕНИЕ

ОГЛАВЛЕНИЕ	2
ХАРАКТЕРИСТИКИ	5
Обзор	5
Основная информация	5
Размеры	5
Скорость, вместимость и масса	5
Размещение	5
Корпус и палуба	6
Информация о двигателе	6
ПОДРОБНОЕ ОПИСАНИЕ	7
Brokers's Comments	7
Manufacturer Provided Description	7
Electronics Package	8
Factory Options and Upgrades	8
Performance	9
Construction	10
Mechanical	10
Head/Shower	10
Cockpit/Aft Deck	11
Galley	11
Exterior	11
Electrical	12
Bridgedeck	12
Cabin	13
Исключения	13
Отказ от ответственности	14
ФОТОГРАФИИ	15
01-9273340	15

10-9273339	15
14-9273364	15
08-9273376	15
07-9273362	15
02-9273345	15
03-9273353	16
11-9273371	16
13-9273381	16
21-9273350	16
79-9273352	16
82-9273380	16
19-9273317	17
76-9273312	17
39-9273308	17
40-9273304	17
44-9273325	17
33-9273302	17
37-9273294	18
35-9273300	18
27-9273297	18
24-9273329	18
25-9273328	18
26-9273331	18
28-9273326	19
29-9273320	19
31-9273319	19
30-9273327	19
32-9273316	19
49-9273315	19

69-9227884	20
58-9227986	20
61-9227894	20
60-9228005	20
63-9228003	20
65-9227826	20
66-9227825	21
64-9227840	21
75-9227963	21
72-9227960	21
73-9227987	21
47-9273288	21
78-9273343	22
КОНТАКТЫ	23
Контактная информация	23
Телефоны	23
Время работы	23
Адрес	23

ХАРАКТЕРИСТИКИ

Обзор

WESTWAY is a Beautiful Low Hour 410 Intrepid Evolution Custom Ordered with All the Right Equipment!

For Sale By Her Original Owners

Fast, Shallow Draft and Nimble Cruising Yacht

Comfort For Extended Stays Aboard

Основная информация

Тип судна: Моторная яхта

Модельный год: 2019

Год постройки: 2019

Страна: United States

Размеры

Длина общая: 41' 0" (12.50m)

Ширина: 12' 6" (3.81m)

Макс. осадка: 2' 5" (0.74m)

Скорость, вместимость и масса

Вместимость воды: 80 Gallons

Объем топливного бака: 449 Gallons

Размещение

Всего кают: 1

Всего коек: 1

Всего ком. состава: 1

Корпус и палуба

Материал корпуса: Fiberglass

Комплектация корпуса: Deep Vee

Дизайнер корпуса: Intrepid Yachts

Информация о двигателе

Двигатели: 3

Производитель: Suzuki

Модель: Dual Prop

Тип двигателя: Outboard

Тип топлива: Gas/Petrol

ПОДРОБНОЕ ОПИСАНИЕ

Brokers's Comments

I am pleased to present this gorgeous 2019 410 Intrepid Evolution "WESTWAY" for sale. Having personally run her for the photoshoot I can say that she is a real joy to run- she comes up on plane very easy, has a great riding angle and handles like a sports car. With a cruising speed range up to 40mph with a 400 mile range she is perfect for lazy days at anchor or to blast to the keys or Bahamas and back in no time without a bunch of fuel stops.

The 350hp Suzuki engines with counter rotating propellers have more low end-torque than the comparable Merc or Yamaha engines with single propellers, I think they are an excellent match to the vessel and were recommended by Intrepid as the optimal power package.

The helm deck has an incredible layout that is very comfortable and spacious, and very importantly has a ton of A/C vents that keep you cool, and a big sunroof with opening side windows to smell the sea air when desired.

The cabin is comfortable enough for longer stays aboard for couples or small families, providing luxurious accommodations that enable you to stay onboard and not be looking for the next marina with a hotel- which in this size and speed range is rare.

From the weekend warrior to the great looper- this Intrepid 410 Evolution can do it all in style!

With the current Intrepid factory wait time of a year +, this 2019 late model will get you out enjoying the water right away while saving big over a new build

*one great note here is how awesome the Intrepid factory has been to work with- they are super responsive to answer any questions I have and their customer service is top notch- that is hard to find in today's world and is one of the most undervalued and overlooked attributes boat shoppers should be considering

Manufacturer Provided Description

An exquisitely crafted byproduct of 30 years of evolution and 2 years of design, the 410 Evolution has pushed the class of high-end yachts to a new uncharted plateau. This is a 41.19-foot display of power, stability and maneuverability with its revolutionary step hull design and triple outboard engines that don't sacrifice an inch of cockpit space for performance. The cockpit itself features an electronic sunroof, and perfectly sculpted and innovatively designed helm seating that converts to create more open seating and conversational space. For diving and swimming, an integrated hullside dive door with a foldout ladder is located starboard. Relax in a cabin adorned with a queen berth mattress, custom u-shaped settee, a stainless steel refrigerator/freezer, electric cooktop and microwave with wood veneered cabinetry throughout. There is even an electronic dinette with wooden surface that lowers to create an additional berth.

Electronics Package

- 2x Garmin 7616 16" Navigation Systems
- Florida G2 Vision Chart Cards
- Garmin 1kw B164 Transducer
- Garmin GMI 20 Multi Function Marine Display
- Airmar Depth/Temp Display
- Radar, Garmin GMR Fantom 4' Array Antenna w/Pedestal
- Garmin GXM53 Sirius Weather Antenna
- Garmin AIS 600 Transceiver
- Garmin GHC20 Autopilot
- ICOM M400BB VHF Radio
- FLIR MD-625 Thermal Camera
- ACR RCL-100LED Remote Spotlight
- GOST Tracking System
- Fusion Head unit with JL Speakers, Amps and Subwoofers (ITS LOUD AND SOUNDS GREAT!!!)

Factory Options and Upgrades

- Triple Suzuki 350hp Outboard Engines with Dual Counter Rotating Propellers (195 Engine Hours)
- Joy Stick Docking System
- Engines Painted IMRON White
- U-Flex Power Assist Steering w/Tilt Helm Wheel
- Hullside Paint IMRON- Blue
- Swing in Hullside Door w/Foldout Ladder
- Port Side Dual Console for Additional Electronics
- Hi-Lo Portside Actuated Seat for Dual Console
- Helm Seat- Custom Dual Electric Hi-Lo/Fore & Aft w/Reversible Backrest
- Dual Burner Electric Stovetop
- Microwave Oven
- Electric Head with Macerator
- Solid Surface Countertop
- Digital Trim Tabs with Auto Retract
- Bow Thruster
- Windlass with Helm Control, Foot Switches and Stainless Steel Claw Anchor
- Pressurized Fresh Water System
- Aft Electric Sunshade
- Electric Sunroof for Bridge Deck
- Electric Hot Water Heater
- Custom Hardwood Flooring in Cabin
- Transom Freshwater Shower Hot/Cold

- Freshwater Washdown for Anchor Locker
- (4) Mate Series Rod/Cup Holders
- Heavy Duty Bow Rail
- Hullside Windows with Dual Purpose Blinds
- Cockpit IceMaker
- Bridge Deck Air Conditioning Package 24,000 BTU
- Cockpit Deck "L" Setee with Add'l Courtesy Light
- Baitwell in Cockpit Sole with 12v Circulation Pump
- Enclosed Helm Deck
- Recessed Forward Sunpad w/Cup Holders w/Lift Up Backrest
- (2) Multi Color Underwater Lights
- 50amp Cblemaster Shore Power Connection
- Tiling of Shower and Head Sole
- Queen Size Berth with Custom Bedding
- Smart TV in Cabin
- Powder Coated Aluminum Bow Rail and Grab Rails
- Belloca Steering Wheel w/Deluxe Knob
- LED Spreader Light on Aft Top
- (4) Gem Rod Holders in The Bow
- Drain Hose for Each Rod Holder
- Pull Shade for Hardtop Sunroof
- Paddleboard Rack on Hardtop
- (4) Rod Holders on Transom
- Diamond Quilted Upholstry

Performance

HIN#IBW41024E819

Intrepid 410 Evolution

15.5 x 24 Suzuki Duo Prop

3x Suzuki DF350A

Engine Height P5 C2/4 S5

CAV Plate P 2.75" C 5.5" S 2.625"

*Ask For Full Performance Report if Desired

Range Based on Full 450 gal Fuel Tank Usage- Recommend Calculating with 10% Reserve if Going Long Distances Especially Over Open Water

AVERAGE CRUISE SPEEDS

4000 RPM - 34 mph - 38 gph - .89 mpg - Range 400 Miles

4500 RPM - 40 mph - 46.75 gph - .86 mpg - Range 387 Miles

FULL SPEED

WOT RPM - 54 mph - 88.5 gph - .6 mpg

Construction

- 316 Stainless Fasteners Throughout
- Composite Fiberglass Stringer System
- Fully Integrated Hull/Motor Well Bracket
- Hand Laid Hull with Non-woven Multidirectional Reinforcements and Vacuum Bagged Coring
- Hi-Flex Gel-coat
- High Gloss White Urethane Painted Bilges
- Resin Infused Liner and Deck Modules

Mechanical

- (8kw) Compact Diesel Generator
- Aluminum Fuel Tanks with Level Senders
- Bronze Thru-hulls with Seacocks Below Waterline
- Fire Suppression System in Mechanical Room with Automatic Generator Shut Down
- Gas/Water Separator on Generator Exhaust System
- Power Assisted Hydraulic Steering with Tilt Helm
- Waste/Holding Tank Odor Proof Polyethylene with Level Sender and Tornado Flush Fitting
- Water Tank Food Grade Polyethylene

Head/Shower

- Blinds
- Electric Head with Freshwater Supply
- Exhaust Fan
- Faucet Single Lever
- Outlets, AC 1 Double Outlets ELCI Protected
- Shower Stall with Acrylic Door
- Skylights (1) Fixed
- Sole Tile and Fiberglass Finish
- Toilet Paper Holder Behind Locker Door
- Towel Bar

- Vanity Counter Solid Surface with Vessel Sink
- Vanity Mirror

Cockpit/Aft Deck

- Cockpit Hatches Guttered, Gasket, "T" Handle Dogs and Stainless Steel Gas Springs
- Courtesy Lights, 12 Volt, LED Three Step Lights Two Under Gunnel
- Dockside Freshwater Inlet
- Freshwater Washdown Outlet
- Insulated Storage Box Aft
- Integrated Starboard Hullside Access Door with Fold Out Ladder System (Dive Door)
- Scuppers
- Sea Water Washdown Outlet
- Self Bailing Cockpit
- Shore Power Inlet (Stainless Steel)
- Transom Shower with Retractable Hose, Hot/Cold

Galley

- Blinds
- Cabinet, Upper Galley
- Countertop, Solid Surface with Sink
- Drawers Stainless Steel Lined
- Electric Dual Cook Top
- Faucet Single Lever
- Forward Recessed Deck Skylight
- Microwave
- Outlets, AC 2 Double Outlets ELCI Protected
- Refrigerator/Freezer Stainless Steel
- Waste Basket

Exterior

- Anchor Chain Locker, Self-draining/Hidden Cleat
- Anchor Chute with Stainless Steel Chafe Plates and Anchor Roller
- Anodized Aluminum Bow Rail
- Boarding Ladder on Swim Platform
- Bow Eye
- Cleats, Bow, Spring and Stern
- Deck Fills (Diesel, Gas, Water and Waste Pump Out)
- Heavy-Duty White Rub Rail

- Mast, Navigation Lights
- Non-Skid Deck and Gunwales
- Skylight Hatches in Cabin
- Sun Pad with Integrated Cup Holders
- Swim Platforms Port and Starboard
- Windlass 12 Volt, Vertical, Low Profile, Chain/Rode, with Handheld Remote
- Windshield (with Wiper System) for (3) Sided Enclosed Bridge Deck with Opening Side Windows

Electrical

- AC/DC Distribution system, 12 Volt, 120 /240 Volt 60/50 Hz with Digital Meters
- Air-conditioning, Cabin, Reverse Cycle, with Digital Control
- Alarms, High Bilge Water
- Batteries, AGM Glass Mat, with Boxes, Lids and Straps, 3 x GP 31 for Engines, 1 x GP 31 for House
- Battery Charging System
- Battery Switches Emergency Paralleling
- Battery Switches Remote Operated
- Bilge Lights, Center Aft Compartment LED
- Bilge Pumps 4 x 12 Volt Automatic
- Bonding System
- Carbon Monoxide Detector
- Exhaust Fan, Generator Compartment 12 Volt
- Exhaust Fan, Shower Compartment 12 Volt
- Freshwater Pump 12 Volt Pump
- Galvanic Isolator
- Gray Water Pump 12 Volt
- Holding Tank, Direct Overboard Discharge for Toilet with Y Valve
- Indicator Light, Reverse Polarity
- Mechanical Room Lights 12 Volt four PC
- Navigation Lights, 12 Volt - LED
- Raw Water Washdown Pump, 12 Volts
- Shore Power Inlet, Aft, AC, 50 amp 120 / 240 Volt / 60 Hz
- Tank Gauges for Gasoline, Diesel, Water and Waste
- Trim Tabs 12 Volt dual pump BXT Series with Auto Retract
- Water Heater (11 Gallon), 240 Volt
- Windshield Wipers, 12 Volt with Speed Control Auto Park and Washer
- Wiring, Marine-grade Tin-plated Copper

Bridgedeck

- Bridge Deck Infinity Flooring Woven Vinyl
- Compass
- Electronics Console, At Helm
- Electronics Console, Companion Port Side
- Helm Seat Double, Three Way Electronic Control and Adjustable Bolster and Reversible Backrest
- Light, Courtesy (2)
- Lighting, Hardtop, 12 Volt, LED
- Lighting, Red Overhead Night Lighting
- Outlets, 1 x 2 Gang GFCI
- Outlets, 2 x USB at Helm Console
- Settee L shaped (Port Side) with Custom Adjustable Co-pilot Seat Forward
- Settee, L shaped (Starboard)
- Steering Wheel, Stainless Steel
- Sunroof (Electric)
- Push Button LED Backlit Switches

Cabin

- Custom U-Shaped Settee
- Dinette Table Hi-Lo Electric, with Solid Wood Surface with Filler Cushion to Create Additional Berth
- Drawers, Wood Faced with Stainless Steel Drawer Slides
- Hanging Locker with Automatic Light 12 Volt LED
- Hardware, Stainless Steel and Chrome
- Headlining, Soft Panels
- Lighting, Accent, 12 Volt LED
- Lighting, Courtesy, 12 Volt LED
- Lighting, Overhead, 12 Volt, LED with Dimmers
- Lights, Reading at Berths, 12 Volt LED
- Outlets, AC 3 Double Outlets ELCI Protected
- Queen Berth Forward with Custom Deluxe Innerspring Mattress
- Skylight Hatches (2) Opening
- Skylights (2) Fixed
- Sole, Access Hatches
- Sole, Hardwood
- Steps with Hardwood Treads
- Window Shades, Cabin
- Wood Veneered Cabinetry

Исключения

При продаже яхты исключаются личные вещи владельца.

Отказ от ответственности

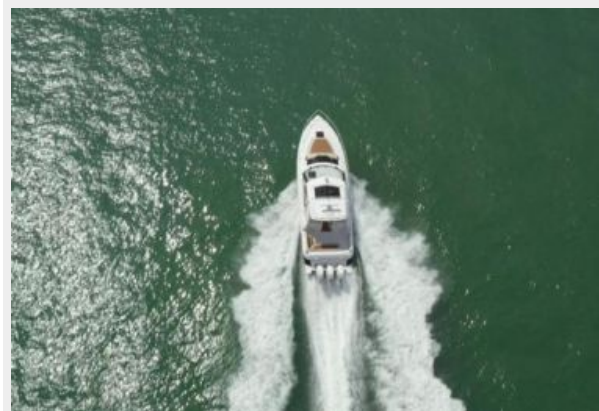
Компания предоставляет описание судна или яхты добросовестно, но не может гарантировать точность этой информации, а также не ручается за техническое состояние. Покупатель должен проинструктировать своих агентов или оценщиков исследовать представленную информацию более подробно, по собственному желанию. Продажа судна или яхты, изменение цены или снятие с продажи будет происходить без предварительного уведомления.

ФОТОГРАФИИ

10-9273339



01-9273340



14-9273364



08-9273376



07-9273362



02-9273345



03-9273353



11-9273371



13-9273381



21-9273350



79-9273352



82-9273380



19-9273317



76-9273312



39-9273308



40-9273304



44-9273325



33-9273302



37-9273294



35-9273300



27-9273297



24-9273329



25-9273328



26-9273331



28-9273326



29-9273320



31-9273319



30-9273327



32-9273316



49-9273315



69-9227884



58-9227986



61-9227894



60-9228005



63-9228003



65-9227826



66-9227825



64-9227840



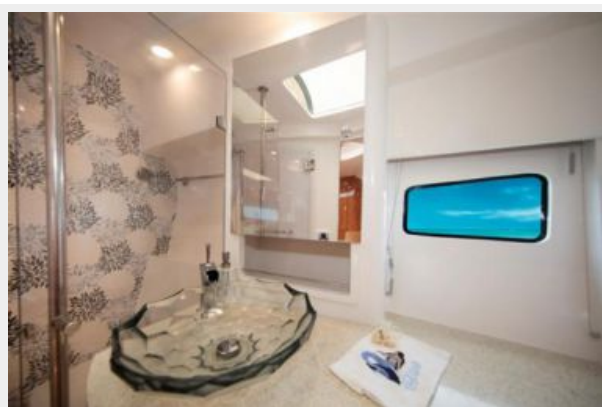
75-9227963



72-9227960



73-9227987



47-9273288



78-9273343



КОНТАКТЫ

Андрей Шестаков (Andrey Shestakov) – ведущий яхтенный брокер отдела продаж яхт и судов компании Shestakov Yacht Sales Inc. Официальный представитель Shestakov Yacht Sales Inc. для русскоговорящих клиентов в центральном офисе компании в Майами/Форт Лодердейл/Флорида/США.

Контактная информация

Email: andrey@shestakovyachtsales.com

Web: shestakovyachtsales.com

Телефоны

Краснодарский край: **+7(918)465-66-44**

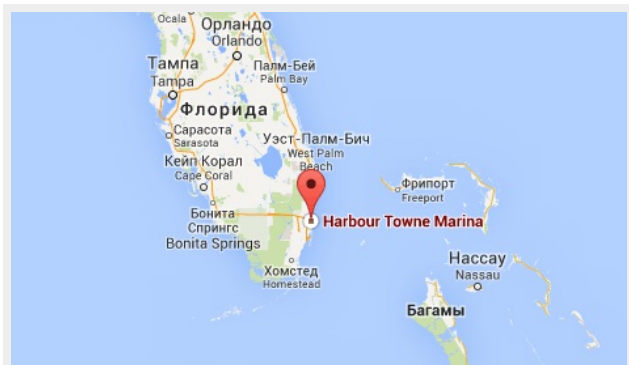
США, Майами, Флорида: **+1(954)274-4435**

Время работы

Понедельник – Суббота: **9:00 - 21:00**
EDT

Воскресенье: **Закрето**

Адрес



Harbour Towne Marina, 850 NE 3rd St,
STE 213, Dania, FL 33004