

## ENCORE — HUNT



**Builder:** HUNT

**Year Built:** 2001

**Model:** Motor Yacht

**Price:** PRICE ON APPLICATION

**Location:** United States

**LOA:** 33' 0" (10.06m)

**Beam:** 11' 3" (3.43m)

**Max Draft:** 3' 0" (0.91m)

**Cruise Speed:** 20 Kts. (23 MPH)

**Max Speed:** 29 Kts. (33 MPH)

Our experienced yacht broker, Andrey Shestakov, will help you choose and buy a yacht that best suits your needs **ENCORE — HUNT** from our catalogue. Presently, at Shestakov Yacht Sales Inc., we have a wide variety of yachts available on our sale's list. We also work in close contact with all the big yacht manufacturers from all over the world.

If you would like to buy a yacht **ENCORE — HUNT** or would like help answering any questions concerning purchasing, selling or chartering a yacht, please call **+1(954)274-4435**

# TABLE OF CONTENTS

TABLE OF CONTENTS	2
SPECIFICATIONS	4
Overview	4
Basic Information	4
Dimensions	4
Speed, Capacities and Weight	4
Accommodations	5
Hull and Deck Information	5
Engine Information	5
DETAILED INFORMATION	6
Walkthrough	6
Mechanical	6
Upgrades	7
Exclusions	7
Exclusions	7
Disclaimer	7
PHOTOS	8
Port Profile	8
Port Profile	8
Pilothouse	8
Pilothouse	8
Pilothouse	8
Pilothouse Seating	8
Pilothouse Seating	9
Pilothouse Seating	9
Engine Access	9
Helm	9
Helm and Interior Access	9

---

Interior	9
Galley	10
V-Berth	10
Seating	10
Seating	10
Seating	10
Interior	10
Head	11
Head	11
Aft Deck Seating	11
Aft Deck	11
Swim Step	11
Bow	11
Bow	12
Port Stern	12
Stern	12
Aerial	12
<b>CONTACTS</b>	<b>13</b>
Contact details	13
Telephones	13
Office hours	13
Address	13

---

# SPECIFICATIONS

---

## Overview

---

ENCORE is ideally suited to the boating couple in search of a high quality Downeast design/build, significant recent upgrades, and all season protection. The only Surfhunter 33 built by Hunt with a factory hardback enclosure she is optimized for economical couples cruising with a large galley and head, comfortable custom bedding, and protection from the elements. Her large cockpit is a wonderful place to entertain when day-boating, and her efficient Cummins diesel engine provides excellent performance and efficiency, coupled with simple maintenance and affordable parts. ENCORE boasts recent Awlgrip topside paint (2017) and a recently sprayed barrier coat and bottom (2020) which show the level of care her current owner has provided her. Discerning buyers will note her wonderful blend of quality and simplicity. The perfect size yacht to provide comfortable accommodation for two, and yet affordable to maintain and transport.

## Basic Information

---

**Category:** Motor Yacht

**Model Year:** 2001

**Year Built:** 2001

**Country:** United States

## Dimensions

---

**LOA:** 33' 0" (10.06m)

**LWL:** 28' 1" (8.56m)

**Beam:** 11' 3" (3.43m)

**Max Draft:** 3' 0" (0.91m)

## Speed, Capacities and Weight

---

**Cruise Speed:** 20 Kts. (23 MPH)

**Cruise Speed Range:** 200

**Max Speed:** 29 Kts. (33 MPH)

**Displacement:** 11000 Pounds

**Water Capacity:** 25 Gallons

**Holding Tank:** 7 Gallons

**Fuel Capacity:** 125 Gallons

---

## Accommodations

---

**Total Berths:** 1

**Sleeps:** 2

**Total Heads:** 1

---

## Hull and Deck Information

---

**Hull Material:** Fiberglass

**Hull Finish:** Plastic

---

## Engine Information

---

**Engines:** 1

**Manufacturer:** Cummins

**Model:** 6BTA

**Engine Type:** Inboard

**Fuel Type:** Diesel

---

# DETAILED INFORMATION

---

## Walkthrough

---

Encore has an elegant presence when viewed from the dock, sloping deck lines, aggressive bow flare, mirror finish paint and varnish, large windows, wide side decks, and a spacious cockpit. A roomy cockpit with an upholstered bench seat is a wonderful place to sit on a sunny day. The center cushion and seat are removable for easy access to the dinghy davits and teak swim platform. Wide side decks make reaching the bow safe and easy. Most notably this particular Surfhunter has a custom, factory ordered, hard-back enclosure and beautiful teak pilothouse door. Unlike any other, this feature provides a substantial upgrade in comfort, security, and noise reduction. The pilothouse area is compact, but comfortable for 4 seated adults underway. Excellent visibility from the helm chair, and access to all of the updated navigation equipment is within easy reach. The Cummins diesel engine is accessed through several floor access panels in the pilothouse, and the day access to fuel filters etc. is easily accessible under the helm seat floorboard. The desirable Cummins 6BTA 5.9l engine is renowned for reliability, efficiency and performance. Encore can cruise at 20kts burning only 10 gph. Descending the 3 steps into the lower living area, you find yourself in the large in-line galley laid out to port. Exceptional thought has been put into the design and construction of this custom option. This large galley replaced what would normally be a small galley and tiny dinette, and offers a large stove/oven, refrigerator, sink, and well designed storage solutions. The large head is to starboard, and forward is a spacious v-berth with a filler cushion, custom fabrics, fitted mattress protectors and sheets, ample storage and a comfortable separate seating area for reading, relaxing, or putting shoes on. Everything you'd need for a couples cruiser with the ability to have more aboard for day-boating. Tastefully appointed, impressively built, and well maintained. Hunt hull designs are centered around their famous Deep V underwater profiles. Highly regarded in performance designed vessels from commercial pilot vessels, US Navy and Coast Guard vessels, and countless recreational designs for other famous brands such as Bertram and Grand Banks. The hull shape provides a comfortable, dry ride, with nimble performance characteristics and excellent stability and fuel efficiency.

## Mechanical

---

- Cummins 6BTA 5.9l Diesel 370hp engine 1100hrs • 1.5" Stainless Steel Shaft • 5 Blade Nibral propeller • Hydraulic steering • Morse throttle controls • Spade rudder • Sidepower Bowthruster • Bennett Trim Tabs w/ indicators • St. Croix Dinghy Davits on transom • Marine Air Systems reverse cycle AC/Heat w/ dedicated 30A circuit • Force-10 3 burner propane stove w/ oven • Norcold 12v refrigerator • Raritan manual head • Hart interface Inverter/Charger • Simrad 12" Chartplotter • Garmin GPSMap 740 Chartplotter • B&G Depthsounder • Simrad 4G Radar • ICOM IC M127 VHF • Robertson AP22 Autopilot • Windlass control at helm and on bow • ACR RCL100 Searchlight • Clarion stereo • 22lb Stainless Steel Delta anchor w/ 1/4" chain connected to 3 strand rode • Electric 12v Simpson windlass on bow

---

## Upgrades

---

• New Simrad 12" touch screen chartplotter and 4G radar (2015)• New (3) 4D AGM Batteries (2015)• New Raritan head (2015)• Refurbished Nibrall propeller and balanced to ISO Class I (2017)• Full engine service including new injectors and new engine pre-heat system (2017)• Rebuilt/Reconfiguration of Ducting for AC/Heat (2017)• Refinished all interior and exterior teak and varnish (2017)• Installed dedicated battery charger for bow thruster/windlass circuit (2017)• All exterior varnish recoated (May 2020)• Bottom paint removed to barrier coat and repainted (June 2020)

---

## Exclusions

---

All personal property is excluded unless specifically identified and included in the sale agreement and listing specifications. Personal property refers to all items not permanently attached to the vessel including but not limited to artwork, furnishings, and recreational or entertainment items. Advertisements, marketing materials, and/or other photography may depict the vessel with personal property, however, such personal property is excluded unless otherwise specifically included as provided herein.

---

## Exclusions

---

Owner's personal belongings.

---

## Disclaimer

---

The Company offers the details of this vessel or yacht in good faith but cannot guarantee or warrant the accuracy of this information nor warrant the condition of the vessel. A buyer should instruct his representatives, agents, or his surveyors, to investigate such details as the buyer desires validated. This vessel or yacht is offered subject to prior sale, price change, or withdrawal without notice.

# PHOTOS

**Port Profile**



**Port Profile**



**Pilothouse**



**Pilothouse**



**Pilothouse**



**Pilothouse Seating**





**Pilothouse Seating**



**Pilothouse Seating**



**Engine Access**



**Helm**



**Helm and Interior Access**



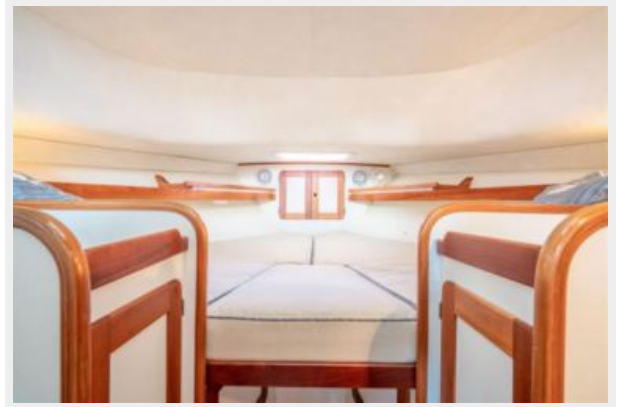
**Interior**



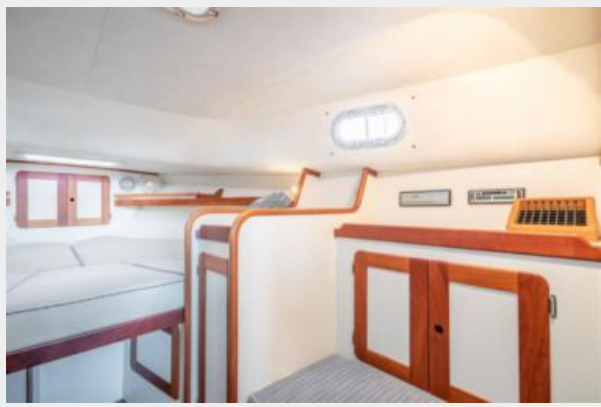
**Galley**



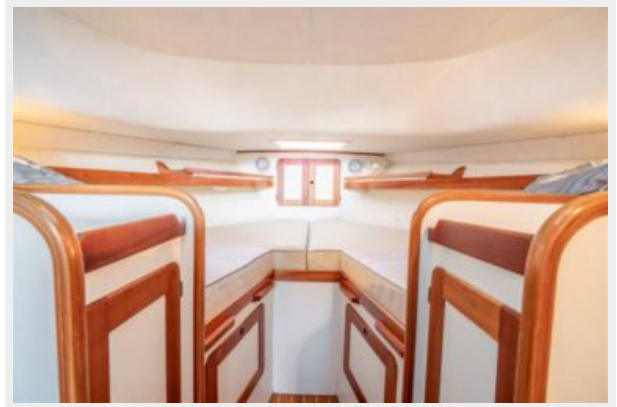
**V-Berth**



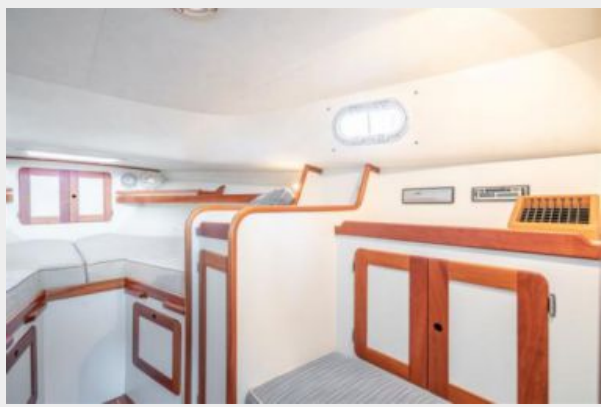
**Seating**



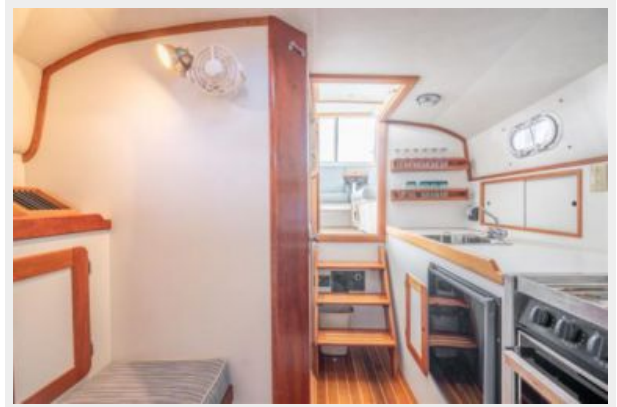
**Seating**



**Seating**



**Interior**



**Head**



**Head**



**Aft Deck Seating**



**Aft Deck**



**Swim Step**



**Bow**



**Bow**



**Port Stern**



**Stern**



**Aerial**



# CONTACTS

---

Andrey Shestakov, leading yacht broker of the sales department of Shestakov Yacht Sales Inc. Shestakov Yacht Sales Inc., the official representative of the Miami/Fort Lauderdale FL headquarters.

## Contact details

---

Email: [andrey@shestakovyachtsales.com](mailto:andrey@shestakovyachtsales.com)

Web: [shestakovyachtsales.com/en/](http://shestakovyachtsales.com/en/)

## Telephones

---

USA: +1(954)274-4435

## Office hours

---

Monday – Saturday: **9:00 - 21:00** EDT

Sunday: **closed**

## Address

---



Harbour Towne Marina, 850 NE 3rd St,  
STE 213, Dania, FL 33004