

PLAYBOOK — OCEAN ALEXANDER



Судостроитель: OCEAN ALEXANDER

Год постройки: 2018

Модель: Моторная яхта

Цена: **ЦЕНА ЯХТЫ ПО ЗАПРОСУ**

Местонахождение: United States

Длина общая: 70' 0" (21.34m)

Ширина: 18' 2" (5.54m)

Мин. осадка: 4' 10" (1.47m)

Макс. осадка: 5' 0" (1.52m)

Крейс. скорость: 24 Kts. (28 MPH)

Макс. скорость: 28 Kts. (32 MPH)

Купить **Playbook — OCEAN ALEXANDER** а также выбрать подходящую вам яхту из нашего каталога яхт вам поможет опытный яхтенный брокер Андрей Шестаков. На сегодняшний день компания **Shestakov Yacht Sales Inc.** имеет большое количество яхт в собственном списке продаж, а также тесно сотрудничает со всеми крупными яхтенными производителями по всему миру.

Для того чтобы купить яхту **Playbook — OCEAN ALEXANDER** а также проконсультироваться по любому вопросу связанному с покупкой, продажей, чартером яхт позвоните по телефону **+7(918)465-66-44**.

ОГЛАВЛЕНИЕ

ОГЛАВЛЕНИЕ	2
ХАРАКТЕРИСТИКИ	4
Обзор	4
Основная информация	4
Размеры	4
Скорость, вместимость и масса	4
Размещение	4
Корпус и палуба	4
Информация о двигателе	5
ПОДРОБНОЕ ОПИСАНИЕ	6
Description	6
Overview	6
EXTERIOR	7
Lower Helm	9
MASTER CABIN	10
Master Head	10
VIP CABIN	10
VIP Head	10
STARB. GUEST CABIN	11
STARB. GUEST HEAD	11
PORT GUEST CABIN	11
FLY BRIDGE AND HELM	12
Upper Helm	12
Crew Quarters	13
Engine Room	13
Исключения	13
Отказ от ответственности	14
ФОТОГРАФИИ	15

57	24
58	25
59	25
60	25
61	25
63	25
62	25
КОНТАКТЫ	26
Контактная информация	26
Телефоны	26
Время работы	26
Адрес	26

ХАРАКТЕРИСТИКИ

Обзор

Основная информация

Тип судна: Моторная яхта

Модельный год: 2018

Год постройки: 2018

Страна: United States

Размеры

Длина общая: 70' 0" (21.34m)

Ширина: 18' 2" (5.54m)

Мин. осадка: 4' 10" (1.47m)

Макс. осадка: 5' 0" (1.52m)

Скорость, вместимость и масса

Крейс. скорость: 24 Kts. (28 MPH)

Макс. скорость: 28 Kts. (32 MPH)

Водоизмещение: 91000 Pounds

Чистый вес: 78000 Pounds

Вместимость воды: 300 Gallons

Вместимость сточного бака: 100 Gallons

Объем топливного бака: 1040 Gallons

Размещение

Всего кают: 4

Всего коек: 6

Всего ком. состава: 3

Корпус и палуба

Материал корпуса: Fiberglass

Информация о двигателе

Двигатели: 2

Производитель: Volvo

Модель: IPS1200

Тип двигателя: Inboard

Тип топлива: Diesel

ПОДРОБНОЕ ОПИСАНИЕ

Description

This super clean 2018 Ocean Alexander 70e is fully loaded with options and upgrades and has low hours. She is a must see if you are in the market for a 70-80' four stateroom motor yacht designed as an owner operator yacht.

Highlighted Features:

Four Staterooms, Three heads, Plus Captains Cabin

Twin Volvo IPS1200 w/DPS

Twin 23kw Kohler Generators

Premium Garmin Electronics Pkg on upper and lower helm stations

Hydraulic Swim/Tender Platform

Teak Cockpit and Swim platform

2019 Walker Bay RIB Tender w/50hp E-Tec outboard

Watermaker

Spot Zero water filter system

Zero Speed FIN Stabilization

Three Joystick docking stations with Dynamic Positioning System

Bridge 3/4 enclosure

Bridge outdoor kitchen w/ grill

Overview

- Twin Volvo IPS 1200 at 950HP Each with low Hours
- Extended Volvo Warranty Until 9/2023
- Twin Kohler 23kw Generators with low hours
- Hydraulic Zero Speed Stabilizer Package
- KVH Trac-Vision HD7 w/ DirecTV Receivers
- Volvo IPS Dynamic Positioning w/ Joystick (3 Docking Stations)
- Electric Bow Thruster w/ Variable Speed
- Inverter Package

- Teak Deck
- Sea Recovery 450 GPD Water-maker
- UV Clear Coat Tint on All Windows
- New Custom Exterior Cushions
- New High Gloss Tables Throughout (Aft Deck, Bow, and Flybridge)
- Teak Hydraulic Swim Platform - 1500lbs
- (7) Underwater Lights
- Bow Manual Awning w/ SS Poles
- Custom Exterior Canvas and Mesh Coverings
- 200' Ultra Anchor and Chain
- ACR Searchlight and Rear Flood Lights
- Custom Aft Deck Fiberglass Cabinetry and Sink
- Refrigerator/Ice Maker on Aft Deck
- 32" Flip Down TV w/ DVD and Satellite Receiver on Aft Deck
- SS Transom Boarding Gates
- Wood Flooring in Salon
- Apple TV in Salon and All Staterooms
- 50" LED TV w/ DVD, Satellite Receiver, and AMP System in Salon
- Added Custom 29" TV in Galley Seating Area
- 24" Jenn-Air Wine Cooler in Galley
- Full Beam Master Stateroom
- Flush mounted 40" TV in Master Stateroom
- Bilge Access Added in Master Stateroom
- Heated Floor in Master Head
- Custom Cambria Flooring in All Heads
- 24,000 BTU Air Conditioning on Flybridge
- Granite Counters on Flybridge
- 32" Flip Down TV on Flybridge w/ Satellite Receiver
- Custom Storage Cabinet on Flybridge w/ Electric Grill
- Manual Awning on Flybridge
- Rear Seating w/ Hi-Lo Table to Convert to Sun-pad on Flybridge
- Octoplex w/ Genset Start
- (4) 24" Garmin Monitors
- On Boat Intranet w/ 4G SIM-WIFI Router
- 6 Zone Sonos System Throughout
- Seagull Water Purifier
- Fresh Air and Bilge Package
- Gulfcoast Fuel Polishing System
- Added Spare Parts Kit
- Upgraded Crew Quarters w/ Bunk

EXTERIOR

- Teak Deck: **UPGRADE**
- New Custom Cushions: **UPGRADE**
- UV Clear Coat Tint on Windows: **UPGRADE**
- New High Gloss Bow Table: **UPGRADE**
- Teak Hydraulic Swim Platform - 1500 lbs: **UPGRADE**
- Underwater Lights: **UPGRADE**
- Bow Manual Awning w/ SS Poles: **UPGRADE**
- Custom Canvas and Mesh Coverings: **UPGRADE**
- 200' Ultra Anchor and Chain: **UPGRADE**
- ACR Searchlight and Rear Flood Lights: **UPGRADE**
- Hardtop
- Fresh Water Wash Down (Bow and Stern)
- Rub Rail w/ S/S Insert
- Backlit Ocean Alexander Logo
- Bronze Through-Hull Fittings
- Removable Swimming Ladder
- Bow Storage Area
- Engine Room and Crew Quarters Access on Transom
- Electric Windlass

AFT DECK AREA

- New High Gloss Table: **UPGRADE**
- Volvo IPS Dynamic Positioning Docking Station: **UPGRADE**
- Teak Deck: **UPGRADE**
- Custom Fiberglass Cabinetry and Sink: **UPGRADE**
- Refrigerator/Ice Maker: **UPGRADE**
- 32" Flip Down TV w/ DVD and Satellite Receiver: **UPGRADE**
- SS Transom Boarding Gates (Port and Starboard): **UPGRADE**
- Garmin Marine Camera
- Stairs to Flybridge
- Flip Open Hatch to Flybridge
- Automatic Sliding Glass Door to Main Cabin

SALON

- Wood Flooring: **UPGRADE**
- 50" LED TV w/ DVD, Satellite Receiver, and AMP System: **UPGRADE**
- Sofa w/ Hidden Drawers for Storage
- Ottoman w/ Storage
- Wood Paneling and Cabinetry
- Removable Ceiling Panels
- Enlarged Hull Side Windows
- Step to Galley Area

GALLEY

- Wood Flooring: **UPGRADE**
- Added Custom 29" TV in Seating Area: **UPGRADE**
- Cooler: **UPGRADE**
- Sonos Audio System for Streaming: **UPGRADE**
- 24" Jenn-Air Wine Cooler: **UPGRADE**
- Wood Panels and Cabinetry
- Storage Cabinets
- Franke Sink and Pull-Out Faucet
- Stairway to Access Door w/ Entry to Flybridge
- Stainless Steel Fisher Paykel Double Door Refrigerator
- Stainless Steel 30" Jenn-Air Microwave
- Stainless Steel Jenn-Air Electric Stove
- Stainless Steel Whirlpool Garbage Disposal
- Stainless Steel Jenn-Air Electric Convection Oven
- Stainless Steel Bosch Dishwasher
- Stainless Steel 15" Jenn-Air Trash Compactor
- Dinette Table w/ L-Shaped Seating and (2) Stools

LOWER HALLWAY

- European Washer/Dryer
- Storage
- Steps to all Staterooms

Lower Helm

- (2) 24" Garmin Monitors: **UPGRADE**
- (1) Black Leather Mechanical Stidd Helm Chair w/ Auto Pilot & Joystick Controls Built into the Arm Rests
- Garmin VHF 200
- Garmin GRID Remote
- Ritchie 5" Compass
- Maxwell AA560 Windlass Controls
- Volvo Engine Controls
- Kohler Controls
- Garmin 12KW Open Array
- Garmin Autopilot GHP Reactor
- Card Reader
- Bow thruster control
- Garmin AIS w/ NMEA GPS
- Garmin Sonar Module w/ Transducer
- Stainless Steel Steering Wheel

MASTER CABIN

- Full Beam Master Stateroom
- 32" LED TV
- Marine King Berth
- Upholstered Head Board
- Carpet Flooring
- (2) Nightstands
- Port and starboard full length dressers with stone tops
- Safe
- Enlarged Hull Side Windows
- Cedar-Lined Walk In Closet
- Private Head Access

Master Head

- Heated Floor: **UPGRADE**
- Custom Cambria Flooring: **UPGRADE**
- Private Access from Master Stateroom
- (2) Sinks
- Full Vanity w/ Mirror
- Wood Cabinet Storage
- LED Lighting
- Walk-In Shower w/ Glass Door
- Planus Head System

VIP CABIN

- Apple TV: **UPGRADE**
- 28" LED TV w/ Satellite Receiver: **UPGRADE**
- Queen Size Berth
- Hanging Cedar Lined Closet
- Hatch Access
- Storage Under Berth and on Sides
- Carpet Flooring
- Private Access to VIP/Bow Head

VIP Head

- Custom Cambria Flooring: **UPGRADE**

- Custom Cambria Flooring: **UPGRADE**
- Private Access from VIP/Bow Stateroom
- Sink
- Full Vanity w/ Mirror
- Wood Cabinet Storage
- LED Lighting
- Shower w/ Glass Enclosure
- Planus Head System

STARBOARD GUEST CABIN

- Twin side by side berths
- Apple TV: **UPGRADE**
- 28" LED TV w/ Satellite Receiver: **UPGRADE**
- Storage Drawers
- Cedar Lined Hanging Locker
- Hull Side Window
- Carpet Flooring
- Private Access to Starboard Guest Head

STARBOARD GUEST HEAD

- Custom Cambria Flooring: **UPGRADE**
- Private Access from Starboard Stateroom
- Sink
- Full Vanity w/ Mirror
- Wood Cabinet Storage
- LED Lighting
- Shower w/ Glass Enclosure
- Planus Head System

PORT GUEST CABIN

- 19" LED TV w/ Satellite Receiver: **UPGRADE**
- Storage Drawers
- Twin Bunk Berths
- Cedar Lined Hanging Locker
- Hull Side Window
- Shelves Beside Berths
- Carpet Flooring

FLY BRIDGE AND HELM

- 24,000 BTU Air Conditioning: **UPGRADE**
- (2) New High Gloss Tables: **UPGRADE**
- Teak Deck: **UPGRADE**
- All New Granite Counters: **UPGRADE**
- 32a" Flip Down TV w/ Satellite Receiver: **UPGRADE**
- Custom Storage Cabinet w/ Electric Grill: **UPGRADE**
- Manual Awning: **UPGRADE**
- Sonos Audio System for Streaming: **UPGRADE**
- Rear Seating w/ Hi-Lo Table to Convert to Sun-pad: **UPGRADE**
- Full Wet Bar
- Upper Helm Area w/ (2) Chairs
- Port Storage w/ Refrigerator and Ice Maker
- (2) Bar Stools
- L-Shaped Seating Area w/ Cushions (Forward)
- U-Shaped Seating Area w/ Cushions to Aft
- (2) Stairways to Enter Main Cabin Area or Aft Deck
- Storage Space

Upper Helm

- (2) 24" Garmin Monitors: **UPGRADE**
- (2) Mechanical Stidd Helm Chairs
- Garmin VHF 200
- Garmin GRID Remote
- Ritchie 5" Compass
- Maxwell AA560 Windlass Controls
- Volvo Engine Controls
- Kohler Controls
- Garmin 12KW Open Array
- Garmin Autopilot GHP Reactor
- Card Reader
- Garmin AIS w/ NMEA GPS
- Garmin Sonar Module w/ Transducer
- Stainless Steel Steering Wheel

- Hydraulic Zero Speed Stabilizer Package w/ Controls: **UPGRADE**
- KVH TracVision HD7 w/ DirecTV Receivers: **UPGRADE**
- Volvo IPS Dynamic Positioning w/ Joystick: **UPGRADE**
- Electric Bow Thruster control
- Pantograph Windshield Wipers
- Trim Assist Engine Controls

- Air Horn

Crew Quarters

- Upgraded Crew Quarters w/ Bunk: **UPGRADE**
- Access From Transom
- Cabinet Storage Area
- Head w/ Toilet and Shower

Engine Room

- Twin Volvo IPS 1200 at 900HP Each with Low Hours
- Twin Kohler 23kw Generators w/ Low hours
- Hydraulic Zero Speed Stabilizer Package: **UPGRADE**
- KVH TracVision HD7 w/ DirecTV Receivers: **UPGRADE**
- Volvo IPS Dynamic Positioning w/ Joystick (3 Docking Stations): **UPGRADE**
- Electric Bow Thruster w/ Variable Speed: **UPGRADE**
- Inverter Package: **UPGRADE**
- Sea Recovery 450 GPD Watermaker: **UPGRADE**
- Spot Zero Water Purifier System: **UPGRADE**
- (2) Garmin Marine Cameras
- Dometic Air Conditioning System Throughout
- Stainless Steel Rails on Sides of Engines
- Fire Extinguisher System
- Delta-T Fans
- Exhaust Fans
- 24V Shower Sump Pumps
- Lighted Engine Compartment
- 28 Gal. Water Heater
- Automatic Bilge Pump
- Lighted Bilge
- Common Drainage System
- Aluminum Fuel Tank w/ Gauges
- Filler for Fuel Tank on Sides
- AC/DC System
- AC/DC Distribution Panels
- AGM Batteries w/ Paralleling System and Switches
- Bonding System
- Shore Power Receptacle Cable Master

Исключения

При продаже яхты исключаются личные вещи владельца.

Отказ от ответственности

Компания предоставляет описание судна или яхты добросовестно, но не может гарантировать точность этой информации, а также не ручается за техническое состояние. Покупатель должен проинструктировать своих агентов или оценщиков исследовать представленную информацию более подробно, по собственному желанию. Продажа судна или яхты, изменение цены или снятие с продажи будет происходить без предварительного уведомления.

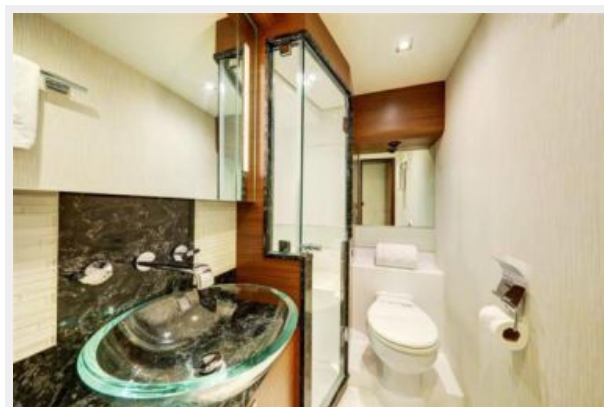
ФОТОГРАФИИ













Bunk Cabin



VIP Stateroom



VIP Head



Flybridge



Flybridge



Flybridge

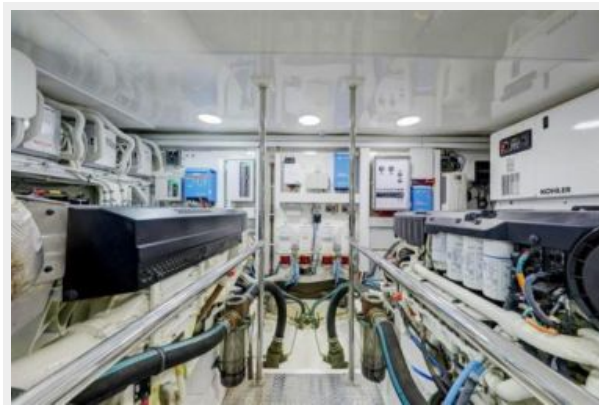


Flybridge



Flybridge







Crew Area



Crew Area



Crew Area

57



Engine Room



Engine Room

58



59



60



61



62



63



КОНТАКТЫ

Андрей Шестаков (Andrey Shestakov) – ведущий яхтенный брокер отдела продаж яхт и судов компании Shestakov Yacht Sales Inc. Официальный представитель Shestakov Yacht Sales Inc. для русскоговорящих клиентов в центральном офисе компании в Майами/Форт Лодердейл/Флорида/США.

Контактная информация

Email: andrey@shestakovyachtsales.com

Web: shestakovyachtsales.com

Телефоны

Краснодарский край: **+7(918)465-66-44**

США, Майами, Флорида: **+1(954)274-4435**

Время работы

Понедельник – Суббота: **9:00 - 21:00**
EDT

Воскресенье: **Закрето**

Адрес



Harbour Towne Marina, 850 NE 3rd St,
STE 213, Dania, FL 33004