

FIVE WAVES — AB YACHTS



Builder: AB YACHTS

Year Built: 2010

Model: Motor Yacht

Price: PRICE ON APPLICATION

Location: United States

LOA: 118' 2" (36.00m)

Beam: 24' 8" (7.50m)

Max Draft: 5' 3" (1.60m)

Cruise Speed: 33 Kts. (38 MPH)

Max Speed: 40 Kts. (46 MPH)

Our experienced yacht broker, Andrey Shestakov, will help you choose and buy a yacht that best suits your needs **FIVE WAVES — AB YACHTS** from our catalogue. Presently, at Shestakov Yacht Sales Inc., we have a wide variety of yachts available on our sale's list. We also work in close contact with all the big yacht manufacturers from all over the world.

If you would like to buy a yacht **FIVE WAVES — AB YACHTS** or would like help answering any questions concerning purchasing, selling or chartering a yacht, please call **+1(954)274-4435**

TABLE OF CONTENTS

TABLE OF CONTENTS	2
SPECIFICATIONS	3
Basic Information	3
Dimensions	3
Speed, Capacities and Weight	3
Accommodations	3
Hull and Deck Information	3
Engine Information	4
DETAILED INFORMATION	5
DETAILED DESCRIPTION	5
Exclusions	7
Disclaimer	7
PHOTOS	8
five-waves-ga	13
CONTACTS	14
Contact details	14
Telephones	14
Office hours	14
Address	14

SPECIFICATIONS

Basic Information

Category: Motor Yacht

Model Year: 2010

Year Built: 2010

Refit Year: 2017

Country: United States

Dimensions

LOA: 118' 2" (36.00m)

Beam: 24' 8" (7.50m)

Max Draft: 5' 3" (1.60m)

Speed, Capacities and Weight

Cruise Speed: 33 Kts. (38 MPH)

Cruise Speed Range: 700

Max Speed: 40 Kts. (46 MPH)

Displacement: 250000 Pounds

Gross Tonnage: 218 Pounds

Water Capacity: 845.3505664 Gallons

Fuel Capacity: 4226.752832 Gallons

Accommodations

Total Cabins: 5

Sleeps: 11

Crew Sleeps: 6

Hull and Deck Information

Hull Material: GRP

Exterior Designer: Marco Arnaboldi

Interior Designer: Guido de Groot Design

Engine Information

Engines: 3

Manufacturer: MTU

Model: 16V 2000 M93

DETAILED INFORMATION

DETAILED DESCRIPTION

```
#edmiston-espec { font-family: 'Helvetica Neue LT Std', 'Sans'; font-weight: 200; font-style:
normal; text-align: justify; text-justify: inter-word; line-height: 1.5em; color: #444; } #edmiston-
espec table { border-spacing: 0px; border-collapse: collapse; } #edmiston-espec td { text-align:
left; vertical-align: top; padding: 0px; margin: 0px; line-height: 1.5em; } #edmiston-espec th { text-
align: left; vertical-align: top; padding: 0px; margin: 0px; width: 5cm; } #edmiston-espec h1 { font-
family: 'Times New Roman','Serif'; color: #DB001E; } #edmiston-espec h2 { font-family: 'Times
New Roman','Serif'; color: #DB001E; } #edmiston-espec h3 { font-family: 'Times New
Roman','Serif'; color: #222; } #edmiston-espec ul { list-style: none; margin: 0; padding: 0 0 0 20px;
} #edmiston-espec li.bullet { list-style: disc; }
```

1. MAIN CHARACTERISTICS

TYPE	◦ Planing Motor Yacht
HULL NO	◦ 165
BUILDER	◦ AB Yachts
NAVAL ARCHITECT	◦ Marco Arnaboldi
EXTERIOR DESIGN	◦ Marco Arnaboldi
INTERIOR DESIGN	◦ Guido de Groot Design
YEAR	◦ 2010
REFIT	◦ 2017
MMSI	◦ 538070966
CLASSIFICATION	◦ RINA
CONSTRUCTION	◦ GRP Hull & Superstructure
CREW	◦ 6
FLAG	◦ Marshall Islands
ENGINES	◦ 3 x 2,400Hp MTU 16V 2000 M93
GT	◦ 218
DISPLACEMENT	◦ 125 tons

2. DIMENSIONS

LOA	◦ 36.00m / 118'1"
BEAM	◦ 7.50m / 24'7"
DRAFT	◦ 1.60m / 5'3"

3. SPEED & RANGE UNDER POWER

MAXIMUM SPEED	◦ 40 knots
CRUISING SPEED	◦ 33 knots
FUEL CONSUMPTION	◦ 1,200 litres / hour

- RANGE**
 - 700nm
- 4. CAPACITIES**
 - ACCOMMODATION**
 - 10+1 x Guests in 5 cabins (1 x Master, 1 x VIP, 3 x Twins – 2 of which convertible, 1 x Pullman)
 - CREW**
 - 6 x Crew
 - FUEL**
 - 16,000 litres / 4,227 US gallons
 - FRESH WATER**
 - 3,200 litres / 845 US gallons
- 5. MECHANICAL EQUIPMENT**
 - ENGINES**
 - 3 x 2,400Hp MTU 16V 2000 M93
 - PROPULSION**
 - Waterjet MJP 550 DD
 - GENERATORS**
 - 2 x 50kW Kohler
 - AIR CONDITIONING**
 - Throughout
- 6. TENDERS & WATERSPORTS EQUIPMENT**
 - TENDERS**
 - 1 x 5.40m / 18' Nuvorania Diesel
 - 2 x Yamaha Wave Runners
 - 2 x Sea bobs
 - WATERSPORTS**
 - 1 x Lifffoil
 - 2 x Paddle boards
 - Wake Boards
 - Inflatable Unicorn
- 7. REFIT NOTES**
 - **2017:**
 - New paint
 - New teak
 - 2 x New main engines
 - New generators
 - Air conditioning replaced
- 8. COMMENTS**

FIVE WAVES was built by AB Yachts in 2010. A sophisticated exterior design is the work of Marco Arnaboldi with her luxurious interior is designed by Guido de Groot Design.

FIVE WAVES can accommodate up to 10 guests in 5 spacious cabins, including a master suite, 1 VIP cabin, 3 twin cabins (2 are convertible) and 1 Pullman bed. Five Waves runs with a professional crew of 6 to ensure a relaxed luxury yacht experience. Timeless styling, beautiful furnishings and sumptuous seating feature throughout to create an elegant and comfortable atmosphere.

With her shallow draft FIVE WAVES is the ideal yacht for cruising the shallow waters of the

Bahamas.

○ **KEY FEATURES**

- Modern exterior and interior design
- Comfortable accommodation for 10 guests including a full beam master cabin
- Superior performance with speeds up to 40 knots
- Shallow draft, suitable for usage in the Bahamas
- Charter compliant

Exclusions

Owner's personal belongings.

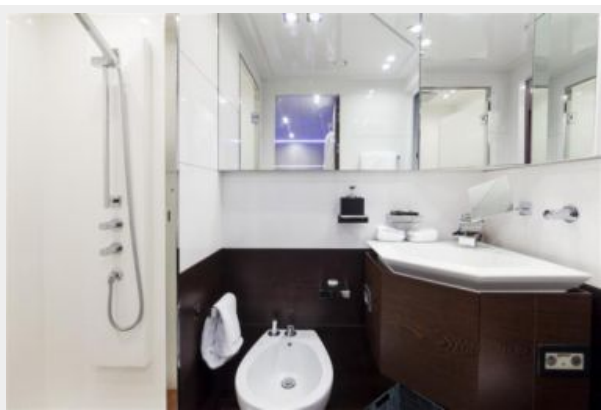
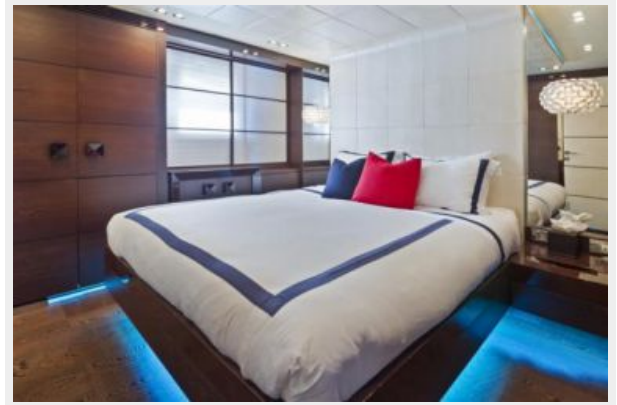
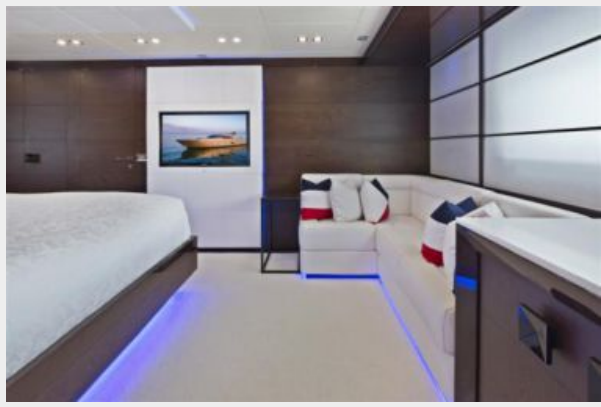
Disclaimer

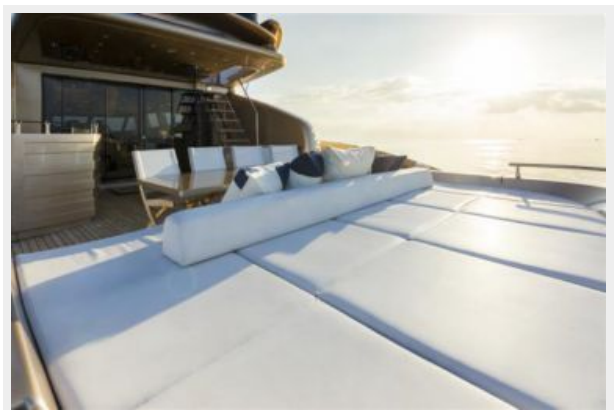
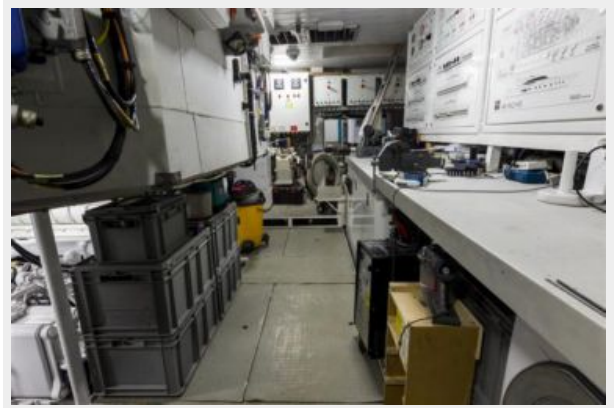
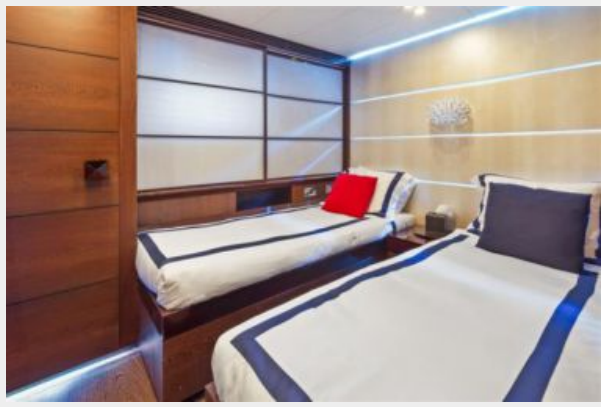
The Company offers the details of this vessel or yacht in good faith but cannot guarantee or warrant the accuracy of this information nor warrant the condition of the vessel. A buyer should instruct his representatives, agents, or his surveyors, to investigate such details as the buyer desires validated. This vessel or yacht is offered subject to prior sale, price change, or withdrawal without notice.

PHOTOS



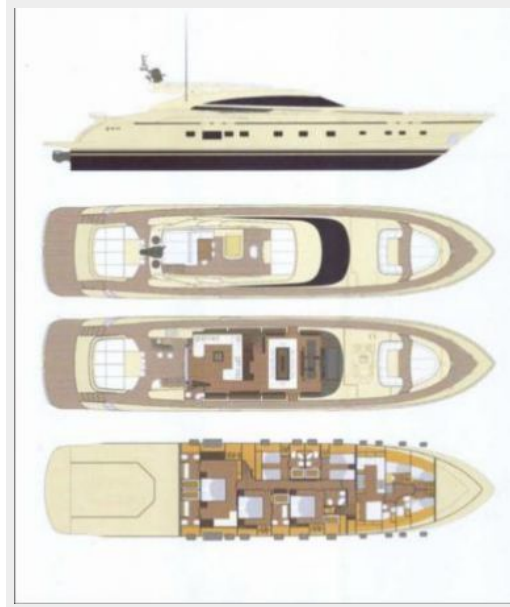








five-waves-ga



CONTACTS

Andrey Shestakov, leading yacht broker of the sales department of Shestakov Yacht Sales Inc. Shestakov Yacht Sales Inc., the official representative of the Miami/Fort Lauderdale FL headquarters.

Contact details

Email: andrey@shestakovyachtsales.com

Web: shestakovyachtsales.com/en/

Telephones

USA: +1(954)274-4435

Office hours

Monday – Saturday: **9:00 - 21:00** EDT

Sunday: **closed**

Address



Harbour Towne Marina, 850 NE 3rd St,
STE 213, Dania, FL 33004