

LEELI — UNIESSE



Builder: UNIESSE

Year Built: 2012

Model: Sport Yacht

Price: PRICE ON APPLICATION

Location: United States

LOA: 55' 0" (16.76m)

Beam: 15' 5" (4.70m)

Min Draft: 4' 9" (1.45m)

Our experienced yacht broker, Andrey Shestakov, will help you choose and buy a yacht that best suits your needs **LEELI — UNIESSE** from our catalogue. Presently, at Shestakov Yacht Sales Inc., we have a wide variety of yachts available on our sale's list. We also work in close contact with all the big yacht manufacturers from all over the world.

If you would like to buy a yacht **LEELI — UNIESSE** or would like help answering any questions concerning purchasing, selling or chartering a yacht, please call **+1(954)274-4435**

TABLE OF CONTENTS

TABLE OF CONTENTS	2
SPECIFICATIONS	4
Basic Information	4
Dimensions	4
Speed, Capacities and Weight	4
Accommodations	4
Hull and Deck Information	4
Engine Information	4
DETAILED INFORMATION	5
Description	5
Exclusions	8
Disclaimer	8
PHOTOS	10
DLP06629-HDR	10
DLP06407	10
DLP06410	10
DLP06413	10
DLP06425	10
DLP06440	10
DLP06443	11
DLP06455 (1)	11
DLP06455	11
DLP06461	11
DLP06470	11
DLP06473	11
DLP06494	12
DLP06503	12
DLP06518	12

DLP06581-HDR	12
DLP06533	13
DLP06539	13
DLP06557	13
DLP06602-HDR	13
DLP06629-HDR	13
CONTACTS	14
Contact details	14
Telephones	14
Office hours	14
Address	14

SPECIFICATIONS

Basic Information

Category: Sport Yacht

Model Year: 2012

Year Built: 2012

Country: United States

Registration #: 1250012

Coast Guard #: 1250012

Dimensions

LOA: 55' 0" (16.76m)

Beam: 15' 5" (4.70m)

Min Draft: 4' 9" (1.45m)

Speed, Capacities and Weight

Water Capacity: 92 Gallons

Fuel Capacity: 666 Gallons

Accommodations

Total Cabins: 3

Hull and Deck Information

Hull Material: Fiberglass

Hull Configuration: Modified V-Hull

Engine Information

Engines: 2

Manufacturer: MAN

Model: D2876LE423

Engine Type: Inboard

Fuel Type: Diesel

DETAILED INFORMATION

Description

The 55' Uniesse Sport is a 3 stateroom layout, 2 headcruiser. It will get you to the Bahamas with effortless ease being pushed by two 800hp MAN engines with Arneson surfacedrives. You will be going in style while cruising at 30 knots

Salon

- Starboard side L-shaped leather couch with storage
- High/low coffee table that turns into a dining table
- Shag carpet
- Blinds for port/starboard windows
- LG flat screen TV
- Raritan ice maker
- Port side cabinet with built-in storage
- Under water light controls
- BOSE sound system
- Sliding door that opens to salon

Galley

- Stainless Steel sink
- Kenyon 4 burner cook top
- GE convection microwave
- Storage above cook top & below sink
- Fridge/Freezer with built in covers
- 4 drawers

Master Stateroom

- Queen bed w/ under bed storage
- Port side chest of drawers
- Port & Starboard windows w/ blinds
- His & Her reading lamps
- Large hanging lockers (2)
- LG flat screen TV
- Built in drawers on each side of bed
- LED lighting

Master Head

- Planus head
- Bidet
- Shower with bench & teak floor
- Linen closet
- Under sink storage
- Cabinet storage
- Large mirror

VIP Stateroom

- Double bed
- LG flat screen TV
- Hanging locker
- Starboard side built in drawers
- Large windows
- LED lights
- His & Her reading lights

Guest Stateroom

- Twin bunks (2)
- Reading lights
- Hanging locker
- Starboard bunk drawers
- Night stand drawer
- LED lights
- LG flat screen TV
- Large window

Guest Head

- Planus head
- Sink
- Shower w/ teak floor
- Large mirror
- Towel racks
- Linen closet

Crew Portside

- Single bunk
- Campo head, shower & sink
- Hanging locker
- Porthole
- Storage
- A/C

- Ladder

Helm & Flybridge

- Raymarine E-120 Auto Depth Sounder
- Lofran's Deep Gauges
- 3 x Bioning AHD 880 TC Screen's for MAN controls
- Side power bow thruster
- ITT Jabsco Search Light
- Raymarine VHF 240
- Quick Shift controls
- Trim gauge
- Side by side helm seat
- Port and starboard side power windows
- Power sunroof
- LED lighting
- Breaker panel under helm

Aft Deck

- Teak deck
- Princess grill
- FCI water maker, control under port side cabinet / storage
- High Low table
- JL audio speakers
- Two Clarion stereo controls
- Sink
- Starboard side fuel stops
- Fire extinguisher
- Passarell control starboard side
- LED lighting
- Davit Opacmhre
- 50 Amp power (2)
- One Glendening / Cablemaster
- Manual hand pump for bilge
- Hot & Cold shower washdown
- Storage space
- Large aft deck teak sun deck
- Brand new swim ladder
- Starboard side 1000w 24V windlass
- LED color light on aft deck

Bow

- Stainless Steel bow rail runs all the way to aft deck

- Sun pad
- Water fill
- Anchor locker
- Remote for windlass
- Line & fender storage
- Stainless Steel cleats
- Window covers front & sides

Hard Top

- LED running lights
- Raymarine X2
- Spotlight
- Raymarine radar
- Stainless Steel air horns

Engine Room

- FCI water maker (663.3 hrs)
- Cummins Onan 13.5 generator 1500 hours
- Fresh water wash down
- Surface Drives
- Three new Marine Air A/C chillers
- Racor fuel filters
- Pro-Nautic 12-10p charger
- Dolphin 24V charger
- Fire system (model 740-700 MA)
- Extra spare parts

Update 2021

- Full detail on the hull and top side April 2021
- Bottom Job
- All Running Gear has been fully serviced
- Three new AC chillers
- Engines and generator fully serviced

Exclusions

Owner's personal belongings.

Disclaimer

The Company offers the details of this vessel or yacht in good faith but cannot guarantee or warrant the accuracy of this information nor warrant the condition of the vessel. A buyer should instruct his representatives, agents, or his surveyors, to investigate such details as the buyer desires validated. This vessel or yacht is offered subject to prior sale, price change, or withdrawal without notice.

PHOTOS

DLP06629-HDR



DLP06407



DLP06410



DLP06413



DLP06425



DLP06440



DLP06443



DLP06455 (1)



DLP06455



DLP06461



DLP06470



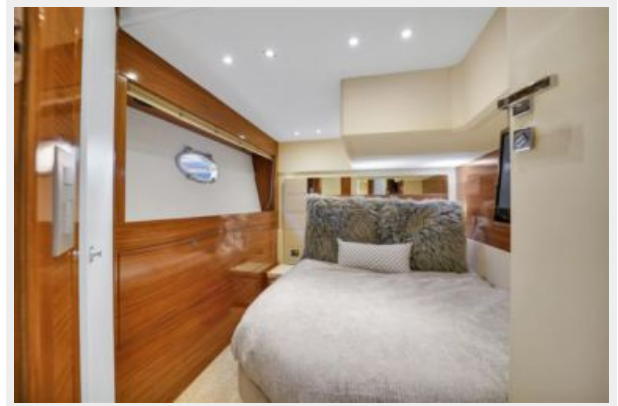
DLP06473



DLP06494



DLP06503



DLP06518



DLP06581-HDR



DLP06533



DLP06539



DLP06557



DLP06602-HDR



DLP06629-HDR



CONTACTS

Andrey Shestakov, leading yacht broker of the sales department of Shestakov Yacht Sales Inc. Shestakov Yacht Sales Inc., the official representative of the Miami/Fort Lauderdale FL headquarters.

Contact details

Email: andrey@shestakovyachtsales.com

Web: shestakovyachtsales.com/en/

Telephones

USA: +1(954)274-4435

Office hours

Monday – Saturday: **9:00 - 21:00** EDT

Sunday: **closed**

Address



Harbour Towne Marina, 850 NE 3rd St,
STE 213, Dania, FL 33004