

## CRAZY LOVE — NOVA MARINE



**Builder:** NOVA MARINE

**Year Built:** 1989

**Model:** Motor Yacht

**Price:** PRICE ON APPLICATION

**Location:** United States

**LOA:** 44' 0" (13.41m)

**Beam:** 15' 0" (4.57m)

**Min Draft:** 3' 6" (1.07m)

**Cruise Speed:** 9 Kts. (10 MPH)

**Max Speed:** 17 Kts. (20 MPH)

Our experienced yacht broker, Andrey Shestakov, will help you choose and buy a yacht that best suits your needs **Crazy Love — NOVA MARINE** from our catalogue. Presently, at Shestakov Yacht Sales Inc., we have a wide variety of yachts available on our sale's list. We also work in close contact with all the big yacht manufacturers from all over the world.

If you would like to buy a yacht **Crazy Love — NOVA MARINE** or would like help answering any questions concerning purchasing, selling or chartering a yacht, please call **+1(954)274-4435**

# TABLE OF CONTENTS

---

TABLE OF CONTENTS	2
SPECIFICATIONS	6
Overview	6
Basic Information	6
Dimensions	6
Speed, Capacities and Weight	6
Accommodations	6
Hull and Deck Information	7
Engine Information	7
DETAILED INFORMATION	8
MAIN DESCRIPTION	8
44' Nova Vessel Walkthrough	8
44' Nova Accommodations	8
44' Nova Salon	9
44' Nova Galley	9
44' Nova Dining	9
44' Nova Master Stateroom	9
44' Nova Guest Stateroom	9
44' Nova Flybridge	9
44' Nova Aft Sundeck	10
44' Nova Audio/Visual Equipment	10
44' Nova Electrical System	10
44' Nova Electronics and Navigations	10
44' Nova Engine/Mechanical Equipment	11
44' Nova Deck Equipment	11
44' Nova Solar Power Equipment	12
44' Nova Tender	12
44' Nova Safety Equipment	12

44' Nova Exclusions	13
DISCLAIMER	13
Exclusions	13
Disclaimer	13
PHOTOS	14
1 crazy love 1	14
2 Aft Port	14
3 Aft Stb	14
4 Stern	14
5 Aft Salon	15
6 Aft Salon	15
8 Aft Salon	15
7 Aft Salon	15
10 Bridge	16
9 Aft Salon	16
11 Bridge	16
12 Bridge	16
13 Helm	17
14 Bow	17
15 Main Salon	17
16 Main Salon	17
17 Main Solan	17
18 Dinette	17
19 Fwd Galley	18
20 Galley	18
21 Galley	18
22 Galley	18
23 Fwd Galley	19
24 Fwd Head	19

---

25 Fwd Berth	19
25 Fwd Head	19
26 Fwd Berth	20
27 Fwd Berth	20
28 Salon Port	20
29 Salon Stb	20
30 Salon Stb	21
31 Lower Stb Stairs	21
32 Aft Berth	21
33 Aft Berth	21
34 Aft Head	22
35 Aft Head	22
36 Stb Gun	22
37 Bow	22
38 Bow	23
39 Anchor	23
41 Brow	23
40 Anchor	23
42 Port Gun	24
43 Port Gun	24
44 Stb Gun	24
45 Engine Rm	24
46 Engine Rm	25
47 Engine Rm	25
48 AC unit	25
49 Main Panel	25
51 Solar Control Frame	26
50 Gene Panel	26
52 Wifi Temp	26

---

---

53 Solar Panels	26
54 Tender	27
55 Last Overall	27
CONTACTS	28
Contact details	28
Telephones	28
Office hours	28
Address	28

---

# SPECIFICATIONS

---

## Overview

---

Crazy Love is a 1989 44' Nova Embassy Motor Yacht also known as a Sundeck Motor Yacht. She is in good condition. Crazy Love offers a twin Caterpillar 3208 TA with 375 hp diesel engines, an Onan 8 kW generator, extensive upgrades to systems including professionally installed electrical panel and wiring system. It's a very popular motor yacht with the easy access to the flybridge, roomy two-stateroom with galley down. Crazy Love is a Great Loop veteran, is ready to cast off and do another or head to the Bahamas again.

## Basic Information

---

**Category:** Motor Yacht

**Model Year:** 1989

**Year Built:** 1989

**Country:** United States

## Dimensions

---

**LOA:** 44' 0" (13.41m)

**Beam:** 15' 0" (4.57m)

**Min Draft:** 3' 6" (1.07m)

**Clearance:** 16' 0" (4.88m)

## Speed, Capacities and Weight

---

**Cruise Speed:** 9 Kts. (10 MPH)

**Max Speed:** 17 Kts. (20 MPH)

**Water Capacity:** 200 Gallons

**Holding Tank:** 40 Gallons

**Fuel Capacity:** 575 Gallons

## Accommodations

---

**Total Cabins:** 2

**Total Heads:** 2

---

## Hull and Deck Information

---

**Hull Material:** Fiberglass

## Engine Information

---

**Engines:** 2

**Manufacturer:** Caterpillar

**Model:** 3208 TA

**Engine Type:** Inboard

**Fuel Type:** Diesel

---

# DETAILED INFORMATION

---

## MAIN DESCRIPTION

---

Crazy Love is a 1989 44' Nova Embassy Motor Yacht also known as a Sundeck Motor Yacht. She is in good condition. Crazy Love offers a twin Caterpillar 3208 TA with 375 hp diesel engines, an Onan 8 kW generator, extensive upgrades to systems including professionally installed electrical panel and wiring system. It's a very popular motor yacht with the easy access to the flybridge, roomy two-stateroom with galley down. Crazy Love is a Great Loop veteran, is ready to cast off and do another or head to the Bahamas again.

## 44' Nova Vessel Walkthrough

---

Crazy Love can be entered from the swim platform through the aft sundeck via the transom door or a by-pass is on either side of the mid-ship guard rails to be lifted up and walk the gunnel. From the aft sundeck you can walk out either side deck through the plastic wing doors, step a few stairs up to enter the flybridge or a few steps down to the lower salon through the doorway. Walking up to the flybridge you will notice a 360 view through the new canvas and Esiinglass. The helm station is laid out with updated electronics, seating for 2 behind the helm wheel and seating forward for passengers comfortably. On the bridge you will have access to your tender and davit. If you enter the lower salon from the aft sundeck, you will notice the beautiful wood work throughout. The interior bulkheads are teak and the sole is teak and holly which are in good condition. The main salon has a large L-shape couch on the port side and a TV/Master Panel to the starboard side. Walk down to the galley on the port side you will see deep stainless sinks, a large refrigerator, microwave and a 2 burner induction cooktop. To the starboard you'll see a large dinette that drops down to a sleeping berth. Forward you have a guest stateroom and a head and shower. Walking aft of the boat you will enter a full beam master stateroom. This has a very large berth to sleep comfortable, a large master head and walk in shower. From the aft sundeck you can walk through the wing doors to get to the wide gunnels with sturdy hand rails to go to the bow or just walk around.

The headroom in the salon is 6'5", in the guest stateroom 6'5", the guest shower 6'5", in the master stateroom 6'5", in the master shower 6' 2", on the sundeck 6'7" and 7'2" on the flybridge. The master stateroom berth is 6'5" long and the guest stateroom berths are 6'5" long.

## 44' Nova Accommodations

---

Crazy Love offers a full beam aft Master Stateroom with ensuite head and walk in shower and new topper for the bed. Forward guest stateroom has a large bed with new topper, a head and walk in shower.



---

## 44' Nova Salon

---

The Salon offers a large L-Shape couch with storage on the port side. Entertainment center is on the starboard side with access to the master control panel. Sole is teak in holly with access to the engine room and large windows to bring in the natural light.

---

## 44' Nova Galley

---

The galley is located in the salon area on the port side with double stainless steel sinks good ventilation and plenty of light and storage.

- Eurodib 2 induction burner surface unit
- Norcold AC/DC Refrigerator and Freezer
- Kenmore elite 1500 W Convection oven Microwave
- Toaster oven & separate toaster

---

## 44' Nova Dining

---

Dining space is available on the starboard side across the galley. The seating is in a large U shape with a table in the center which drops down with a crank for extra sleeping arrangements.

---

## 44' Nova Master Stateroom

---

The full beam aft master stateroom offers a queen size berth, nightstands, reading lights, 1 Large transom hatch and windows for loads of natural light and TV. Also includes drapes, hanging lockers, storage cabinets, drawers and ensuite head with enclosed shower.

---

## 44' Nova Guest Stateroom

---

The guest stateroom is located forward and offers large berth, 2 portholes and overhead hatch for plenty of natural light, ventilation, hanging locker, line locker, storage cabinet, drawers, shelves, reading lights, access to an ensuite head.

---

## 44' Nova Flybridge

---

The huge flybridge offers new canvas top and U-zip Esiinglass enclosure, radar arch, non-skid deck. Helm located aft port with pedestal helm and passenger seats. Passenger molded seating in forward of the helm, storage lockers underneath. Flybridge is fitted with venture windshield,

stainless steel hand rails and access to the tender. A mount is available for a scooter to be mounted on top of roof of Sundeck.

---

## 44' Nova Aft Sundeck

---

Large aft hardtop with nonskid-deck, wicker furniture for seating and a small dinette for 2 on the port side. It offers new canvas and U-zip Esinglass enclosure. The aft deck also has a refrigerator, ice maker and a wet bar with a new facet. It's equipped with speakers and lighting fixtures. Has 2 clear plastic wing doors for each side and aft door to the swim platform.

- Aft deck has a Danby 110 v Refrigerator and a portable icemaker

---

## 44' Nova Audio/Visual Equipment

---

- Fusion MD 650 Stereo Head unit (Bluetooth control, Sirius compatible)
- Remote volume control on Flybridge, Sundeck, Salon
- TCL 30 inch flat screen with Roku TV with HD antenna on Radar Arch
- TV and DVD player in Master Stateroom

---

## 44' Nova Electrical System

---

- Onon 8 kW Generator with a Racor 500 filter 253 hrs
- Seprate group 34 marine AGM batteries maintained by Sterling battery charger
- New Onan marine control panel for Generator in Master Control Panel
- All new LED lighting fixtures throughout
- Complete rewiring of electrical system under supervision of ABYC master electrician.
- New house battery bank 12volt 1000Ah capacity (8 6v Fall River AGM)
- New Victron 3000W Multi plus inverter charger
- New Sterling Battery Charger as backup for House, Start, and Generator Batteries
- New Electrical Master Control panel includes
- Victron Color Control panel
- Victron BMV-712 smart battery monitor
- New Blue Sea Systems A/C & D/C breaker panel
- New circuit breakers for all circuits
- BlueSea Systems 240v selector switch for port/starboard shore power connections
- 50 ft 250V/50A shore power cord

---

## 44' Nova Electronics and Navigations

---

- Garmin system on NMEA 2000 backbone

- Garmin VHF 200
- Garmin GPS map 7216xsv
- Garmin 541s (Used as Sonar display)
- Garmin HD radar
- Garmin GHC 20 Auto Pilot
- Garmin AIS 600 Transponder/receiver
- West Marine VHF480 (backup radio)
- Ritchie Compass 4" Flush mounted
- 12-Volt GOLight Spotlight remote controlled with hand held and/or helm station
- Loud Hailer / electronic Fog horn controlled with Garmin VHF
- Navigation/Anchor lights are LED
- Island Time Wifi booster with integrated network router
- Ambient weather station
- Air horn

---

## 44' Nova Engine/Mechanical Equipment

---

- Twin Cat 3208 TA 375 Hp with 3280 hrs
- Morse engine controls dual lever
- Single Station Capilano hydraulic system
- Murphy Temperature switch gauges for temperature monitoring
- Aqua alarm low flow raw cooling water monitors with alarms at helm
- Racor 900 FG on each engine with pressure gauge
- Oil changing system for both engines
- Fresh water cooled with temperature gauges and alarms
- Gauges for engine temperature, oil, volts and tachometers on the helm and engine room
- Exhaust canisters with water inlet fitting at turbo charging exhaust
- Ventilation (3) 12 v blowers and induction vents port and starboard
- Caterpillar, Twin Disc model MG507-1, 1.51:1 ratio marine reduction gears.
- Two zone 16,000 btu units reverse cycle air conditioning/heating system
- Jabsco macerating toilets and Purosan treatment system
- New Water Witch high water alarm
- New Aqua Alarm controls for bilge
- 6 gallon electric water heater
- Spare propellers

---

## 44' Nova Deck Equipment

---

- Maxwell 2200 anchor windlass with foot pedal controls and at the helm
- Rocna Vulcan 33 (75lb) anchor
- 30ft, 1 in diameter twisted nylon bridle with mantus chain clamp
- 125 ft chain

- Groco wash down pump with hose at bow pulpit
- Spare Danforth style anchor with 200 ft rode
- Anchor platform with roller
- Foredeck built in storage boxes
- Stainless steel bow/side/stern rails with gates
- Fender caddies
- Sundeck enclosed with safety railing
- Fresh water washdown
- Textilene covers
- Dockside water inlet with sanitation filter
- Boarding ladder
- Dock box on bow of boat
- Propane grill on aft Sundeck with spare tank

---

## 44' Nova Solar Power Equipment

---

- (3) 350 watt LG solar panels, charging while at anchor or at port
- Victron 150/70 Solar charge controller
- Victron 75/30 Solar charge controller
- Solar system integrated to Victron Color Control Panel
- The Solar power will run all systems while at anchor without generator

---

## 44' Nova Tender

---

- Aria 10.5'
- 20 HP Tohatsu outboard motor
- Group 24 start battery in box
- Spare tank
- Bridle and tow line
- Anchor
- 1000 lb Davit with remote

---

## 44' Nova Safety Equipment

---

- Solas EPIRB recertification in 2020
- Ten orange standard life preservers
- Safety Flares 2021
- Emergency air horn
- USCG throw ring
- Fog bell
- Dual Horn Trumpet

- First Alert Smoke detectors
- Nav. Lights

---

## 44' Nova Exclusions

---

- Sellers artwork
- Nest Cameras
- Amazon Echo Dot
- Tools Automatic Inflations PFD (2)
- Personal belongings

---

## DISCLAIMER

---

The Company offers the details of this vessel in good faith but cannot guarantee or warrant the accuracy of this information nor warrant the condition of the vessel. A buyer should instruct his agents, or his surveyors, to investigate such details as the buyer desires validated. This vessel is offered subject to prior sale, price change, or withdrawal without notice.

---

## Exclusions

---

Owner's personal belongings.

---

## Disclaimer

---

The Company offers the details of this vessel or yacht in good faith but cannot guarantee or warrant the accuracy of this information nor warrant the condition of the vessel. A buyer should instruct his representatives, agents, or his surveyors, to investigate such details as the buyer desires validated. This vessel or yacht is offered subject to prior sale, price change, or withdrawal without notice.

# PHOTOS

1 crazy love 1



2 Aft Port



3 Aft Stb



4 Stern



**5 Aft Salon**



**6 Aft Salon**



**8 Aft Salon**



**7 Aft Salon**



**9 Aft Salon**



**10 Bridge**



**11 Bridge**



**12 Bridge**





13 Helm



14 Bow



15 Main Salon



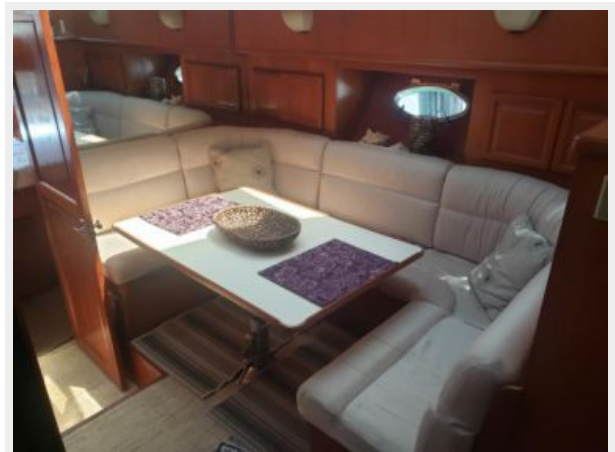
16 Main Salon



17 Main Solan



18 Dinette



**19 Fwd Galley**



**20 Galley**



**21 Galley**



**22 Galley**



**23 Fwd Galley**



**24 Fwd Head**



**25 Fwd Berth**



**25 Fwd Head**



**26 Fwd Berth**



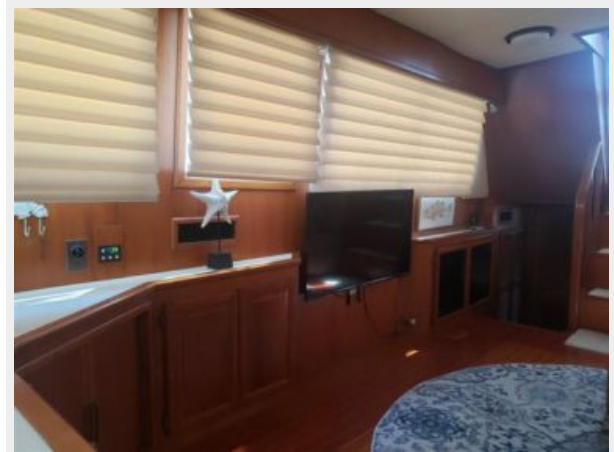
**27 Fwd Berth**



**28 Salon Port**



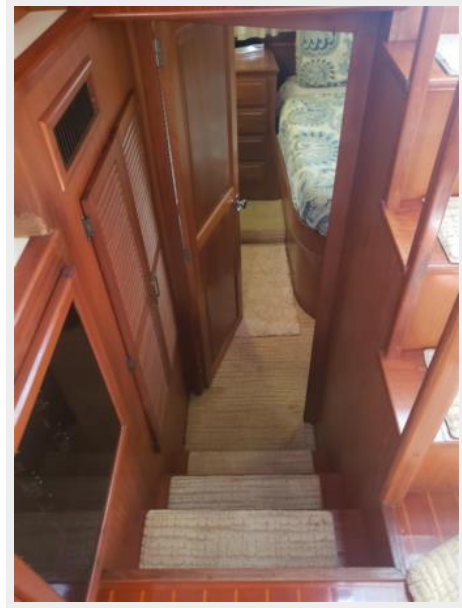
**29 Salon Stb**



**30 Salon Stb**



**31 Lower Stb Stairs**



**32 Aft Berth**



**33 Aft Berth**



**34 Aft Head**



**35 Aft Head**



**36 Stb Gun**



**37 Bow**



**38 Bow**



**39 Anchor**



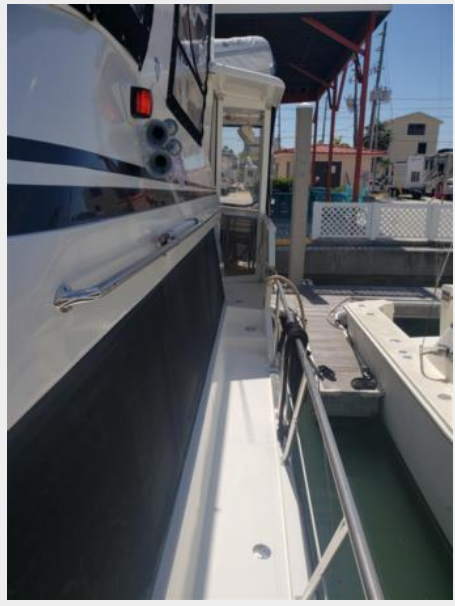
**40 Anchor**



**41 Bow**



**42 Port Gun**



**43 Port Gun**



**44 Stb Gun**



**45 Engine Rm**

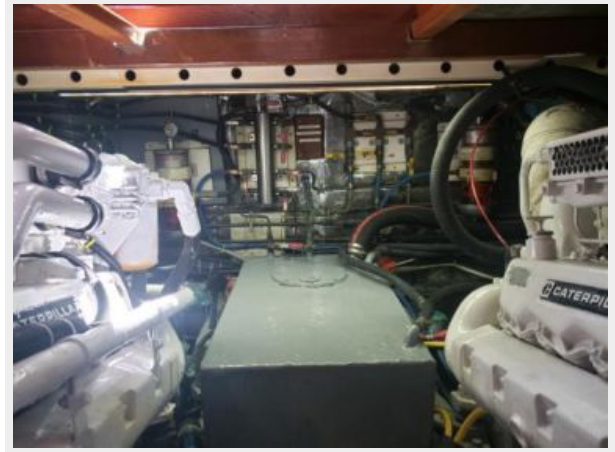




**46 Engine Rm**



**47 Engine Rm**



**48 AC unit**



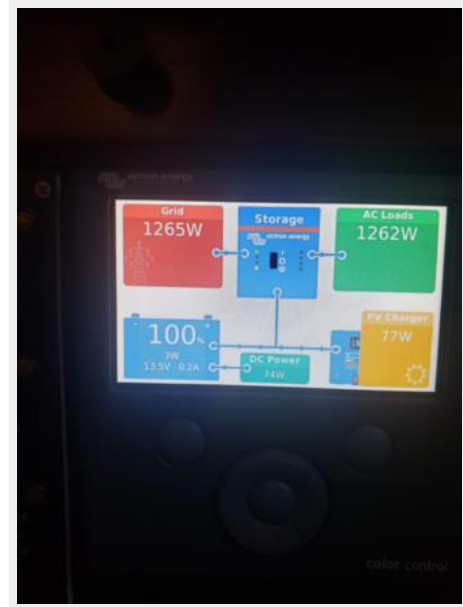
**49 Main Panel**



50 Gene Panel



51 Solar Control Frame



52 Wifi Temp



53 Solar Panels



### 54 Tender



### 55 Last Overall



# CONTACTS

---

Andrey Shestakov, leading yacht broker of the sales department of Shestakov Yacht Sales Inc. Shestakov Yacht Sales Inc., the official representative of the Miami/Fort Lauderdale FL headquarters.

## Contact details

---

Email: [andrey@shestakovyachtsales.com](mailto:andrey@shestakovyachtsales.com)

Web: [shestakovyachtsales.com/en/](http://shestakovyachtsales.com/en/)

## Telephones

---

USA: +1(954)274-4435

## Office hours

---

Monday – Saturday: **9:00 - 21:00** EDT

Sunday: **closed**

## Address

---



Harbour Towne Marina, 850 NE 3rd St,  
STE 213, Dania, FL 33004