

GRAMERCY 28 — CHEOY LEE



Судостроитель: CHEOY LEE

Год постройки: 2013

Модель: Моторная яхта

Цена: **ЦЕНА ЯХТЫ ПО ЗАПРОСУ**

Местонахождение: United States

Длина общая: 76' 0" (23.16m)

Ширина: 19' 8" (5.99m)

Макс. осадка: 5' 5" (1.65m)

Крейс. скорость: 30 Kts. (35 MPH)

Макс. скорость: 38 Kts. (44 MPH)

Купить Gramercy 28 — CHEOY LEE а также выбрать подходящую вам яхту из нашего каталога яхт вам поможет опытный яхтенный брокер Андрей Шестаков. На сегодняшний день компания Shestakov Yacht Sales Inc. имеет большое количество яхт в собственном списке продаж, а также тесно сотрудничает со всеми крупными яхтенными производителями по всему миру.

Для того чтобы купить яхту Gramercy 28 — CHEOY LEE а также проконсультироваться по любому вопросу связанному с покупкой, продажей, чартером яхт позвоните по телефону **+7(918)465-66-44**.

ОГЛАВЛЕНИЕ

ОГЛАВЛЕНИЕ	2
ХАРАКТЕРИСТИКИ	4
Обзор	4
Основная информация	4
Размеры	4
Скорость, вместимость и масса	4
Размещение	4
Корпус и палуба	5
Информация о двигателе	5
ПОДРОБНОЕ ОПИСАНИЕ	6
Accommodations	6
Construction and Machinery	7
Engines and Mechanical Systems	7
Electrical Systems	8
Navigation and Vessel Systems	8
Recent Upgrades	9
Disclaimer	9
Исключения	10
Отказ от ответственности	10
ФОТОГРАФИИ	11
2_2013 76ft Cheoy Lee Alpha 76 GRAMERCY 28	11
3_2013 76ft Cheoy Lee Alpha 76 GRAMERCY 28	11
4_2013 76ft Cheoy Lee Alpha 76 GRAMERCY 28	11
5_2013 76ft Cheoy Lee Alpha 76 GRAMERCY 28	11
6_2013 76ft Cheoy Lee Alpha 76 GRAMERCY 28	11
7_2013 76ft Cheoy Lee Alpha 76 GRAMERCY 28	11
8_2013 76ft Cheoy Lee Alpha 76 GRAMERCY 28	12
9_2013 76ft Cheoy Lee Alpha 76 GRAMERCY 28	12

10_2013 76ft Cheoy Lee Alpha 76 GRAMERCY 28	12
11_2013 76ft Cheoy Lee Alpha 76 GRAMERCY 28	12
12_2013 76ft Cheoy Lee Alpha 76 GRAMERCY 28	12
13_2013 76ft Cheoy Lee Alpha 76 GRAMERCY 28	12
14_2013 76ft Cheoy Lee Alpha 76 GRAMERCY 28	13
15_2013 76ft Cheoy Lee Alpha 76 GRAMERCY 28	13
16_2013 76ft Cheoy Lee Alpha 76 GRAMERCY 28	13
17_2013 76ft Cheoy Lee Alpha 76 GRAMERCY 28	13
19_2013 76ft Cheoy Lee Alpha 76 GRAMERCY 28	13
18_2013 76ft Cheoy Lee Alpha 76 GRAMERCY 28	13
20_2013 76ft Cheoy Lee Alpha 76 GRAMERCY 28	14
21_2013 76ft Cheoy Lee Alpha 76 GRAMERCY 28	14
22_2013 76ft Cheoy Lee Alpha 76 GRAMERCY 28	14
23_2013 76ft Cheoy Lee Alpha 76 GRAMERCY 28	14
24_2013 76ft Cheoy Lee Alpha 76 GRAMERCY 28	14
25_2013 76ft Cheoy Lee Alpha 76 GRAMERCY 28	14
КОНТАКТЫ	15
Контактная информация	15
Телефоны	15
Время работы	15
Адрес	15

ХАРАКТЕРИСТИКИ

Обзор

“Gramercy 28” is every bit of her 76’ LOA, and at the same time, retains an undeniable sleekness in her lines with her rounded design. She is essentially an express cruiser with a flying bridge on top. Simply gorgeous interior space with plenty of room for entertaining or relaxing. The **Cheoy Lee Alpha 76** performs with excellence and boasts many upgrades. Maintained full time by crew.

Основная информация

Тип судна: Моторная яхта	Подкатегория: Flybridge
Модельный год: 2013	Год постройки: 2013
Страна: United States	Открытая палуба мостика: Да

Размеры

Длина общая: 76' 0" (23.16m)	Длина по ватерлинии: 59' 5" (18.11m)
Ширина: 19' 8" (5.99m)	Макс. осадка: 5' 5" (1.65m)

Скорость, вместимость и масса

Крейс. скорость: 30 Kts. (35 MPH)	Макс. скорость: 38 Kts. (44 MPH)
Вместимость воды: 264 Gallons	Вместимость сточного бака: 370 Gallons
Объем топливного бака: 1100 Gallons	

Размещение

Всего кают: 3	Всего ком. состава: 4
----------------------	------------------------------

Корпус и палуба

Материал корпуса: Fiberglass

Информация о двигателе

Двигатели: 2

Производитель: Caterpillar

Модель: C-32 Acert

Тип двигателя: Inboard

Тип топлива: Diesel

ПОДРОБНОЕ ОПИСАНИЕ

Accommodations

AFT DECK

- Aft deck dining area sits immediately ahead of an island sun pad
- Sun shade provided by an awning that powers out from a sleek compartment in the hardtop
- 4-person hot tub beneath the sunpad

SALON

- Spacious Salon for entertaining on main deck
- Precise joinery, meticulous design and attention to detail define the Luis deBasto interior
- Comfortable elevated settee with upgraded stone table next to helm station allows for exquisite views while cruising
- Complete helm station with a double wide Stidd helm chair

GALLEY

- Centrally located on the main deck, the galley serves the dining area, aft deck, flybridge and fore deck seating areas.
- Miele electric cooktop
- Miele stainless steel microwave/convection oven with hood
- Miele stainless steel refrigerator/freezer
- Miele stainless steel dishwasher
- Garbage compactor
- U-Line wine refrigerator

MASTER STATEROOM WITH EN SUITE BATH

- Full beam Master offers bright space and sea views that create the perfect atmosphere to relax and unwind
- Large hull side windows that extend through into the ensuite bathroom and cedar lined walk in wardrobe
- Marble lined master head includes a large jacuzzi tub

GUEST STATEROOMS WITH EN SUITE HEADS

- (2) Spacious Guest Staterooms; one port and one forward
- Both w/ island double berths and en suite heads
- Abundant storage

LOWER DECK

- Foyer

- Day head
- Laundry Room equipped with washer and dryer, and fitted with linen storage lockers

CREW

Two crew can be accommodated aft with separate access to their self contained quarters from aft deck

Construction and Machinery

Cheoy Lee coupled the talents of an impressive design team to deliver the Alpha 76 Flybridge. Fast, efficient and remarkably dry hull design by Michael Peters Yacht Design is an aggressive performer. Composite structural engineering specialist Gurit was contracted to develop the monocoque structure to meet the structural standards of Germanischer Lloyd classification society. To minimize vibration the interior was built on a floating framework, isolated from the hull and support members. Integrated tankage offers 'double bottom' for safety benefits and prevents corrosion associated with metal tanks. Nestled within the Michael Peters hull is a sumptuously crafted interior conceived by Luis deBasto.

Engines and Mechanical Systems

- Twin Caterpillar C32 ACERT diesel engines @ 1900 hp eachZF transmissions
- ZIPWAKE Dynamic Trim Control system for comfort and stability
- Aquamet 22 propeller shafts
- Stainless steel rudder blades by Western Branch Metals
- Stainless steel rudder stocks
- 4-blade, dynamically balanced propellers
- Visionex shaft and rudder bearings
- NEW rudder seals
- Tides Marine packless shaft seals
- Hydraulic system with bow thruster
- Engine mounted instrument panels
- Transom exhausts and fiberglass mufflers from Marine Exhaust Systems
- Onan 'Quiet Diesel' generator, with sound shield
- Concealed generator exhaust with gas/water separator
- GRP diamond plate engine room sole
- Chilled water air conditioning with soft starters
- Defroster for windscreen glass
- Microprocessor controlled engine room ventilating system
- Demisters on air intakes
- Auto/manual FM200 firefighting system
- FM200 alarms with automatic blower shutoff and inlet damper closure
- Power hydraulic steering system

- Dual Racor fuel filters/water separators with vacuum gauges
- Webasto Isotherm dual element 20 gal / 75 l water heater
- Headhunter Mach 5 AC fresh water pump and accumulator tank
- Cartridge style whole system fresh water filter
- Automatic sump pumps for crew and master heads
- Seven (7) automatic bilge pumps
- High level bilge alarms
- Black water dockside pump out or overboard discharge
- Groco strainers for all sea water pump intakes
- Bronze ball valves and through-hull fittings below waterline
- Mylar faced synthetic lead-foam insulation. Vibration mounts for main engines and generator
- Fire and smoke detectors
- Watertight doors to crew quarters and master stateroom
- Reverso oil change system for engines, transmissions and generator
- Water maker

Electrical Systems

- AC and DC electrical panels with breakers for all circuits
- 2 x 12v battery banks with cross over for generator start/audio-visual service
- Battery parallel system for main engine start batteries
- Automatic LED wardrobe lights
- LED navigation lights
- Remote controlled ACR 100 searchlight
- AC receptacles in galley, heads, engine room, laundry and exterior have GFI protection
- 100A shore power inlet with 100' cable
- Glendinning Cablemaster, shore power cable retrieval system
- Copper bonding of through-hull fittings and equipment to exterior hull anodes
- Dynaplate with strap to ground terminal boards
- CO detectors in all living spaces

Navigation and Vessel Systems

- Furuno TZT9 Navigation System
- Two Furuno 19" Screens In Pilothouse
- Garmin 19" Touch Screen on Flybridge
- Furuno 19 Screens On Flybridge
- Furuno DRS6A 64nm Radar
- Furuno DFF1 Digital Sounder
- Furuno GP330B GPS/WAAS
- Furuno Navpilot 711 Autopilot

- Simrad RS25 VHF
- Simrad RS35 VHF
- NEW 19" Garmin GPS 8500 Series with full engine display
- Magnetic Compass
- Sat TV System
- LED navigation lights
- LED overhead and courtesy lighting
- Maretron control system with repeater on flybridge
- Chilled water air conditioning with soft starters
- Microprocessor controlled engine room ventilating system
- Auto/manual FM200 firefighting system, alarms with automatic blower shutoff and inlet damper closure
- Power hydraulic steering system, including valves for autopilot installation
- Engine driven emergency bilge pump
- ZIPWAKE fully automated active interceptor system for comfort and stability
- Defroster for pilothouse windscreen glass
- Demisters on air intakes
- Remote controlled ACR 100 searchlight
- Large sports locker under aft deck sunbed
- Swim ladder
- Electric windlass, 200' / 60m High Test chain and 50kg Bruce type anchor
- 100A shore power inlet with 100' cable on Glendinning Cablemaster
- ZF 5200 Low Profile electronic engine controls
- ZF JMS joystick maneuvering system with extra ZF joystick on aft deck
- PPI dual helm seats at upper and lower stations
- Electric heads (fresh water flush)
- Ariston washer/dryer

Recent Upgrades

Owner has upgraded this yacht for practicality and convenience. Upgrades include but are not limited to Yacht Controller, NEW house batteries, NEW Mastervolt Charger/Inverter, NEW AC chillers with 5 year warranty, NEW 19" Garmin GPS 8500 Series with full engine display, V-KOOL front windows, NEW Simrad VHF, NEW mesh window screens, NEW onyx tables, NEW Sunbrella covers, upgraded stereo with Sonos sound bar, NEW flybridge settees, NEW carpeting and Logitech Elite remotes.

Recently installed Zipwake Dynamic Trim-Control System featuring an advanced, intuitive control system and a stunning new innovative design, Zipwake delivers a more comfortable ride, better performance and improved fuel consumption – whatever the conditions.

Disclaimer

The Company offers the details of this vessel in good faith but cannot guarantee or warrant the accuracy of this information nor warrant the condition of the vessel. A buyer should instruct his agents, or his surveyors, to investigate such details as the buyer desires validated. This vessel is offered subject to prior sale, price change, or withdrawal without notice.

Исключения

При продаже яхты исключаются личные вещи владельца.

Отказ от ответственности

Компания предоставляет описание судна или яхты добросовестно, но не может гарантировать точность этой информации, а также не ручается за техническое состояние. Покупатель должен проинструктировать своих агентов или оценщиков исследовать представленную информацию более подробно, по собственному желанию. Продажа судна или яхты, изменение цены или снятие с продажи будет происходить без предварительного уведомления.

ФОТОГРАФИИ

**2_2013 76ft Cheoy Lee Alpha 76
GRAMERCY 28**



**3_2013 76ft Cheoy Lee Alpha 76
GRAMERCY 28**



**4_2013 76ft Cheoy Lee Alpha 76
GRAMERCY 28**



**5_2013 76ft Cheoy Lee Alpha 76
GRAMERCY 28**



**6_2013 76ft Cheoy Lee Alpha 76
GRAMERCY 28**



**7_2013 76ft Cheoy Lee Alpha 76
GRAMERCY 28**



**8_2013 76ft Cheoy Lee Alpha 76
GRAMERCY 28**



**9_2013 76ft Cheoy Lee Alpha 76
GRAMERCY 28**



**10_2013 76ft Cheoy Lee Alpha 76
GRAMERCY 28**



**11_2013 76ft Cheoy Lee Alpha 76
GRAMERCY 28**



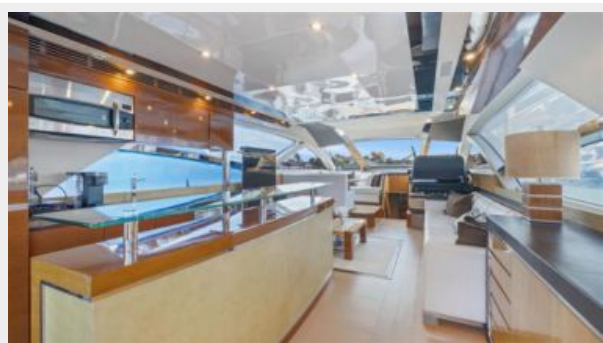
**12_2013 76ft Cheoy Lee Alpha 76
GRAMERCY 28**



**13_2013 76ft Cheoy Lee Alpha 76
GRAMERCY 28**



**14_2013 76ft Cheoy Lee Alpha 76
GRAMERCY 28**



**15_2013 76ft Cheoy Lee Alpha 76
GRAMERCY 28**



**16_2013 76ft Cheoy Lee Alpha 76
GRAMERCY 28**



**17_2013 76ft Cheoy Lee Alpha 76
GRAMERCY 28**



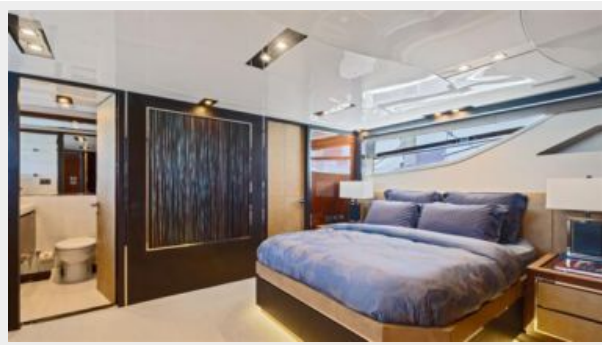
**18_2013 76ft Cheoy Lee Alpha 76
GRAMERCY 28**



**19_2013 76ft Cheoy Lee Alpha 76
GRAMERCY 28**



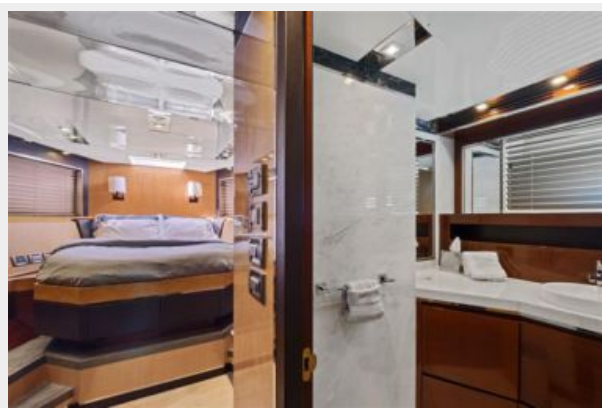
**20_2013 76ft Cheoy Lee Alpha 76
GRAMERCY 28**



**21_2013 76ft Cheoy Lee Alpha 76
GRAMERCY 28**



**22_2013 76ft Cheoy Lee Alpha 76
GRAMERCY 28**



**23_2013 76ft Cheoy Lee Alpha 76
GRAMERCY 28**



**24_2013 76ft Cheoy Lee Alpha 76
GRAMERCY 28**



**25_2013 76ft Cheoy Lee Alpha 76
GRAMERCY 28**



КОНТАКТЫ

Андрей Шестаков (Andrey Shestakov) – ведущий яхтенный брокер отдела продаж яхт и судов компании Shestakov Yacht Sales Inc. Официальный представитель Shestakov Yacht Sales Inc. для русскоговорящих клиентов в центральном офисе компании в Майами/Форт Лодердейл/Флорида/США.

Контактная информация

Email: andrey@shestakovyachtsales.com

Web: shestakovyachtsales.com

Телефоны

Краснодарский край: **+7(918)465-66-44**

США, Майами, Флорида: **+1(954)274-4435**

Время работы

Понедельник – Суббота: **9:00 - 21:00**
EDT

Воскресенье: **Закрито**

Адрес



Harbour Towne Marina, 850 NE 3rd St,
STE 213, Dania, FL 33004