

SQUANDO — SHANNON



Builder: SHANNON

Year Built: 1999

Model: Cruising Sailboat

Price: PRICE ON APPLICATION

Location: United States

LOA: 43' 0" (13.11m)

Beam: 13' 0" (3.96m)

Min Draft: 5' 6" (1.68m)

Max Draft: 8' 7" (2.62m)

Our experienced yacht broker, Andrey Shestakov, will help you choose and buy a yacht that best suits your needs **SQUANDO — SHANNON** from our catalogue. Presently, at Shestakov Yacht Sales Inc., we have a wide variety of yachts available on our sale's list. We also work in close contact with all the big yacht manufacturers from all over the world.

If you would like to buy a yacht **SQUANDO — SHANNON** or would like help answering any questions concerning purchasing, selling or chartering a yacht, please call **+1(954)274-4435**

TABLE OF CONTENTS

TABLE OF CONTENTS	2
SPECIFICATIONS	5
Overview	5
Basic Information	5
Dimensions	5
Speed, Capacities and Weight	5
Accommodations	5
Hull and Deck Information	6
Engine Information	6
DETAILED INFORMATION	7
REMARKS	7
CONSTRUCTION	7
Accommodations	8
NAVIGATION AREA and ELECTRONICS	9
ENTERTAINMENT EQUIPMENT	10
Deck Equipment	10
Cockpit	11
RIG and SAIL HANDLING	11
ENGINE/MECHANICAL EQUIPMENT	12
TANKAGE and PLUMBING	12
ELECTRICAL SYSTEM	13
SAFETY EQUIPMENT	14
EXCLUSIONS	14
Exclusions	14
Disclaimer	15
PHOTOS	16
Mooring	16
Saloon	16

Saloon Table Extended	16
Port Settee	16
Port Settee with Pilot Stowage	16
Starboard Settee	16
Starboard Settee Looking Aft	17
Master Berth, V-berth with Filler	17
Port Side Master Cabin	17
Master Storage, Joinery Detail	17
Master Head	17
Guest Cabin Joinery	17
Nav Instruments	18
Guest Head	18
Raymarine AXIOM at Nav Station	18
Autopilot Control	18
VHF	19
Builders Plaque	19
Galley	19
Refrigeration and Galley Lockers	19
Galley Controls	20
Stereo	20
AC Distribution Panel	20
DC Distribution Panel	20
Cockpit Sailing Instruments	21
EPIRB	21
Autopilot Remote	21
Inverter-Charger	21
Bowsprit	22
Bow	22
Self-tacking Staysail/Traveler	22

Inside Heated Building	22
Nonskid Decks	23
Deck Detail	23
Stainless Hatches	23
Dorade	23
Dodger	24
Cockpit	24
Cockpit Table	24
Nav Pod	24
VHF Remote	24
Electric Winch	24
Winch	25
Centerboard Control	25
Prop	25
Safety Gear	25
Rudder	26
Engine	26
Genset	26
Engine Hours	26
Generator Hours	27
Alternator	27
Fuel Manifold	27
CONTACTS	28
Contact details	28
Telephones	28
Office hours	28
Address	28

SPECIFICATIONS

Overview

Sail away in this proven cruising design. New Raymarine 2019, generator w/ aircon, black Awlgrip, versatile sail plan including storm jib and tri.

Basic Information

Category: Cruising Sailboat

Sub Category: Cruising Ketch

Model Year: 1999

Year Built: 1999

Country: United States

Coast Guard #: 1086056

Vessel Top: Enclosed

Cockpit: Yes

Dimensions

LOA: 43' 0" (13.11m)

LWL: 30' 0" (9.14m)

Beam: 13' 0" (3.96m)

Min Draft: 5' 6" (1.68m)

Max Draft: 8' 7" (2.62m)

Speed, Capacities and Weight

Displacement: 27500 Pounds

Water Capacity: 150 Gallons

Holding Tank: 60 Gallons

Fuel Capacity: 100 Gallons

Accommodations

Total Cabins: 2

Hull and Deck Information

Hull Material: Fiberglass

Deck Material: Nonskid painted

Hull Configuration: Centerboard

Hull Color: Black

Hull Finish: Stainless Steel

Hull Designer: Walter Schultz

Exterior Designer: Walter Schultz

Engine Information

Engines: 1

Manufacturer: westerbeke

Engine Type: Inboard

Fuel Type: Diesel

DETAILED INFORMATION

REMARKS

The Shannon 43 is a perfect couples' cruising yacht of hand-built pedigree. She features a large saloon and galley, great accommodation for guests, a versatile sail plan, protected cockpit and centerboard shoal-draft accessibility.

SQUANDO features a two-cabin, two-head layout with abundant storage. She is beautifully finished below in a raised-panel cherry interior with teak sole boards. The joinery work, finish and hardware detail are first class.

Well cared for by her owner, SQUANDO has benefited from many recent upgrades including Axiom series Raymarine electronics, "Black" Awlgrip topsides, Westerbeke generator, recent sail inventory and interior upholstery.

Currently stored indoors, SQUANDO is easy to view in a heated building.

CONSTRUCTION

HULL

- Fiberglass
- Hull Configuration: Keel/Centerboard
- Centerboard configuration offers a minimum draft of 5'-6" with board up and a maximum draft of 8'-7" with board down

HULL COLOR

- Black

DECK

- Grey non-skid

STEERING

- Edson pedestal with stainless steel wheel, Morse control and Nav Pod for plotter and autopilot

Accommodations

LAYOUT (from Forward)

ANCHOR LOCKER

Forward, with access via the forward master cabin.

MASTER CABIN

Forward V-berth with filler piece. Overhead hatch with OceanAir blind. Plenty of storage can be found in cabinets, shelves, drawers and three hanging lockers. The forward cabin also has its own air-conditioning unit of 7,000 BTU. Additional ventilation from two fans and opening ports. Halogen reading lights. All hatches and opening ports have screens.

EN-SUITE HEAD

Large head to port with receiver-style shower and designated teak grate-covered shower area. Raritan manual head with Y-valve, Corian countertop, sink and locker storage. Both the forward and aft head share a holding tank that can be pumped out via vacuum deck fitting or macerator.

MAIN SALOON

Settee seating port and starboard with upper pilot berth to port used as storage. Centerline drop-leaf table with storage. Settees slide out for wider sleeping berths. Louvered cabinets and bookshelf located outboard of the starboard settee.

GALLEY

U-shaped galley to starboard with Corian countertops, stainless steel double sink, hot and cold pressure water, manual fresh water pump and manual saltwater pump. Filter for drinking water. Dish cabinet storage above the sinks. Useful “counter leaf extension” for additional serving area. Locker storage outboard and below the sinks. Tasco three-burner propane stove with oven. Refrigerator with top-loading and side door access, separate freezer system with top-loading access.

12v DC Sea Frost refrigeration system

- Engine driven freezer compressor
- Additional 110v AC freezer compressor
- Propane shut-off valve
- Fireboy propane solenoid control and sniffer
- Fan

DAY HEAD

Aft of saloon to port with Corian counter, manual Raritan head with Y-valve, opening port and teak shower grate over shower sump.

AFT CABIN

Pocket door access to double berth quarter-cabin with filler piece. Hanging locker with shelves and drawer. Opening hatch and two opening ports. Private entrance into the day head. Access panel to generator aft. Access panel to port side engine.

ENGINE ACCESS

Behind the companionway ladder, the forward end of the engine is easily accessed for service. Racor filters, oil filter, fuel manifold and belts are readily available. Additional access under nav station and via cockpit locker.

NAVIGATION AREA and ELECTRONICS

Aft to starboard. Navigation desk and swivel chair with proper chart table.

- Raymarine 12" AXIOM GPS, HD digital radar, plotter at navigation station with a second AXIOM
- Raymarine 9" AXIOM GPS, HD digital radar plotter display at helm (new 2019)
- Raymarine Autopilot AP600 control head with wired remote
- Raymarine ST60 multi-display
- Raymarine AXIOM sailing instruments, speed, depth and wind located in cockpit (new 2019)
- Bass electrical distribution panels for 12vDC and 110v AC systems
- ICOM ICM504 VHF with command mic at helm
- SEA 235 SSB
- Weems & Plath clock and barometer
- Ritchie compass on pedestal
- Navigation lights
- Passive directional radar sensor

ENTERTAINMENT EQUIPMENT

MAIN SALOON

- Alpine IDA X303 stereo with speakers below and in cockpit

Deck Equipment

ANCHORING

Bowsprit capable of holding three anchors in rollers

- Maxwell windlass
- 60 lb. CQR with 50' of 3/8" HT chain and 150' of 5/8" rode
- Fortress FX-37 secondary anchor with 15' of 3/8" HT chain
- Luke 70 lb. storm anchor with 10' of chain and 3/4" rode

HATCHES and PORTS

- Polished stainless steel hatches and ports
- OceanAir blinds to overhead hatches

DORADES

- Stainless steel dorades with guards and teak boxes

WINCHES (Andersen self-tailing):

In cockpit

- 2-52ST 2 speed
- 1-62ST 2 speed
- 1-62ST 2 speed electric for main halyard

Main mast

- 2-28ST 2 speed
- 1-40ST 2 speed
- 1-10ST 2 speed on boom

Mizzen mast

- 2-12ST 1 speed
- 1-10ST 1 speed on boom

DAVITS

- Stainless steel dinghy davits

CANVAS

- Sunbrella “Toast” dodger and bimini

Cockpit

Protected cockpit with sail locker and engine access under starboard side seating. On the port side there is a shallow locker forward for deck gear such as winch handles and sail ties, plus another locker aft with access to the generator.

Edson pedestal steering with destroyer stainless steel wheel. Single-lever Morse engine and transmission control. Westerbeke engine control panel located at helm to port. Navpod with Raymarine Axiom Hybridtouch display, Raymarine autopilot control head and ICOM CommandMIC VHF. A swinging varnished teak dining table is mounted on the forward end of the pedestal. A full bimini with stainless steel frame protects you from sun and weather. Outboard motor hoist and bracket on port aft rail. Centerboard control. Propane locker located behind helm with two tanks. Hot and cold cockpit deck shower.

RIG and SAIL HANDLING

MAST AND RIGGING

- Ketch rig with white painted aluminum spars
- Stainless steel gallows frame
- Rod rigging
- Forespar whisker pole
- Boom vang
- Single line reefing for 1st and 2nd reef points
- Schaefer mainsheet traveler
- Trisail track
- Heavy duty preventer brake

HEADSAIL FURLING

- Selden Furlex genoa and yankee furlers

SAILS

Sperry Sails

- Mainsail

- Mizzen
- Genoa 150%
- Yankee 135%
- Staysail
- Mizzen staysail
- Storm jib and storm trysail

All sails serviced and washed (2019)

ENGINE/MECHANICAL EQUIPMENT

ENGINE

- Westerbeke, 71 hp

PROPELLER

- Max prop with line cutter (serviced 2019)
- Dripless shaft seal (2019)

ALTERNATORS

- Bamar alternator for house and engine banks

GENERATOR

- Westerbeke 5kW (2004)

AIR CONDITIONING

- (2) Air-conditioning units (7,000BTU and 16,000BTU)

HEATING

- Espar diesel heating system

REFRIGERATION

- SeaFrost engine driven 12vDC and 110vAC systems

TANKAGE and PLUMBING

FUEL:

- 100 gallons total in three stainless steel tanks (2) 29 gallon and (1) 42 gallon)

WATER

- 100 gallon stainless steel tank
- 50 gallon stainless steel tank

WATER MAKER

- Not currently used

SALT WATER WASHDOWN

- For cleaning anchor chain

COCKPIT DECK SHOWER

- Hot and cold shower

TANK GAUGES

- For fuel, water and holding. New sender units (2019)

HOT WATER

- 10 gallon hot water tank

HOLDING TANKS

- 60 gallon stainless steel holding tank with deck and macerator pump out options

ELECTRICAL SYSTEM

DC SUPPLY

- 12v DC

AC SUPPLY

- 110v AC supplied by shoreside power, onboard generator or DC inverter

ELECTRICAL SOCKETS

- 110v AC GFI outlets
- 12v DC outlet at nav station

BATTERIES

- (4) Lifeline AGM 3100T batteries

BATTERY MANAGEMENT

- Xantrex battery monitor

INVERTERS

- Xantrex Freedom 458 inverter charger

SHORE POWER

- (2) 30amp shore power inlets

INTERIOR LIGHTING

- Halogen and fluorescent lighting

SAFETY EQUIPMENT

LIFE RAFT

- 8-person. Located below cockpit under teak grate. (Serviced 2019)

EPIRB

- ACR

BILGE PUMPS

- (2) Electric bilge pumps
- (2) Manual Whale pumps, (1) in cockpit and (1) belowdecks

DECK SAFETY

- M.O.M. system
- Lifesling

FIRE EXTINGUISHERS

- Fireboy CG2 engine room system
- Hand-held extinguishers

EXCLUSIONS

All personal belongings and all other items not expressly listed in the above inventory are excluded from the sale.

Exclusions

Owner's personal belongings.

Disclaimer

The Company offers the details of this vessel or yacht in good faith but cannot guarantee or warrant the accuracy of this information nor warrant the condition of the vessel. A buyer should instruct his representatives, agents, or his surveyors, to investigate such details as the buyer desires validated. This vessel or yacht is offered subject to prior sale, price change, or withdrawal without notice.

PHOTOS

Mooring



Saloon



Saloon Table Extended



Port Settee



Port Settee with Pilot Stowage



Starboard Settee



Starboard Settee Looking Aft



Master Berth, V-berth with Filler



Port Side Master Cabin



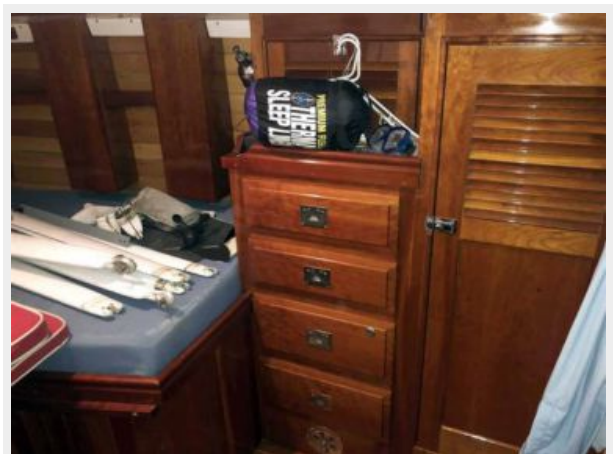
Master Storage, Joinery Detail



Master Head



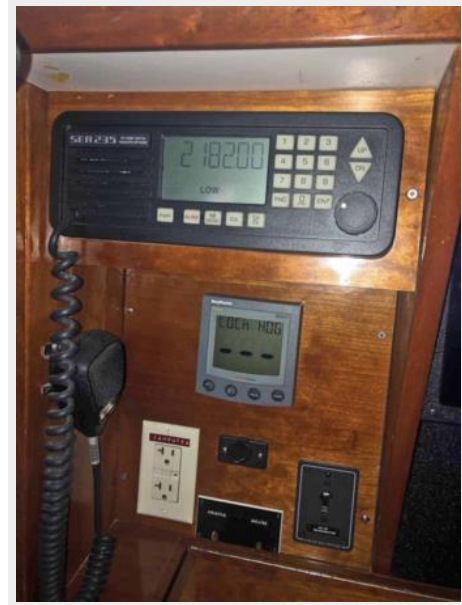
Guest Cabin Joinery



Guest Head



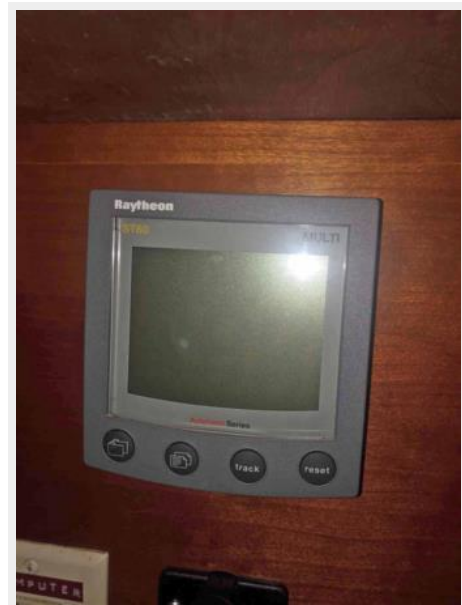
Nav Instruments



Raymarine AXIOM at Nav Station



Autopilot Control



VHF



Builders Plaque



Galley



Refrigeration and Galley Lockers



Galley Controls



Stereo



AC Distribution Panel



DC Distribution Panel



Cockpit Sailing Instruments



EPIRB



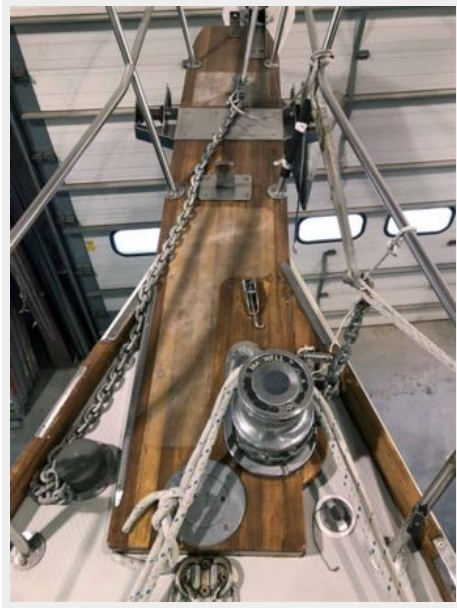
Autopilot Remote



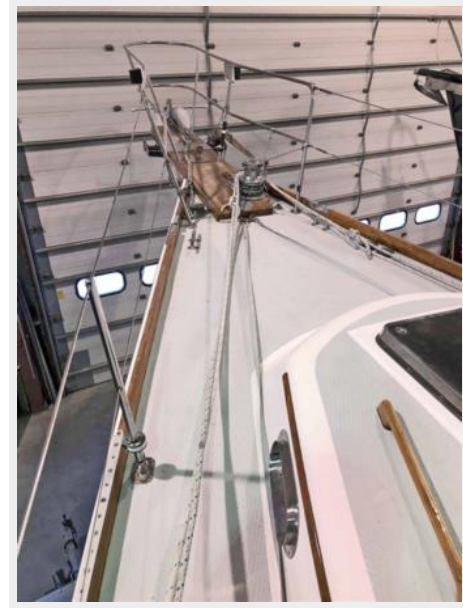
Inverter-Charger



Bowsprit



Bow



Self-tacking Staysail/Traveler



Inside Heated Building



Nonskid Decks



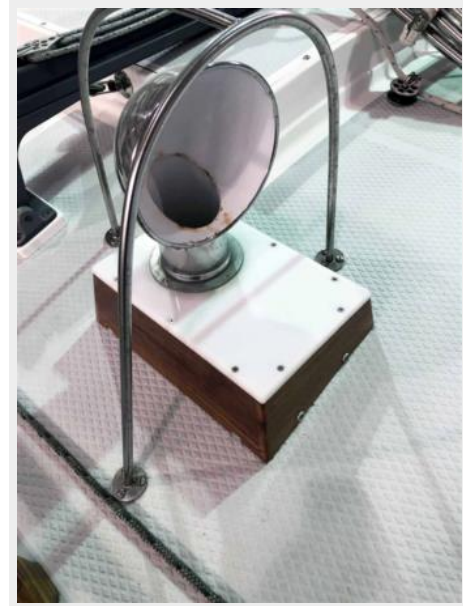
Deck Detail



Stainless Hatches



Dorade



Dodger



Cockpit



Cockpit Table



Nav Pod



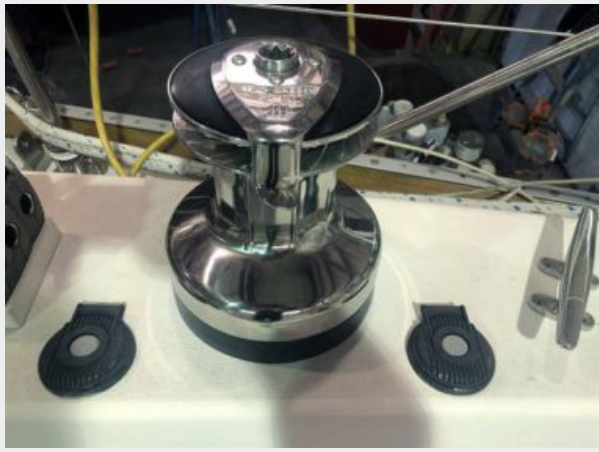
VHF Remote



Electric Winch



Winch



Centerboard Control



Prop



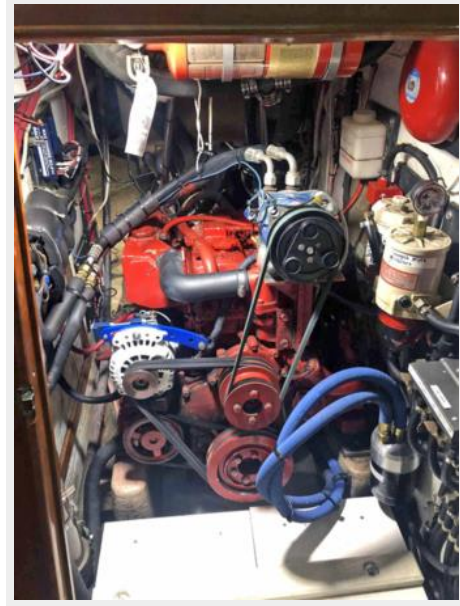
Safety Gear



Rudder



Engine



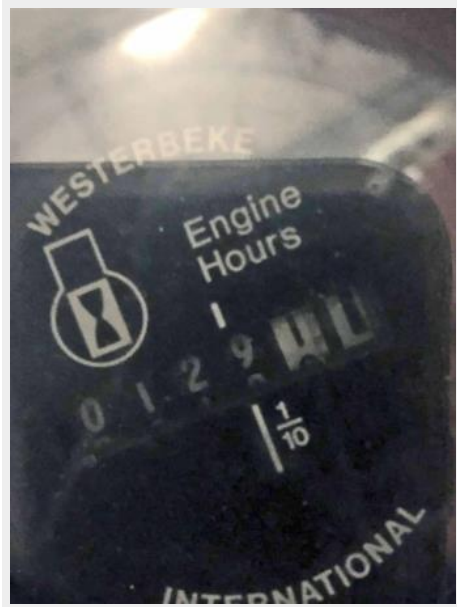
Genset



Engine Hours



Generator Hours



Alternator



Fuel Manifold



CONTACTS

Andrey Shestakov, leading yacht broker of the sales department of Shestakov Yacht Sales Inc. Shestakov Yacht Sales Inc., the official representative of the Miami/Fort Lauderdale FL headquarters.

Contact details

Email: andrey@shestakovyachtsales.com

Web: shestakovyachtsales.com/en/

Telephones

USA: +1(954)274-4435

Office hours

Monday – Saturday: **9:00 - 21:00** EDT

Sunday: **closed**

Address



Harbour Towne Marina, 850 NE 3rd St,
STE 213, Dania, FL 33004