

SURELY A — SEA RAY



Судостроитель: SEA RAY

Год постройки: 2015

Модель: Моторная яхта

Цена: **ЦЕНА ЯХТЫ ПО ЗАПРОСУ**

Местонахождение: United States

Длина общая: 65' 1" (19.84m)

Ширина: 17' 2" (5.23m)

Макс. осадка: 5' 1" (1.55m)

Крейс. скорость: 27 Kts. (31 MPH)

Макс. скорость: 31 Kts. (36 MPH)

Купить Surely A — SEA RAY а также выбрать подходящую вам яхту из нашего каталога яхт вам поможет опытный яхтенный брокер Андрей Шестаков. На сегодняшний день компания Shestakov Yacht Sales Inc. имеет большое количество яхт в собственном списке продаж, а также тесно сотрудничает со всеми крупными яхтенными производителями по всему миру.

Для того чтобы купить яхту Surely A — SEA RAY а также проконсультироваться по любому вопросу связанному с покупкой, продажей, чартером яхт позвоните по телефону **+7(918)465-66-44**.

ОГЛАВЛЕНИЕ

ОГЛАВЛЕНИЕ	2
ХАРАКТЕРИСТИКИ	4
Обзор	4
Основная информация	4
Размеры	4
Скорость, вместимость и масса	4
Размещение	5
Корпус и палуба	5
Информация о двигателе	5
ПОДРОБНОЕ ОПИСАНИЕ	6
Recent Services	6
Highlights	6
Exterior	7
Lazarette/Crew	8
Aft Deck	8
Salon	8
Galley/Dinette	9
Helm/Electronics	9
Lower Companionway	10
Master Stateroom	10
Master Head	10
VIP/Bow Stateroom	10
VIP/Bow Guest Head	11
Port Stateroom	11
Starboard Stateroom	11
Guest Head	12
Engine Room	12
Exclusions	12

Исключения	12
Отказ от ответственности	13
ФОТОГРАФИИ	14
КОНТАКТЫ	27
Контактная информация	27
Телефоны	27
Время работы	27
Адрес	27

ХАРАКТЕРИСТИКИ

Обзор

2016 Sea Ray L650 Express "Surely A" located in Cape Canaveral, FL.

This vessel is a 4 Stateroom + 3 Head layout with the master located mid ship with full beam. The starboard stateroom was converted to a gym with all equipment included. There is a large bow and aft deck seating area with crew quarters to aft. Also included is a hydraulic swim platform with Williams tender!!

Available to be seen by appointment!!

Основная информация

Тип судна: Моторная яхта

Модельный год: 2016

Год постройки: 2015

Страна: United States

Размеры

Длина общая: 65' 1" (19.84m)

Ширина: 17' 2" (5.23m)

Макс. осадка: 5' 1" (1.55m)

Скорость, вместимость и масса

Крейс. скорость: 27 Kts. (31 MPH)

Макс. скорость: 31 Kts. (36 MPH)

Чистый вес: 37 Pounds

Вместимость воды: 280 Gallons

Вместимость сточного бака: 100 Gallons **Объем топливного бака:** 1150 Gallons

Размещение

Всего кают: 4

Всего коек: 4

Спальные места: 6

Всего ком. состава: 2

Каюты экипажа: 1

Койки экипажа: 1

Спальных мест экипажа: 1

Комм. состав экипажа: 1

Корпус и палуба

Материал корпуса: Fiberglass

Информация о двигателе

Двигатели: 2

Производитель: Caterpillar

Модель: C-18

Тип двигателя: Inboard

Тип топлива: Diesel

ПОДРОБНОЕ ОПИСАНИЕ

Recent Services

- 500 Hour Engine Service 1/2021
- Transmission Service 1/2021
- Oil Sample Tests 1/2021
- SeaKeepers Service 12/2020
- Air Conditioning Coral Flushing 12/2020
- New Bottom Job - 8/2021

Highlights

- Twin Caterpillar C18A Engines at 1150HP Each (with 714 Hours as of 4/2021)
- Onan 29kW Diesel Generator (with 1,208 Hours as of 4/2021)
- 2017 Williams SportJet 345 Tender w/ Teak Deck (with 6 Hours as of 4/2021)
- **Yacht Controller**
- (2) Ea. Hydraulic Joystick Docking Stations
- Dual SeaKeeper Gyro Stabilizers Systems
- KVH HD7 Antenna for True HD Programming System
- Pantograph Helm Door
- Additional Fuel Capacity to 1,150 Gals. Total
- Teak Deck/Flooring on All Exterior - Bow, Swim Platform, Aft Deck, and Boarding Steps
- Teak Hydraulic Swim Platform
- (6) Ea. Person Life Raft – Bag Unit
- Blue Underwater Lights
- Sunshade for Bow Seating
- Stainless Steel Anchor
- High Gloss, Teak Table - Aft Deck
- Wet Bar - Aft Deck
- Webber Portable BBQ – Aft Deck
- Interior Walnut Wood Package
- 50" LED Flatscreen w/ Apple TV in Salon
- Sofa with Pullout Bed
- China Place Settings w/ Storage- Dining
- New Freezer Installed – 4/2021
- Wine Cooler - Galley
- Fusion Entertainment System Throughout
- GOST Security System – (4) ea. Cameras – (3) ea. Fixed and (1) ea. Rotate/Tilt/Zoom
- (4) Ea. Person Headset for 100% Communication During Docking
- Raymarine GS165 - 2 Units
- Raymarine i50 Depth Sounder

- Raymarine Network Interface Cameras – Cockpit and Bilge
- Raymarine Sirius Weather Module
- Color Printer/Scanner w/ WiFi Extender
- Full Size Ariston Washer/Dryer
- Safe - Master Stateroom
- Additional DSS Receiver – VIP/Bow, Port, and Starboard Stateroom
- Bunk Conversion - Port Stateroom
- Starboard Stateroom Converted to Gym
- Spectra Compact Watermaker w/ 150 GPD – 12V
- Headhunter Water Pump w/ Ultimate Water Flow and Pressure
- Spare Propeller w/ Holders
- Upgraded Air Conditioning and Heating System
- Transformer Shore Power ISO Boost
- Oil Changer System
- Spare Parts and Tools – Lines, (4) Ea. Set Docking Wireless Communication, Eperb

Exterior

- KVH HD7 Antenna for True HD Programming System: **UPGRADE**
- Pantograph Helm Door: **UPGRADE**
- Teak Deck/Flooring – Bow, Swim Platform, Aft Deck, and Boarding Steps: **UPGRADE**
- Teak Hydraulic Swim Platform: **UPGRADE**
- Blue Underwater Lights: **UPGRADE**
- (6) Ea. Person Life Raft – Bag Unit: **UPGRADE**
- Sunshade for Bow Seating: **UPGRADE**
- Stainless Steel Anchor: **UPGRADE**
- Fusion Stereo System - Bow: **UPGRADE**
- Bow Seating, Cushions, and Sunpad
- Bow rail, Stainless steel w/welded Stanchions
- Engine Room Access Door - Stern
- (10) Cleats, Thru-Bolted - Stainless steel
- Deck Rails, 316 Stainless steel
- Hull Windows, Smoked Acrylic
- Lights Navigation
- Portlights (Opening)
- Vent System, engine room
- Windshield, Tempered/Tinted Glass w/Electric Opening Window (Starboard)
- (3) Windshield wipers

Lazarette/Crew

- A/C (6,000 BTU)
- Converted to Workshop / Storage Room – *All necessary parts are available if buyer wants to put back items to use as crew quarters*
- Vacuflush head
- Mirror
- Storage Cabinets
- Portlight, opening
- Sink w/faucet
- Shower

Aft Deck

- Teak Decking: **UPGRADE**
- High Gloss, Teak Table: **UPGRADE**
- Webber Portable BBQ: **UPGRADE**
- Fusion Stereo System: **UPGRADE**
- Wet Bar: **UPGRADE**
- Gates, Side Boarding (Port & Starboard)
- Shower Head
- Handrails, 316 Stainless Steel
- Seating w/ Storage and Cushions
- Entry Door to Main Salon

Salon

- Air Conditioning/Heating System: **UPGRADE**
- Upgraded Nibanna/Ridge carpets - Interior: **UPGRADE**
- Walnut Wood Blinds: **UPGRADE**
- Sofa with Pullout Bed: **UPGRADE**
- 50" LED Flatscreen w/ Apple TV: **UPGRADE**
- Fusion Stereo System: **UPGRADE**
- (2) Ea. Bar Stools
- Entertainment Center
- Blu-Ray Player
- Wood Flooring
- (2) Ottomans with Movable dual-purpose tops & storage below
- Sofas w/ Storage below
- Storage cabinets

Galley/Dinette

- Wine Cooler: **UPGRADE**
- Pantograph Door - Lower helm/Galley area: **UPGRADE**
- China Place Settings w/ Storage- Dining: **UPGRADE**
- New Freezer Installed – 4/2021: **UPGRADE**
- Dishwasher
- (2) Ea. Refrigerator Pull Drawers - Under Counter
- (2) Ea. Freezer Pull Drawer
- Three burner stove
- Microwave/convection oven
- Cabinets for storage
- Wood floors
- Curved seating w/ Storage below
- Table w/ High Gloss Wood surface
- Stools under Bar Area/Galley Countertop
- Sink

Helm/Electronics

- **Yacht Controller: UPGRADE**
- Hydraulic Joystick Docking Stations: **UPGRADE**
- Pantograph Lower Helm Door (Starboard): **UPGRADE**
- Fusion Entertainment System Throughout: **UPGRADE**
- GOST Security System – (4) ea. Cameras – (3) ea. Fixed and (1) ea. Rotate/Tilt/Zoom: **UPGRADE**
- (4) Ea. Person Headset for 100% Communication During Docking: **UPGRADE**
- Raymarine GS165 - 2 Units Total: **UPGRADE**
- Raymarine i50 Depth Sounder: **UPGRADE**
- Raymarine Network Interface Cameras – Bilge and Cockpit: **UPGRADE**
- Raymarine Sirius Weather Module: **UPGRADE**
- Color Printer/Scanner w/ WiFi Extender: **UPGRADE**

- Raymarine Autopilot
- Bow & Stern Thruster Controls
- Alarms, High Water - Bilge & Cabin
- Compass
- Hailer Horn
- Graphic presentation of Analogue instruments
- Display of alarm status & fuel flow
- (2) Fuel Gauges

- Dual Stidd Helm Chairs
- Electronic Shift & Throttle Controls
- Power Steering w/ Tilt Wheel
- Wiper Controls

Lower Companionway

- Full Size Ariston Washer/Dryer: **UPGRADE**
- Stairs to Main Cabin

Master Stateroom

- Safe: **UPGRADE**
- Full Beam w/ Queen Berth
- Cedar Lined Closet
- Dresser (Port & Starboard)
- Entertainment Center
- 40" LED Flatscreen
- Blu-Ray Player
- (2) Nightstands
- Portlight, opening
- Vanity, pull-out w/ removable seat
- Private Access to Master Head

Master Head

- Private Access from Master Stateroom
- His & Her Sinks
- Vanity
- Tile Flooring
- Vacuflush Head
- Portlight, opening
- Shower w/ Seat, Adjustable Shower Wand, Rain Shower & Acrylic Door
- Medicine cabinet w/ Storage

VIP/Bow Stateroom

- DSS Receiver: **UPGRADE**

- Queen sized berth w/ Interspring Mattress and Storage Below
- Privacy Door to Head
- Entertainment Center
- 32" LED TV
- Blu-Ray Player
- Cedar lined hanging locker
- Skylight
- Drawers for storage

VIP/Bow Guest Head

- Vanity
- Tile Flooring
- Vacuflush Head
- Portlight, opening
- Shower w /seat, Adjustable Shower Wand, & Acrylic Door
- Medicine Cabinet w/ Storage

Port Stateroom

- Additional DSS Receiver: **UPGRADE**
- (2) Twin Berths w/ Pillows & Storage Below - Converts to Queen Size Berth
- Carpet Flooring
- Cedar lined hanging locker
- Storage Cabinet
- Storage Shelf
- LED TV w/ Blu-Ray Player

Starboard Stateroom

- Converted to Gym: **UPGRADE**
- Additional DSS Receiver: **UPGRADE**
- Exercise Equipment Included – Echelon EX3 Smart Bike, Bench, Weights: **UPGRADE**
- Cedar lined hanging locker
- Storage Cabinet
- Storage Shelf
- LED TV w/ Blu-Ray Player

Guest Head

- Vanity
- Tile flooring
- Vacuflush head
- Portlight, opening
- Shower w/ Seat, Adjustable Shower wand, & Acrylic door
- Medicine cabinet w/ storage

Engine Room

- Twin Caterpillar C18A Engines at 1150HP Each (with 714 Hours as of 4/2021): **UPGRADE**
- Onan 29kW Diesel Generator (with 1,208 Hours as of 4/2021): **UPGRADE**
- Dual SeaKeeper Gyro Stabilizers Systems: **UPGRADE**
- Spectra Compact Watermaker w/ 150 GPD – 12V: **UPGRADE**
- Additional Fuel Capacity to 1,150 Gals. Total: **UPGRADE**
- Headhunter Water Pump w/ Ultimate Water Flow and Pressure: **UPGRADE**
- Spare Propeller w/ Holders: **UPGRADE**
- Upgraded Air Conditioning and Heating System: **UPGRADE**
- Transformer Shore Power ISO Boost: **UPGRADE**
- Oil Changer System: **UPGRADE**
- Spare Parts and Tools – Lines, (4) Ea. Set Docking Wireless Communication, Eperb: **UPGRADE**
- Bow & Stern Thrusters
- Spur Line Cutters
- Bilge pumps 24V Automatic Highwater (1 Bilge, 1 Cabin)
- Fire suppression system - Automatic w/ Diesel Shutdown, Override & Manual Pull
- Insulation, Engine room - 2" w. Loaded Vinyl barrier
- Diesel fuel system - Electric w/Transfer pump
- Seacocks on all underwater fittings
- Hydraulic trim tabs
- Water heater, 240V, (20 gallon)

Exclusions

- Owner's Personal Items

Исключения

При продаже яхты исключаются личные вещи владельца.

Отказ от ответственности

Компания предоставляет описание судна или яхты добросовестно, но не может гарантировать точность этой информации, а также не ручается за техническое состояние. Покупатель должен проинструктировать своих агентов или оценщиков исследовать представленную информацию более подробно, по собственному желанию. Продажа судна или яхты, изменение цены или снятие с продажи будет происходить без предварительного уведомления.

ФОТОГРАФИИ

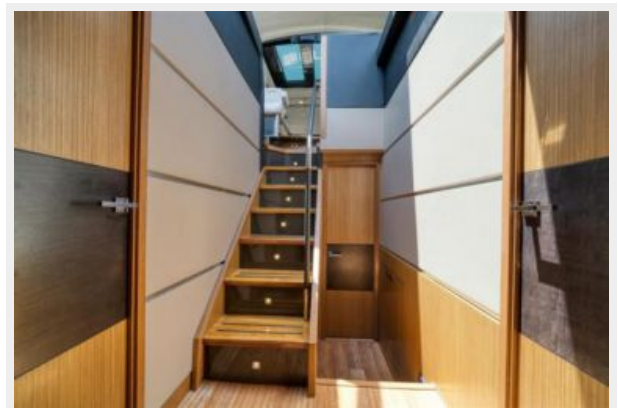
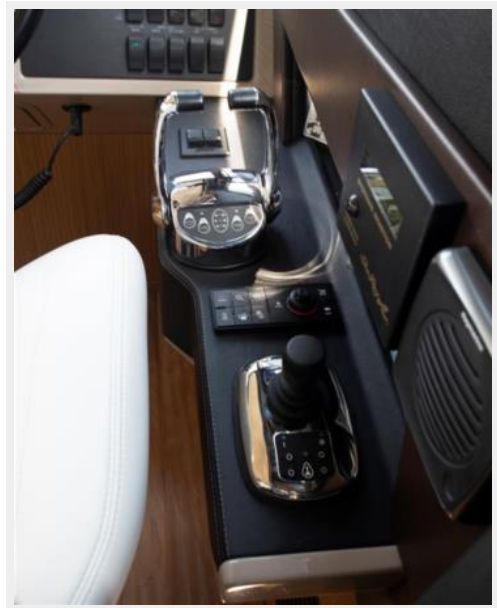


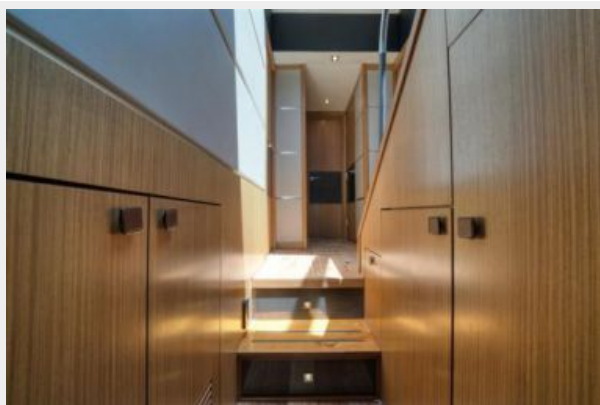






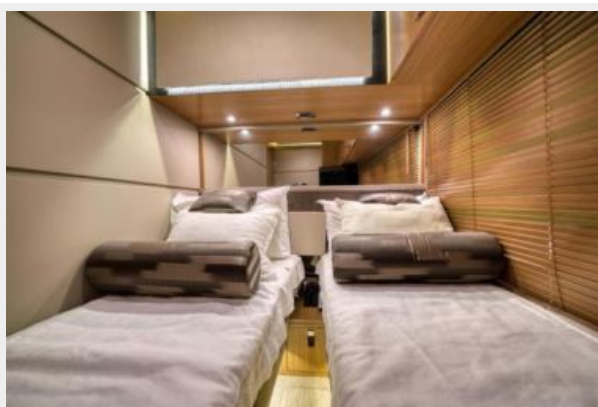
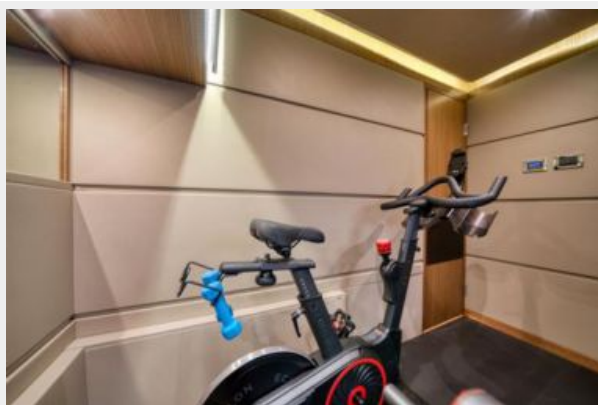
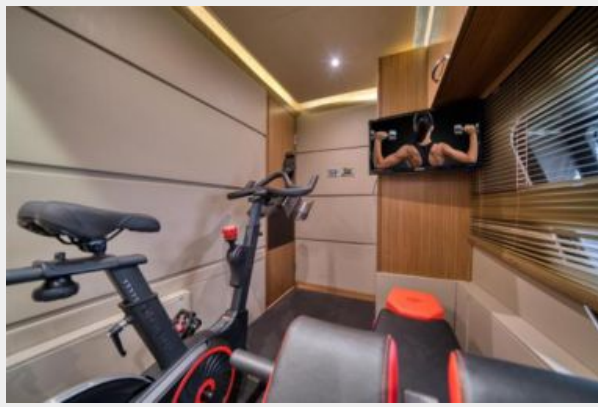




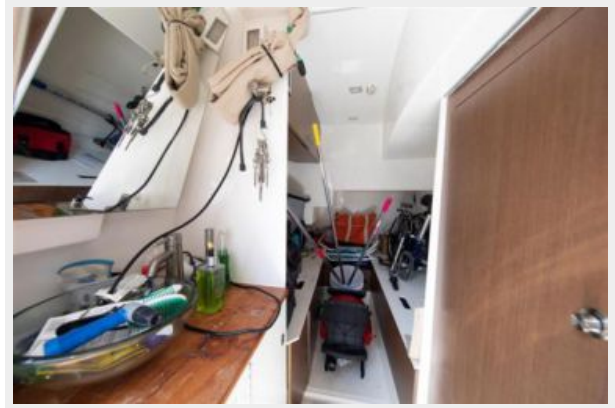














КОНТАКТЫ

Андрей Шестаков (Andrey Shestakov) – ведущий яхтенный брокер отдела продаж яхт и судов компании Shestakov Yacht Sales Inc. Официальный представитель Shestakov Yacht Sales Inc. для русскоговорящих клиентов в центральном офисе компании в Майами/Форт Лодердейл/Флорида/США.

Контактная информация

Email: andrey@shestakovyachtsales.com

Web: shestakovyachtsales.com

Телефоны

Краснодарский край: **+7(918)465-66-44**

США, Майами, Флорида: **+1(954)274-4435**

Время работы

Понедельник – Суббота: **9:00 - 21:00**
EDT

Воскресенье: **Закрето**

Адрес



Harbour Towne Marina, 850 NE 3rd St,
STE 213, Dania, FL 33004