

CREWS CONTROL — CHRIS CRAFT



Builder: CHRIS CRAFT

Year Built: 1986

Model: Motor Yacht

Price: PRICE ON APPLICATION

Location: United States

LOA: 48' 0" (14.63m)

Beam: 14' 9" (4.50m)

Max Draft: 3' 6" (1.07m)

Cruise Speed: 18 Kts. (21 MPH)

Max Speed: 22 Kts. (25 MPH)

Our experienced yacht broker, Andrey Shestakov, will help you choose and buy a yacht that best suits your needs **Crews Control — CHRIS CRAFT** from our catalogue. Presently, at Shestakov Yacht Sales Inc., we have a wide variety of yachts available on our sale's list. We also work in close contact with all the big yacht manufacturers from all over the world.

If you would like to buy a yacht **Crews Control — CHRIS CRAFT** or would like help answering any questions concerning purchasing, selling or chartering a yacht, please call **+1(954)274-4435**

TABLE OF CONTENTS

TABLE OF CONTENTS	2
SPECIFICATIONS	5
Overview	5
Basic Information	5
Dimensions	5
Speed, Capacities and Weight	5
Accommodations	6
Hull and Deck Information	6
Engine Information	6
DETAILED INFORMATION	7
MAIN DESCRIPTION	7
Tender	7
DISCLAIMER	7
Exclusions	7
Disclaimer	7
PHOTOS	8
1	8
2	8
3	8
4	8
5	8
6	8
7	9
8	9
9	9
10	9
11	9
12	9

13	10
14	10
15	10
16	10
17	10
18	10
19	11
20	11
21	11
22	11
23	11
24	11
25	12
26	12
27	12
28	12
29	12
30	12
31	13
32	13
33	13
34	13
35	13
36	13
37	14
38	14
39	14
40	14
41	14

42	14
43	15
44	15
45	15
46	15
47	15
48	15
49	16
50	16
51	16
52	16
53	16
54	16
55	17
56	17
57	17
58	17
59	17
60	17
CONTACTS	18
Contact details	18
Telephones	18
Office hours	18
Address	18

SPECIFICATIONS

Overview

CREWS CONTROL This Chris Craft 48 yacht fisherman is a American made well maintained cockpit Motoryacht. Ideal for a live aboard. She is a spacious and comfortable cruiser with all the amenities. The salon is roomy and well planned with her galley down and adjoining dinette full size refrigerator and microwave she has all the comforts of home. This two stateroom two head yacht makes her easy for guests and extended cruising. Master stateroom features tub/shower combo. Aft deck for entertaining & a large cockpit with walk through transom to board your dinghy. The davit system is unique and easy to operate. The flybridge has a wrap around sofa and two captains chairs. Powered by twin 454 CI Crusaders she can cruise at 15 knots and tops out at 20 knots. She is a very stable, dry comfortable ride.

Basic Information

Category: Motor Yacht

Sub Category: Aft Cabin

Model Year: 1986

Year Built: 1986

Country: United States

Fly Bridge: Yes

Dimensions

LOA: 48' 0" (14.63m)

Beam: 14' 9" (4.50m)

Max Draft: 3' 6" (1.07m)

Clearance: 12' 10" (3.91m)

Speed, Capacities and Weight

Cruise Speed: 18 Kts. (21 MPH)

Max Speed: 22 Kts. (25 MPH)

Water Capacity: 160 Gallons

Holding Tank: 40 Gallons

Fuel Capacity: 600 Gallons

Accommodations

Total Cabins: 2

Total Berths: 2

Total Heads: 2

Hull and Deck Information

Hull Material: Fiberglass

Engine Information

Engines: 2

Manufacturer: Crusader

Model: 454

Engine Type: Inboard

Fuel Type: Gas/Petrol

DETAILED INFORMATION

MAIN DESCRIPTION

CREWS CONTROL This Chris Craft 48 yacht fisherman is a American made well maintained cockpit Motoryacht. Ideal for a live aboard. She is a spacious and comfortable cruiser with all the amenities. The salon is roomy and well planned with her galley down and adjoining dinette full size refrigerator and microwave she has all the comforts of home. This two stateroom two head yacht makes her easy for guests and extended cruising. Master stateroom features tub/shower combo. Aft deck for entertaining & a large cockpit with walk through transom to board your dinghy. The davit system is unique and easy to operate. The flybridge has a wrap around sofa and two captains chairs. Powered by twin 454 CI Crusaders she can cruise at 15 knots and tops out at 20 knots. She is a very stable, dry comfortable ride.

Tender

This is a Zodiac Tender with a Mercury 5 hp outboard motor and fuel tank. Light weight and towable. Multiple seats and oar locks. Dinghy has handles and drain plug also lifting components for davit system.

DISCLAIMER

The Company offers the details of this vessel in good faith but cannot guarantee or warrant the accuracy of this information nor warrant the condition of the vessel. A buyer should instruct his agents, or his surveyors, to investigate such details as the buyer desires validated. This vessel is offered subject to prior sale, price change, or withdrawal without notice.

Exclusions

Owner's personal belongings.

Disclaimer

The Company offers the details of this vessel or yacht in good faith but cannot guarantee or warrant the accuracy of this information nor warrant the condition of the vessel. A buyer should instruct his representatives, agents, or his surveyors, to investigate such details as the buyer desires validated. This vessel or yacht is offered subject to prior sale, price change, or withdrawal without notice.

PHOTOS

1



2



3



4



5



6



7



8



9



10



11



12



13



14



15



16



17



18



19



20



21



22



23



24



25



26



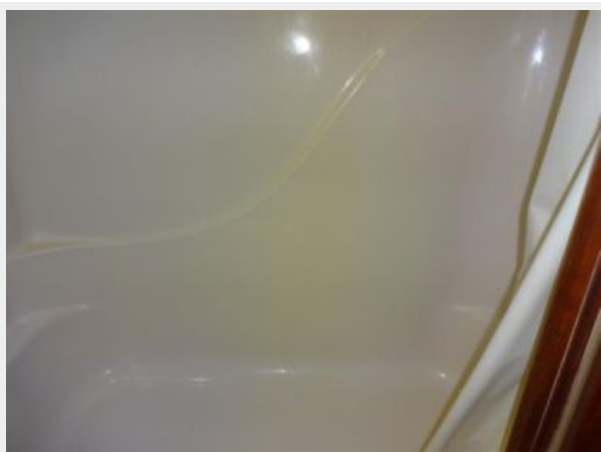
27



28



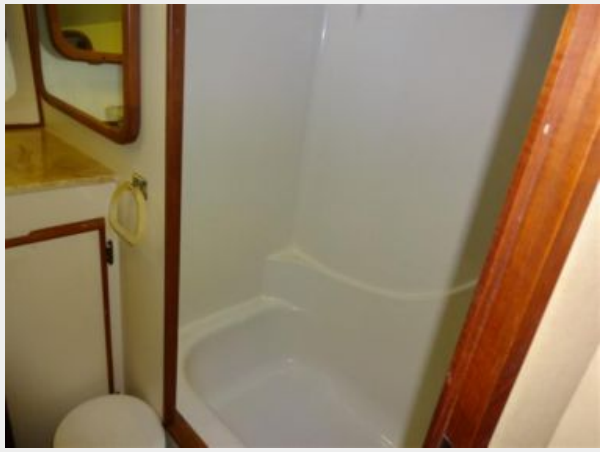
29



30



31



32



33



34



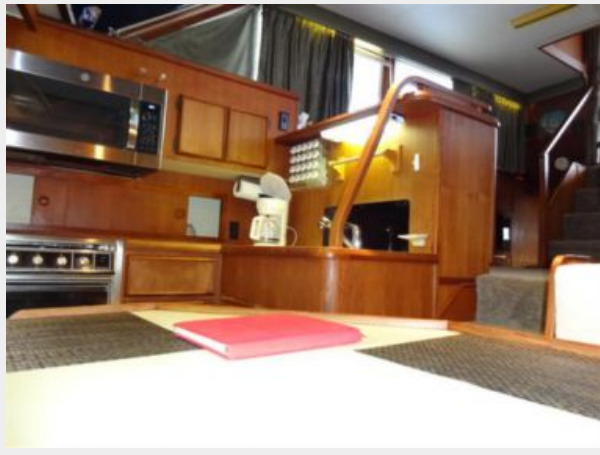
35



36



37



38



39



40



41



42



43



44



45



46



47



48



49



50



51



52



53



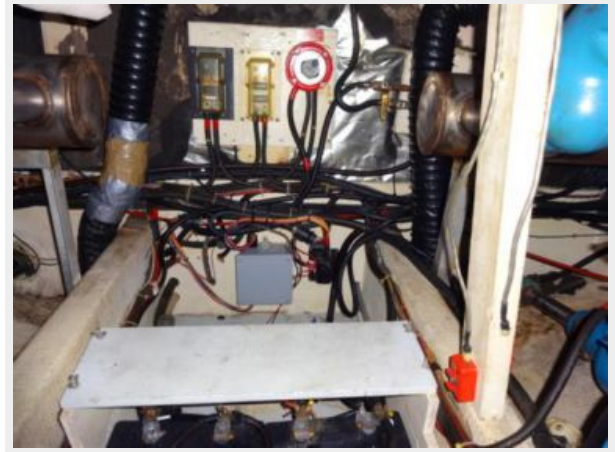
54



55



56



57



58



59



60



CONTACTS

Andrey Shestakov, leading yacht broker of the sales department of Shestakov Yacht Sales Inc. Shestakov Yacht Sales Inc., the official representative of the Miami/Fort Lauderdale FL headquarters.

Contact details

Email: andrey@shestakovyachtsales.com

Web: shestakovyachtsales.com/en/

Telephones

USA: +1(954)274-4435

Office hours

Monday – Saturday: **9:00 - 21:00** EDT

Sunday: **closed**

Address



Harbour Towne Marina, 850 NE 3rd St,
STE 213, Dania, FL 33004