

GLORY — JEANNEAU



Судостроитель: JEANNEAU

Год постройки: 1998

Модель: Крейсерская яхта

Цена: **ЦЕНА ЯХТЫ ПО ЗАПРОСУ**

Местонахождение: United States

Длина общая: 46' 5" (14.15m)

Ширина: 11' 8" (3.56m)

Макс. осадка: 6' 7" (2.01m)

Купить **Glory — JEANNEAU** а также выбрать подходящую вам яхту из нашего каталога яхт вам поможет опытный яхтенный брокер Андрей Шестаков. На сегодняшний день компания **Shestakov Yacht Sales Inc.** имеет большое количество яхт в собственном списке продаж, а также тесно сотрудничает со всеми крупными яхтенными производителями по всему миру.

Для того чтобы купить яхту **Glory — JEANNEAU** а также проконсультироваться по любому вопросу связанному с покупкой, продажей, чартером яхт позвоните по телефону **+7(918)465-66-44**.

ОГЛАВЛЕНИЕ

ОГЛАВЛЕНИЕ	2
ХАРАКТЕРИСТИКИ	6
Обзор	6
Основная информация	6
Размеры	6
Скорость, вместимость и масса	7
Размещение	7
Корпус и палуба	7
Информация о двигателе	7
ПОДРОБНОЕ ОПИСАНИЕ	8
Accommodations	8
Galley	8
Electrical	8
Electronics	9
Mechanical	9
Sails and Rigging	9
Deck and Cockpit	9
Safety	10
Additional	10
Исключения	11
Отказ от ответственности	11
ФОТОГРАФИИ	12
1	12
2	12
3	12
4	12
5	12
6	12

8	13
7	13
9	13
10	13
12	14
11	14
13	14
14	14
15	15
16	15
17	15
18	15
19	15
20	15
21	16
22	16
23	16
24	16
25	16
26	16
27	17
28	17
29	17
30	17
31	17
32	17
33	18
34	18
36	18

35	18
38	19
37	19
39	19
40	19
41	20
42	20
43	20
44	20
45	20
46	20
47	21
48	21
49	21
50	21
52	22
51	22
54	22
53	22
55	22
56	22
57	23
58	23
59	23
60	23
62	23
61	23
63	24
64	24

65	24
66	24
67	25
68	25
69	25
70	25
71	26
КОНТАКТЫ	27
Контактная информация	27
Телефоны	27
Время работы	27
Адрес	27

ХАРАКТЕРИСТИКИ

Обзор

Glory has been exceptionally well maintained. The Sun Odyssey 45.2 is a spacious, fast-sailing, classic Jeanneau design. She is solid under foot, has wide side decks, a large, convivial cockpit with twin helms and electric winches, a solid cockpit table, double transom door which leads to the swim platform making for easy 'on and off', and perch seats built into the stern rail on each quarter, all of which make this a fabulous cruising boat for a family.

The interior is warm and light with golden teak wood. The 3 cabin layout provides 2 large, double cabins aft, both of which have good storage. The master cabin is in the bow and is remarkably light and spacious with a queen berth which can be accessed from both sides. The chart table is tucked away so the navigator is out of the way of the rest of the crew. There is an enormous amount of seating in the salon, around the very solid teak table.

Glory's first owners took delivery of her in Europe and sailed her in the Mediterranean for many years before crossing to the Caribbean and then to the USA. The current owner has sailed largely on the Chesapeake Bay, with a trip to the USVI in 2010/11 and a trip to Maine in 2009.

Glory has the following equipment:

Yanmar 79 HP engine
Bowthruster
3-blade MaxProp
EPIRB
Anchor
Washdown
60lb CQR w/ 200 ft of chain
Electric Primary Winches (2)
Electric Secondary winch (1)
Aluminum toe rails
Simrad Autopilot
Raymarine Chartplotter
Xantrex 5000 Inverter
Inmast furling mainsail
Genoa
Gennaker
Trisail
Jib
Storm sail
 Don't miss out on Glory - she's ready for her next crew.

Основная информация

Тип судна: Крейсерская яхта

Модельный год: 1998

Год постройки: 1998

Страна: United States

Размеры

Длина общая: 46' 5" (14.15m)

Длина по ватерлинии: 38' 5" (11.71m)

Ширина: 11' 8" (3.56m)

Макс. осадка: 6' 7" (2.01m)

Трапы: 65' 0" (19.81m)

Скорость, вместимость и масса

Водоизмещение: 20570 Pounds

Вместимость воды: 99 Gallons

Объем топливного бака: 106 Gallons

Размещение

Всего кают: 3

Всего ком. состава: 2

Корпус и палуба

Материал корпуса: Fiberglass

Информация о двигателе

Двигатели: 1

Производитель: Yanmar

Модель: 4JH2-DTE

Тип двигателя: Inboard

Тип топлива: Diesel

ПОДРОБНОЕ ОПИСАНИЕ

Accommodations

This boat is well-kept, extremely spacious, light and welcoming.

There are two large, mirror-image aft cabins, with doors on either side of the companionway. Forward of the port cabin is the aft head, with shower, and on the starboard side is a large navigation station, the seat of which faces diagonally forward. The chart table provides a large work area with electrical and electronic equipment positioned on bulkheads & wrapped around it.

The salon is also to starboard and the U-shaped settee can sit 6 people comfortably around the dining table which has storage drawers below and has leaves that fold out increase the size of the table if entertaining a crowd. A straight settee amidships seats another 2 people and divides the galley from the salon. The well-equipped, longitudinal galley runs down the port side of the main salon and has generous storage, as stove, double sink & refrigeration. A bookshelf amidships, just behind the forward bulkhead, creates a short passageway into the forward cabin and serves as added storage for the galley/a drinks cabinet.

The master cabin is remarkably spacious, with a centrally positioned island double-berth, as well as a hanging locker and extensive storage cabinets, with shelves along the hull. The private head and shower are to starboard. Fixed portlights in the hull allow light into the cabin as does a large hatch which also provides ventilation.

Galley

- Longitudinal galley
- Frigoboat, keel cooled Refrigerator/Freezer (top loading)
- Eno 2-burner propane stove w/ oven
- Sharp Microwave oven
- Double S/S sink
- Pressurized hot and cold water
- Hand pump & foot pump
- Formica counter tops
- Storage above and below counter.
- 12V fan
- Trident Marine Propane shut off

Electrical

- 120V/12V system

- 1 X Shorepower inlet
- 1 x Shorepower cable
- 1 x Deka 12 V Start battery
- 3 x Rolls HHG 185 flooded lead-acid House batteries (555 A/H)
- 2 x 12V Bowthruster batteries (2019)

- 120V and 12V outlets throughout
- TrueCharge 40 A Battery Charger
- Xantrex 5000 Inverter
- Raritan 12 G water heater

Electronics

- Simrad AP 24 Autopilot
- Nexus Depth, Wind, Speed instruments
- Nexus GPS
- Raymarine L1250 Chartplotter
- ICOM M710 SSB
- ICOM M602 w/ RAM in cockpit
- JVC Stereo/CD changer/Radio

Mechanical

- Yanmar 4JH2-DTE - 79 HP engine
- 3776 Hours
- MaxProp 3-blade Folding prop
- 160A Alternator (rebuilt 10/10/20)
- Side Power Bowthruster

Sails and Rigging

- Quantum inmast furling Mainsail (13 yrs - good condition)
- Quantum 135% Genoa (12 yrs- good condition)
- Profurl Genoa furler
- The following sails are original and in good condition:GennakerTri-sailJibStorm sail
- Standing Rigging is original (forestay replaced 2010)
- Running rigging replaced as and when needed

Deck and Cockpit

- Double S/S bowroller

- S/S fairleads
- 60lb CQR w/ 200' chain
- Danforth-type secondary anchor w/ chain and rode
- Lofrans Electric Windlass
- Anchor washdown
- Anchor locker
- Deep Storage locker (accessed through foredeck hatch)
- Aluminum toe rails
- Teak handholds on coach roof
- Genoa tracks on edge of coachroof
- Traveller forward of dodger
- 2 x Harken 48 2-speed ELECTRIC primary winches
- 1 x Harken 44 2-speed ELECTRIC secondary winch
- 1 x Harken 44 2-speed manual secondary winch
- Dodger
- Large 3-bow Bimini with supporting struts
- Connector
- Covers for: cockpit table, wheels, chartplotter
- Cockpit table with leaves
- Aft end of cockpit table has pedestal for Chartplotter
- Twin helms w/ instruments at each helm
- Helm seats w/ storage lockers beneath
- Perch seats built into stern rails
- Double transom doors
- Swim Platform w/ swim ladder
- Transom shower

Safety

- EPIRB
- Lifesling
- Throw Rope
- 4 x Offshore PFD's
- 4 x inflatable PFD's with tethers
- Jack lines
- Electric bilge pump
- Mounted manual bilge pump
- Manual bilge pump w/ extension
- Wooden plugs for all through-hulls

Additional

- Caribe 8'6" Dinghy (elderly)
- 15HP Yamaha Enduro outboard motor

Исключения

При продаже яхты исключаются личные вещи владельца.

Отказ от ответственности

Компания предоставляет описание судна или яхты добросовестно, но не может гарантировать точность этой информации, а также не ручается за техническое состояние. Покупатель должен проинструктировать своих агентов или оценщиков исследовать представленную информацию более подробно, по собственному желанию. Продажа судна или яхты, изменение цены или снятие с продажи будет происходить без предварительного уведомления.

ФОТОГРАФИИ

1



2



3



4



5



6



7



8



9



10



11



12



13



14



15



16



17



18



19



20



21



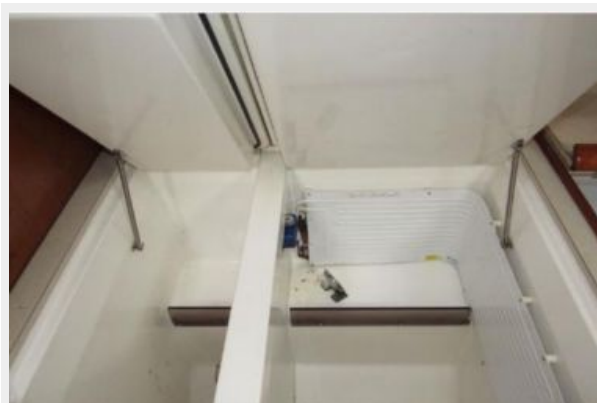
22



23



24



25



26



27



28



29



30



31



32



33



34



35



36



37



38



39



40



41



42



43



44



45



46



47



48



49



50



51



52



53



54



55



56



57



58



59



60



61



62



63



64



65



66



67



68



69



70



71



КОНТАКТЫ

Андрей Шестаков (Andrey Shestakov) – ведущий яхтенный брокер отдела продаж яхт и судов компании Shestakov Yacht Sales Inc. Официальный представитель Shestakov Yacht Sales Inc. для русскоговорящих клиентов в центральном офисе компании в Майами/Форт Лодердейл/Флорида/США.

Контактная информация

Email: andrey@shestakovyachtsales.com

Web: shestakovyachtsales.com

Телефоны

Краснодарский край: **+7(918)465-66-44**

США, Майами, Флорида: **+1(954)274-4435**

Время работы

Понедельник – Суббота: **9:00 - 21:00**
EDT

Воскресенье: **Закрыто**

Адрес



Harbour Towne Marina, 850 NE 3rd St,
STE 213, Dania, FL 33004