

## HALO — FEADSHIP



**Builder:** FEADSHIP

**Year Built:** 2015

**Model:** Motor Yacht

**Price:** PRICE ON APPLICATION

**Location:** Spain

**LOA:** 188' 7" (57.47m)

**Beam:** 34' 6" (10.50m)

**Max Draft:** 10' 8" (3.25m)

**Cruise Speed:** 12 Kts. (14 MPH)

**Max Speed:** 17 Kts. (20 MPH)

Our experienced yacht broker, Andrey Shestakov, will help you choose and buy a yacht that best suits your needs **HALO — FEADSHIP** from our catalogue. Presently, at Shestakov Yacht Sales Inc., we have a wide variety of yachts available on our sale's list. We also work in close contact with all the big yacht manufacturers from all over the world.

If you would like to buy a yacht **HALO — FEADSHIP** or would like help answering any questions concerning purchasing, selling or chartering a yacht, please call **+1(954)274-4435**

---

# TABLE OF CONTENTS

---

TABLE OF CONTENTS	2
SPECIFICATIONS	3
Basic Information	3
Dimensions	3
Speed, Capacities and Weight	3
Accommodations	3
Hull and Deck Information	4
Engine Information	4
DETAILED INFORMATION	5
DETAILED DESCRIPTION	5
Exclusions	14
Disclaimer	14
PHOTOS	15
CONTACTS	24
Contact details	24
Telephones	24
Office hours	24
Address	24

---

# SPECIFICATIONS

---

## Basic Information

---

**Category:** Motor Yacht

**Model Year:** 2015

**Year Built:** 2015

**Country:** Spain

## Dimensions

---

**LOA:** 188' 7" (57.47m)

**LWL:** 166' 7" (50.77m)

**Beam:** 34' 6" (10.50m)

**Max Draft:** 10' 8" (3.25m)

## Speed, Capacities and Weight

---

**Cruise Speed:** 12 Kts. (14 MPH)

**Cruise Speed Range:** 5275

**Max Speed:** 17 Kts. (20 MPH)

**Displacement:** 2116437.7152 Pounds

**Gross Tonnage:** 1001 Pounds

**Water Capacity:** 7417.95122016 Gallons

**Holding Tank:** 1051.40476696 Gallons

**Fuel Capacity:** 33214.35209796 Gallons

## Accommodations

---

**Total Cabins:** 6

**Sleeps:** 12

**Crew Cabin:** 8

**Crew Sleeps:** 15

---

## Hull and Deck Information

---

**Hull Material:** Steel

**Deck Material:** Teak

**Hull Configuration:** Full Displacement

**Hull Designer:** De Voogt Naval Architects,  
Netherlands

**Exterior Designer:** Harrison Eidsgaard  
Design

**Interior Designer:** Bernardi Peschard

---

## Engine Information

---

**Engines:** 2

**Manufacturer:** MTU

**Model:** 12V4000M63

**Fuel Type:** Diesel

# DETAILED INFORMATION

## DETAILED DESCRIPTION

```
#edmiston-espec { font-family: 'Helvetica Neue LT Std', 'Sans'; font-weight: 200; font-style:
normal; text-align: justify; text-justify: inter-word; line-height: 1.5em; color: #444; } #edmiston-
espec table { border-spacing: 0px; border-collapse: collapse; } #edmiston-espec td { text-align:
left; vertical-align: top; padding: 0px; margin: 0px; line-height: 1.5em; } #edmiston-espec th { text-
align: left; vertical-align: top; padding: 0px; margin: 0px; width: 5cm; } #edmiston-espec h1 { font-
family: 'Times New Roman','Serif'; color: #DB001E; } #edmiston-espec h2 { font-family: 'Times
New Roman','Serif'; color: #DB001E; } #edmiston-espec h3 { font-family: 'Times New
Roman','Serif'; color: #222; } #edmiston-espec ul { list-style: none; margin: 0; padding: 0 0 0 20px;
} #edmiston-espec li.bullet { list-style: disc; }
```

### 1. MAIN CHARACTERISTICS

<b>TYPE</b>	◦ Displacement Motor Yacht
<b>HULL NO</b>	◦ BN 810
<b>BUILDER</b>	◦ Feadship, Royal Van Lent, Netherlands
<b>NAVAL ARCHITECT</b>	◦ De Voogt Naval Architects, Netherlands
<b>EXTERIOR DESIGN</b>	◦ Harrison Eidsgaard Design
<b>INTERIOR DESIGN</b>	◦ Bernardi Peschard
<b>YEAR</b>	◦ 2015
<b>IMO</b>	◦ 1012775
<b>CONSTRUCTION</b>	◦ Steel Hull, Aluminium Alloy Superstructure, Teak decks
<b>CLASSIFICATION</b>	◦ Lloyds + 100A1 SSC Yacht, Mono, G6 + LMC, UMC
<b>CREW</b>	◦ 15
<b>FLAG</b>	◦ Cayman Islands
<b>ENGINES</b>	◦ 2 x 1,500kW MTU Diesel 12V 4000M63 @ 1,800rpm
<b>GT</b>	◦ 1,001 reg. tons
<b>NT</b>	◦ 300 reg. tons
<b>DISPLACEMENT</b>	◦ 960 metric tons

### 2. DIMENSIONS

<b>LOA</b>	◦ 57.45m / 188'6"
<b>LWL</b>	◦ 50.77m / 166'7"
<b>BEAM</b>	◦ 10.50m / 34'5"
<b>DRAFT</b>	◦ 3.25m / 10'8" (full load)

### 3. SPEED & RANGE UNDER POWER

<b>MAXIMUM SPEED</b>	◦ 16.8 knots
<b>CRUISING SPEED</b>	◦ 12 knots

- FUEL CONSUMPTION**
  - 240 ltr/hr @ 12 knots
  - 400 ltr/hr @ 14 knots
  - 650 ltr/hr @ 16 knots
- RANGE**
  - 5,275nm @ 12 knots

#### 4. CAPACITIES

- ACCOMMODATION**
  - 12 x guests in 6 cabins
- CREW**
  - 15 x Crew & Staff in 8 cabins
- FUEL**
  - 125,730 litres / 33,214 US gallons
- FRESH WATER**
  - 28,080 litres / 7,418 US gallons
- HOLDING TANK**
  - 3,980 litres / 1,051 US gallons
- LUBE OIL**
  - 2,940 litres / 777 US gallons
- DIRTY OIL**
  - 3,400 litres / 898 US gallons
- GREY WATER**
  - 11,030 litres / 2,914 US gallons
- BLACK WATER**
  - 11,060 litres / 2,922 US gallons

#### 5. ACCOMMODATION

- MASTER SUITE**
  - 1 x Master Suite on Main Deck, his & her en suite shower room / dressing rooms
- GUESTS**
  - 1 x Double VIP Guest cabin on Bridge Deck, en suite shower room
  - 4 x Double or Twin Guest cabin on Main Deck, en suite shower room
  - Up to 15 x crew & staff in 8 cabins
- CREW**
  - 1 x Captain's cabin
  - 3 x Officer cabins
  - 4 x Crew cabins

#### 6. MECHANICAL EQUIPMENT

- ENGINES**
  - 2 x 1,500kW / 2,040Hp MTU Diesel 12V4000M63 @ 1,800rpm
- ENGINE HOURS**
  - ± 6,500 hours March 2021
- GEARBOX**
  - Reinjtes WAF 763 (4.625:1)
- PROPELLERS**
  - 2 x SIP Marina 5-blade Outrunning Fixed Pitch Dia.1,700mm
  - (further 2 x spare propellers in storage)
- RUDDER ANGLE**
  - Max 35°
- STEERING SYSTEM**
  - De Waal / De Keizer steering control
- STABILISERS**
  - Naiad Zero Speed 720
- BOW THRUSTER**
  - Jatstram BU 20F 120kW / 163Hp @ 1,480rpm
- STERN THRUSTER**
  - Voith Inline Thruster 380-50, 50kW @ 1,200rpm
- GENERATORS**
  - 2 x Caterpillar C9 215kW / 290Hp @ 1,500rpm
  - HUG Engineering BCN250 exhaust cleaners
- GENERATOR HOURS**
  - ± 13,500 hours March 2021

**EMERGENCY  
GENERATOR  
ELECTRICITY**

- 1 x Perkins 6TWGM 120kW / 163Hp 1,500rpm
- 400V 50Hz

**SHORE POWER**

- ASEA AC100V3 Master - Slave Units

**FIRE & BILGE PUMPS**

- 2 x Johnson / Stork FRES50-205 G2MQ1
- 1 x Johnson / Stork FRES50-205 G2MQ1 Emergency

**AIR CONDITIONING**

- Heinen & Hopman air handlers & fan coil based

**HOT WATER BOILERS**

- 2 x NIBE EKS 500
- HEM 30DPLX Series Reverse Osmosis, Desalination systems

**WATER MAKER**

- 2 x 10,000 litres / 2,642 US gallons per day

**TOILET SYSTEM**

- QuaVac Vacuum

**SEWAGE SYSTEM**

- Hamann HL-Cont PLUS 05

**BILGE SEPARATOR**

- DVZ-FZU-Oilchief

**FUEL CENTRIFUGE**

- Separ 2000

**FUEL SEPARATOR**

- GEA Westfalia W22-IE2-BG-80.2

**7. NAVIGATION EQUIPMENT**

**MAGNETIC COMPASS**

- Sperry Jupiter

**GYRO COMPASS**

- Sperry NavigatX mk1

**AUTOMATIC PILOT**

- Sperry NAVIPILOT 4000

**ECHO SOUNDER**

- Furuno FE-700

**RADAR**

- S Band – Furuno FAR-2137S
- X Band – Furuno FAR-2117

**NAVIGATION DISPLAYS**

- 7 x Hatteland HD 24T21 MMD – MA4-FOGA

**AIS**

- Saab R5 Supreme AIS

**DGPS**

- 2 x Saab R5 Supreme

**CHART PLOTTER**

- ECDIS approved installation
- 2 x Transas NS-400

**NAVTEX**

- Furuno NX-700A

**WEATHER FAX**

- Inmarsat C, Sailor TT-6006A

**LOG**

- Furuno Doppler DS-80

**WIND INSTRUMENTS**

- Viasala Weather Transmitter WXT520

**SEARCHLIGHT**

- ACR RCL-600A

**8. COMMUNICATION EQUIPMENT**

**SATCOM**

- Seatel 4012 VSAT Radome
- 2 x EPIRB Sailor SGE406-II Auto
- 2 x Sailor SART II
- Inmarsat C, Sailor TT-6006A

- VHF**
  - GMDSS A-3 compliant installation
  - Sailor 6222 DSC
  - Furuno FM-8900S with crew mess repeater
  - 2 x Portable Emergency VHF Sailor SP3520
- SSB**
  - Sailor 6300 MF/HF
- FLEET SAT**
  - Thrane Cobham Sailor TT-3672A
  - 14 x Motorola SL 4000e
- UHF**
  - 6 x Motorola DP3661e
  - Motorola DR3000 Gateway repeater
  - Phonetech CIS3100 Command Intercom
- INTERCOM**
  - Bridge > < Steering Room
  - Bridge > < Engine Room
  - Bridge > < Fwd Mooring Deck

## 9. DECK EQUIPMENT

- ANCHOR WINDLASSES**
  - 2 x Muir VRC 15000 Planetary Drive Vertical
- AFT WARPING CAPSTANS**
  - 2 x Muir VC15000 Vertical
- ANCHORS**
  - 2 x Prohand SEC Pool 495kg
- ANCHOR CHAINS**
  - 2 x 7-Shackles 22mm U@ Stud Link
- BOAT CRANE & DAVITS**
  - Rescue Boat: Van Driel Knuckle Boom SWL 950kg
  - Tenders: Van Driel Overhead Davit SWL 2,500kg
  - Waverunner hoist: SWL 750kg
- PASSERELLE**
  - Akerboom Hydraulic, custom
- SIDE BOARDING LADDER**
  - Akerboom Hydraulic, custom
- POOL / JACUZZI**
  - 4 Seasons Spa, 12kW heater, whirlpool
- SWIMMING PLATFORM**
  - Akerboom Hydraulic - custom
- AWNINGS**
  - Bridge deck: De Vries Sails Sun Awning
  - Sun deck: Akerboom custom retractable awning
  - 2 x TUUCI Cantilever Parasol
- DECK FURNITURE**
  - De Vries Sails

## 10. ENTERTAINMENT EQUIPMENT

- SHIPWIDE**
  - VBHI Airplay Manager to stream mobile devices, content anywhere on board
  - 2 x Seatel 5004 European Quad TVRO Radome
  - 4 x Sonance VP65R Speakers
- FORWARD SUNDECK**
  - Monitor Audio IWS-10 Subwoofer
  - 2 x Sonance Launchport with Apple iPad 16GB for Crestron lighting & audio controls
  - Plex Media Library supported by Apple TV4
  - Vutec Lectric III 110" Projection Screen
  - JVC DLA-RS66E Projector



- AFT SUNDECK**
  - 5 x Sonance VP65R Speakers
  - Monitor Audio IWS-10 Subwoofer
  - Apple iMac 21.5"
  - 2 x Sonance VP66R Speakers
- WHEELHOUSE**
  - Sonance Launch port with Apple iPad 16GB for Crestron room controls
  - Plex Media Library supported by Apple TV4
  - Cisco CP-7975G VoIP Phone
  - Cisco CP-7925G VoIP Phone
  - Samsung 40" Full HD Display
  - 2 x Sonance VP66R Speakers
- BRIDGE DECK VIP CABIN**
  - Sonance Launchport with Apple iPad 16GB for Crestron room controls
  - Plex Media Library supported by Apple TV4
  - Cisco CP-7925G VoIP Phone
  - Apple iMac 27"
  - Samsung 40" Full HD Display
  - 2 x Sonance VP66R Speakers
- CAPTAIN'S CABIN**
  - Sonance Launchport with Apple iPad 16GB for Crestron room controls
  - Plex Media Library supported by Apple TV4
  - Cisco CP-7925G VoIP Phone
- BRIDGE DECK PANTRY**
  - 2 x Sonance VP66R Speakers
  - Cisco CP-7821-K9 VoIP Phone
  - Vutec Retractable-VU PRO 110" Projection Screen
  - JVC DLA-X900RBE DLP Projector
  - Samsung 75" Full HD Display
- BRIDGE DECK SALON**
  - 8 x Sonance VP66R Speakers
  - Sunfire HRS10 Subwoofer
  - 2 x Sonance Launchport with Apple iPad 16GB for Crestron lighting & audio controls
  - Plex Media Library supported by Apple TV4
  - Cisco CP-7925G VoIP Phone
- AFT BRIDGE DECK**
  - 4 x Sonance VP66R Speakers
  - Samsung 48" Full HD Display
  - 5 x Sonance VP66R Speakers
  - Sunfire HRS10 Subwoofer
- MAIN DECK OWNER'S SUITE**
  - Sonance Launchport with Apple iPad 16GB for Crestron room controls
  - Plex Media Library supported by Apple TV4
  - Cisco CP-7925G VoIP Phone

<b>OWNER'S BATHROOM PS OWNER'S BATHROOM SB</b>	<ul style="list-style-type: none"> <li>○ 2 x Sonance VP66R Speakers</li> <li>○ 2 x Sonance VP66R Speakers</li> </ul>
<b>OWNER'S STUDY</b>	<ul style="list-style-type: none"> <li>○ Samsung 32" Full HD Display</li> <li>○ 2 x Sonance VP66R Speakers</li> <li>○ Sonance Launchport with Apple iPad 16GB for Crestron room controls</li> <li>○ Plex Media Library supported by Apple TV4</li> <li>○ Cisco CP-7925G VoIP Phone</li> </ul>
<b>GYM</b>	<ul style="list-style-type: none"> <li>○ Samsung 40" Full HD Display</li> <li>○ 2 x Sonance VP66R Speakers</li> <li>○ Sonance Launchport with Apple iPad 16GB for Crestron room controls</li> <li>○ Plex Media Library supported by Apple TV4</li> <li>○ Cisco CP-7925G VoIP Phone</li> </ul>
<b>GUEST CABINS (x 4)</b>	<ul style="list-style-type: none"> <li>○ Samsung 48" Full HD Display</li> <li>○ 2 x Sonance VP66R Speakers</li> <li>○ Sonance Launchport with Apple iPad 16GB for Crestron room controls</li> <li>○ Plex Media Library supported by Apple TV4</li> <li>○ Cisco CP-7925G VoIP Phone</li> </ul>
<b>MAIN DECK PANTRY</b>	<ul style="list-style-type: none"> <li>○ 2 x Sonance VP66R Speakers</li> <li>○ Cisco CP-7821-K9 VoIP Phone</li> </ul>
<b>MAIN DECK SALON</b>	<ul style="list-style-type: none"> <li>○ 4 x Sonance VP66R Speakers</li> <li>○ Sunfire HRS10 Subwoofer</li> <li>○ Sonance Launch port with Apple iPad 16GB for Crestron lighting &amp; audio controls</li> <li>○ Cisco CP-7925G VoIP Phone</li> </ul>
<b>AFT MAIN DECK</b>	<ul style="list-style-type: none"> <li>○ 4 x Monitor Audio CT280 Speaker</li> <li>○ Sonance Launchport with Apple iPad 16GB for Crestron lighting &amp; audio controls</li> </ul>
<b>CREW CABINS (x 5)</b>	<ul style="list-style-type: none"> <li>○ Samsung 22" Full HD Display</li> <li>○ Samsung 19" Full HD Display</li> <li>○ 2 x Sonance Launch port with 2 x Apple iPad Mini for Crestron room controls</li> <li>○ Plex Media Library supported by Apple TV4</li> <li>○ Cisco CP7925G VoIP Phone</li> </ul>
<b>OFFICER'S CABINS (x 2)</b>	<ul style="list-style-type: none"> <li>○ Samsung 22" Full HD Display</li> <li>○ Sonance Launchport with Apple iPad Mini for Crestron room controls</li> </ul>

**LAUNDRY**

- Plex Media Library supported by Apple TV4
- Cisco CP7925G VoIP Phone
- Samsung 32" Full HD Display
- 2 x Sonance VP66R Speakers
- Sonance Launchport with Apple iPad 16GB for Crestron room controls
- Plex Media Library supported by Apple TV4
- Cisco CP7821-K9 VoIP Phone

**CREW MESS**

- Samsung 40" Full HD Display
- 2 x Sonance VP66R Speakers
- Sonance Launchport with Apple iPad 16GB for Crestron room controls
- Plex Media Library supported by Apple TV4
- Cisco CP-7975G VoIP Phone

**GALLEY**

- 2 x Sonance VP66R Speakers
- Cisco CP7821-K9 VoIP Phone

**ENGINE CONTROL ROOM**

- Apple iMac 21.5"
- 2 x Sonance VP66R Speaker
- Sonance Launchport with Apple iPad 16GB for Crestron room controls
- Plex Media Library supported by Apple TV4
- Cisco CP-7975G VoIP Phone

**ENGINE ROOM**

- 2 x B&W AM1 Speakers

**DIVE STORE**

- 2 x Sonance VP66R Speakers
- Cisco CP-7925G-E VoIP Phone

**11. GALLEY & LAUNDRY EQUIPMENT****GALLEY**

- 2 x Gaggenau EB388110 Ovens
- Hobart FXA pot washer
- Miele PG8056 dish washer
- Electrolux Prostore PS04R1F 470 litre fridge
- Miele M 6260 microwave oven
- Hansdampf Junior combi Steamer
- MKN Infa 1 salamander
- MKN Supra grill
- MKN induction range 1x4 zone 1x2 zone
- Smitsair extraction hood

**LAUNDRY**

- Miele HM 16-83 steam roller ironer
- 2 x Miele PWT 6089 Vario LP 8kg washer
- 2 x Miele PT 189 EL ED RVS 8kg dryer
- Miele PW 6137 EL RVS 13kg washer
- Miele PT8333 EL ED RVS 13kg dryer

**CREW MESS**

- Sitrovap steam iron
- Miele M6260 microwave oven
- Miele PG8056 dish washer
- Electrolux Prostore PS06R1F 720 litre fridge
- Water Logic WL4 mini water dispenser
- Jura Webchrome WE8 coffee machine

**LOWER DECK CREW PASSAGE**

- Euro Cave E-283 Classic wine fridge
- Euro Cave S-283 Classic wine fridge

**LOWER DECK DIVE STORE**

- Miele PW6065 6.5kg washer
- Miele PT5137 WP 6.5 kg dryer

**MAIN DECK PANTRY**

- Miele PG8056 dish washer
- Miele K9122Ui fridge
- Nespresso CS 220 Pro coffee machine
- Hoshizaki IM-30CNE ice cube maker
- Miele M 6260 microwave oven

**MAIN DECK AFT BAR**

- 2 x Sub Zero ICBID-30RP fridge drawer
- Electrolux Prostore PS04R1F 470 litre fridge
- Nespresso CS 220 Pro coffee machine

**BRIDGE DECK PANTRY**

- Hoshizaki IM-30CNE ice cube maker
- 2 x Miele PG8056 dish washer
- Miele M 6260 microwave oven

**SUN DECK FWD BAR**

- Miele K9123Ui fridge drawer
- Hoshizaki IM-30CNE ice cube maker
- Hoshizaki IM-45CNE ice cube maker

**12. SECURITY & SAFETY EQUIPMENT****SAFETY**

- Phillips Heartstart FRX defibrillator
- Tempus IC patient monitoring
- Oxygen maker and filling bump station
- 3 x Medical Oxygen kits
- 28 x Challenger Interlock 275N adult lifejackets
- 4 x Challenger child lifejacket
- 27 x Uninsulated immersion suits – adult
- 4 x Insulated immersion suits – child
- 4 x 25-pax RFD Surviva life rafts
- 1 x 8-pax RFD Surviva life raft

**SECURITY**

- Panasonic CCTV system with WJ-HD716 4TB hard drive recorder
- 5 x PTZ & 1 x Fixed camera positions
- Fingerprint recognition entry with 3 x readers on entrance doors
- 2 x Garrett Security Search wands
- Marioff Hi-Fog Water Mist System

## **FIRE FIGHTING**

- 4 x Drager PSS7000 SCBA set with Drager FPS7000 face Masks, Drager C-C440 Push to talk
- 8 x Drager 6.8 litre Composite BA Cylinder
- 1 x Diktron BA Control Board – 6 person
- 4 x Gallet Fire Helmets
- 4 x Motorola DP4401 UHF Atex Radios
- 4 x FPS-COM Plus Voice Communication
- 4 x Bristol Fire Suits incl/ kit bag, jacket, trousers, flash hood, gloves, boots, fire axe, belt, safety line, torch
- 15 x Drager Parat 5530 smoke hood
- 7 x Ocenco EEBD
- 21 x Fire extinguishers; 15 x Foam 9ltr, 5 x CO2 5kg, 1 x Foam 50ltr

## **13. TENDERS & WATERSPORTS EQUIPMENT**

### **TENDERS**

- 2 x Compass custom 7.50m D-Rib Tenders with Yanmar 6BY3-260Z-ZT 6\_cylinder 260hp engine, Yanmar ZT370 duoprop stern drive, Side-Power SE40/120S bow thruster
- 1 x DSB 420 IRB 24 4.20m Rescue Boat with Yamaha 25Hp outboard engine

### **WATERSPORTS**

- 2 x Seadoo Spark 90Hp Waverunner
- 2 x Yamaha Superjet Jetski
- 2 x Seabob F5S
- 4 x Malibu Two Tandem Sea Kayak
- 2 x Frenzy Single Sea Kayak
- 2 x Sevylor Tandem Inflatable Kayak
- 3 x Cabrinha Switchblade Kite – 7, 12 & 15 metre
- 2 x Naish Nalu Inflatable SUP
- Jobe Maddox 138 Wakeboard
- Jobe Vanity 136 Wakeboard
- Jobe Jinx Junior Wakeboard
- Jobe Onia Board
- Jobe Hemi Combo Skis (pair)
- Jobe Progress Slalom Ski (single)
- Jobe Hemi Trainer Skis (pair)
- Jobe Chilli-pepper Kneeboard
- Jobe Exceed Wakeskate
- Custom Carbon 6ix Foil Board
- 3 x Jobe heavy Duty Hotseat (1-rider)
- Jobe Play (1-rider)
- 2 x Jobe Lunar (3-rider)
- Airhead Hot Dog (3-rider)
- 2 x Deep Sea Fishing Rods and Gear

### **DIVING**

- Brownies Nitrox Maker custom installation with Bauer compressor
- 4 x HP Nitrox storage for deluge filling

**SHORE TOYS**

- 12 x Dive equipment
- 4 x Go-Ped Electric Scooters
- 2 x Evolve Electric Skateboard

**GYM  
EQUIPMENT**

- Techno Gym cross trainer
- Concept 2 rowing machine
- Troy free weight system with Finnlo bench

**14. KEY FEATURES**

- Feadship excellence through and through
- Striking Harrison Eidsgaard exterior
- Contemporary Bernardi Peschard interior
- Large custom Compass tenders
- Large selection of watertoys including a full dive set-up
- Great sundeck of over 200+sqm with an oversized custom jacuzzi, bar, dining, exterior cinema
- 12 guests in 6 cabins (all on main deck with VIP on bridge deck)
- Dedicated owners office
- Gym on main deck
- Touch-and-go helipad on the bow
- Recently completed Euro 4.5m yard period including full paint, 5-year survey, 5-year service interval on major systems, various other engineering and maintenance works to set the yacht up for the next five years
- Build supervised and ongoing management by Edmiston

Art is not included in the sale.

---

**Exclusions**

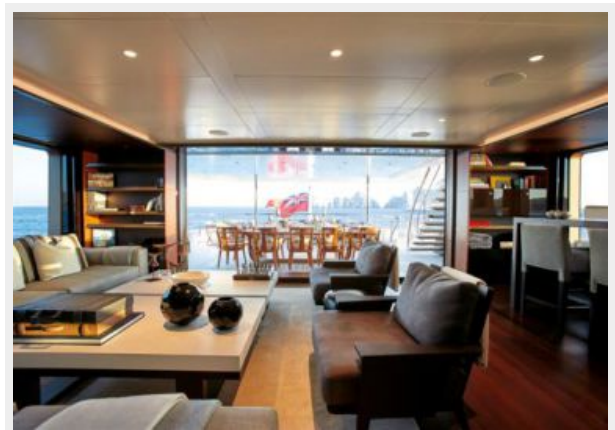
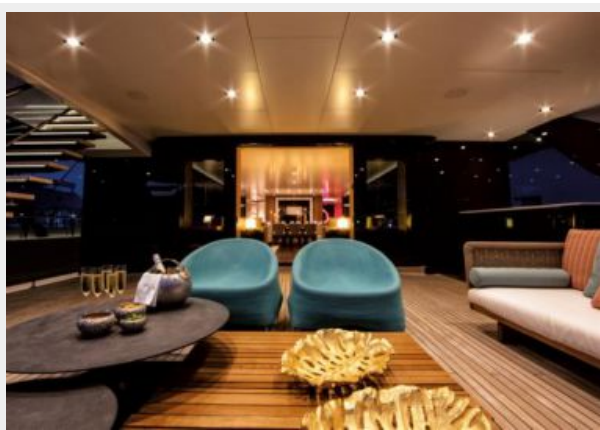
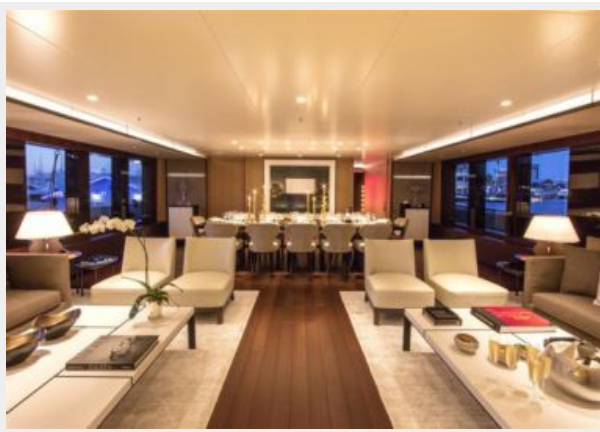
Owner's personal belongings.

---

**Disclaimer**

The Company offers the details of this vessel or yacht in good faith but cannot guarantee or warrant the accuracy of this information nor warrant the condition of the vessel. A buyer should instruct his representatives, agents, or his surveyors, to investigate such details as the buyer desires validated. This vessel or yacht is offered subject to prior sale, price change, or withdrawal without notice.

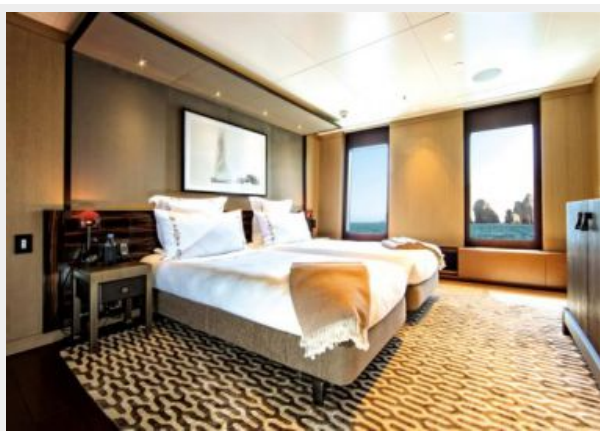
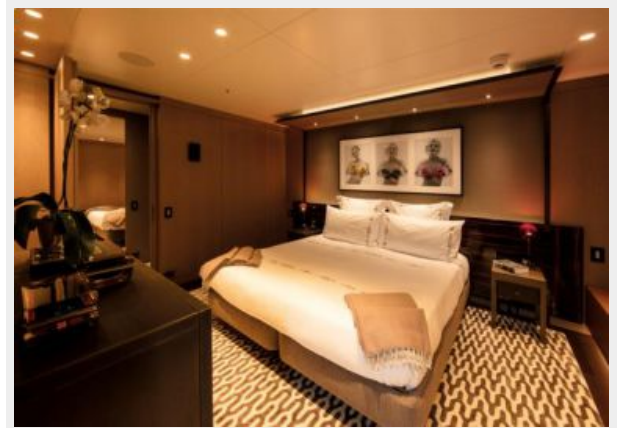
# PHOTOS

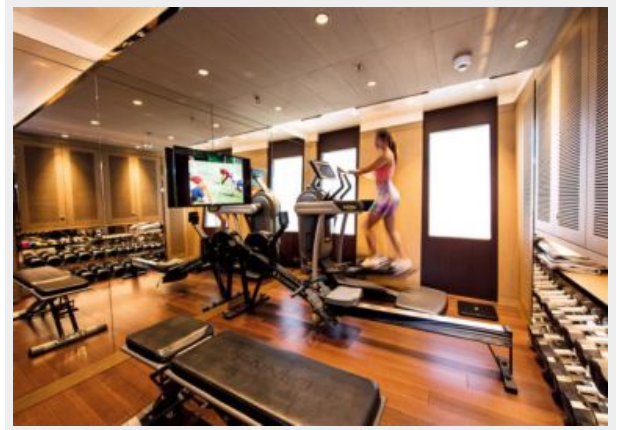














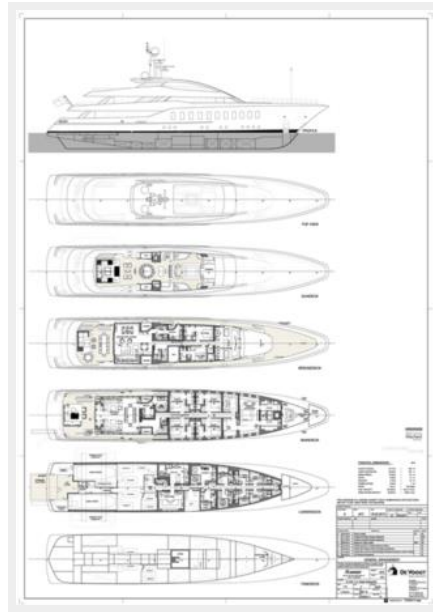












# CONTACTS

---

Andrey Shestakov, leading yacht broker of the sales department of Shestakov Yacht Sales Inc. Shestakov Yacht Sales Inc., the official representative of the Miami/Fort Lauderdale FL headquarters.

## Contact details

---

Email: [andrey@shestakovyachtsales.com](mailto:andrey@shestakovyachtsales.com)

Web: [shestakovyachtsales.com/en/](http://shestakovyachtsales.com/en/)

## Telephones

---

USA: +1(954)274-4435

## Office hours

---

Monday – Saturday: **9:00 - 21:00** EDT

Sunday: **closed**

## Address

---



Harbour Towne Marina, 850 NE 3rd St,  
STE 213, Dania, FL 33004