

REEL HAWK — HATTERAS



Builder: HATTERAS

Year Built: 2008

Model: Sport Yacht

Price: PRICE ON APPLICATION

Location: United States

LOA: 68' 0" (20.73m)

Beam: 21' 7" (6.58m)

Max Draft: 5' 4" (1.63m)

Max Speed: 30 Kts. (35 MPH)

Our experienced yacht broker, Andrey Shestakov, will help you choose and buy a yacht that best suits your needs **REEL HAWK — HATTERAS** from our catalogue. Presently, at Shestakov Yacht Sales Inc., we have a wide variety of yachts available on our sale's list. We also work in close contact with all the big yacht manufacturers from all over the world.

If you would like to buy a yacht **REEL HAWK — HATTERAS** or would like help answering any questions concerning purchasing, selling or chartering a yacht, please call **+1(954)274-4435**

TABLE OF CONTENTS

TABLE OF CONTENTS	2
SPECIFICATIONS	6
Overview	6
Basic Information	6
Dimensions	6
Speed, Capacities and Weight	6
Accommodations	6
Hull and Deck Information	7
Engine Information	7
DETAILED INFORMATION	8
Upgrades By Current Owner	8
Manufacturer Provided Description	10
Standard Features	11
Exclusions	17
Disclaimer	17
PHOTOS	18
2	18
3	18
4	18
5	18
6	19
7	19
8	19
9	19
10	19
11	19
12	20
13	20

14	20
15	20
16	20
17	20
18	21
19	21
21	21
20	21
22	22
23	22
24	22
25	22
27	22
26	22
29	23
28	23
30	23
31	23
32	24
33	24
34	24
35	24
37	25
36	25
38	25
39	25
41	26
40	26
43	26

42	26
44	27
45	27
46	27
47	27
48	27
49	27
50	28
51	28
52	28
53	28
55	28
54	28
56	29
57	29
58	29
59	29
61	29
60	29
62	30
63	30
64	30
65	30
66	30
67	30
68	31
CONTACTS	32
Contact details	32
Telephones	32

Office hours	32
Address	32

SPECIFICATIONS

Overview

Seakeeper Gyro Stabilization added in 2019! Major Refit in March 2019! Open Bridge with Full Tower Loaded Out with Upgrades and Ready for Action Incredible List of Updates and Kept in Excellent Condition Not Fished until 2019, Kept in Maine and Stored Seasonally Until 2018, Only 2 Owners

Basic Information

Category: Sport Yacht

Sub Category: Convertible

Model Year: 2008

Year Built: 2008

Country: United States

Dimensions

LOA: 68' 0" (20.73m)

Beam: 21' 7" (6.58m)

Max Draft: 5' 4" (1.63m)

Clearance: 15' 1" (4.60m)

Speed, Capacities and Weight

Max Speed: 30 Kts. (35 MPH)

Displacement: 140000 Pounds

Water Capacity: 400 Gallons

Holding Tank: 125 Gallons

Fuel Capacity: 2100 Gallons

Accommodations

Total Cabins: 4

Total Heads: 4

Hull and Deck Information

Hull Material: Fiberglass

Hull Configuration: Semi-Displacement

Engine Information

Engines: 2

Manufacturer: Caterpillar

Model: C-32

Engine Type: Inboard

Fuel Type: Diesel

DETAILED INFORMATION

Upgrades By Current Owner

REEL HAWK 2008 Hatteras 68CV

HIN# HATGT643H708

Engines- CAT C-32 1800HP P-RNC02715 S-RNC02712

*All the below is backed by supporting documentation

Additional Upgrades and Maintenance Since Major March 2019 Yard Period

- (2) Seakeeper 9 Gyro Stabilizers installed in **November 2019** by USA Yacht Stabilizers in Ft. Lauderdale
- (2) New Bluewater helm chairs **August 2020**
- Bottom job at Bradford Marine **August 2020**
- New cockpit non-skid **August 2020**
- Seakeeper Gyro Annual Service **August 2020**
- "2000 hr" main engines service including new main engines aftercooler cores **September 2020**
- New Front Loading Washer and Dryer **August 2020**

March 2019 Yard Period (after vessel purchased by current owner)

This project was completed at the Cable West Boatyard in Ft. Lauderdale under the direct supervision of an experienced 30 year Hatteras veteran captain. The owner wanted the vessel brought up to speed with all the latest gear after purchasing her from the original owner who kept her up in Maine in brackish water and winterized seasonally- the original owner had never fished her, only cruised. Current owner turned her into a fishing machine based out of the FLA keys

Items done by Cable West

- Bottom job including 2 coats micron CSC and propspeed on running gear
- Repaint transom after removing old lettering
- Recondition and dynamically balance props
- Align engines to ensure precise alignment
- Replace cutlass bearings
- Install LED lights throughout vessel, remove old halogen lights
- New 8 person Revere Elite Offshore liferaft, mounted on hardtop
- Flush freshwater tanks
- Polish fuel tanks
- New compressor for mezzanine bait freezer
- Install new underwater lights

- Rebuild RACOR housings
- Replace shaft seals
- Replace rudder bearings and seals
- Service rudder linkages
- Service generator heat exchangers
- Replace all flybridge overhead lights with LED
- Service all A/C units
- New Release Marine 6 hole battle saddle w/teak face tackle drawer and cover

New Electronics by Hi-Seas Technology (Hatteras Factory Installer)

- 3x Garmin 8617 17" touchscreen chartplotters at helm
- 2x Garmin chart card readers
- Replace Hatteras helm vessel control screen 15" Seatronix HD
- Garmin 6' open array 72 mile HD radar
- Garmin GSD sonar, spread spectrum 300W to 3KW
- Airmar Transducer B275C-LHW
- Furuno RD33 4.3" Depth/Data Screen
- (3) Garmin GC-12 cameras (2) engine room (1) cockpit
- Garmin 8610 10" touchscreen chartplotter on tower w/preloaded G3 charts
- KVH HD7 high definition SAT TV Antenna with (5) receivers throughout vessel
- Fusion stereo system with UD755 display, AM504 amp, and JL audio speakers
- Samsung 55" smart TV in salon
- Samsung 32" smart TV in master stateroom
- (3) Insignia 22" TV's in other staterooms
- Universal remote for entertainment systems in salon and (4) staterooms
- Wave Router MBR550 cellular + internal access point
- WIFI Wave Rogue Pro dual frequency router
- Lumishore underwater camera TIX402- wired to display on salon TV and helm plotters
- Lumishore exterior floodlights (5)
- Carbon fiber helm dash panel

Engine Work By N&G Engineering (1000hr service & more)

- Service main engines heat exchangers
- Service main engines aftercoolers
- Service transmissions oil coolers
- Perform main engines valve lash
- Remove and clean air breather canisters
- Replace coalescing filters and air elements
- New raw water pumps on both engines
- Service and reinstall all main engines turbos
- Service both generators as needed
- Replace insulation material as needed on generator sound shields
- Replace as needed engine room analog gauges

P&R Canvas (Hatteras Factory Installer)

- New Seacrylic rigid flybridge enclosure w/3 forward vents, 7 panels- center and side panels designed to fold up and fasten to hardtop as needed
- New Seacrylic rigid/strataglass mix aft flybridge enclosure pieces w/U zipper in center panel
- New cockpit fly cover, white stamoid
- New helm chair covers
- New interior carpet runners
- New cockpit aft shade w/carbon fiber extending poles
- New tower instrument panel cover

Pipewelders (Hatteras Factory Installer)

- New 44' Super Outriggers with bridge release and super stiff arm
- New 15' Center Rigger
- (2) New US-9 teaser reels installed in hard top designated compartment

Reverse Osmosis of South Florida

- New MaxQ MQM1226+AC 1200GPD watermaker with remote control display
- New Eskimo E1540X Icemaker with remote control display

Manufacturer Provided Description

Hatteras' 68 Convertible is built on a solid fiberglass, convex hull with deep propeller tunnels. The 68's hull shape features a warped bottom, which simply refers to a highly variable deadrise that flows from approximately 20 degrees in the midship sections to a nearly flat 2 degrees at the transom. The convexity of the bow reduces impact accelerations and contributes to an incredibly smooth head-sea ride. Double chines knock spray down and away, as does an exaggerated bow flare. Specially designed strakes that bisect the stagnation line -- the point at which the water's surface meets the hull bottom once on plane -- provide additional dynamic lift, increased stability and improved tracking in all sea conditions. Hatteras tunnels are significantly deeper than most, which reduces draft and allows larger propellers to be tucked in tighter to the hull. This reduces the amount of space needed between the tip of the blade and the hull bottom -- often to as little as 6 percent of the blade diameter. That tight fit into the tunnel provides uniform containment around the blades, which eliminates the slapping of water against the hull that you typically get with a flat bottom. It also helps accelerate the water through the blades, much like a bullet through the barrel of a gun. A sliding door leads to the luxurious salon, which features genuine cherry wood in either a satin or high-gloss polyester finish. A U-shaped, wrap-around lounge provides comfortable viewing of the 42-inch plasma TV, as well as storage below for assembled rods. In the galley you'll find several deep storage drawers and surplus pantry space. Under-counter refrigerators and solid-surface countertops keep the area clean, while a four-burner ceramic

cooktop and microwave/convection oven keep it functional. Genuine cherry inserts dress up the appliance fascias. Across from the galley is a large U-shaped dinette with drawers underneath for storage. The area even includes a computer work station for increased productivity on the water. The four-stateroom, four-head layout includes a spacious full-beam master stateroom amidship with king-sized tapered berth and padded headboard. Twin portlights provide ambient light, as well as an emergency exit. Two nightstands, dressers port and starboard, and a walk-in cedar-lined hanging locker accommodate a full complement of gear. The master head features solid-surface countertops, bowed-front cabinetry and Plexi mirror fascia for a spacious feel. Guests can bunk in a VIP guest stateroom in the bow or in the starboard guest stateroom, which includes side-by-side sliding berths. Crew's quarters with an upper/lower bunk arrangement lies to port. All compartments feature padded wall coverings and headliners.

With the 68C, Hatteras uses a patent-pending trim tab design that is located within the propeller tunnel. The tunnel trim-tab system utilizes the thrust energy of the tunnel for increased trim control. In a basic sense, it's the marine version of a thrust nozzle. These tabs achieve the same trim adjustment with only 30 percent of the tab area. A cylindrical keyway and key eliminates stress risers, leading to a significantly longer life for your shafts. Cross-cut bearings use crisscrossing grooves to disperse water and ensure a consistent film of lubricating water, giving longer life to your bearings and less noise while trolling or cruising. Stainless-steel rudders are far stronger and lighter than comparable bronze rudders. All air required for combustion is drawn from underneath the cockpit gunwales via ventilation fans. These fans reduce saltwater intrusion in the engine room, clean up the hullsides, and allow a quicker cooling of the engine room. The fans sense engine rpm and automatically adjust to draw in more or less air, based on the engine's requirement.

Standard Features

Note Features Below Taken off the Original Hatteras Yacht Build Sheet- This Does Not Account for Updates and Upgrades Since She Was Delivered New- See Updates and Upgrades Section for Current Items.

Exterior Finish/Construction• Isophthalic gelcoat, exterior layer, white• Blister-resistant vinylester resin in hull bottom skin coat• Hull and superstructure linear polyester/polyurethane coating• Polymer/copper-based anti-fouling bottom paint• Boot stripe, linear polyester/ polyurethane coating• Decks, non-skid surface, polyurethane paint with polymeric beads• Solid fiberglass hull bottom• Hull sides and superstructure laminated with PVC foam core• Fiberglass stringers• Steel laminated in stringers at key locations to bolt engine mounts• Engine room bulkheads and decks of resin-infused composite construction using PVC foam core with layers of fiberglass laminate on each side

Hardware and Miscellaneous• Finished wood bulkheads with satin or high-gloss polyester finish in genuine cherry, African mahogany or maple• All hardware polished chrome

with brushed chrome in galley• Fiberglass pulpit with welded and polished stainless-steel anchor chute and roller• 60-pound Danforth anchor, anchor line and deck hawse pipe• Windlass, 2500-pound with 25 feet of acculoy hot-dipped galvanized chain and 300 feet of rope with deck-mounted control switches• Two polished stainless-steel stern cleats and hawse pipes, through-bolted in aluminum backing plate• Four polished stainless-steel springline cleats with chafing strips, through-bolted in aluminum backing plate• Polished stainless-steel bow cleats and chocks with chafing strips, through-bolted in aluminum backing plate• Polished anodized welded aluminum rails on bow, side-deck and flybridge, drilled and tapped in aluminum backing plates• Powder-coated grab rails on cabin side and flybridge• Polished anodized welded aluminum flybridge ladder with acrylic steps

•Zincs on rudders and shafts• Dual air horn• Stainless-steel trim tabs• Manganese bronze struts• Stainless-steel shaft/rudders with zincs• 8-blade propellers, Nibral high performance• Alloy 22 high-strength propeller shafts, 4-inch, with zincs• Manganese bronze dripless shaft and rudder seals with thrust bearing on rudder shaft• Bow deck access to rope storage locker• Central vacuum system• Prop removal/installation tool• Black fenders (4)• Reboarding steps to cockpit• Deck plates for fuel and water fills and waste pump out• Heavy-duty bronze engine couplings• Generator exhaust, water separator• Dripless shaft seals with spare seals• Wireless remote control for cablemaster• Bow thruster tube

Engine Compartment and Bilge• Water manifold with centralized shut-off valve for sinks and showers• AC fluorescent lights• DC lights• DC exhaust blower• Twin diesel, freshwater-cooled main engines with electrically controlled marine gears, neutral interlocks, exhaust silencers, engine hour meters, alternators, fuel filters and seawater strainers• Two 27.5kW freshwater-cooled Electronic Quiet Diesel Onan generators(D) with shock mounts, seawater strainer, remote start, fuel/water separator, hour meter, water lift muffler and sound enclosure• Variable-speed air induction system for engine combustion air with two 16" vaneaxial fans ducted to cockpit and controlled by pressure and temperature (single fan reversible for flow-through ventilation)

• Polyethylene water lines• FM200 fixed fire extinguishing system for engine compartment with automatic and remote manual controls, plus audible and visual discharge signals• Pressurized 230-volt AC freshwater pump with central charcoal freshwater filter and back-flush capabilities• 230-volt AC 40-gallon electric water heater• Freshwater fill hose for engines and generator• 24-volt DC bilge and sump pumps: four at 3700 gph, two at 3800 gph and three at 2000 gph, with heavy-duty float switches and protective guards• Two auxiliary emergency bilge pumps, 300 gpm each, one in lazarette and one in engine room• Bronze/chrome-plated ball-valves through-bolted in solid fiberglass on all underwater through-hull fittings with electrical bonding throughout• AC compressed air system with air line and regulator• U.L. Marine-listed fiberglass fuel tanks constructed with fire-retardant resin and bronze fittings, and coated with fire-retardant paint• Fiberglass holding tanks with bronze fittings• Fiberglass water tanks, constructed with bronze fittings and materials which comply with the requirements of Title 21 for food and drugs• Sewage holding tank with 24-volt DC sewage pump, plumbed for dockside pump-out, with 3/4 full display and alarm as part of systems monitor programmable logic controller• U.L. Marine-listed fuel filter/water separator, generator• U.L. Marine-listed duplex fuel filters/water separators with

bypass manifold, engines• Monitoring consoles for main engines include all necessary gauges, start and stop switches• 110-volt AC reversible oil changing system for engines, gear and generator with Hatteras patented quick disconnect• Electric fuel priming pumps, engines• Electric fuel transfer system with two pumps, providing back-up capability, with filtration and dry tank protection for pump• United States Coast Guard type A1 U.L. Marine-listed fuel lines

• Seawater pressure system with AC pump• Air conditioning compressors and pumps• Welded and polished stainless-steel grab rails• Painted polyurethane engine room and bilges• Rubber deck mat between engines• Isolated discharge sea chests• Transducer well, glycol filled• Sealed shower sumps• Pultruded fiberglass rudder shelf• 1" stainless-steel steering tie bar with pivoting self-aligning ball joint connection at all cylinder and tie bar connections• Insulation in deck• Pick-up sea chests

Electrical Systems• Two 24-volt banks of heavy-duty, 12-volt marine batteries mounted in fire-retardant fiberglass boxes• Gel/lead acid compatible 240-volt automatic/programmable battery charger, 50/60 Hz• Automatic battery paralleling system with switch at control console• Air conditioning, 66,000 BTU, with reverse cycle heating, with A/C compressors, individually controlled by SMX controls• Two 240-volt, 50-amp, transformer connected retractable shore cords with over-current protection and wireless remote control, one each port and starboard• AC and DC light fixtures• AC dimmable lights• AC duplex outlets with ground fault protection• Battery control panels with fuses and isolation switches• DC distribution panel with magnetic circuit breakers• DC distribution panel with magnetic circuit breakers (engine compartment)• DC electronics panel with magnetic circuit breakers (bridge)• AC distribution panel with magnetic circuit breakers• AC switching panel with voltage source selector switches, volt meter, ammeter, frequency meters, twin generator start/stop controls, interlock selector breakers and voltage boost switches

• Computer controlled ethernet monitoring system with LCD touch screen display providing visual and audible signals for engines, gears, generators, high bilge water, fire warning in engine compartment, fire extinguisher discharge in engine compartment, AC power loss, smoke detectors, all tank level indication, low battery voltage, alternator failure, battery charger failure, bilge pump control and run indication, holding tank pump control and run indication, and carbon monoxide detectors. A history log is maintained for critical alarms and trends may be set up to view various parameters with respect to time. Additional monitoring points may be added to the system economically and easily• Ground fault protection on AC receptacles and lighting circuits• Navigation lights• Telephone/CATV inlets• Telephone and CATV shorelinecord, one each• Omni-directional TV antenna• U.L. 1426 listed boat cable, tin-coated with insulation• Ventilation fans in attic space

Flybridge• Computer controlled ethernet monitoring system with LCD touch screen display providing visual and audible signals for engines, gears, generators, high bilgewater, fire warning in engine compartment, fire extinguisher discharge in engine compartment, AC power loss, smoke detectors, all tank level indication, low battery voltage, alternator failure, battery charger failure, bilge pump control and run indication, holding tank pump control and run indication, and carbon monoxide detectors. A history log is maintained for critical alarms and

trends may be set up to view various parameters with respect to time. Additional monitoring points may be added to the system economically and easily. • Molded fiberglass • Top-loading insulated chill box, starboard • Straight lounge to starboard, U-shaped lounge forward around to port with removable vinyl-covered polyfoam cushions and storage underneath

- Rod storage in port, starboard and aft lounges • Neutral interlock switches allowing engine to start in neutral only • Polished anodized welded aluminum rails and stanchions • Powder-coated grab rails • Center control station with all switches • Engine synchronization control • Compass with dimmable light • Pod console with custom wheel and single-lever clutch and throttle controls (electronic) with emergency back-up and trolling valve control switches • Hydraulic power-assisted steering • Twin Murray Sea-19 adjustable teak helm chairs with stainless-steel hardware and footrest, and backing plate • Deck plate for optional third helm chair • AC weatherproof receptacle • Aft facing seat, aft of chill box and starboard lounge • Top-loading deep freezer, 8 cubic feet, forward outboard port side of the console • 24-volt DC distribution panel • Power-actuated electronics console

Cockpit • Molded fiberglass, 192 square feet including 25 square feet of seating • Seating with cushions across upper mezzanine • Scuppers • Polished anodized aluminum ladder to flybridge with acrylic steps

- Transom door • Two 50-amp shoreline retractable shore cords with remote • Seawater and freshwater wash down outlets with Hatteras patented quick disconnect • Shore water connections with pressure reducing valve and Hatteras patented quick disconnect, one each port and starboard • Two tackle drawers with perforated stainless-steel bottom, covered by cabinet door, starboard mezzanine • 10-cubic-foot bait freezer, port mezzanine • Three 18-gallon storage tubs, lower level mezzanine • Two 65" fish boxes with macerator, flush in-deck, hinged with gas cylinders • Molded-in transom fish box with drain, optional (F) • Seat hinged for access to engine compartment • Storage in steps to deckhouse, with chill box in top step • Sliding glass door to deckhouse • Fiberglass cockpit boarding step box with storage • DC overhead lights under flybridge overhang • Aluminum mounting plate laminated in deck for fighting chair • Telephone/CATV inlets • Polished stainless-steel rod holders, flush mount, set of 4 • Stainless-steel transom hawsers • Audio system control, LCD keypad and a pair of Pioneer Marine waterproof loudspeakers • Cockpit coaming lights

Utility Room • Freezer, 4.6 cubic feet • AC duplex outlet • AC and DC light fixtures • Central vacuum

Salon • Carpeting • Removable upholstered headliner • Finished wood bulkheads with satin or high-gloss polyester finish in genuine cherry, African mahogany or maple • Fluted wood valances with 2" wood blinds • Fixed frameless windows with tinted safety glass

- Whirlpool icemaker • Telephone outlet • AC and DC light fixtures • AC dimmable lights • AC duplex outlets • Electric panels • Boston Acoustics 5.1 surround-sound speakers • Entertainment center including 42" plasma TV with omni-directional antenna, AM/FM "surround sound" stereo receiver with DVD/CD player and one-touch RF remotecontrol system • U-shaped lounge with

rod storage, loose cushions, arm rests and double needle stitching• Bottle and glass storage• Throw pillows• Polished stainless-steel threshold at salon door• Air conditioning dispersed through fluted valances, port and starboard• Smoke detector• Sliding full glass door• Chair• Carbon monoxide detector

Galley/Dinette• Amtico vinyl-strip flooring• Removable upholstered headliner• Fluted wood valances with 2" wood blinds• Fixed frameless windows with dark tinted safety glass• Solid-surface countertops, under-mount sink and storage cabinets made of genuine wood to match interior finish• AC under-counter refrigerator and freezer drawer units• AC four-burner ceramic cooktop• Microwave/convection oven covered by cabinet door• One-half hp continuous feed garbage disposal• U-shaped dinette with drawer• Trash compactor• AC and DC light fixtures• AC dimmable lights• AC duplex outlets• Throw pillows• Telephone outlet• Central vacuum outlet• Air conditioning dispersed through fluted valances, port and starboard

- Drawers: (2) in galley fascia, (1) in upper cabinet behind door• Genuine wood inserts to match interior finish on appliance fascia

Lower Companionway• Carpeting• Removable upholstered headliner• Wallcovering• DC light fixtures• Flush-panel genuine wood doors to match interior finish with door stops to master stateroom, guest stateroom and day head• Steps to salon• Washer/dryer• Access hatches to all bilges• Access to port/starboard storage with DC light

Full-Beam Master Stateroom• Carpeting• Removable upholstered headliner• Wallcovering• Finished wood bulkheads with satin or high-gloss polyester finish in genuine cherry, African mahogany or maple• Padded panels on hullside• King-sized tapered berth with upholstered headboard• Upholstered berth base• Polyfoam mattress, spread, throw pillows, pillows, pillow shams, mattress pad and sheets (E)• Walk-in cedar-lined hanging locker with door and automatic light• Nightstands, port and starboard, with drawers• Dressers, port and starboard with drawers• AC and DC light fixtures• AC dimmable lights• AC duplex outlets• 20" LCD TV with MATV outlet• AM/FM audio access with local DVD/CD changer and a one-touch master universal remote with RF control• Boston Acoustics loudspeakers• Telephone outlet• Full-length mirror• Plexi-mirror directly behind berth with Whisperwall panels• Private access to head with door stop• Ventilating portlights, port and starboard• Carbon monoxide detector

- Air conditioning dispersed through fluted valances, port and starboard• Smoke detector• DC low-voltage lights under berth• SMX HVAC compartment controlled

Guest Stateroom (Starboard)• Carpeting• Removable upholstered headliner• Wallcovering• Finished wood bulkheads with satin or high-gloss polyester finish in genuine cherry, African mahogany or maple• Convertible twin/queen berths with upholstered headboard and storage under berths• Carbon monoxide detector• Upholstered berth bases• Polyfoam mattresses, spreads, throw pillows, pillows, pillow shams, mattress pads and sheets (E)• Cedar-lined hanging locker with door and automatic light• Air conditioning dispersed through fluted wood soffit• Blanket locker, outboard• Nightstand with drawer• Full-length mirror• AC and DC light fixtures• AC duplex outlets• AC dimmable lights• AM/FM audio access with local

DVD/CD changer and a one-touch master universal remote with RF control and a pair of Boston Acoustics loudspeakers• Hinged door with private access to head• 20" LCD with MATV outlet• Central vacuum outlet

Guest Stateroom (Bow)• Carpeting• Removable upholstered headliner• Wallcovering• Finished wood bulkheads with satin or high-gloss polyester finish in genuine cherry, African mahogany or maple• Padded panels on hullside• Queen-sized tapered berth with upholstered headboard and cedar lined storage underneath accessed via pneumatic cylinders• Upholstered berth base

• Polyfoam mattress, spread, throw pillows, pillows, pillow shams, mattress pad and sheets (E)• Built-in dresser, port and starboard• Carbon monoxide detector• Cedar-lined hanging lockers with automatic light• Overhead storage lockers, port and starboard• Screened overhead hatch with privacy cover• Nightstands, port and starboard• AC and DC light fixtures• AC dimmable lights• AC duplex outlets• Full-length mirror• 20" LCD with MATV outlet• AM/FM audio access with local DVD/CD changer and a one-touch master universal remote with RF control and a pair of Boston Acoustics loudspeakers• Plexi-mirror (forward bulkhead)• Private access to head with door stop• Telephone outlet• Smoke detector• DC low-voltage lights under berth• Pocket door to stateroom• Air conditioning dispersed through fluted wood soffits, port

Crew's Stateroom (Port)• Carpeting• Removable upholstered headliner• Padded wallcovering• Upper and lower berths with cedar-lined storage under lower berth• Polyfoam mattresses, spreads, throw pillows, pillows, pillow shams, mattress pads and sheets (E)• Cedar-lined hanging locker with door and light• AC and DC light fixtures• AC dimmable lights• AC duplex outlets• Dresser with drawers• Audio system control, LCD keypad and a pair of Boston Acoustics loudspeakers• Full-length mirror• Private access to head with door stop• Carbon monoxide detector

Master Head• Amtico vinyl-strip flooring• Removable upholstered headliner• Wallcovering• Solid-surface countertops with solid surface backsplash, side splash and integral sink over storage cabinet made of genuine wood to match interior finish with bowed fronts• Linen storage• Hardwood base boards• Shower with single door, seat and automatic enclosed sump pump• Storage cabinet with mirror• Towel bars (2)• Headhunter freshwater toilet

• 120-volt AC air freshener blower• AC and DC light fixtures• AC duplex outlet• Plexi-mirror around upper cabinet• DC low-voltage lights under toe kicks• Air conditioning discharge• Holding tank $\frac{3}{4}$ full indicator light

Guest Day Head (Port)• Amtico vinyl-strip flooring• Removable upholstered headliner• Wallcovering• Upper storage cabinet with mirror• Solid-surface countertops with solid surface backsplash, side splash and integral sink over storage cabinet made of genuine wood to match interior finish with bowed fronts• Stall shower with door, seat and automatic enclosed sump pump• Towel bar• Headhunter freshwater toilet• 120-volt AC air freshener blower• AC and DC light fixtures• AC duplex outlet• Plexi-mirror around upper cabinet• Hardwood base boards• DC low-voltage lights under toe kicks• Linen storage• Holding tank $\frac{3}{4}$ full indicator light

Guest Heads (Starboard and Bow)• Amtico vinyl-strip flooring• Removable upholstered headliner• Wallcovering• Upper storage cabinet with mirror• Solid-surface countertops with solid surface backsplash, side splash and integral sink over storage cabinet made of genuine wood to match interior finish with bowed fronts• Plexi-mirror around upper cabinet• Stall shower with door, seat and automatic enclosed sump pump• Screened overhead hatch with privacy cover• Towel bars• Headhunter freshwater toilet• 120-volt AC air freshener blower• AC and DC light fixtures• AC duplex outlet• DC low-voltage lights under toe kicks• Hardwood base boards• Holding tank ¾ full indicator light

Exclusions

Owner's personal belongings.

Disclaimer

The Company offers the details of this vessel or yacht in good faith but cannot guarantee or warrant the accuracy of this information nor warrant the condition of the vessel. A buyer should instruct his representatives, agents, or his surveyors, to investigate such details as the buyer desires validated. This vessel or yacht is offered subject to prior sale, price change, or withdrawal without notice.

PHOTOS

2



3



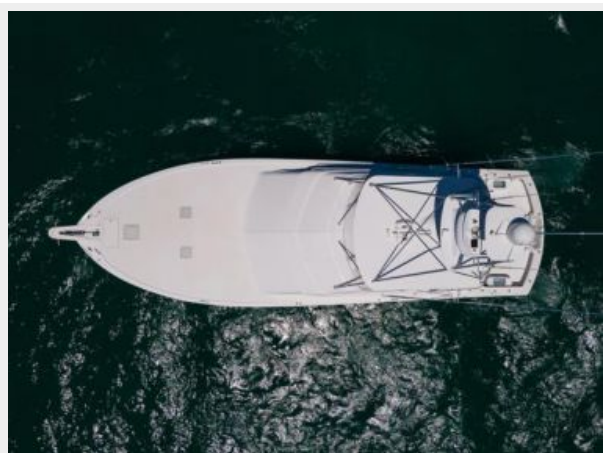
4



5



6



7



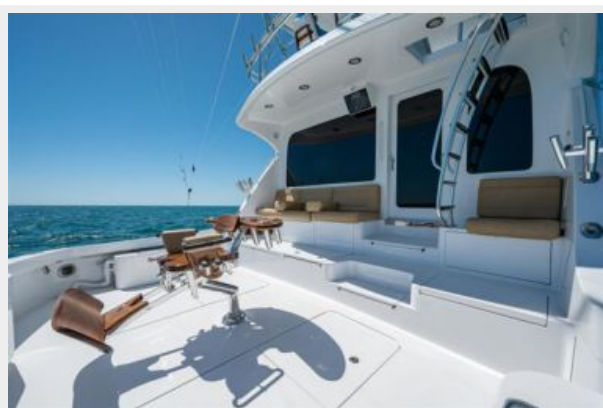
8



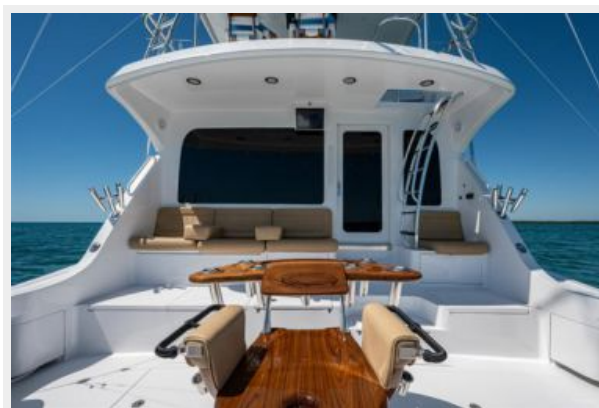
9



10



11



12



13



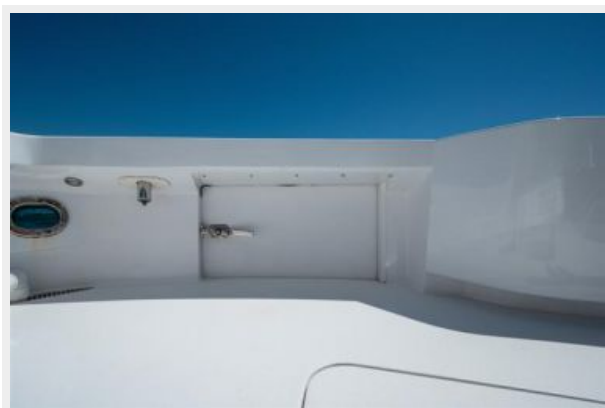
14



15



16



17



18



19



21



20



22



23



24



25



26



27



28



29



30



31



32



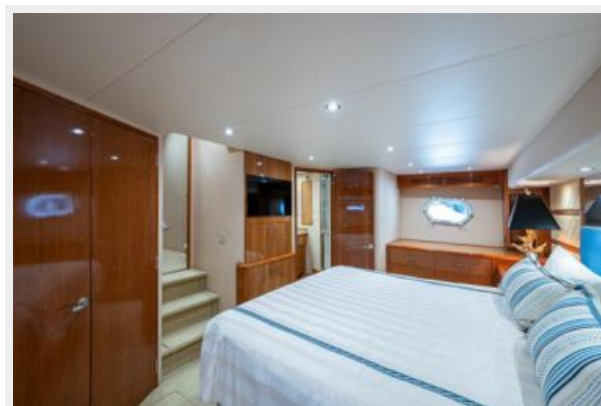
33



34



35



36



37



38



39



40



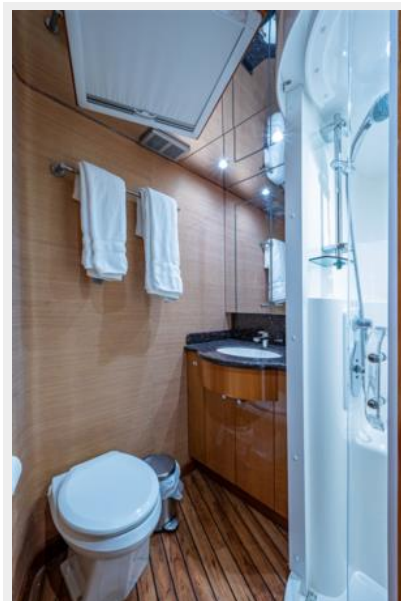
41



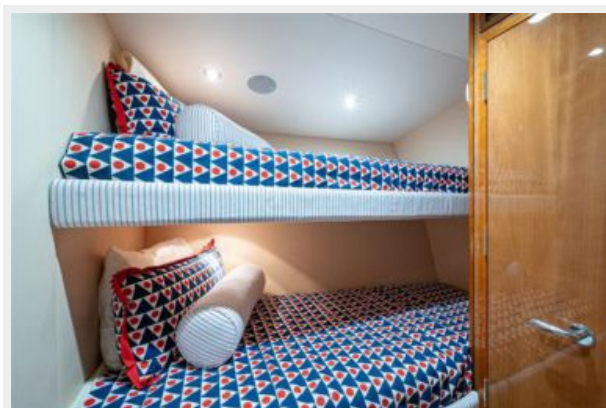
42



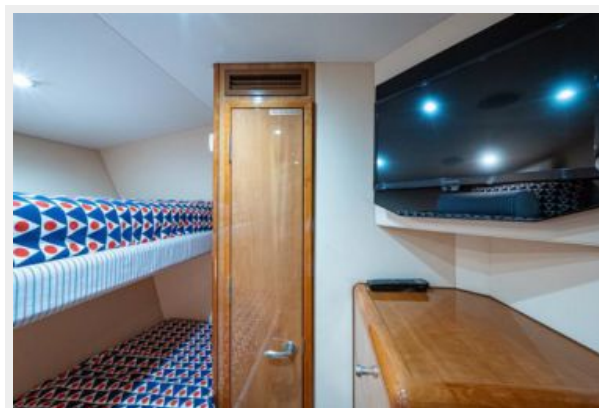
43



44



45



46



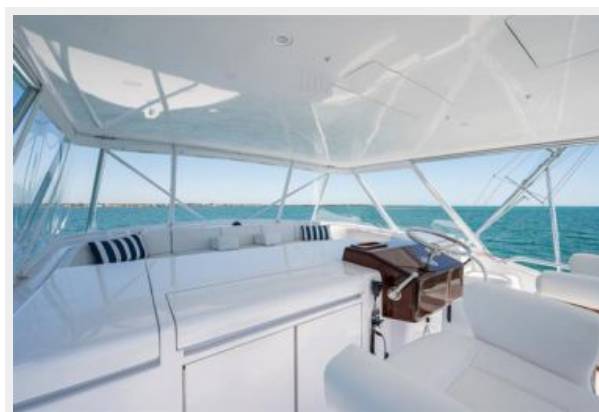
47



48



49



50



51



52



53



54



55



56



57



58



59



61



60



62



63



64



65



66



67



68



CONTACTS

Andrey Shestakov, leading yacht broker of the sales department of Shestakov Yacht Sales Inc. Shestakov Yacht Sales Inc., the official representative of the Miami/Fort Lauderdale FL headquarters.

Contact details

Email: **andrey@shestakovyachtsales.com**

Web: shestakovyachtsales.com/en/

Telephones

USA: **+1(954)274-4435**

Office hours

Monday – Saturday: **9:00 - 21:00 EDT**

Sunday: **closed**

Address



Harbour Towne Marina, 850 NE 3rd St,
STE 213, Dania, FL 33004