

## BABOUSHA — RIVA



**Builder:** RIVA

**Year Built:** 2008

**Model:** Motor Yacht

**Price:** PRICE ON APPLICATION

**Location:** Italy

**LOA:** 116' 2" (35.40m)

**Beam:** 23' 3" (7.08m)

**Max Draft:** 67' 4" (20.50m)

**Cruise Speed:** 23 Kts. (26 MPH)

**Max Speed:** 27 Kts. (31 MPH)

Our experienced yacht broker, Andrey Shestakov, will help you choose and buy a yacht that best suits your needs **Babousha — RIVA** from our catalogue. Presently, at Shestakov Yacht Sales Inc., we have a wide variety of yachts available on our sale's list. We also work in close contact with all the big yacht manufacturers from all over the world.

If you would like to buy a yacht **Babousha — RIVA** or would like help answering any questions concerning purchasing, selling or chartering a yacht, please call **+1(954)274-4435**

# TABLE OF CONTENTS

TABLE OF CONTENTS	2
SPECIFICATIONS	5
Basic Information	5
Dimensions	5
Speed, Capacities and Weight	5
Accommodations	5
Hull and Deck Information	5
Engine Information	6
DETAILED INFORMATION	7
Accommodations	7
Machinery	7
Generators & Auxiliary equipment	7
Ancillary equipment	7
Deck Equipment	8
Tenders	8
Refit summary	8
Exclusions	10
Disclaimer	10
PHOTOS	11
1	11
2	11
riva-115-athena-babousha-navigation-2	11
athena231ph_bluepassion	11
athena209ph_bluepassion	11
athena314ph_bluepassion	11
athena315ph_bluepassion	12
athena319ph_bluepassion	12
athena320ph_bluepassion	12

---

athena328ph_bluepassion	12
athena300ph_bluepassion	12
athena326ph_bluepassion	12
athena190ph_bluepassion	12
athena198ph_bluepassion	12
athena196ph_bluepassion	13
athena142ph_bluepassion	13
athena138ph_bluepassion	13
athena134ph_bluepassion	13
athena160ph_bluepassion	13
athena166ph_bluepassion	13
athena002ph_bluepassion	13
athena005ph_bluepassion	13
athena012ph_bluepassion	14
athena015ph_bluepassion	14
athena027ph_bluepassion	14
athena021ph_bluepassion	14
athena029ph_bluepassion	14
athena030ph_bluepassion	14
athena033ph_bluepassion	14
athena146ph_bluepassion	14
athena265ph_bluepassion	15
athena267ph_bluepassion	15
athena130ph_bluepassion	15
athena108ph_bluepassion	15
athena106ph_bluepassion	15
athena115ph_bluepassion	15
athena251ph_bluepassion	15
CONTACTS	16

---

---

Contact details	16
Telephones	16
Office hours	16
Address	16

---

# SPECIFICATIONS

---

## Basic Information

---

**Category:** Motor Yacht

**Model Year:** 2008

**Year Built:** 2008

**Refit Year:** 2016

**Country:** Italy

## Dimensions

---

**LOA:** 116' 2" (35.40m)

**Beam:** 23' 3" (7.08m)

**Max Draft:** 67' 4" (20.50m)

## Speed, Capacities and Weight

---

**Cruise Speed:** 23 Kts. (26 MPH)

**Max Speed:** 27 Kts. (31 MPH)

**Gross Tonnage:** 237 Pounds

**Water Capacity:** 1056.688208 Gallons

**Fuel Capacity:** 6194.8346194 Gallons

## Accommodations

---

**Total Cabins:** 5

**Sleeps:** 10

**Crew Sleeps:** 5

## Hull and Deck Information

---

**Hull Material:** GRP

---

## Engine Information

---

**Engines:** 2

**Manufacturer:** MTU

**Model:** 12V M90

**Engine Type:** Inboard

**Fuel Type:** Diesel

---

# DETAILED INFORMATION

---

## Accommodations

---

Accommodates 10 guests in 5 spacious cabins

- Master stateroom on the main deck
- 2 x double staterooms
- 2 x twin staterooms on the lower deck

Can sleep 5 x crew

## Machinery

---

Engines: 2 x MTU 12V M90 2040 kw (2700 hp) @ 2100 rpm

Engine hours (April 2021):

- STBD: 2,293
- Port: 2,297

Steering & propulsion:

- Reverse gears ZF (model: 4650 A)
- Shaft: Aquamet 17
- Blade: Nibral
- Seal Rexmar TS

## Generators & Auxiliary equipment

---

Generators: 2 x Kohler Power system 50 Hz (model: 50EFOZD)

Generator hours (April 2021): 8,939 and 9,394 respectively

Electrical:

- AC power supply 220V single phase 380V three phase
- Frequency 50Hz
- DC power supply 24V
- Battery charger Mass

## Ancillary equipment

---

- Bow thruster: stabiliser power pack 20" ABT
- Gearbox gangway: Super Platinum Inside Lux 380 V Solenoid valve
- Antirolling gyro MSM 4000B1A
- Hamman sewage treatment
- Bilge separator
- Water maker Idromar 180 lt/hr
- Transfer oil pump Reverso GP 3025
- Diesel oil separator Alfa Laval Tuma MAB 104B 14/24
- Black water vacuum pumpo 2 x Jets 25 MBA
- Boiler for A/C Condaria 3 x 6 kw
- Fire pump ACM BT 501 230 400V 50 Hz
- Bilge pump ACM BT 501
- Sea water pump for A/C CB 41E
- Hot water pump for /C CB 41E
- Grey water pump MV44
- Transfer fuel pump 2 x CP40 S
- Fresh water pressure system 2Jet 518 VE
- Hot water circulation pump 2 x Grundfos UP B serie 100
- Emergency rudder pump
- Boiler 2 x Perla 5
- Water diesel oil separator MM/EE 2 x Separ 2000/40 UMS
- Water diesel oil separator DD/EE 2 x Racor 500 FG
- Anchor windlass 2 x Lofrans Vertical Ercole
- Winches 2 x Lofrans Capstan T 2500W
- Windlass 2 x Lofrans Vertical Ercole T 3500 W
- Emergency manual pump Excelsion 5
- A/C system WM RE 60004 CO2
- Conditioning filter Idromar CT3R1

---

## Deck Equipment

---

Swimming ladder

---

## Tenders

---

Williams tender

---

## Refit summary

---

2016:



- Hull painting
- Teak repairs
- Interior upgrades
- New TV elevator mechanism
- New sunbrella cushions
- New aft teak table
- New table for 8 pax (Corian table top)

2017:

- Engine service

2018:

- Bathing ladder service
- New sea water pump
- Watermaker service
- New wi-fi system
- New UPS system

2019:

- Watermaker booster pump replaced
- A/C system maintenance
- Generator annual service
- Full QL3 on engines
- MTU engines: new turbos
- 12 x new injectors (stbd engine)
- New pumps

2020:

- Shafts, propellers & pumps maintenance
- QLR3 service on port engine
- Annual generator service
- Teak rubber change
- Anchor extension (30m)
- Life raft & fire extinguishers inspection & service
- Underwater cleaning
- Icemaker check

- Tanks cleaning
- Hamman service
- New bearing shafts & seals
- Alfa Laval maintenance
- New windlass
- New Wi-Fi device

2021:

- Desalinator maintenance
- Generator batteries change
- Washer & dishwasher maintenance
- A/C maintenance
- SSB battery replacement
- VHF service battery replacement
- MTU service battery replacement
- Megger test
- Tender & safety equipment annual maintenance
- Hull anodes change

## Exclusions

---

Owner's personal belongings.

## Disclaimer

---

The Company offers the details of this vessel or yacht in good faith but cannot guarantee or warrant the accuracy of this information nor warrant the condition of the vessel. A buyer should instruct his representatives, agents, or his surveyors, to investigate such details as the buyer desires validated. This vessel or yacht is offered subject to prior sale, price change, or withdrawal without notice.

# PHOTOS

1



2



**riva-115-athena-babousha-navigation-2**

**athena231ph\_bluepassion**



**athena209ph\_bluepassion**

**athena314ph\_bluepassion**



**athena315ph\_bluepassion**



**athena319ph\_bluepassion**



**athena320ph\_bluepassion**



**athena328ph\_bluepassion**



**athena300ph\_bluepassion**



**athena326ph\_bluepassion**



**athena190ph\_bluepassion**



**athena198ph\_bluepassion**





**athena196ph\_bluepassion**



**athena142ph\_bluepassion**



**athena138ph\_bluepassion**



**athena134ph\_bluepassion**



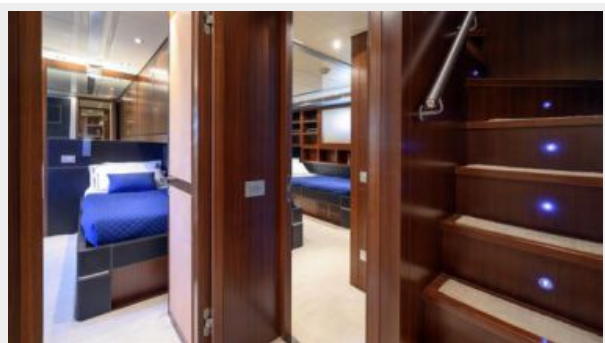
**athena160ph\_bluepassion**



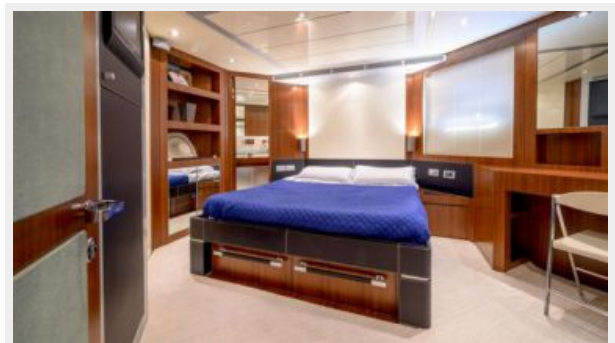
**athena166ph\_bluepassion**



**athena002ph\_bluepassion**



**athena005ph\_bluepassion**



**athena012ph\_bluepassion**



**athena015ph\_bluepassion**



**athena027ph\_bluepassion**



**athena021ph\_bluepassion**



**athena029ph\_bluepassion**



**athena030ph\_bluepassion**



**athena033ph\_bluepassion**



**athena146ph\_bluepassion**





**athena265ph\_bluepassion**



**athena267ph\_bluepassion**



**athena130ph\_bluepassion**



**athena108ph\_bluepassion**



**athena106ph\_bluepassion**



**athena115ph\_bluepassion**



**athena251ph\_bluepassion**



---

# CONTACTS

---

Andrey Shestakov, leading yacht broker of the sales department of Shestakov Yacht Sales Inc. Shestakov Yacht Sales Inc., the official representative of the Miami/Fort Lauderdale FL headquarters.

---

## Contact details

---

Email: [andrey@shestakovyachtsales.com](mailto:andrey@shestakovyachtsales.com)

Web: [shestakovyachtsales.com/en/](http://shestakovyachtsales.com/en/)

---

## Telephones

---

USA: +1(954)274-4435

---

## Office hours

---

Monday – Saturday: **9:00 - 21:00** EDT

Sunday: **closed**

---

## Address

---



Harbour Towne Marina, 850 NE 3rd St,  
STE 213, Dania, FL 33004