

AF — BENETTI



Builder: BENETTI

Year Built: 1974

Model: Motor Yacht

Price: PRICE ON APPLICATION

Location: Italy

LOA: 84' 0" (25.60m)

Beam: 19' 1" (5.80m)

Min Draft: 8' 7" (2.60m)

Cruise Speed: 10.5 Kts. (12 MPH)

Max Speed: 12.5 Kts. (14 MPH)

Our experienced yacht broker, Andrey Shestakov, will help you choose and buy a yacht that best suits your needs **AF — BENETTI** from our catalogue. Presently, at Shestakov Yacht Sales Inc., we have a wide variety of yachts available on our sale's list. We also work in close contact with all the big yacht manufacturers from all over the world.

If you would like to buy a yacht **AF — BENETTI** or would like help answering any questions concerning purchasing, selling or chartering a yacht, please call **+1(954)274-4435**

TABLE OF CONTENTS

TABLE OF CONTENTS	2
SPECIFICATIONS	4
Overview	4
Basic Information	4
Dimensions	4
Speed, Capacities and Weight	5
Accommodations	5
Hull and Deck Information	5
Engine Information	5
DETAILED INFORMATION	6
Technical Specifications	6
Exclusions	7
Disclaimer	7
PHOTOS	9
BENETTI 26D - Design Luca Catino - Flybridge	9
BENETTI 26D - Design Luca Catino - Aerial	9
BENETTI 26D - Design Luca Catino - Flybridge (2)	9
BENETTI 26D - Design Luca Catino - Flybridge (3)	9
BENETTI 26D - Design Luca Catino - Salon (2)	9
BENETTI 26D - Design Luca Catino - Salon	9
BENETTI 26D - Design Luca Catino - Salon (front view)	10
BENETTI 26D - Design Luca Catino - Dining	10
BENETTI 26D - Design Luca Catino - Owner cabin	10
BENETTI 26D - Design Luca Catino - Owner cabin (2)	10
BENETTI 26D - Design Luca Catino - Owner cabin en-suite	10
BENETTI 26D - Design Luca Catino - Owner cabin (3)	10
BENETTI 26D - Design Luca Catino - Owner cabin en-suite (2)	11
BENETTI 26D - Design Luca Catino - VIP cabin	11

BENETTI 26D - Design Luca Catino - VIP cabin en-suite	11
BENETTI 26D - Design Luca Catino - VIP cabin (2)	11
BENETTI 26D - Design Luca Catino - Guests cabin	12
BENETTI 26D - Design Luca Catino - Guests cabin (2)	12
BENETTI 26D - Design Luca Catino - Guests cabin en-suite	12
BENETTI 26D - Design Luca Catino - Galley	12
BENETTI 26D - Design Luca Catino - Laundry	13
BENETTI 26D - Design Luca Catino - Galley (2)	13
BENETTI 26D - Design Luca Catino - Wheelhouse	13
BENETTI 26D - Design Luca Catino - Wheelhouse	13
BENETTI 26D - Design Luca Catino - Day head	14
BENETTI 26D - Design Luca Catino - GA	14
CONTACTS	15
Contact details	15
Telephones	15
Office hours	15
Address	15

SPECIFICATIONS

Overview

AF is a 25.6-metre motor yacht built and launched in Italy in 1974 by the Fratelli Benetti shipyard. An extensive rebuild process is currently ongoing at MCS Shipyard in Imperia, Italy. Her interior configuration has been designed to accommodate up to six guests in three cabins and carry up to three crew members to ensure a comfortable onboard experience. Designer Luca Catino refreshed the exteriors and interiors yet preserved the original style that distinguishes the traditional shape of the Benetti canoe stern yachts. M/Y AF features a displacement hull with a typical canoe stern, a central skeg and two shaft lines on either side of a balanced rudder. The onboard systems will be renewed, and the main engines will be completely overhauled.

Basic Information

Category: Motor Yacht

Sub Category: Displacement

Model Year: 2021

Year Built: 1974

Refit Year: 2021

Refit Type: Rebuild

Country: Italy

Vessel Top: Hardtop

Fly Bridge: Yes

Dimensions

LOA: 84' 0" (25.60m)

Beam: 19' 1" (5.80m)

Min Draft: 8' 7" (2.60m)

MFG Length: 78' 5" (23.90m)

Speed, Capacities and Weight

Cruise Speed: 10.5 Kts. (12 MPH)

Cruise Speed Range: 2000

Max Speed: 12.5 Kts. (14 MPH)

Displacement: 264554.7144 Pounds

Gross Tonnage: 121 Pounds

Water Capacity: 1849.204364 Gallons

Holding Tank: 906.11013836 Gallons

Fuel Capacity: 5811.785144 Gallons

Accommodations

Total Cabins: 3

Total Berths: 3

Sleeps: 6

Total Heads: 4

Crew Cabin: 2

Crew Berths: 3

Crew Sleeps: 3

Crew Heads: 1

Hull and Deck Information

Hull Material: Steel

Deck Material: Teak

Hull Configuration: Full Displacement

Hull Color: White

Hull Finish: Steel

Hull Designer: Benetti

Exterior Designer: Luca Catino

Interior Designer: Luca Catino

Engine Information

Engines: 2

Manufacturer: MAN

Model: D2866 LXE 40

Engine Type: Inboard

Fuel Type: Diesel

DETAILED INFORMATION

Technical Specifications

Type	Motor Yacht	
Year	1974	
Refit	2021	
L _{OA}	25.60 m	83.9 ft
Beam	5.80 m	19.0 ft
L _H	23.90 m	78.4 ft
Draft @ half load	2.60 m	8.5 ft
Gross tonnage	121	
Full Load Displacement	120 t	
Hull Material	Steel	
Superstructure Material	Fiberglass	
Hull Color	White	
Superstructure Color	White	
Hull Configuration	Displacement	
Naval Architect	Benetti	
Exterior Designer	Luca Catino	
Interior Designer	Luca Catino	
Staterooms	3	
Sleeps	6	
Crew Quarters	2	
Crew Berths	3	
Class	ISO CE Cat. A – Pleasure Craft	
Capacities		
Cruise Speed	10.5 kn	
Max. Speed	12.5 kn	
Fuel Capacity	22,000 l	5,811 US Gallons
Fresh Water Capacity	1,700 l	449 US Gallons
Black Water Capacity	1,580 l	417 US Gallons
		488 US

Grey Water Capacity	1,850 l	Gallons
Max. Range	2,000 nm	@10.5 knots

Machinery

Engines	2x MAN 294 kW (400 hp) @ 2,100 rpm
Engine Model	D2866 LXE40
Reduction Gear	2x Twindisc
Transmission	Shaft line
Propeller	4-blades bronze
Bow Thruster	CMC 50kW
Generators	2x 25kW Kohler
Rudders	1x AISI 316 stainless steel
Stabilizers	CMC STAB 30 - electric
Shore Power	230V/24V– 50Hz
Air Conditioning	Condaria 100,000 BTU/h
Watermaker	Idromar 200 l/h
Water Heater	100 l

Navigation Electronics

Gyro Compass Sperry & Richie
Echosounder Furuno Navnet vx2
C-MAP Chartplotter Navnet vx2 C-MAP with Navionics maps
GPS Furuno

Deck Equipment

Anchor windlass
2x capstans (bow)
2x capstans (stern)
Anchor system

Exclusions

Owner's personal belongings.

Disclaimer

The Company offers the details of this vessel or yacht in good faith but cannot guarantee or warrant the accuracy of this information nor warrant the condition of the vessel. A buyer should instruct his representatives, agents, or his surveyors, to investigate such details as the buyer desires validated. This vessel or yacht is offered subject to prior sale, price change, or withdrawal without notice.

PHOTOS

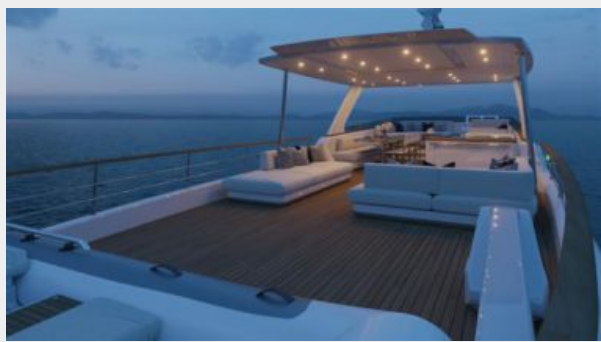
BENETTI 26D - Design Luca Catino - Aerial



BENETTI 26D - Design Luca Catino - Flybridge



BENETTI 26D - Design Luca Catino - Flybridge (2)



BENETTI 26D - Design Luca Catino - Flybridge (3)



BENETTI 26D - Design Luca Catino - Salon



BENETTI 26D - Design Luca Catino - Salon (2)



BENETTI 26D - Design Luca Catino - Dining



BENETTI 26D - Design Luca Catino - Salon (front view)



BENETTI 26D - Design Luca Catino - Owner cabin



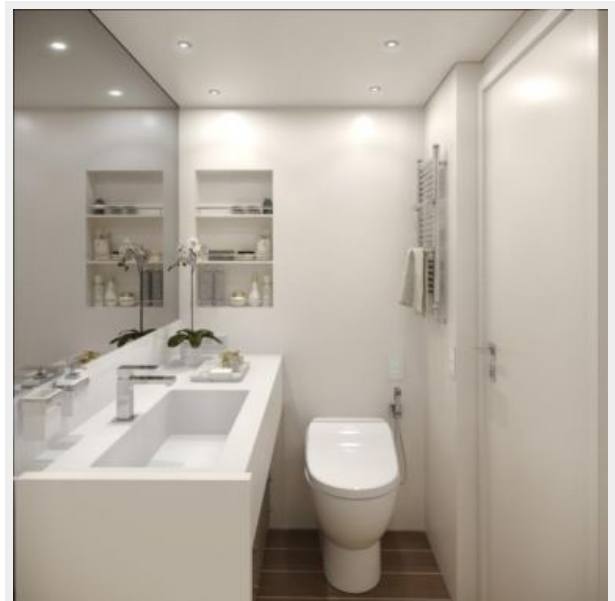
BENETTI 26D - Design Luca Catino - Owner cabin (2)



BENETTI 26D - Design Luca Catino - Owner cabin (3)



BENETTI 26D - Design Luca Catino - Owner cabin en-suite



**BENETTI 26D - Design Luca Catino - Owner
cabin en-suite (2)**



**BENETTI 26D - Design Luca Catino - VIP
cabin**



**BENETTI 26D - Design Luca Catino - VIP
cabin en-suite**

**BENETTI 26D - Design Luca Catino - VIP
cabin (2)**



BENETTI 26D - Design Luca Catino - Guests cabin **BENETTI 26D - Design Luca Catino - Guests cabin (2)**



BENETTI 26D - Design Luca Catino - Guests cabin en-suite

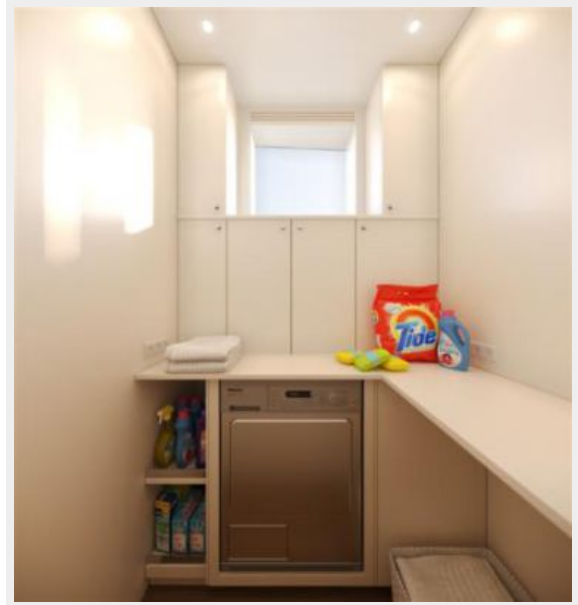


BENETTI 26D - Design Luca Catino - Galley



**BENETTI 26D - Design Luca Catino -
Laundry**

**BENETTI 26D - Design Luca Catino - Galley
(2)**



**BENETTI 26D - Design Luca Catino -
Wheelhouse**

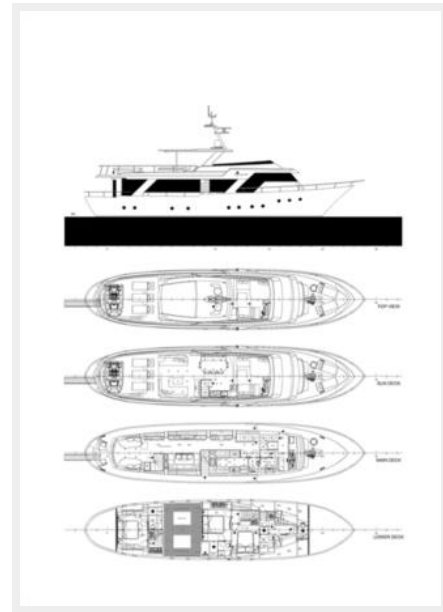
**BENETTI 26D - Design Luca Catino -
Wheelhouse**



BENETTI 26D - Design Luca Catino - Day head



BENETTI 26D - Design Luca Catino - GA



CONTACTS

Andrey Shestakov, leading yacht broker of the sales department of Shestakov Yacht Sales Inc. Shestakov Yacht Sales Inc., the official representative of the Miami/Fort Lauderdale FL headquarters.

Contact details

Email: andrey@shestakovyachtsales.com

Web: shestakovyachtsales.com/en/

Telephones

USA: +1(954)274-4435

Office hours

Monday – Saturday: **9:00 - 21:00** EDT

Sunday: **closed**

Address



Harbour Towne Marina, 850 NE 3rd St,
STE 213, Dania, FL 33004