

SQUETA — SEA RAY



Builder: SEA RAY

Year Built: 2002

Model: Motor Yacht

Price: PRICE ON APPLICATION

Location: United States

LOA: 32' 3" (9.83m)

Beam: 11' 2" (3.40m)

Max Draft: 3' 0" (0.91m)

Our experienced yacht broker, Andrey Shestakov, will help you choose and buy a yacht that best suits your needs **Squeta — SEA RAY** from our catalogue. Presently, at Shestakov Yacht Sales Inc., we have a wide variety of yachts available on our sale's list. We also work in close contact with all the big yacht manufacturers from all over the world.

If you would like to buy a yacht **Squeta — SEA RAY** or would like help answering any questions concerning purchasing, selling or chartering a yacht, please call **+1(954)274-4435**

TABLE OF CONTENTS

TABLE OF CONTENTS	2
SPECIFICATIONS	5
Overview	5
Basic Information	5
Dimensions	5
Speed, Capacities and Weight	5
Accommodations	5
Hull and Deck Information	5
Engine Information	5
DETAILED INFORMATION	6
Electronics	6
Inside Equipment	6
Electrical Equipment	6
Exclusions	6
Disclaimer	6
PHOTOS	7
Photo_1080295458_DJI_34_jpg_4400303_0_2021413112140_photo_original-Edit	7
Photo_1080295457_DJI_33_jpg_4370256_0_2021413112122_photo_original	7
Photo_1080295459_DJI_35_jpg_4478868_0_2021413112146_photo_original	7
Photo_1080295460_DJI_36_jpg_4598794_0_2021413112232_photo_original	7
Photo_1080295464_DJI_40_jpg_4746327_0_202141311250_photo_original-Edit	7
Photo_1080295466_DJI_42_jpg_4480407_0_2021413112550_photo_original-Edit	7
731A0789	7
731A0792	7
731A0794	7
731A0796	7
731A0798	8
731A0803	8

731A0805	8
731A0809	8
731A0815	8
731A0817	8
731A0818	8
731A0819	8
731A0820	8
731A0821	8
731A0822	9
731A0824	9
731A0829	9
731A0826	9
Photo_1080295467_DJI_43_jpg_4484334_0_2021413112558_photo_original-Edit	9
731A0831	9
Photo_1080295468_DJI_44_jpg_4474751_0_2021413112614_photo_original-Edit	9
Photo_1080295470_DJI_46_jpg_4273803_0_2021413112644_photo_original	9
Photo_1080295473_DJI_49_jpg_4635540_0_2021413112744_photo_original-Edit	10
Photo_1080295472_DJI_48_jpg_4464437_0_202141311274_photo_original	10
731A0789	10
731A0792	10
731A0794	10
731A0796	10
731A0798	10
731A0803	10
731A0805	10
731A0809	10
731A0815	11
731A0817	11
731A0818	11

731A0819	11
731A0820	11
731A0821	11
731A0822	11
731A0824	11
731A0829	11
731A0826	11
731A0831	12
CONTACTS	13
Contact details	13
Telephones	13
Office hours	13
Address	13

SPECIFICATIONS

Overview

This 2002 Sea Ray Sundancer was re-powered in 2019 with Mercruiser 350 MPI engines approximately 120 hours on the new engine. The boat has Garmin electronics including radar and is one of the few boats with a bow thruster and stern thruster.

RECENTLY SERVICED ENGINE AND GENERATOR APRIL 2020

Basic Information

Category: Motor Yacht

Model Year: 2002

Year Built: 2002

Country: United States

Dimensions

LOA: 32' 3" (9.83m)

Beam: 11' 2" (3.40m)

Max Draft: 3' 0" (0.91m)

Speed, Capacities and Weight

Displacement: 27600000 Pounds

Water Capacity: 40 Gallons

Holding Tank: 28 Gallons

Fuel Capacity: 200 Gallons

Accommodations

Total Cabins: 2

Hull and Deck Information

Hull Material: Fiberglass

Engine Information

Engines: 2

Manufacturer: Mercruiser

Model: 350 MPI

Engine Type: Inboard

Fuel Type: Gas/Petrol

DETAILED INFORMATION

Electronics

- Compass
- Radar-Garmin
- VHF- Garmin
- ACR Search Light
- TV set
- Plotter - Garmin
- Cockpit Speakers
- Depth-sounder - Garmin
- Bose Stereo with 6 speakers
- GPS- Garmin

Inside Equipment

- Battery Charger
- Microwave Oven
- Air Conditioning
- Bow Thruster
- Stern Thruster
- Electric Head
- Electric Bilge Pump
- Heating
- Hot Water

Electrical Equipment

- Generator- Westerbek 6.5 KW 65 HRS
- Shore power inlet
- Electrical Circuit: 110V

Exclusions

Owner's personal belongings.

Disclaimer

The Company offers the details of this vessel or yacht in good faith but cannot guarantee or warrant the accuracy of this information nor warrant the condition of the vessel. A buyer should instruct his representatives, agents, or his surveyors, to investigate such details as the buyer desires validated. This vessel or yacht is offered subject to prior sale, price change, or withdrawal without notice.

PHOTOS

Photo_1080295457_DJI_33_jpg_4370256_0_2021413112122_photo_original Photo_1080295458_DJI_34_jpg_4400303_0_2021413112140_photo_o
Edit



Photo_1080295459_DJI_35_jpg_4478868_0_2021413112146_photo_original Photo_1080295460_DJI_36_jpg_4598794_0_2021413112232_photo_o



Photo_1080295464_DJI_40_jpg_4746327_0_202141311250_photo_original- Photo_1080295466_DJI_42_jpg_4480407_0_2021413112550_photo_or
Edit Edit



731A0789

731A0792



731A0794

731A0796



731A0798



731A0803



731A0805



731A0809



731A0815



731A0817



731A0818



731A0819



731A0820



731A0821



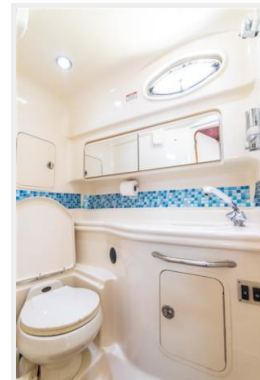
731A0822



731A0824



731A0829



731A0826



Photo_1080295467_DJI_43_jpg_4484334_0_2021413112558_photo_original-Edit

731A0831



Photo_1080295468_DJI_44_jpg_4474751_0_2021413112614_photo_original-Edit

Photo_1080295470_DJI_46_jpg_4273803_0_2021413112644_photo_c



Photo_1080295472_DJI_48_jpg_4464437_0_202141311274_photo_original Photo_1080295473_DJI_49_jpg_4635540_0_2021413112744_photo_ori
Edit



731A0789



731A0792



731A0794



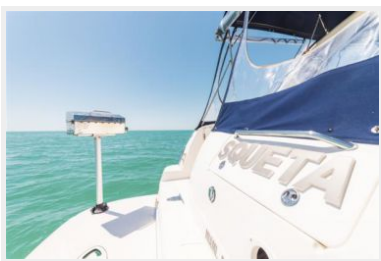
731A0796



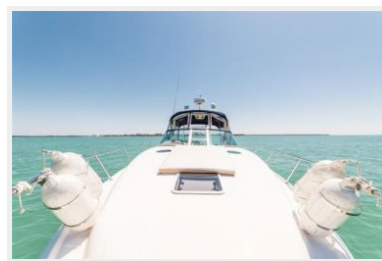
731A0798



731A0803



731A0805



731A0809



731A0815



731A0817



731A0818



731A0819



731A0820



731A0821



731A0822



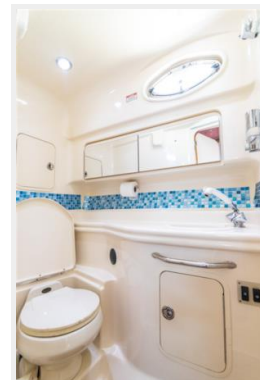
731A0824



731A0826



731A0829



731A0831



CONTACTS

Andrey Shestakov, leading yacht broker of the sales department of Shestakov Yacht Sales Inc. Shestakov Yacht Sales Inc., the official representative of the Miami/Fort Lauderdale FL headquarters.

Contact details

Email:
andrey@shestakovyachtsales.com

Web: shestakovyachtsales.com/en/

Telephones

USA: +1(954)274-4435

Office hours

Monday – Saturday: 9:00 - 21:00 EDT

Sunday: closed

Address



Harbour Towne Marina, 850 NE 3rd St,
STE 213, Dania, FL 33004