

ALEGRIA — BENETTI



Builder: BENETTI

Year Built: 2010

Model: Motor Yacht

Price: PRICE ON APPLICATION

Location: United States

LOA: 143' 1" (43.60m)

Beam: 30' 5" (9.26m)

Min Draft: 8' 8" (2.63m)

Max Draft: 9' 1" (2.76m)

Cruise Speed: 12 Kts. (14 MPH)

Max Speed: 15 Kts. (17 MPH)

Our experienced yacht broker, Andrey Shestakov, will help you choose and buy a yacht that best suits your needs **ALEGRIA — BENETTI** from our catalogue. Presently, at Shestakov Yacht Sales Inc., we have a wide variety of yachts available on our sale's list. We also work in close contact with all the big yacht manufacturers from all over the world.

If you would like to buy a yacht **ALEGRIA — BENETTI** or would like help answering any questions concerning purchasing, selling or chartering a yacht, please call **+1(954)274-4435**

TABLE OF CONTENTS

TABLE OF CONTENTS	2
SPECIFICATIONS	5
Overview	5
Basic Information	5
Dimensions	5
Speed, Capacities and Weight	6
Accommodations	6
Hull and Deck Information	6
Engine Information	6
DETAILED INFORMATION	7
Accommodations	7
Aft Deck	7
Salon	7
Master Stateroom	7
VIP Stateroom 1	8
VIP Stateroom 2	8
Guest Stateroom 1	8
Guest Stateroom 2	8
Skylounge	8
Sundeck	9
Pilothouse	9
Galley	9
Wet Bars	10
Laundry Room	10
Boat Highlights	10
Audio & Visual Equipment	10
Engineer Room	11
Electronics	11

Garage	12
Tenders	12
Water Sports	12
Galley	13
Captains Quarters	13
Crew Lounge	14
Crew Cabins	14
Exclusions	14
Exclusions	14
Disclaimer	15
PHOTOS	16
Owner Stateroom 11_14_20_0097 (1)	16
11_15_20_0740 (1)	16
11_14_20_0083 (1)	16
Main Salon 11_14_20_0009 (2)	16
Main Salon Bar 11_14_20_0016 (1)	16
VIP Port VIP Port 11_14_20_0207	16
11_14_20_0259 (1)	17
VIP Starboard 11_14_20_0238 (2)	17
VIP Bath 11_14_20_0255 (1)	17
Twin Starboard 11_14_20_0165 (2)	17
Sundeck Fwd Lounge 11_15_20_0490 (1)	17
Sundeck Dining Table 11_15_20_0368	17
Main Dining Bridge Deck 11_14_20_0307 (1)	18
Main Dining Bridge Deck 11_15_20_0868 (1)	18
Sun Deck Jetted Pool 11_15_20_0619	18
Aft Main Deck Dining 11_15_20_1048 (1)	18
Sky Lounge Game Table 11_15_20_V_0064-2	18
Sky Lounge Bar 11_15_20_V_0074-3	18

2016 Boston Whaler Tender 11_15_20_0764	19
Bridge 11_15_20_V_0078-2	19
Port side-aft profile 11_15_20_0058	19
CONTACTS	20
Contact details	20
Telephones	20
Office hours	20
Address	20

SPECIFICATIONS

Overview

Exquisite Benetti 145 Vision with gorgeous traditional interior. ALEGRIA will be the next Benetti Vision to sell. Big volume 43 meter full displacement motor yacht. Zero Speed Stabilizers. All systems have been continually serviced and maintained. Expansive Sundeck. Spacious Owner Suite with 180 degree view forward on the main deck. Separate His & Her Owner bathrooms with heated floors. Owner Office. Private Owner outdoor lounge area with table and separate private sunbed. Three Bars; 1 Main Deck, 1 Sky Lounge, 1 Sun Deck. Main Dining on Sky Deck Aft with glass doors that open 270 degrees. Outdoor dining on the Sun Deck and Main Deck Aft. Four Guest Staterooms for up to 10 guests and all guest bathrooms have heated floors. Garage to keep all the water toys. Wave Runners, Scuba Gear, Bicycles, Clear Acrylic Kayak. (Boston Whaler 28 Outrage T/T available but not included in the asking price.) Numerous interior and exterior areas for relaxing, entertaining and dining. Huge Jacuzzi Spa Tub for 8 - 10 people on the Sun Deck. Crew accommodations for 11 - 12. Only two owners have owned ALEGRIA and she deserves your consideration if you want a well appointed trans-Atlantic large volume pedigree motor yacht.

Basic Information

Category: Motor Yacht

Sub Category: Mega Yacht

Model Year: 2010

Year Built: 2010

Country: United States

Fly Bridge: Yes

Dimensions

LOA: 143' 1" (43.60m)

Beam: 30' 5" (9.26m)

Min Draft: 8' 8" (2.63m)

Max Draft: 9' 1" (2.76m)

Speed, Capacities and Weight

Cruise Speed: 12 Kts. (14 MPH)

Cruise Speed Range: 3000

Max Speed: 15 Kts. (17 MPH)

Max Speed Range: 2500 Kts.

Displacement: 299828.67632 Pounds

Gross Tonnage: 456 Pounds

Water Capacity: 2483.2172888 Gallons

Holding Tank: 779.3075534 Gallons

Fuel Capacity: 15414.4392342 Gallons

Accommodations

Total Cabins: 5

Total Berths: 9

Sleeps: 12

Total Heads: 7

Crew Cabin: 4

Crew Berths: 8

Crew Sleeps: 9

Crew Heads: 5

Hull and Deck Information

Hull Material: GRP

Deck Material: Teak over Fiberglass

Hull Configuration: Full Displacement

Hull Color: White

Hull Designer: Benetti

Exterior Designer: Stefano Righini

Interior Designer: Francois Zuretti

Engine Information

Engines: 2

Manufacturer: Caterpillar

Model: C32 ACERT

Engine Type: Inboard

Fuel Type: Diesel

DETAILED INFORMATION

Accommodations

ALEGRIA is Hull BV014 of the highly acclaimed Benetti Vision series. Owner and guest accommodations are designed for twelve in five ensuite staterooms. The owner's suite is on the main deck forward with 180 degree view with a forward door to a private exterior lounge and sunbed area. There is his and her separate bathrooms finished in Italian marble, large walk-thru wardrobe, second walk in wardrobe, entertainment system, king sized bed, private office, and numerous storage areas.

The lower accommodation deck is accessed by the central staircase where you will encounter four staterooms for guests. Aft of the lower staircase lobby to port and starboard are identical VIP suites with queen sized beds, entertainment systems, large port lights for natural lighting, and bathrooms finished in beautiful Italian marble. Forward of the lower staircase lobby to port and starboard are identical twin bed suites, each with a pullman bed, entertainment systems, bathrooms finished in wonderful Italian marble and large port lights for natural lighting.

Aft Deck

ALEGRIA has teak covered staircases leading up from the large swim platform to the aft deck area where there is a built in seating lounge, table, and loose chairs to accommodate up to 12 for dining and relaxing. Wide side decks port and starboard lead forward where there are staircases to access the bridge and fore deck area. Also there is a staircase from the aft deck leading directly to the bridge deck area aft.

Salon

Main Salon can be entered from the aft deck by stainless steel framed glass doors that open electrically. Open entering you will notice the L-shaped bar with stools to starboard, moving forward is a the main seating area with comfortable leather sofas, coffee table, and side tables . Forward is a center line credenza between the main seating area and the A/V entertainment area with large TV, occasional chairs and table. On the forward port side of the entertainment area is the entrance to the pantry and commercial grade galley. On the forward starboard side moving forward is the guest foyer with side entrance door, main staircase leading down to the guest accommodations and leading up to the Sky Lounge. Moving forward on the main deck is where you will find powder room/day head and beyond is the entrance to the owner suite.

Master Stateroom

Entrance to the Owner Suite is forward on the main deck starboard side. Upon entering you will be in the private office with deck, chairs, book shelves, storage cabinet and large TV. Moving forward from the office you enter the main bedroom suite. To starboard is a complete bathroom with shower and to port is another bathroom with jetted bathtub and both have heated marble floors. There is a large walk through wardrobe connecting the two owner bathrooms. Entering the owner bedroom area you immediately notice the 180 degree windows facing forward and the king size bed facing in the same direction. To starboard is a built in vanity/desk and to port is a built-in leather settee. TV is on a lift that ascends and descends into a cabinet. Numerous drawers and cabinets for storage of clothing and other personal items. There is a center line water tight door forward that leads to the owner's private outdoor lounge with a semi-circular settee to starboard and a large sunbed to port.

VIP Stateroom 1

Returning aft from the owner's stateroom we descend the central staircase to the accommodation deck. We are now in the lower guest accommodation foyer. Looking starboard side aft is VIP suite #1. There is a queen size bed, night tables, A/V entertainment system, bathroom with shower done in marble with heated marble floors, and large port lights.

VIP Stateroom 2

Port side aft of the lower accommodation deck foyer is VIP suite #2 which is a mirror image of VIP #1.

Guest Stateroom 1

Forward starboard side of the lower guest accommodation foyer is Guest Suite #1. There are two twin sized beds, night stands and upper pullman bed, full bathroom with shower finished in Italian marble, heated marble floors, an A/V system and large port lights.

Guest Stateroom 2

Forward of the lower guest accommodation foyer to the port side is Guest suite #2. This is a mirror image of Guest site #1.

Skylounge

From the lower guest accommodation deck we ascend the main staircase to the bridge deck. Once on the bridge deck on the port side you will find the powder room/day head. Moving further aft is the Sky lounge bar and pantry, to port is a game table with chairs, built in book case and storage cabinets and to starboard is a leather sofa and A/V system. Moving further aft is the main

dining table with glass doors that completely open 270 degrees to the outside. This is one of many clever design features. Most yacht owners and guests find the aft bridge deck dining table is the area where most meals are served. Designing this area so it can be an open or closed for dining this area can be used no matter what the weather is doing. Too hot, too cold, or perfect outside temperature. Sunny and clear or cloudy and rain does not matter, the main dining area can always be enjoyed by owners and guests. The round dining table is capable of seating up to twelve people in comfort. Outside aft is a built in settee with tables for relaxing, enjoying the weather, sea air and view while sipping your favorite beverage. There is a staircase aft on the port side that descends to the aft main deck area. Port and Starboard are side decks that lead to the wheelhouse, on to the Portuguese bridge and access to the bow area.

Sundeck

The Sundeck is accessed by an exterior staircase on the aft starboard side of the bridge deck. Ascending the staircase to the Sundeck everyone immediately notice the expansive size of the deck. The aft section is the the large jetted pool that can comfortably seat 8 adults. There is a semi-circle of sunbeds on the aft side of the pool. Forward is the sundeck dining table and beyond this is the sundeck bar and further forward is a forward facing settee and cocktail tables. There are two large umbrellas, one fore and one aft plus a canopy over the dining table. There is a exercise treadmill, exercise pads and free weights. This is a wonderful spacious area for the owners and guests to enjoy the sea and the sun and ideal for entertaining and lounging.

Pilothouse

The pilothouse is forward on the bridge deck and can be entered forward of the central interior staircase, or from port & starboard water tight doors. Outside of the pilothouse there are port and starboard wing stations the captain can use for docking. The pilot house has everything the captain needs in navigational aides as well as monitoring all the ship's systems with redundancy in many of these systems and navigational aides. The interior is all finished in dark colors to reduce glare during nighttime voyages. There is also a built-n elevated settee with a table for guests to sit and observe.

Galley

The main ship's Galley is on the main deck port side mid-ship. The galley is entered from the main salon / entertainment area or from an exterior port side door. Upon entering the galley from the main salon area you will be in the serving pantry where their is a staircase leading up to the pantry on the bridge deck forward of the sky lounge bar. There is a dumbwaiter that travels from the main deck serving pantry to the sky lounge pantry, to the sundeck bar. Forward of the main deck serving pantry is the commercial grade galley equipped with all the necessary appliances and kitchen equipment for the chef to prepare any meal the owners and guests desire. There is another staircase that descends to the crew area.

Wet Bars

Sinks (All Bars)

Hoshizuki Ice Maker (Sundeck & Main Salon Bars)

Scotsman Ice Maker (Sky Lounge Bar)

Isotherm Refrigerator (All Bars)

Miele Microwave (Sky Lounge Pantry)

Crew Call Touch Pad (Sky Lounge Pantry)

Laundry Room

From the crew area there is another staircase that descends to the laundry room and cold storage room. There is also a passageway that goes aft to the engine room.

Miele Commercial Clothes Washer (x2)

Miele Commercial Clothes Dryer (x2)

Boat Highlights

Accommodations for up to twelve people for the owner and guests in five en-suite staterooms. Large swim platform and garage that can be utilized as a beach club while using the abundant water toys stored inside. Crew accommodations for 9 - 10 members to properly service owners, guests and maintain the yacht in A-1 condition. Numerous exterior and interior areas for owner and guests spread across four decks. Unique main dining room design on the bridge deck. Large owner suite with private deck area forward and separate his and her bathrooms. Expansive sundeck area for dining, enjoying a cocktail at the bar, lounging, sunbathing or relaxing in the large jetted pool. Zero Speed fin stabilizers while at anchor or underway. Full displacement hull and for smooth and economical transits with trans-Atlantic range. All ships systems consistently maintained by a knowledgeable crew and a caring owner.

Audio & Visual Equipment

Crestron & Apple TV pack

Denon A/V Receiver-Amplifier (Sky Lounge, Main Salon, Owner Suite)

Denon DVD Player (Sky Lounge, Main Salon, Owner Suite)

Martin Ranger Karaoke Player (Sky Lounge)

Direct TV Recievers (Sky Loinge, Main Salon, Owner & Guest Suites, Captain Cabin, Crew Mess)

Panasonic 48" TV & DVD - Main Salon

Samsung 32" LCD TV & DVD - Sky Lounge

Samsung 32" LCD TV & DVD - Owner Suite

Samsung 32" LCD TV & DVD - Owner Office

Samsung 23" LCD TV & DVD - All Guest Suites

Samsung 23" LCD TV & DVD - Captain Cabin

Samsung 23" LCD TV & DVD - Crew Mess

Clarion CD Player - Each Crew Cabin & Sun Deck

Ipod Docking Stations - Various areas of the yacht

Numerous Speakers throughout for enjoying the A/V system of choice

Engineer Room

Engineer Room is air conditioned with monitors for all ship's systems and overlooks the engine room.

Electronics

Furuno FR2117 X-Band Radar (x2)

Navigat X MK 1 Gyro Compass

Jupiter Magnetic Compass

Rudder Angle Indicator

Sperry Marine ES5100 Echo Sounder

Furuno F130 Wind Speed Indicator

Sperry Marine Navipilot 4000

Saab R4 GPS

Maxsea ECDIS Marine Nav Plotter PC System

Furuno FS 1570 SSB

Sailor RT 5022 VHF with repeater in crew mess

Sailor C 4091 VHF

Panasonic TDA 100 PABX

Iridium SAT Phone

Barometer, Clock, Thermometer

Garage

Watersport area where the Waverunners, bicycles, dive gear, etc. are stored. When the large aft garage door is open the area is used as a beach club for easy access to the sea.

Tenders

Walker Bay RIB 430 w/Mercury 60hp ELPT 4S

Water Sports

Yamaha VX Deluxe

Yamaha Super Jet

Kayak for Two (Clear Acrylic)

River Run Inflatable Lounger (x2)

Airhead Tube for Two

Wakeboard

Dive Oxygen Tanks (x6)

Dive Masks (x2)

Regulators (x4)

BCD (x4)

Wet Suits (x8)

Dive Flippers (x16)

Dive Boots (x2)

Snorkel Gear (x3)

Snorkel Mask (x4)

Noodles (x10)

Volleyball, Soccer Ball & Football

Bicycles (x3)

Galley

Miele Refrigerator

Miele Freezer

Miele Dishwasher

Bosch Induction Cooktop

Miele Induction Oven (Large)

Miele Induction Oven (Medium)

Miele Microwave

Hoshizuki Ice Maker

Wine Chiller

Large Chest Freezer in Garage

Walk in Cold Room off the Laundry Room

Captains Quarters

Captains Quarters are starboard side of the bridge deck and aft of the pilothouse with a queen size bed, bathroom and shower, and A/V entertainment system.

Crew Lounge

Crew Lounge is accessed by descending the staircase from the ship's main galley. To port is the crew galley and to starboard is a J-shaped lounge for crew meals and relaxing. Moving forward are four crew cabins each with over under berths to accommodate up to eight crew members and crew bathrooms with showers.

Large L-Shaped Lounge & Table

Microwave

Refrigerator

T.V.

Crew Cabins

Crew Cabins consist of Five double berth cabins and four heads for up to 10 crew members.

Exclusions

White Chest & Contents in Sky Lounge

Miro Engraving in Main Salon

Personal Items

Wine and Liquor

1 New Dive Set

1 New Stand-up Paddle Board

All Fishing Gear

Teak Chest for Shoes

ALEGRIA Dock Mat

ALEGRIA name reserved

Exclusions

Owner's personal belongings.

Disclaimer

The Company offers the details of this vessel or yacht in good faith but cannot guarantee or warrant the accuracy of this information nor warrant the condition of the vessel. A buyer should instruct his representatives, agents, or his surveyors, to investigate such details as the buyer desires validated. This vessel or yacht is offered subject to prior sale, price change, or withdrawal without notice.

PHOTOS

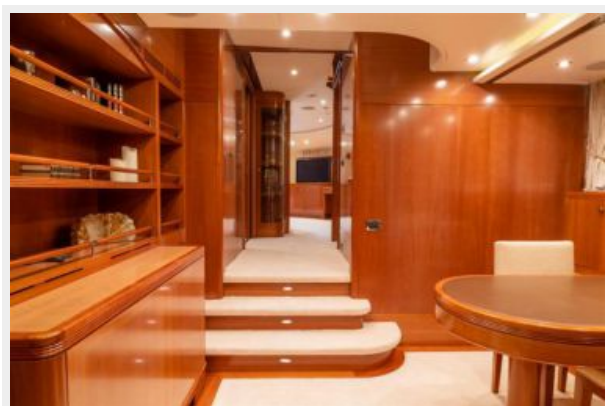
Owner Stateroom 11_14_20_0097 (1)



11_15_20_0740 (1)



11_14_20_0083 (1)



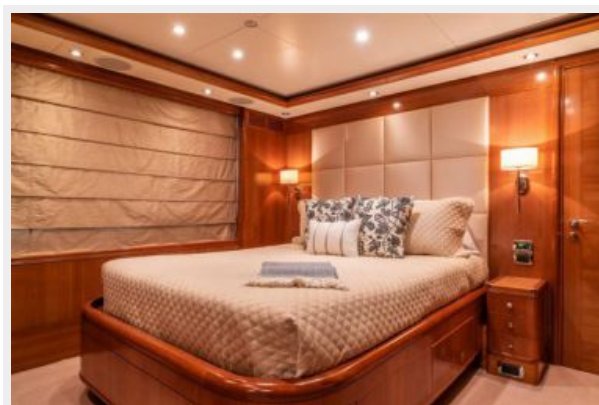
Main Salon 11_14_20_0009 (2)



Main Salon Bar 11_14_20_0016 (1)



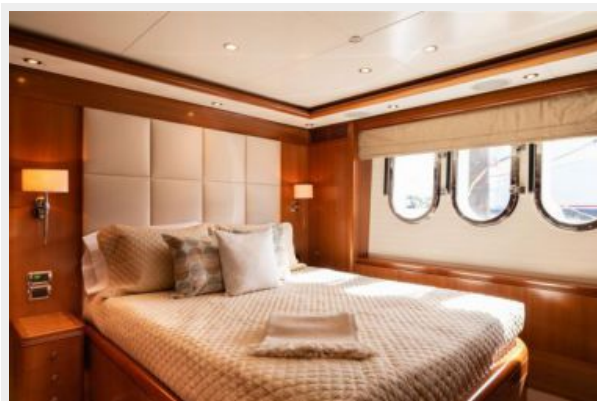
VIP Port VIP Port11_14_20_0207



11_14_20_0259 (1)



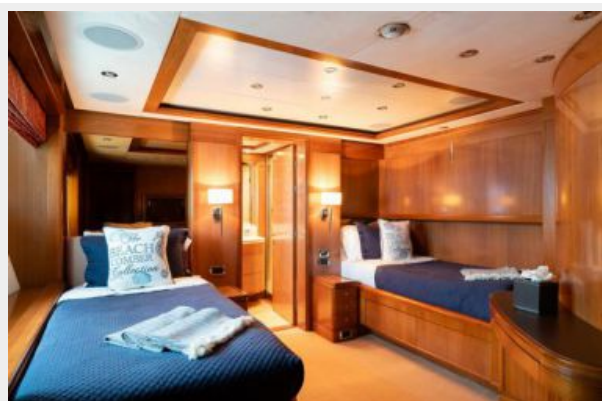
VIP Starboard 11_14_20_0238 (2)



VIP Bath 11_14_20_0255 (1)



Twin Starboard 11_14_20_0165 (2)



Sundeck Fwd Lounge 11_15_20_0490 (1)



Sundeck Dining Table 11_15_20_0368



Main Dining Bridge Deck 11_14_20_0307 (1) Main Dining Bridge Deck 11_15_20_0868 (1)**Sun Deck Jetted Pool 11_15_20_0619****Sky Lounge Game Table 11_15_20_V_0064-2****Sky Lounge Bar 11_15_20_V_0074-3**

Bridge 11_15_20_V_0078-2



2016 Boston Whaler Tender 11_15_20_0764



Port side-aft profile 11_15_20_0058



CONTACTS

Andrey Shestakov, leading yacht broker of the sales department of Shestakov Yacht Sales Inc. Shestakov Yacht Sales Inc., the official representative of the Miami/Fort Lauderdale FL headquarters.

Contact details

Email: **andrey@shestakovyachtsales.com**

Web: shestakovyachtsales.com/en/

Telephones

USA: **+1(954)274-4435**

Office hours

Monday – Saturday: **9:00 - 21:00 EDT**

Sunday: **closed**

Address



Harbour Towne Marina, 850 NE 3rd St,
STE 213, Dania, FL 33004