

BLUE WATER — GRAND BANKS



Судостроитель: GRAND BANKS

Год постройки: 1988

Модель: Trawler Yacht

Цена: ЦЕНА ЯХТЫ ПО ЗАПРОСУ

Местонахождение: United States

Длина общая: 42' 0" (12.80m)

Ширина: 13' 7" (4.14m)

Макс. осадка: 4' 2" (1.27m)

Крейс. скорость: 9 Kts. (10 MPH)

Макс. скорость: 12 Kts. (14 MPH)

Купить Blue Water — GRAND BANKS а также выбрать подходящую вам яхту из нашего каталога яхт вам поможет опытный яхтенный брокер Андрей Шестаков. На сегодняшний день компания Shestakov Yacht Sales Inc. имеет большое количество яхт в собственном списке продаж, а также тесно сотрудничает со всеми крупными яхтенными производителями по всему миру.

Для того чтобы купить яхту Blue Water — GRAND BANKS а также проконсультироваться по любому вопросу связанному с покупкой, продажей, чартером яхт позвоните по телефону **+7(918)465-66-44**.

ОГЛАВЛЕНИЕ

ОГЛАВЛЕНИЕ	2
ХАРАКТЕРИСТИКИ	5
Обзор	5
Основная информация	5
Размеры	5
Скорость, вместимость и масса	5
Размещение	5
Корпус и палуба	5
Информация о двигателе	6
ПОДРОБНОЕ ОПИСАНИЕ	7
MAIN DESCRIPTION	7
WALKTHROUGH	7
Electronics	8
EQUIPMENT	8
PLUMBING	8
Engine Room and Mechanical Equipment	8
ELECTRICAL	9
DISCLAIMER	9
Исключения	9
Отказ от ответственности	9
ФОТОГРАФИИ	11
P 001	11
P 002	11
P 003	11
P 004	11
P 005	12
P 006	12
P 007	12

P 008	12
P 009	13
P 010	13
P 011	13
P 012	13
P 101	13
P 102	13
P 103	14
P 104	14
P 105	14
P 106	14
P 107	14
P 108	14
P 109	15
P 201	15
P 202	15
P 203	15
P 204	15
P 205	15
P 206	16
P 207	16
P 208	16
P 209	16
P 210	17
P 211	17
P 212	17
P 213	17
P 214	18
P 301	18

P 304	18
P 302	18
P 305	19
P 306	19
P 307	19
P 308	19
P 401	20
P 405	20
P 406	20
P 407	20
P 900	21
P 901	21
P 902	21
P 903	21
P 904	21
P 905	21
КОНТАКТЫ	22
Контактная информация	22
Телефоны	22
Время работы	22
Адрес	22

ХАРАКТЕРИСТИКИ

Обзор

Well kept, clean vessel. Just the ticket to comfortable easing cruising no matter where you are headed. She is equipped for serious long range cruising and long term live aboard in comfort. Whether you are doing the loop or cruising the Caribbean, this could be the vessel for you.
Naiad stabilizers

Основная информация

Тип судна: Trawler Yacht

Модельный год: 1988

Год постройки: 1988

Страна: United States

Размеры

Длина общая: 42' 0" (12.80m)

Ширина: 13' 7" (4.14m)

Макс. осадка: 4' 2" (1.27m)

Скорость, вместимость и масса

Крейс. скорость: 9 Kts. (10 MPH)

Макс. скорость: 12 Kts. (14 MPH)

Вместимость воды: 270 Gallons

Вместимость сточного бака: 32 Gallons

Объем топливного бака: 570 Gallons

Размещение

Всего кают: 1

Всего ком. состава: 1

Корпус и палуба

Материал корпуса: Fiberglass

Информация о двигателе

Двигатели: 2

Производитель: Cummins

Модель: 6BT5.9M

Тип двигателя: Inboard

Тип топлива: Diesel

ПОДРОБНОЕ ОПИСАНИЕ

MAIN DESCRIPTION

Well kept, clean vessel. Just the ticket to comfortable easing cruising no matter where you are headed. She is equipped for serious long range cruising and long term live aboard in comfort. Whether you are doing the loop or cruising the Caribbean, this could be the vessel for you. Naiad stabilizers

WALKTHROUGH

Starting forward is a wide double V-berth and a 36-inch wide hanging locker to port and ample drawer storage. Ventilation is from an overhead hatch and two opening ports. The forward guest head with lavatory and shower are immediately adjacent to starboard with a door to the main saloon. Moving aft and up three steps brings you into the expansive main salon surrounded by large opening windows with access doors port and starboard for excellent ventilation and natural light. Forward to port is the galley, which includes a teak-faced holding plate refrigerator and separate freezer, custom Corian countertops and sink, the optional teak Grand Banks drop-down dish storage above the gallery, built-in microwave oven, and three-burner propane range with oven and solenoid valve to close propane tanks at the source. (2 10 lb. aluminum propane tanks beneath flying bridge settee) Opposite and to starboard is the lower steering station which also houses electrical panels for 12 volt and 110 volt service. The Grand Banks helm seat to starboard is a perfect spot for making passages in bad weather. Aft of the helm seat is a dry bar with lots of storage and built-in icemaker beneath. Slightly farther aft on the starboard side is an L-shaped settee and oval dining table with fold down leaves and storage below. Moving aft and won three steps is the master cabin with a queen-sized island bed, surrounded by discrete low-level night lighting. Forward of the bed is a large 31-inch wide hanging closet with two louvered teak doors. In the aft port corner of the master stateroom is a small desk. The stateroom has more than eight lineal feet of custom built-in bookcases. In addition, the master stateroom has a total of 14 drawers, including a 30 x 42 inch drawer for chart storage. To port is the enclosed head with an electric head (flushable with either fresh or salt water), lavatory, large mirror and ample stowage. To starboard is a walk-in shower and the storage compartment inside the shower area hides a 150 gallon per day Village Marine Tee Little Wonder watermaker. The engine room has 4 ft. 2 in. of headroom and can be accessed from the salon or from the v-berth area. The flybridge access is from the port side, a easy few steps from the port side door. The flybridge can easily seat 12. The flybridge is covered by a navy blue Sunbrella bimini with extends all the way back to the mast. The deck and flybridge areas are trimmed in navy blue Sunbrella, including weather cloths and the boat has full navy blue Sunbrella covers, including varnish covers for all varnished rails. The mast on the flying bridge has a fold-down steps to allow easy access to the mast tope for changing bulbs and other maintenance.

Electronics

- 2 Raymarine E120
- Autopilot Autohelm
- Furuno GPS
- VHF
- Icom M735 single side band
- Datamarine Dart 2000 (depth, speed, log, temp) display
- EPIRB

EQUIPMENT

- Lofran anchor Windlass with 30 ft. of chain
- 35 CQR
- 20 Fortress
- Naiad Stabilizers
- 2 Air conditioning units
- 150 gallon per day Village Marine Tee Little Wonder water maker
- Davit Crane
- Spur Line Cutters on both shafts
- Freshwater wash down fore and aft

PLUMBING

- Galley Maid toilet (aft head) 12v, fresh or salt flushing
- Groco K model manual head (forward head)
- Jabsco macerator pump
- Deck pump out fitting
- (2) rule 12-volt bilge pumps
- Fuel management manifolds
- Automatic Halon Fireboy system (engine room)
- Engine oil and temperature alarms
- (3) 90-gal aluminum water tanks
- 32-gal holding tank
- Groco 12-volt oil change system and manifold
- Raritan 12-gal water heater with heat exchanger
- (4) aluminum fuel tanks (new in 1999)

Engine Room and Mechanical Equipment

- (2) Cummins 210 hp model 6BT5.9 diesel engines

- (2) Twin Disc transmissions MG 506-1
- (2) Walker Airseps
- (2) Purefiner FT-24 external oil filter systems
- (2) Racor 900 FG filters
- Vacuum gauges on Racor filters
- Glendinning twin-engine synchronizer
- Naiad model 173 hydraulic active anti-roll stabilizers
- Full engine instruments at both stations
- Fireboy Halon automatic fire extinguishing system
- Par 4-inch continuous duty engine room exhaust blowers
- Northern Lights 6 kw model 673 generator (4150 hrs.)
- Purefiner TF-8 oil filter for generator
- Racor 200 FGM filter for generator
- Fuel polishing/transfer system with Racor 900 FG filter
- Morse "S" model 31001 controls at both stations

ELECTRICAL

- Heart Interface Marine 2500 watt inverter 1 130 amp battery charger
- Heart Interface Link Freedom remote control panel
- All batteries replaced in 2020 (2 engine starting batteries, 4 house batteries)
- Green wire bonding system
- 50-ft. Marincor 50 amp shore power cord
- Professional Mariner Zinc Saver II Galvanic isolator
- Blue Seas 12 volt digital battery monitor

DISCLAIMER

The Company offers the details of this vessel in good faith but cannot guarantee or warrant the accuracy of this information nor warrant the condition of the vessel. A buyer should instruct his agents, or his surveyors, to investigate such details as the buyer desires validated. This vessel is offered subject to prior sale, price change, or withdrawal without notice.

Исключения

При продаже яхты исключаются личные вещи владельца.

Отказ от ответственности

Компания предоставляет описание судна или яхты добросовестно, но не может гарантировать точность этой информации, а также не ручается за техническое

состояние. Покупатель должен проинструктировать своих агентов или оценщиков исследовать представленную информацию более подробно, по собственному желанию. Продажа судна или яхты, изменение цены или снятие с продажи будет происходить без предварительного уведомления.

ФОТОГРАФИИ

P 001



P 002



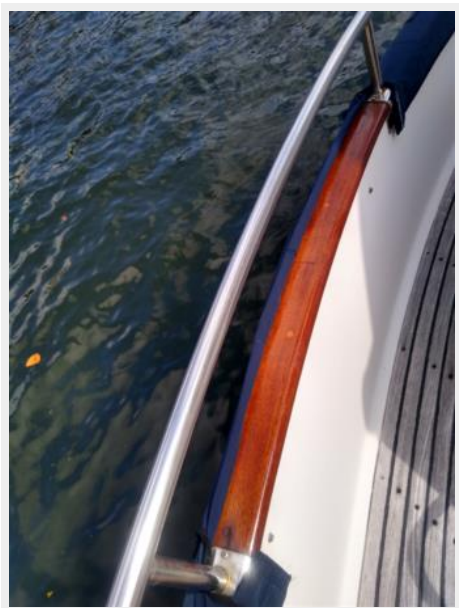
P 003



P 004



P 005



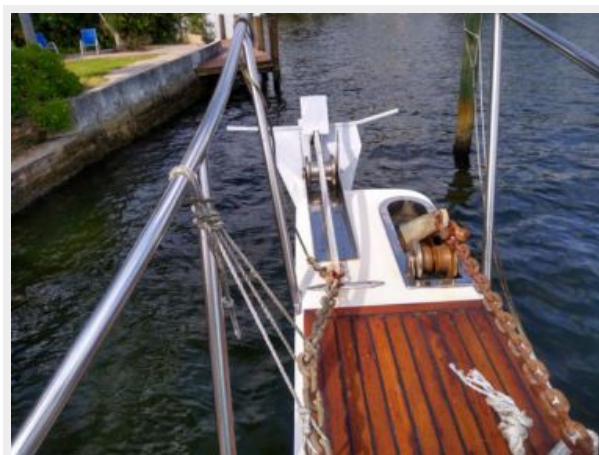
P 006



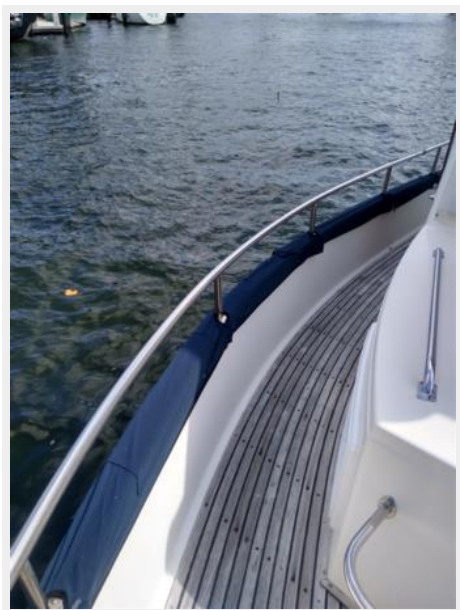
P 007



P 008



P 009



P 010



P 011



P 012



P 101



P 102



P 103



P 104



P 105



P 106



P 107



P 108



P 109



P 201



P 202



P 203



P 204



P 205



P 206



P 207



P 208



P 209



P 210



P 211



P 212



P 213



P 214



P 301



P 304



P 302



P 305



P 306



P 307



P 308



P 401



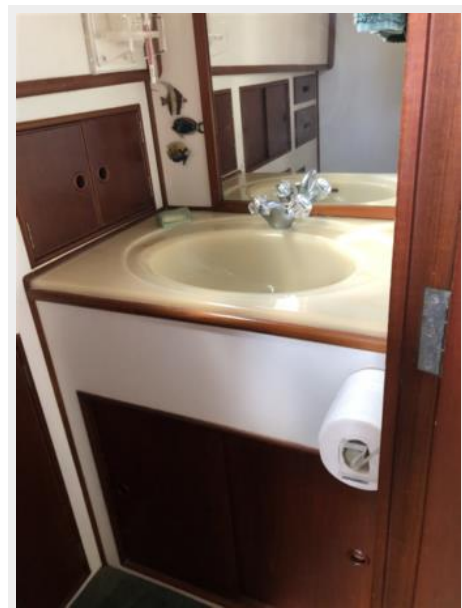
P 405



P 406



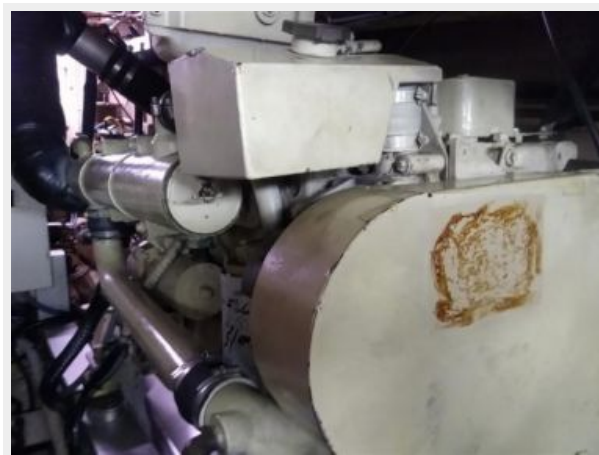
P 407



P 900



P 901



P 902



P 903



P 904



P 905



КОНТАКТЫ

Андрей Шестаков (Andrey Shestakov) – ведущий яхтенный брокер отдела продаж яхт и судов компании Shestakov Yacht Sales Inc. Официальный представитель Shestakov Yacht Sales Inc. для русскоговорящих клиентов в центральном офисе компании в Майами/Форт Лодердейл/Флорида/США.

Контактная информация

Email: andrey@shestakovyachtsales.com

Web: shestakovyachtsales.com

Телефоны

Краснодарский край: **+7(918)465-66-44**

США, Майами, Флорида: **+1(954)274-4435**

Время работы

Понедельник – Суббота: **9:00 - 21:00**
EDT

Воскресенье: **Закрито**

Адрес



Harbour Towne Marina, 850 NE 3rd St,
STE 213, Dania, FL 33004