

## OUTTA HERE — VIKING



**Builder:** VIKING

**Year Built:** 1998

**Model:** Sport Yacht

**Price:** PRICE ON APPLICATION

**Location:** United States

**LOA:** 47' 0" (14.33m)

**Beam:** 15' 6" (4.72m)

**Min Draft:** 4' 5" (1.35m)

Our experienced yacht broker, Andrey Shestakov, will help you choose and buy a yacht that best suits your needs **Outta Here — VIKING** from our catalogue. Presently, at Shestakov Yacht Sales Inc., we have a wide variety of yachts available on our sale's list. We also work in close contact with all the big yacht manufacturers from all over the world.

If you would like to buy a yacht **Outta Here — VIKING** or would like help answering any questions concerning purchasing, selling or chartering a yacht, please call **+1(954)274-4435**

# TABLE OF CONTENTS

TABLE OF CONTENTS	2
SPECIFICATIONS	5
Basic Information	5
Dimensions	5
Speed, Capacities and Weight	5
Accommodations	5
Hull and Deck Information	5
Engine Information	6
DETAILED INFORMATION	7
Accommodations	7
Electronics and Navigation	7
Cockpit/Flybridge/Foredeck	8
Engines	8
Exclusions	8
Exclusions	8
Disclaimer	9
PHOTOS	10
AFT PORT SIDE	10
AFT STB SIDE	10
AFT VIEW	10
COCKPIT 2	10
FIGHTING CHAIR	11
COCKPIT LOOKING AFT	11
COCKPIT 4	11
COLD PLATE COOLER	11
COOLER	12
DASH	12
ELECTRONICS	12

---

EPIRB	12
FB SEATING 3	13
FB SEATING 2	13
FB SEATING 4	13
FB SEATING 5	13
FISHBOX	14
FB SEATING	14
FOREDECK	14
FENDER HOLDERS	14
GARMINs	15
INSTRUMENT PANEL	15
HELM STORAGE	15
STORAGE UNDER HELM	15
INSTRUMENTS 2	15
INSTRUMENTS 1	15
LOWER HELM	16
LOW PROFILE DAVIT	16
WINDLASS	16
TACKLE DRAWS	16
SALON ENTRY	17
DINING 1	17
SALON 2	17
DINING 2	17
SALON STB AFT	17
SALON 1	17
SALON 5	18
SALON 3	18
GALLEY 1	18
SALON 4	18

---

GALLEY 2	19
COMPANIONWAY	19
MASTER SR	19
MASTER SR STB SIDE	19
MASTER HEAD 2	20
MASTER SR PORT SIDE	20
MASTER HEAD 1	20
MASTER HEAD 3	20
GUEST BUNKS 2	21
GUEST BUNKS	21
GUEST SR CLOSET	21
MASTER SR CLOSET	21
GUEST_DAY HEAD SINK	21
GUEST_DAY HEAD	21
MASTER CLOSET CEDAR LINED	22
WASHER_DRYER	22
15KW GEN	22
BATTERY CHARGERS	22
DC PANEL	22
STB ENG	22
PORT ENGINE	23
PORT ENG	23
STB ENGINE	23
CONTACTS	24
Contact details	24
Telephones	24
Office hours	24
Address	24

---

# SPECIFICATIONS

---

## Basic Information

---

**Category:** Sport Yacht

**Sub Category:** Sport Fisherman

**Model Year:** 1998

**Year Built:** 1998

**Country:** United States

## Dimensions

---

**LOA:** 47' 0" (14.33m)

**LWL:** 41' 2" (12.55m)

**LOD:** 47' 2" (14.38m)

**Beam:** 15' 6" (4.72m)

**Min Draft:** 4' 5" (1.35m)

## Speed, Capacities and Weight

---

**Water Capacity:** 700 Gallons

**Holding Tank:** 40 Gallons

**Fuel Capacity:** 160 Gallons

## Accommodations

---

**Total Cabins:** 2

## Hull and Deck Information

---

**Hull Material:** Fiberglass

---

## Engine Information

---

**Engines:** 2

**Manufacturer:** MAN

**Model:** D2848 LE 403

**Engine Type:** Inboard

**Fuel Type:** Diesel

---

# DETAILED INFORMATION

---

## Accommodations

---

The interior arrangement has the master suite forward and is entered from the companionway. The entry door, head entry door, some trim and the drawer fronts and cabinets are high gloss varnished teak. The island bed is nicely furnished in designer soft goods including pillows and shams. There is a teak trimmed shelf on both sides of the bed. Hanging locker, cabinet and drawers are provided. There is an ensuite head with shower enclosure. The VacuFlush head is connected to a holding tank through a Y-valve system. There is a mirrored vanity with Corian countertop and basin, and generous cabinets above and beneath the vanity. An opening deck hatch is placed above the head space.

The cozy guest cabin also has a high gloss varnished teak entry door and is entered to starboard in the companionway. There are bunk beds, drawers, hanging locker, and ensuite head with enclosed shower, VacuFlush head, vanity, and overhead deck hatch.

The laundry with stacked washer is behind varnished teak doors opposite the guest stateroom in the companionway.

Moving aft and up steps is the spacious salon, galley, and dinette area. This design works quite nicely and is like a "Great Room" design in a home. Large windows on both sides of this area provide great natural lighting and excellent visibility. One large window aft above the sofa provide an excellent view of the cockpit. Tastefully selected furnishings, soft goods, and window treatments accent this entire area. There is a large L-shaped sofa covered in ultra-leather with matching ottoman and throw pillows. The dinette has a beautiful gloss varnished teak table and upholstered seating matching the salon sofa.

The well equipped galley is port side opposite the dinette and partially open to the salon. The large port window extends into the galley.

The deck house entry door is to starboard in the aft bulkhead and provides access to the large cockpit.

---

## Electronics and Navigation

---

- (3) Standard VHF's (2) Flybridge & (1) Cockpit
- (3) GPS Plotters (2) Flybridge & (1) Cockpit
- Simrad autopilot
- Depth, speed, fish finder on Garmin displays
- TV in salon area
- Stereo in salon area
- Stereo on Flybridge

- ELECTRONICS UPDATED IN 2018

---

## Cockpit/Flybridge/Foredeck

---

The cockpit is entered from either the port or starboard side decks or from the salon area through the cabin entry door and steps starboard side in the cockpit. The cockpit is very large and features a center-mounted fighting chair, large transom door, bait prep station with drawer storage, flush-mounted rod holders in the covering boards and (10) storage rod holders welded to the aft bridge railing and on the hard top supports. A hatchway forward in the cockpit leads to the engine room. The cockpit has a large sunshade with a drop curtain at the transom.

The side decks and foredeck have non-skid finish and are protected by welded aluminum railings. There is a fiberglass pulpit at the stem with a stainless steel anchor cradle and rollers. There is a vertical electric windlass with foot switches mounted aft of the pulpit.

The flybridge is accessed via welded aluminum ladder port side in the cockpit. The flybridge has fishing chair helm and companionway seats. The helm console has hydraulic steering, hydraulic controls, and full instrumentation. Electronics / navigation equipment is mounted in a raised section of the helm console and in an overhead cabinet. There is bench seating forward of the console and on the port side of the flybridge. There is a fiberglass hard top supported by welded deck supports at all four corners. The satellite dome, radar scanner, and antenna are carried on or supported by the hardtop. Weather curtains are attached on three sides and have zippered openings. Visibility from the flybridge is excellent in all directions. Visibility to the cockpit from the helm area is also excellent. There are two triple spreader outriggers and a center rigger. The outriggers are mounted to the deck by swivel bases and to the deckhouse by brackets which provide for lowering the outriggers down or deploying them outward. The center rigger is mounted on the hardtop.

The foredeck carries a RIB dinghy with outboard on chocks. There is a MarQuipt davit to starboard.

---

## Engines

---

- 2,081 +/- Total engine hours

---

## Exclusions

---

- Fishing equipment
- Owner's personal items

---

## Exclusions

---



Owner's personal belongings.

## **Disclaimer**

---

The Company offers the details of this vessel or yacht in good faith but cannot guarantee or warrant the accuracy of this information nor warrant the condition of the vessel. A buyer should instruct his representatives, agents, or his surveyors, to investigate such details as the buyer desires validated. This vessel or yacht is offered subject to prior sale, price change, or withdrawal without notice.

# PHOTOS

**AFT PORT SIDE**



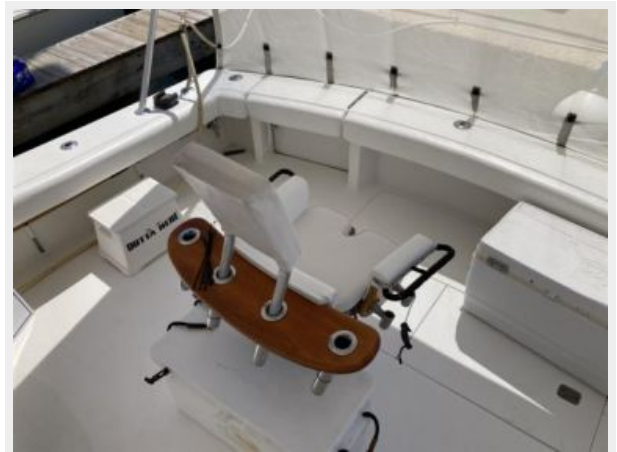
**AFT STB SIDE**



**AFT VIEW**



**COCKPIT 2**



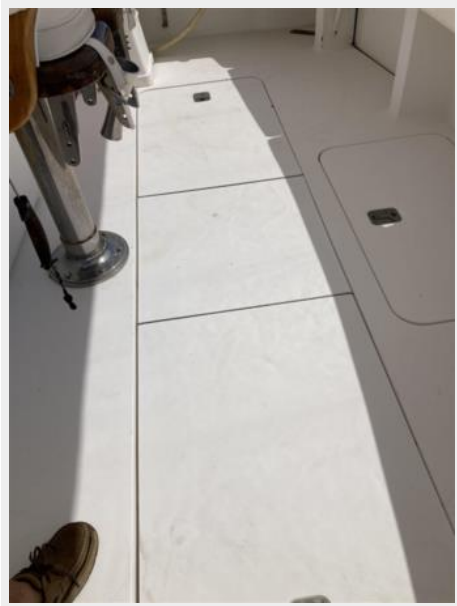
**COCKPIT LOOKING AFT**



**FIGHTING CHAIR**



**COCKPIT 4**



**COLD PLATE COOLER**



### COOLER



### DASH



### ELECTRONICS



### EPIRB



**FB SEATING 2**



**FB SEATING 3**



**FB SEATING 4**



**FB SEATING 5**



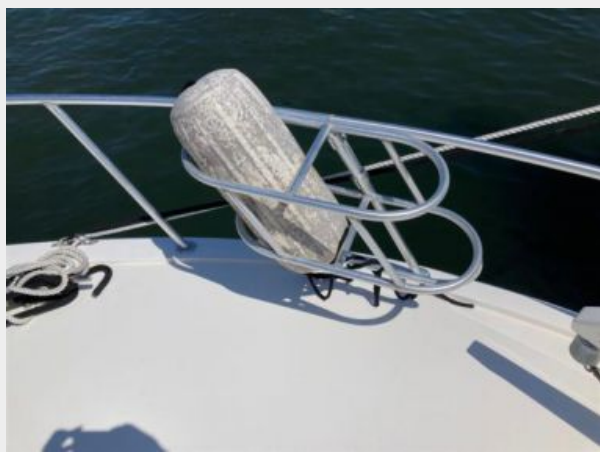
### FB SEATING



### FISHBOX



### FENDER HOLDERS



### FOREDECK



### GARMIN



### INSTRUMENT PANEL



### HELM STORAGE



### STORAGE UNDER HELM



### INSTRUMENTS 2



### INSTRUMENTS 1



### LOWER HELM



### LOW PROFILE DAVIT



### WINDLASS



### TACKLE DRAWS





**SALON ENTRY**



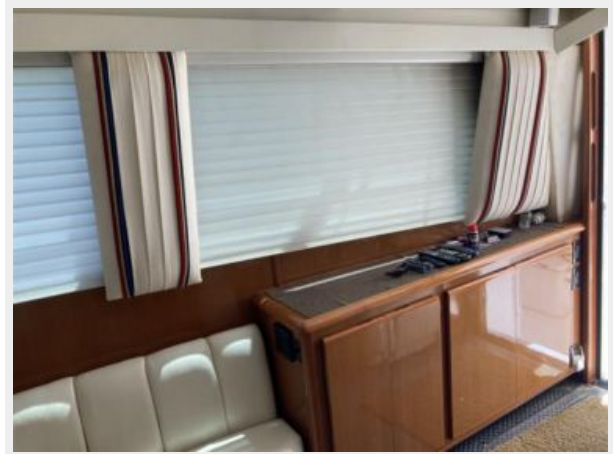
**DINING 1**



**SALON 2**



**DINING 2**



**SALON STB AFT**



**SALON 1**



**SALON 5**



**SALON 3**



**SALON 4**



**GALLEY 1**



**GALLEY 2**



**COMPANIONWAY**



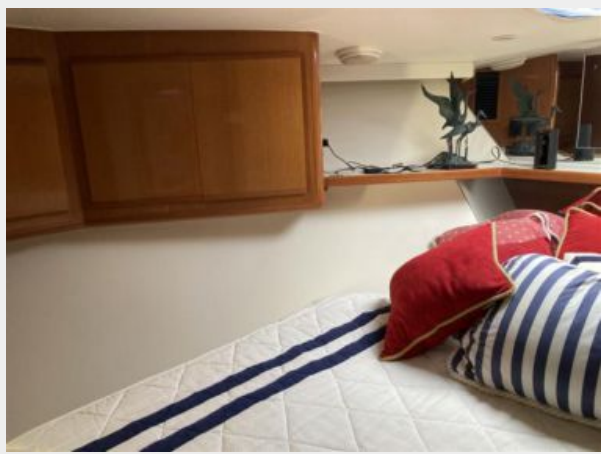
**MASTER SR**



**MASTER SR STB SIDE**



**MASTER SR PORT SIDE**



**MASTER HEAD 2**



**MASTER HEAD 1**



**MASTER HEAD 3**



**GUEST BUNKS 2**



**GUEST BUNKS**



**GUEST SR CLOSET**



**MASTER SR CLOSET**



**GUEST\_DAY HEAD SINK**



**GUEST\_DAY HEAD**



### MASTER CLOSET CEDAR LINED



### WASHER\_DRYER



### 15KW GEN



### BATTERY CHARGERS



### DC PANEL



### STB ENG



**PORT ENGINE**



**PORT ENG**



**STB ENGINE**



# CONTACTS

---

Andrey Shestakov, leading yacht broker of the sales department of Shestakov Yacht Sales Inc. Shestakov Yacht Sales Inc., the official representative of the Miami/Fort Lauderdale FL headquarters.

## Contact details

---

Email: [andrey@shestakovyachtsales.com](mailto:andrey@shestakovyachtsales.com)

Web: [shestakovyachtsales.com/en/](http://shestakovyachtsales.com/en/)

## Telephones

---

USA: +1(954)274-4435

## Office hours

---

Monday – Saturday: **9:00 - 21:00** EDT

Sunday: **closed**

## Address

---



Harbour Towne Marina, 850 NE 3rd St,  
STE 213, Dania, FL 33004