

## SUNSEEKER 30M YACHT — SUNSEEKER



**Builder:** SUNSEEKER

**Year Built:** 2010

**Model:** Motor Yacht

**Price:** PRICE ON APPLICATION

**Location:** Hong Kong

**LOA:** 98' 2" (29.90m)

**Beam:** 24' 8" (7.51m)

**Min Draft:** 6' 7" (2.00m)

**Cruise Speed:** 25 Kts. (29 MPH)

**Max Speed:** 30 Kts. (35 MPH)

Our experienced yacht broker, Andrey Shestakov, will help you choose and buy a yacht that best suits your needs Sunseeker 30m Yacht — SUNSEEKER from our catalogue. Presently, at Shestakov Yacht Sales Inc., we have a wide variety of yachts available on our sale's list. We also work in close contact with all the big yacht manufacturers from all over the world.

If you would like to buy a yacht Sunseeker 30m Yacht — SUNSEEKER or would like help answering any questions concerning purchasing, selling or chartering a yacht, please call **+1(954)274-4435**

---

# TABLE OF CONTENTS

---

TABLE OF CONTENTS	2
SPECIFICATIONS	3
Basic Information	3
Dimensions	3
Speed, Capacities and Weight	3
Accommodations	3
Hull and Deck Information	3
Engine Information	4
PHOTOS	5
Master Suite	7
Master Lounge	7
Master Bed	7
Master Study	7
VIP Suite	8
VIP Bed	8
Guest Suite 1	8
Guest Suite 2	8
Pantry Looking Aft	9
Pantry Looking Fwd	9
Galley	10
Galley Fridge	10
4 Cabin Layout	10
CONTACTS	11
Contact details	11
Telephones	11
Office hours	11
Address	11

---

# SPECIFICATIONS

---

## Basic Information

---

**Category:** Motor Yacht

**Sub Category:** Flybridge

**Model Year:** 2010

**Year Built:** 2010

**Country:** Hong Kong

**Fly Bridge:** Yes

**Cockpit:** Yes

## Dimensions

---

**LOA:** 98' 2" (29.90m)

**Beam:** 24' 8" (7.51m)

**Min Draft:** 6' 7" (2.00m)

## Speed, Capacities and Weight

---

**Cruise Speed:** 25 Kts. (29 MPH)

**Cruise Speed Range:** 600

**Max Speed:** 30 Kts. (35 MPH)

**Max Speed Range:** 1200 Kts.

**Gross Tonnage:** 113 Pounds

**Water Capacity:** 528.344104 Gallons

**Holding Tank:** 132.086026 Gallons

**Fuel Capacity:** 2377.548468 Gallons

## Accommodations

---

**Total Cabins:** 4

**Total Heads:** 5

## Hull and Deck Information

---

**Hull Material:** GRP

**Deck Material:** Teak and Fiberglass

**Hull Configuration:** Deep Vee

**Hull Color:** Midnight Blue

---

## Engine Information

---

**Engines:** 2

**Manufacturer:** MTU

**Model:** 16V 2000 M93

**Engine Type:** Inboard

**Fuel Type:** Diesel

# PHOTOS







**Master Suite**



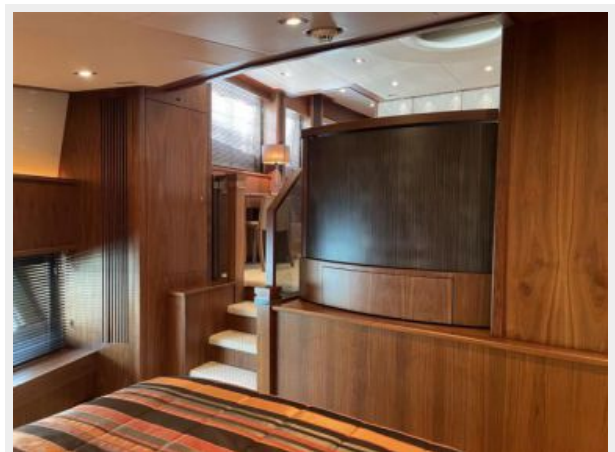
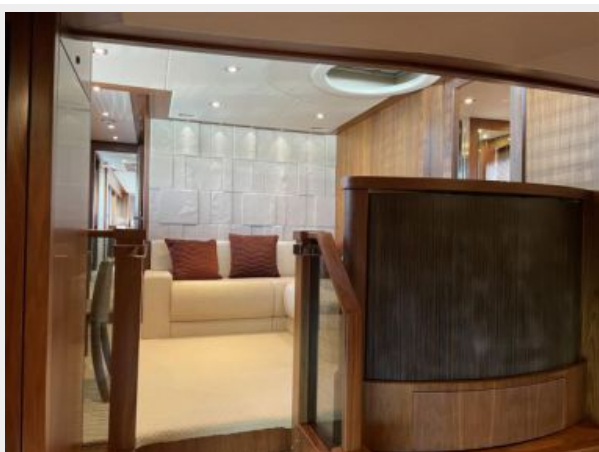
**Master Lounge**



**Master Bed**



**Master Study**





VIP Suite



VIP Bed



Guest Suite 1



Guest Suite 2



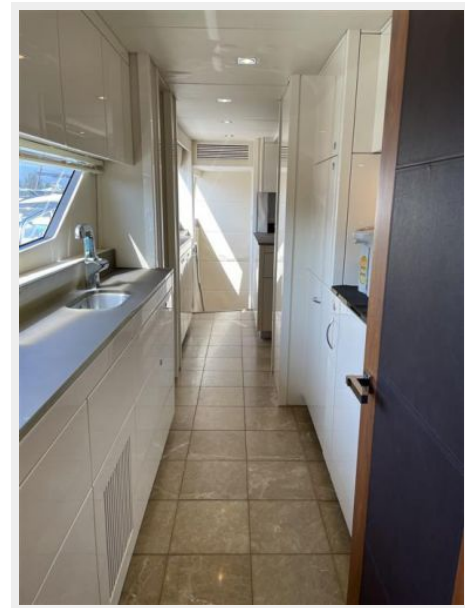




**Pantry Looking Aft**



**Pantry Looking Fwd**



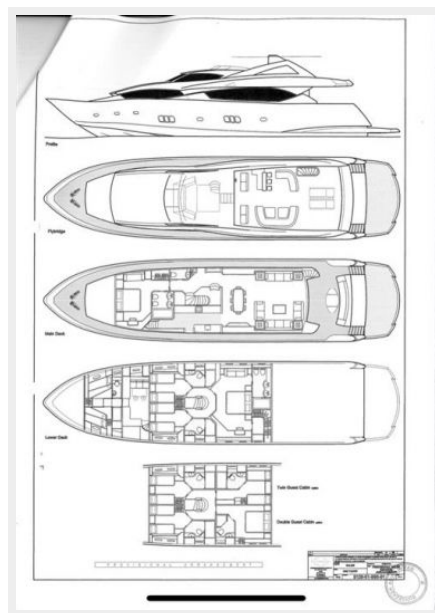
### Galley



### Galley Fridge



### 4 Cabin Layout



# CONTACTS

---

Andrey Shestakov, leading yacht broker of the sales department of Shestakov Yacht Sales Inc. Shestakov Yacht Sales Inc., the official representative of the Miami/Fort Lauderdale FL headquarters.

## Contact details

---

Email: [andrey@shestakovyachtsales.com](mailto:andrey@shestakovyachtsales.com)

Web: [shestakovyachtsales.com/en/](http://shestakovyachtsales.com/en/)

## Telephones

---

USA: +1(954)274-4435

## Office hours

---

Monday – Saturday: **9:00 - 21:00** EDT

Sunday: **closed**

## Address

---



Harbour Towne Marina, 850 NE 3rd St,  
STE 213, Dania, FL 33004