

DRIFT AWAY — OCEAN ALEXANDER



Судостроитель: OCEAN ALEXANDER

Год постройки: 1996

Модель: Моторная яхта

Цена: ЦЕНА ЯХТЫ ПО ЗАПРОСУ

Местонахождение: United States

Длина общая: 55' 0" (16.76m)

Ширина: 16' 4" (4.98m)

Макс. осадка: 4' 1" (1.24m)

Крейс. скорость: 15 Kts. (17 MPH)

Макс. скорость: 18 Kts. (21 MPH)

Купить **Drift Away — OCEAN ALEXANDER** а также выбрать подходящую вам яхту из нашего каталога яхт вам поможет опытный яхтенный брокер Андрей Шестаков. На сегодняшний день компания **Shestakov Yacht Sales Inc.** имеет большое количество яхт в собственном списке продаж, а также тесно сотрудничает со всеми крупными яхтенными производителями по всему миру.

Для того чтобы купить яхту **Drift Away — OCEAN ALEXANDER** а также проконсультироваться по любому вопросу связанному с покупкой, продажей, чартером яхт позвоните по телефону **+7(918)465-66-44**.

ОГЛАВЛЕНИЕ

ОГЛАВЛЕНИЕ	2
ХАРАКТЕРИСТИКИ	6
Обзор	6
Основная информация	6
Размеры	6
Скорость, вместимость и масса	6
Размещение	7
Корпус и палуба	7
Информация о двигателе	7
ПОДРОБНОЕ ОПИСАНИЕ	8
Main Description	8
Ocean Alexander 546 Yachtfisher Walkthrough	8
Ocean Alexander 546 Yachtfisher Accommodations	8
Ocean Alexander 546 Yachtfisher Aft Salon	9
Ocean Alexander 546 Yachtfisher Galley	9
Ocean Alexander 546 Yachtfisher Forward Salon	9
Ocean Alexander 546 Yachtfisher Flybridge	10
Ocean Alexander 546 Yachtfisher Master Stateroom	10
Ocean Alexander 546 Yachtfisher VIP Stateroom	11
Ocean Alexander 546 Yachtfisher Bunk Room	11
Ocean Alexander 546 Yachtfisher Laundry	11
Ocean Alexander 546 Yachtfisher Cockpit, Swim Platform & Lazarette	12
Ocean Alexander 546 Yachtfisher Audio/Video Equipment	12
Ocean Alexander 546 Yachtfisher Electronics	12
Ocean Alexander 546 Yachtfisher Electrical System	12
Ocean Alexander 546 Yachtfisher Engine/Mechanical Equipment	13
Ocean Alexander 546 Yachtfisher Deck Equipment	13
Ocean Alexander 546 Yachtfisher Fire & Safety Equipment	13

Ocean Alexander 546 Yachtfisher Exclusions	13
DISCLAIMER	13
Исключения	14
Отказ от ответственности	14
ФОТОГРАФИИ	15
1 Drift Away 1996 55' Ocean Alexander	15
2	15
03ProfileBow	15
04ProfilePortBow	15
05ProfilePortStern	15
06ProfileStern	15
07DeckSwimPlatform	16
08CockpitPort	16
09CockpitStarboard	16
10AftSalonForward	16
11AftSalonPort	16
12AftSalonStarboard	16
13AftSalonAft	16
14FlybridgeForward	16
15FlybridgeHelm	17
16FlybridgePort	17
17FlybridgeStarboard	17
18FlybridgeAft	17
19GalleyPort	17
20GalleyAft	17
21GalleyForward	17
22ForwardSalonForward	17
23ForwardSalonPort	18
24ForwardSalonStarboard	18

25ForwardSalonDinette	18
26ForwardSalonAft	18
27MasterStateroomCompanionway	18
28ShipsLaundry	18
29MasterStateroomAft	19
30MasterStateroomPort	19
32MasterStateroomHeadVanityTo	19
31MasterStateroomStarboard1	19
33MasterStateroomHeadToiletSh	19
34GuestBerthingCompanionway	19
35VIPStateroomForward	20
36IPStateroomPort	20
38VIPHeadVanityShower	20
37VIPStateroomStarboard	20
39VIPHeadToiletShower	20
40BunkRoom	20
41BunkRoomHeadToiletVanity	21
42BunkRoomHeadShower	21
43MECHEngineRoomAft	21
44MECHPortMainEngineAft	21
45MECHPortMainEngine	21
46MECHStarboardMainEngineAft	21
47MECHStarboardMainEngine	22
48MechMainEngineFuelFiltratio	22
49MECHGeneratorFuelFiltration	22
50MECHWaterMakerControlPanel	22
51MECHUltravioletWaterPurifie	22
52MECHReverseCycleAirConditio	22
53MECHWaterHeater	23

54MECHEngineRoomFireSuppressi	23
56ELECBatteryCharger	23
55ELEGenerator	23
57ELECElectricalPanel	24
58Deck2017HighfieldTender1	24
60DeckTenderOutboard	24
59Deck2017HighfieldTender	24
61DeckMarquipDavit	24
62DeckDualCradles	24
63DeckEPIRB	25
64DeckLifeRaft	25
65DeckBowPulpit	25
66DeckWindlass	25
68DeckAuxiliaryFlukeAnchor	26
67DeckPrimaryRocnaAnchor	26
69DeckAuxiliaryBruceAnchor	26
70DeckSparePropellers	26
71DeckMarquipBoardingStairs	26
72DeckStainlessSteelBoardingL	26
73DeckChestFreezer	27
74DeckHookahCompressor	27
75DeckHookahAirLine	27
76DeckStainlessSteelFenderHol	27
КОНТАКТЫ	28
Контактная информация	28
Телефоны	28
Время работы	28
Адрес	28

ХАРАКТЕРИСТИКИ

Обзор

Drift Away is an Ocean Alexander 546 Yachtfisher cockpit motor yacht that features a unique and very comfortable enclosed aft salon for additional entertaining and relaxing space. With her full beam king master stateroom with ensuite head, a forward island queen VIP stateroom with a VIP head and a third bunk room with ensuite head her accommodations are very comfortable. All three heads feature separate shower stalls and an individual washer and dryer is located in the companionway to the master stateroom. These and many other additional comforts make it easy to live aboard for extended periods. The main cabin features the forward salon with a large U-shaped dinette, the U-shaped fully equipped galley has a large amount of storage and counter space and is open to the salon and provides easy access to the aft salon, the staterooms, and out onto deck through the side doors to both port and starboard of the aft salon. Her flybridge provides a nice seating area with a captains chair centered at the helm, a co-captains chair to starboard and a large U-shaped bench seating area for entertaining with access to the aft top deck, the davit and dual cradles. She is well powered with twin Detroit Diesel 8V92TA 735 hp diesel engines and a large generator to power her electrical needs.

Основная информация

Тип судна: Моторная яхта

Модельный год: 1996

Год постройки: 1996

Страна: United States

Размеры

Длина общая: 55' 0" (16.76m)

Ширина: 16' 4" (4.98m)

Макс. осадка: 4' 1" (1.24m)

Скорость, вместимость и масса

Крейс. скорость: 15 Kts. (17 MPH)

Макс. скорость: 18 Kts. (21 MPH)

Вместимость воды: 240 Gallons

Вместимость сточного бака: 75 Gallons

Объем топливного бака: 700 Gallons

Размещение

Всего кают: 3

Всего ком. состава: 3

Корпус и палуба

Материал корпуса: Fiberglass

Информация о двигателе

Двигатели: 2

Производитель: Detroit Diesel

Модель: 8V92TA

Тип двигателя: Inboard

Тип топлива: Diesel

ПОДРОБНОЕ ОПИСАНИЕ

Main Description

Drift Away is an Ocean Alexander 546 Yachtfisher cockpit motor yacht that features a unique and very comfortable enclosed aft salon for additional entertaining and relaxing space. With her full beam king master stateroom with ensuite head, a forward island queen VIP stateroom with a VIP head and a third bunk room with ensuite head her accommodations are very comfortable. All three heads feature separate shower stalls and an individual washer and dryer is located in the companionway to the master stateroom. These and many other additional comforts make it easy to live aboard for extended periods. The main cabin features the forward salon with a large U-shaped dinette, the U-shaped fully equipped galley has a large amount of storage and counter space and is open to the salon and provides easy access to the aft salon, the staterooms, and out onto deck through the side doors to both port and starboard of the aft salon. Her flybridge provides a nice seating area with a captains chair centered at the helm, a co-captains chair to starboard and a large U-shaped bench seating area for entertaining with access to the aft top deck, the davit and dual cradles. She is well powered with twin Detroit Diesel 8V92TA 735 hp diesel engines and a large generator to power her electrical needs.

Recent Upgrades or Maintenance includes but is not limited to:- Detroit alternators rebuilt port (2020) starboard (2021)- Detroit engine starters rebuilt starboard (2016) port (2020)- New Highfield 310 Tender (2020)- New enclosure side panels (2020)- 4 8D 225 APH inverter/bow thruster AGM Batteries (2020)- Installed new interior carpeting throughout (2020)- New Tuft and Needle "Mint" Mattress and mattress liner in the master stateroom (2019)- New self contained 16,000 BTU reverse air HVAC unit (2019)- Raymarine Axiom chart plotter with HD color radar (2018)- New Standard Horizon VHF radio and antennas (2018)- Port transmission cooler replaced (2018)- Port transmission rebuilt (2018)- Port and starboard valves and injectors adjusted (2018)

Ocean Alexander 546 Yachtfisher Walkthrough

Boarding Drift Away can be accomplished via the swim platform and cockpit and then into the aft salon or via the side deck boarding gates and through the port and starboard side doors into the aft salon. The flybridge is up a short stairway to starboard of the wet bar and then access to the galley and forward salon is to starboard and down a short stairway. once in the main cabin, the master stateroom is aft with the ensuite head to port, the VIP stateroom is forward with the VIP head just aft to starboard and the bunk room is to port down a short stairway. The bunk room head is to starboard in the space with engine room access aft in the ensuite head shower stall.

Ocean Alexander 546 Yachtfisher Accommodations

The accommodations on this motor yacht provides comfortable sleeping quarters for up to 6

people. The spacious master stateroom spans the beam below the aft salon. The ensuite head with separate shower stall is to port when entering the space. The VIP stateroom is forward with an island queen and the ensuite head is aft in the space to starboard. The bunk room with its two over-under single berths is to port and aft of the VIP stateroom. The bunk room's ensuite head is to starboard in the space.

Ocean Alexander 546 Yachtfisher Aft Salon

The full beam aft salon is spacious and can be bright due to all large windows on port, starboard and aft or made darker with the curtains for a great TV room. There are two leather loveseats, each with two electric recliners built in that provides very comfortable seating in the aft salon. A large 60" hi\lo flat screen TV with 4 ceiling mounted speakers provide audio and video entertainment in this space. A large storage coffee table also raises up to create a dinette. Forward is a wet bar with storage cabinets, a refrigerator and a separate ice maker. Access to the cockpit can be achieved through a starboard side aft sliding door. Access to the side decks and foredeck can be achieved through port and starboard wing doors. The flybridge stairway is forward in the space and just starboard of the centerline and the stairway to the main cabin is to starboard forward. The carpeted sole is in good condition.

To view a 360 degree interactive photo of the aft salon, copy and paste the link below into your browser:

Ocean Alexander 546 Yachtfisher Galley

The large U-shaped galley is located to port aft in the main cabin. The galley is open to the salon.

The galley offers:- Dual basin resin under counter mounted sink with garbage disposal- Full size Samsung double door refrigerator with separate large freezer drawer (AC only)- 4-burner induction electric cooktop with vent hood- GE electric oven- GE Stainless Steel microwave oven- Granite counter tops with large bar and two padded stools between the galley and forward salon.- Teak and holly flooring- Plenty of storage drawers and cabinets, magnetic knife holder and electric fan

To view a 360 degree interactive photo of the galley, copy and paste the link below into your browser:

Ocean Alexander 546 Yachtfisher Forward Salon

The near full beam forward salon is spacious and bright due to the large windows on port, starboard and forward. The window blinds provide shade and privacy. The sole is parquet and in nice condition and covered in the forward salon by a custom fit carpet. There are two padded stools at the bar forward of the galley, an L-shaped double loveseat provide ample seating in the

salon and storage underneath. The large U-shaped dinette can easily seat 5-6 people and features a granite tabletop.

To view a 360 degree interactive photo of the forward salon, copy and paste the link below into your browser:

Ocean Alexander 546 Yachtfisher Flybridge

The stairs from the aft salon to the flybridge can be closed off with a large glass hinged overhead door and a small hinged swinging half door. Once on the flybridge the very spacious seating area and the great 360 degree views around the yacht are impressive. The helm is centered forward with a single Stidd captains chair at the helm and a smaller co-captains chair to starboard. An L-shaped settee with storage is to port and aft and an additional bench seat is to starboard. The helm and wrap around flybridge seating will comfortably seat many people. The port and starboard side panels of the flybridge enclosure were new 2020.

The flybridge helm features:- Raymarine Axiom Hybridtouch Multi-Function Display with HD color radar (2018)- VesperMarine Watchmate Vision display- Raymarine Autopilot- Standard Horizon Explorer VHF Radio with DSC (2018)- iCOM IC-M127 VHF Marine Radio - iCOM IC-M710 MF\HF Marine transceiver- Wesmar Stabilizer Control Panel- Balmar Battery Monitoring Display- Engine\transmission controls- Synchronizer switch- Wesmar Bow Thruster control- Trim tabs and windlass controls- ACR Searchlight controls- Danforth Compass- Pioneer FH-S700BS stereo with speakers- Ram Tablet Mount

On the aft deck of the flybridge is:- Marquip Davit with wired remote- Two tender Cradles- 2017 Highfield 310 RIB tender (2020) with Mercury 15 hp Outboard

To view a 360 degree interactive photo of the flybridge, copy and paste the link below into your browser:

Ocean Alexander 546 Yachtfisher Master Stateroom

The spacious master stateroom spans the full beam below the aft salon. The king berth with storage drawers is centered in the space with nightstands with storage drawers on either side and individual lamps. There are three portlights above the storage cabinets on both port and starboard bulkheads that provide natural light and ventilation to the space. Along the aft bulkhead is a large window\escape hatch to the cockpit. A makeup table with fold down stool is featured on the port side of the space. The ensuite head is located immediately to port and forward when you enter the space and features a large vanity with a molded sink in granite countertop, large mirrored medicine cabinet and under countertop storage. Opposite the vanity is the separate shower stall and between the vanity and shower stall is the Vacuflush toilet. The head sole is teak and holly and the stateroom sole is parquet with a custom carpet cover and features lighter

hardwood accents throughout.

To view a 360 degree interactive photo of the master stateroom, copy and paste the link below into your browser:

To view a 360 degree interactive photo of the master head, copy and paste the link below into your browser:

Ocean Alexander 546 Yachtfisher VIP Stateroom

The island queen in the VIP stateroom is the centerpiece of this space. Under berth storage, storage cabinets along all three bulkheads as well as a hanging locker to starboard provides ample storage for guests. A make up table is also included aft to port in the space. A large overhead hatch and two portlights provides natural light and ventilation to the space. The sole is carpeted.

The VIP head is directly connected to the VIP stateroom but does have a door to the companionway as well. The head is located immediately to starboard and aft when you enter the space and features a large vanity with a molded sink in granite countertop, large mirrored medicine cabinet and under countertop storage. The separate shower stall is aft of the vanity and the Vacuflush toilet is to port of the shower.

To view a 360 degree interactive photo of the VIP stateroom, copy and paste the link below into your browser:

To view a 360 degree interactive photo of the VIP head, copy and paste the link below into your browser:

Ocean Alexander 546 Yachtfisher Bunk Room

The bunk room with its two single over under berths is aft, to port and down a short stairway from the forward companionway. A single portlight provides natural light and ventilation and there is storage under the both bunks. The bunk room head is adjacent to starboard and provides walk in access to the engine room..

To view a 360 degree interactive photo of the bunk room, copy and paste the link below into your browser:

To view a 360 degree interactive photo of the bunk room head, copy and paste the link below into your browser:

Ocean Alexander 546 Yachtfisher Laundry

The yacht's laundry features individual GE stacked washer and dryer units built into the starboard bulkhead in the companionway to the master stateroom.

Ocean Alexander 546 Yachtfisher Cockpit, Swim Platform & Lazarette

The large cockpit on this motor yacht provides another nice outdoor area for line handling or relaxing. The cockpit features a chest freezer, storage compartments, hot and cold shower, speakers and access to the large lazarette, swim platform and aft salon. On the swim platform is a Glendinning cordmaster for the shore power cord and a stainless steel and teak fold down swim ladder.

To view a 360 degree interactive photo of the cockpit, copy and paste the link below into your browser:

To view a 360 degree interactive photo of the lazarette, copy and paste the link below into your browser:

Ocean Alexander 546 Yachtfisher Audio/Video Equipment

This yacht is outfitted with the following audio and video equipment:- 60" LG Flat screen TV with OTA antenna (Aft Salon)- Pioneer FH-S700BS stereo with speakers (flybridge)- ONKYO Audio Video Control Tuner Amplifier- ADCOM GFS-6 Speaker Selector- Numerous speakers throughout the yacht

Ocean Alexander 546 Yachtfisher Electronics

This yacht is outfitted with the following electronic equipment:- Raymarine Axiom Hybridtouch Multi-Function Display with HD color radar (2018)- VesperMarine Watchmate Vision display- Raymarine Autopilot- Standard Horizon Explorer VHF Radio with DSC (2018)- iCOM IC-M127 VHF Marine Radio - iCOM IC-M710 MF\HF Marine transceiver

Ocean Alexander 546 Yachtfisher Electrical System

This yacht is outfitted with the following electrical equipment:- Generator (4,357 hours)- Sentry 12 vdc 60 amp 115/230 vac 60-4 Battery Charger- Glendinning retractable 50 amp power cord system- 4 8D 225 APH inverter/bow thruster AGM Batteries (2020)- Starting, house, & thrusters battery banks- Balmar Battery Monitoring Display- Twin 30 amp to single 50 amp adapter- 50' 50 amp power cord

Ocean Alexander 546 Yachtfisher Engine/Mechanical Equipment

This yacht is outfitted with the following engine/mechanical equipment:- Twin Detroit Diesel 8V92TA 735 hp diesel main engines (5,383 & 5,385 hours)- Detroit alternators rebuilt port (2020) starboard (2021)- Detroit engine starters rebuilt starboard (2016) port (2020)- Port transmission cooler replaced (2018)- Port transmission rebuilt (2018)- Port and starboard valves and injectors adjusted (2018)- Synchronizer- Wesmar Bow thruster- 38 Gallon water heater- Water Makers, Inc water maker- Mighty Pure ultraviolet water purifier- 5 zone reverse cycle air conditioning/heating- Racor fuel filters- Oil Change system with new and used oil storage tank- Tank Watch system- Spare Propellers- Shark portable Vacuum- Spare parts & filters

To view a 360 degree interactive photo of the engine room, copy and paste the link below into your browser:

Ocean Alexander 546 Yachtfisher Deck Equipment

This yacht is outfitted with the following deck equipment:- 2017 Highfield 310 Tender (2020)- Mercury 15 hp outboard engine- New enclosure side panels (2020)- Marquip Davit with wired remote- Marquip Sea Stairs- Stainless steel boarding ladder- Dual tender cradles- Maxwell windless with foot switches- Rocna anchor- Bow washdown- Thomas hookah air compressor and air line with regulator- 2 - Two place Stainless Steel Fender racks- Stainless Steel stanchions and handrails- Fenders and lines

Ocean Alexander 546 Yachtfisher Fire & Safety Equipment

This yacht is outfitted with the following fire and safety equipment:- 8 Person lift raft (not in certification)- ACR EPIRB- PFD's- Throwable life ring- Engine room fire suppression system- Fire extinguishers- Dual Stainless Steel horns- Loud Hailer- Smoke & CO detectors- Bilge pumps- ACR remote controlled search light

Ocean Alexander 546 Yachtfisher Exclusions

- Seller's personal belongings

DISCLAIMER

The Company offers the details of this vessel in good faith but cannot guarantee or warrant the accuracy of this information nor warrant the condition of the vessel. A buyer should instruct his agents, or his surveyors, to investigate such details as the buyer desires validated. This vessel is offered subject to prior sale, price change, or withdrawal without notice.

Исключения

При продаже яхты исключаются личные вещи владельца.

Отказ от ответственности

Компания предоставляет описание судна или яхты добросовестно, но не может гарантировать точность этой информации, а также не ручается за техническое состояние. Покупатель должен проинструктировать своих агентов или оценщиков исследовать представленную информацию более подробно, по собственному желанию. Продажа судна или яхты, изменение цены или снятие с продажи будет происходить без предварительного уведомления.

ФОТОГРАФИИ

1 Drift Away 1996 55' Ocean Alexander



2



03ProfileBow



04ProfilePortBow



05ProfilePortStern



06ProfileStern



07DeckSwimPlatform



08CockpitPort



09CockpitStarboard



10AftSalonForward



11AftSalonPort



12AftSalonStarboard



13AftSalonAft



14FlybridgeForward



15FlybridgeHelm



16FlybridgePort



17FlybridgeStarboard



18FlybridgeAft



19GalleyPort



20GalleyAft



21GalleyForward



22ForwardSalonForward



23ForwardSalonPort



24ForwardSalonStarboard



25ForwardSalonDinette



26ForwardSalonAft



27MasterStateroomCompanionway



28ShipsLaundry



29MasterStateroomAft



30MasterStateroomPort



31MasterStateroomStarboard1



32MasterStateroomHeadVanityTo



33MasterStateroomHeadToiletSh



34GuestBerthingCompanionway



35VIPStateroomForward



36IPStateroomPort



37VIPStateroomStarboard



38VIPHeadVanityShower



39VIPHeadToiletShower



40BunkRoom



41BunkRoomHeadToiletVanity



42BunkRoomHeadShower



43MECHEngineRoomAft



44MECHPortMainEngineAft



45MECHPortMainEngine



46MECHStarboardMainEngineAft



47MECHStarboardMainEngine



48MechMainEngineFuelFiltratio



49MECHGeneratorFuelFiltration



50MECHWaterMakerControlPanel



51MECHUltravioletWaterPurifie



52MECHReverseCycleAirConditio



53MECHWaterHeater



54MECHEngineRoomFireSuppressi



56ELEC BatteryCharger



55ELECGenerator



57ELECElectricalPanel



58Deck2017HighfieldTender1



59Deck2017HighfieldTender



60DeckTenderOutboard



61DeckMarquipDavit



62DeckDualCradles



63DeckEPIRB



64DeckLifeRaft



65DeckBowPulpit



66DeckWindlass



67DeckPrimaryRocnaAnchor



68DeckAuxiliaryFlukeAnchor



69DeckAuxiliaryBruceAnchor



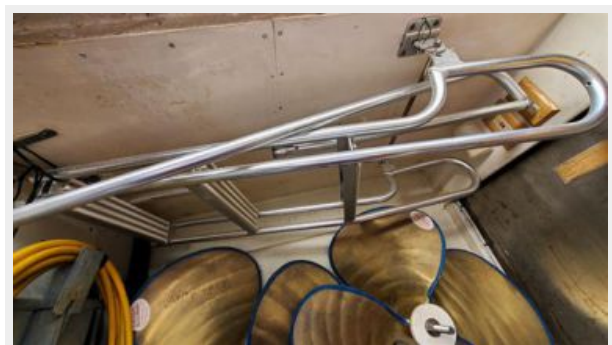
70DeckSparePropellers



71DeckMarquipBoardingStairs



72DeckStainlessSteelBoardingL



73DeckChestFreezer



74DeckHookahCompressor



75DeckHookahAirLine



76DeckStainlessSteelFenderHol



КОНТАКТЫ

Андрей Шестаков (Andrey Shestakov) – ведущий яхтенный брокер отдела продаж яхт и судов компании Shestakov Yacht Sales Inc. Официальный представитель Shestakov Yacht Sales Inc. для русскоговорящих клиентов в центральном офисе компании в Майами/Форт Лодердейл/Флорида/США.

Контактная информация

Email: andrey@shestakovyachtsales.com

Web: shestakovyachtsales.com

Телефоны

Краснодарский край: **+7(918)465-66-44**

США, Майами, Флорида: **+1(954)274-4435**

Время работы

Понедельник – Суббота: **9:00 - 21:00**
EDT

Воскресенье: **Закрето**

Адрес



Harbour Towne Marina, 850 NE 3rd St,
STE 213, Dania, FL 33004