

TRUST ME — HUNTER



Builder: HUNTER

LOA: 46' 0" (14.02m)

Year Built: 2002

Beam: 14' 0" (4.27m)

Model: Sloop

Max Draft: 5' 6" (1.68m)

Price: PRICE ON APPLICATION

Location: United States

Our experienced yacht broker, Andrey Shestakov, will help you choose and buy a yacht that best suits your needs **Trust Me — HUNTER** from our catalogue. Presently, at Shestakov Yacht Sales Inc., we have a wide variety of yachts available on our sale's list. We also work in close contact with all the big yacht manufacturers from all over the world.

If you would like to buy a yacht **Trust Me — HUNTER** or would like help answering any questions concerning purchasing, selling or chartering a yacht, please call **+1(954)274-4435**

TABLE OF CONTENTS

TABLE OF CONTENTS	2
SPECIFICATIONS	6
Overview	6
Basic Information	6
Dimensions	6
Speed, Capacities and Weight	6
Accommodations	6
Hull and Deck Information	7
Engine Information	7
DETAILED INFORMATION	8
MAIN DESCRIPTION	8
MANUFACTURER DISCRIPTION	8
Electronics	8
ELECTRICAL	9
SAILS & RIGGING	9
DECK	9
Mechanical	9
DISCLAIMER	9
Exclusions	10
Disclaimer	10
PHOTOS	11
1	11
2	11
3	11
4	11
5	11
6	12
7	12

8	12
9	12
10	12
11	12
12	13
13	13
14	13
15	13
16	13
17	13
18	14
19	14
20	14
21	14
22	14
23	14
24	15
25	15
26	15
27	15
28	15
29	15
30	16
31	16
32	16
33	16
34	16
35	16
36	17

37	17
38	17
39	17
40	17
41	17
42	18
43	18
44	18
45	18
46	18
47	18
48	19
49	19
50	19
51	19
52	19
53	19
54	20
55	20
56	20
57	20
58	20
59	20
60	21
61	21
63	21
62	21
64	21
65	21

66	22
67	22
68	22
CONTACTS	23
Contact details	23
Telephones	23
Office hours	23
Address	23

SPECIFICATIONS

Overview

"TRUST ME" 2002 HUNTER 460 Trust Me was built in Florida by Hunter Marine (now Marlow-Hunter). For over 30 years Hunter has built quality offshore boats at a reasonable price. If you have ever seen the size of the hardware used in the chain plates alone, you know what I am saying. Trust Me made the 1200 mile voyage from Tortola to West Palm Beach in the fall of 2020. Her owner commented that she performed very well in the various conditions they encountered, and has mixed feelings about selling her, but has decided to replace her with a similar size catamaran to accommodate his family's needs. Trust Me is the shoal draft version of 5'5" and 3 cabins. Headroom is 6'6" throughout except the heads & forward cabin are 6'3"

Basic Information

Category: Sloop

Model Year: 2002

Year Built: 2002

Country: United States

Dimensions

LOA: 46' 0" (14.02m)

Beam: 14' 0" (4.27m)

Max Draft: 5' 6" (1.68m)

Clearance: 63' 0" (19.20m)

Speed, Capacities and Weight

Displacement: 26000 Pounds

Water Capacity: 200 Gallons

Fuel Capacity: 100 Gallons

Accommodations

Total Cabins: 3

Total Heads: 2

Hull and Deck Information

Hull Material: Fiberglass

Engine Information

Engines: 1

Manufacturer: Yanmar

Model: 4JH2DTE

Engine Type: Inboard

Fuel Type: Diesel

DETAILED INFORMATION

MAIN DESCRIPTION

"TRUST ME" 2002 HUNTER 460 Trust Me was built in Florida by Hunter Marine (now Marlow-Hunter). For over 30 years Hunter has built quality offshore boats at a reasonable price. If you have ever seen the size of the hardware used in the chain plates alone, you know what I am saying. Trust Me made the 1200 mile voyage from Tortola to West Palm Beach in the fall of 2020. Her owner commented that she performed very well in the various conditions they encountered, and has mixed feelings about selling her, but has decided to replace her with a similar size catamaran to accommodate his family's needs. Trust Me is the shoal draft version of 5'5" and 3 cabins. Headroom is 6'6" throughout except the heads & forward cabin are 6'3".

MANUFACTURER DISCRIPTION

Bringing the cockpit full beam allows the use of a custom console complete with mechanical steering, electronics space, twin fold-down tables, and even a storage bin with drink holders. The standard recessed windlass allows the capability of handling two anchors simultaneously on the dual offset anchor roller. Self-draining propane lockers on both port and starboard are convenient, safe, and practical. The Hunter trademark cockpit arch keeps the adjustable traveler up and out of the way and makes a great attachment point for the Bimini. Hand-rubbed teak and exquisite fabrics are in evidence throughout the grand interior, where storage is plentiful, as is natural light and ventilation. The dinette area is large enough to handle the crew but intimate enough for two. An enormous dual-opening refrigerator and freezer are central to the U-shaped galley. Force 10 stove and oven, plus a microwave, will make dinners a joy to prepare while the island sink will have cleanup covered. Storage for everything is at hand, including the recessed trash receptacle. Entertaining is gracious with the open salon, which incorporates a TV and CD stereo. Twin comfortable seats and a convertible cocktail table are located just forward of the extensive nav station with plenty of space for electronics and gear. The forward master stateroom rivals most yachts twice her size. Twin-hanging lockers and lots of drawers make staying aboard easy, and the inner-spring mattresses guarantee a great night's sleep. The forward master head is spacious and provides plenty of storage. The master shower is separate from the head, allowing private use at all times; a drop-down seat is even included for comfort. Aft, there is a choice of two layouts: dual staterooms or a single stateroom and an office-work area. Both are large, airy, and comfortable. In addition, an aft head with an integral shower is positioned for convenient access from the aft stateroom or the salon.

Electronics

(2) Raymarine C 90 W MFDs (helm/nav station) (3) Raymarine i70 control heads (autopilot/depth/wind/log) Raymarine 24 mile radar Raymarine WAAS GPS receiver Icom IC-M422 VHF with DSC & AIS Uniden summersible VHF (handheld) ACR Global Fix 406

EPIRB Alpine tuner/DVD player with JVC power amplifier Sony 28" TV

ELECTRICAL

(2) 30 amp shorepower inlets (125 volt) Fischer Panda 4200 generator Outback Mate inverter/charger (2) 210 amp AGM house batteries (420 A/hr total) (2) rotary battery selector switches Delco maintenance free starting battery Optima D 34M (bow thruster) 55 amp alternator

SAILS & RIGGING

Selden mast with in-mast furling Selden B&R masthead/ Double spreader rig Dyneema adjustable backstay Selden rigid boom vang New standing rigging including jib furler & forestay (2018) Quantum furling mainsail & Rutgerson 100mm clew block (2018) Quantum furling jib (2) Lewmar 48 ST primaries (2) Lewmar 44 ST secondaries Halyards/ Sheets/ Mainsail furling and Mainsail boom traveler lines are led to cockpit New running rigging (9) line clutches (see photos)

DECK

10' Zodiac Wave tender with 3.5 Tohatsu outboard motor Revere 8 man liferaft (current) Side Power bow thruster (12 volt) (2) Dometic A/Cs with Panda start booster Simpson Lawrence Horizon 1500 windlass (2) Plow anchors (40lb Delta with 150' chain/ 25lb Bruce with 75' chain & rode) Sea anchor (2) Adler Barbour 12/24 volt compressors (freezer/fridge) (2) Jabsco vac-u-flush heads Jabsco Par Max freshwater pump (12 volt) 11 gal water heater Rule 1500 bilge pump Manual bilge pump (2) Sump pumps (showers) Magma propane grill/ aluminum tank 12/120 volt lighting & outlets throughout Dockside water inlet Cockpit cushions & stern rail seats Transom shower Safety gear (PFDs/ MOB gear with 3 strobes/ fire exting/ flares/ harnesses/ Lifesling 2 and a drogue)

Mechanical

Yanmar 4JH2DTE 75hp 1565 hours (1.5 gph @ 2800 rpm) Racor fuel filter Kanzaki KM 4A transmission 17" bronze 3 blade propeller/ 1.25" shaft Stainless steel rudder post Fischer Panda 4200 generator (4kw) 472 hours

DISCLAIMER

The Company offers the details of this vessel in good faith but cannot guarantee or warrant the accuracy of this information nor warrant the condition of the vessel. A buyer should instruct his agents, or his surveyors, to investigate such details as the buyer desires validated. This vessel is offered subject to prior sale, price change, or withdrawal without notice.

Exclusions

Owner's personal belongings.

Disclaimer

The Company offers the details of this vessel or yacht in good faith but cannot guarantee or warrant the accuracy of this information nor warrant the condition of the vessel. A buyer should instruct his representatives, agents, or his surveyors, to investigate such details as the buyer desires validated. This vessel or yacht is offered subject to prior sale, price change, or withdrawal without notice.

PHOTOS

1



2



3



4



5



6



7



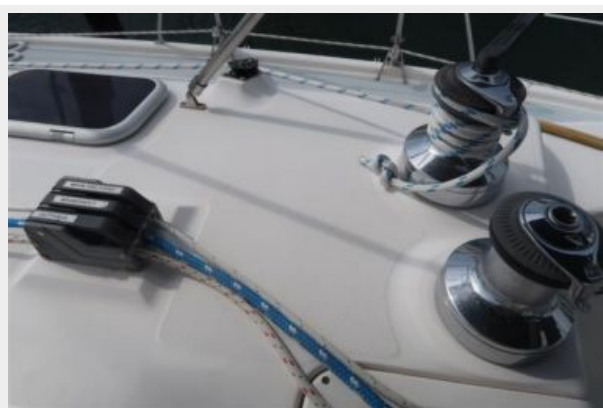
8



9



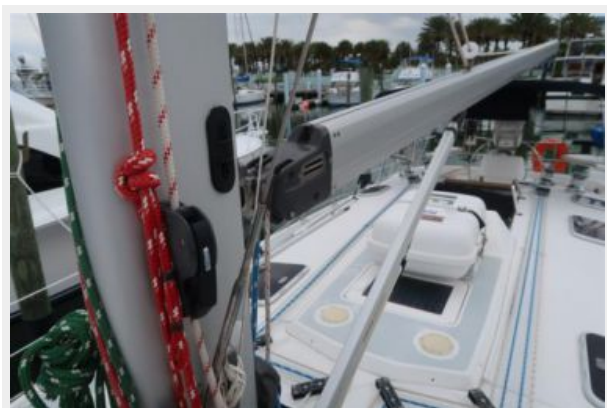
10



11



12



13



14



15



16



17



18



19



20



21



22



23



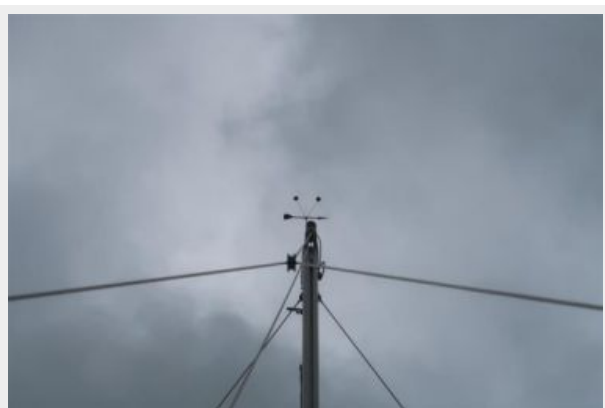
24



25



26



27



28



29



30



31



32



33



34



35



36



37



38



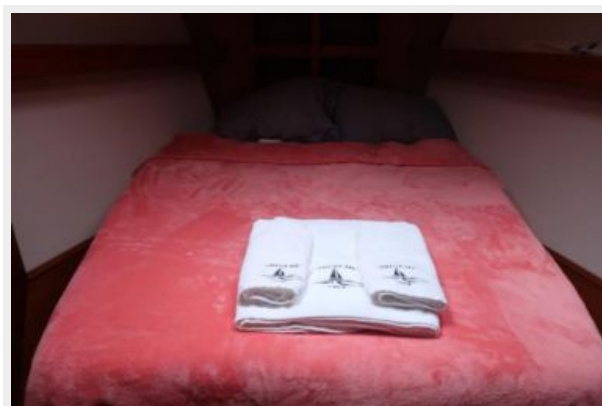
39



40



41



42



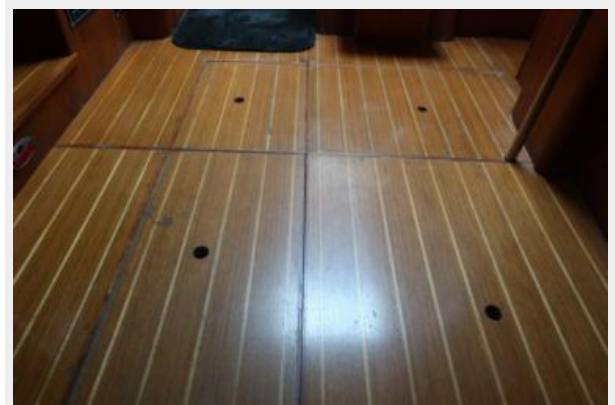
43



44



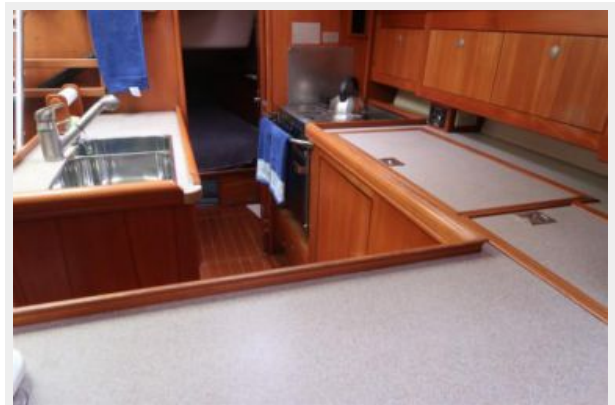
45



46



47



48



49



50



51



52



53



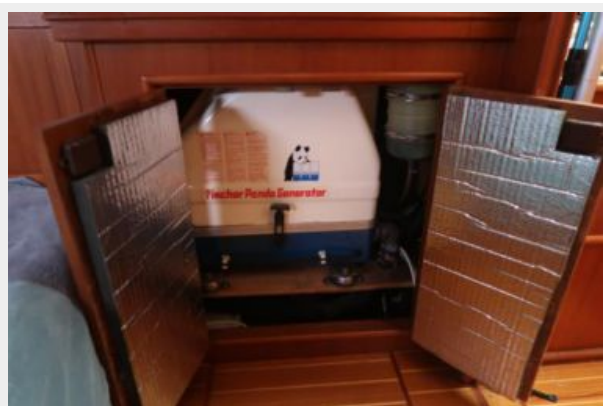
54



55



56



57



58



59



60



61



62



63



64



65



66



67



68



CONTACTS

Andrey Shestakov, leading yacht broker of the sales department of Shestakov Yacht Sales Inc. Shestakov Yacht Sales Inc., the official representative of the Miami/Fort Lauderdale FL headquarters.

Contact details

Email: **andrey@shestakovyachtsales.com**

Web: shestakovyachtsales.com/en/

Telephones

USA: **+1(954)274-4435**

Office hours

Monday – Saturday: **9:00 - 21:00 EDT**

Sunday: **closed**

Address



Harbour Towne Marina, 850 NE 3rd St,
STE 213, Dania, FL 33004