

TRUST ME — HUNTER



Судостроитель: HUNTER

Год постройки: 2002

Модель: Sloop

Цена: ЦЕНА ЯХТЫ ПО ЗАПРОСУ

Местонахождение: United States

Длина общая: 46' 0" (14.02m)

Ширина: 14' 0" (4.27m)

Макс. осадка: 5' 6" (1.68m)

Купить **Trust Me — HUNTER** а также выбрать подходящую вам яхту из нашего каталога яхт вам поможет опытный яхтенный брокер Андрей Шестаков. На сегодняшний день компания **Shestakov Yacht Sales Inc.** имеет большое количество яхт в собственном списке продаж, а также тесно сотрудничает со всеми крупными яхтенными производителями по всему миру.

Для того чтобы купить яхту **Trust Me — HUNTER** а также проконсультироваться по любому вопросу связанному с покупкой, продажей, чартером яхт позвоните по телефону **+7(918)465-66-44**.

ОГЛАВЛЕНИЕ

ОГЛАВЛЕНИЕ	2
ХАРАКТЕРИСТИКИ	6
Обзор	6
Основная информация	6
Размеры	6
Скорость, вместимость и масса	6
Размещение	6
Корпус и палуба	7
Информация о двигателе	7
ПОДРОБНОЕ ОПИСАНИЕ	8
MAIN DESCRIPTION	8
MANUFACTURER DISCRIPTION	8
Electronics	8
ELECTRICAL	9
SAILS & RIGGING	9
DECK	9
Mechanical	9
DISCLAIMER	9
Исключения	10
Отказ от ответственности	10
ФОТОГРАФИИ	11
1	11
2	11
3	11
4	11
5	11
6	12
7	12

8	12
9	12
10	12
11	12
12	13
13	13
14	13
15	13
16	13
17	13
18	14
19	14
20	14
21	14
22	14
23	14
24	15
25	15
26	15
27	15
28	15
29	15
30	16
31	16
32	16
33	16
34	16
35	16
36	17

37	17
38	17
39	17
40	17
41	17
42	18
43	18
44	18
45	18
46	18
47	18
48	19
49	19
50	19
51	19
52	19
53	19
54	20
55	20
56	20
57	20
58	20
59	20
60	21
61	21
63	21
62	21
64	21
65	21

66	22
67	22
68	22
КОНТАКТЫ	23
Контактная информация	23
Телефоны	23
Время работы	23
Адрес	23

ХАРАКТЕРИСТИКИ

Обзор

"TRUST ME" 2002 HUNTER 460 Trust Me was built in Florida by Hunter Marine (now Marlow-Hunter). For over 30 years Hunter has built quality offshore boats at a reasonable price. If you have ever seen the size of the hardware used in the chain plates alone, you know what I am saying. Trust Me made the 1200 mile voyage from Tortola to West Palm Beach in the fall of 2020. Her owner commented that she performed very well in the various conditions they encountered, and has mixed feelings about selling her, but has decided to replace her with a similar size catamaran to accommodate his family's needs. Trust Me is the shoal draft version of 5'5" and 3 cabins. Headroom is 6'6" throughout except the heads & forward cabin are 6'3"

Основная информация

Тип судна: Sloop

Модельный год: 2002

Год постройки: 2002

Страна: United States

Размеры

Длина общая: 46' 0" (14.02m)

Ширина: 14' 0" (4.27m)

Макс. осадка: 5' 6" (1.68m)

Трапы: 63' 0" (19.20m)

Скорость, вместимость и масса

Водоизмещение: 26000 Pounds

Вместимость воды: 200 Gallons

Объем топливного бака: 100 Gallons

Размещение

Всего кают: 3

Всего ком. состава: 2

Корпус и палуба

Материал корпуса: Fiberglass

Информация о двигателе

Двигатели: 1

Производитель: Yanmar

Модель: 4JH2DTE

Тип двигателя: Inboard

Тип топлива: Diesel

ПОДРОБНОЕ ОПИСАНИЕ

MAIN DESCRIPTION

"TRUST ME" 2002 HUNTER 460 Trust Me was built in Florida by Hunter Marine (now Marlow-Hunter). For over 30 years Hunter has built quality offshore boats at a reasonable price. If you have ever seen the size of the hardware used in the chain plates alone, you know what I am saying. Trust Me made the 1200 mile voyage from Tortola to West Palm Beach in the fall of 2020. Her owner commented that she performed very well in the various conditions they encountered, and has mixed feelings about selling her, but has decided to replace her with a similar size catamaran to accommodate his family's needs. Trust Me is the shoal draft version of 5'5" and 3 cabins. Headroom is 6'6" throughout except the heads & forward cabin are 6'3"

MANUFACTURER DISCRIPTION

Bringing the cockpit full beam allows the use of a custom console complete with mechanical steering, electronics space, twin fold-down tables, and even a storage bin with drink holders. The standard recessed windlass allows the capability of handling two anchors simultaneously on the dual offset anchor roller. Self-draining propane lockers on both port and starboard are convenient, safe, and practical. The Hunter trademark cockpit arch keeps the adjustable traveler up and out of the way and makes a great attachment point for the Bimini. Hand-rubbed teak and exquisite fabrics are in evidence throughout the grand interior, where storage is plentiful, as is natural light and ventilation. The dinette area is large enough to handle the crew but intimate enough for two. An enormous dual-opening refrigerator and freezer are central to the U-shaped galley. Force 10 stove and oven, plus a microwave, will make dinners a joy to prepare while the island sink will have cleanup covered. Storage for everything is at hand, including the recessed trash receptacle. Entertaining is gracious with the open salon, which incorporates a TV and CD stereo. Twin comfortable seats and a convertible cocktail table are located just forward of the extensive nav station with plenty of space for electronics and gear. The forward master stateroom rivals most yachts twice her size. Twin-hanging lockers and lots of drawers make staying aboard easy, and the inner-spring mattresses guarantee a great night's sleep. The forward master head is spacious and provides plenty of storage. The master shower is separate from the head, allowing private use at all times; a drop-down seat is even included for comfort. Aft, there is a choice of two layouts: dual staterooms or a single stateroom and an office-work area. Both are large, airy, and comfortable. In addition, an aft head with an integral shower is positioned for convenient access from the aft stateroom or the salon.

Electronics

(2) Raymarine C 90 W MFDs (helm/nav station)
(3) Raymarine i70 control heads
(autopilot/depth/wind/log)
Raymarine 24 mile radar
Raymarine WAAS GPS receiver
Icom IC-M422 VHF with DSC & AIS
Uniden summersible VHF (handheld)
ACR Global Fix 406

EPIRB Alpine tuner/DVD player with JVC power amplifier Sony 28" TV

ELECTRICAL

(2) 30 amp shorepower inlets (125 volt) Fischer Panda 4200 generator Outback Mate inverter/charger (2) 210 amp AGM house batteries (420 A/hr total) (2) rotary battery selector w/ switches Delco maintenance free starting battery Optima D 34M (bow thruster) 55 amp alternator

SAILS & RIGGING

Selden mast with in-mast furling Selden B&R masthead/ Double spreader rig Dyneema adjustable backstay Selden rigid boom vang New standing rigging including jib furler & forestay (2018) Quantum furling mainsail & Rutgerson 100mm clew block (2018) Quantum furling jib (2) Lewmar 48 ST primaries (2) Lewmar 44 ST secondaries Halyards/ Sheets/ Mainsail furling and Mainsail boom traveler lines are led to cockpit New running rigging (9) line clutches (see photos)

DECK

10' Zodiac Wave tender with 3.5 Tohatsu outboard motor Revere 8 man liferaft (current) Side Power bow thruster (12 volt) (2) Dometic A/Cs with Panda start booster Simpson Lawrence Horizon 1500 windlass (2) Plow anchors (40lb Delta with 150' chain/ 25lb Bruce with 75' chain & rode) Sea anchor (2) Adler Barbour 12/24 volt compressors (freezer/fridge) (2) Jabsco vac-u-flush heads Jabsco Par Max freshwater pump (12 volt) 11 gal water heater Rule 1500 bilge pump Manual bilge pump (2) Sump pumps (showers) Magma propane grill/ aluminum tank 12/120 volt lighting & outlets throughout Dockside water inlet Cockpit cushions & stern rail seats Transom shower Safety gear (PFDs/ MOB gear with 3 strobes/ fire exting/ flares/ harnesses/ Lifesling 2 and a drogue)

Mechanical

Yanmar 4JH2DTE 75hp 1565 hours (1.5 gph @ 2800 rpm) Racor fuel filter Kanzaki KM 4A transmission 17" bronze 3 blade propeller/ 1.25" shaft Stainless steel rudder post Fischer Panda 4200 generator (4kw) 472 hours

DISCLAIMER

The Company offers the details of this vessel in good faith but cannot guarantee or warrant the accuracy of this information nor warrant the condition of the vessel. A buyer should instruct his agents, or his surveyors, to investigate such details as the buyer desires validated. This vessel is offered subject to prior sale, price change, or withdrawal without notice.

Исключения

При продаже яхты исключаются личные вещи владельца.

Отказ от ответственности

Компания предоставляет описание судна или яхты добросовестно, но не может гарантировать точность этой информации, а также не ручается за техническое состояние. Покупатель должен проинструктировать своих агентов или оценщиков исследовать представленную информацию более подробно, по собственному желанию. Продажа судна или яхты, изменение цены или снятие с продажи будет происходить без предварительного уведомления.

ФОТОГРАФИИ

1



2



3



4



5



6



7



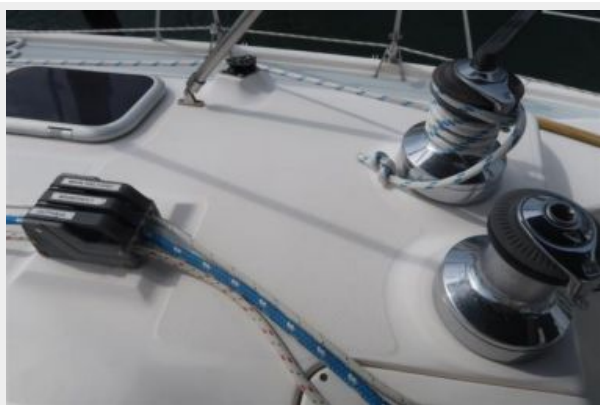
8



9



10



11



12



13



14



15



16



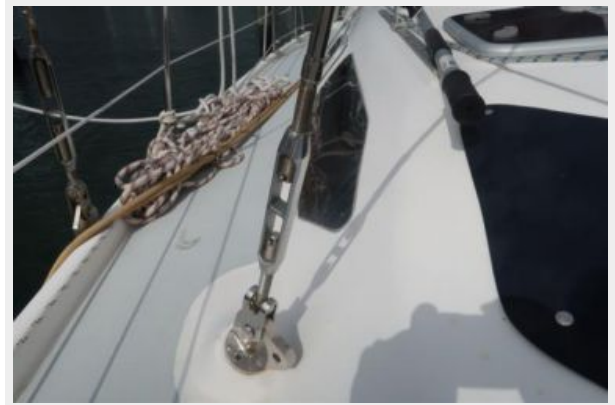
17



18



19



20



21



22



23



24



25



26



27



28



29



30



31



32



33



34



35



36



37



38



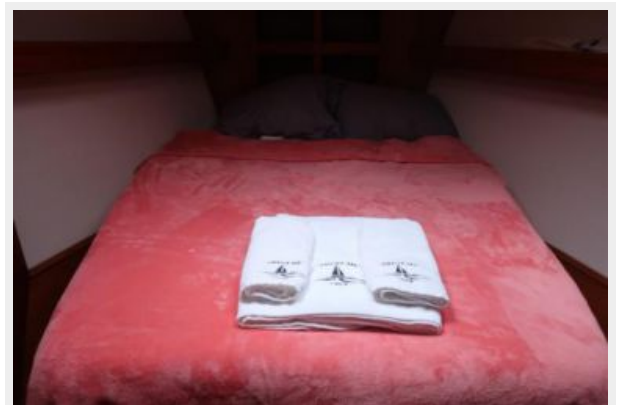
39



40



41



42



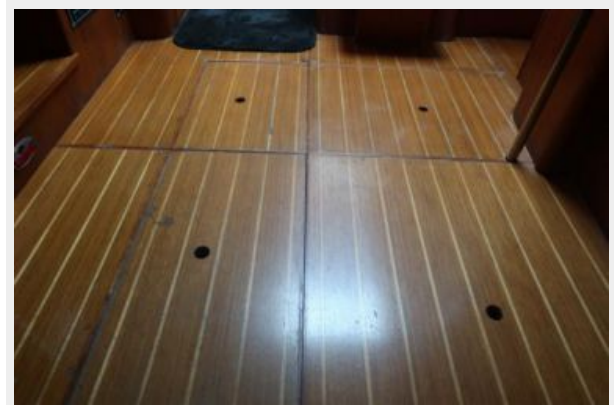
43



44



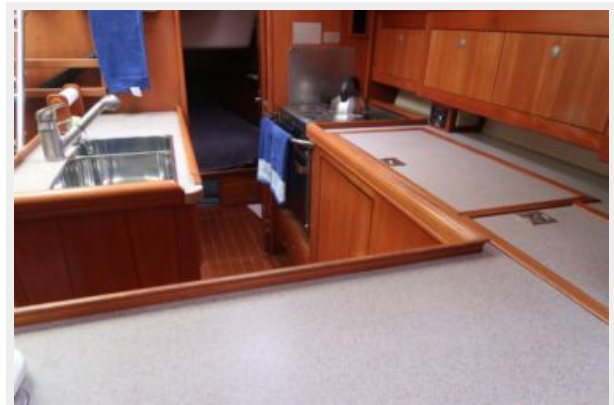
45



46



47



48



49



50



51



52



53



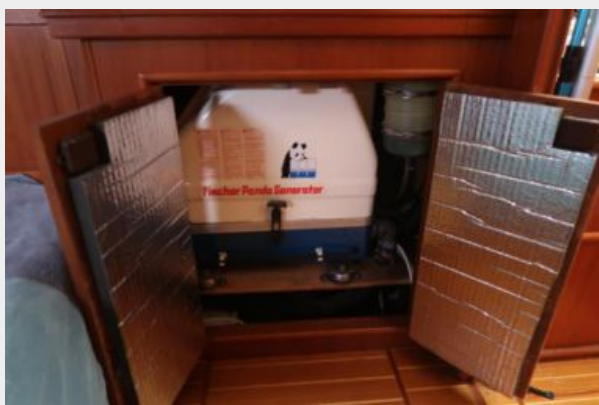
54



55



56



57



58



59



60



61



63



62



64



65



66



67



68



КОНТАКТЫ

Андрей Шестаков (Andrey Shestakov) – ведущий яхтенный брокер отдела продаж яхт и судов компании Shestakov Yacht Sales Inc. Официальный представитель Shestakov Yacht Sales Inc. для русскоговорящих клиентов в центральном офисе компании в Майами/Форт Лодердейл/Флорида/США.

Контактная информация

Email: andrey@shestakovyachtsales.com

Web: shestakovyachtsales.com

Телефоны

Краснодарский край: **+7(918)465-66-44**

США, Майами, Флорида: **+1(954)274-4435**

Время работы

Понедельник – Суббота: **9:00 - 21:00**
EDT

Воскресенье: **Закрыто**

Адрес



Harbour Towne Marina, 850 NE 3rd St,
STE 213, Dania, FL 33004