

## WILLOW — MOONEN



**Builder:** MOONEN

**Year Built:** 2006

**Model:** Motor Yacht

**Price:** PRICE ON APPLICATION

**Location:** New Zealand

**LOA:** 89' 3" (27.20m)

**Beam:** 22' 0" (6.71m)

**Min Draft:** 5' 11" (1.80m)

**Max Draft:** 5' 11" (1.80m)

**Cruise Speed:** 11 Kts. (13 MPH)

**Max Speed:** 13 Kts. (15 MPH)

Our experienced yacht broker, Andrey Shestakov, will help you choose and buy a yacht that best suits your needs **Willow — MOONEN** from our catalogue. Presently, at Shestakov Yacht Sales Inc., we have a wide variety of yachts available on our sale's list. We also work in close contact with all the big yacht manufacturers from all over the world.

If you would like to buy a yacht **Willow — MOONEN** or would like help answering any questions concerning purchasing, selling or chartering a yacht, please call **+1(954)274-4435**

# TABLE OF CONTENTS

TABLE OF CONTENTS	2
SPECIFICATIONS	4
Overview	4
Basic Information	4
Dimensions	4
Speed, Capacities and Weight	4
Accommodations	5
Hull and Deck Information	5
Engine Information	5
DETAILED INFORMATION	6
Full specification	6
Exclusions	12
Disclaimer	12
PHOTOS	13
Dining	13
Saloon	13
Saloon port side	13
Saloon	13
Master cabin	13
Master cabin	13
Master head	14
VIP cabin	14
Triple berth cabin	14
Twin & double	14
Wheelhouse	14
Galley	14
Flybridge	15
Aft deck	15

Flybridge aft	15
WILLOW GA	15
Stern extension	15
CONTACTS	16
Contact details	16
Telephones	16
Office hours	16
Address	16

# SPECIFICATIONS

---

## Overview

---

Willow comfortably sleeps up to 8/10 guests in 4 spacious en suite staterooms, including a master suite, a double VIP stateroom and a twin stateroom with an extra bunk bed to port plus a double stateroom with a bunk bed to starboard.

Large refit in 2017 followed up by superstructure paint job and minor refit in 2019 after arrival in New Zealand.

## Basic Information

---

**Category:** Motor Yacht

**Sub Category:** Displacement

**Model Year:** 2006

**Year Built:** 2006

**Country:** New Zealand

## Dimensions

---

**LOA:** 89' 3" (27.20m)

**Beam:** 22' 0" (6.71m)

**Min Draft:** 5' 11" (1.80m)

**Max Draft:** 5' 11" (1.80m)

## Speed, Capacities and Weight

---

**Cruise Speed:** 11 Kts. (13 MPH)

**Cruise Speed Range:** 2600

**Max Speed:** 13 Kts. (15 MPH)

**Displacement:** 242508.4882 Pounds

**Gross Tonnage:** 116 Pounds

**Water Capacity:** 818.9333612 Gallons

**Holding Tank:** 105.6688208 Gallons

**Fuel Capacity:** 4755.096936 Gallons

**Fuel Consumption:** 17.17118338 Gallons

## Accommodations

Total Cabins: 4	Sleeps: 10
Total Heads: 5	Crew Cabin: 2
Crew Berths: 3	Crew Sleeps: 3
Crew Heads: 1	

## Hull and Deck Information

Hull Material: Steel	Deck Material: Teak
Hull Configuration: Full Displacement	Hull Color: Majestic Blue
Hull Finish: Steel	Hull Designer: Rene van der Velden
Exterior Designer: Rene van der Velden	Interior Designer: Laura Pomponi

## Engine Information

Engines: 2	Manufacturer: Caterpillar
Model: 3406E DI-TA	Engine Type: Inboard
Fuel Type: Diesel	

---

# DETAILED INFORMATION

---

## Full specification

---

### MACHINERY

Engines: 2 x Caterpillar 3406E DI-TA

Engine hours: Port: 6278 & Stbd: 6281 (4/15/2021)

Generators: 2 x Kohler 27 kW/50 Hz, 380 V 3-phase (new 2018)

Generator hours: Port: 2310 & Stbd: 2263 (4/15/2021)

### PROPULSION & STEERING

Five blade highly skewed propellers, 965mm x 835mm.

Barkemeyer articulating rudders, blades have a small flap attached aft that angles to produce an airfoil shape. Lift and efficiency within the prop wash are higher than a straight blade's, helm is more responsive at any speed.

Reverse manoeuvring, particularly at low speed, greatly enhanced, requiring less bow thruster power & no stern thruster at all.

Autopilot wheelhouse, Simrad AP 50

Stabilisers details: Najadkoop type 2032

### MECHANICAL

2 x 475 Hp CAT 3406EDITA @ 1800rpm

Twin Disc gearboxes, type MG5114.

Mannesmann Rexroth engine control levers type Mini Marex III

Bow thruster

Watermaker HEM, new membranes 2017

Ultraviolet water Steriliser, new 2017

Air compressor Durr station WD-O40 AK - 24 Volts, new 2017

Techma toilets

### ELECTRICAL

Tijssen PLC in engine room (called M.P.A.) to monitoring through touch screens located in the wheelhouse high voltage system, battery system, generators, navigation lights, tank sounding system, pumps, bilge alarms, fire alarms and deck lights.

Shore power cable

Shore power isolation transformer

2 x Kohler generators 27 kW/50 Hz, 380 V 3-phase, New 2018

24 Volt service batteries, New 2017

24 Volt starting batteries, New 2017

Service battery charger Mastervolt Mass 24/100

Main engine/generator battery charger Mastervolt Mass 24/20

Inverter Mastervolt 24/2500

Under floor heating in guest & Owner's bathrooms and dayhead

Heated towel rails in guest and Owner's bathrooms

AC Climma, 3 new chiller units and 4 new air handlers 2017

## COMMUNICATION & NAVIGATION EQUIPMENT

2 x VHF DSC radios wheelhouse, Simrad RS87

VHF DSC radio flybridge, Simrad RS87

Hand-held VHF sets

2 x GPS wheelhouse, Simrad GN33

ARPA radar wheelhouse, Simrad

Chart plotter wheelhouse, Simrad

ARPA radar flybridge

Chart plotter flybridge

Nav Instrument wheelhouse, B&G Triton, New 2017

Log/depth sounder flybridge, Simrad IS 20

Wind data flybridge, Simrad IS15.

Multi function displays, Simrad IS 15

Navtex Good, Furuno NX-700

PABX system interfaced with mobile phone network 32

Compass wheelhouse

Ship's clock/Barometer/Hygrometer weather station

Searchlight, Sanchin HR 1012

Inmarsat - C, Thrane & Thrane Capsat TT- 3022D.

Fleet 55 Satellite phone, KVH Tracphone.

Internet 4G antennae, router and wifi connection

AIS, Furuno FA-170, New 2017

Fishfinder, WASSP, New 2017

Satellite Compass Furuno SC-50, New 2017

VSAT Sailor 800 antenna and controller, New 2017

4G-Router Cradlepoint AER3100, New 2017

Cradlepoint Modem MC400LP5 for New Zealand/Australia, New 2017

Communication PC Nuvo-3120, Intel i5/2500MHz, 8GB, New 2017

Moxa Device server NPORT-5650-8-DT, New 2017

Navigation PC Nuvo-3120, Intel i5/2500MHz, 8GB, New 2017

Maxsea TimeZero Professional 3.1, New 2017

Below deck unit comprising satellite modem, tel. modem and router, New 2017

## ENTERTAINMENT

All New 2017:

YAMAHA RX A 2060 av receiver Saloon, Stern Deck, Flybridge

7 x YAMAHA RX S 601 av receiver Owner, 3 Guest, 3 Crew cabins

8 x YAMAHA BD S 477 Blu-ray player each location 8

4 x TELEFUNKEN L22F275M4 22" TV port/stbd Guest, Capt., Crew cabins



2 x TELEFUNKEN L28H275R4 28" TV Owner & Fwd Guest cabin

ARTCOUSTIC C1 centerspeaker Owner

4 x SONANCE VP 65R XT in-ceiling speaker Stern Deck, Flybridge

2 x Apple TV Owner, Saloon

NAS Server with 8TB usable datavolume Bridge

APPLE MacMini 2,6GHz Bridge

#### DOMESTIC APPLIANCES, EQUIPMENT & LAUNDRY

Galley refrigerator/freezer Bloomberg, New 2017

Galley extractor fan, ELICA Leaf, New 2017

Galley hob, Miele, New 2017

Galley oven, Miele, New 2017

Galley dishwasher, Miele, New 2017

Aft deck ice maker, Hoshizaki IM-30CNE, New 2017

Flybridge refrigerator, Isotherm, New 2017

Flybridge icemaker, U Line

Flybridge BBQ

Crew laundry Miele PW 6065 washing machine, New 2017

Crew laundry Miele PT7135C Tumble dryer, New 2017

Crew refrigerator

Crew freezer

#### INTERIOR DESCRIPTION SUMMARY

There is full beam master stateroom and three guest staterooms. Main deck is one level with pilot house, galley, dining and salon all on the same level. The galley can be closed off from the main salon and dining area. The pilot house can also be closed off from the main salon and dining area for guest privacy. The aft deck offers wonderful alfresco dining. A very spacious sundeck offers nearly three quarters length of the vessel.

#### ACCOMMODATION

## LOWER DECK:

**Master Cabin:** Master cabin is full beam and located aft on the lower deck with king size berth on center.

Port side aft of the cabin is the master is the head with shower, on the starboard side aft is a walk in closet with built in shelving. Port side in the cabin is a comfortable two-seater couch starboard side is fitted with a desk and bookshelves.

**Guest Cabins:** Moving forward are the port and starboard guest cabins. Port cabin has a double bed with a single bunk bed on aft bulkhead, and starboard has twin beds with a bunk bed on forward bulkhead – both with ensuite head and shower.

Forward in the bow is the VIP guest cabin, fitted with a queen size bed, personal safe and vast storage under the floor. On both port and starboard aft are hanging lockers. Port side aft is the head with shower and starboard side has a vanity/desk.

## MAIN DECK:

Entering from the aft deck you go through a glass sliding door, with has a large glass panel on the opposite side. Upon entering on port side is a large U-shaped settee, to starboard is a storage cabinet with drop down TV from the ceiling. Further forward to starboard is the dining area with table seating for eight, built in seating outboard with four chairs inboard. On the port side is a bar with three stools, which also works very well for breakfast service. Forward of the bar is the galley. The galley can be closed off via a pocket door. Moving forward from the dining area are the stairs to the lower guest cabins

and to port is a dayhead. Moving further forward is the pilot house. The pilot house can be closed off from the guest area with two large pocket doors.

The main deck area of ETOILE is fitted with very large windows, bringing in an abundance of natural light and offering amazing views.

**Pilot House:** Excellent visibility is possible through a five panel windshield. There are doors on both port and starboard side leading to the main deck. On center and to starboard are two Recaro chairs. The floors are finished with teak and holly. The galley can also be entered via the pilot house.

Galley is located on the port side, between the pilot house and saloon bar. The floor is finished in teak and holly. This is a full service galley, easily used by a professional chef or guests; it's thoroughly equipped to for formally or informally dining. There are pocket doors on the forward and far end of the galley allowing the area to be closed of from both the pilot house and main saloon.

Crew quarters are entered either via the swim platform or on starboard side of aft main deck. To starboard is the Captain's cabin with a single berth and to port is an upper and lower crew cabin for two. There is a head with shower forward of the starboard crew cabin.

## DECK

Swim platform extended 1m with inbuilt lockers and bait tanks.

2 x Muir Anchor windlasses, serviced 2017

2 x 125 Kg Pool Anchor

2 x 100 m Kettenfabrik Anchor Chain 13 mm, new 2017

Besenzoni retractable passarelle 3.50m in transom

Besenzoni deck crane reaching the length of 3.50m - lifting capacity of 600 kg

2 x Cramm aft mooring winches

Side boarding ladder - removable

Deck wash

Deck shower at stern platform

Exit Carbon Swim ladder, new 2017

2 x Calorifers 115 litres

## PAINT JOB

Majestic Blue Awlgrip on hull

Hull painted 2017

Superstructure painted 2019

## TENDER & TOYS

Zodiac 4.2m tender, 60 hp outboard

Note: Subject to change and/or negotiation during the buying process.

## DIVING

Bauer Dive compressor JHE

## SAFETY & SECURITY

Engine room fixed fire fighting system, Novec 1230 with remote pulls

Fire dampers and remote pulls

? x Hand-held fire extinguishers

Fire blanket in galley

Fire Detection/alarm system (integrated with MPA system)

Smoke/heat detectors

2 x Liferafts, SOLAS 16 persons

2 x Lifebuoys with line

? x Lifejackets adult

? x Lifejackets child

12 x TPA's

Flares (also in grab bag)

Inflatable radar reflector (grab bag)

Daylight signal mirror (grab bag)

SOLAS lifesaving card (grab bag)

Flare gun (grab bag)

EPIRB

SART

Hand-held GMDSS VHF radio

First aid kit

## Exclusions

---

Owner's personal belongings.

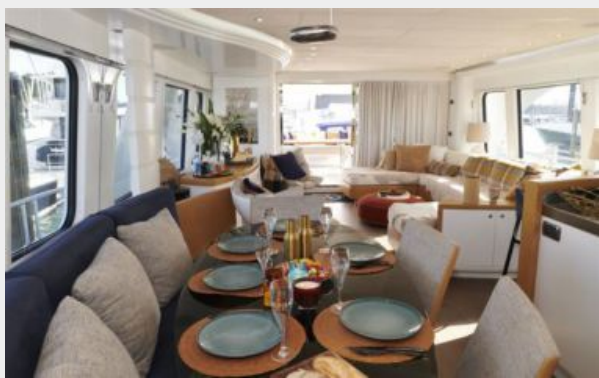
## Disclaimer

---

The Company offers the details of this vessel or yacht in good faith but cannot guarantee or warrant the accuracy of this information nor warrant the condition of the vessel. A buyer should instruct his representatives, agents, or his surveyors, to investigate such details as the buyer desires validated. This vessel or yacht is offered subject to prior sale, price change, or withdrawal without notice.

# PHOTOS

## Dining



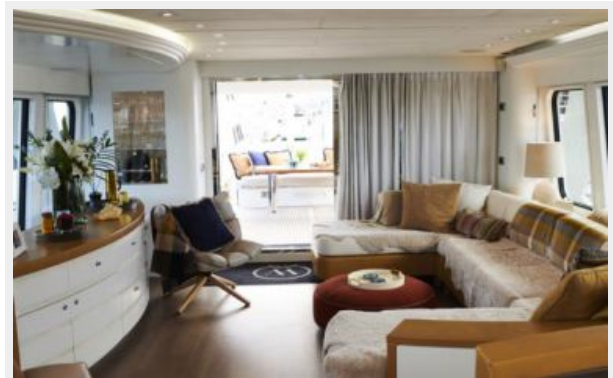
## Saloon



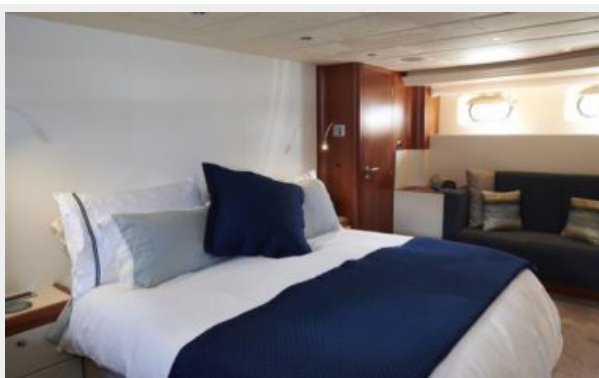
## Saloon port side



## Saloon



## Master cabin



## Master cabin



**Master head**



**VIP cabin**



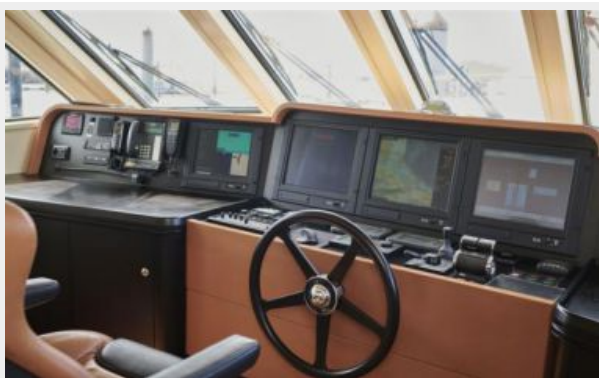
**Triple berth cabin**



**Twin & double**



**Wheelhouse**



**Galley**





**Flybridge**



**Aft deck**



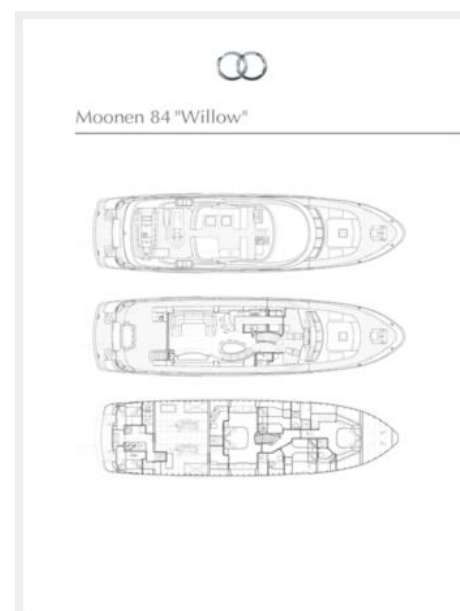
**Flybridge aft**



**Stern extension**



**WILLOW GA**



# CONTACTS

---

Andrey Shestakov, leading yacht broker of the sales department of Shestakov Yacht Sales Inc. Shestakov Yacht Sales Inc., the official representative of the Miami/Fort Lauderdale FL headquarters.

## Contact details

---

Email:  
**andrey@shestakovyachtsales.com**

Web: [shestakovyachtsales.com/en/](http://shestakovyachtsales.com/en/)

## Telephones

---

USA: **+1(954)274-4435**

## Office hours

---

Monday – Saturday: **9:00 - 21:00 EDT**

Sunday: **closed**

## Address

---



Harbour Towne Marina, 850 NE 3rd St,  
STE 213, Dania, FL 33004