

TIGER LILLI (NAME RESERVED) — PACIFIC MARINER



Судостроитель: PACIFIC MARINER

Год постройки: 2004

Модель: Моторная яхта

Цена: ЦЕНА ЯХТЫ ПО ЗАПРОСУ

Местонахождение: Canada

Длина общая: 70' 0" (21.34m)

Ширина: 17' 3" (5.26m)

Макс. осадка: 5' 0" (1.52m)

Крейс. скорость: 17 Kts. (20 MPH)

Макс. скорость: 25 Kts. (29 MPH)

Купить **TIGER LILLI (NAME RESERVED) — PACIFIC MARINER** а также выбрать подходящую вам яхту из нашего каталога яхт вам поможет опытный яхтенный брокер Андрей Шестаков. На сегодняшний день компания **Shestakov Yacht Sales Inc.** имеет большое количество яхт в собственном списке продаж, а также тесно сотрудничает со всеми крупными яхтенными производителями по всему миру.

Для того чтобы купить яхту **TIGER LILLI (NAME RESERVED) — PACIFIC MARINER** а также проконсультироваться по любому вопросу связанному с покупкой, продажей, чартером яхт позвоните по телефону **+7(918)465-66-44**.

ОГЛАВЛЕНИЕ

ОГЛАВЛЕНИЕ	2
ХАРАКТЕРИСТИКИ	5
Обзор	5
Основная информация	5
Размеры	5
Скорость, вместимость и масса	5
Размещение	6
Корпус и палуба	6
Информация о двигателе	6
ПОДРОБНОЕ ОПИСАНИЕ	7
Walkthrough	7
Salon	7
Galley	8
Master Stateroom	8
Master Stateroom Head	9
VIP Stateroom	9
VIP Stateroom Head	9
Guest Stateroom	10
Guest Head	10
Crew Quarter's	10
Pilothouse and Helm	11
Flybridge	11
Deck Equipment	12
Tender	12
Electrical Equipment	12
Mechanical Equipment	13
Maintenance	14
Exclusions	14

Исключения	14
Отказ от ответственности	14
ФОТОГРАФИИ	16
Salon	16
Salon	16
Salon	16
Salon Entertainment Center	16
Galley	16
Galley	16
Settee	17
Settee	17
Helm	17
Helm	17
Helm	17
Master Stateroom	17
Master Stateroom	18
Master Stateroom	18
Master Stateroom	18
Master Stateroom Head	18
Master Stateroom Head	18
VIP Stateroom	18
VIP Stateroom	19
VIP Stateroom	19
VIP Stateroom Head	19
Guest Stateroom	19
Guest Stateroom	20
Guest Stateroom	20
Guest Head	20
Flybridge	20

Flybridge Helm	21
Flybridge Helm	21
Flybridge Grill and Refrigeration	21
Flybridge Seating	21
Tender	21
Tender	21
Tender	22
Foredeck	22
Foredeck	22
Starboard Wing Station	22
Cockpit	22
Cockpit	22
Cockpit Wing Station	23
Cockpit	23
Engine Room	23
Engine Room	23
Engine Room	23
Engine Room	23
Crew Quarters and Lazarette	24
Crew Quarters and Lazarette	24
Swim Platform	24
Starboard Profile	24
Starboard Stern	24
Starboard Bow	24
КОНТАКТЫ	25
Контактная информация	25
Телефоны	25
Время работы	25
Адрес	25

ХАРАКТЕРИСТИКИ

Обзор

The Pacific Mariner 65 Diamond hull, the creation of renowned naval architect William Garden, delivers unparalleled performance, responsive handling and a smooth ride. Exterior design and interior arrangement by Gregory Marshall offer the timeless appeal of traditional styling with a crisp, contemporary flair, and a functional layout that utilizes every square inch of space. Warm and inviting. Your style of cruising, of course, is entirely up to you. But whichever you prefer, Tiger Lilli makes it all possible.

Основная информация

Тип судна: Моторная яхта

Модельный год: 2004

Год постройки: 2004

Страна: Canada

Размеры

Длина общая: 70' 0" (21.34m)

Ширина: 17' 3" (5.26m)

Макс. осадка: 5' 0" (1.52m)

Длина привального бруса: 65' 0"
(19.81m)

Скорость, вместимость и масса

Крейс. скорость: 17 Kts. (20 MPH)

Макс. скорость: 25 Kts. (29 MPH)

Водоизмещение: 69000 Pounds

Вместимость воды: 285 Gallons

Вместимость сточного бака: 125 Gallons Объем топливного бака: 1100 Gallons

Размещение

Всего кают: 3

Всего коек: 4

Спальные места: 6

Всего ком. состава: 3

Каюты экипажа: 1

Койки экипажа: 2

Спальных мест экипажа: 2

Комм. состав экипажа: 1

Корпус и палуба

Материал корпуса: Fiberglass

Комплектация корпуса: Modified V-Hull

Информация о двигателе

Двигатели: 2

Производитель: Detroit Diesel

Модель: Series 60

Тип двигателя: Inboard

Тип топлива: Diesel

ПОДРОБНОЕ ОПИСАНИЕ

Walkthrough

As you step inside the salon, you're surrounded by a warmth of cherry cabinetry and woodwork. A sweep of windows frames a panoramic view. Lounge seating and an adjacent table allow socializing and relaxed conversation; the richly-finished camphor table adjusts both vertically and horizontally for dining and onboard entertaining. A 42" plasma TV anchors a premium home theater system with surround sound, and a fully equipped wet bar completes an elegant seagoing environment. The pilothouse deck arrangement enables the entire family to enjoy the cruise together. A fully equipped galley allows efficient food preparation, and at the adjacent informal dinette, the table converts to accommodate family meals or casual refreshments. Passengers and captain alike view the passing scenery through an uninterrupted sweep of windows, and the helm station features a full complement of electronics for precise, effortless navigation. Port and starboard doors allow quick access to the foredeck sunpad. Accommodations onboard Tiger Lilli provide exceptional privacy and comfort for owner, family, and guests. Three staterooms each include flat screen TV, stereo, hanging locker, drawer storage, and an ensuite head. The owner's stateroom adds a desk, built-in dresser, and dual walk-in wardrobes. Tiger Lilli's quiet operation assures everyone a good night's sleep. Tiger Lilli's aft deck is equally inviting and versatile. An upholstered lounge offers stretch-out comfort and rises to allow convenient access to mechanical spaces and crew quarters aft. Molded-in steps lead to a broad swim platform that is complete with storage compartments, boarding ladder, and a hot/cold fresh water shower for swimmers and divers. Topside the convenience of an enclosed helm, lounge with table, barbeque, and refrigerator all adds up to unsurpassed comfort, convenience, and enjoyment. Tiger Lilli's tender is cradled just aft of the enclosed flybridge on the boat deck.

Salon

- 42" LED TV w/ home theater surround sound speaker system w/sub woofer
- Satellite TV
- Audio/video control receiver w/120 watts per channel
- DVD player
- Multi-Disc CD changer
- Custom Camphorwood power lift hi-lo table w/slide
- Custom furniture quality sofa w/designer coverings and storage drawers
- Two custom upholstered chairs with side table & lamp
- Wet bar wine refrigerator w/icemaker, stainless steel sink & custom crystal stemware
- Digital room temperature control panel
- Satin finish teak cabinetry
- Custom Hunter-Douglas shades
- 110V outlets

- 12V lighting
- Carpeted flooring
- Central vacuum system
- Stainless steel framed sliding glass door to cockpit

Galley

- Stainless steel full size range w/convection oven
- 22 cu. ft. side-by-side G.E. stainless steel refrigerator w/ice & water dispenser
- Dishwasher
- G.E. stainless steel microwave oven
- Kitchenaid stainless steel trash compactor
- Stainless steel double sink w/insinkerator disposal
- Grohe single lever faucet w/pull-out sprayer
- Corian countertop
- Lazy Susan w/pull-out shelves
- Opening ventilation hatch w/screen
- Dishes & flatware
- Set of stainless-steel pots & pans
- Hunter Douglas custom window blinds
- Digital room temperature control panel
- Satin finish teak cabinetry & storage drawers
- Teak & holly flooring
- 110V outlets
- 12V lighting

Master Stateroom

- Full beam mid-ship master stateroom
- King size walk around bed w/ storage drawers beneath
- Side tables and numerous storage drawers
- Custom desk w/ drawer storage and chair
- Bookshelf
- Sony flatscreen TV
- Sony Blu-ray and DVD player
- JVC DVD player with home theater surround sound audio
- Directv satellite receiver
- 12 Disc CD changer stereo
- Intercom
- Digital room temperature control panel
- Satin finish teak cabinetry, storage drawers, and privacy doors
- Two cedar lined, lighted hanging lockers

- Four opening port lights with screens
- Hunter-Douglas shades
- Two reading lights
- 110V outlets
- 12V lighting
- Carpeted flooring

Master Stateroom Head

- Fiberglass tub w/ shower
- Corian countertop w/sink and designer faucet
- Storage under vanity
- Mirrored vanity w/ storage
- Linen cabinet w/ shelves and matching corian countertop
- Tecma quiet flush vacuuflush marine head
- Opening portlight w/ screen
- Privacy curtain
- Exhaust vent
- 110V outlets
- 12V lighting

VIP Stateroom

- Queen size walk-around bed w/storage drawers beneath
- Private access to ensuite head
- Digital room temperature control panel with separate reverse cycle heat and air conditioning zone
- 20" Sharp TV w/ DID and VCR
- Intercom
- JVC stereo system w/remote control
- Satin finish teak cabinetry, storage drawers, and privacy doors
- Cedar lined, lighted hanging locker
- Ventilation hatch above berth w/ cover & screen
- Two opening portlights w/ screens
- Hunter-Douglas shades
- Two reading lights, courtesy lights, and overhead lights
- 110V outlets
- 12V lighting
- Carpeted flooring

VIP Stateroom Head

- Fiberglass shower w/ safety glass door
- Corian countertop w/sink
- Marine vacuflush head
- Mirrored vanity / storage
- Opening portlight w/ screen
- Privacy curtain
- Exhaust vent
- 110V outlets
- 12V lighting

Guest Stateroom

- Twin size berths w/storage drawers beneath
- Desk & chair with storage area
- 13" Sharp TV w/ JVC VHS and DVD player
- JVC CD stereo w/remote control
- Digital room temperature control panel with heat and air conditioning controls
- Satin finish teak cabinetry, storage drawers, and privacy doors
- Cedar lined, lighted hanging locker
- Opening portlight w/ screen
- Hunter-Douglas shades
- Two reading lights
- 110V outlets
- 12V lighting
- Carpeted flooring

Guest Head

- Access through two doors including guest cabin and foyer
- Fiberglass shower w/ safety glass door
- Corian countertop w/sink
- Marine vacuflush head
- Mirrored vanity / storage
- Opening portlight w/ screen
- Privacy curtain
- Exhaust vent
- 110V outlets
- 12V lighting

Crew Quarter's

- Two berths w/ storage under
- Stacked washer and dryer
- Reading lights
- Digital temperature control with heat and air conditioning
- Sink w/ storage area
- Marine vacuflush head
- Deep freezer
- Storage lockers
- Spare parts storage
- Access to engine room through watertight door
- Opening portlight w/ screen

Pilothouse and Helm

- Teak clad cockpit and cockpit steps
- Swim step boarding ladder
- Stainless steel gate to swim step
- Pop up cleats on swim platform
- Port and Starboard Lewmar warping winches
- Fold-out gear throttle and thruster controls on starboard side deck
- Lewmar windlass w/ vertical capstan, deck controls, and upper and lower helm controls
- 400' High test chain
- CQR 75 lb. anchor
- 5' Boarding platform w/large storage locker & two access hatches
- Hot & cold water cockpit shower
- Fresh water washdown on foredeck & aft deck
- Courtesy lights
- Barrett premium enclosure panels at cockpit and flybridge
- Textaline window converts to pilothouse front windows
- Nautical Structures EZ 15003 1,500 lb. tender crane with power boom luff, winch and power rotation

Flybridge

- Two Stidd Captain Chairs
- MTU electronic gear and throttle controls with synchronizer, low idle mode, and trolling valve Detroit Diesel electronic engine data
- Naiad Marine Multisea II roll stabilizer control
- Naiad Marine bow thruster control
- Argonaut Tflex screen displaying Furuno Time Zero plotter and data
- Garmin 7608 plotter and sounder with forward looking sonar
- Simrad Mega IS12 multiview repeater

- Simrad AP22 autopilot control head
- Icom M402 VHF marine radio
- Simrad RI35 rudder angle control
- Ritchie compass
- Fireboy emergency shutdown system
- ACR spotlight control
- Variable speed wiper and washer in center window
- L-shaped settee to starboard w/ storage
- Built-in electric BBQ grill
- Beverage refrigeration
- Courtesy lighting
- Baseboard electric heat
- Overhead fishing rod holders
- Barrett premium enclosure panels

Deck Equipment

- Teak Aft Deck
- 3000 lb Windlass w/warping capstan
- 400' High test chain
- CQR 75 lb anchor
- Docking windlasses port & stbd w/foot switches
- 5' Boarding platform w/large storage locker & two access hatches
- Hot & cold water cockpit shower
- Fresh water washdown on foredeck & aft deck
- Electric BBQ grill
- Barrett premium enclosure panels at cockpit and flybridge

Tender

- 12' 6" Rendova RIB 2004 tender w/ steering console, bench seat, and storage lockers
- 2004 40HP Yamaha 4-stroke outboard engine w/ electric start and electric tilt
- Stainless steel arch w/ flood lights, antenna, and rod holders
- Furuno plotter and sounder
- Icom VHF radio
- New tender cover

Electrical Equipment

- Northern Lights 20 KW generator w /PTO for thruster (4,180 hours)
- Northern Lights 16 KW generator (2,272 hours)

- House battery bank with eight 390 Amp/hour AGM batteries
- Separate banks for cranking batteries
- Two Charles Marine 12KVA isolation transformers; one port, one starboard
- One Charles Marine 3.6 KVA isolation transformer
- Charles Marine 40 Amp battery charger for the engine batteries
- Charles Marine 20 Amp battery charger for genset start batteries
- Two 50 Amp shore power cables, each on electric Glendinning retrieval systems; one port, one starboard
- AC and DC power services the vessel through circuit breaker panels w/ appropriate voltage and ampere gauges
- AC power is provided by 240/120V 50Amp shore connection, by two generator sets, and, for lighter 120VAC loads, by a 4000 Watt inverter, powered by the house bank of batteries
- 240/120VAC power is distributed through a circuit breaker protected panel w/ appropriate volt and Amp gauges, and switches for fore and aft shore selection and shore and ship power
- 24/12VDC power is distributed through circuit breaker protected panels, one for 24VDC and the second for 12VDC, both with volt and Amp gauges
- Two banks of batteries; the house bank for onboard systems, and a dedicated start bank for engine and genset starting; both with dedicated charging systems

Mechanical Equipment

- Twin Detroit Diesel Series 60 Diesel Engines 825 bhp w/ electronic controls (2,900 hours).
- Four control stations for MTU gear and throttle controls, engine start/stop, and thruster control; pilothouse helm, flybridge helm, cockpit station, and starboard side deck station
- Naiad Marine Multisea II stabilizers - 4.5 sq. ft. fins
- Naiad Marine 25 hp hydraulic bow thruster
- Sea Star hydraulic steering
- Main engine block heaters
- Reverso oil change system for both mains and both gensets
- Sea Recovery 800 GPD Aqua Whisper water maker
- Triple filtered fresh water system
- Groco heavy duty domestic water supply pump and accumulator tank
- 60,000 BTU Aqua Air air conditioning and reverse cycle heat
- Tankwatch 4 holding tank monitor
- Delta T demisting engine room blowers
- PSS driplless shaft seals
- Shaft brushes
- Dual racor fuel filters for main engines, plumbed to the center of the forward bulkhead for easy access
- Sight gauges to fuel tanks
- 30 gallon hot water tank heated by AC supply, or by engine
- Two Lewmar cockpit warping winches; one port, one starboard

- Kahlenburg horn
- Propellers - 5 blade Nibral
- Propeller shafts 2.5" 22HS
- Automatic fire extinguisher system in engine room
- Full set of tools, spare parts, filters, fuses, lights, etc.
- Winslow life raft
- American flag and staff
- Fire extinguishers
- Fenders
- Flare kit
- Life jackets
- Life ring
- Mooring lines
- Boat hook
- Ship's bell

Maintenance

- Engine oil & filter change (Feb. 2021)
- Coolant system flushed (Feb. 2021)
- Underwater zincs replaced (Feb. 2021)
- Bottom paint (2018)
- Replaced fresh water pump & pressure tank (2018)

Exclusions

All personal property is excluded unless specifically identified and included in the sale agreement and listing specifications. Personal property refers to all items not permanently attached to the vessel including but not limited to artwork, furnishings, and recreational or entertainment items. Advertisements, marketing materials, and/or other photography may depict the vessel with personal property, however, such personal property is excluded unless otherwise specifically included as provided herein.

Исключения

При продаже яхты исключаются личные вещи владельца.

Отказ от ответственности

Компания предоставляет описание судна или яхты добросовестно, но не может гарантировать точность этой информации, а также не ручается за техническое

состояние. Покупатель должен проинструктировать своих агентов или оценщиков исследовать представленную информацию более подробно, по собственному желанию. Продажа судна или яхты, изменение цены или снятие с продажи будет происходить без предварительного уведомления.

ФОТОГРАФИИ

Salon



Salon



Salon



Salon Entertainment Center



Galley



Galley



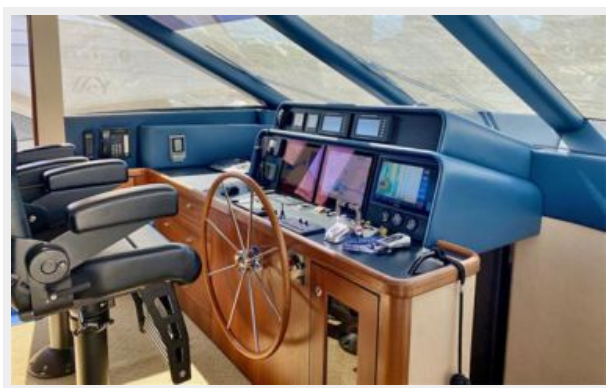
Settee



Settee



Helm



Helm



Helm



Master Stateroom



Master Stateroom



Master Stateroom



Master Stateroom



Master Stateroom Head



Master Stateroom Head



VIP Stateroom



VIP Stateroom



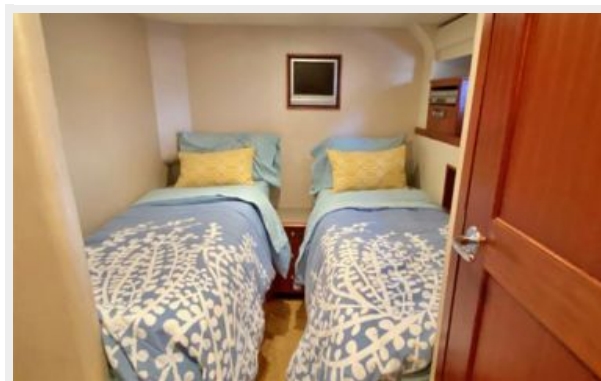
VIP Stateroom



VIP Stateroom Head



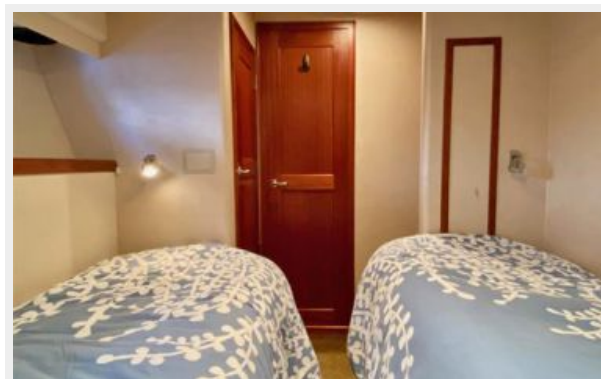
Guest Stateroom



Guest Stateroom



Guest Stateroom



Guest Head



Flybridge



Flybridge Helm



Flybridge Helm



Flybridge Grill and Refrigeration



Flybridge Seating



Tender



Tender



Tender



Foredeck



Foredeck



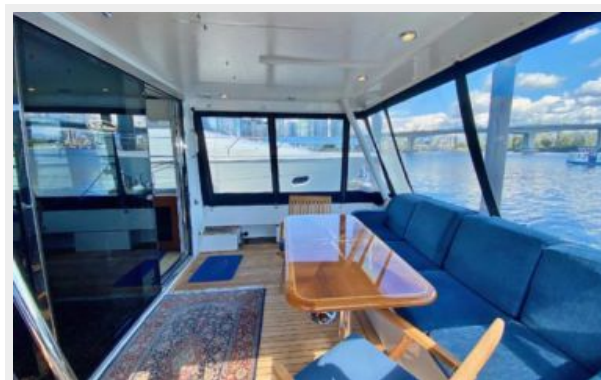
Starboard Wing Station



Cockpit



Cockpit



Cockpit



Cockpit Wing Station



Engine Room



Engine Room



Engine Room



Engine Room



Crew Quarters and Lazarette



Crew Quarters and Lazarette



Swim Platform



Starboard Profile



Starboard Stern



Starboard Bow



КОНТАКТЫ

Андрей Шестаков (Andrey Shestakov) – ведущий яхтенный брокер отдела продаж яхт и судов компании Shestakov Yacht Sales Inc. Официальный представитель Shestakov Yacht Sales Inc. для русскоговорящих клиентов в центральном офисе компании в Майами/Форт Лодердейл/Флорида/США.

Контактная информация

Email: andrey@shestakovyachtsales.com

Web: shestakovyachtsales.com

Телефоны

Краснодарский край: **+7(918)465-66-44**

США, Майами, Флорида: **+1(954)274-4435**

Время работы

Понедельник – Суббота: **9:00 - 21:00**
EDT

Воскресенье: **Закрито**

Адрес



Harbour Towne Marina, 850 NE 3rd St,
STE 213, Dania, FL 33004